

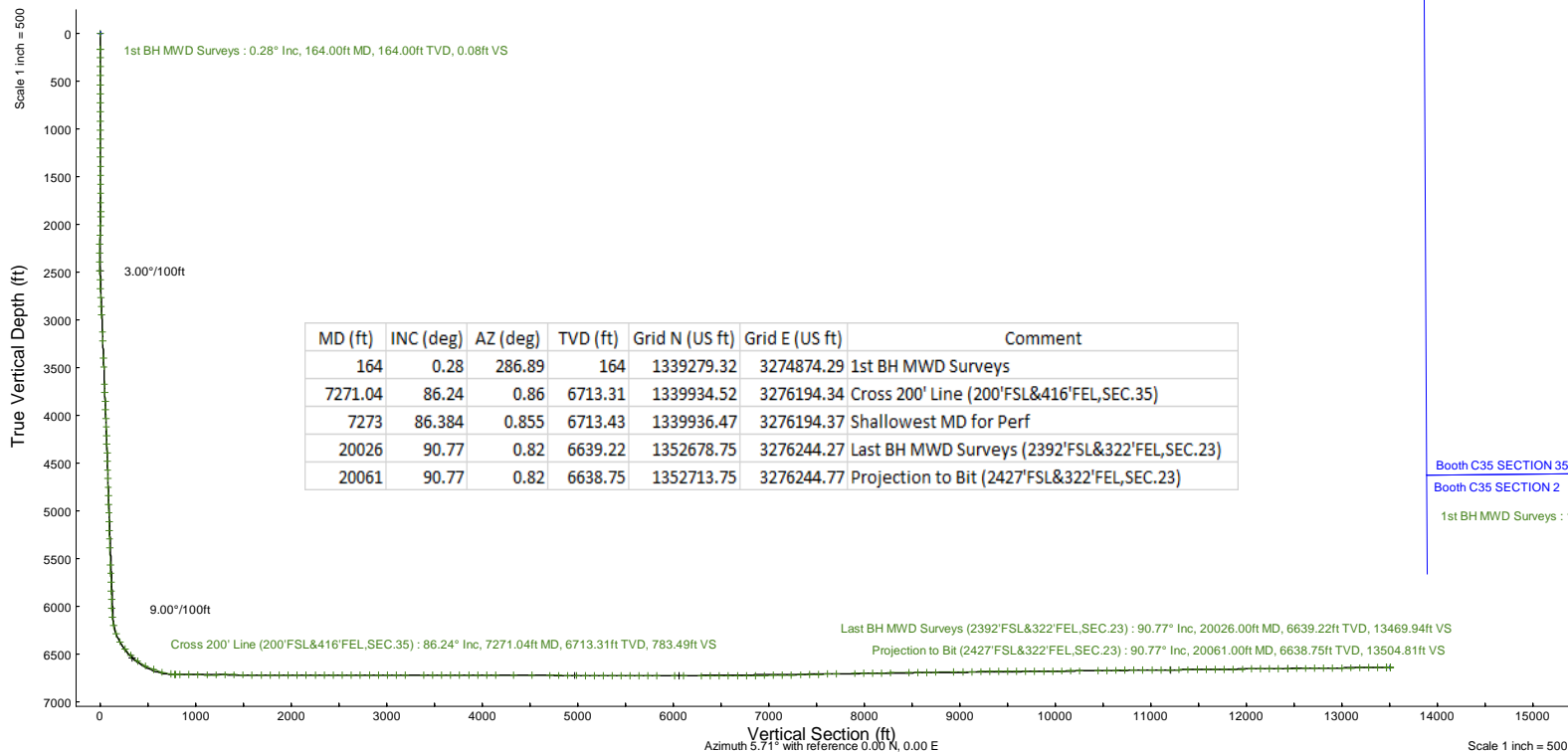
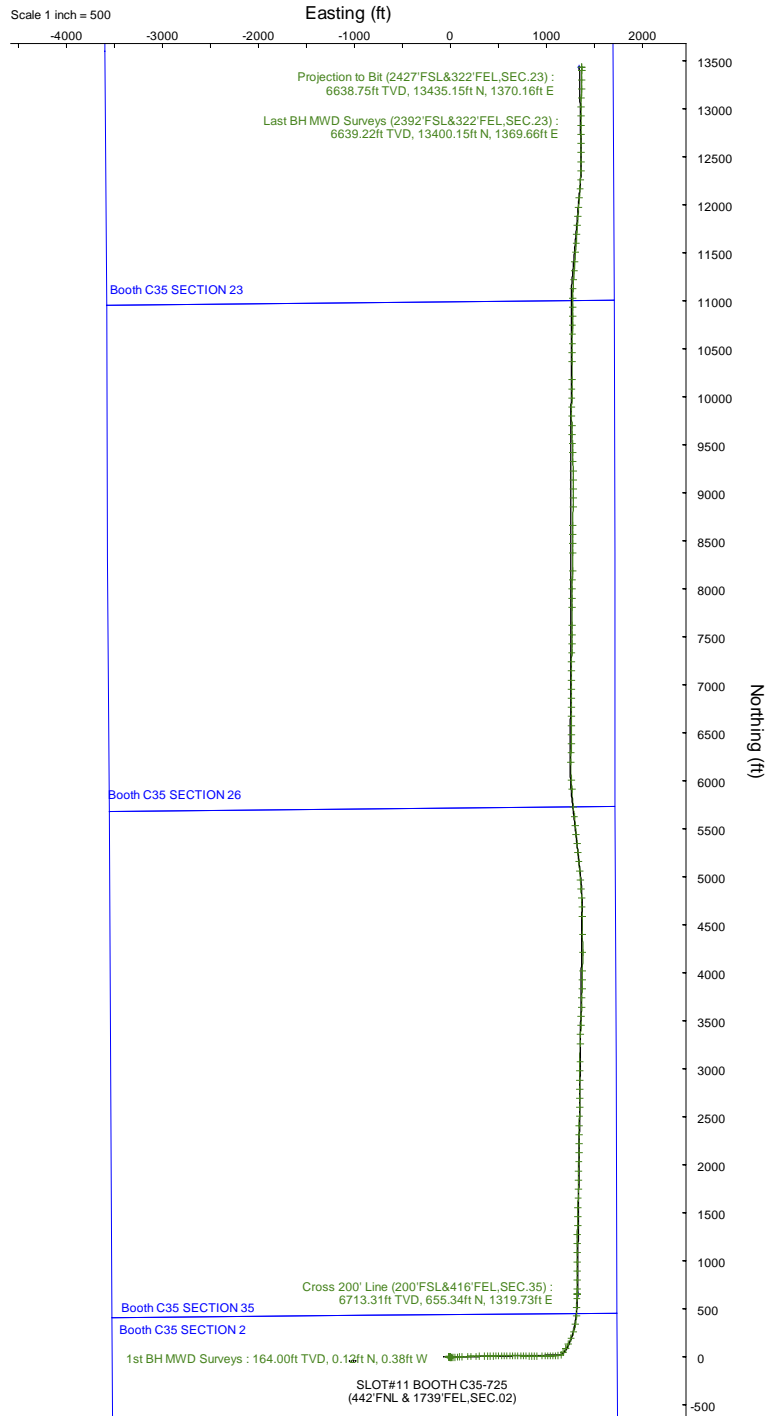
# NOBLE ENERGY, INC

Location: COLORADO Slot: SLOT#11 BOOTH C35-725 (442'FNL & 1739'FEL,SEC.02)  
 Field: WELD COUNTY (NOBLE NAD 83 GRID) Well: Booth C35-725  
 Facility: SEC.02-T03N-R64W Wellbore: Booth C35-725 PWB

Plot reference wellpath is Booth C35-725 (REV-B.0) PWP  
 Grid System: NAD83 / Lambert Colorado SP, Northern Zone (501), US feet  
 True vertical depths are referenced to Patterson 268 (4722'GL+29'KB@4751'RKB) (RKB) North Reference: Grid north  
 Reference wellpath measured depths are referenced to Patterson 268 (4722'GL+29'KB@4751'RKB) (RKB) Scale: True distance  
 Patterson 268 (4722'GL+29'KB@4751'RKB) (RKB) to Mean Sea Level: 4751 feet Coordinates are in feet referenced to Slot  
 Mean Sea Level to Mud line (At Slot: SLOT#11 BOOTH C35-725 (442'FNL & 1739'FEL,SEC.02)): 0 feet Depths are in feet  
 Offset wellpath MDs are referenced to each path's default MD datum Created by: guenaler on 2023-02-06; Database: WA\_Demver

### Location Information

Facility Name		Grid East (US ft)	Grid North (US ft)	Latitude	Longitude	
SEC.02-T03N-R64W		3273800.050	1339388.610	40°15'39.1068"N	104°31'8.0615"W	
Slot	Local N (ft)	Local E (ft)	Grid East (US ft)	Grid North (US ft)	Latitude	Longitude
SLOT#11 BOOTH C35-725 (442'FNL & 1739'FEL,SEC.02)	-109.41	1074.67	3274874.676	1339279.205	40°15'37.9080"N	104°30'54.2160"W
Patterson 268 (4722'GL+29'KB@4751'RKB) (RKB) to Mud line (At Slot: SLOT#11 BOOTH C35-725 (442'FNL & 1739'FEL,SEC.02))					4751ft	
Mean Sea Level to Mud line (At Slot: SLOT#11 BOOTH C35-725 (442'FNL & 1739'FEL,SEC.02))					0ft	
Patterson 268 (4722'GL+29'KB@4751'RKB) (RKB) to Mean Sea Level					4751ft	



MD (ft)	INC (deg)	AZ (deg)	TVD (ft)	Grid N (US ft)	Grid E (US ft)	Comment
164	0.28	286.89	164	1339279.32	3274874.29	1st BH MWD Surveys
7271.04	86.24	0.86	6713.31	1339934.52	3276194.34	Cross 200' Line (200'FSL&416'FEL,SEC.35)
7273	86.384	0.855	6713.43	1339936.47	3276194.37	Shallowest MD for Perf
20026	90.77	0.82	6639.22	1352678.75	3276244.27	Last BH MWD Surveys (2392'FSL&322'FEL,SEC.23)
20061	90.77	0.82	6638.75	1352713.75	3276244.77	Projection to Bit (2427'FSL&322'FEL,SEC.23)



# Actual Wellpath Report

Booth C35-725 AWP

Page 1 of 8



REFERENCE WELLPATH IDENTIFICATION			
Operator	NOBLE ENERGY, INC	Well	Booth C35-725
Field	WELD COUNTY (NOBLE NAD 83 GRID)	API	05-123-48922
Facility	SEC.02-T03N-R64W	Wellbore	Booth C35-725 AWB
Slot	SLOT#11 BOOTH C35-725 (442'FNL & 1739'FEL,SEC.02)		

REPORT SETUP INFORMATION			
Projection System	NAD83 / Lambert Colorado SP, Northern Zone (501), US feet	Software System	WellArchitect® 6.0
North Reference	Grid	User	Guenaler
Scale	0.999957	Report Generated	2/6/2023 at 10:20:17 AM
Convergence at slot	0.64° East	Database	WA_Denver

WELLPATH LOCATION						
	Local coordinates		Grid coordinates		Geographic coordinates	
	North[ft]	East[ft]	Easting[US ft]	Northing[US ft]	Latitude	Longitude
Slot Location	-109.41	1074.67	3274874.68	1339279.21	40.2605300°	-104.5150600°
Facility Reference Pt			3273800.05	1339388.61	40.2608630°	-104.5189060°
Field Reference Pt			3000000.00	4454105.15	48.7761986°	-105.5000000°

WELLPATH DATUM			
Calculation method	Minimum curvature	Patterson 268 (4722'GL+29'KB@4751'RKB) (RKB) to Facility Vertical Datum	4751.00ft
Horizontal Reference Pt	Slot	Patterson 268 (4722'GL+29'KB@4751'RKB) (RKB) to Mean Sea Level	4751.00ft
Vertical Reference Pt	Patterson 268 (4722'GL+29'KB@4751'RKB) (RKB)	Patterson 268 (4722'GL+29'KB@4751'RKB) (RKB) to Mud Line at Slot (SLOT#11 BOOTH C35-725 (442'FNL & 1739'FEL,SEC.02))	4751.00ft
MD Reference Pt	Patterson 268 (4722'GL+29'KB@4751'RKB) (RKB)	Section Origin	N 0.00, E 0.00 ft
Field Vertical Reference	Mean Sea Level	Section Azimuth	5.71°



# Actual Wellpath Report

Booth C35-725 AWP

Page 2 of 8



## REFERENCE WELLPATH IDENTIFICATION

Operator	NOBLE ENERGY, INC	Well	Booth C35-725
Field	WELD COUNTY (NOBLE NAD 83 GRID)	API	05-123-48922
Facility	SEC.02-T03N-R64W	Wellbore	Booth C35-725 AWB
Slot	SLOT#11 BOOTH C35-725 (442'FNL & 1739'FEL,SEC.02)		

## WELLPATH DATA (201 stations)

MD [ft]	Inclination [°]	Azimuth [°]	TVD [ft]	Vert Sect [ft]	North [ft]	East [ft]	Latitude	Longitude	DLS [°/100ft]	Comments
0.00	0.000	286.890	0.00	0.00	0.00	0.00	40.2605300	-104.5150600	0.00	
164.00	0.280	286.890	164.00	0.08	0.12	-0.38	40.2605303	-104.5150614	0.17	1st BH MWD Surveys
251.00	0.440	288.150	251.00	0.19	0.28	-0.90	40.2605308	-104.5150632	0.18	
348.00	0.670	310.490	347.99	0.59	0.77	-1.69	40.2605322	-104.5150660	0.32	
443.00	0.530	287.780	442.99	1.00	1.26	-2.53	40.2605335	-104.5150690	0.29	
538.00	0.280	300.750	537.99	1.19	1.51	-3.15	40.2605343	-104.5150712	0.28	
633.00	0.200	308.480	632.98	1.38	1.74	-3.48	40.2605349	-104.5150724	0.09	
728.00	0.240	322.170	727.98	1.62	2.00	-3.73	40.2605356	-104.5150733	0.07	
823.00	0.320	268.170	822.98	1.72	2.15	-4.12	40.2605360	-104.5150747	0.28	
918.00	0.490	319.570	917.98	1.97	2.45	-4.65	40.2605369	-104.5150765	0.40	
1012.00	0.280	272.160	1011.98	2.24	2.76	-5.14	40.2605377	-104.5150783	0.39	
1107.00	0.670	268.790	1106.98	2.15	2.76	-5.92	40.2605377	-104.5150811	0.41	
1202.00	0.530	301.880	1201.97	2.28	2.98	-6.85	40.2605384	-104.5150844	0.39	
1297.00	0.640	285.490	1296.97	2.56	3.35	-7.74	40.2605394	-104.5150876	0.21	
1392.00	0.680	284.460	1391.96	2.74	3.63	-8.79	40.2605402	-104.5150914	0.04	
1486.00	0.460	292.400	1485.95	2.93	3.92	-9.68	40.2605410	-104.5150945	0.25	
1581.00	0.570	277.450	1580.95	3.06	4.12	-10.50	40.2605416	-104.5150975	0.18	
1676.00	0.650	324.340	1675.95	3.48	4.62	-11.29	40.2605430	-104.5151002	0.52	
1771.00	0.500	335.080	1770.94	4.24	5.44	-11.77	40.2605453	-104.5151020	0.19	
1866.00	0.670	284.140	1865.94	4.68	5.95	-12.49	40.2605467	-104.5151045	0.55	
1921.00	0.610	296.220	1920.93	4.82	6.16	-13.06	40.2605473	-104.5151066	0.27	
2016.00	2.740	195.060	2015.90	2.76	4.19	-14.11	40.2605419	-104.5151104	3.07	
2112.00	4.620	138.790	2111.72	-2.15	-0.94	-12.15	40.2605278	-104.5151036	4.00	
2206.00	3.780	124.150	2205.47	-6.21	-5.53	-7.10	40.2605150	-104.5150856	1.44	
2301.00	4.140	92.150	2300.26	-7.48	-7.41	-1.08	40.2605097	-104.5150642	2.32	
2396.00	5.630	84.450	2394.91	-6.36	-7.09	6.99	40.2605103	-104.5150352	1.71	
2491.00	7.250	82.920	2489.31	-4.12	-5.90	17.58	40.2605133	-104.5149973	1.71	
2586.00	9.500	84.300	2583.29	-1.24	-4.38	31.33	40.2605170	-104.5149479	2.38	
2680.00	12.420	85.070	2675.56	2.16	-2.75	49.12	40.2605210	-104.5148841	3.11	
2775.00	15.380	86.750	2767.77	6.01	-1.15	71.88	40.2605246	-104.5148025	3.14	
2870.00	15.850	86.540	2859.26	10.04	0.34	97.41	40.2605280	-104.5147110	0.50	
2965.00	17.800	84.480	2950.19	14.94	2.52	124.82	40.2605331	-104.5146127	2.15	
3154.00	18.040	88.830	3130.03	24.08	5.90	182.83	40.2605406	-104.5144047	0.72	
3249.00	17.980	89.420	3220.38	27.45	6.35	212.20	40.2605410	-104.5142995	0.20	

**WELLPATH DATA (201 stations)**

MD [ft]	Inclination [°]	Azimuth [°]	TVD [ft]	Vert Sect [ft]	North [ft]	East [ft]	Latitude	Longitude	DLS [°/100ft]	Comments
3438.00	17.870	89.370	3400.21	33.85	6.96	270.37	40.2605409	-104.5140911	0.06	
3533.00	17.670	89.570	3490.67	37.00	7.23	299.36	40.2605407	-104.5139872	0.22	
3723.00	18.340	88.380	3671.37	43.91	8.29	358.07	40.2605418	-104.5137768	0.40	
3817.00	18.210	88.000	3760.63	47.77	9.22	387.54	40.2605435	-104.5136712	0.19	
3912.00	18.170	88.080	3850.88	51.73	10.24	417.17	40.2605454	-104.5135649	0.05	
4007.00	17.920	88.160	3941.21	55.62	11.20	446.59	40.2605471	-104.5134595	0.26	
4101.00	18.110	88.510	4030.60	59.35	12.05	475.64	40.2605486	-104.5133554	0.23	
4196.00	17.860	88.110	4120.96	63.13	12.91	504.96	40.2605500	-104.5132503	0.29	
4290.00	17.460	90.290	4210.53	66.37	13.32	533.47	40.2605503	-104.5131482	0.82	
4385.00	17.830	89.400	4301.06	69.32	13.40	562.27	40.2605496	-104.5130450	0.48	
4480.00	17.740	89.950	4391.52	72.37	13.56	591.29	40.2605492	-104.5129410	0.20	



# Actual Wellpath Report

Booth C35-725 AWP  
Page 3 of 8



## REFERENCE WELLPATH IDENTIFICATION

Operator	NOBLE ENERGY, INC	Well	Booth C35-725
Field	WELD COUNTY (NOBLE NAD 83 GRID)	API	05-123-48922
Facility	SEC.02-T03N-R64W	Wellbore	Booth C35-725 AWB
Slot	SLOT#11 BOOTH C35-725 (442'FNL & 1739'FEL,SEC.02)		

## WELLPATH DATA (201 stations) † = interpolated, ‡ = extrapolated station

MD [ft]	Inclination [°]	Azimuth [°]	TVD [ft]	Vert Sect [ft]	North [ft]	East [ft]	Latitude	Longitude	DLS [°/100ft]	Comments
4574.00	17.360	90.310	4481.14	75.13	13.50	619.63	40.2605481	-104.5128395	0.42	
4669.00	17.500	90.300	4571.78	77.81	13.35	648.09	40.2605469	-104.5127375	0.15	
4764.00	17.560	90.660	4662.37	80.42	13.11	676.70	40.2605453	-104.5126350	0.13	
4858.00	17.350	90.240	4752.04	83.01	12.89	704.89	40.2605438	-104.5125340	0.26	
4953.00	17.710	90.190	4842.63	85.75	12.78	733.51	40.2605427	-104.5124315	0.38	
5048.00	17.710	90.980	4933.13	88.33	12.48	762.41	40.2605410	-104.5123280	0.25	
5142.00	17.260	91.060	5022.78	90.65	11.98	790.64	40.2605387	-104.5122268	0.48	
5237.00	16.970	91.680	5113.58	92.77	11.31	818.59	40.2605361	-104.5121267	0.36	
5332.00	17.090	91.210	5204.41	94.84	10.61	846.41	40.2605333	-104.5120271	0.19	
5426.00	17.080	88.400	5294.26	97.68	10.71	874.01	40.2605327	-104.5119282	0.88	
5521.00	17.290	89.380	5385.02	101.01	11.25	902.08	40.2605333	-104.5118276	0.38	
5711.00	17.150	89.450	5566.51	107.19	11.82	958.32	40.2605332	-104.5116261	0.07	
5805.00	16.910	89.410	5656.38	110.20	12.10	985.85	40.2605331	-104.5115274	0.26	
5900.00	16.740	91.390	5747.32	112.75	11.91	1013.34	40.2605317	-104.5114289	0.63	
5995.00	16.770	88.570	5838.29	115.48	11.92	1040.72	40.2605309	-104.5113308	0.86	
6090.00	17.270	88.440	5929.12	118.97	12.64	1068.52	40.2605321	-104.5112312	0.53	
6185.00	17.180	88.120	6019.86	122.61	13.49	1096.64	40.2605335	-104.5111305	0.14	
6280.00	17.620	84.530	6110.52	127.26	15.32	1124.98	40.2605377	-104.5110289	1.22	
6374.00	18.930	60.760	6199.90	138.77	24.13	1152.48	40.2605610	-104.5109300	8.00	
6469.00	25.020	36.670	6288.13	164.90	47.84	1178.00	40.2606253	-104.5108376	11.33	
6564.00	33.160	27.930	6371.12	206.27	87.00	1202.22	40.2607321	-104.5107492	9.65	
6659.00	40.110	28.960	6447.30	258.51	136.79	1229.24	40.2608679	-104.5106504	7.34	
6753.00	47.680	24.070	6515.01	319.42	195.11	1258.13	40.2610271	-104.5105446	8.82	
6848.00	54.420	17.930	6574.73	390.63	264.06	1284.39	40.2612155	-104.5104478	8.69	
6943.00	62.540	9.820	6624.42	470.66	342.57	1303.52	40.2614304	-104.5103761	11.22	
7038.00	70.080	3.710	6662.59	557.53	428.86	1313.63	40.2616670	-104.5103364	9.88	
7133.00	74.890	1.070	6691.18	647.93	519.34	1317.37	40.2619152	-104.5103194	5.71	
7228.00	83.090	0.980	6709.31	740.79	612.50	1319.04	40.2621709	-104.5103097	8.63	
7271.04†	86.240	0.860	6713.31	783.49	655.34	1319.73	40.2622884	-104.5103055	7.32	Cross 200' Line (200'FSL&416'FEL,SEC.35)
7273.00†	86.384	0.855	6713.43	785.44	657.30	1319.76	40.2622938	-104.5103053	7.32	Shallowest MD for Perf
7322.00	89.970	0.720	6714.99	834.23	706.26	1320.43	40.2624282	-104.5103010	7.32	
7417.00	89.050	0.710	6715.80	928.86	801.25	1321.62	40.2626889	-104.5102929	0.97	
7512.00	89.850	358.740	6716.72	1023.33	896.24	1321.16	40.2629496	-104.5102907	2.24	
7607.00	89.260	359.840	6717.45	1117.73	991.22	1319.98	40.2632104	-104.5102912	1.31	

<b>WELLPATH DATA (201 stations) † = interpolated, ‡ = extrapolated station</b>										
MD [ft]	Inclination [°]	Azimuth [°]	TVD [ft]	Vert Sect [ft]	North [ft]	East [ft]	Latitude	Longitude	DLS [°/100ft]	Comments
7702.00	90.860	359.840	6717.35	1212.23	1086.22	1319.72	40.2634711	-104.5102883	1.68	
7796.00	90.490	2.040	6716.25	1305.89	1180.19	1321.26	40.2637290	-104.5102790	2.37	
7891.00	88.950	0.890	6716.71	1400.62	1275.16	1323.69	40.2639896	-104.5102665	2.02	
7986.00	90.460	2.280	6717.20	1495.37	1370.12	1326.32	40.2642501	-104.5102533	2.16	
8081.00	87.470	0.470	6718.92	1590.07	1465.06	1328.60	40.2645107	-104.5102414	3.68	
8175.00	90.430	1.220	6720.64	1683.70	1559.02	1329.98	40.2647685	-104.5102326	3.25	
8270.00	90.400	1.330	6719.95	1778.41	1653.99	1332.10	40.2650292	-104.5102213	0.12	
8365.00	90.400	0.660	6719.29	1873.09	1748.98	1333.74	40.2652898	-104.5102115	0.71	
8460.00	89.480	0.920	6719.39	1967.74	1843.97	1335.05	40.2655505	-104.5102031	1.01	
8554.00	89.480	1.160	6720.24	2061.42	1937.95	1336.76	40.2658084	-104.5101932	0.26	
8649.00	90.580	1.040	6720.19	2156.11	2032.93	1338.58	40.2660691	-104.5101828	1.16	



# Actual Wellpath Report

Booth C35-725 AWP

Page 4 of 8



## REFERENCE WELLPATH IDENTIFICATION

Operator	NOBLE ENERGY, INC	Well	Booth C35-725
Field	WELD COUNTY (NOBLE NAD 83 GRID)	API	05-123-48922
Facility	SEC.02-T03N-R64W	Wellbore	Booth C35-725 AWB
Slot	SLOT#11 BOOTH C35-725 (442'FNL & 1739'FEL,SEC.02)		

## WELLPATH DATA (201 stations)

MD [ft]	Inclination [°]	Azimuth [°]	TVD [ft]	Vert Sect [ft]	North [ft]	East [ft]	Latitude	Longitude	DLS [°/100ft]	Comments
8744.00	89.660	0.800	6719.99	2250.78	2127.92	1340.11	40.2663297	-104.5101736	1.00	
8839.00	89.850	1.060	6720.40	2345.45	2222.90	1341.65	40.2665904	-104.5101643	0.34	
8933.00	89.600	0.450	6720.85	2439.09	2316.89	1342.89	40.2668483	-104.5101561	0.70	
9028.00	89.910	0.840	6721.25	2533.72	2411.89	1343.96	40.2671090	-104.5101484	0.52	
9123.00	89.910	1.130	6721.40	2628.40	2506.87	1345.59	40.2673697	-104.5101388	0.31	
9218.00	90.150	0.850	6721.35	2723.07	2601.86	1347.23	40.2676304	-104.5101291	0.39	
9313.00	90.060	0.850	6721.18	2817.73	2696.85	1348.64	40.2678911	-104.5101203	0.09	
9407.00	90.060	0.080	6721.08	2911.34	2790.84	1349.41	40.2681490	-104.5101138	0.82	
9502.00	90.090	0.150	6720.96	3005.88	2885.84	1349.60	40.2684098	-104.5101093	0.08	
9597.00	89.720	0.900	6721.11	3100.49	2980.84	1350.47	40.2686705	-104.5101024	0.88	
9692.00	90.340	359.880	6721.06	3195.08	3075.83	1351.11	40.2689312	-104.5100962	1.26	
9882.00	90.090	2.090	6720.35	3384.42	3265.79	1354.38	40.2694525	-104.5100769	1.17	
9976.00	90.580	1.520	6719.80	3478.20	3359.74	1357.34	40.2697103	-104.5100626	0.80	
10071.00	90.150	2.050	6719.20	3572.97	3454.69	1360.30	40.2699708	-104.5100482	0.72	
10166.00	89.910	1.890	6719.15	3667.77	3549.64	1363.57	40.2702313	-104.5100327	0.30	
10261.00	89.690	1.790	6719.48	3762.55	3644.59	1366.62	40.2704919	-104.5100179	0.25	
10356.00	89.970	2.080	6719.76	3857.34	3739.53	1369.82	40.2707524	-104.5100026	0.42	
10450.00	89.660	2.210	6720.06	3951.16	3833.47	1373.34	40.2710101	-104.5099863	0.36	
10545.00	89.940	1.270	6720.40	4045.93	3928.42	1376.23	40.2712706	-104.5099721	1.03	
10640.00	89.820	0.630	6720.59	4140.60	4023.41	1377.80	40.2715313	-104.5099627	0.69	
10830.00	89.600	0.000	6721.56	4329.76	4213.40	1378.85	40.2720528	-104.5099514	0.35	
11019.00	89.750	359.420	6722.63	4517.72	4402.39	1377.89	40.2725715	-104.5099472	0.32	
11209.00	89.910	358.630	6723.19	4706.42	4592.36	1374.66	40.2730931	-104.5099512	0.42	
11304.00	89.630	357.670	6723.57	4800.59	4687.31	1371.59	40.2733538	-104.5099584	1.05	
11399.00	90.030	357.880	6723.86	4894.68	4782.24	1367.90	40.2736144	-104.5099678	0.48	
11493.00	89.660	356.390	6724.11	4987.62	4876.12	1363.20	40.2738723	-104.5099809	1.63	
11588.00	89.630	355.580	6724.70	5081.26	4970.88	1356.55	40.2741326	-104.5100009	0.85	
11683.00	89.820	354.490	6725.15	5174.61	5065.53	1348.33	40.2743926	-104.5100266	1.16	
11778.00	89.660	354.510	6725.59	5267.79	5160.09	1339.22	40.2746524	-104.5100555	0.17	
11873.00	89.970	353.890	6725.89	5360.88	5254.60	1329.62	40.2749121	-104.5100861	0.73	
11968.00	90.090	354.120	6725.84	5453.90	5349.08	1319.70	40.2751718	-104.5101179	0.27	
12062.00	89.600	354.800	6726.10	5546.09	5442.64	1310.63	40.2754289	-104.5101466	0.89	
12157.00	89.850	354.330	6726.55	5639.30	5537.21	1301.63	40.2756887	-104.5101751	0.56	
12252.00	89.940	354.030	6726.73	5732.38	5631.72	1292.00	40.2759484	-104.5102058	0.33	

**WELLPATH DATA (201 stations)**

MD [ft]	Inclination [°]	Azimuth [°]	TVD [ft]	Vert Sect [ft]	North [ft]	East [ft]	Latitude	Longitude	DLS [°/100ft]	Comments
12347.00	89.380	353.940	6727.29	5825.39	5726.20	1282.04	40.2762080	-104.5102377	0.60	
12536.00	89.780	356.610	6728.68	6011.24	5914.53	1266.48	40.2767254	-104.5102860	1.43	
12631.00	89.720	357.090	6729.09	6105.11	6009.39	1261.26	40.2769860	-104.5103009	0.51	
12821.00	89.970	0.420	6729.60	6293.68	6199.31	1257.13	40.2775074	-104.5103081	1.76	
12915.00	91.230	1.160	6728.62	6387.33	6293.30	1258.42	40.2777653	-104.5102997	1.55	
13010.00	89.780	0.460	6727.78	6481.97	6388.28	1259.77	40.2780260	-104.5102911	1.69	
13105.00	90.710	0.670	6727.38	6576.59	6483.27	1260.70	40.2782867	-104.5102839	1.00	
13200.00	90.400	0.790	6726.46	6671.22	6578.26	1261.91	40.2785474	-104.5102758	0.35	
13295.00	89.050	0.230	6726.91	6765.83	6673.26	1262.76	40.2788081	-104.5102690	1.54	
13389.00	91.260	359.270	6726.66	6859.31	6767.25	1262.35	40.2790661	-104.5102667	2.56	
13484.00	91.260	359.570	6724.57	6953.71	6862.22	1261.39	40.2793268	-104.5102663	0.32	



# Actual Wellpath Report

Booth C35-725 AWP  
Page 5 of 8



REFERENCE WELLPATH IDENTIFICATION			
Operator	NOBLE ENERGY, INC	Well	Booth C35-725
Field	WELD COUNTY (NOBLE NAD 83 GRID)	API	05-123-48922
Facility	SEC.02-T03N-R64W	Wellbore	Booth C35-725 AWB
Slot	SLOT#11 BOOTH C35-725 (442'FNL & 1739'FEL,SEC.02)		

WELLPATH DATA (201 stations)										
MD [ft]	Inclination [°]	Azimuth [°]	TVD [ft]	Vert Sect [ft]	North [ft]	East [ft]	Latitude	Longitude	DLS ["/100ft]	Comments
13579.00	91.230	359.770	6722.51	7048.16	6957.19	1260.84	40.2795875	-104.5102645	0.21	
13674.00	91.080	359.860	6720.59	7142.64	7052.18	1260.53	40.2798482	-104.5102618	0.18	
13768.00	91.420	1.650	6718.54	7236.26	7146.14	1261.77	40.2801061	-104.5102536	1.94	
13863.00	91.380	1.030	6716.22	7330.96	7241.09	1263.99	40.2803666	-104.5102418	0.65	
13958.00	91.320	1.140	6713.98	7425.62	7336.04	1265.79	40.2806272	-104.5102316	0.13	
14053.00	91.570	0.890	6711.58	7520.27	7431.00	1267.47	40.2808878	-104.5102217	0.37	
14148.00	91.020	359.620	6709.44	7614.82	7525.97	1267.90	40.2811485	-104.5102164	1.46	
14243.00	91.230	0.100	6707.57	7709.30	7620.95	1267.66	40.2814092	-104.5102135	0.55	
14432.00	91.110	0.700	6703.71	7897.45	7809.91	1268.98	40.2819278	-104.5102012	0.32	
14527.00	91.200	0.270	6701.80	7992.03	7904.88	1269.79	40.2821884	-104.5101945	0.46	
14622.00	91.050	0.620	6699.93	8086.61	7999.86	1270.52	40.2824491	-104.5101881	0.40	
14716.00	90.860	0.740	6698.37	8180.24	8093.84	1271.64	40.2827070	-104.5101803	0.24	
14811.00	90.770	0.670	6697.02	8274.87	8188.83	1272.81	40.2829677	-104.5101723	0.12	
15001.00	90.770	0.800	6694.46	8464.13	8378.79	1275.25	40.2834890	-104.5101560	0.07	
15096.00	90.710	1.040	6693.23	8558.79	8473.77	1276.77	40.2837497	-104.5101467	0.26	
15191.00	90.620	359.670	6692.13	8653.37	8568.76	1277.36	40.2840104	-104.5101408	1.45	
15285.00	90.890	359.960	6690.89	8746.86	8662.75	1277.06	40.2842684	-104.5101381	0.42	
15475.00	90.920	1.720	6687.89	8936.14	8852.70	1279.84	40.2847897	-104.5101205	0.93	
15570.00	90.800	359.040	6686.47	9030.71	8947.68	1280.47	40.2850504	-104.5101145	2.82	
15665.00	90.710	0.400	6685.21	9125.18	9042.67	1280.01	40.2853111	-104.5101123	1.43	
15759.00	91.110	0.220	6683.72	9218.75	9136.65	1280.52	40.2855691	-104.5101068	0.47	
15854.00	90.590	358.930	6682.31	9313.19	9231.64	1279.81	40.2858298	-104.5101055	1.46	
15949.00	90.550	358.650	6681.37	9407.50	9326.61	1277.81	40.2860905	-104.5101089	0.30	
16044.00	90.400	358.170	6680.58	9501.72	9421.57	1275.17	40.2863513	-104.5101145	0.53	
16139.00	90.340	358.010	6679.97	9595.88	9516.52	1272.00	40.2866120	-104.5101221	0.18	
16234.00	90.650	359.020	6679.15	9690.13	9611.48	1269.54	40.2868727	-104.5101271	1.11	
16328.00	89.380	357.550	6679.12	9783.33	9705.43	1266.73	40.2871307	-104.5101334	2.07	
16423.00	90.740	359.940	6679.02	9877.62	9800.40	1264.65	40.2873914	-104.5101371	2.89	
16518.00	90.460	0.440	6678.03	9972.17	9895.40	1264.96	40.2876521	-104.5101322	0.60	
16613.00	90.430	0.140	6677.29	10066.75	9990.39	1265.44	40.2879128	-104.5101266	0.32	
16708.00	90.430	0.580	6676.58	10161.33	10085.39	1266.04	40.2881736	-104.5101207	0.46	
16802.00	90.060	0.810	6676.17	10254.97	10179.38	1267.18	40.2884315	-104.5101128	0.46	
16992.00	90.990	0.460	6674.43	10444.21	10369.36	1269.29	40.2889529	-104.5100977	0.52	
17087.00	91.320	0.460	6672.52	10538.79	10464.34	1270.05	40.2892136	-104.5100912	0.35	

**WELLPATH DATA (201 stations)**

MD [ft]	Inclination [°]	Azimuth [°]	TVD [ft]	Vert Sect [ft]	North [ft]	East [ft]	Latitude	Longitude	DLS [°/100ft]	Comments
17182.00	91.080	0.580	6670.53	10633.38	10559.31	1270.91	40.2894742	-104.5100843	0.28	
17276.00	90.770	0.460	6669.01	10726.98	10653.29	1271.76	40.2897322	-104.5100774	0.35	
17371.00	90.340	0.640	6668.09	10821.59	10748.28	1272.68	40.2899929	-104.5100704	0.49	
17466.00	90.280	0.410	6667.58	10916.20	10843.28	1273.55	40.2902536	-104.5100635	0.25	
17561.00	90.520	0.440	6666.91	11010.79	10938.27	1274.25	40.2905143	-104.5100571	0.25	
17655.00	90.740	0.960	6665.88	11104.43	11032.26	1275.40	40.2907722	-104.5100493	0.60	
17750.00	90.740	2.980	6664.65	11199.21	11127.19	1278.66	40.2910327	-104.5100338	2.13	
17845.00	90.340	4.090	6663.76	11294.14	11222.01	1284.52	40.2912928	-104.5100090	1.24	
17940.00	90.620	3.790	6662.96	11389.09	11316.78	1291.05	40.2915527	-104.5099818	0.43	
18035.00	90.340	3.800	6662.17	11484.03	11411.57	1297.34	40.2918127	-104.5099554	0.29	
18130.00	90.740	4.530	6661.27	11578.99	11506.31	1304.24	40.2920725	-104.5099269	0.88	



# Actual Wellpath Report

Booth C35-725 AWP  
Page 6 of 8



REFERENCE WELLPATH IDENTIFICATION			
Operator	NOBLE ENERGY, INC	Well	Booth C35-725
Field	WELD COUNTY (NOBLE NAD 83 GRID)	API	05-123-48922
Facility	SEC.02-T03N-R64W	Wellbore	Booth C35-725 AWB
Slot	SLOT#11 BOOTH C35-725 (442'FNL & 1739'FEL,SEC.02)		

WELLPATH DATA (201 stations) † = interpolated, ‡ = extrapolated station										
MD [ft]	Inclination [°]	Azimuth [°]	TVD [ft]	Vert Sect [ft]	North [ft]	East [ft]	Latitude	Longitude	DLS [°/100ft]	Comments
18224.00	90.430	3.650	6660.31	11672.95	11600.06	1310.94	40.2923296	-104.5098991	0.99	
18319.00	90.580	3.840	6659.47	11767.89	11694.86	1317.14	40.2925896	-104.5098731	0.25	
18414.00	90.550	3.860	6658.54	11862.83	11789.64	1323.52	40.2928496	-104.5098464	0.04	
18509.00	90.800	3.950	6657.42	11957.78	11884.41	1329.99	40.2931095	-104.5098195	0.28	
18604.00	90.860	4.280	6656.04	12052.73	11979.16	1336.81	40.2933694	-104.5097912	0.35	
18698.00	90.680	4.170	6654.78	12146.69	12072.89	1343.73	40.2936264	-104.5097627	0.22	
18793.00	90.620	5.040	6653.70	12241.67	12167.58	1351.36	40.2938861	-104.5097315	0.92	
18888.00	90.830	2.720	6652.50	12336.61	12262.35	1357.79	40.2941460	-104.5097047	2.45	
18983.00	90.550	0.810	6651.35	12431.37	12357.29	1360.71	40.2944065	-104.5096904	2.03	
19078.00	90.520	0.380	6650.47	12525.99	12452.28	1361.70	40.2946672	-104.5096831	0.45	
19173.00	90.520	0.330	6649.60	12620.57	12547.28	1362.29	40.2949280	-104.5096772	0.05	
19267.00	90.680	0.030	6648.62	12714.12	12641.27	1362.58	40.2951859	-104.5096723	0.36	
19362.00	90.580	359.790	6647.58	12808.63	12736.26	1362.43	40.2954467	-104.5096691	0.27	
19457.00	90.400	0.090	6646.76	12903.14	12831.26	1362.33	40.2957074	-104.5096656	0.37	
19552.00	90.860	0.400	6645.72	12997.71	12926.25	1362.74	40.2959681	-104.5096604	0.58	
19647.00	90.860	0.880	6644.29	13092.32	13021.24	1363.80	40.2962288	-104.5096528	0.51	
19741.00	90.710	0.700	6643.00	13185.97	13115.22	1365.10	40.2964867	-104.5096444	0.25	
19836.00	90.770	0.570	6641.78	13280.59	13210.20	1366.15	40.2967474	-104.5096368	0.15	
19931.00	90.770	1.420	6640.50	13375.25	13305.18	1367.80	40.2970081	-104.5096271	0.89	
20026.00	90.770	0.820	6639.22	13469.94	13400.15	1369.66	40.2972687	-104.5096166	0.63	Last BH MWD Surveys (2392'FSL&322'FEL,SEC.23)
20061.00‡	90.770	0.820	6638.75	13504.81	13435.15	1370.16	40.2973647	-104.5096134	0.00	Projection to Bit (2427'FSL&322'FEL,SEC.23)



# Actual Wellpath Report

Booth C35-725 AWP  
Page 7 of 8



REFERENCE WELLPATH IDENTIFICATION			
Operator	NOBLE ENERGY, INC	Well	Booth C35-725
Field	WELD COUNTY (NOBLE NAD 83 GRID)	API	05-123-48922
Facility	SEC.02-T03N-R64W	Wellbore	Booth C35-725 AWB
Slot	SLOT#11 BOOTH C35-725 (442'FNL & 1739'FEL,SEC.02)		

TARGETS								
Name	TVD [ft]	North [ft]	East [ft]	Grid East [US ft]	Grid North [US ft]	Latitude	Longitude	Shape
Booth C35 SECTION 2	-1.00	0.00	0.00	3274874.68	1339279.21	40.2605300	-104.5150600	polygon
	2D Polygon: dimensions not calculated							
Booth C35 SECTION 23	-1.00	0.00	0.00	3274874.68	1339279.21	40.2605300	-104.5150600	polygon
	2D Polygon: dimensions not calculated							
Booth C35 SECTION 26	-1.00	0.00	0.00	3274874.68	1339279.21	40.2605300	-104.5150600	polygon
	2D Polygon: dimensions not calculated							
Booth C35 SECTION 35	-1.00	0.00	0.00	3274874.68	1339279.21	40.2605300	-104.5150600	polygon
	2D Polygon: dimensions not calculated							
Booth C35-725 BHL from Plat (2428'FSL/350'FEL,SEC.23)	6638.00	13435.72	1344.50	<b>3276219.11</b>	<b>1352714.31</b>	40.2973671	-104.5097054	point
Booth C35-725 TPZ for AC (200'FSL&410'FEL,SEC.35)	6716.00	655.34	1325.64	<b>3276200.26</b>	<b>1339934.51</b>	40.2622883	-104.5102843	point
Booth C35-725 TPZ from Plat (200'FSL&350'FEL,SEC.35)	6716.00	655.34	1325.64	<b>3276200.26</b>	<b>1339934.51</b>	40.2622883	-104.5102843	point

WELLPATH COMPOSITION - Ref Wellbore: Booth C35-725 AWB    Ref Wellpath: Booth C35-725 AWP					
Start MD [ft]	End MD [ft]	Positional Uncertainty Model	Log Name/Comment	Wellbore	Survey Date
0.00	1921.00	OWSG MWD rev2 (MS+IFR1)	13.5" Surface Hole EVO OWSG MWD rev2 (MS+IFR1) <164'-1921'>	Booth C35-725 AWB	1/19/2023
1921.00	20061.00	OWSG MWD rev2 (MS+IFR1)	8.5" Hole ATC Pro OWSG MWD rev2 + MS+IFR1 <2016'-20026'>	Booth C35-725 AWB	2/2/2023



# Actual Wellpath Report

Booth C35-725 AWP

Page 8 of 8



REFERENCE WELLPATH IDENTIFICATION			
Operator	NOBLE ENERGY, INC	Well	Booth C35-725
Field	WELD COUNTY (NOBLE NAD 83 GRID)	API	05-123-48922
Facility	SEC.02-T03N-R64W	Wellbore	Booth C35-725 AWB
Slot	SLOT#11 BOOTH C35-725 (442'FNL & 1739'FEL,SEC.02)		

WELLPATH COMMENTS				
MD [ft]	Inclination [°]	Azimuth [°]	TVD [ft]	Comment
164.00	0.280	286.890	164.00	1st BH MWD Surveys
7271.04	86.240	0.860	6713.31	Cross 200' Line (200'FSL&416'FEL,SEC.35)
7273.00	86.384	0.855	6713.43	Shallowest MD for Perf
20026.00	90.770	0.820	6639.22	Last BH MWD Surveys (2392'FSL&322'FEL,SEC.23)
20061.00	90.770	0.820	6638.75	Projection to Bit (2427'FSL&322'FEL,SEC.23)