

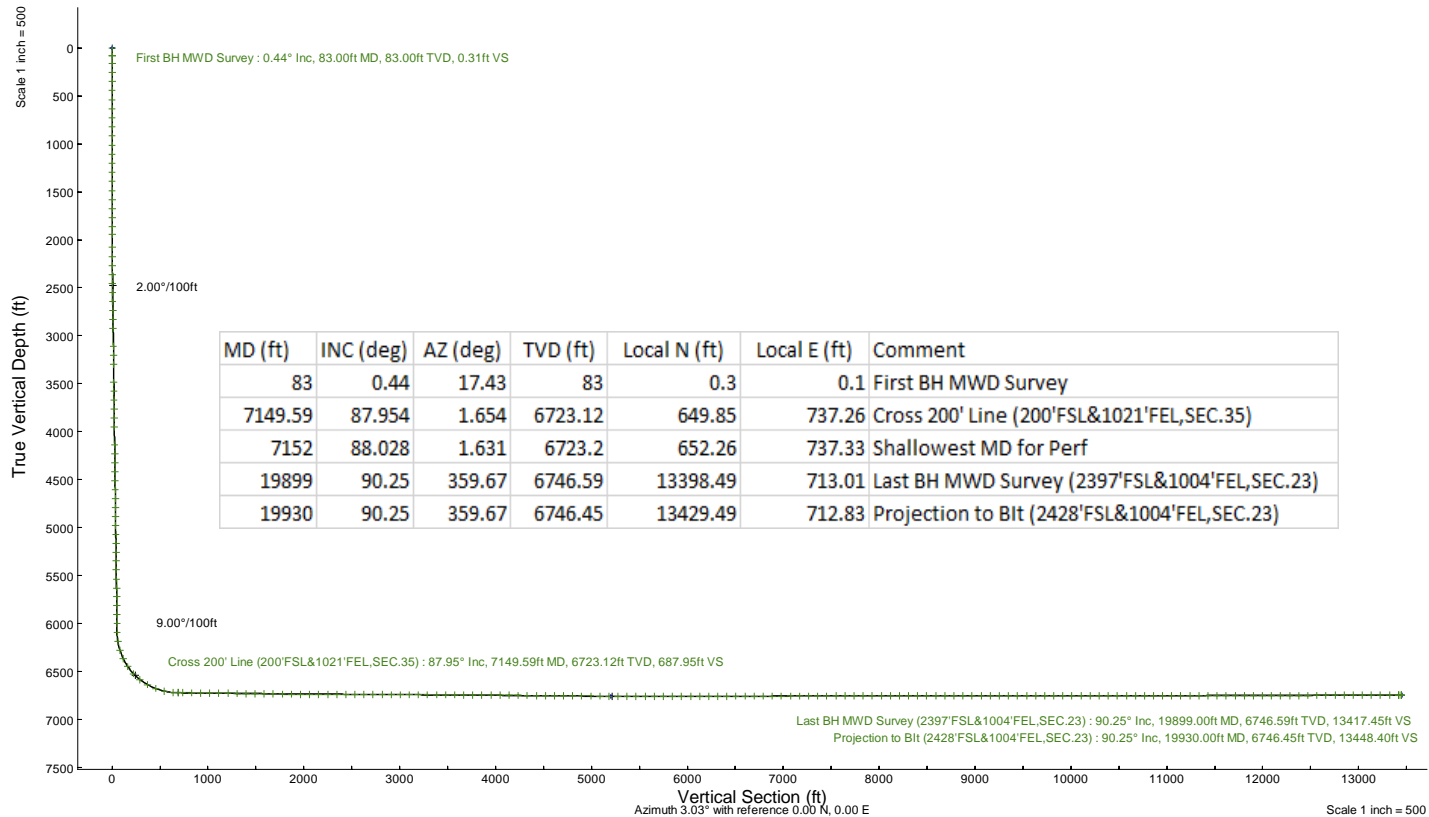
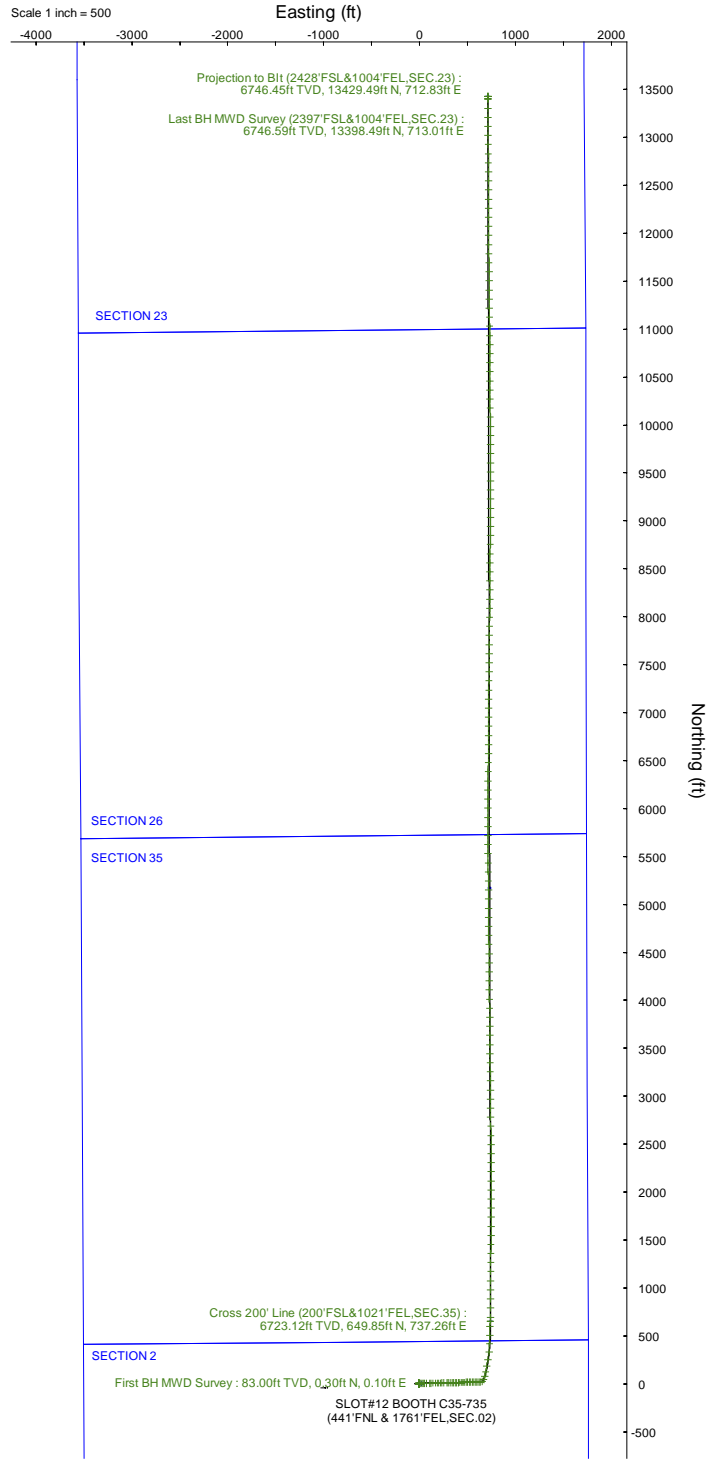
NOBLE ENERGY, INC

Location: COLORADO Slot: SLOT#12 BOOTH C35-735 (441'FNL & 1761'FEL,SEC.02)
 Field: WELD COUNTY (NOBLE NAD 83 GRID) Well: Booth C35-735
 Facility: SEC.02-T03N-R64W Wellbore: Booth C35-735 PWB

Plot reference wellpath is Booth C35-735 (REV-C.0) PWP
 True vertical depths are referenced to Patterson 268 (4722'GL+29'KB@4751'RKB) (RKB)
 Reference wellpath measured depths are referenced to Patterson 268 (4722'GL+29'KB@4751'RKB) (RKB)
 Patterson 268 (4722'GL+29'KB@4751'RKB) (RKB) to Mean Sea Level: 4751 feet
 Mean Sea Level to Mud line (At Slot: SLOT#12 BOOTH C35-735 (441'FNL & 1761'FEL,SEC.02)): 0 feet
 Offset wellpath MDs are referenced to each path's default MD datum
 Grid System: NAD83 / Lambert Colorado SP, Northern Zone (501), US feet
 North Reference: Grid north
 Scale: True distance
 Coordinates are in feet referenced to Slot
 Depths are in feet
 Created by: guenaler on 2023-01-30; Database: WA_Denver

Location Information

Facility Name		Grid East (US ft)	Grid North (US ft)	Latitude	Longitude	
SEC.02-T03N-R64W		3273800.050	1339386.610	40°15'39.1068"N	104°31'8.0615"W	
Slot	Local N (ft)	Local E (ft)	Grid East (US ft)	Grid North (US ft)	Latitude	Longitude
SLOT#12 BOOTH C35-735 (441'FNL & 1761'FEL,SEC.02)	-109.66	1052.35	3274852.351	1339278.957	40°15'37.9080"N	104°30'54.5040"W
Patterson 268 (4722'GL+29'KB@4751'RKB) (RKB) to Mud line (At Slot: SLOT#12 BOOTH C35-735 (441'FNL & 1761'FEL,SEC.02))				4751ft		
Mean Sea Level to Mud line (At Slot: SLOT#12 BOOTH C35-735 (441'FNL & 1761'FEL,SEC.02))				0ft		
Patterson 268 (4722'GL+29'KB@4751'RKB) (RKB) to Mean Sea Level				4751ft		



MD (ft)	INC (deg)	AZ (deg)	TVD (ft)	Local N (ft)	Local E (ft)	Comment
83	0.44	17.43	83	0.3	0.1	First BH MWD Survey
7149.59	87.954	1.654	6723.12	649.85	737.26	Cross 200' Line (200'FSL&1021'FEL,SEC.35)
7152	88.028	1.631	6723.2	652.26	737.33	Shallowest MD for Perf
19899	90.25	359.67	6746.59	13398.49	713.01	Last BH MWD Survey (2397'FSL&1004'FEL,SEC.23)
19930	90.25	359.67	6746.45	13429.49	712.83	Projection to Bit (2428'FSL&1004'FEL,SEC.23)

Scale 1 inch = 500



Actual Wellpath Report

Booth C35-735 AWP

Page 1 of 8



REFERENCE WELLPATH IDENTIFICATION			
Operator	NOBLE ENERGY, INC	Well	Booth C35-735
Field	WELD COUNTY (NOBLE NAD 83 GRID)	API	05-123-48926
Facility	SEC.02-T03N-R64W	Wellbore	Booth C35-735 AWB
Slot	SLOT#12 BOOTH C35-735 (441'FNL & 1761'FEL,SEC.02)		

REPORT SETUP INFORMATION			
Projection System	NAD83 / Lambert Colorado SP, Northern Zone (501), US feet	Software System	WellArchitect® 6.0
North Reference	Grid	User	Guenaler
Scale	0.999957	Report Generated	1/30/2023 at 10:42:17 AM
Convergence at slot	0.64° East	Database	WA_Denver

WELLPATH LOCATION						
	Local coordinates		Grid coordinates		Geographic coordinates	
	North[ft]	East[ft]	Easting[US ft]	Northing[US ft]	Latitude	Longitude
Slot Location	-109.66	1052.35	3274852.35	1339278.96	40.2605300°	-104.5151400°
Facility Reference Pt			3273800.05	1339388.61	40.2608630°	-104.5189060°
Field Reference Pt			3000000.00	4454105.15	48.7761986°	-105.5000000°

WELLPATH DATUM			
Calculation method	Minimum curvature	Patterson 268 (4722'GL+29'KB@4751'RKB) (RKB) to Facility Vertical Datum	4751.00ft
Horizontal Reference Pt	Slot	Patterson 268 (4722'GL+29'KB@4751'RKB) (RKB) to Mean Sea Level	4751.00ft
Vertical Reference Pt	Patterson 268 (4722'GL+29'KB@4751'RKB) (RKB)	Patterson 268 (4722'GL+29'KB@4751'RKB) (RKB) to Mud Line at Slot (SLOT#12 BOOTH C35-735 (441'FNL & 1761'FEL,SEC.02))	4751.00ft
MD Reference Pt	Patterson 268 (4722'GL+29'KB@4751'RKB) (RKB)	Section Origin	N 0.00, E 0.00 ft
Field Vertical Reference	Mean Sea Level	Section Azimuth	3.03°

REFERENCE WELLPATH IDENTIFICATION			
Operator	NOBLE ENERGY, INC	Well	Booth C35-735
Field	WELD COUNTY (NOBLE NAD 83 GRID)	API	05-123-48926
Facility	SEC.02-T03N-R64W	Wellbore	Booth C35-735 AWB
Slot	SLOT#12 BOOTH C35-735 (441'FNL & 1761'FEL,SEC.02)		

WELLPATH DATA (211 stations)										
MD [ft]	Inclination [°]	Azimuth [°]	TVD [ft]	Vert Sect [ft]	North [ft]	East [ft]	Latitude	Longitude	DLS ["/100ft]	Comments
0.00	0.000	17.430	0.00	0.00	0.00	0.00	40.2605300	-104.5151400	0.00	
83.00	0.440	17.430	83.00	0.31	0.30	0.10	40.2605308	-104.5151396	0.53	First BH MWD Survey
162.00	0.520	278.210	162.00	0.63	0.64	-0.17	40.2605318	-104.5151406	0.93	
252.00	0.520	274.560	251.99	0.68	0.74	-0.98	40.2605320	-104.5151435	0.04	
348.00	0.450	210.950	347.99	0.36	0.45	-1.61	40.2605313	-104.5151457	0.54	
443.00	0.370	236.880	442.99	-0.15	-0.04	-2.06	40.2605300	-104.5151474	0.21	
538.00	0.130	216.080	537.99	-0.42	-0.30	-2.38	40.2605293	-104.5151485	0.27	
633.00	0.160	206.260	632.99	-0.63	-0.50	-2.50	40.2605287	-104.5151490	0.04	
728.00	0.270	252.200	727.99	-0.83	-0.69	-2.77	40.2605282	-104.5151500	0.21	
823.00	0.020	292.720	822.99	-0.91	-0.75	-3.00	40.2605280	-104.5151508	0.27	
918.00	0.090	283.580	917.99	-0.89	-0.73	-3.09	40.2605281	-104.5151511	0.07	
1012.00	0.080	330.810	1011.99	-0.82	-0.65	-3.19	40.2605283	-104.5151515	0.07	
1107.00	0.220	290.690	1106.99	-0.71	-0.53	-3.39	40.2605286	-104.5151522	0.18	
1202.00	0.150	293.640	1201.99	-0.61	-0.42	-3.68	40.2605290	-104.5151532	0.07	
1297.00	0.280	294.500	1296.98	-0.48	-0.27	-4.00	40.2605294	-104.5151544	0.14	
1392.00	0.190	72.870	1391.98	-0.34	-0.13	-4.06	40.2605298	-104.5151546	0.46	
1486.00	0.150	355.060	1485.98	-0.17	0.04	-3.93	40.2605302	-104.5151541	0.23	
1581.00	0.420	357.020	1580.98	0.30	0.51	-3.95	40.2605315	-104.5151541	0.28	
1676.00	0.700	331.650	1675.98	1.14	1.37	-4.25	40.2605339	-104.5151552	0.39	
1771.00	0.770	318.840	1770.97	2.10	2.36	-4.94	40.2605366	-104.5151576	0.19	
1866.00	1.030	296.260	1865.96	2.89	3.22	-6.13	40.2605390	-104.5151618	0.46	
1941.00	1.050	290.120	1940.95	3.36	3.76	-7.38	40.2605405	-104.5151663	0.15	
2079.00	0.110	127.820	2078.94	3.66	4.11	-8.46	40.2605415	-104.5151702	0.84	
2174.00	0.140	178.040	2173.94	3.49	3.94	-8.39	40.2605411	-104.5151699	0.12	
2269.00	1.320	92.230	2268.93	3.39	3.78	-7.29	40.2605406	-104.5151660	1.39	
2364.00	2.310	88.930	2363.88	3.54	3.77	-4.28	40.2605405	-104.5151552	1.05	
2459.00	4.580	88.110	2458.70	4.00	3.93	1.42	40.2605408	-104.5151347	2.39	
2553.00	6.630	88.940	2552.25	4.71	4.16	10.60	40.2605411	-104.5151019	2.18	
2648.00	8.570	88.820	2646.41	5.62	4.40	23.16	40.2605414	-104.5150568	2.04	
2743.00	10.160	88.390	2740.14	6.82	4.79	38.62	40.2605420	-104.5150015	1.68	
2838.00	10.710	88.050	2833.57	8.27	5.32	55.81	40.2605429	-104.5149398	0.58	
2933.00	10.250	89.110	2926.99	9.61	5.75	73.09	40.2605436	-104.5148779	0.53	
3122.00	10.040	87.350	3113.03	12.39	6.78	106.36	40.2605454	-104.5147587	0.20	
3217.00	8.750	89.290	3206.75	13.69	7.25	121.86	40.2605462	-104.5147031	1.40	
3312.00	8.780	88.870	3300.64	14.68	7.48	136.33	40.2605464	-104.5146513	0.07	
3501.00	10.150	89.240	3487.07	16.83	7.99	167.41	40.2605468	-104.5145399	0.73	
3596.00	10.220	88.360	3580.57	18.07	8.34	184.20	40.2605473	-104.5144797	0.18	
3690.00	10.410	88.390	3673.05	19.44	8.82	201.03	40.2605481	-104.5144194	0.20	
3785.00	10.400	88.370	3766.49	20.83	9.30	218.18	40.2605489	-104.5143580	0.01	
3880.00	10.340	88.750	3859.94	22.17	9.73	235.27	40.2605495	-104.5142967	0.10	
3974.00	10.280	89.000	3952.42	23.39	10.06	252.09	40.2605499	-104.5142364	0.08	
4164.00	10.290	88.490	4139.37	25.92	10.80	286.01	40.2605509	-104.5141149	0.05	
4258.00	10.290	88.570	4231.85	27.24	11.24	302.79	40.2605516	-104.5140547	0.02	
4353.00	10.280	88.560	4325.33	28.56	11.66	319.75	40.2605523	-104.5139939	0.01	
4448.00	10.300	88.560	4418.80	29.89	12.09	336.71	40.2605529	-104.5139332	0.02	



Actual Wellpath Report

Booth C35-735 AWP

Page 3 of 8



REFERENCE WELLPATH IDENTIFICATION			
Operator	NOBLE ENERGY, INC	Well	Booth C35-735
Field	WELD COUNTY (NOBLE NAD 83 GRID)	API	05-123-48926
Facility	SEC.02-T03N-R64W	Wellbore	Booth C35-735 AWB
Slot	SLOT#12 BOOTH C35-735 (441'FNL & 1761'FEL,SEC.02)		

WELLPATH DATA (211 stations) † = interpolated, ‡ = extrapolated station

MD [ft]	Inclination [°]	Azimuth [°]	TVD [ft]	Vert Sect [ft]	North [ft]	East [ft]	Latitude	Longitude	DLS [°/100ft]	Comments
4542.00	10.300	88.730	4511.29	31.17	12.48	353.52	40.2605535	-104.5138729	0.03	
4637.00	10.300	88.490	4604.75	32.48	12.90	370.50	40.2605541	-104.5138121	0.05	
4732.00	10.300	88.490	4698.22	33.83	13.34	387.48	40.2605548	-104.5137512	0.00	
4826.00	10.260	88.810	4790.71	35.11	13.74	404.25	40.2605554	-104.5136911	0.07	
4921.00	10.370	88.550	4884.18	36.40	14.13	421.25	40.2605559	-104.5136302	0.13	
5016.00	10.210	88.250	4977.65	37.77	14.60	438.22	40.2605567	-104.5135694	0.18	
5110.00	8.290	87.050	5070.42	39.17	15.21	453.31	40.2605579	-104.5135153	2.05	
5205.00	10.330	88.690	5164.17	40.53	15.75	468.67	40.2605589	-104.5134602	2.17	
5300.00	10.080	88.460	5257.67	41.84	16.17	485.50	40.2605596	-104.5133999	0.27	
5394.00	10.170	88.770	5350.20	43.11	16.57	502.02	40.2605602	-104.5133407	0.11	
5489.00	10.120	88.940	5443.72	44.33	16.91	518.75	40.2605606	-104.5132808	0.06	
5584.00	10.170	89.010	5537.23	45.52	17.21	535.48	40.2605609	-104.5132208	0.05	
5679.00	10.230	88.450	5630.73	46.78	17.58	552.30	40.2605614	-104.5131605	0.12	
5773.00	10.210	88.760	5723.24	48.07	17.99	568.97	40.2605620	-104.5131008	0.06	
5868.00	10.160	89.120	5816.74	49.27	18.30	585.76	40.2605623	-104.5130406	0.09	
5963.00	10.150	89.190	5910.25	50.40	18.54	602.51	40.2605625	-104.5129806	0.02	
6058.00	9.490	88.920	6003.86	51.52	18.81	618.71	40.2605627	-104.5129225	0.70	
6153.00	11.180	89.110	6097.32	52.71	19.10	635.75	40.2605630	-104.5128615	1.78	
6247.00	13.680	55.390	6189.22	60.14	25.56	654.04	40.2605802	-104.5127957	8.03	
6342.00	18.940	28.340	6280.50	80.98	45.56	670.64	40.2606346	-104.5127354	9.59	
6437.00	24.470	12.000	6368.81	114.41	78.43	682.07	40.2607244	-104.5126932	8.57	
6532.00	34.410	10.470	6451.44	160.58	124.18	691.06	40.2608498	-104.5126591	10.49	
6627.00	43.590	10.560	6525.19	219.79	182.90	701.96	40.2610106	-104.5126177	9.66	
6721.00	52.700	9.220	6587.84	289.23	251.81	713.92	40.2611994	-104.5125722	9.75	
6816.00	61.780	6.320	6639.20	368.76	330.88	724.60	40.2614161	-104.5125307	9.90	
6911.00	68.600	1.250	6679.07	454.90	416.85	730.18	40.2616519	-104.5125073	8.66	
7006.00	77.020	1.700	6707.12	545.54	507.49	732.53	40.2619006	-104.5124953	8.87	
7101.00	86.460	2.120	6720.75	639.43	601.35	735.66	40.2621581	-104.5124803	9.95	
7149.59†	87.954	1.654	6723.12	687.95	649.85	737.26	40.2622912	-104.5124726	3.22	Cross 200' Line (200'FSL&1021'FEL,SEC.35)
7152.00†	88.028	1.631	6723.20	690.36	652.26	737.33	40.2622978	-104.5124723	3.22	Shallowest MD for Perf
7195.00	89.350	1.220	6724.19	733.33	695.23	738.40	40.2624157	-104.5124668	3.22	
7290.00	89.170	1.130	6725.41	828.27	790.20	740.34	40.2626763	-104.5124560	0.21	
7385.00	89.260	0.330	6726.71	923.19	885.19	741.55	40.2629370	-104.5124479	0.85	
7480.00	89.200	0.170	6727.99	1018.06	980.18	741.97	40.2631977	-104.5124426	0.18	
7575.00	89.170	0.300	6729.34	1112.94	1075.17	742.36	40.2634584	-104.5124374	0.14	
7670.00	89.170	0.380	6730.72	1207.83	1170.15	742.92	40.2637192	-104.5124316	0.08	
7764.00	89.110	0.060	6732.13	1301.70	1264.14	743.28	40.2639771	-104.5124265	0.35	
7859.00	89.110	0.280	6733.60	1396.57	1359.13	743.57	40.2642378	-104.5124217	0.23	
7954.00	89.290	0.340	6734.93	1491.46	1454.12	744.08	40.2644985	-104.5124161	0.20	
8048.00	89.080	0.350	6736.27	1585.34	1548.11	744.65	40.2647565	-104.5124103	0.22	
8143.00	89.570	0.310	6737.39	1680.23	1643.10	745.19	40.2650172	-104.5124046	0.52	
8238.00	89.230	0.400	6738.38	1775.12	1738.09	745.78	40.2652779	-104.5123987	0.37	
8333.00	89.450	0.380	6739.48	1870.01	1833.09	746.43	40.2655387	-104.5123926	0.23	
8428.00	89.480	0.480	6740.36	1964.91	1928.08	747.14	40.2657994	-104.5123862	0.11	
8522.00	89.380	0.210	6741.30	2058.80	2022.07	747.71	40.2660573	-104.5123804	0.31	

REFERENCE WELLPATH IDENTIFICATION			
Operator	NOBLE ENERGY, INC	Well	Booth C35-735
Field	WELD COUNTY (NOBLE NAD 83 GRID)	API	05-123-48926
Facility	SEC.02-T03N-R64W	Wellbore	Booth C35-735 AWB
Slot	SLOT#12 BOOTH C35-735 (441'FNL & 1761'FEL,SEC.02)		

WELLPATH DATA (211 stations)										
MD [ft]	Inclination [°]	Azimuth [°]	TVD [ft]	Vert Sect [ft]	North [ft]	East [ft]	Latitude	Longitude	DLS [°/100ft]	Comments
8617.00	89.540	0.590	6742.19	2153.70	2117.07	748.37	40.2663181	-104.5123743	0.43	
8712.00	89.820	359.350	6742.72	2248.56	2212.06	748.32	40.2665788	-104.5123707	1.34	
8807.00	89.850	359.390	6743.00	2343.37	2307.06	747.28	40.2668396	-104.5123706	0.05	
8901.00	89.820	359.380	6743.27	2437.17	2401.05	746.27	40.2670976	-104.5123705	0.03	
8996.00	89.880	359.390	6743.52	2531.98	2496.04	745.25	40.2673584	-104.5123703	0.06	
9091.00	89.910	359.490	6743.69	2626.79	2591.04	744.32	40.2676191	-104.5123699	0.11	
9186.00	89.850	359.400	6743.89	2721.61	2686.03	743.40	40.2678799	-104.5123694	0.11	
9281.00	89.820	359.350	6744.16	2816.41	2781.03	742.36	40.2681407	-104.5123693	0.06	
9375.00	89.850	359.340	6744.44	2910.22	2875.02	741.29	40.2683987	-104.5123694	0.03	
9470.00	89.850	359.340	6744.68	3005.02	2970.02	740.19	40.2686595	-104.5123695	0.00	
9565.00	89.880	359.450	6744.91	3099.83	3065.01	739.19	40.2689203	-104.5123693	0.12	
9660.00	89.880	359.310	6745.11	3194.64	3160.00	738.16	40.2691810	-104.5123692	0.15	
9755.00	89.910	359.350	6745.28	3289.44	3255.00	737.05	40.2694418	-104.5123694	0.05	
9849.00	89.880	359.490	6745.45	3383.25	3348.99	736.10	40.2696998	-104.5123691	0.15	
9944.00	89.880	359.370	6745.65	3478.06	3443.99	735.15	40.2699606	-104.5123687	0.13	
10039.00	89.510	359.450	6746.16	3572.87	3538.98	734.18	40.2702214	-104.5123684	0.40	
10134.00	89.540	359.590	6746.95	3667.69	3633.97	733.38	40.2704821	-104.5123674	0.15	
10229.00	89.570	359.510	6747.68	3762.51	3728.97	732.63	40.2707429	-104.5123663	0.09	
10323.00	89.480	359.590	6748.46	3856.33	3822.96	731.90	40.2710009	-104.5123652	0.13	
10418.00	89.480	359.260	6749.32	3951.14	3917.95	730.94	40.2712617	-104.5123648	0.35	
10513.00	89.540	359.430	6750.14	4045.94	4012.94	729.86	40.2715224	-104.5123649	0.19	
10608.00	89.480	359.390	6750.95	4140.75	4107.94	728.88	40.2717832	-104.5123647	0.08	
10703.00	89.480	359.350	6751.81	4235.55	4202.93	727.83	40.2720439	-104.5123646	0.04	
10798.00	89.480	359.260	6752.67	4330.35	4297.91	726.68	40.2723047	-104.5123650	0.09	
10893.00	89.450	359.360	6753.56	4425.14	4392.90	725.54	40.2725655	-104.5123653	0.11	
10987.00	89.480	359.430	6754.44	4518.95	4486.89	724.54	40.2728235	-104.5123651	0.08	
11082.00	89.480	359.540	6755.30	4613.76	4581.89	723.69	40.2730842	-104.5123643	0.12	
11177.00	89.510	359.570	6756.14	4708.58	4676.88	722.95	40.2733450	-104.5123632	0.04	
11272.00	89.570	359.490	6756.90	4803.40	4771.87	722.17	40.2736058	-104.5123622	0.11	
11367.00	89.420	359.320	6757.74	4898.21	4866.86	721.19	40.2738665	-104.5123619	0.24	
11461.00	89.480	359.410	6758.64	4992.01	4960.85	720.15	40.2741245	-104.5123619	0.12	
11556.00	89.600	359.540	6759.40	5086.82	5055.85	719.28	40.2743853	-104.5123612	0.19	
11651.00	89.570	359.560	6760.09	5181.65	5150.84	718.53	40.2746461	-104.5123601	0.04	
11746.00	89.480	359.350	6760.88	5276.46	5245.83	717.63	40.2749068	-104.5123596	0.24	
11841.00	90.310	359.580	6761.05	5371.27	5340.83	716.74	40.2751676	-104.5123590	0.91	
11935.00	90.120	359.650	6760.70	5465.10	5434.83	716.11	40.2754256	-104.5123575	0.22	
12030.00	89.660	359.560	6760.88	5559.93	5529.82	715.45	40.2756864	-104.5123560	0.49	
12125.00	89.780	359.440	6761.35	5654.75	5624.82	714.62	40.2759471	-104.5123552	0.18	
12220.00	90.340	359.690	6761.25	5749.58	5719.82	713.90	40.2762079	-104.5123540	0.65	
12315.00	90.150	359.610	6760.84	5844.41	5814.81	713.32	40.2764687	-104.5123523	0.22	
12409.00	90.180	359.450	6760.57	5938.24	5908.81	712.55	40.2767267	-104.5123513	0.17	
12504.00	90.180	0.700	6760.27	6033.11	6003.81	712.67	40.2769874	-104.5123471	1.32	
12599.00	90.090	0.460	6760.05	6128.02	6098.80	713.64	40.2772482	-104.5123398	0.27	
12694.00	89.940	0.380	6760.02	6222.92	6193.80	714.33	40.2775089	-104.5123335	0.18	
12789.00	90.060	0.580	6760.02	6317.83	6288.80	715.13	40.2777696	-104.5123269	0.25	



Actual Wellpath Report

Booth C35-735 AWP

Page 5 of 8



REFERENCE WELLPATH IDENTIFICATION			
Operator	NOBLE ENERGY, INC	Well	Booth C35-735
Field	WELD COUNTY (NOBLE NAD 83 GRID)	API	05-123-48926
Facility	SEC.02-T03N-R64W	Wellbore	Booth C35-735 AWB
Slot	SLOT#12 BOOTH C35-735 (441'FNL & 1761'FEL,SEC.02)		

WELLPATH DATA (211 stations)										
MD [ft]	Inclination [°]	Azimuth [°]	TVD [ft]	Vert Sect [ft]	North [ft]	East [ft]	Latitude	Longitude	DLS [°/100ft]	Comments
12883.00	90.090	0.520	6759.90	6411.74	6382.79	716.03	40.2780276	-104.5123199	0.07	
12978.00	90.430	0.890	6759.47	6506.66	6477.78	717.20	40.2782883	-104.5123119	0.53	
13073.00	90.120	0.540	6759.01	6601.58	6572.77	718.39	40.2785490	-104.5123039	0.49	
13168.00	89.970	359.900	6758.94	6696.46	6667.77	718.75	40.2788097	-104.5122988	0.69	
13262.00	90.060	0.480	6758.91	6790.35	6761.77	719.06	40.2790677	-104.5122939	0.62	
13357.00	89.940	0.070	6758.91	6885.24	6856.77	719.52	40.2793284	-104.5122885	0.45	
13452.00	90.090	0.570	6758.89	6980.13	6951.77	720.05	40.2795892	-104.5122828	0.55	
13547.00	90.220	0.660	6758.63	7075.05	7046.76	721.07	40.2798499	-104.5122753	0.17	
13642.00	90.060	0.320	6758.40	7169.95	7141.76	721.88	40.2801106	-104.5122686	0.40	
13736.00	90.060	0.600	6758.30	7263.86	7235.76	722.64	40.2803686	-104.5122622	0.30	
13831.00	90.090	0.710	6758.18	7358.77	7330.75	723.72	40.2806293	-104.5122545	0.12	
13926.00	90.220	0.710	6757.92	7453.70	7425.74	724.90	40.2808900	-104.5122465	0.14	
14021.00	90.120	0.540	6757.64	7548.61	7520.74	725.93	40.2811507	-104.5122390	0.21	
14116.00	90.030	0.580	6757.51	7643.52	7615.73	726.86	40.2814114	-104.5122319	0.10	
14210.00	90.120	0.320	6757.39	7737.43	7709.73	727.60	40.2816694	-104.5122255	0.29	
14305.00	90.150	0.650	6757.17	7832.33	7804.72	728.41	40.2819301	-104.5122188	0.35	
14400.00	90.150	0.590	6756.92	7927.25	7899.72	729.43	40.2821908	-104.5122113	0.06	
14495.00	90.120	0.430	6756.69	8022.16	7994.71	730.28	40.2824515	-104.5122045	0.17	
14590.00	90.220	0.600	6756.41	8117.06	8089.71	731.13	40.2827122	-104.5121976	0.21	
14684.00	89.970	0.360	6756.26	8210.97	8183.71	731.92	40.2829702	-104.5121911	0.37	
14779.00	90.090	0.550	6756.21	8305.87	8278.70	732.67	40.2832309	-104.5121846	0.24	
14874.00	90.030	0.500	6756.11	8400.78	8373.70	733.55	40.2834917	-104.5121777	0.08	
14969.00	90.030	0.600	6756.06	8495.69	8468.70	734.46	40.2837524	-104.5121706	0.11	
15064.00	90.000	0.470	6756.03	8590.60	8563.69	735.34	40.2840131	-104.5121636	0.14	
15158.00	90.150	0.760	6755.91	8684.52	8657.69	736.35	40.2842710	-104.5121562	0.35	
15253.00	90.030	0.520	6755.76	8779.44	8752.68	737.41	40.2845318	-104.5121487	0.28	
15348.00	90.120	0.640	6755.64	8874.35	8847.67	738.38	40.2847925	-104.5121414	0.16	
15443.00	90.150	0.590	6755.41	8969.26	8942.67	739.40	40.2850532	-104.5121340	0.06	
15538.00	90.120	0.600	6755.19	9064.18	9037.66	740.38	40.2853139	-104.5121266	0.03	
15633.00	90.060	0.570	6755.04	9159.09	9132.66	741.35	40.2855746	-104.5121194	0.07	
15727.00	89.970	0.610	6755.01	9253.01	9226.65	742.32	40.2858326	-104.5121121	0.10	
15822.00	90.030	359.630	6755.01	9347.88	9321.65	742.52	40.2860933	-104.5121076	1.03	
15917.00	90.180	359.550	6754.84	9442.71	9416.65	741.84	40.2863541	-104.5121063	0.18	
16012.00	90.060	359.400	6754.64	9537.53	9511.64	740.97	40.2866148	-104.5121056	0.20	
16107.00	90.310	359.970	6754.33	9632.36	9606.64	740.45	40.2868756	-104.5121037	0.66	
16202.00	90.060	359.520	6754.03	9727.21	9701.64	740.02	40.2871364	-104.5121014	0.54	
16296.00	90.220	359.640	6753.80	9821.04	9795.64	739.33	40.2873944	-104.5121001	0.21	
16391.00	89.910	359.630	6753.69	9915.87	9890.64	738.73	40.2876552	-104.5120985	0.33	
16486.00	89.850	359.450	6753.89	10010.69	9985.63	737.97	40.2879159	-104.5120974	0.20	
16581.00	89.880	359.660	6754.11	10105.52	10080.63	737.23	40.2881767	-104.5120963	0.22	
16676.00	89.820	359.500	6754.36	10200.34	10175.63	736.53	40.2884375	-104.5120950	0.18	
16770.00	89.720	359.470	6754.74	10294.16	10269.62	735.69	40.2886955	-104.5120943	0.11	
16865.00	90.000	359.890	6754.97	10389.00	10364.62	735.16	40.2889562	-104.5120924	0.53	
16960.00	89.820	359.570	6755.12	10483.84	10459.62	734.71	40.2892170	-104.5120902	0.39	
17055.00	89.880	359.310	6755.37	10578.65	10554.61	733.78	40.2894778	-104.5120897	0.28	

REFERENCE WELLPATH IDENTIFICATION			
Operator	NOBLE ENERGY, INC	Well	Booth C35-735
Field	WELD COUNTY (NOBLE NAD 83 GRID)	API	05-123-48926
Facility	SEC.02-T03N-R64W	Wellbore	Booth C35-735 AWB
Slot	SLOT#12 BOOTH C35-735 (441'FNL & 1761'FEL,SEC.02)		

WELLPATH DATA (211 stations) † = interpolated, ‡ = extrapolated station										
MD [ft]	Inclination [°]	Azimuth [°]	TVD [ft]	Vert Sect [ft]	North [ft]	East [ft]	Latitude	Longitude	DLS [°/100ft]	Comments
17149.00	89.910	359.540	6755.54	10672.47	10648.61	732.84	40.2897358	-104.5120893	0.25	
17244.00	89.940	359.570	6755.67	10767.29	10743.61	732.10	40.2899966	-104.5120882	0.04	
17339.00	89.940	359.670	6755.77	10862.12	10838.60	731.47	40.2902573	-104.5120867	0.11	
17434.00	90.000	359.700	6755.82	10956.96	10933.60	730.95	40.2905181	-104.5120847	0.07	
17529.00	89.820	359.570	6755.96	11051.79	11028.60	730.34	40.2907789	-104.5120831	0.23	
17623.00	89.780	359.430	6756.29	11145.62	11122.60	729.52	40.2910369	-104.5120823	0.15	
17718.00	89.880	359.600	6756.57	11240.44	11217.59	728.72	40.2912977	-104.5120814	0.21	
17813.00	89.880	359.340	6756.77	11335.25	11312.59	727.84	40.2915584	-104.5120808	0.27	
17908.00	90.000	359.360	6756.87	11430.06	11407.58	726.76	40.2918192	-104.5120808	0.13	
18003.00	90.090	359.400	6756.80	11524.86	11502.58	725.73	40.2920800	-104.5120807	0.10	
18097.00	90.060	359.500	6756.68	11618.68	11596.57	724.83	40.2923380	-104.5120802	0.11	
18192.00	90.120	359.540	6756.53	11713.50	11691.57	724.04	40.2925988	-104.5120793	0.08	
18287.00	90.030	359.530	6756.40	11808.32	11786.56	723.26	40.2928595	-104.5120782	0.10	
18382.00	90.000	359.650	6756.38	11903.15	11881.56	722.58	40.2931203	-104.5120769	0.13	
18477.00	90.120	359.440	6756.28	11997.98	11976.56	721.83	40.2933811	-104.5120758	0.25	
18571.00	90.710	359.940	6755.60	12091.81	12070.55	721.32	40.2936391	-104.5120738	0.82	
18666.00	90.310	359.520	6754.75	12186.65	12165.55	720.87	40.2938998	-104.5120717	0.61	
18761.00	90.490	359.910	6754.09	12281.49	12260.55	720.40	40.2941606	-104.5120696	0.45	
18856.00	90.520	359.820	6753.25	12376.34	12355.54	720.18	40.2944213	-104.5120666	0.10	
18951.00	90.460	359.810	6752.44	12471.19	12450.54	719.87	40.2946821	-104.5120639	0.06	
19046.00	90.280	359.440	6751.82	12566.02	12545.53	719.25	40.2949429	-104.5120623	0.43	
19141.00	90.460	359.530	6751.21	12660.83	12640.53	718.40	40.2952036	-104.5120616	0.21	
19235.00	90.460	359.520	6750.46	12754.65	12734.52	717.62	40.2954616	-104.5120606	0.01	
19330.00	90.340	359.660	6749.79	12849.48	12829.52	716.94	40.2957224	-104.5120593	0.19	
19425.00	90.340	359.570	6749.23	12944.31	12924.51	716.30	40.2959832	-104.5120577	0.09	
19520.00	90.370	359.620	6748.64	13039.14	13019.51	715.63	40.2962439	-104.5120564	0.06	
19615.00	90.280	359.580	6748.10	13133.96	13114.50	714.96	40.2965047	-104.5120549	0.10	
19709.00	90.310	359.560	6747.62	13227.79	13208.50	714.26	40.2967627	-104.5120537	0.04	
19804.00	90.340	359.630	6747.08	13322.62	13303.50	713.59	40.2970235	-104.5120523	0.08	
19899.00	90.250	359.670	6746.59	13417.45	13398.49	713.01	40.2972842	-104.5120506	0.10	Last BH MWD Survey (2397'FSL&1004'FEL,SEC.23)
19930.00‡	90.250	359.670	6746.45	13448.40	13429.49	712.83	40.2973693	-104.5120500	0.00	Projection to Blt (2428'FSL&1004'FEL,SEC.23)

REFERENCE WELLPATH IDENTIFICATION			
Operator	NOBLE ENERGY, INC	Well	Booth C35-735
Field	WELD COUNTY (NOBLE NAD 83 GRID)	API	05-123-48926
Facility	SEC.02-T03N-R64W	Wellbore	Booth C35-735 AWB
Slot	SLOT#12 BOOTH C35-735 (441'FNL & 1761'FEL,SEC.02)		

TARGETS								
Name	TVD [ft]	North [ft]	East [ft]	Grid East [US ft]	Grid North [US ft]	Latitude	Longitude	Shape
Booth C35 SECTION 2	-1.00	0.25	22.33	3274874.68	1339279.21	40.2605300	-104.5150600	polygon
	2D Polygon: dimensions not calculated							
Booth C35 SECTION 23	-1.00	0.25	22.33	3274874.68	1339279.21	40.2605300	-104.5150600	polygon
	2D Polygon: dimensions not calculated							
Booth C35 SECTION 26	-1.00	0.25	22.33	3274874.68	1339279.21	40.2605300	-104.5150600	polygon
	2D Polygon: dimensions not calculated							
Booth C35 SECTION 35	-1.00	0.25	22.33	3274874.68	1339279.21	40.2605300	-104.5150600	polygon
	2D Polygon: dimensions not calculated							
Booth C35-735 TPZ for AC(200'FSL&1016'FEL,SEC.35)	6725.00	649.85	741.96	3275594.27	1339928.77	40.2622910	-104.5124558	point
Booth C35-735 BHL (200'FSL&1005'FEL,SEC.23)	6749.00	13430.52	711.66	3275563.98	1352708.87	40.2973722	-104.5120542	point
Booth C35-735 Rev-2 BHL (2429'FSL&1005'FEL,SEC.23)	6749.00	13430.52	711.66	3275563.98	1352708.87	40.2973722	-104.5120542	point
Booth C35-735 VS TARGET	6761.00	5168.79	731.09	3275583.41	1344447.51	40.2746949	-104.5123144	point

WELLPATH COMPOSITION - Ref Wellbore: Booth C35-735 AWB Ref Wellpath: Booth C35-735 AWP					
Start MD [ft]	End MD [ft]	Positional Uncertainty Model	Log Name/Comment	Wellbore	Survey Date
0.00	1941.00	OWSG MWD rev2 (MS+IFR1)	13.5" Surface Hole EVO OWSG MWD rev2 (MS+IFR1) <83'-1941'>	Booth C35-735 AWB	1/19/2023
1941.00	19930.00	OWSG MWD rev2 (MS+IFR1)	8.5" Hole ATC Lucida OWSG MWD rev2 (MS+IFR1) <2079'-19899'>	Booth C35-735 AWB	1/27/2023



Actual Wellpath Report

Booth C35-735 AWP

Page 8 of 8



REFERENCE WELLPATH IDENTIFICATION			
Operator	NOBLE ENERGY, INC	Well	Booth C35-735
Field	WELD COUNTY (NOBLE NAD 83 GRID)	API	05-123-48926
Facility	SEC.02-T03N-R64W	Wellbore	Booth C35-735 AWB
Slot	SLOT#12 BOOTH C35-735 (441'FNL & 1761'FEL,SEC.02)		

WELLPATH COMMENTS				
MD [ft]	Inclination [°]	Azimuth [°]	TVD [ft]	Comment
83.00	0.440	17.430	83.00	First BH MWD Survey
7149.59	87.954	1.654	6723.12	Cross 200' Line (200'FSL&1021'FEL,SEC.35)
7152.00	88.028	1.631	6723.20	Shallowest MD for Perf
19899.00	90.250	359.670	6746.59	Last BH MWD Survey (2397'FSL&1004'FEL,SEC.23)
19930.00	90.250	359.670	6746.45	Projection to Bit (2428'FSL&1004'FEL,SEC.23)