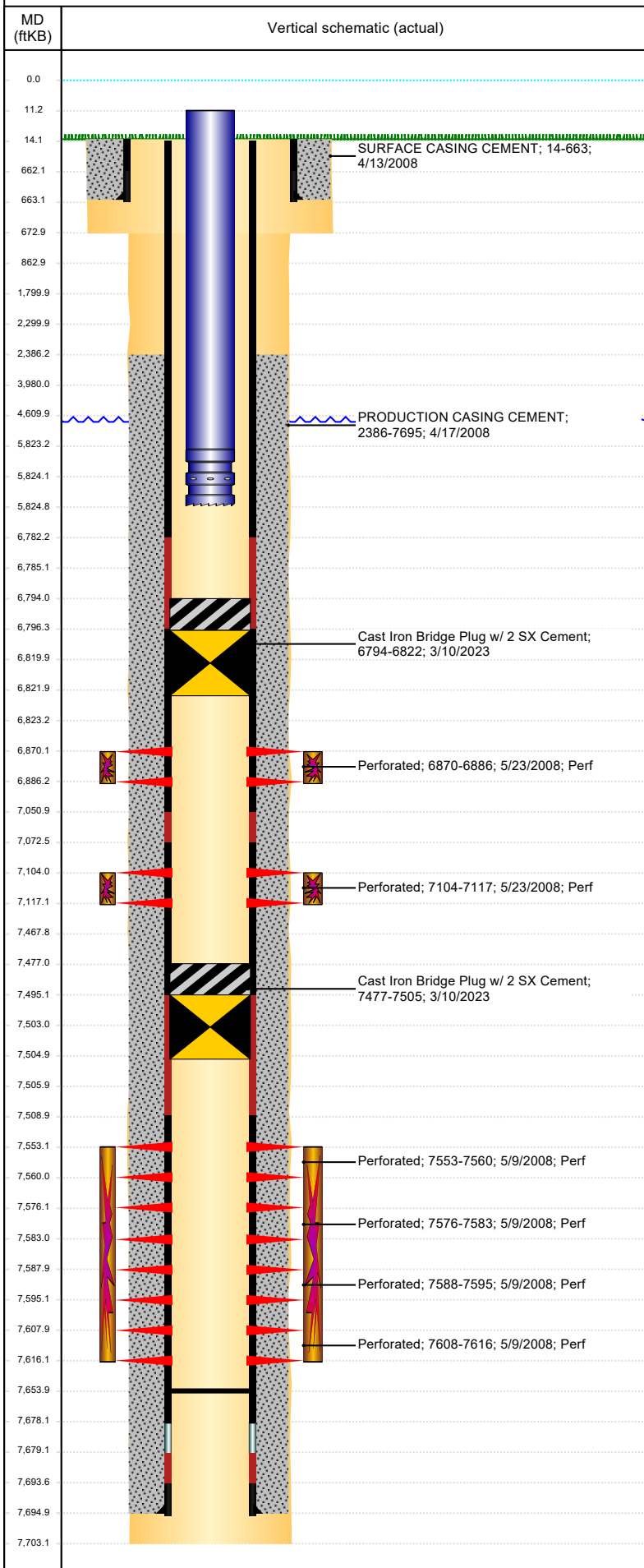




P&A Wellbore For State

Well Name: FRIDGE USX H13-22

Land, Original Hole, 3/28/2023 3:12:14 PM



Well Header									
Surface UWI 0512325639			Business Unit Rockies			Gov Auth Dist		Prod Tree Loc Land	
Orig. KB to Gnd (ft) 14.00		Original Spud Date 4/13/2008		Abandon Date		Well Sub-Status TA			High Pres N
Comment Sundry filed 4/7/08 - change location									
Surface Location (Congressional)									
Quarter 3 NE	Quarter 4 SE	Section 13	Township 3	Twnshp N N	Range 65	Rng E/W W	Latitude (°) 40.224688761	Longitude (°) -104.607117543	
Wellbore Sections									
Section Des			Hole Size (in)			Act Top (ftKB)		Act Btm (ftKB)	
SURFACE			12 1/4			14.0		673.0	
PRODUCTION			7 7/8			673.0		7,703.0	
Casing Strings									
Csg Des			Run Date		OD (in)	Wt/Len (lb/ft)	Grade	Top Depth (MD) (ftKB)	Set Depth (MD) (ftKB)
Surface			4/13/2008		8 5/8	24.00	J-55	0	663
Production Casing			4/17/2008		4 1/2	11.60	M-80	14.1	7695
Cement									
Des					Start Date		Top (ftKB)		Btm (ftKB)
SURFACE CASING CEMENT					4/13/2008		14.0		663.0
PRODUCTION CASING CEMENT					4/17/2008		2,386.0		7,695.0
Zone Statuses									
Zone Name	Status Date	Status	Fluid Type	Job				Prod Method	
J SAND	5/25/2008	PR	Gas	DRILLING/COMPLETION - ORIGINAL, 4/13/2008 00:00					
J SAND	3/10/2023	Closed	Gas	Abandon Well - Temporary, 3/8/2023 16:00					
CODELL	5/25/2008	PR	Gas	DRILLING/COMPLETION - ORIGINAL, 4/13/2008 00:00					
CODELL	3/10/2023	Closed	Gas	Abandon Well - Temporary, 3/8/2023 16:00					
NIOBRARA	5/25/2008	PR	Gas	DRILLING/COMPLETION - ORIGINAL, 4/13/2008 00:00					
NIOBRARA	3/10/2023	Closed	Gas	Abandon Well - Temporary, 3/8/2023 16:00					
Perforation Data									
Linked Zone		Explosive Type	Entered Shot Total	Top (ftKB)		Btm (ftKB)		Date	
NIOBRARA, Original Hole			64	6,870.0		6,886.0		5/23/2008	
CODELL, Original Hole			52	7,104.0		7,117.0		5/23/2008	
J SAND, Original Hole			28	7,553.0		7,560.0		5/9/2008	
J SAND, Original Hole			28	7,576.0		7,583.0		5/9/2008	
J SAND, Original Hole			28	7,588.0		7,595.0		5/9/2008	
J SAND, Original Hole			32	7,608.0		7,616.0		5/9/2008	
Stimulation Intervals									
Zone			Start Date			Top (ftKB)		Btm (ftKB)	
NIOBRARA, Original Hole			5/23/2008			6,870.0		6,886.0	
CODELL, Original Hole			5/23/2008			7,104.0		7,117.0	
J SAND, Original Hole			5/23/2008			7,553.0		7,616.0	
Other In Hole									
Run Date	Des				Make	OD (in)	Top (ftKB)	Btm (ftKB)	
3/10/2023	Cast Iron Bridge Plug w/ 2 SX Cement					4	6,794.0	6,822.0	
3/10/2023	Cast Iron Bridge Plug w/ 2 SX Cement					4	7,477.0	7,505.0	
Logs									
Date	Type						Depth Top (MD) (ftKB)	Btm (ftKB)	
4/17/2008	Caliper/Comp. Density/Neutron/GR/SP/ML						2,640	7,687.0	
4/17/2008	DIL/GR/SP/Caliper						672	7,707.0	
4/29/2008	CBL/CCL/GR						2,150	7,552.0	
5/9/2008	CBL/CCL/GR						7,412	7,671.0	
Plug Back Total Depths									
Date	Type		Com						PBTD (ftKB)
5/8/2008	FILL								7,669
11/6/2008	PLUG REMNANTS								7,654