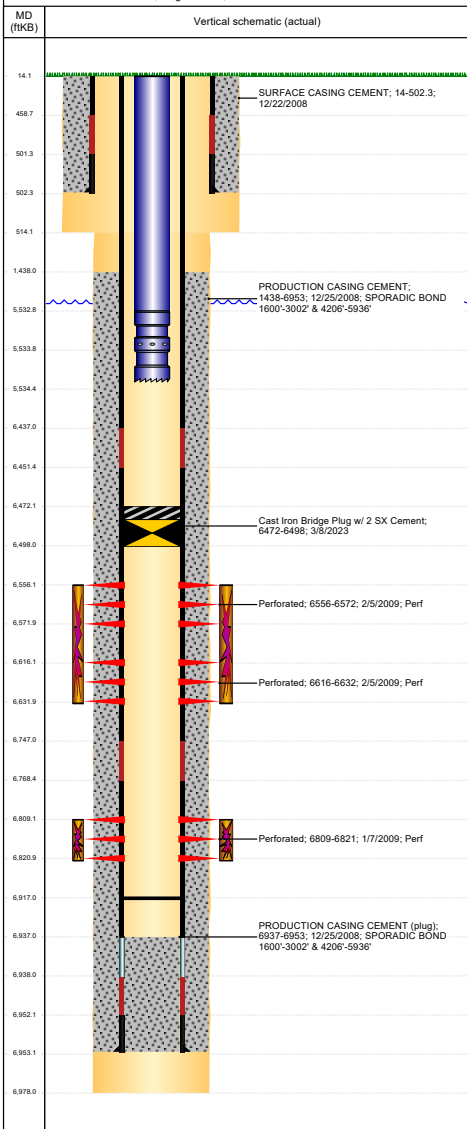




P&A Wellbore For State

Well Name: BOOTH C25-19

Land, Original Hole, 3/28/2023 11:47:39 AM



Well Header									
Surface UWI 0512327162			Business Unit Rockies			Gov Auth Dist		Prod Tree Loc Land	
Orig. KB to Gnd (ft) 14.00		Original Spud Date 12/21/2008		Abandon Date		Well Sub-Status TA		High Pre N	
Comment									
Surface Location (Congressional)									
Quarter 3		Quarter 4	Section	Township	Range	Rng E/W	Latitude (°)		Longitude (°)
NE		NW	25	4	N	64	W	40.287311654 -104.503819341	
Wellbore Sections									
Section Des			Hole Size (in)			Act Top (ftKB)		Act Btm (ftKB)	
SURFACE			12 1/4			14.0		514.0	
PRODUCTION			7 7/8			514.0		6,978.0	
Casing Strings									
Csg Des		Run Date		OD (in)	Wt/Len (lb/ft)	Grade	Top Depth (MD) (ftKB)	Set Depth (MD) (ftKB)	
Surface		12/22/2008		8 5/8	24.00	J-55	14	502.3	
Production Casing		12/25/2008		4 1/2	11.60	M-80	14.2	6953	
Cement									
Des				Start Date		Top (ftKB)		Btm (ftKB)	
SURFACE CASING CEMENT				12/22/2008		14.0		502.3	
PRODUCTION CASING CEMENT				12/25/2008		1,438.0		6,953.0	
Zone Statuses									
Zone Name		Status Date	Status	Fluid Type	Job				Prod Method
CODELL		2/6/2009	PR		DRILLING/COMPLETION - ORIGINAL 12/21/2008 07:1				
NIORARA		2/6/2009	PR		DRILLING/COMPLETION - ORIGINAL 12/21/2008 07:1				
Perforation Data									
Linked Zone			Explosive Type	Entered Shot Total	Top (ftKB)		Btm (ftKB)		Date
NIORARA, Original Hole			A	32	6,556.0		6,572.0		2/5/2009
NIORARA, Original Hole			B	32	6,616.0		6,632.0		2/5/2009
CODELL, Original Hole			01	48	6,809.0		6,821.0		1/7/2009
Stimulation Intervals									
Zone				Start Date		Top (ftKB)		Btm (ftKB)	
NIORARA, Original Hole				2/5/2009		6,556.0		6,632.0	
CODELL, Original Hole				2/5/2009		6,809.0		6,821.0	
Other In Hole									
Run Date		Des			Make	OD (in)	Top (ftKB)	Btm (ftKB)	
3/8/2023		Cast Iron Bridge Plug w/ 2 SX Cement				3.9	6,472.0	6,498.0	
Logs									
Date		Type				Depth Top (MD) (ftKB)		Btm (ftKB)	
12/25/2008		Caliper/Comp. Density/Neutron/GR/SP/ML				2,490		6,965.0	
12/25/2008		DIL/GR/SP/Caliper				502		6,965.0	
1/7/2009		CBULCCL/GR				1,166		6,880.0	
Plug Back Total Depths									
Date		Type		Com				P&TD (ftKB)	
1/7/2009		FILL		TAG WITH WIRELINE AND LOGGING TOOLS.				6,891	
5/5/2009		PLUG REMNANTS		96.14' OF RAT HOLE				6,917	