

OWN Resources Operating LLC, Stallings 12-6
125-08383

Inspection #706700417

3/15/2023

Routine Field Inspection



COLORADO

**Oil & Gas Conservation
Commission**

Department of Natural Resources



Own Resources Operating LLC
DAVIS 1-6
NESE 6-1N-46W
Rd. M & Rd 35, 1 3/4 Mi East, N into
Yuma County, CO
970-332-3585

Own Resources Operating LLC
BLACH 21-6
NENW Sec. 6 T1N R46W
2 1/4 Miles East of Rd. M & 35
1 Mile North & 1 Mile East into
Yuma County, CO
970-332-3585

Own Resources Operating LLC
STALLINGS 12-6
SWNW Sec. 6-T1N-R46W
2 1/4 Miles East of Rd. 35 & M
1 Mile North & 1/2 East into
Yuma County, CO
970-332-3585

Own Resources Operating LLC
STALLINGS No. 14-6
SW SW SEC. 6-1N-46W
1 3/4 MILE E OF ROAD 6
M & 35 & N INTO
YUMA COUNTY, CO
970-332-3585

Own Resources Operating LLC
STALLINGS 11-6
NWNW Sec. 6-T1N-R46W
2 1/4 Miles East of Rd. 35 & M
1 1/4 Mile North & East into
Yuma County, CO
970-332-3585

Own Resources Operating LLC
BLACH 22-6B
SENEW Sec. 6 T1N-R46W
Rd. M & 35, 2 Miles East, N into
Yuma County, CO
970-332-3585

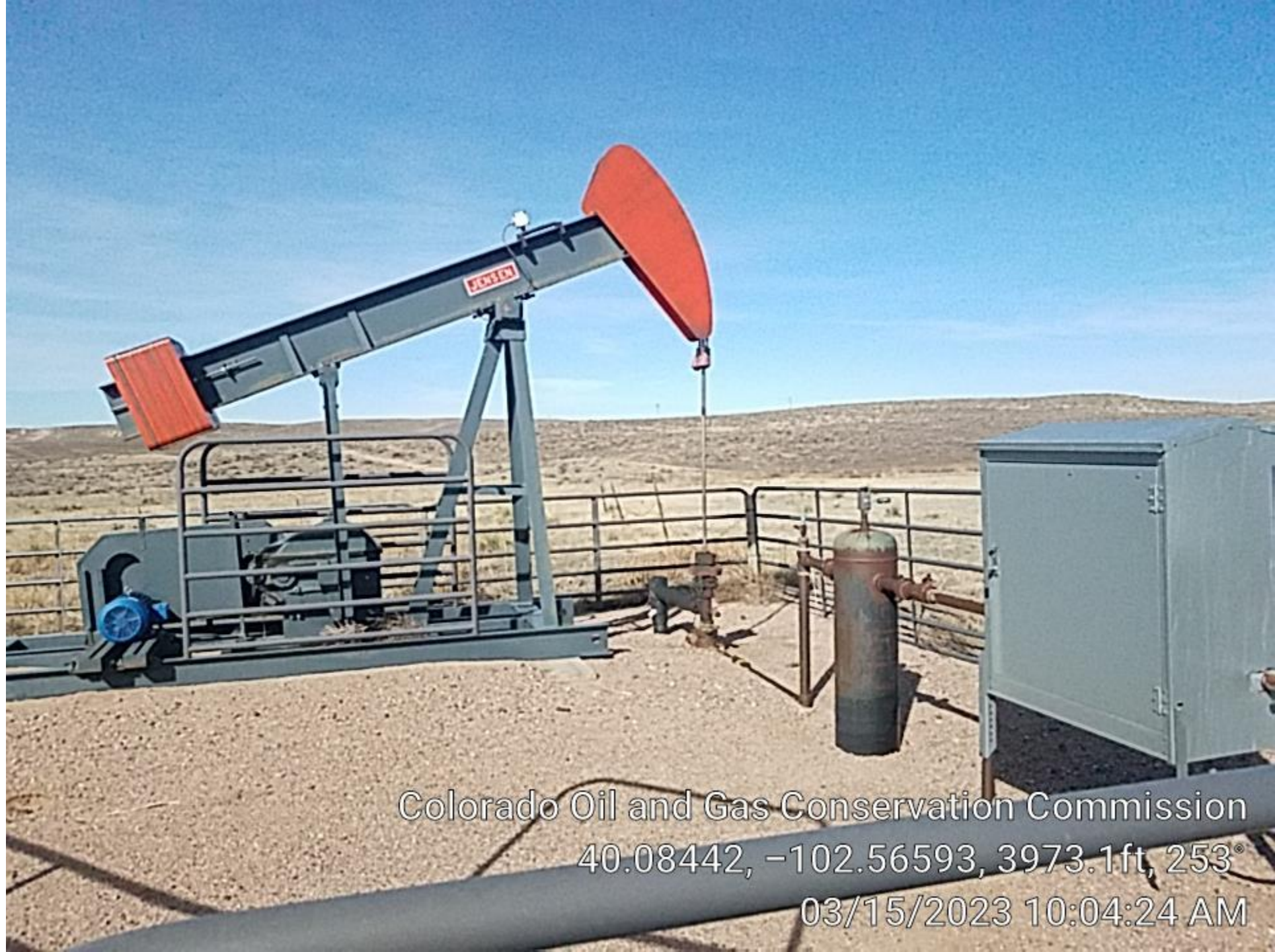
OWN RESOURCES OPERATING LLC
970-332-3585
STULP 41-1
NE/NE, SEC. 1-1N-47W
YUMA COUNTY, CO

Own Resources Operating LLC

STALLINGS 12-6

WNW Sec. 6-T1N-R46W
2 1/4 Miles East of Rd. 35 & M
1 Mile North & 1/2 East into
Yuma County, CO

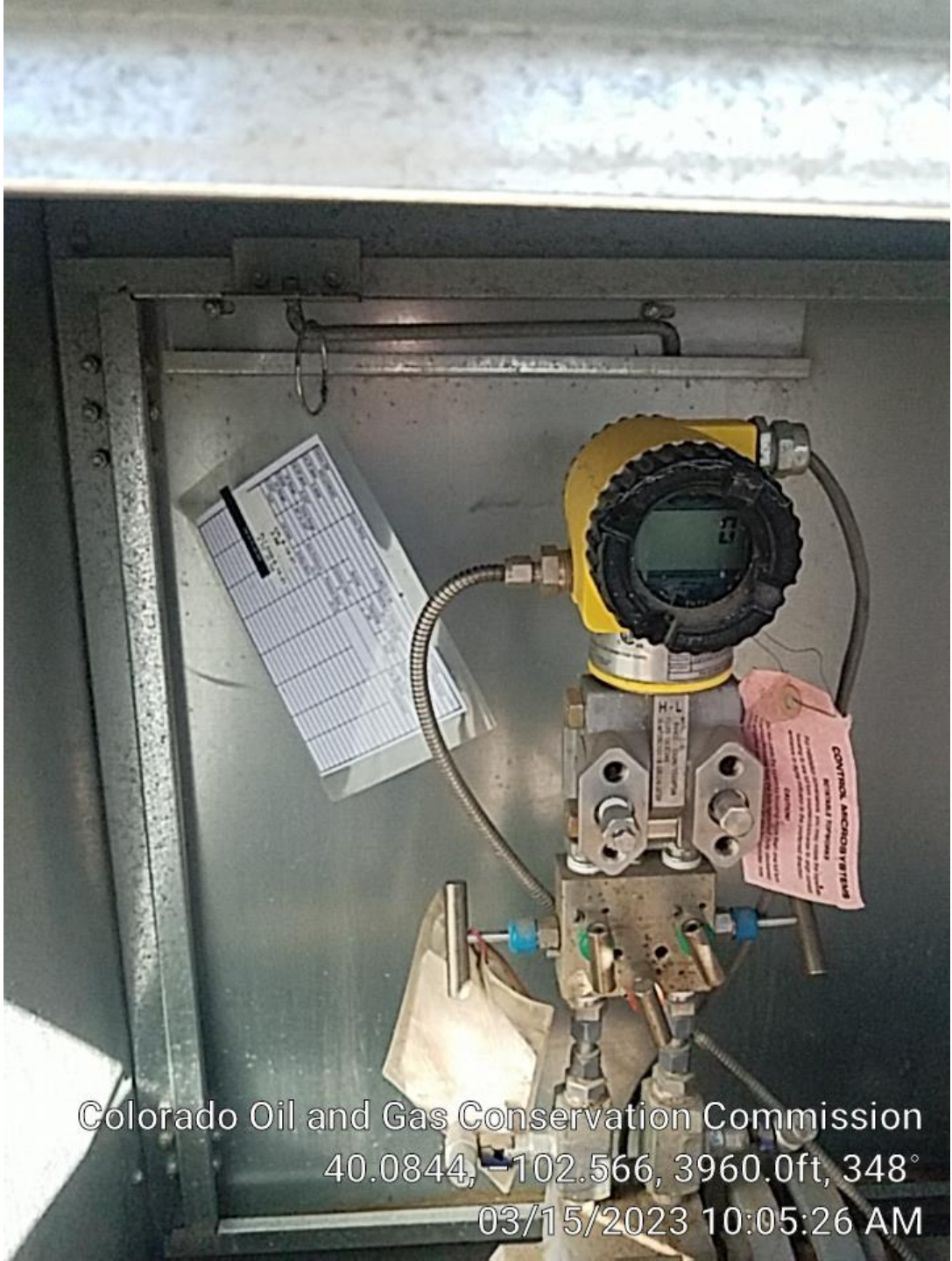
24-HOUR EMERGENCY CALL:
970-332-3585



Colorado Oil and Gas Conservation Commission
40.08442, -102.56593, 3973.1ft, 253°
03/15/2023 10:04:24 AM



Colorado Oil and Gas Conservation Commission
40.08444, -102.56604, 3956.7ft, 265°
03/15/2023 10:05:09 AM



Colorado Oil and Gas Conservation Commission
40.0844, -102.566, 3960.0ft, 348°
03/15/2023 10:05:26 AM

Station ID#		0912508183		Lease Name		STALLINGS 1206		Federal or State ID#		09-125-08183		Range		46W		Differential	
Cal SP Span		0-400#		Section		6		Township		1N		Temperature		PSIG or PSI		Inches in H ₂ O	
Cal DP Span		0-250"		Contract Hour		0		Pressure Bsc		14.73		170 Locality		Comments			
SP Range		0-800#		Residue		12.7		Alice Bore				Temperature		In F or C			
DP Range		0-250"		Temp Range		-20 to 150 F						Temperature		In F or C			
Tech				CAL#		6		21		5.11B							

PLT CHG 6-14-21
5 TO 25 NB



Fenced off,
reclaimed
area north
of well.

Colorado Oil and Gas Conservation Commission
40.08439, -102.56602, 3973.1ft, 294°
03/15/2023 10:04:38 AM



Same
reclaimed
area.

Colorado Oil and Gas Conservation Commission
40.08439, -102.56602, 3973.1ft, 294°
03/15/2023 10:04:38 AM



Colorado Oil and Gas Conservation Commission
40.08443, -102.566, 3966.5ft, 297°
03/15/2023 10:05:40 AM



OWN RESOURCES OPERATING LLC



Produced
Water

214 bbl
Tank

24-HOUR EMERGENCY CALL:
970-332-3585

Colorado Oil and Gas Conservation Commission
40.08442, -102.56594, 3950.1ft, 59°
03/15/2023 10:06:17 AM

Own Resources Operating LLC

**ALL TRUCKS
MUST BE
GROUNDED**

Colorado Oil and Gas Conservation Commission

40-08445, -102-56593, 3960-0ft, 69°

03/15/2023 10:06:24 AM



Animal holes in berms.

Colorado Oil and Gas Conservation Commission
40.08445, -102.56593, 3960.0ft, 69°
03/15/2023 10:06:24 AM