



FORM F-106



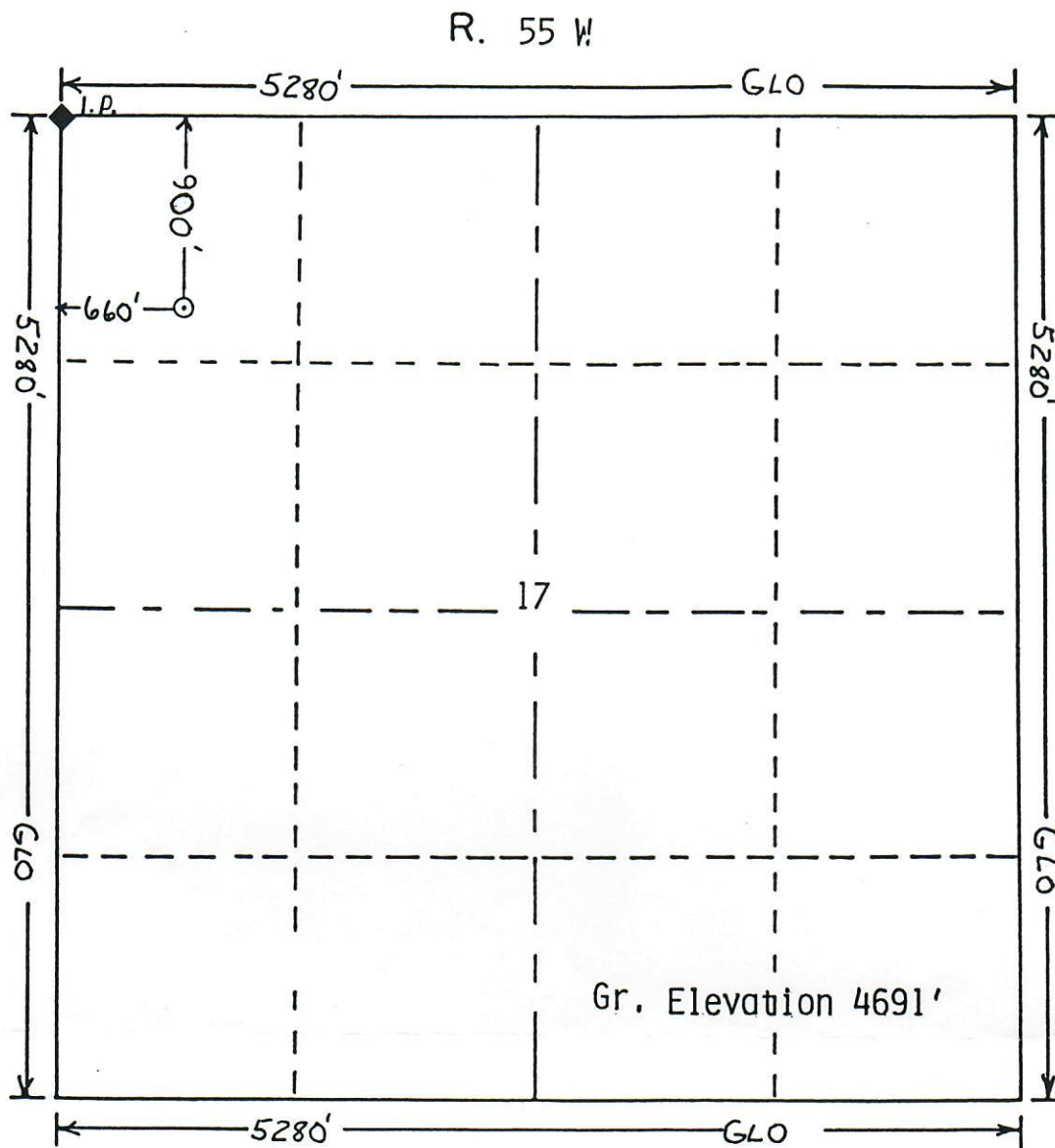
00325551

RECEIVED

JUN 14 1985

COLO. OIL &amp; GAS CONS. COMN.

N



T. 3 S

Scale... 1" = 1000'

Powers Elevation of Denver, Colorado  
has in accordance with a request from Mel Christensen  
for J.W. Nylund  
determined the location of 1-A Jolly  
to be 900fml, 660fwl Section 17 Township 3 S  
Range 55 W of the 6th Principal Meridian  
Washington County, Colorado

I hereby certify that this plat is an  
accurate representation of a correct  
survey showing the location of  
1-A Jolly

Date: 6-12-85

*Billy G. Holloway*  
Licensed Land Surveyor No. 2853  
State of Colorado

