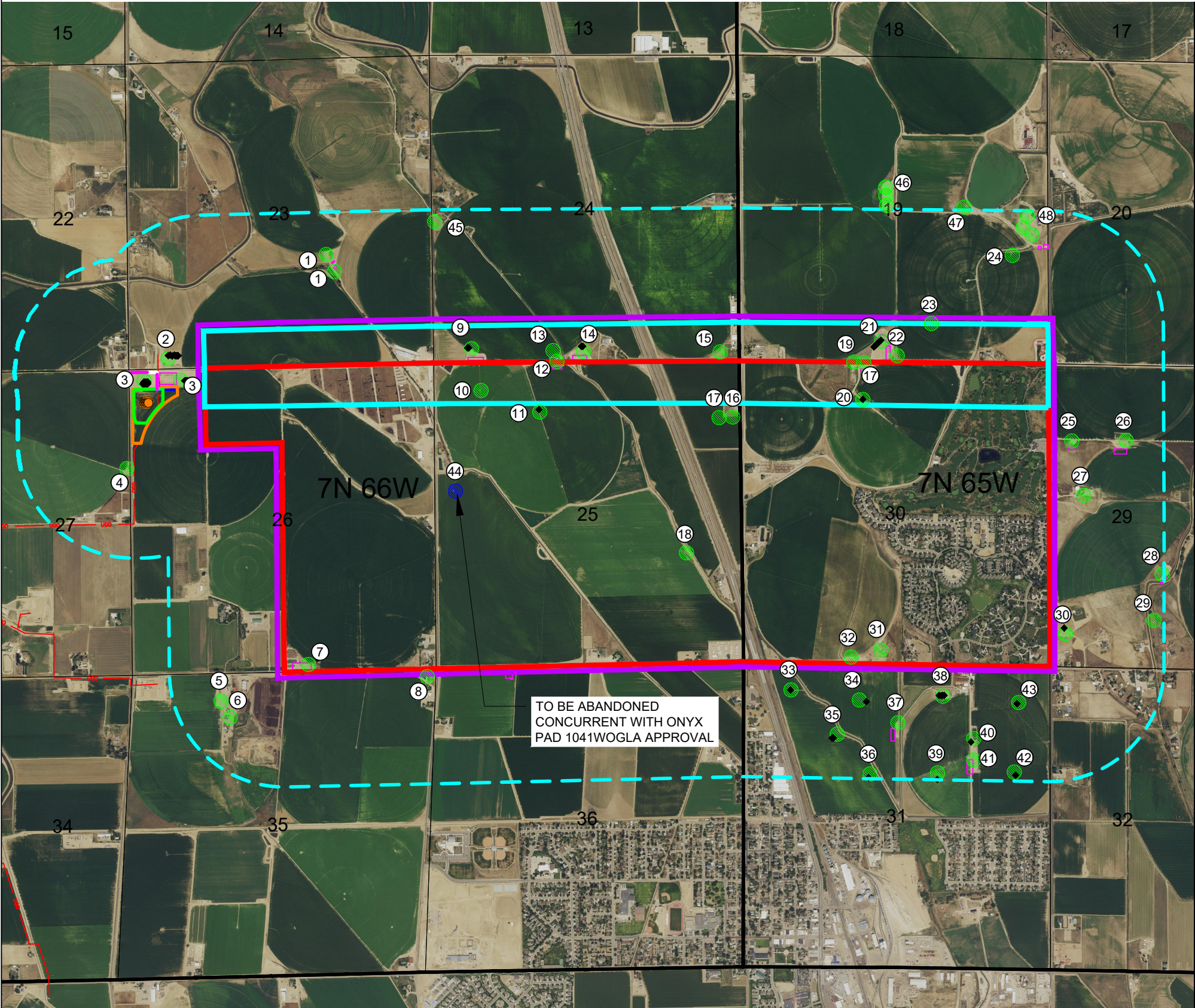
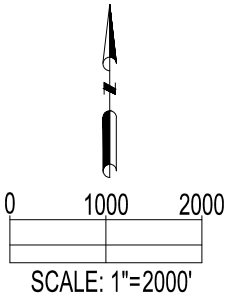


ONYX PAD
RELATED LOCATION & FLOWLINE MAP



Number	Location ID	Location Name	Location Status	Operator
1	306621	RUSCO-67N66W /23NWSE	AC	PDC ENERGY INC
2	428210	MTD /7N66W23 1-8	AC	PDC ENERGY INC
3	433335	Leffler /26-A Pad	AC	BAYSWATER EXPLORATION & PRODUCTION LLC
4	435308	Leffler 31,32,41,42-27; 27C /	AC	PDC ENERGY INC
5	471907	Wilson /1-35	AC	PDC ENERGY INC
6	305972	WILSON-67N66W /35NENW	AC	BAYSWATER EXPLORATION & PRODUCTION LLC
7	426699	Leffler /26Q-HZ Pad	AC	PDC ENERGY INC
8	461666	Noffsinger 35 7N66W /	AC	BAYSWATER EXPLORATION & PRODUCTION LLC
9	429524	Dalton /SW-24 Pad	AC	PDC ENERGY INC
10	306185	WAAG-67N66W /25NWNW	AC	BAYSWATER EXPLORATION & PRODUCTION LLC
11	310408	WAAG-67N66W /25NENW	AC	BAYSWATER EXPLORATION & PRODUCTION LLC
12	446444	WAAG T7N-R66W-S25 L01 /	AC	NOBLE ENERGY INC
13	447148	Dalton 14 /	AC	PDC ENERGY INC
14	430211	Dalton /24Q-HZ Pad	AC	PDC ENERGY INC
15	431138	Winter Tank Battery /24-33, 43, 44	AC	EXTRACTION OIL & GAS INC
16	431372	Winter Tank Battery /25-43	AC	EXTRACTION OIL & GAS INC
17	431106	Winter Tank Battery /25-41 & 42	AC	EXTRACTION OIL & GAS INC
18	472287	Clark /1-25	AC	PDC ENERGY INC
19	435379	Godby /30-B Facility	AC	BAYSWATER EXPLORATION & PRODUCTION LLC
20	407660	Godby /30-B Pad	AC	PDC ENERGY INC
21	439204	WAAG SOUTH SESW /PAD #1	AC	BAYSWATER EXPLORATION & PRODUCTION LLC
22	435085	Mapelli #1 /	AC	PDC ENERGY INC
23	319394	MAPELLI-67N65W /19SWSE	AC	PDC ENERGY INC
24	319533	MAPELLI-67N65W /19NESE	AC	PDC ENERGY INC
25	423676	CALVARY USX /EE29-04D	AC	NOBLE ENERGY INC
26	306408	Calvary USX EE /29-04D Tank	AC	NOBLE ENERGY INC
27	310330	2059 - USX EE-67N65W /29SWNW	AC	NOBLE ENERGY INC
28	305534	NORTHERN PROP-67N65W /29NESW	AC	PDC ENERGY INC
29	305535	NORTHERN PROP-67N65W /29SESW	AC	PDC ENERGY INC
30	436310	Hawkstone /29-30DD	AC	BAYSWATER EXPLORATION & PRODUCTION LLC
31	422949	Eaton Field /2	AC	SCHNEIDER ENERGY SERVICES INC
32	465923	Eaton Field /1	AC	SCHNEIDER ENERGY SERVICES INC
33	416121	GUSTAFSON /31-11	AC	BAYSWATER EXPLORATION & PRODUCTION LLC
34	309907	GUSTAFSON-67N65W /31NENW	AC	BAYSWATER EXPLORATION & PRODUCTION LLC
35	309905	GUSTAFSON /31-52	AC	BAYSWATER EXPLORATION & PRODUCTION LLC
36	309906	GUSTAFSON-67N65W /31SENW	AC	BAYSWATER EXPLORATION & PRODUCTION LLC
37	421557	Gustafson Off-Site Tank Battery /31-380 HN	AC	BAYSWATER EXPLORATION & PRODUCTION LLC
38	309903	Schmunk EF Pad /31-361HN	AC	GREAT WESTERN OPERATING COMPANY LLC
39	309904	SCHMUNK-67N65W /31SWNE	AC	GREAT WESTERN OPERATING COMPANY LLC
40	309901	SCHMUNK-67N65W /31WNNE	AC	GREAT WESTERN OPERATING COMPANY LLC
41	436119	Schmunk EF Offsite Tank Battery /31	AC	GREAT WESTERN OPERATING COMPANY LLC
42	309900	SCHMUNK-67N65W /31SENE	AC	GREAT WESTERN OPERATING COMPANY LLC
43	309902	SCHMUNK-67N65W /31NENE	AC	GREAT WESTERN OPERATING COMPANY LLC
44	WOGLA 19-0077	WB2 25-H PAD	N/A	BAYSWATER EXPLORATION & PRODUCTION LLC
45	446654	Dalton 13 /	AC	PDC ENERGY INC
46	439215	WAAG MIDDLE SENW /PAD #1	AC	BAYSWATER EXPLORATION & PRODUCTION LLC
47	422982	Calvary /19-32 Facility	AC	PDC ENERGY INC
48	457976	Calvary Farms /19-L Pad	AC	BAYSWATER EXPLORATION & PRODUCTION LLC



DATA SOURCE:
AERIAL IMAGERY: NAIP 2021
WELLS/APPROVED LOCATIONS: COGCC

PUBLICLY AVAILABLE DATA SOURCES HAVE NOT
BEEN INDEPENDENTLY VERIFIED BY ASCENT.

DISCLAIMER:
THIS PLOT DOES NOT REPRESENT A MONUMENTED LAND SURVEY AND SHOULD NOT BE RELIED UPON TO DETERMINE BOUNDARY LINES.
PROPERTY OWNERSHIP OR OTHER PROPERTY INTERESTS, PARCEL LINES, IF DEPICTED HAVE NOT BEEN FIELD VERIFIED AND MAY BE BASED
UPON PUBLICLY AVAILABLE DATA THAT ALSO HAS NOT BEEN INDEPENDENTLY VERIFIED.



FIELD
DATE:
05-19-22

DRAWN BY:
HJL

DRAWING
DATE:
02-02-23

CHECKED BY:
CSG

SITE NAME:
ONYX PAD

SURFACE LOCATION:
NW 1/4 NW 1/4 SEC. 26, T7N, R66W, 6TH P.M.
WELD COUNTY, COLORADO

LEGEND:

● = PROPOSED WELL
◆ = EXISTING WELL

--- = 2000' RADIUS FROM OGDP
--- = EXISTING FACILITY
--- = SECTION LINE
--- = TOWNSHIP LINE

--- = OGDP BOUNDARY
--- = DSU BOUNDARY
--- = WSU BOUNDARY

● = PERMITTED COGCC LOCATION
● = WORKING PAD SURFACE
● = OIL & GAS LOCATION
● = PERMITTED WOGLA LOCATION

--- = PROPOSED ACCESS ROAD
--- = EXISTING UNDERGROUND OIL LINE
--- = PROPOSED OFFSITE FLOWLINE CORRIDOR

PREPARED FOR:

