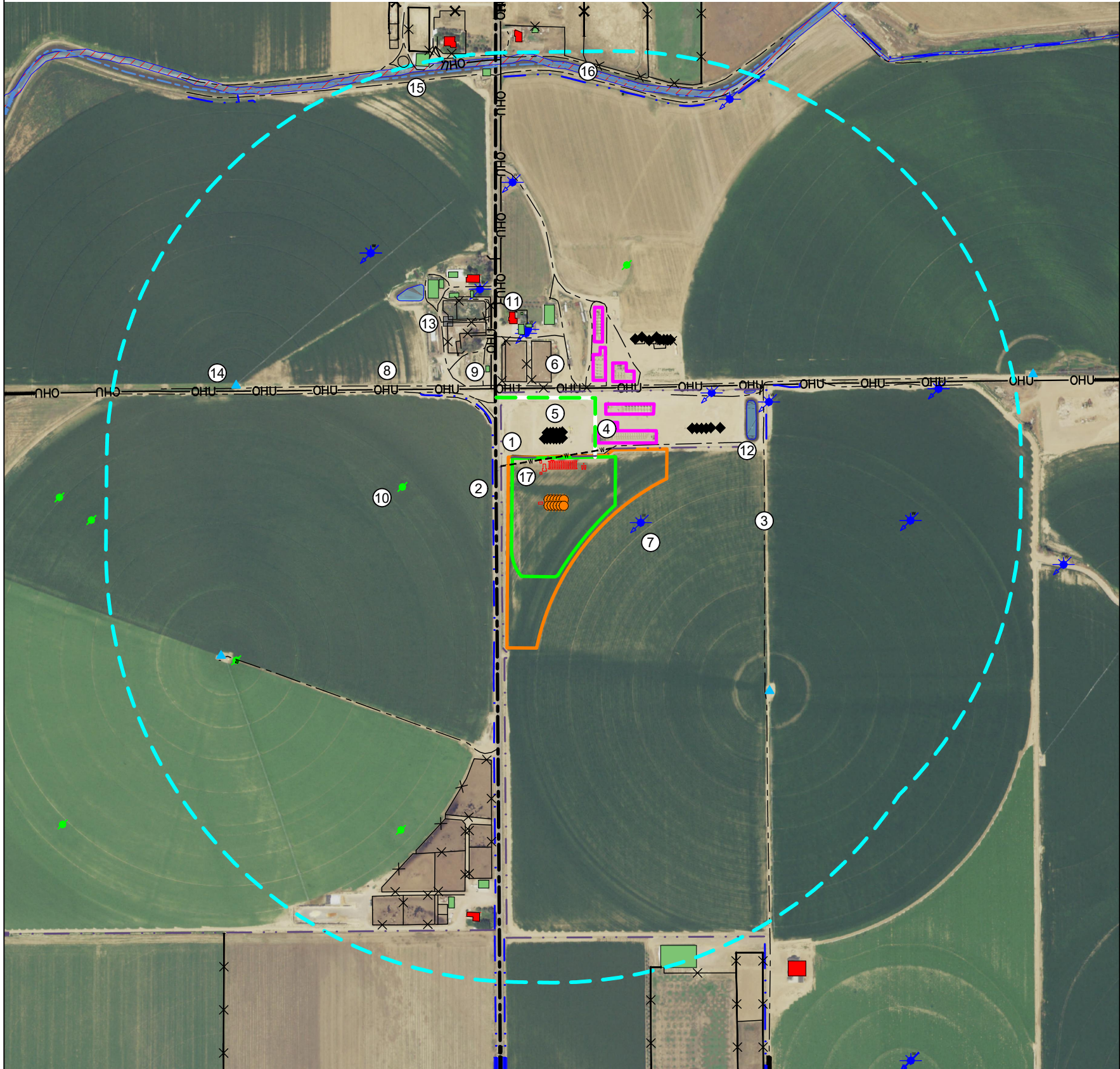
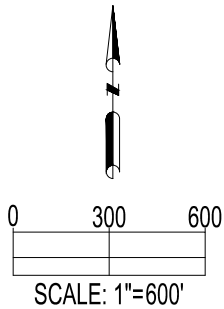


ONYX PAD
LOCATION DRAWING



IMPROVEMENTS: (AS MEASURED FROM THE PROPOSED WORKING PAD SURFACE)	
1. DITCH:	±2' N, ±50' W, ±89' W, ±325' N, ±409' S, ±1748' S, ±1778' S
2. WELD COUNTY ROAD 33:	±63' W
3. PRIVATE ROAD:	±9' N, ±206' N, ±208' N, ±286' NW, ±351' N, ±352' N, ±369' NW, ±385' NW, ±386' NE, ±386' S, ±424' NW, ±534' NW, ±592' N, ±732' W, ±857' S, ±1061' NE, ±1194' SE, ±1530' SW, ±1848' N, ±1888' N, ±1964' NW
4. EXISTING FACILITY:	±84' N, ±213' N, ±395' N, ±371' N, ±567' N, ±710' S
5. EXISTING OIL & GAS WELL:	±93' N, ±94' N, ±94' N, ±94' N, ±94' N, ±95' N, ±97' N, ±123' N, ±123' N, ±124' N, ±124' N, ±124' N, ±126' N, ±403' NE, ±425' NE, ±447' NE, ±469' NE, ±491' NE, ±536' NE, ±589' N, ±598' NE, ±605' NE, ±617' NE, ±624' NE, ±625' NE, ±631' NE, ±638' NE
6. FENCE:	±108' SW, ±341' N, ±373' N, ±376' N, ±570' N, ±573' NW, ±590' NE, ±637' NW, ±661' N, ±701' NW, ±712' S, ±830' S, ±843' S, ±862' S, ±918' S, ±1237' S, ±1235' S, ±1442' SW, ±1595' S, ±1863' N, ±1981' S, ±1998' NW, ±2056' SE
7. WATER WELL:	±153' E, ±569' NE, ±615' N, ±634' N, ±803' NE, ±848' NW, ±1229' NW, ±1229' NW, ±1229' NW, ±1360' N, ±1458' E, ±1458' E, ±1850' NE
8. OVERHEAD UTILITY:	±339' N, ±358' NW, ±721' N, ±775' NE, ±985' N, ±1961' NW
9. BUILDING:	±441' NW, ±609' N, ±644' N, ±657' N, ±707' N, ±815' NW, ±836' NW, ±869' NW, ±904' NW, ±931' NW, ±1506' S, ±1614' S, ±1783' N, ±1889' S, ±1974' NW, ±1979' NE, ±1913' N
10. ABANDONED OIL & GAS WELL:	±541' W, ±947' N, ±1384' S, ±1450' SW
11. RESIDENTIAL BUILDING UNIT:	±663' N, ±882' NW, ±1670' S
12. POND:	±710' NE, ±899' NW, ±656' NE
13. GATE:	±745' NW
14. PIVOT POINT:	±1186' SE, ±1403' W, ±1520' SW
15. SEASONALLY FLOODED INTERMITTENT RIVERINE WETLAND:	±1807' N
16. EATON DITCH CANAL:	±1808' NE
17. UNDERGROUND WATERLINE (TO BE REMOVED):	+0'



DATA SOURCE:
AERIAL IMAGERY: ASCENT 04/2022, NAIP 2021
WATER WELLS: COLORADO DWR
NHD: USGS

PUBLICLY AVAILABLE DATA SOURCES HAVE NOT
BEEN INDEPENDENTLY VERIFIED BY ASCENT.

OIL & GAS SURFACE ACREAGE:

9.1 ACRES OIL & GAS LOCATION
5.5 ACRES WORKING PAD SURFACE
2.2 ACRES INTERIM RECLAIM

REFERENCE LOCATION

ONYX FEDERAL 1

LAT: 40.551861° N
LONG: 104.753350° W
ELEVATION: 4894'
550' FNL & 254' FWL
PDOP: 1.2
GPS OPERATOR: TONY PRANDINI

DISCLAIMER:
THIS PLOT DOES NOT REPRESENT A MONUMENTED LAND SURVEY AND SHOULD NOT BE RELIED UPON TO DETERMINE BOUNDARY LINES.
PROPERTY OWNERSHIP OR OTHER PROPERTY INTERESTS, PARCEL LINES, IF DEPICTED HAVE NOT BEEN FIELD VERIFIED AND MAY BE BASED
UPON PUBLICLY AVAILABLE DATA THAT ALSO HAS NOT BEEN INDEPENDENTLY VERIFIED.

CURRENT SURFACE USE: IRRIGATED CROP
FUTURE SURFACE USE: IRRIGATED CROP



FIELD DATE:
05-19-22

DRAWING DATE:
11-14-22

DRAWN BY:
HJL

CHECKED BY:
CSG

SITE NAME:
ONYX PAD

SURFACE LOCATION:
NW 1/4 NW 1/4 SEC. 26, T7N, R66W, 6TH P.M.
WELD COUNTY, COLORADO

LEGEND:

- | | | | | |
|------------------------------|-----------------------------------|-------------------------------|-------------------------------|-----------------------------------|
| ▲ = PIVOT POINT | — — — — — = CONCRETE DITCH | — — — — — = PUBLIC ROAD | ■ = BUILDING | — — — — — = 2000' BUFFER FROM WPS |
| ● = PROPOSED WELL | — — — — — = DITCH | — — — — — = PRIVATE ROAD | ■ = RESIDENTIAL BUILDING UNIT | — — — — — = PROPOSED FACILITY |
| ◆ = EXISTING WELL | — — — — — = FENCE | — — — — — = EXISTING FACILITY | ■ = POND | — — — — — = OIL & GAS LOCATION |
| ● = PLUGGED & ABANDONED WELL | — — — — — = WATER WELL | — — — — — = WETLAND | ■ = GATE | — — — — — = WORKING PAD SURFACE |
| | — OHU — = OVERHEAD UTILITY | | — — — — — = CANAL | — — — — — = EXISTING ACCESS ROAD |
| | — — — — — = UNDERGROUND WATERLINE | | | |

