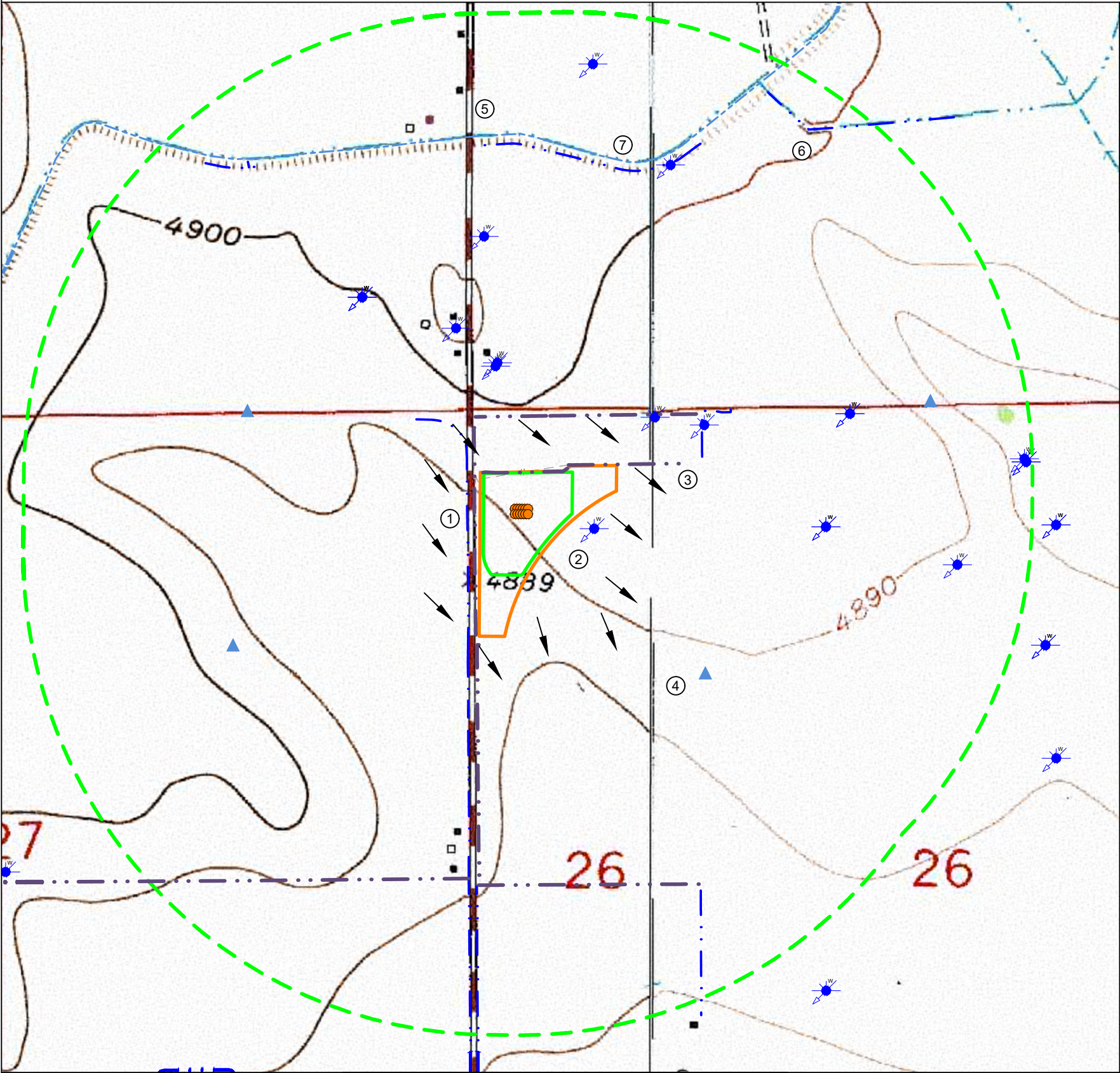


ONYX PAD  
HYDROLOGY MAP



| IMPROVEMENTS:<br>(AS MEASURED FROM THE PROPOSED WORKING PAD SURFACE) |                                                                                                                                                                                     |
|----------------------------------------------------------------------|-------------------------------------------------------------------------------------------------------------------------------------------------------------------------------------|
| 1. DITCH:                                                            | ±2' N, ±50' W, ±89' W, ±325' N, ±409' S, ±1748' S, ±1778' S, ±1759' N, ±2084' SE, ±2166' NW, ±2214' NW, ±2388' NE                                                                   |
| 2. WATER WELL:                                                       | ±153' E, ±569' NE, ±615' N, ±634' N, ±803' NE, ±848' NW, ±1229' NW, ±1229' NW, ±1229' NW, ±1360' N, ±1458' E, ±1458' E, ±1850' NE, ±2230' W, ±2344' S, ±2594' W, ±2604' W, ±2604' W |
| 3. POND:                                                             | ±710' NE, ±899' NW, ±656' NE                                                                                                                                                        |
| 4. PIVOT POINT:                                                      | ±1186' SE, ±1403' W, ±1520' SW, ±2094' NE                                                                                                                                           |
| 5. SEASONALLY FLOODED INTERMITTENT RIVERINE WETLAND:                 | ±1807' N                                                                                                                                                                            |
| 6. SEMIPERMANENTLY FLOODED RIVERINE WETLAND:                         | ±2365' NE                                                                                                                                                                           |
| 7. EATON DITCH CANAL:                                                | ±1808' NE                                                                                                                                                                           |

THERE ARE NO PUBLIC WATER SYSTEMS FACILITIES, PWS INTAKES <15 MILES UPSTREAM, OR RULE 411 BUFFER ZONES WITHIN THE 2,640' RADIUS

NEAREST WATER WELL INFO:  
(AS MEASURED FROM THE NEAREST EDGE OF THE PROPOSED WORKING PAD SURFACE)

| PERMIT # | RECEIPT # | STATIC WATER LEVEL | DISTANCE/DIRECTION |
|----------|-----------|--------------------|--------------------|
| 195-RDA  | 9058338   | 40'                | ±153' E            |

NEAREST SURFACE WATER FEATURE:  
(AS MEASURED FROM THE NEAREST EDGE OF THE PROPOSED WORKING PAD SURFACE)

|                       |       |
|-----------------------|-------|
| SURFACE WATER (DITCH) | ±2' N |
|-----------------------|-------|

DATA SOURCE:  
TOPO MAP: USGS  
WATER WELLS: COLORADO DWR  
NHD: USGS  
WETLANDS: USFWS  
FLOODPLAINS: FEMA  
PWS/RULE 411 BUFFERS: COGCC/CDPHE

PUBLICLY AVAILABLE DATA SOURCES HAVE NOT BEEN INDEPENDENTLY VERIFIED BY ASCENT.

DISCLAIMER:  
THIS PLOT DOES NOT REPRESENT A MONUMENTED LAND SURVEY AND SHOULD NOT BE RELIED UPON TO DETERMINE BOUNDARY LINES, PROPERTY OWNERSHIP OR OTHER PROPERTY INTERESTS. PARCEL LINES, IF DEPICTED HAVE NOT BEEN FIELD VERIFIED AND MAY BE BASED UPON PUBLICLY AVAILABLE DATA THAT ALSO HAS NOT BEEN INDEPENDENTLY VERIFIED.



|                         |                           |                                                                                          |
|-------------------------|---------------------------|------------------------------------------------------------------------------------------|
| FIELD DATE:<br>05-19-22 | DRAWING DATE:<br>12-06-22 | SITE NAME:<br>ONYX PAD                                                                   |
| DRAWN BY:<br>HJL        | CHECKED BY:<br>CSG        | SURFACE LOCATION:<br>NW 1/4 NW 1/4 SEC. 26, T7N, R66W, 6TH P.M.<br>WELD COUNTY, COLORADO |

|         |                  |                         |         |                  |
|---------|------------------|-------------------------|---------|------------------|
| LEGEND: | = PROPOSED WELL  | = 2640' BUFFER FROM WPS | = POND  | = CONCRETE DITCH |
|         | = WATER WELL     | = WORKING PAD SURFACE   | = CANAL | = DITCH          |
|         | = FLOW DIRECTION | = OIL & GAS LOCATION    |         |                  |
|         |                  | = WETLAND               |         |                  |

