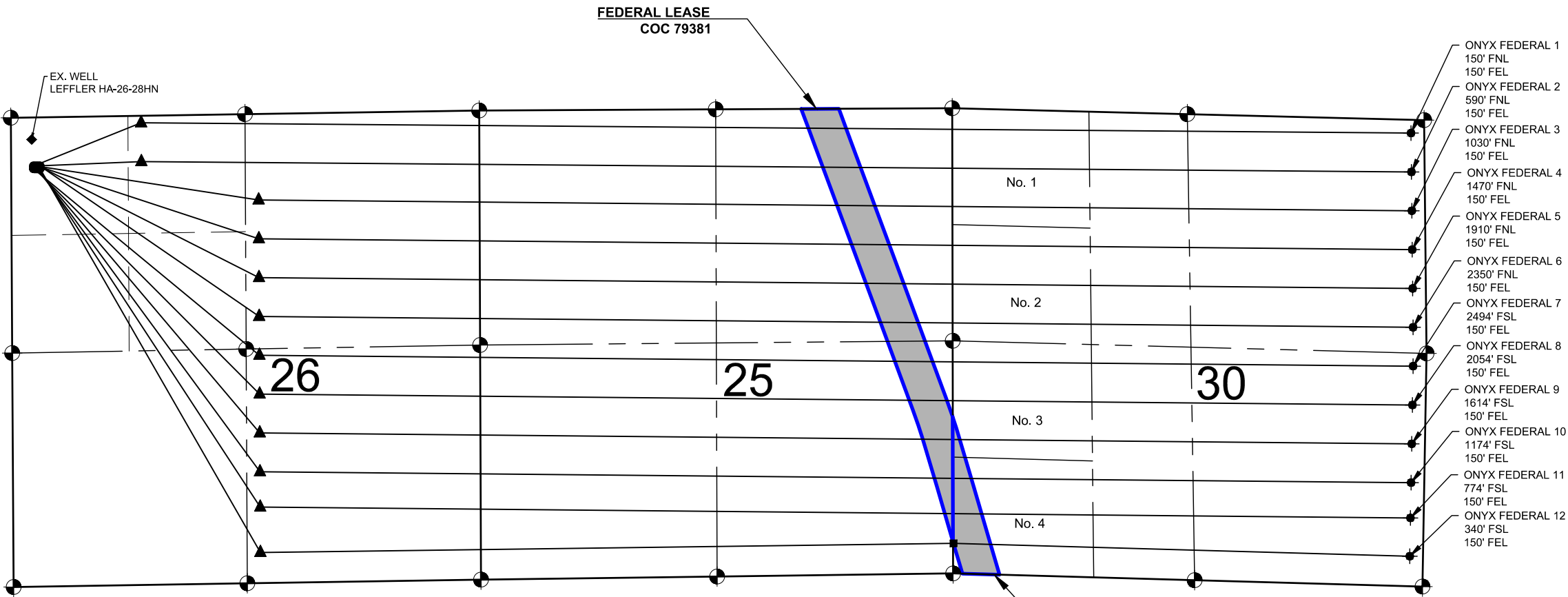


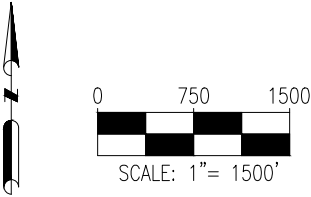
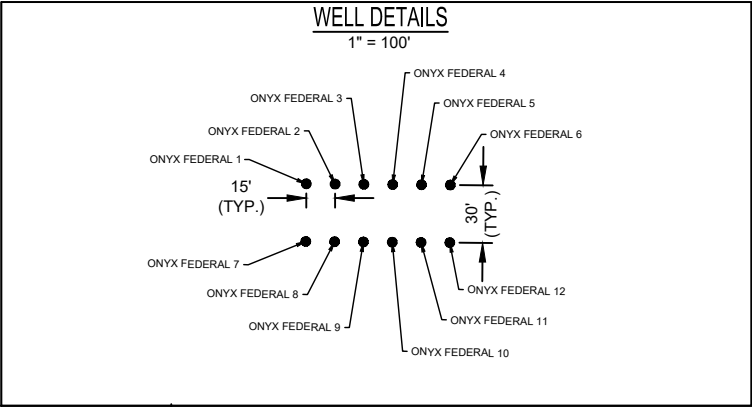
ONYX PAD
DIRECTIONAL WELL PLAT



- NOTES:
1. THIS FIELD SURVEY CONFORMS TO THE MINIMUM STANDARDS SET BY THE COGCC, RULE NO. 215
 2. ALL DISTANCES AND BEARINGS SHOWN HEREON ARE GROUND VALUES AS GPS MEASURED IN THE FIELD, WITH TIES TO WELLS MEASURED PERPENDICULAR TO LINES SHOWN HEREON. THIS LOW DISTORTION PROJECTION (LDP) IS BASED ON THE NORTH AMERICAN DATUM OF 1983, U.S. SURVEY FOOT WITH A LATITUDE ORIGIN OF 40.567905°N, A CENTRAL MERIDIAN LONGITUDE OF 104.773474°W, AND A SCALE FACTOR ON THE CENTRAL MERIDIAN OF 1.000235 (EXACT). THE LDP BASIS OF BEARINGS IS GEODETIC NORTH.
 3. FIELD VERIFICATION OF MONUMENTS COMPLETED WITHIN 1 YEAR OF SIGNATURE DATE, UNLESS OTHERWISE NOTED.

- NOTES:
- ONYX FEDERAL 1 TO BE AT 550' FNL & 254' FWL.
BOTTOM HOLE AT 150' FNL & 150' FEL, SEC. 30.
- ONYX FEDERAL 2 TO BE AT 551' FNL & 269' FWL.
BOTTOM HOLE AT 590' FNL & 150' FEL, SEC. 30.
- ONYX FEDERAL 3 TO BE AT 551' FNL & 284' FWL.
BOTTOM HOLE AT 1030' FNL & 150' FEL, SEC. 30.
- ONYX FEDERAL 4 TO BE AT 551' FNL & 299' FWL.
BOTTOM HOLE AT 1470' FNL & 150' FEL, SEC. 30.
- ONYX FEDERAL 5 TO BE AT 552' FNL & 314' FWL.
BOTTOM HOLE AT 1910' FNL & 150' FEL, SEC. 30.
- ONYX FEDERAL 6 TO BE AT 552' FNL & 329' FWL.
BOTTOM HOLE AT 2350' FNL & 150' FEL, SEC. 30.
- ONYX FEDERAL 7 TO BE AT 580' FNL & 254' FWL.
BOTTOM HOLE AT 2494' FSL & 150' FEL, SEC. 30.
- ONYX FEDERAL 8 TO BE AT 581' FNL & 269' FWL.
BOTTOM HOLE AT 2054' FSL & 150' FEL, SEC. 30.
- ONYX FEDERAL 9 TO BE AT 581' FNL & 284' FWL.
BOTTOM HOLE AT 1614' FSL & 150' FEL, SEC. 30.
- ONYX FEDERAL 10 TO BE AT 581' FNL & 299' FWL.
BOTTOM HOLE AT 1174' FSL & 150' FEL, SEC. 30.
- ONYX FEDERAL 11 TO BE AT 582' FNL & 314' FWL.
BOTTOM HOLE AT 774' FSL & 150' FEL, SEC. 30.
- ONYX FEDERAL 12 TO BE AT 582' FNL & 329' FWL.
BOTTOM HOLE AT 340' FSL & 150' FEL, SEC. 30.

EX. LEFFLER HA-26-28HN IS AT 251' FNL & 265' FWL.



- LEGEND
- = EXISTING MONUMENT
 - = CALCULATED POSITION
 - = PROPOSED WELL
 - ⬮ = BOTTOM HOLE
 - ▲ = LANDING POINT
 - ◆ = EXISTING WELL
 - ⬮ = VERTEX POINT
 - BHL = BOTTOM HOLE
 - = FEDERAL LEASE