



**BAYSWATER**  
EXPLORATION & PRODUCTION, LLC

**RULE 304.E. SUBSTANTIALLY EQUIVALENT INFORMATION COVER SHEET**

**Onyx Pad Oil and Gas Development Plan, Docket #221200360**

**Onyx Pad: NWNW Section 26, Township 7 North, Range 66 West**

**Form 2A Doc #402971275**

**Weld County, Colorado**

The attached Site Safety and Emergency Action Plan is being submitted as a substantially equivalent document to the Emergency Response Plan required by COGCC Rule 424.a.

This document was developed for Weld County as part of the 1041WOGLA Application.

This document does not conform to COGCC rules or guidance in the following ways:

There are no Public Water System administrators applicable to be listed as a contact in Section 4.

---

This document should be accepted as substantially equivalent:

The Emergency Response Plan (submitted as pages 72-91 of the 1041 WOGLA Application) is being reviewed by both Eaton Pierce Fire Protection District and Weld County OEM. Eaton Fire Department is a combination department comprised of both full-time employees and volunteers. Bayswater participates in annual training coordination with response agencies.

# **SITE SAFETY AND EMERGENCY ACTION PLAN**

## **Bayswater Exploration and Production, LLC**



**BAYSWATER**  
EXPLORATION AND PRODUCTION, LLC

**District Office**

**Bayswater Exploration and Production, LLC**

**730 17th Street**

**Suite 500**

**Denver, Colorado 80202**

**Onyx Pad**

**NWNW Section 26, Township 7 North, Range 66 West**

**Address: TBD**

**WELD COUNTY, COLORADO**


**Proposed Spud Date: 2<sup>nd</sup> Quarter 2023**

## Table of Contents

SECTION 1 – APPROVAL SIGNATURES .....	1
SECTION 2 – SITE ADDRESS AND DIRECTIONS .....	2
a) Directions:.....	2
b) Ingress and egress information: .....	2
c) Physical Address and GPS coordinates .....	2
d) Emergency Evacuation/Muster Assembly point(s) .....	2
SECTION 3 – LIST OF EMERGENCY CONTACTS.....	3
a) Energy Company .....	3
b) Energy Company Community/Media Relations .....	3
c) First Responders (Fire, EMS, HazMat) .....	3
d) Local, State, and Federal Contacts.....	3
e) Medical Facilities ( <i>Nearest locations to site</i> ) .....	4
f) Spill Response Organization ( <i>Contracted</i> ) .....	4
g) Loss of Well Control.....	4
h) Railroad Emergency Response ( <i>if applicable</i> ).....	5
i) Mutual-Aid – .....	5
SECTION – 4 SITE SPECIFIC INFORMATION.....	6
a) Site Description.....	6
b) Nearby Schools, High Occupancy Buildings, Waterways.....	6
c) Site Safety Requirements and General Safety Information.....	6
d) Equipment List .....	7
e) Chemicals stored on-site (BBLs and Gallons).....	7
SECTION 5 – MAPS AND DRAWINGS .....	9
1000’ Buffer Map.....	9
Project Location Access Map and Muster Point.....	10
Haul Route Map.....	11
2500 Foot Buffer Area Map .....	12
SECTION 6 – SPILL RESPONSE AND CLEAN-UP .....	13
a) Spill Response .....	13
b) Spill Reporting.....	13
SECTION 7 – REPORTABLE QUANTITIES.....	15
<b>Reportable quantities</b> .....	15
a) <b>Reportable quantities</b> .....	15
b. <b>Reportable requirements</b> .....	15
SECTION 8 – EVACUATION INFORMATION.....	15
a. Evacuation Plan Procedures (public) .....	15
SECTION – 9 TRAINING AND EXERCISES .....	16
SECTION – 10 COORDINATION WITH FIRST RESPONDERS .....	16
SECTION – 11 Plan Review and Update Procedures.....	16

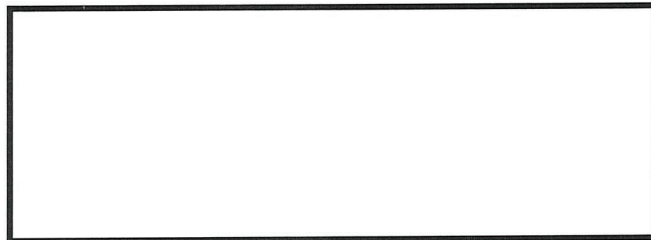
## **SECTION 1 – APPROVAL SIGNATURES**

**Instructions:** Company Representative to sign with concurrence review by local Fire District in alignment with COGCC FORM 2 A and Rule 602. J Emergency Response Plan, Guidance Plan Element 2.

Bayswater Exploration and Production, LLC			
Name	Signature	Title	Date
Lauren Walsh		Landman	10/31/22
Fire District			
Name	Signature	Title	Date

**Weld County Office of Emergency Management**

*Digitally Signed*



## **SECTION 2 – SITE ADDRESS AND DIRECTIONS**

**a) Directions:**

From the intersection of CR33 and CR76, head North on CR33 for 5252' to the proposed access to the East. Upon entering, bear East then South to the proposed pad.

**b) Ingress and egress information:**

Example information to include: All traffic into and out of Onyx Pad will check-in and check-out with security. All ingress and egress routes will be clearly identified and kept clear from parked/staged vehicles at all times.

**c) Physical Address and GPS coordinates**

- **API#** - Pending COGCC Permit Approval
- **Legal Description** - NWNW Section 26, Township 7 North, Range 66 West
- **Address** - \* Address Pending (*Weld OEM will provide physical address for 911 dispatching*)
- **Town, CO, Zip** - Ault, Colorado 80610-9627
- **Lat/Long:** Lat: 40.551861                      Long: - 104.753350

**d) Emergency Evacuation/Muster Assembly point(s)**

For incidents were remaining in a particular area could pose a hazard to personnel onsite, such as a fire or hazardous material release, evacuation may be required to ensure the safety of onsite personnel. In the event of an emergency, site personnel will initially be evacuated to pre-designated muster assembly points.

- The Muster assembly points are identified on the Project Location Access Map and Muster Point exhibit as well as the site-specific TRP.
- The Muster assembly points will be identified during all site safety briefings for visitors, employees, and contract personnel.
- **Sign-In Sheets:** During drilling and completion activities all employees and approved visitors to the Onyx Pad will be required to enter through a manned security checkpoint. Upon checking in, employees and visitors will be provided a detailed safety briefing of current operations, all safety precautions that must be adhered to, and the site emergency evacuation plan. In addition, all personnel who enter the location must sign-out upon their departure. Security or Supervisory personnel are required to account for all persons entering or leaving during active operations and in the event of an incident.
- Once drilling and completion activities are finalized, the site will transition to its production phase and no unauthorized personnel will be allowed on location without first contacting a company representative.

### **SECTION 3 – LIST OF EMERGENCY CONTACTS**

**a) Energy Company**

<b>Name</b>	<b>Office Phone</b>	<b>Emergency/Cell</b>
Bayswater Exploration and Production, LLC 730 17 <sup>th</sup> Street Suite 500 Denver, Colorado 80202	303-893-2503	720-515-2297
Field Office and Address 228 7th Street Eaton, Colorado 80615	303-893-2503	720-515-2297
Bayswater Exploration and Production, LLC EHS on-call emergency number	n/a	720-515-2297
EHS Supervisor – Kevin Kane	303-893-2503 x216	303-859-5988
EHS Safety – Kevin Kane	303-893-2503 x216	303-859-5988
EHS – Environmental – Brad Rogers	303-893-2503 x204	303-229-1128

**b) Energy Company Community/Media Relations**

<b>Name</b>	<b>Office Phone</b>	<b>Cell Phone</b>
Steve Struna	303-893-2503	n/a

**c) First Responders (Fire, EMS, HazMat)**

<b>Name</b>	<b>Emergency Number</b>	<b>Non-Emergency Number</b>
<b>*All emergency notifications require notification to 911 first</b>		
Ault Pierce Fire Protection District Station 1	911	970-834-2848
Ault Police Department	911	970-834-1336
Eaton Fire Protection District Station 1	911	970-454-2115
Eaton Police Department	911	970-454-3338
Weld County Sheriff	911	970-356-4015
Colorado State Highway Patrol	911	970-506-4999

**d) Local, State, and Federal Contacts**

Name	Emergency Number	Non-Emergency Number
Weld County Oil and Gas Energy Department	none	970-400-3580
Weld County Office of Emergency Management	911	970-304-6540
COGCC	none	303-894-2100
CDPHE	none	877-518-5608
Colorado Parks & Wildlife	none	303-291-7227
National Response Center	800-424-8802	none

**e) Medical Facilities** *(Nearest locations to site)*

Name	Office Phone
Northern Colorado Medical Center	970-352-4121
Medical Center of the Rockies	970-624-2500
Northern Colorado Medical Facility (Burn Unit)	970-810-4121

**f) Spill Response Organization** *(Contracted)*

Name	24/7 Emergency Number	Non-Emergency Number
Clean Harbors Environmental Services Inc.	303-289-8031	281-784-4700 (24-Hr.)
LT Environmental	303-433-9788	303-549-3262 (24-Hr.)
Resilient RM	281-535-2834	860-916-8133 (24-Hr.)

**g) Loss of Well Control**

Name	24/7 Emergency Number	Non-Emergency Number
Ault Pierce Fire Protection District Station 1	970-834-2848	Ault Pierce Fire Protection District Station 1
Eaton Fire Protection District Station 1	970-454-2115	Eaton Fire Protection District Station 1
Center for Toxicology and Environmental Health, LLC (CTEH)	866-869-2834	Center for Toxicology and Environmental Health, LLC (CTEH)
Wild Well Control, Inc	817-247-8175 (Main) 281-784-4700 (24-Hr.)	Wild Well Control, Inc

Northern Colorado Medical Facility (Burn Unit)	970-810-4121	Northern Colorado Medical Facility (Burn Unit)
Weld County Office of Emergency Management (Roy Rudisill)	970-304-6540	Weld County Office of Emergency Management (Roy Rudisill)

**h) Railroad Emergency Response *(if applicable)***

Name	24/7 Emergency Number
Union Pacific Railroad	888-877-7267

**i) Mutual-Aid –**

All mutual-aid coordination within Weld County will be in accordance with the current Weld County Fire Chiefs Association Mutual-Aid Agreement. In addition, due to the size of Weld County and the large number of Fire Departments that make up the Weld County Fire Chiefs Association's, Mutual-Aid may be a mixture of full-time, combination, and volunteer FD resources responding to an incident at the Onyx Pad.

## **SECTION – 4 SITE SPECIFIC INFORMATION**

### **a) Site Description**

The Onyx Pad is a Bayswater Exploration and Production, LLC oil and gas well pad that will have twelve (12) horizontal oil and gas wells along with zero (0) 500-barrel crude oil storage tanks and zero (0) 400 barrel produced water tanks that will produce to facilities located on the adjacent Leffler 26-A Pad.

As part of the Weld County 1041 WOGLA permit process, the following sections of County Code address site layout, site drawings, and identify any sensitive areas and discuss any mitigation measures needed.

- Sec. 21-5-312 – Comprehensive Development Plans (CDPs)
- Section 21-5-320 – Application requirements for 1041 WOGLA Permit

### **b) Nearby Schools, High Occupancy Buildings, Waterways**

- Schools - None within 2500' of location.
- High Occupancy Buildings - None within 2500' of location.
- Waterways - Eaton Ditch 1808' NE (upgradient of location)

### **c) Site Safety Requirements and General Safety Information**

The minimum personal protective equipment (PPE) to enter any Bayswater Exploration and Production, LLC production location includes hard hat, safety glasses, safety toe boots, fire resistant clothing (FRC), and a 4-gas monitor. All contractors and visitors are responsible for providing their employees with the appropriate training on and use of PPE while on Bayswater Exploration and Production, LLC locations. In addition, all contract personnel entering an Bayswater Exploration and Production, LLC location to perform work must understand and abide by Bayswater Exploration and Production, LLC's contractor expectations relating to environmental, health, and safety requirements.

The primary hazards that any person must be aware of while on an Bayswater Exploration and Production, LLC production location include, but are not limited to, the potential for release of hydrocarbon gases and/or liquids from production equipment/tanks, heavy truck and equipment traffic, loud noise, high pressures, and the potential for a flash fire. These hazards can vary depending on the work being performed.

- **SDS:** Depending on the operations taking place on location, chemicals stored on-site may vary. In accordance with 49 CFR 1910.1200, Safety Data Sheets (SDS) will be made available for site personnel performing work and for first responders in a centralized location onsite.

d) Equipment List

Item Description	Quantity
Horizontal oil and gas wells	12
Separators	12
Compressors	2
Injection pump	1
Heated gas lift enclosure	1
Gas lift injection manifold	1

e) Chemicals stored on-site (BBLs and Gallons)

<b>Drilling</b>	Diesel Fuel	300 BBLs x 1 Tank
	OBM make up fluid	400 BBLs x 2 Tank
	OBM	370 BBLs x 6 Tank
	Water	400 BBLs x 5 Tank
	OBM Active system	375 BBLs x 3 Tank
	Rig motor oils/lubricants/hydraulic oil	200 gal x 3 tank
	Cement Silo	750 sx x 3 silo
	Bulk Bar	21,000 lbs x 1 Tank
	Drilling Mud Dry Storage Conex	300 sx x 2 conexes
<b>Completion</b>	Diesel Fuel	400 bbls x 1 Tank
	Friction Reducer	160 BBLs x 13 Tank
	Biocide	20 BBLs x 2 Tank
	Grease	9 BBLS x 18 Tank
	Bleach	20 BBLs x 2 Tank
	Motor Oil	20 BBLs x 20 Tank
	Coolant	2 BBIS x 2 Tank
	DEF	83 BBLS x 16 Tank
<b>Drillout</b>	Diesel Fuel	12 BBLs x 1 Tank
	Flowback Tanks	3500 BBLs x 7 Tank

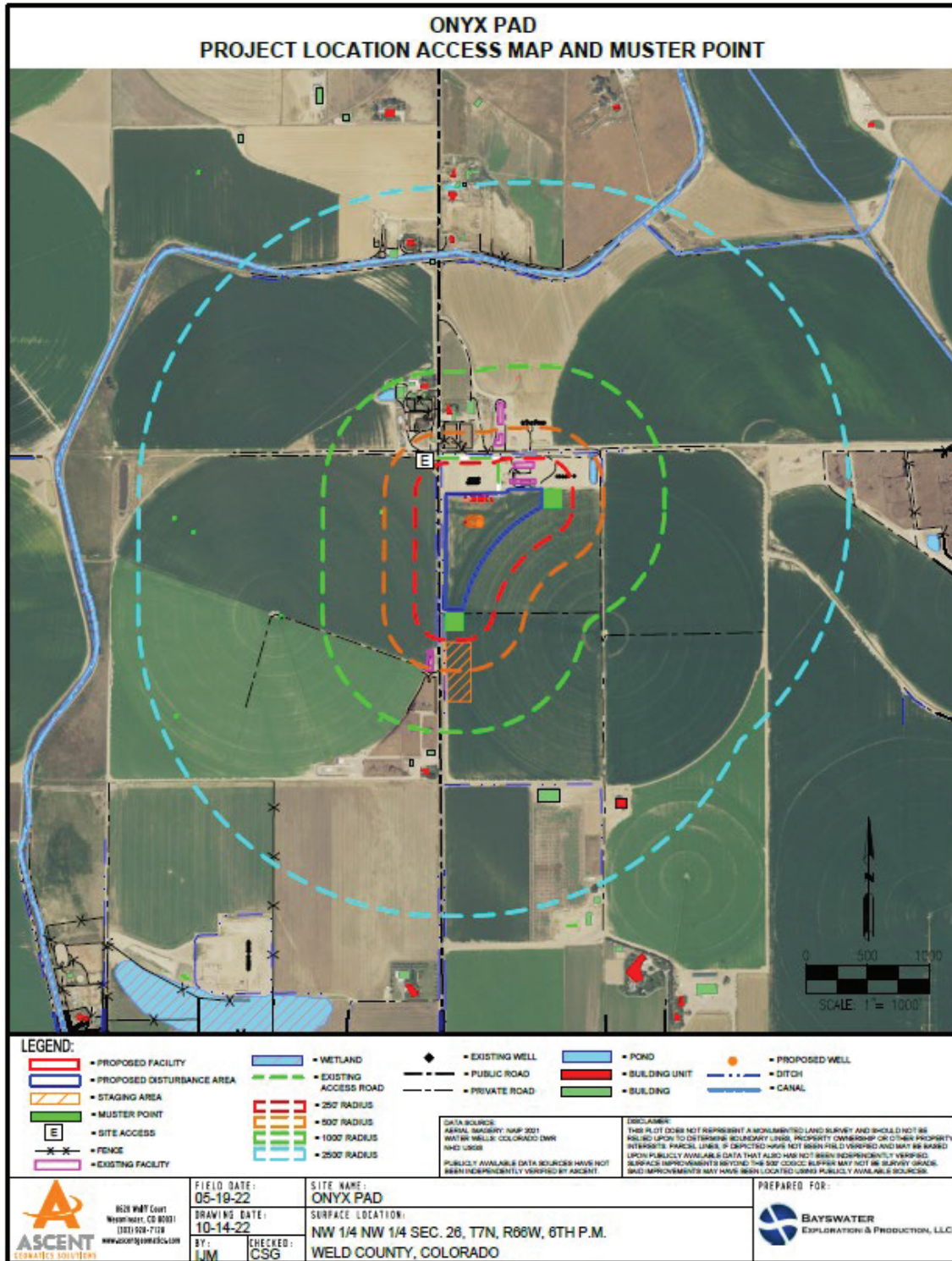
	Friction Reducer	47 BBLs x 4 Tank
<b>Flowback</b>	Produced Water	500 BBLs x 8 Tanks
<b>Production</b>	Produced Water	300 BBLs x 4 Tanks
	Oil	300 BBLs x 14 Tanks
	Methanol	8 BBLs x 2 Tanks
	Corrosion/Scale Inhibitor	8 BBLs x 2 Tanks

## SECTION 5 – MAPS AND DRAWINGS

### 1000' Buffer Map



## Project Location Access Map and Muster Point



# Haul Route Map



# 2500 Foot Buffer Area Map



## **SECTION 6 – SPILL RESPONSE AND CLEAN-UP**

### **a) Spill Response**

There are multiple types of hydrocarbons which can be released/spilled during oil and gas production and exploration. Most commonly released are unrefined products such as crude oil and produced water. Refined petroleum products such as diesel, gasoline, and motor oil spills are less common, but still equally important to mitigate. If a spill is found reportable, it will be mitigated in accordance with Colorado Oil and Gas Conservation Commission (COGCC) and Colorado Department of Public Health and Environment (CDPHE) guidelines.

Once a release has been identified, it will be immediately stopped and contained if possible and if safe to do so. When containing a spill; pig blankets, snakes, absorbent materials, or earthen berms will be constructed around the release to keep material from spreading. These materials will be provided by Bayswater and the contract company and kept on-site. Diligent efforts will be made to minimize contact with live vegetation or open water if release is outside of secondary containment structures.

In the event of a large incident requiring outside assistance, Bayswater Exploration and Production, LLC has contracted with Spill response contractor. Spill response contractor possesses a working knowledge of oil and gas operations, emergency response and Incident Command. Once notified Spill response contractor personal can be on location within 12 hours.

### **b) Spill Reporting**

The person reporting a spill may be required to supply the minimum spill assessment information to provide as a complete understanding of the incident as possible to local, state, or federal agencies if applicable. Some initial spill response actions and information that may be reported are presented below:

What determines a reportable spill and to whom does the report go?

- A spill/release will be reported to the COGCC if released material is property of Bayswater and meets the COGCC reporting thresholds (see below), an example would be crude oil released from a separator or produced water from a water tank.
- A spill/release will be reported to the Weld County LEPC if released material is property of Bayswater and meets the COGCC reporting thresholds (see below),
- A spill/release will be reported to the CDPHE if released material is in the custody of a third party for spills that meet CDPHE reporting thresholds, are of any size that impact or threaten to impact waters of the state, a residence or occupied structure, livestock or public byway. An example would be an oil hauler over filling a truck and spills product onto the ground next to a flowing irrigation ditch.

There are three release volume thresholds which determine if a hydrocarbon spill is reportable. These are:

1. If crude oil or produced water is released INSIDE secondary containment and volume is greater than 5 barrels.
2. If crude oil or produced water is OUTSIDE secondary containment and volume is greater than 1 barrel.
3. If more than 25 gallons of petroleum product such as diesel, gasoline or motor oil is spilled OUTSIDE of secondary containment.

Once a spill is determined reportable, there is a 24-hour deadline to make initial notification to the COGCC or CDPHE depending on product ownership. Spills/releases in the custody of Bayswater will be reported by a Company representative. Spills/releases in the custody of a third party will be reported by the responsible company's EHS Department to the appropriate agency and to Bayswater.

These regulatory guidelines will be strictly followed by Bayswater and any contractors operating under Bayswater guidance during all activities at the Onyx Pad. A spill/release will be reported to the CDPHE if released material is in the custody of a third party for spills meeting CDPHE reporting thresholds or are of any size that impact or threaten to impact waters of the state, a residence or occupied structure, livestock or public byway. An example would be an oil hauler over filling a truck and spills product onto the ground next to a flowing irrigation ditch.

## **SECTION 7 – REPORTABLE QUANTITIES**

### **Reportable quantities**

#### **a) Reportable quantities**

Mandated by Section 312 of the Emergency Planning and Community Right-To-Know Act (EPCRA) – also known as SARA Title III – the Tier II form captures information about the types, quantities, and locations of hazardous chemicals at a given facility. The form also lists contact information for the facility's designated emergency point-of-contact.

Any facility that is required to maintain MSDSs (or SDSs) under the Occupational Safety and Health Administration (OSHA) regulations for hazardous chemicals stored or used in the workplace.

Facilities with chemicals in quantities that equal or exceed the lists of lists thresholds must report.

- Propane, benzene, propene and methane are on the lists of lists and are known to be in crude oil. In addition, diesel is on the lists of lists and may be stored on sites during construction.

#### **b. Reportable requirements**

If your facility will meet the requirements under 40 CFR, you must submit your Tier II report to the state every year before March 1<sup>st</sup>.

These regulatory guidelines will be strictly followed by Bayswater and any contractors operating under Bayswater guidance during all activities at the Onyx Pad.

## **SECTION 8 – EVACUATION INFORMATION**

#### **a. Evacuation Plan Procedures (public)**

The procedure to be used in alerting nearby persons in the event of any occurrence that could pose a threat to life or property will be arranged and completed with public officials in detail.

In the event of an actual emergency, the following steps will be immediately taken:

1. The Bayswater representative will immediately notify proper authorities, including the sheriff's office, highway patrol, and any other public officials as described above and will enlist their assistance in warning residents and transients in the calculated radius of exposure.
2. Bayswater will coordinate with local authorities to warn residents' down-wind of the location and within radius of exposure from the well site. Additional evacuation zones may be necessary as the situation warrants.
3. The Bayswater representative will coordinate with appropriate emergency personnel to divert traffic in the vicinity away from the potentially dangerous area. No trespassing and warning signs will be posted at the entrance to the well site. The contract company will monitor essential and non-essential traffic on-site.
4. General:
  - a. The area included within the radius of exposure is considered to be the zone with the maximum potential hazard. When it is determined that conditions exist which create an additional area (beyond the initial zone of maximum potential hazard) vulnerable to possible hazard, public areas in the additional hazardous area will be evacuated.
  - b. In the event of a disaster, after the public areas have been evacuated and traffic stopped, it is expected that local civil authorities will have arrived and within a few hours will have assumed direction of and control of the public, including all public areas. Bayswater will cooperate with these authorities to the fullest extent and will exert every effort by careful advice to such authorities to prevent panic or rumors.

- c. Bayswater will dispatch appropriate personnel to the disaster site as soon as possible. The company's personnel will cooperate with and provide such information to civil authorities as they might require.

## **SECTION – 9 TRAINING AND EXERCISES**

The National Incident Management System (NIMS) guides all levels of government, nongovernmental organizations and the private sector to work together to prevent, protect against, mitigate, respond to and recover from incidents.

NIMS provides stakeholders across the whole community with the shared vocabulary, systems and processes to successfully deliver the capabilities described in the National Preparedness System. NIMS defines operational systems that guide how personnel work together during incidents.

Bayswater plays a vital role in the Incident Management System. Bayswater has a significant impact on local, regional, and national economic recovery, and is part of the whole community and essential to the function of the Community Lifelines.

To maximize Bayswater's impact and willingness to participate in incident operations, Bayswater should coordinate and integrate with first responders into a Unified Command (UC)—including planning, training, and preparedness exercises. In addition, it is also recommended all Bayswater employees who will respond to an incident have training in ICS 100, ICS 200, and ICS 700 at a minimum, for company and agency emergency response interoperability to manage a response.

**EXERCISES:** Exercises are an important component to test an organization's response readiness, training and familiarity with various emergency response scenarios, participation and engagement with local and or state agencies, and to develop lessons learned to improve emergency response capabilities. Per COGCC guidance number 16, a proposed schedule and type of exercises are provided below:

## **SECTION – 10 COORDINATION WITH FIRST RESPONDERS**

- a) Bayswater will communicate drill spud, completion operations and Production Turn-In-Line dates to the Weld County Office of Emergency Management for coordination/communication with local first responders. These start dates will be provided a minimum of 7 business days prior to commencement or change in oil and gas development operations.
- b) In the event of an emergency requiring First Responders, Unified Command will be established between the Bayswater appointed company man on location and First Responders present. Unified Command post will be established based on conditions present at time of incident.
- c) Bayswater's EHS representative and first responders identified in this Emergency Action Plan and Tactical Response Plan have reviewed both documents and have discussed coordination efforts in the event of an emergency situation requiring first responder assistance.
- d) **Industry Mutual-Aid:** Energy companies operating in Weld County are encouraged to be members of the Colorado Preparedness Response Network (CPRN), to support mutual-aid collaboration between industry and public emergency response organizations to achieve a coordinated and effective response to an all-hazards event.

## **SECTION – 11 Plan Review and Update Procedures**

- a) Multi-year plan review and update:  
Bayswater will update Describe this plan or incorporate this location into an area-wide plan and update that plan every five (5) years or after a change in personnel, operations or ownership.
- b) Post incident plan review and update:  
Bayswater will update this plan after a spill/release in order to evaluate and record the plan's effectiveness.