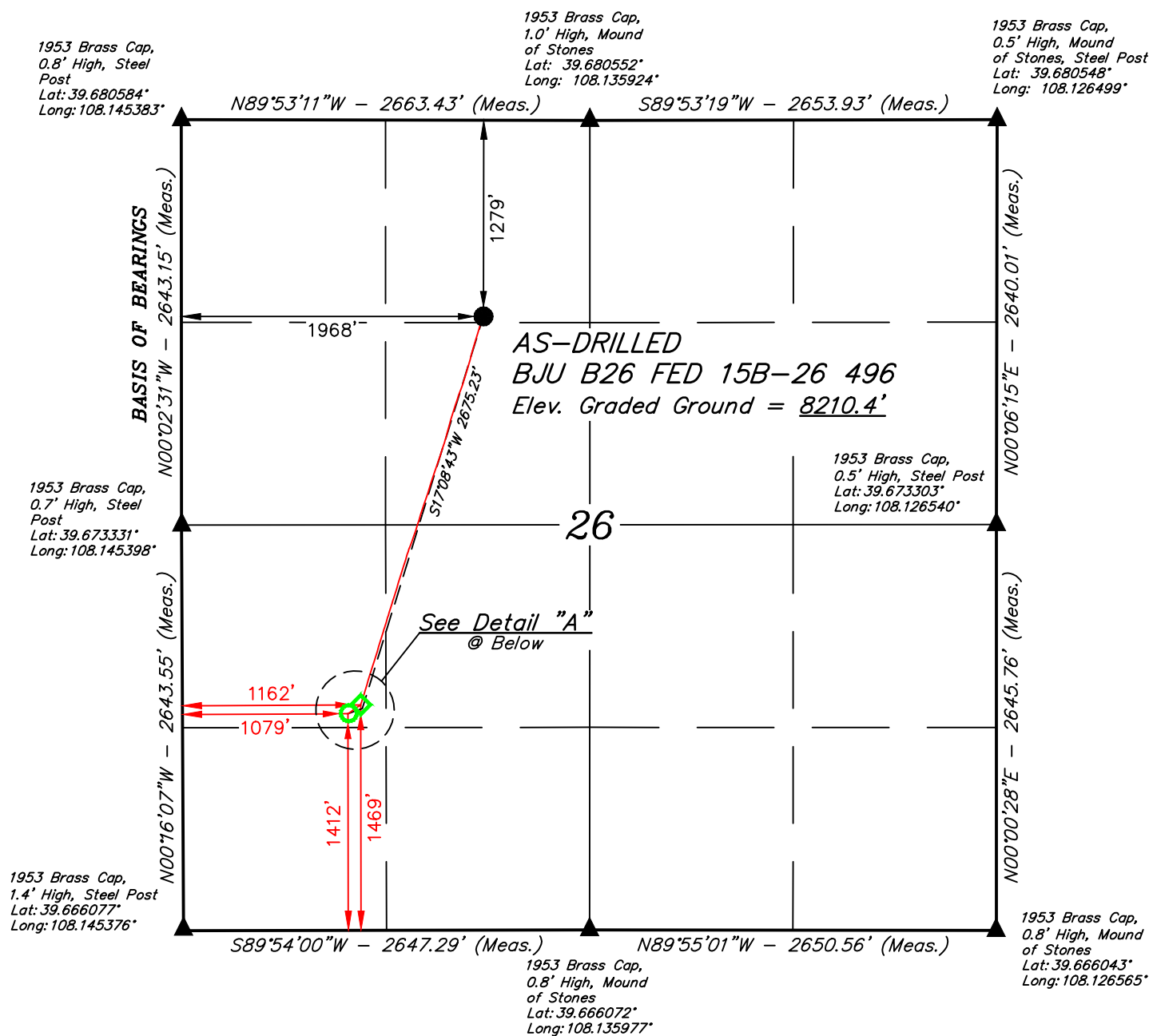


T4S, R96W, 6th P.M.

- NOTE:**

- Distances referenced on plat to section lines are perpendicular.
- Wellbore data provided by Caerus Oil & Gas LLC.



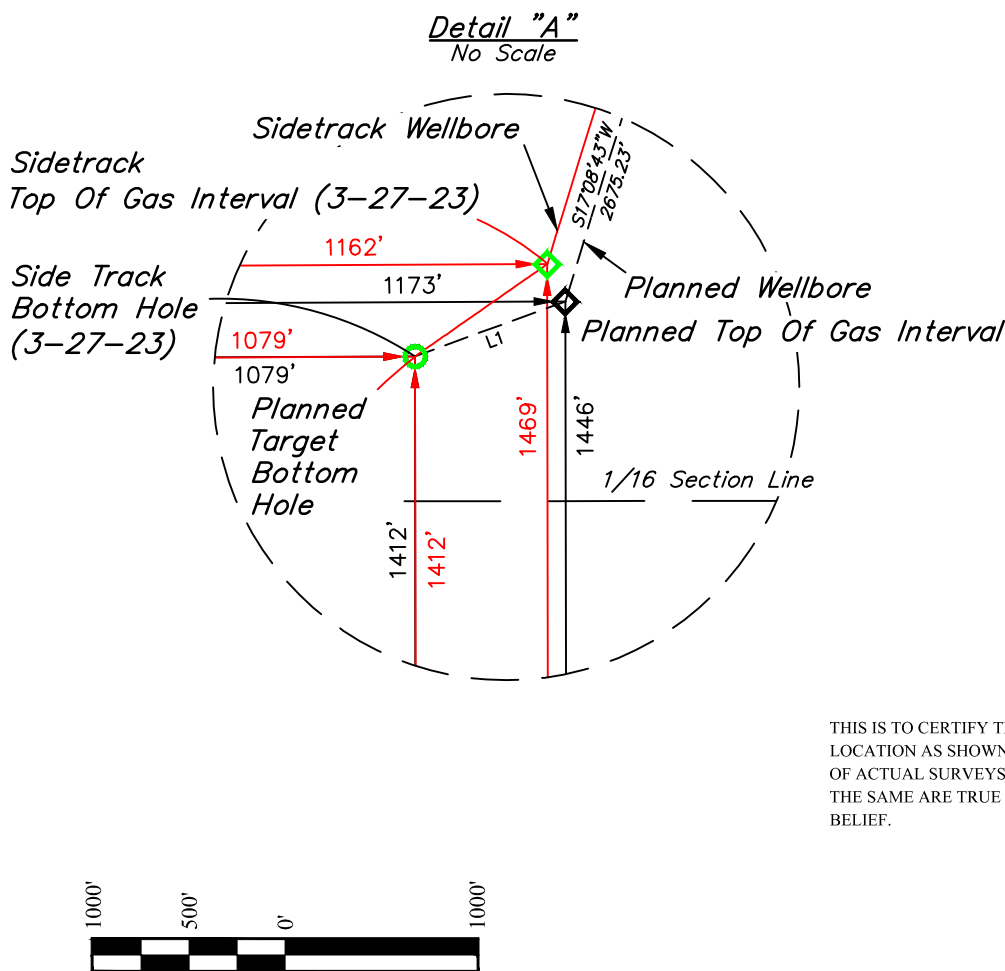
NAD 83 (AS-DRILLED WELLHEAD)
LATITUDE = 39°40'37.39" (39.677052°)
LONGITUDE = 108°08'18.24" (108.138400°)
NAD 27 (AS-DRILLED WELLHEAD)
LATITUDE = 39°40'37.47" (39.677076°)
LONGITUDE = 108°08'15.95" (108.137764°)
UTM NAD 27 (ZONE 12)
N: 14421310.28' E: 2445835.09'

NAD 83 (PLANNED TOP OF GAS INTERVAL)
LATITUDE = 39°40'12.15" (39.670042)
LONGITUDE = 108°08'28.40" (108.141223)
NAD 27 (PLANNED TOP OF GAS INTERVAL)
LATITUDE = 39°40'12.24" (39.670066)
LONGITUDE = 108°08'26.11" (108.140587)
UTM NAD 27 (ZONE 12)
N: 14418732.00 E: 2445122.15

NAD 83 (PLANNED BOTTOM HOLE)
LATITUDE = 39°40'11.81" (39.6699949)
LONGITUDE = 108°08'29.60" (108.141557)
NAD 27 (PLANNED BOTTOM HOLE)
LATITUDE = 39°40'11.90" (39.669973)
LONGITUDE = 108°08'27.32" (108.140921)
UTM NAD 27 (ZONE 12)
N: 14418694.95 E: 2445029.21

NAD 83 (SIDETRACK TOP OF GAS INTERVAL)
LATITUDE = 39°40'12.38" (39.670106)
LONGITUDE = 108°08'28.55" (108.141263)
NAD 27 (SIDETRACK TOP OF GAS INTERVAL)
LATITUDE = 39°40'12.47" (39.670131)
LONGITUDE = 108°08'26.26" (108.140627)
UTM NAD 27 (ZONE 12)
N: 14418755.00 E: 2445110.12

NAD 83 (SIDETRACK BOTTOM HOLE)
LATITUDE = 39°40'11.81" (39.669948)
LONGITUDE = 108°08'29.60" (108.141557)
NAD 27 (SIDETRACK BOTTOM HOLE)
LATITUDE = 39°40'11.90" (39.669973)
LONGITUDE = 108°08'27.31" (108.140921)
UTM NAD 27 (ZONE 12)
N: 14418694.89 E: 2445029.26



LINE TABLE		
LINE	DIRECTION	LENGTH
L1	S69°57'12"W	100.06'

CERTIFICAT

THIS IS TO CERTIFY THAT THE ABOVE PLAT WAS PREPARED AND
LOCATION AS SHOWN WAS STAKED ON THE GROUND FROM FIELD NOTES
OF ACTUAL SURVEYS MADE BY ME OR UNDER MY SUPERVISION AND THAT
THE SAME ARE TRUE AND CORRECT TO THE BEST OF MY KNOWLEDGE AND
BELIEF.

REGISTERED LAND SURVEYOR
REGISTRATION NO. 39130
STATE OF COLORADO
03-27-23

BEARINGS ARE BASED ON THE ASSUMPTION THAT THE WEST LINE OF THE NORTHWEST 1/4 OF SECTION 26 BEARS N00°02'31"W. MONUMENTS DESCRIBED HEREON.

BENCH MARK (H79) LOCATED IN THE NE 1/4 OF SECTION 35, T4S, R98W, 6th P.M., TAKEN FROM THE BULL FORK QUADRANGLE, COLORADO, 7.5 MINUTE SERIES. (TOPOGRAPHIC MAP) PUBLISHED BY THE UNITED STATES DEPARTMENT OF THE INTERIOR. GEOLOGICAL SURVEY. SAID ELEVATION IS MARKED AS BEING 8535 FEET.



UELS, LLC
Corporate Office * 85 South 200 East
Vernal, UT 84078 * (435) 789-1017



**AS-DRILLED BJU B26 FED 15B-26 496
NE 1/4 NW 1/4, SECTION 26, T4S, R96W, 6th P.M.
GARFIELD COUNTY, COLORADO**

SURVEYED BY	JOHN FLOYD	06-02-22	SCALE
DRAWN BY	T.L.L.	03-27-23	1" = 1000'

AS-DRILLED WELL LOCATION PLAT