

Plan #1

WELL DETAILS: KODAK SOUTH 11C

+N/-S	+E/-W	Northing	Easting	Latitude	Longitude
0.0	0.0	1408294.84	3177087.42	40° 27' 8.737 N	104° 51' 49.193 W



Project: WELD COUNTY
Site: Kodak South
Well: KODAK SOUTH 11C
Wellbore: OWB
Design: Plan #1
Lat: 40° 27' 8.737 N
Long: 104° 51' 49.193 W
GL: 4743.0
KB: KB 28' @ 4771.0usft



Azimuths to True North
Magnetic North: 10.01°

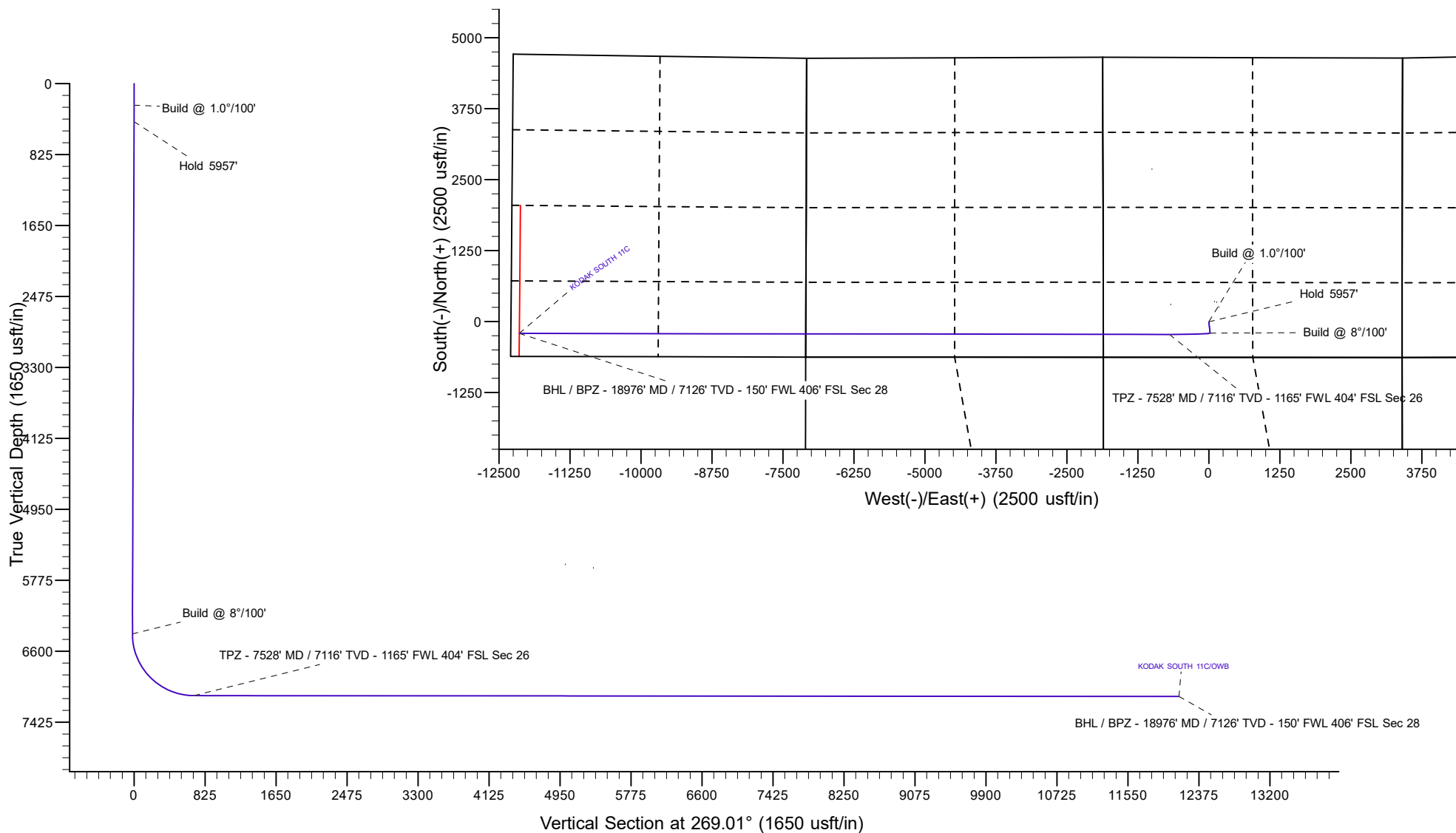
Magnetic Field
Strength: 53981.1nT
Dip Angle: 67.39°
Date: 12/31/2004
Model: IGRF2000

SECTION DETAILS

MD	Inc	Azi	TVD	+N/-S	+E/-W	Dleg	TFace	VSect	Annotation
0.0	0.00	0.00	0.0	0.0	0.0	0.00	0.00	0.0	
250.0	0.00	0.00	250.0	0.0	0.0	0.00	0.00	0.0	Build @ 1.0°/100'
443.3	1.93	173.46	443.3	-3.2	0.4	1.00	173.46	-0.3	Hold 5957'
6400.8	1.93	173.46	6397.4	-202.9	23.3	0.00	0.00	-19.8	Build @ 8°/100'
7528.0	89.95	270.08	7116.0	-226.0	-692.3	8.00	96.62	696.1	TPZ - 7528' MD / 7116' TVD - 1165' FWL 404' FSL Sec 26
18976.0	89.95	270.08	7126.0	-209.5	-12140.2	0.00	0.00	12142.1	BHL / BPZ - 18976' MD / 7126' TVD - 150' FWL 406' FSL Sec 28

Plan: Plan #1 (KODAK SOUTH 11C/OWB)

Created By: Mike Mataalii Date: 13:04, November 09 2022



PDC Energy Inc.
Anticollision Summary Report

Company:	PDC - PLANNING DB	Local Co-ordinate Reference:	Well KODAK SOUTH 11C
Project:	WELD COUNTY	TVD Reference:	KB 28' @ 4771.0usft
Reference Site:	Kodak South	MD Reference:	KB 28' @ 4771.0usft
Site Error:	0.0 usft	North Reference:	True
Reference Well:	KODAK SOUTH 11C	Survey Calculation Method:	Minimum Curvature
Well Error:	0.0 usft	Output errors are at	2.00 sigma
Reference Wellbore	OWB	Database:	EDM 5000.15 Single User Db
Reference Design:	Plan #1	Offset TVD Reference:	Offset Datum

Reference	Plan #1		
Filter type:	NO GLOBAL FILTER: Using user defined selection & filtering criteria		
Interpolation Method:	Stations	Error Model:	ISCWSA
Depth Range:	Unlimited	Scan Method:	Closest Approach 3D
Results Limited by:	Maximum center-center distance of 10,000.0 usft	Error Surface:	Pedal Curve
Warning Levels Evaluated at:	2.00 Sigma	Casing Method:	Not applied

Survey Tool Program	Date	11/9/2022		
From (usft)	To (usft)	Survey (Wellbore)	Tool Name	Description
0.0	18,976.0	Plan #1 (OWB)	MWD	OWSG MWD - Standard

Summary						
Site Name	Reference Measured Depth (usft)	Offset Measured Depth (usft)	Distance Between Centres (usft)	Distance Between Ellipses (usft)	Separation Factor	Warning
Offset Well - Wellbore - Design						
Kodak South						
KODAK SOUTH 01NA - OWB - Plan #1	250.0	250.0	150.0	147.3	54.738	CC, ES
KODAK SOUTH 01NA - OWB - Plan #1	18,976.0	18,850.3	2,078.6	1,431.6	3.213	SF
KODAK SOUTH 02N - OWB - Plan #1	250.0	250.0	135.2	132.4	49.310	CC, ES
KODAK SOUTH 02N - OWB - Plan #1	18,976.0	19,008.6	1,854.7	1,203.1	2.846	SF
KODAK SOUTH 03C - OWB - Plan #1	250.0	250.0	120.0	117.2	43.764	CC, ES
KODAK SOUTH 03C - OWB - Plan #1	18,976.0	19,081.3	1,644.8	992.4	2.521	SF
KODAK SOUTH 04N - OWB - Plan #1	250.0	250.0	105.1	102.3	38.328	CC, ES
KODAK SOUTH 04N - OWB - Plan #1	18,976.0	18,857.6	1,455.2	808.8	2.251	SF
KODAK SOUTH 05N - OWB - Plan #1	250.0	250.0	90.1	87.3	32.863	CC, ES
KODAK SOUTH 05N - OWB - Plan #1	18,976.0	18,918.5	1,239.5	589.7	1.907	Collision Risk Procedures Re
KODAK SOUTH 06NA - OWB - Plan #1	250.0	250.0	75.1	72.3	27.395	CC, ES
KODAK SOUTH 06NA - OWB - Plan #1	18,976.0	18,660.0	1,070.9	441.8	1.702	Collision Risk Procedures Re
KODAK SOUTH 07C - OWB - Plan #1	250.0	250.0	60.1	57.3	21.915	CC, ES
KODAK SOUTH 07C - OWB - Plan #1	18,976.0	18,989.6	822.4	170.6	1.262	Collision Avoidance Req., SF
KODAK SOUTH 08N - OWB - Plan #1	250.0	250.0	44.9	42.2	16.395	CC
KODAK SOUTH 08N - OWB - Plan #1	18,976.0	18,859.9	628.4	-12.8	0.980	No-Go Zone - Stop Drilling, E
KODAK SOUTH 09N - OWB - Plan #1	250.0	250.0	30.0	27.2	10.941	CC
KODAK SOUTH 09N - OWB - Plan #1	18,976.0	18,776.3	466.4	-115.6	0.801	No-Go Zone - Stop Drilling, E
KODAK SOUTH 10NA - OWB - Plan #1	250.0	250.0	15.0	12.3	5.472	CC
KODAK SOUTH 10NA - OWB - Plan #1	18,976.0	18,633.4	367.8	-24.9	0.937	No-Go Zone - Stop Drilling, E
KODAK SOUTH 12N - OWB - Plan #1	250.0	250.0	14.8	12.1	5.403	CC
KODAK SOUTH 12N - OWB - Plan #1	18,976.0	18,787.0	301.1	-172.4	0.636	No-Go Zone - Stop Drilling, E
KODAK SOUTH 13N - OWB - Plan #1	250.0	250.0	30.0	27.2	10.930	CC
KODAK SOUTH 13N - OWB - Plan #1	500.0	498.7	30.2	25.9	6.903	ES
KODAK SOUTH 13N - OWB - Plan #1	13,800.0	13,659.6	421.5	59.0	1.163	Collision Avoidance Req., SF
KODAK SOUTH 14N - OWB - Plan #1	443.8	442.3	45.0	41.0	11.213	CC
KODAK SOUTH 14N - OWB - Plan #1	500.0	498.1	45.3	40.9	10.344	ES
KODAK SOUTH 14N - OWB - Plan #1	13,800.0	13,643.2	648.9	289.2	1.804	Collision Risk Procedures Re
KODAK SOUTH 15C - OWB - Plan #1	250.0	250.0	104.3	101.6	38.064	CC, ES
KODAK SOUTH 15C - OWB - Plan #1	7,200.0	7,236.9	738.7	693.6	16.349	SF
KODAK SOUTH 16NA - OWB - Plan #1	250.0	250.0	101.0	98.3	36.864	CC, ES
KODAK SOUTH 16NA - OWB - Plan #1	6,800.0	7,264.2	512.2	469.0	11.856	SF
KODAK SOUTH 17N - OWB - Plan #1	250.0	250.0	99.9	97.1	36.431	CC, ES
KODAK SOUTH 17N - OWB - Plan #1	7,079.1	7,269.1	294.5	254.9	7.432	SF
KODAK SOUTH 18N - OWB - Plan #1	6,979.1	7,268.3	69.7	28.9	1.711	Collision Risk Procedures Re
KODAK SOUTH 19N - OWB - Plan #1	250.0	250.0	104.4	101.7	38.104	CC, ES
KODAK SOUTH 19N - OWB - Plan #1	7,108.5	7,591.2	167.6	119.4	3.474	SF

CC - Min centre to center distance or convergent point, SF - min separation factor, ES - min ellipse separation

PDC Energy Inc.
Anticollision Summary Report

Company:	PDC - PLANNING DB	Local Co-ordinate Reference:	Well KODAK SOUTH 11C
Project:	WELD COUNTY	TVD Reference:	KB 28' @ 4771.0usft
Reference Site:	Kodak South	MD Reference:	KB 28' @ 4771.0usft
Site Error:	0.0 usft	North Reference:	True
Reference Well:	KODAK SOUTH 11C	Survey Calculation Method:	Minimum Curvature
Well Error:	0.0 usft	Output errors are at	2.00 sigma
Reference Wellbore	OWB	Database:	EDM 5000.15 Single User Db
Reference Design:	Plan #1	Offset TVD Reference:	Offset Datum

Summary						
Site Name	Reference Measured Depth (usft)	Offset Measured Depth (usft)	Distance Between Centres (usft)	Distance Between Ellipses (usft)	Separation Factor	Warning
Offset Well - Wellbore - Design						
Kodak South						
KODAK SOUTH 20NA - OWB - Plan #1	250.0	250.0	109.3	106.6	39.889	CC, ES
KODAK SOUTH 20NA - OWB - Plan #1	6,800.0	7,597.9	424.8	372.3	8.088	SF
Kodak South FD 25-201HC - OWB - OWB	189.4	181.0	180.2	177.8	73.869	CC
Kodak South FD 25-201HC - OWB - OWB	300.0	291.4	180.5	177.3	55.988	ES
Kodak South FD 25-201HC - OWB - OWB	3,600.0	3,555.0	302.0	282.3	15.263	SF
Kodak South FD 25-240HN - OWB - OWB	136.0	127.6	155.7	153.9	89.784	CC
Kodak South FD 25-240HN - OWB - OWB	250.0	240.5	156.2	153.2	51.245	ES
Kodak South FD 25-240HN - OWB - OWB	3,900.0	3,875.4	275.1	255.0	13.726	SF
Kodak South FD 25-240HNX - OWB - OWB	100.0	91.4	168.0	166.8	142.594	CC
Kodak South FD 25-240HNX - OWB - OWB	300.0	291.7	168.5	165.2	51.777	ES
Kodak South FD 25-240HNX - OWB - OWB	3,500.0	3,468.6	266.1	247.4	14.201	SF
Kodak South FD 25-240HNX - ST01 - ST01	100.0	91.4	168.0	166.8	142.594	CC
Kodak South FD 25-240HNX - ST01 - ST01	300.0	291.7	168.5	165.2	51.777	ES
Kodak South FD 25-240HNX - ST01 - ST01	3,500.0	3,468.6	266.1	247.4	14.201	SF
Kodak South FD 25-241HC - OWB - OWB	149.9	141.5	134.2	132.3	70.278	CC
Kodak South FD 25-241HC - OWB - OWB	250.0	240.8	134.5	131.6	45.858	ES
Kodak South FD 25-241HC - OWB - OWB	4,500.0	4,476.3	272.5	249.7	11.930	SF
Kodak South FD 25-241HC - ST01 - ST01	149.9	141.5	134.2	132.3	70.278	CC
Kodak South FD 25-241HC - ST01 - ST01	250.0	240.8	134.5	131.6	45.858	ES
Kodak South FD 25-241HC - ST01 - ST01	4,500.0	4,476.3	272.5	249.7	11.930	SF
Kodak South FD 25-241HN - OWB - OWB	322.0	315.1	142.8	139.3	41.035	CC
Kodak South FD 25-241HN - OWB - OWB	400.0	393.1	143.2	139.1	35.082	ES
Kodak South FD 25-241HN - OWB - OWB	4,000.0	3,981.8	247.5	227.1	12.105	SF
Kodak South FD 25-280HN - OWB - OWB	100.0	91.3	116.7	115.5	98.998	CC
Kodak South FD 25-280HN - OWB - OWB	250.0	240.6	117.4	114.4	39.687	ES
Kodak South FD 25-280HN - OWB - OWB	4,600.0	4,577.4	244.8	222.6	11.024	SF
Kodak South FD 25-280HNX - OWB - OWB	342.9	335.9	123.6	119.9	33.908	CC
Kodak South FD 25-280HNX - OWB - OWB	400.0	393.0	123.8	119.7	30.286	ES
Kodak South FD 25-280HNX - OWB - OWB	4,100.0	4,084.6	224.6	204.0	10.898	SF
Kodak South FD 25-280HNX - ST01 - ST01	342.9	335.9	123.6	119.9	33.908	CC
Kodak South FD 25-280HNX - ST01 - ST01	400.0	393.0	123.8	119.7	30.286	ES
Kodak South FD 25-280HNX - ST01 - ST01	4,100.0	4,084.6	224.6	204.0	10.898	SF
Kodak South FD 25-320HN - OWB - OWB	398.9	392.0	107.7	103.6	26.426	CC
Kodak South FD 25-320HN - OWB - OWB	443.3	436.4	107.8	103.5	25.041	ES
Kodak South FD 25-320HN - OWB - OWB	4,700.0	4,687.0	213.8	190.7	9.245	SF

PDC Energy Inc.
Anticollision Summary Report

Company:	PDC - PLANNING DB	Local Co-ordinate Reference:	Well KODAK SOUTH 11C
Project:	WELD COUNTY	TVD Reference:	KB 28' @ 4771.0usft
Reference Site:	Kodak South	MD Reference:	KB 28' @ 4771.0usft
Site Error:	0.0 usft	North Reference:	True
Reference Well:	KODAK SOUTH 11C	Survey Calculation Method:	Minimum Curvature
Well Error:	0.0 usft	Output errors are at	2.00 sigma
Reference Wellbore	OWB	Database:	EDM 5000.15 Single User Db
Reference Design:	Plan #1	Offset TVD Reference:	Offset Datum

Summary						
Site Name	Reference Measured Depth (usft)	Offset Measured Depth (usft)	Distance Between Centres (usft)	Distance Between Ellipses (usft)	Separation Factor	Warning
Offset Well - Wellbore - Design						
Kodak South Offsets						
MERLIN #29E-10-4N - OWB - OWB	18,976.0	11,990.0	1,816.7	1,359.9	3.977	CC, ES, SF
MERLIN #29E-10-6N - OWB - OWB	18,976.0	12,080.0	1,155.0	702.4	2.552	CC, ES, SF
Ag State #30C-31-L - OWB - OWB	6,459.8	18,568.0	8,763.0	8,704.8	150.553	CC, ES
Ag State #30C-31-L - OWB - OWB	6,900.0	18,568.0	8,903.3	8,843.0	147.708	SF
Ag State #30N-31B-L - OWB - OWB	6,445.0	18,390.0	8,771.8	8,719.3	167.048	CC, ES
Ag State #30N-31B-L - OWB - OWB	6,950.0	18,390.0	8,954.5	8,899.2	161.940	SF
Ag State #31C-31-L - OWB - OWB	6,461.6	18,600.0	8,933.3	8,838.3	94.059	CC, ES
Ag State #31C-31-L - OWB - OWB	6,600.0	18,600.0	8,947.4	8,852.1	93.832	SF
Ag State #31N-31C-L - OWB - OWB	6,452.2	18,513.0	8,880.9	8,793.3	101.464	CC, ES
Ag State #31N-31C-L - OWB - OWB	6,650.0	18,513.0	8,909.7	8,821.6	101.093	SF
Ag State #4C-31-L - OWB\ - OWB\	6,461.3	18,590.0	8,885.1	8,801.9	106.782	CC, ES
Ag State #4C-31-L - OWB\ - OWB\	6,650.0	18,590.0	8,911.4	8,827.6	106.278	SF
Ag State #4N-31B-L - OWB - OWB	6,446.3	18,424.0	8,823.4	8,744.9	112.435	CC
Ag State #4N-31B-L - OWB - OWB	6,450.0	18,424.0	8,823.4	8,744.9	112.421	ES
Ag State #4N-31B-L - OWB - OWB	6,700.0	18,424.0	8,870.8	8,791.5	111.786	SF
Ag State #4N-31C-L - OWB - OWB	6,451.9	18,463.0	8,770.3	8,705.8	135.831	CC, ES
Ag State #4N-31C-L - OWB - OWB	6,800.0	18,463.0	8,859.2	8,793.1	134.164	SF
CHRISTIANSEN #35-15 - OWB - OWB	6,425.1	6,514.1	2,796.4	2,757.5	71.825	CC, ES
CHRISTIANSEN #35-15 - OWB - OWB	6,500.0	6,594.7	2,799.3	2,760.2	71.671	SF
DUNGAN #1 - OWB - OWB	6,402.3	6,366.8	4,027.8	3,905.1	32.842	CC, ES
DUNGAN #1 - OWB - OWB	6,850.0	6,786.0	4,163.0	4,031.4	31.633	SF
EASTMAN KODAK #1 - OWB - OWB	11,837.1	7,094.8	3.3	-254.9	0.013	No-Go Zone - Stop Drilling, (
ETTER #30-32 - OWB - OWB	6,407.4	6,470.7	9,531.1	9,502.3	331.000	CC, ES
ETTER #30-32 - OWB - OWB	7,200.0	7,047.0	9,924.8	9,892.0	302.753	SF
ETTER #30-33 - OWB - OWB	6,409.5	6,457.4	9,197.5	9,170.4	339.973	CC, ES
ETTER #30-33 - OWB - OWB	7,350.0	7,108.5	9,733.1	9,698.9	285.179	SF
Goetzel #12N-30A-M - OWB - OWB	6,430.4	15,710.0	8,938.3	8,884.2	165.168	CC, ES
Goetzel #12N-30A-M - OWB - OWB	6,950.0	15,710.0	9,128.4	9,070.8	158.529	SF
Goetzel #12N-30B-M - OWB - OWB	6,440.0	15,833.0	8,870.3	8,823.2	188.255	CC, ES
Goetzel #12N-30B-M - OWB - OWB	7,000.0	15,833.0	9,090.4	9,039.5	178.649	SF
Goetzel #12N-30C-M - OWB - OWB	6,443.2	15,798.0	8,927.3	8,871.4	159.683	CC, ES
Goetzel #12N-30C-M - OWB - OWB	6,900.0	15,798.0	9,075.5	9,016.7	154.319	SF
Goetzel #13C-30-M - OWB - OWB	6,455.6	15,980.0	8,816.1	8,763.7	168.268	CC, ES
Goetzel #13C-30-M - OWB - OWB	7,000.0	15,980.0	9,026.7	8,971.3	162.785	SF
Goetzel #13N-30A-M - OWB - OWB	6,433.9	15,730.0	8,799.2	8,747.9	171.540	CC, ES
Goetzel #13N-30A-M - OWB - OWB	7,000.0	15,730.0	9,025.7	8,971.0	164.790	SF
Goetzel #13N-30C-M - OWB - OWB	6,446.0	15,843.0	8,826.8	8,779.5	186.686	CC
Goetzel #13N-30C-M - OWB - OWB	6,450.0	15,843.0	8,826.8	8,779.5	186.619	ES
Goetzel #13N-30C-M - OWB - OWB	7,050.0	15,843.0	9,082.0	9,030.7	177.075	SF
Goetzel #32N-30B-M - OWB - OWB	6,438.7	15,797.0	8,972.4	8,912.7	150.121	CC, ES
Goetzel #32N-30B-M - OWB - OWB	6,850.0	15,797.0	9,093.0	9,030.7	145.899	SF
Goetzel #33C-30-M - OWB - OWB	6,454.6	15,917.0	8,881.7	8,835.5	192.119	CC, ES
Goetzel #33C-30-M - OWB - OWB	7,050.0	15,917.0	9,129.1	9,078.9	181.964	SF
Goetzel #33N-30B-M - OWB - OWB	6,439.7	15,752.0	8,824.8	8,778.1	189.085	CC, ES
Goetzel #33N-30B-M - OWB - OWB	7,050.0	15,752.0	9,084.2	9,033.5	179.247	SF
Goetzel #34C-30-M - OWB - OWB	6,455.8	15,705.0	9,212.9	9,147.3	140.589	CC, ES
Goetzel #34C-30-M - OWB - OWB	6,850.0	15,705.0	9,326.1	9,258.7	138.403	SF
Goetzel #34N-30C-M - OWB - OWB	6,442.3	15,615.0	9,114.6	9,055.9	155.281	CC, ES
Goetzel #34N-30C-M - OWB - OWB	6,900.0	15,615.0	9,265.8	9,204.8	151.828	SF
Great Western #25-12-15 - OWB - OWB	4,815.5	5,010.0	4,029.4	3,997.6	127.002	CC, ES
Great Western #25-12-15 - OWB - OWB	6,850.0	6,973.1	4,181.7	4,144.2	111.406	SF
Great Western #25-22-13 - OWB - OWB	0.0	0.0	4,681.2			
Great Western #25-22-13 - OWB - OWB	200.0	137.0	4,682.4	4,680.0	1,969.775	ES

CC - Min centre to center distance or convergent point, SF - min separation factor, ES - min ellipse separation

PDC Energy Inc.
Anticollision Summary Report

Company:	PDC - PLANNING DB	Local Co-ordinate Reference:	Well KODAK SOUTH 11C
Project:	WELD COUNTY	TVD Reference:	KB 28' @ 4771.0usft
Reference Site:	Kodak South	MD Reference:	KB 28' @ 4771.0usft
Site Error:	0.0 usft	North Reference:	True
Reference Well:	KODAK SOUTH 11C	Survey Calculation Method:	Minimum Curvature
Well Error:	0.0 usft	Output errors are at	2.00 sigma
Reference Wellbore	OWB	Database:	EDM 5000.15 Single User Db
Reference Design:	Plan #1	Offset TVD Reference:	Offset Datum

Summary						
Site Name	Reference Measured Depth (usft)	Offset Measured Depth (usft)	Distance Between Centres (usft)	Distance Between Ellipses (usft)	Separation Factor	Warning
Offset Well - Wellbore - Design						
Kodak South Offsets						
Great Western #25-22-13 - OWB - OWB	6,750.0	7,178.8	6,357.9	6,314.7	147.016	SF
Great Western #25-22-14 - OWB - OWB	0.0	0.0	4,792.1			
Great Western #25-22-14 - OWB - OWB	250.0	199.9	4,792.9	4,790.2	1,754.149	ES
Great Western #25-22-14 - OWB - OWB	6,950.0	6,851.7	5,400.8	5,365.5	153.210	SF
Great Western #25-22-18 - OWB - OWB	100.0	74.8	4,937.6	4,936.7	5,388.736	CC
Great Western #25-22-18 - OWB - OWB	200.0	134.0	4,938.0	4,935.7	2,185.399	ES
Great Western #25-22-18 - OWB - OWB	6,700.0	7,006.4	6,273.7	6,226.2	131.975	SF
Great Western #25-23 - OWB - OWB	0.0	0.0	4,679.9			
Great Western #25-23 - OWB - OWB	200.0	91.3	4,681.6	4,679.3	2,034.050	ES
Great Western #25-23 - OWB - OWB	6,900.0	6,891.1	5,688.2	5,647.0	137.962	SF
Great Western #25-24 - OWB - OWB	1,312.2	1,345.0	4,638.7	4,627.8	427.103	CC
Great Western #25-24 - OWB - OWB	1,400.0	1,387.4	4,639.0	4,627.8	412.245	ES
Great Western #25-24 - OWB - OWB	6,750.0	7,168.3	5,334.6	5,285.3	108.358	SF
Great Western #25-24-23 - OWB - OWB	1,046.6	1,076.0	4,640.2	4,630.4	473.450	CC, ES
Great Western #25-24-23 - OWB - OWB	6,950.0	7,480.2	6,129.6	6,067.1	98.010	SF
Great Western #25-24-24 - OWB - OWB	2,982.7	3,280.8	4,525.0	4,495.4	153.031	CC
Great Western #25-24-24 - OWB - OWB	3,200.0	3,474.4	4,526.2	4,494.5	142.628	ES
Great Western #25-24-24 - OWB - OWB	6,650.0	7,232.0	4,705.3	4,648.3	82.461	SF
Great Western #25-53 - OWB - OWB	2,690.1	2,749.0	4,672.3	4,656.1	289.653	CC
Great Western #25-53 - OWB - OWB	3,100.0	3,139.1	4,674.5	4,655.9	251.472	ES
Great Western #25-53 - OWB - OWB	6,850.0	7,009.0	4,844.9	4,807.9	130.926	SF
GREAT WESTERN #26-12 - OWB - OWB	0.0	0.0	2,538.1			
GREAT WESTERN #26-12 - OWB - OWB	300.0	275.6	2,539.2	2,533.6	454.309	ES
GREAT WESTERN #26-12 - OWB - OWB	9,500.0	7,339.0	3,212.7	3,119.3	34.418	SF
GREAT WESTERN #26-13 - OWB - OWB	8,239.5	6,585.5	1,354.6	1,301.6	25.520	CC
GREAT WESTERN #26-13 - OWB - OWB	8,300.0	6,585.9	1,356.0	1,301.5	24.879	ES
GREAT WESTERN #26-13 - OWB - OWB	8,700.0	6,588.3	1,430.8	1,368.9	23.125	SF
GREAT WESTERN #26-14 - OWB - OWB	8,066.6	7,222.5	246.1	178.3	3.629	CC, ES
GREAT WESTERN #26-14 - OWB - OWB	8,100.0	7,223.3	248.4	179.3	3.595	SF
GREAT WESTERN #26-22 - OWB - OWB	250.0	240.0	2,538.9	2,533.3	448.451	CC
GREAT WESTERN #26-22 - OWB - OWB	400.0	390.0	2,540.9	2,532.1	289.177	ES
GREAT WESTERN #26-22 - OWB - OWB	7,450.0	7,101.7	2,855.3	2,705.8	19.104	SF
GREAT WESTERN #26-23 - OWB - OWB	276.6	260.0	1,089.8	1,084.3	197.230	CC
GREAT WESTERN #26-23 - OWB - OWB	400.0	385.6	1,090.9	1,082.9	137.093	ES
GREAT WESTERN #26-23 - OWB - OWB	7,350.0	7,129.8	1,724.8	1,673.2	33.421	SF
GREAT WESTERN #26-24 - OWB - OWB	253.0	225.1	232.6	229.8	81.650	CC
GREAT WESTERN #26-24 - OWB - OWB	300.0	271.9	232.8	229.7	73.713	ES
GREAT WESTERN #26-24 - OWB - OWB	7,100.0	6,965.3	419.2	383.5	11.726	SF
GREAT WESTERN #26-44 - OWB - OWB	1,417.7	1,387.4	1,756.9	1,748.6	209.742	CC, ES
GREAT WESTERN #26-44 - OWB - OWB	6,700.0	6,801.4	2,829.1	2,797.4	89.393	SF
GREAT WESTERN #26-53 - OWB - OWB	270.8	252.2	1,066.6	1,063.6	350.035	CC
GREAT WESTERN #26-53 - OWB - OWB	300.0	280.2	1,066.7	1,063.5	329.160	ES
GREAT WESTERN #26-53 - OWB - OWB	7,900.0	7,095.9	1,186.2	1,143.4	27.710	SF
GREAT WESTERN #27-12 - OWB - OWB	13,301.3	7,387.8	2,864.4	2,660.6	14.054	CC
GREAT WESTERN #27-12 - OWB - OWB	13,400.0	7,387.8	2,866.1	2,659.7	13.890	ES
GREAT WESTERN #27-12 - OWB - OWB	13,900.0	7,387.9	2,926.3	2,710.4	13.558	SF
GREAT WESTERN #27-13 - OWB - OWB	13,284.1	7,204.6	1,554.5	1,354.5	7.772	CC
GREAT WESTERN #27-13 - OWB - OWB	13,300.0	7,204.6	1,554.6	1,354.1	7.756	ES
GREAT WESTERN #27-13 - OWB - OWB	13,500.0	7,204.1	1,569.4	1,365.3	7.691	SF
GREAT WESTERN #27-14 - OWB - OWB	13,290.0	7,134.3	192.1	-2.5	0.987	No-Go Zone - Stop Drilling, (
GREAT WESTERN #27-22 - OWB - OWB	11,794.0	7,114.7	2,534.8	2,277.3	9.845	CC
GREAT WESTERN #27-22 - OWB - OWB	11,900.0	7,114.8	2,537.0	2,276.9	9.755	ES
GREAT WESTERN #27-22 - OWB - OWB	12,200.0	7,115.1	2,567.1	2,300.9	9.645	SF

CC - Min centre to center distance or convergent point, SF - min separation factor, ES - min ellipse separation

PDC Energy Inc.
Anticollision Summary Report

Company:	PDC - PLANNING DB	Local Co-ordinate Reference:	Well KODAK SOUTH 11C
Project:	WELD COUNTY	TVD Reference:	KB 28' @ 4771.0usft
Reference Site:	Kodak South	MD Reference:	KB 28' @ 4771.0usft
Site Error:	0.0 usft	North Reference:	True
Reference Well:	KODAK SOUTH 11C	Survey Calculation Method:	Minimum Curvature
Well Error:	0.0 usft	Output errors are at	2.00 sigma
Reference Wellbore	OWB	Database:	EDM 5000.15 Single User Db
Reference Design:	Plan #1	Offset TVD Reference:	Offset Datum

Summary						
Site Name	Reference Measured Depth (usft)	Offset Measured Depth (usft)	Distance Between Centres (usft)	Distance Between Ellipses (usft)	Separation Factor	Warning
Offset Well - Wellbore - Design						
Kodak South Offsets						
GREAT WESTERN #27-23 - OWB - OWB	12,015.1	7,310.0	1,527.4	1,353.4	8.782	CC, ES
GREAT WESTERN #27-23 - OWB - OWB	12,200.0	7,295.4	1,538.5	1,360.7	8.656	SF
GREAT WESTERN #27-24 - OWB - OWB	12,018.9	7,306.2	256.5	85.0	1.496	Collision Avoidance Req., CC
GREAT WESTERN #27-32 - OWB - OWB	10,642.7	7,234.2	2,872.9	2,745.0	22.464	CC
GREAT WESTERN #27-32 - OWB - OWB	10,700.0	7,233.8	2,873.5	2,744.1	22.204	ES
GREAT WESTERN #27-32 - OWB - OWB	11,500.0	7,228.0	2,998.1	2,852.4	20.571	SF
GREAT WESTERN #27-33 - OWB - OWB	10,665.8	7,262.6	1,542.7	1,406.5	11.325	CC
GREAT WESTERN #27-33 - OWB - OWB	10,700.0	7,262.5	1,543.1	1,406.1	11.265	ES
GREAT WESTERN #27-33 - OWB - OWB	10,900.0	7,262.5	1,560.4	1,420.0	11.112	SF
GREAT WESTERN #27-34 - OWB - OWB	10,609.3	7,273.9	227.7	97.1	1.744	Collision Risk Procedures Req., CC
GREAT WESTERN #27-42 - OWB - OWB	9,437.4	7,106.7	2,778.3	2,582.9	14.219	CC
GREAT WESTERN #27-42 - OWB - OWB	9,500.0	7,106.7	2,779.0	2,582.0	14.111	ES
GREAT WESTERN #27-42 - OWB - OWB	10,100.0	7,107.2	2,856.2	2,646.4	13.614	SF
GREAT WESTERN #27-43 - OWB - OWB	9,345.1	7,139.0	1,617.5	1,523.9	17.279	CC
GREAT WESTERN #27-43 - OWB - OWB	9,400.0	7,139.0	1,618.4	1,523.4	17.021	ES
GREAT WESTERN #27-43 - OWB - OWB	9,800.0	7,139.4	1,680.3	1,577.2	16.310	SF
GREAT WESTERN #27-44 - OWB - OWB	9,363.6	7,167.1	337.6	241.6	3.518	CC, ES, SF
GREAT WESTERN #27-51 - OWB - OWB	9,925.3	7,111.1	3,498.9	3,290.9	16.815	CC
GREAT WESTERN #27-51 - OWB - OWB	10,000.0	7,111.2	3,499.7	3,289.8	16.667	ES
GREAT WESTERN #27-51 - OWB - OWB	10,900.0	7,111.9	3,632.2	3,402.9	15.845	SF
GREAT WESTERN #27-53 - OWB - OWB	12,645.9	7,221.5	885.6	707.8	4.980	CC, ES
GREAT WESTERN #27-53 - OWB - OWB	12,700.0	7,221.2	887.3	708.3	4.957	SF
GREAT WESTERN #27-54 - OWB - OWB	9,651.6	7,094.3	1,048.4	958.9	11.709	CC, ES
GREAT WESTERN #27-54 - OWB - OWB	9,800.0	7,094.5	1,058.9	966.6	11.475	SF
GREAT WESTERN #35-31 - OWB - OWB	2,315.0	2,317.7	1,677.9	1,665.1	131.163	CC
GREAT WESTERN #35-31 - OWB - OWB	2,400.0	2,400.2	1,678.1	1,664.7	125.377	ES
GREAT WESTERN #35-31 - OWB - OWB	6,450.0	6,664.5	1,854.0	1,813.7	46.036	SF
GREAT WESTERN #35-41 - OWB - OWB	806.8	775.8	1,748.9	1,743.6	327.984	CC, ES
GREAT WESTERN #35-41 - OWB - OWB	6,550.0	6,828.9	2,975.7	2,933.1	69.956	SF
GREAT WESTERN #35-52 - OWB - OWB	7,307.1	7,051.0	1,533.3	1,386.0	10.408	CC
GREAT WESTERN #35-52 - OWB - OWB	7,350.0	7,062.9	1,533.9	1,385.9	10.363	ES
GREAT WESTERN #35-52 - OWB - OWB	7,528.0	7,085.0	1,549.9	1,399.1	10.279	SF
Hall #25-33D - OWB - OWB	4,037.7	4,084.0	6,797.6	6,761.7	188.935	CC
Hall #25-33D - OWB - OWB	4,100.0	4,116.2	6,797.8	6,761.7	188.232	ES
Hall #25-33D - OWB - OWB	6,900.0	6,986.0	6,995.4	6,948.2	148.041	SF
HALL #25-34 - OWB - OWB	6,419.2	6,531.4	6,877.4	6,856.1	322.615	CC, ES
HALL #25-34 - OWB - OWB	7,050.0	6,918.9	7,142.7	7,118.9	300.035	SF
KODAK #10 - OWB - OWB	14,259.2	7,350.0	2,485.6	2,245.7	10.362	CC
KODAK #10 - OWB - OWB	18,976.0	12,016.7	2,543.6	2,068.0	5.348	ES, SF
KODAK #11 - OWB - OWB	13,842.6	7,776.1	4,252.9	4,027.3	18.847	CC
KODAK #11 - OWB - OWB	17,700.0	11,463.2	4,292.3	3,873.7	10.256	ES
KODAK #11 - OWB - OWB	18,400.0	11,713.0	4,348.4	3,908.4	9.882	SF
KODAK #12 - OWB - OWB	14,337.2	7,617.1	2,708.3	2,471.4	11.430	CC
KODAK #12 - OWB - OWB	18,700.0	11,900.0	2,761.6	2,300.9	5.994	ES
KODAK #12 - OWB - OWB	18,800.0	11,900.0	2,766.0	2,303.6	5.982	SF
KODAK #13 - OWB - OWB	15,583.9	8,760.0	2,257.6	1,957.7	7.526	CC
KODAK #13 - OWB - OWB	18,976.0	12,198.7	2,279.7	1,801.9	4.771	ES, SF
KODAK #34-11 - OWB - OWB	9,304.6	7,091.6	1,255.8	1,064.1	6.550	CC, ES
KODAK #34-11 - OWB - OWB	9,500.0	7,091.7	1,270.9	1,074.8	6.479	SF
KODAK #34-12 - OWB - OWB	10,358.8	7,091.5	1,259.0	1,040.0	5.747	CC
KODAK #34-12 - OWB - OWB	10,400.0	7,091.5	1,259.7	1,039.5	5.721	ES
KODAK #34-12 - OWB - OWB	10,500.0	7,091.6	1,266.9	1,044.5	5.696	SF
KODAK #34-15 - OWB - OWB	10,118.6	7,090.3	1,918.5	1,705.7	9.017	CC

CC - Min centre to center distance or convergent point, SF - min separation factor, ES - min ellipse separation

PDC Energy Inc.
Anticollision Summary Report

Company:	PDC - PLANNING DB	Local Co-ordinate Reference:	Well KODAK SOUTH 11C
Project:	WELD COUNTY	TVD Reference:	KB 28' @ 4771.0usft
Reference Site:	Kodak South	MD Reference:	KB 28' @ 4771.0usft
Site Error:	0.0 usft	North Reference:	True
Reference Well:	KODAK SOUTH 11C	Survey Calculation Method:	Minimum Curvature
Well Error:	0.0 usft	Output errors are at	2.00 sigma
Reference Wellbore	OWB	Database:	EDM 5000.15 Single User Db
Reference Design:	Plan #1	Offset TVD Reference:	Offset Datum

Summary						
Site Name	Reference Measured Depth (usft)	Offset Measured Depth (usft)	Distance Between Centres (usft)	Distance Between Ellipses (usft)	Separation Factor	Warning
Offset Well - Wellbore - Design						
Kodak South Offsets						
KODAK #34-15 - OWB - OWB	10,200.0	7,090.3	1,920.2	1,705.3	8.935	ES
KODAK #34-15 - OWB - OWB	10,400.0	7,090.5	1,939.0	1,719.6	8.836	SF
KODAK #34-21 - OWB - OWB	12,088.6	7,096.0	1,229.2	964.2	4.639	CC
KODAK #34-21 - OWB - OWB	12,100.0	7,096.0	1,229.2	963.9	4.633	ES
KODAK #34-21 - OWB - OWB	12,200.0	7,096.1	1,234.2	966.6	4.613	SF
KODAK #34-22 - OWB - OWB	13,235.9	7,101.0	846.6	550.9	2.863	CC, ES
KODAK #34-22 - OWB - OWB	13,300.0	7,101.0	849.0	551.9	2.858	SF
KODAK #34-25 - OWB - OWB	12,914.4	7,095.7	1,893.2	1,606.2	6.596	CC
KODAK #34-25 - OWB - OWB	13,000.0	7,095.8	1,895.1	1,605.9	6.552	ES
KODAK #34-25 - OWB - OWB	13,100.0	7,095.9	1,902.3	1,610.9	6.528	SF
KODAK #35-21 - OWB - OWB	6,642.0	6,602.0	1,207.0	1,070.2	8.822	CC
KODAK #35-21 - OWB - OWB	6,700.0	6,656.0	1,207.4	1,069.7	8.765	ES
KODAK #35-21 - OWB - OWB	6,900.0	6,825.5	1,218.2	1,077.5	8.659	SF
KODAK #35-22 - OWB - OWB	8,316.0	7,087.7	1,238.5	1,071.2	7.405	CC, ES
KODAK #35-22 - OWB - OWB	8,500.0	7,087.8	1,252.1	1,080.7	7.307	SF
KODAK #9 - OWB - OWB	14,281.9	7,275.5	3,279.8	3,047.2	14.097	CC
KODAK #9 - OWB - OWB	18,976.0	11,884.1	3,307.2	2,834.4	6.994	ES, SF
Kodak North FD 25-040HC - OWB - OWB	300.6	331.6	2,397.0	2,393.7	734.934	CC, ES
Kodak North FD 25-040HC - OWB - OWB	10,500.0	6,326.3	5,124.7	5,029.6	53.870	SF
Kodak North FD 25-040HN - OWB - OWB	188.0	198.0	2,398.8	2,396.6	1,070.247	CC
Kodak North FD 25-040HN - OWB - OWB	250.0	251.3	2,398.9	2,396.2	879.722	ES
Kodak North FD 25-040HN - OWB - OWB	11,200.0	5,858.0	5,755.0	5,656.5	58.402	SF
Kodak North FD 25-080HN - OWB - OWB	211.3	221.3	2,398.4	2,395.6	857.171	CC
Kodak North FD 25-080HN - OWB - OWB	250.0	248.3	2,398.5	2,395.5	794.668	ES
Kodak North FD 25-080HN - OWB - OWB	10,300.0	6,328.4	4,714.6	4,630.3	55.916	SF
Kodak North FD 25-121HN - OWB - OWB	366.4	422.7	2,297.0	2,293.0	567.192	CC
Kodak North FD 25-121HN - OWB - OWB	400.0	456.1	2,297.1	2,292.8	535.125	ES
Kodak North FD 25-121HN - OWB - OWB	9,500.0	6,467.0	3,780.2	3,707.9	52.283	SF
Kodak North FD 25-161HN - OWB - OWB	222.8	232.8	2,298.0	2,295.2	808.796	CC
Kodak North FD 25-161HN - OWB - OWB	250.0	256.5	2,298.1	2,295.1	767.629	ES
Kodak North FD 25-161HN - OWB - OWB	9,100.0	6,646.0	3,218.8	3,155.2	50.540	SF
Kodak North FD 28-119HN - OWB - OWB	250.5	260.6	2,403.4	2,400.6	877.169	CC
Kodak North FD 28-119HN - OWB - OWB	300.0	309.4	2,403.6	2,400.5	788.975	ES
Kodak North FD 28-119HN - OWB - OWB	14,600.0	14,686.0	3,376.2	2,963.2	8.175	SF
Kodak North FD 28-122HC - OWB - OWB	0.0	10.0	2,300.8			
Kodak North FD 28-122HC - OWB - OWB	250.0	255.9	2,301.4	2,298.4	766.656	ES
Kodak North FD 28-122HC - OWB - OWB	14,600.0	15,004.0	3,173.9	2,756.9	7.612	SF
Kodak North FD 28-162HC - OWB - OWB	0.0	10.0	2,300.2			
Kodak North FD 28-162HC - OWB - OWB	13,300.0	13,962.0	2,527.9	2,168.0	7.024	ES
Kodak North FD 28-162HC - OWB - OWB	13,600.0	14,100.0	2,542.8	2,172.3	6.862	SF
Kodak North FD 28-162HC - ST01 - ST01	0.0	10.0	2,300.2			
Kodak North FD 28-162HC - ST01 - ST01	13,700.0	14,311.0	2,485.4	2,106.4	6.557	ES
Kodak North FD 28-162HC - ST01 - ST01	14,400.0	14,922.0	2,523.7	2,110.3	6.104	SF
Kodak North FD 28-162HN - OWB - OWB	0.0	10.0	2,301.6			
Kodak North FD 28-162HN - OWB - OWB	14,300.0	14,730.0	2,641.0	2,231.1	6.443	ES
Kodak North FD 28-162HN - OWB - OWB	14,500.0	14,730.0	2,653.7	2,240.7	6.424	SF
Kodak North FD 28-199HN - OWB - OWB	12,334.1	12,922.6	2,206.0	1,898.2	7.167	CC
Kodak North FD 28-199HN - OWB - OWB	14,200.0	14,718.5	2,230.4	1,825.0	5.502	ES
Kodak North FD 28-199HN - OWB - OWB	14,400.0	14,829.0	2,241.4	1,828.8	5.432	SF
LONG #1 - OWB - OWB	4,343.2	4,274.0	6,673.9	6,590.4	79.886	CC, ES
LONG #1 - OWB - OWB	4,700.0	4,274.0	6,683.4	6,599.5	79.661	SF
LONG #3 - OWB - OWB	250.0	225.0	5,546.4	5,541.0	1,027.175	CC
LONG #3 - OWB - OWB	6,400.8	6,372.4	5,576.1	5,453.1	45.318	ES

CC - Min centre to center distance or convergent point, SF - min separation factor, ES - min ellipse separation

PDC Energy Inc.
Anticollision Summary Report

Company:	PDC - PLANNING DB	Local Co-ordinate Reference:	Well KODAK SOUTH 11C
Project:	WELD COUNTY	TVD Reference:	KB 28' @ 4771.0usft
Reference Site:	Kodak South	MD Reference:	KB 28' @ 4771.0usft
Site Error:	0.0 usft	North Reference:	True
Reference Well:	KODAK SOUTH 11C	Survey Calculation Method:	Minimum Curvature
Well Error:	0.0 usft	Output errors are at	2.00 sigma
Reference Wellbore	OWB	Database:	EDM 5000.15 Single User Db
Reference Design:	Plan #1	Offset TVD Reference:	Offset Datum

Summary						
Site Name	Reference Measured Depth (usft)	Offset Measured Depth (usft)	Distance Between Centres (usft)	Distance Between Ellipses (usft)	Separation Factor	Warning
Offset Well - Wellbore - Design						
Kodak South Offsets						
LONG #3 - OWB - OWB	6,950.0	6,869.8	5,771.6	5,637.5	43.032	SF
MERLIN #29E-10-1C - OWB - OWB	18,853.7	12,600.0	2,948.2	2,478.9	6.281	CC
MERLIN #29E-10-1C - OWB - OWB	18,900.0	12,600.0	2,948.6	2,478.2	6.268	ES
MERLIN #29E-10-1C - OWB - OWB	18,976.0	12,557.6	2,950.5	2,479.3	6.262	SF
MERLIN #29E-10-3C - OWB - OWB	18,976.0	12,237.0	2,142.7	1,678.4	4.615	CC, ES, SF
MERLIN #29E-10-5N - OWB - OWB	18,976.0	12,210.0	1,474.8	1,013.8	3.199	CC, ES, SF
MERSHON #26-33 - OWB - OWB	1,817.6	1,801.0	1,731.5	1,713.4	95.621	CC, ES
MERSHON #26-33 - OWB - OWB	6,600.0	6,766.2	2,080.5	2,037.7	48.600	SF
MERSHON #26-43 - OWB - OWB	100.0	65.4	1,795.1	1,793.7	1,300.880	CC
MERSHON #26-43 - OWB - OWB	250.0	198.1	1,796.5	1,792.2	416.883	ES
MERSHON #26-43 - OWB - OWB	6,700.0	6,877.7	3,201.9	3,155.4	68.955	SF
MERSHON #26-54 - OWB - OWB	982.0	955.7	1,763.6	1,756.4	246.031	CC
MERSHON #26-54 - OWB - OWB	1,800.0	1,773.2	1,763.8	1,753.5	171.618	ES
MERSHON #26-54 - OWB - OWB	6,650.0	6,689.3	2,468.5	2,431.9	67.427	SF
PAVISTMA #12 - OWB - OWB	14,449.3	17,039.0	1,884.1	1,410.9	3.982	CC
PAVISTMA #12 - OWB - OWB	16,600.0	14,903.4	1,884.5	1,408.3	3.958	ES
PAVISTMA #12 - OWB - OWB	18,300.0	13,230.4	1,890.5	1,410.3	3.937	SF
POUDRE #10-28 - OWB - OWB	15,904.6	7,305.5	1,577.3	1,305.5	5.803	CC, ES
POUDRE #10-28 - OWB - OWB	16,000.0	7,304.7	1,580.2	1,306.3	5.770	SF
POUDRE #11-28 - OWB - OWB	17,167.6	7,235.7	1,568.2	1,265.9	5.188	CC
POUDRE #11-28 - OWB - OWB	17,200.0	7,235.6	1,568.5	1,265.5	5.177	ES
POUDRE #11-28 - OWB - OWB	17,300.0	7,235.4	1,573.7	1,269.5	5.172	SF
POUDRE #14-28 - OWB - OWB	17,148.1	7,136.0	177.4	-117.8	0.601	No-Go Zone - Stop Drilling, (
POUDRE #15-28 - OWN - OWN	15,892.3	7,219.9	260.6	-4.8	0.982	No-Go Zone - Stop Drilling, (
POUDRE #19-28 - OWB - OWB	17,800.4	7,179.2	908.5	594.5	2.894	CC, ES, SF
POUDRE #23-28 - OWB - OWB	16,593.9	7,180.3	922.3	644.9	3.325	CC
POUDRE #23-28 - OWB - OWB	16,600.0	7,180.2	922.3	644.8	3.323	ES, SF
POUDRE #25-28 - OWB - OWB	16,599.2	7,432.1	2,130.4	1,839.7	7.327	CC
POUDRE #25-28 - OWB - OWB	16,600.0	7,432.2	2,130.4	1,839.6	7.327	ES
POUDRE #25-28 - OWB - OWB	16,800.0	7,433.3	2,139.8	1,845.1	7.259	SF
POUDRE #36-28 - OWB - OWB	16,464.6	7,235.5	332.1	49.6	1.175	Collision Avoidance Req., CC
RAINDANCE #2 - OWB - OWB	18,892.6	12,515.0	911.4	440.9	1.937	Collision Risk Procedures Re
RAINDANCE #2 - OWB - OWB	18,900.0	12,509.8	911.4	440.9	1.937	Collision Risk Procedures Re
Raindance #29E-10-1C - OWB - OWB	18,976.0	11,958.0	1,017.6	659.7	2.843	CC, ES, SF
Raindance #29E-10-2N - OWB - OWB	18,976.0	11,670.0	812.2	567.5	3.320	CC, ES, SF
Raindance #29E-10-3N - OWB - OWB	18,976.0	11,775.0	671.9	581.4	7.425	CC, ES, SF
Raindance #29E-20-4C - OWB - OWB	14,455.6	17,112.0	1,378.9	900.8	2.884	CC
Raindance #29E-20-4C - OWB - OWB	17,146.3	14,420.0	1,379.1	900.5	2.881	ES, SF
RAINDANCE #3 - OWB - OWB	18,976.0	12,022.0	1,248.7	841.9	3.070	CC, ES, SF
RAINDANCE #4 - OWB - OWB	14,427.8	17,000.0	1,227.2	753.9	2.593	CC, ES
RAINDANCE #4 - OWB - OWB	17,600.0	13,829.9	1,228.5	754.5	2.592	SF
RAINDANCE #5 - OWB - OWB	16,659.9	14,762.7	1,548.0	1,072.2	3.253	CC
RAINDANCE #5 - OWB - OWB	16,700.0	14,748.0	1,548.2	1,072.0	3.251	ES, SF
RAINDANCE #7 - OWB - OWB	14,800.0	16,697.4	487.3	39.7	1.089	Collision Avoidance Req., SF
RAINDANCE #7 - OWB - OWB	14,900.0	16,602.6	486.4	39.6	1.089	Collision Avoidance Req., ES
RAINDANCE #7 - OWB - OWB	15,000.0	16,504.9	486.1	40.9	1.092	Collision Avoidance Req., CC
RAINDANCE #8 - OWB - OWB	18,976.0	12,150.0	797.9	504.4	2.719	CC, ES, SF
SLOAN #3 - OWB - OWB	250.0	223.0	8,193.2	8,187.8	1,527.210	CC
SLOAN #3 - OWB - OWB	6,400.8	6,370.4	8,208.0	8,085.3	66.868	ES
SLOAN #3 - OWB - OWB	7,100.0	6,964.6	8,518.5	8,382.6	62.703	SF
STATE #6-36 - OWB - OWB	6,407.7	6,351.3	6,577.1	6,453.7	53.304	CC, ES
STATE #6-36 - OWB - OWB	7,000.0	6,876.7	6,805.3	6,671.4	50.831	SF
STATE #8-36 - OWB - OWB	6,411.2	6,362.8	4,524.6	4,399.9	36.286	CC, ES

CC - Min centre to center distance or convergent point, SF - min separation factor, ES - min ellipse separation

PDC Energy Inc.
Anticollision Summary Report

Company:	PDC - PLANNING DB	Local Co-ordinate Reference:	Well KODAK SOUTH 11C
Project:	WELD COUNTY	TVD Reference:	KB 28' @ 4771.0usft
Reference Site:	Kodak South	MD Reference:	KB 28' @ 4771.0usft
Site Error:	0.0 usft	North Reference:	True
Reference Well:	KODAK SOUTH 11C	Survey Calculation Method:	Minimum Curvature
Well Error:	0.0 usft	Output errors are at	2.00 sigma
Reference Wellbore	OWB	Database:	EDM 5000.15 Single User Db
Reference Design:	Plan #1	Offset TVD Reference:	Offset Datum

Summary						
Site Name	Reference Measured Depth (usft)	Offset Measured Depth (usft)	Distance Between Centres (usft)	Distance Between Ellipses (usft)	Separation Factor	Warning
Offset Well - Wellbore - Design						
Kodak South Offsets						
STATE #8-36 - OWB - OWB	6,850.0	6,773.0	4,649.1	4,516.7	35.106	SF
STATE M #36-1 - OWB - OWB	6,424.6	6,562.2	7,998.4	7,974.2	331.338	CC, ES
STATE M #36-1 - OWB - OWB	7,450.0	7,262.5	8,609.1	8,573.8	244.132	SF
STATE M #36-3 - OWB - OWB	6,406.7	6,337.8	5,476.2	5,452.7	233.390	CC, ES
STATE M #36-3 - OWB - OWB	6,800.0	6,728.9	5,578.2	5,553.8	228.181	SF
TURNER #1-25 - OWB - OWB	4,435.4	4,353.0	8,436.5	8,351.4	99.184	CC, ES
TURNER #1-25 - OWB - OWB	5,000.0	4,353.0	8,455.3	8,369.7	98.756	SF
TURNER #1-31 - OWB - OWB	4,486.8	4,352.0	9,146.7	9,061.2	107.026	CC
TURNER #1-31 - OWB - OWB	4,500.0	4,352.0	9,146.7	9,061.2	107.003	ES
TURNER #1-31 - OWB - OWB	5,200.0	4,352.0	9,174.5	9,088.3	106.422	SF
WARDE #1-26 - OWB - OWB	250.0	221.0	1,575.6	1,570.2	295.612	CC
WARDE #1-26 - OWB - OWB	6,400.8	6,368.4	1,588.8	1,465.9	12.934	ES
WARDE #1-26 - OWB - OWB	6,600.0	6,565.0	1,616.3	1,489.2	12.719	SF

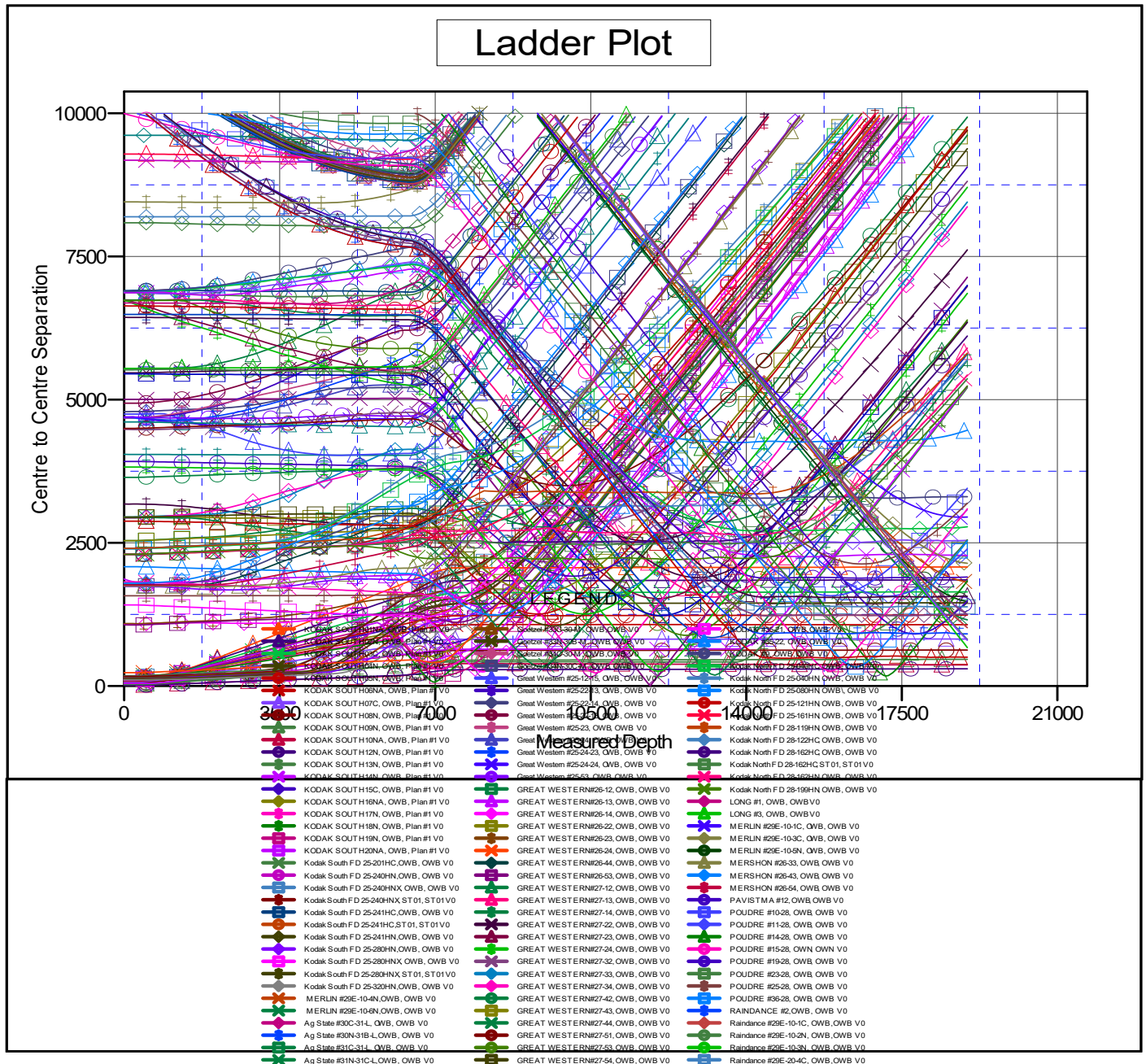
Anticollision Summary Report

Company:	PDC - PLANNING DB	Local Co-ordinate Reference:	Well KODAK SOUTH 11C
Project:	WELD COUNTY	TVD Reference:	KB 28' @ 4771.0usft
Reference Site:	Kodak South	MD Reference:	KB 28' @ 4771.0usft
Site Error:	0.0 usft	North Reference:	True
Reference Well:	KODAK SOUTH 11C	Survey Calculation Method:	Minimum Curvature
Well Error:	0.0 usft	Output errors are at	2.00 sigma
Reference Wellbore	OWB	Database:	EDM 5000.15 Single User Db
Reference Design:	Plan #1	Offset TVD Reference:	Offset Datum

Coordinates are relative to: KODAK SOUTH 11C

Coordinate System is US State Plane 1983, Colorado Northern Zone

Grid Convergence at Surface is: 0.41°



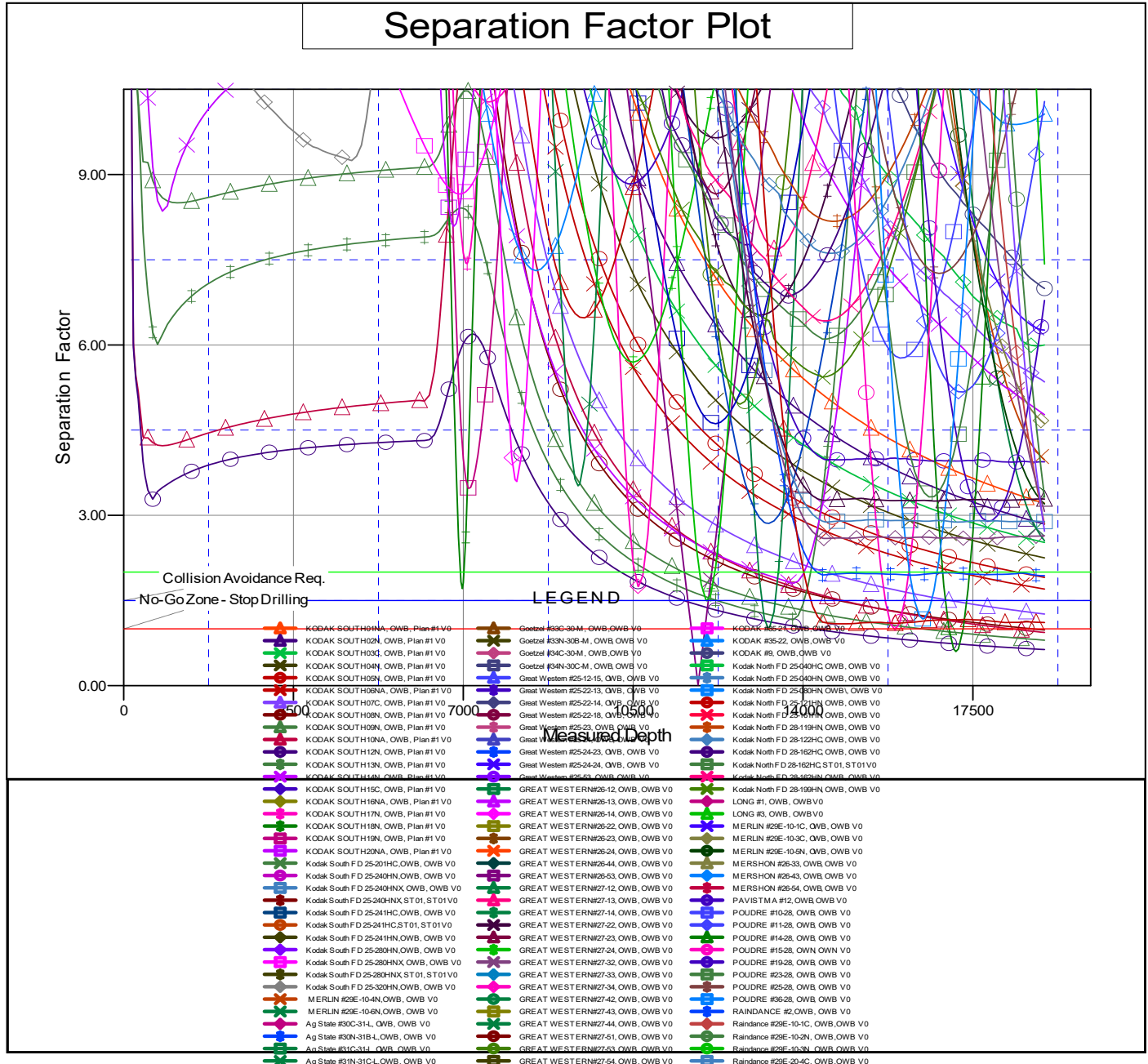
CC - Min centre to center distance or convergent point, SF - min separation factor, ES - min ellipse separation

Anticollision Summary Report

Company:	PDC - PLANNING DB	Local Co-ordinate Reference:	Well KODAK SOUTH 11C
Project:	WELD COUNTY	TVD Reference:	KB 28' @ 4771.0usft
Reference Site:	Kodak South	MD Reference:	KB 28' @ 4771.0usft
Site Error:	0.0 usft	North Reference:	True
Reference Well:	KODAK SOUTH 11C	Survey Calculation Method:	Minimum Curvature
Well Error:	0.0 usft	Output errors are at	2.00 sigma
Reference Wellbore	OWB	Database:	EDM 5000.15 Single User Db
Reference Design:	Plan #1	Offset TVD Reference:	Offset Datum

Reference Depths are relative to KB 28' @ 4771.0usft
Offset Depths are relative to Offset Datum
Central Meridian is 105° 30' 0.000 W

Coordinates are relative to: KODAK SOUTH 11C
Coordinate System is US State Plane 1983, Colorado Northern Zone
Grid Convergence at Surface is: 0.41°



CC - Min centre to center distance or covergent point, SF - min separation factor, ES - min ellipse separation