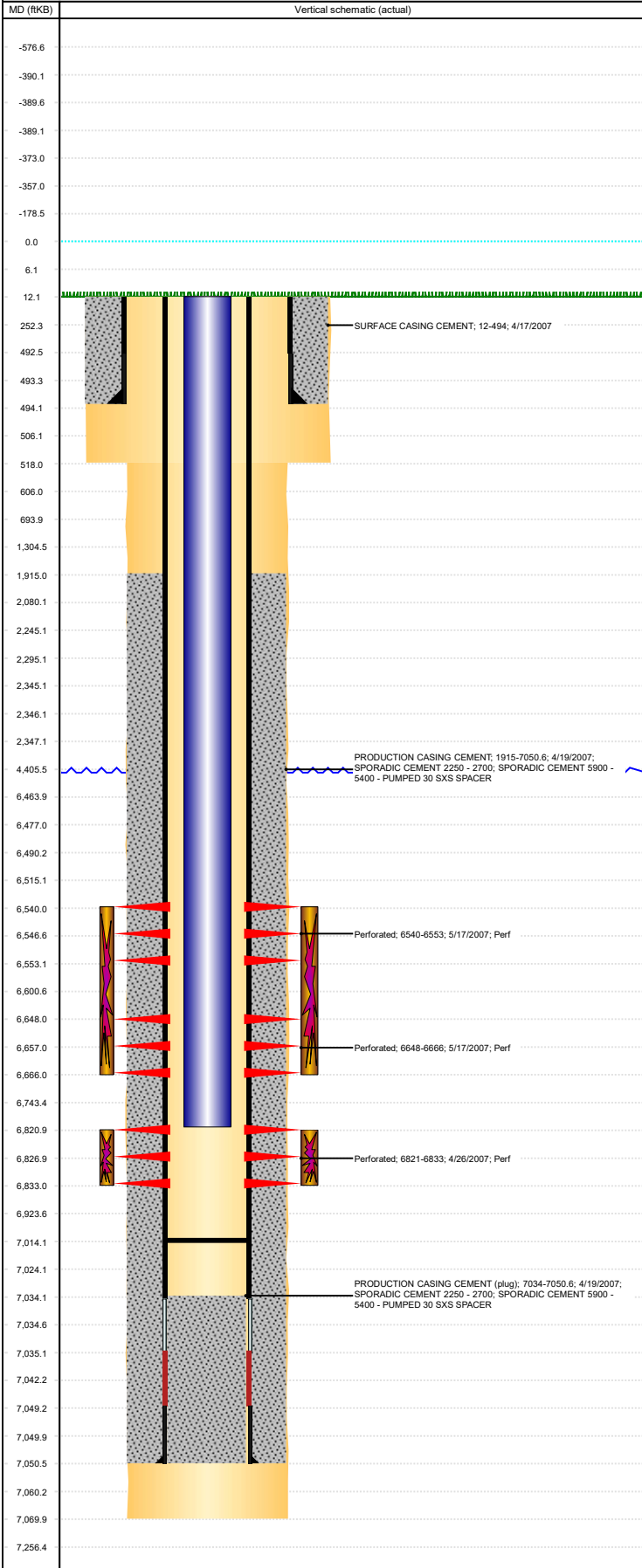




P&A Wellbore For State

Well Name: TRINITY USX AA07-17

Land, Original Hole, 3/27/2023 11:54:39 AM



Well Header										
Surface UW# 0512324595		Business Unit Rockies		Gov Auth Dist		Prod Tree Loc Land				
Orig. KB to Gnd (ft) 12.00		Original Spud Date 4/17/2007		Abandon Date		Well Sub-Status TA (AT SURFACE)		High... N		
Comment										
Surface Location (Congressional)										
Qtr 3 NW	Qtr 4 NE	Section 7	Twonshp 6	Twonsh... N	Range 63	Rng E... W	Latitude (°) 40.50480268 5	Longitude (°) -104.475270896		
Wellbore Sections										
Section Des		Hole Size (in)		Act Top (ftKB)		Act Btm (ftKB)				
SURFACE		12 1/4		12.0		518.0				
PRODUCTION		7 7/8		518.0		7,070.0				
Casing Strings										
Csg Des		Run Date		OD (in)	Wt/Len (lb/ft)	Grade	Top Depth (MD) (ftKB)	Set Depth (MD) (ftKB)		
Surface		4/17/2007		8 5/8	24.00	J-55	12	494		
Production Casing		4/19/2007		4 1/2	11.60	M-80	12	7050.6		
Cement										
Des		Start Date		Top (ftKB)		Btm (ftKB)				
SURFACE CASING CEMENT		4/17/2007		12.0		494.0				
PRODUCTION CASING CEMENT		4/19/2007		1,915.0		7,050.6				
Zone Statuses										
Zone Name	Status Date	Status	Fluid Type	Job			Prod Method			
NIOBRARA	6/26/2007	PR		DRILLING/COMPLETION - ORIGINAL, 4/17/2007...						
CODELL	6/26/2007	PR		DRILLING/COMPLETION - ORIGINAL, 4/17/2007...						
Perforation Data										
Linked Zone		Explosive Type	Entered Shot Total	Top (ftKB)	Btm (ftKB)	Date				
NIOBRARA, Original Hole		A	52	6,540.0	6,553.0	5/17/2007				
NIOBRARA, Original Hole		B	72	6,648.0	6,666.0	5/17/2007				
CODELL, Original Hole			48	6,821.0	6,833.0	4/26/2007				
Stimulation Intervals										
Zone		Start Date		Top (ftKB)		Btm (ftKB)				
NIOBRARA, Original Hole		5/17/2007		6,540.0		6,666.0				
CODELL, Original Hole		5/17/2007		6,821.0		6,833.0				
Other In Hole										
Run Date	Des		Make	OD (in)	Top (ftKB)	Btm (ftKB)				
Logs										
Date		Type				Depth Top (MD) (ftKB)	Btm (ftKB)			
4/19/2007		COMPENSATED DENSITY				2,740	7,050.0			
4/19/2007		INDUCTION				494	7,070.0			
4/26/2007		CBL/CCL/GR				1,800	7,011.0			
Plug Back Total Depths										
Date		Type		Com			PBTD (ftKB)			
4/26/2007		FILL		DEPTH LOGGER ON CBL			7,013			
8/22/2007		FILL		CLEAN OUT TO LAND TUBING			7,014			