

Location Name: STATE WILDLIFE 32-16, API #: 071-07038, Insp. #:695107797



PHOTO 1: WELL SIGN



**PHOTO 2: ORIGINAL WELL LOCATION**

WGS84  
±16ft

37.26092, -104.78264

ft  
±11ft

7603

°M  
±10

NW343



Colorado Oil & Gas Conservation commission  
© 24-Mar-23 09:49:56



**PHOTO 4: ORIGINAL WELLHEAD AND EQUIPMENT**

WGS84  
±16ft

37.26082, -104.78257

ft  
±11ft

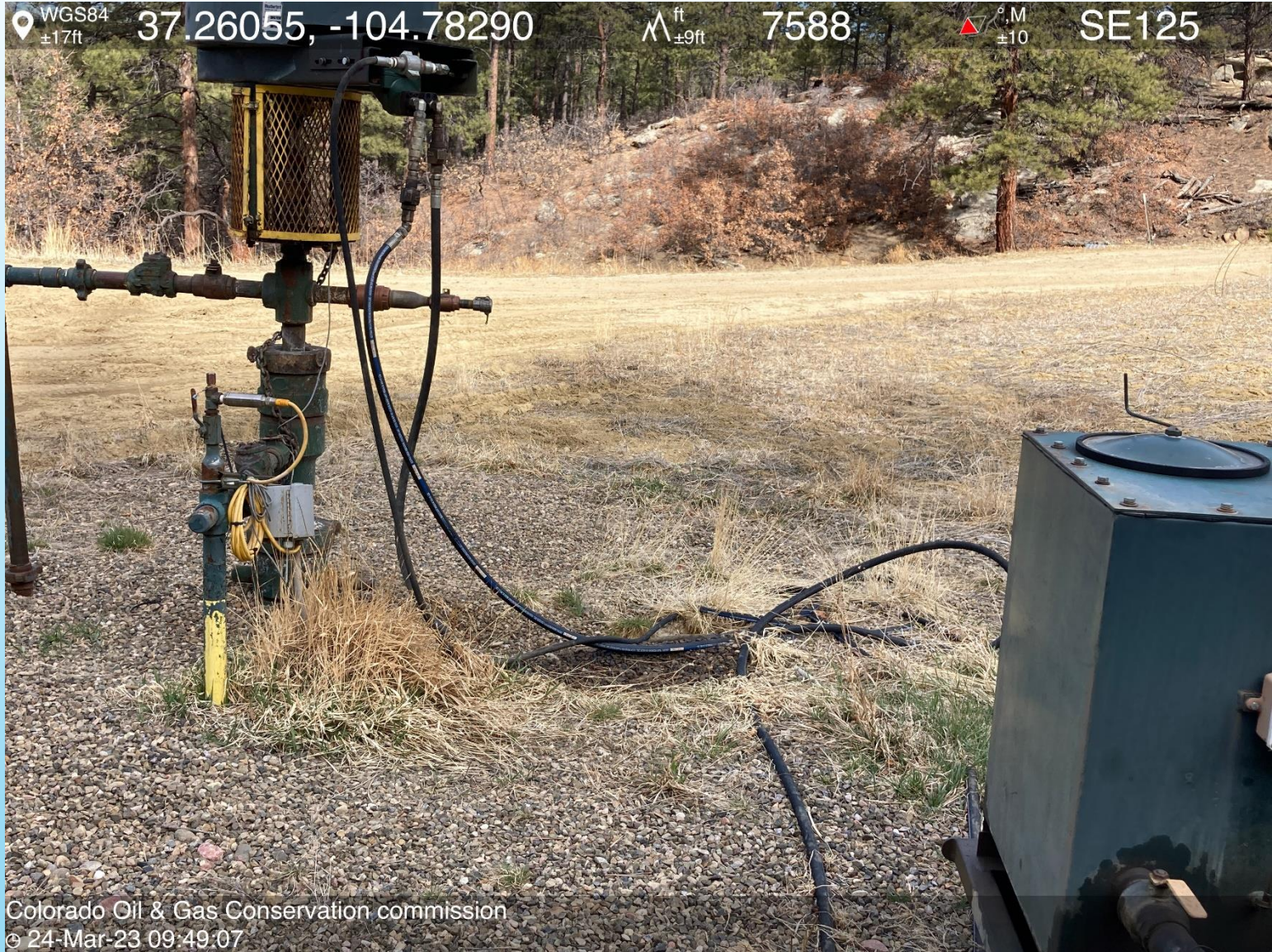
7603

°M  
±10

NW311



Colorado Oil & Gas Conservation commission  
© 24-Mar-23 09:50:27



WGS84  
±16ft

37.26073, -104.78250

ft  
±11ft

7609

°M  
±14

S191



Colorado Oil & Gas Conservation commission  
© 24-Mar-23 09:51:02



Colorado Oil & Gas Conservation commission  
© 24-Mar-23 09:49:00

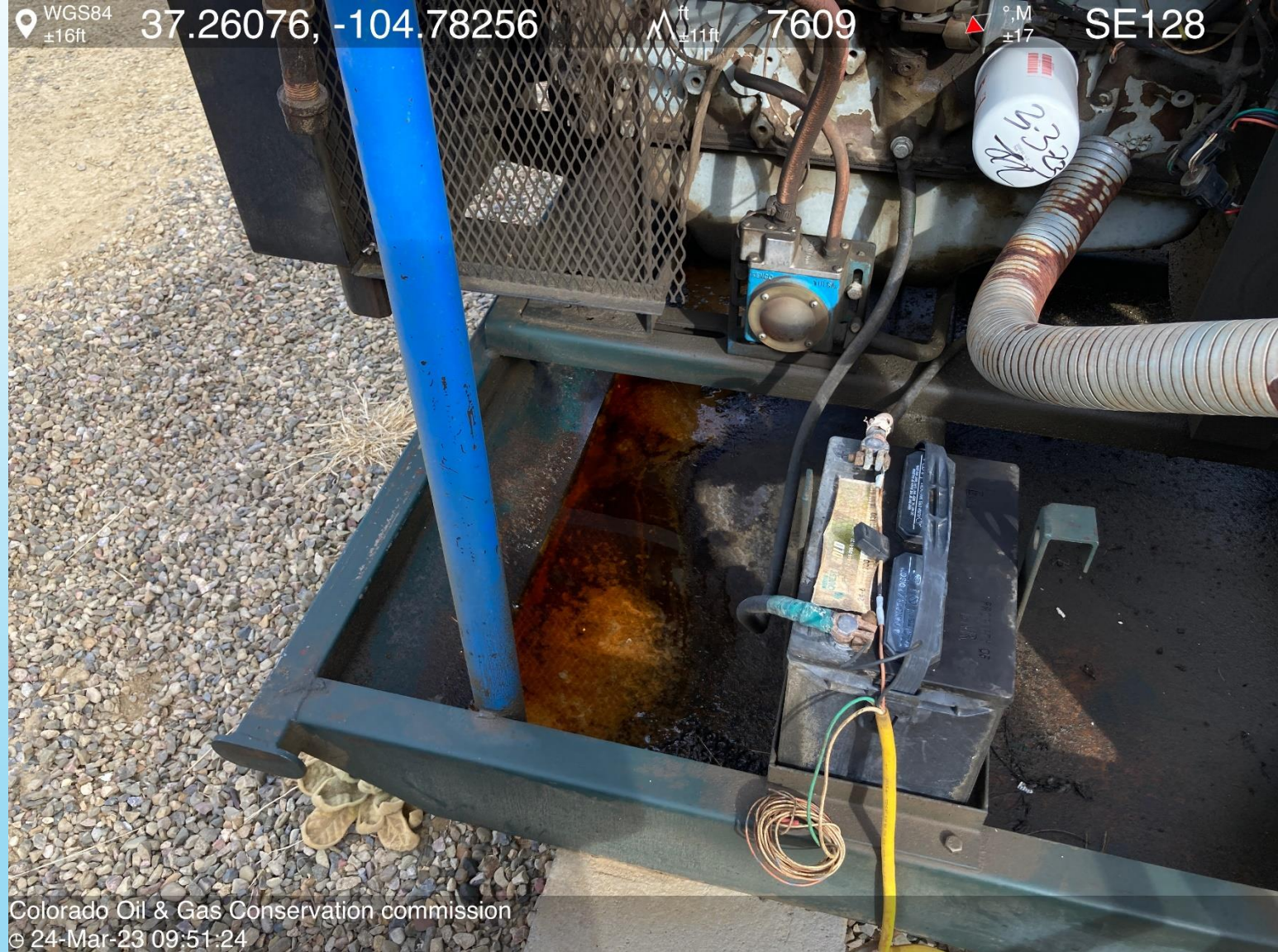
WGS84  
±16ft

37.26076, -104.78256

ft  
±11ft 7609

M  
±17

SE128



Colorado Oil & Gas Conservation commission  
© 24-Mar-23 09:51:24

WGS84  
±16ft

37.26073, -104.78250

ft  
±11ft 7601

°M  
±14

NW299



Colorado Oil & Gas Conservation Commission  
© 24-Mar-23 09:50:51