

Inspection Photos

Location Name: TEP ROCKY MOUNTAIN LLC CLOUGH 31-23H Pad

Location ID: 323919



Photo # 3108 From entrance to location



Photo # 3109 From entrance to location

Inspection Photos

Location Name: TEP ROCKY MOUNTAIN LLC CLOUGH 31-23H Pad

Location ID: 323919



Mar 24, 2023 at 10:24:45 AM
CO

Photo # 3110 Location



Mar 24, 2023 at 10:25:17 AM
CO

Photo # 3111 Location



COLORADO
Oil & Gas Conservation
Commission
Department of Natural Resources

Inspection Photos

Location Name: TEP ROCKY MOUNTAIN LLC CLOUGH 31-23H Pad

Location ID: 323919



Photo # 3112 Location



Photo # 3116 Open ended load line



Inspection Photos

Location Name: TEP ROCKY MOUNTAIN LLC CLOUGH 31-23H Pad

Location ID: 323919

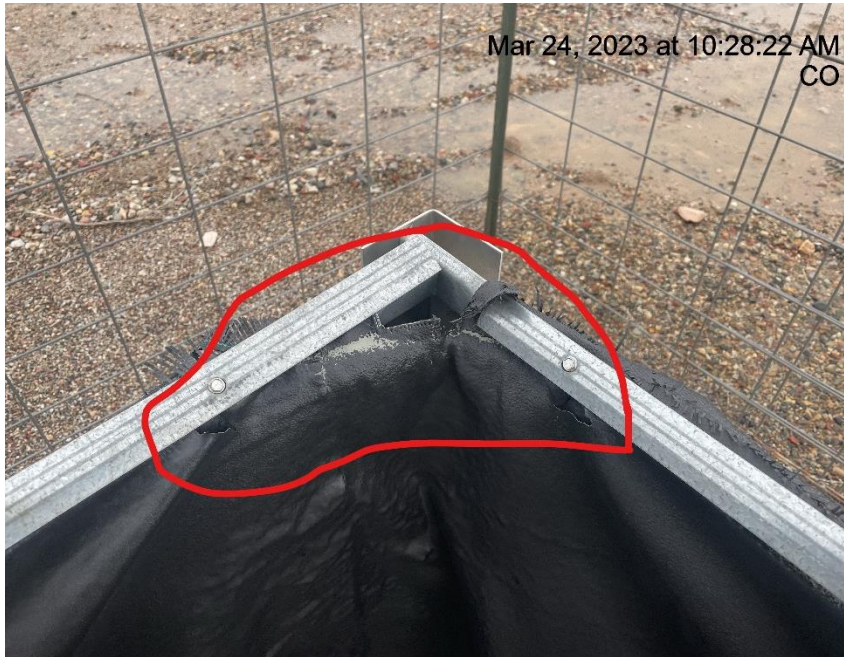


Photo # 3119 Containment needs maintenance

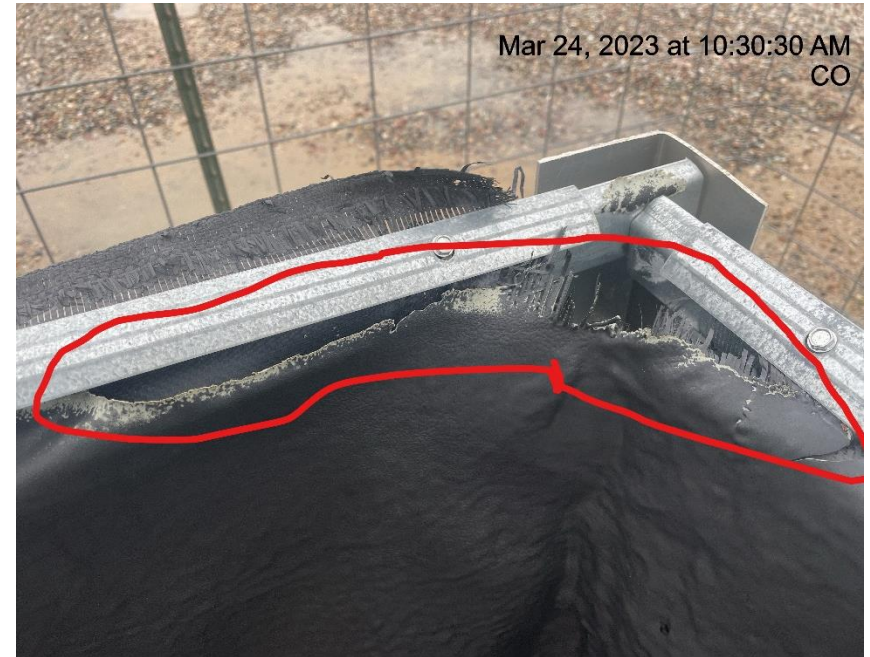


Photo # 3120 Containment needs maintenance



Inspection Photos

Location Name: TEP ROCKY MOUNTAIN LLC CLOUGH 31-23H Pad

Location ID: 323919



Photo # 3121 Containment needs maintenance



Photo # 3124 Meter calibration info not conspicuously posted



Inspection Photos

Location Name: TEP ROCKY MOUNTAIN LLC CLOUGH 31-23H Pad

Location ID: 323919



Photo # 3127 Rill erosion/transport of sediment off location location (south side of pad)



Photo # 3128 Rill erosion/transport of sediment off location (south side of pad)

Inspection Photos

Location Name: TEP ROCKY MOUNTAIN LLC CLOUGH 31-23H Pad

Location ID: 323919



Photo # 3129 Tunnel & Rill erosion on location (east side of pad)



Photo # 3132 Tunnel erosion (east side of pad)

Inspection Photos

Location Name: TEP ROCKY MOUNTAIN LLC CLOUGH 31-23H Pad

Location ID: 323919



Photo # 3133 Tunnel erosion through berm (east side of pad)



Photo # 3134 Tunnel erosion through berm (east side of pad)

Inspection Photos

Location Name: TEP ROCKY MOUNTAIN LLC CLOUGH 31-23H Pad

Location ID: 323919



Photo # 3135 Tunnel erosion through berm & transport of sediment off location (east side of pad)



Photo # 3137 Tunnel erosion through berm & transport of sediment off location (east side of pad)

Inspection Photos

Location Name: TEP ROCKY MOUNTAIN LLC CLOUGH 31-23H Pad

Location ID: 323919



Photo # 3138 Tunnel erosion



Photo # 3139 Tunnel erosion through berm & transport of sediment off location (east side of pad)

Inspection Photos

Location Name: TEP ROCKY MOUNTAIN LLC CLOUGH 31-23H Pad

Location ID: 323919



Photo # 3140 Tunnel erosion through berm (east side of pad)



Photo # 3141 Tunnel erosion through berm & transport of sediment off location (east side of pad)

Inspection Photos

Location Name: TEP ROCKY MOUNTAIN LLC CLOUGH 31-23H Pad

Location ID: 323919



Photo # 3146 Tunnel erosion through berm & transport of sediment off location (east side of pad)



Photo # 3147 Sediment Trap needs maintenance (east side of location)

Inspection Photos

Location Name: TEP ROCKY MOUNTAIN LLC CLOUGH 31-23H Pad

Location ID: 323919



Photo # 3149 Sediment Trap needs maintenance (east side of location)



Photo # 3109 Insufficient run on controls/BMP's (Access road & entrance to location)