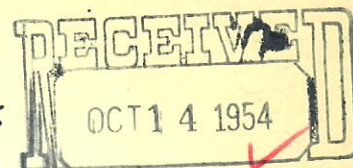
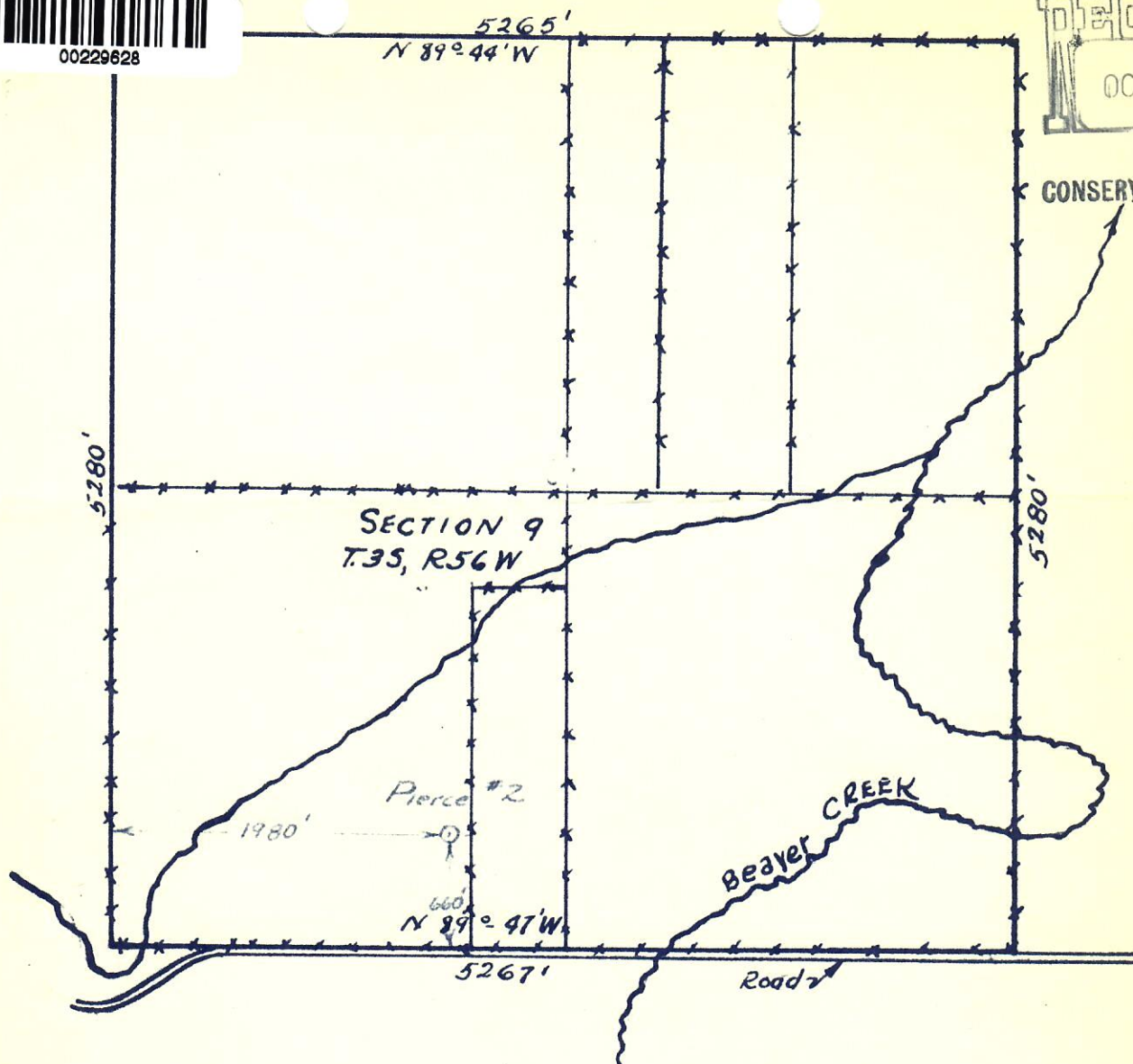




00229628

OIL & GAS
CONSERVATION COMMISSION

This is to certify that the above plat shows the true location of Continental Oil Company's Pierce #2 oil well located in Washington County, Colorado. The ground elevation of this oil well is 4669. The above plat is from a survey dated 9-21-54.

H. D. Haley

H. D. Haley

Colorado Registered Surveyor No. 2148

CONTINENTAL OIL COMPANY
PRODUCTION DEPARTMENTDRAWN H.D.H.
CHECKED _____
APPROVED _____SCALE 1" = 1000'
DATE _____
SHEET _____ OF _____

FILE NO. _____

LOCATION PLAT
OF