

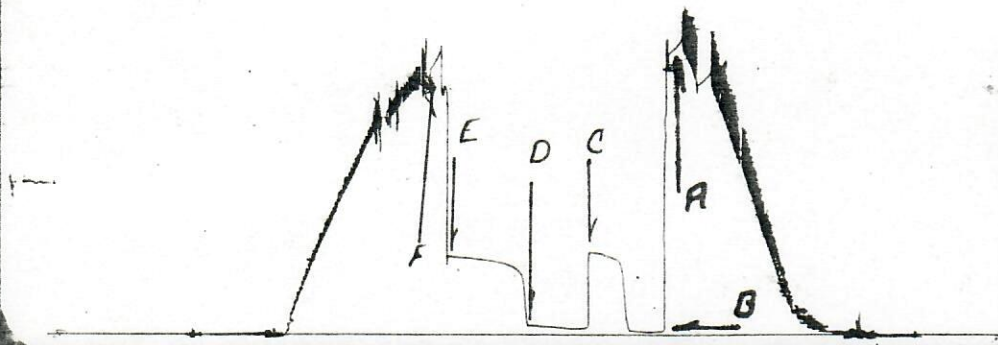


J. W. NYLUND --- HASS # 1---DST #1---TICKET # 930

m

BOTTOM CHART BLANKED OFF IN FLOW STREAM---GAUGE # 11083

A---I HYDRO---	2559	psi	D---F FLOW---	87	psi
B---I FLOW---	32	"	E---FSIP---	713	"
C---ISIP---	750	"	F---F HYDRO---	2454	"

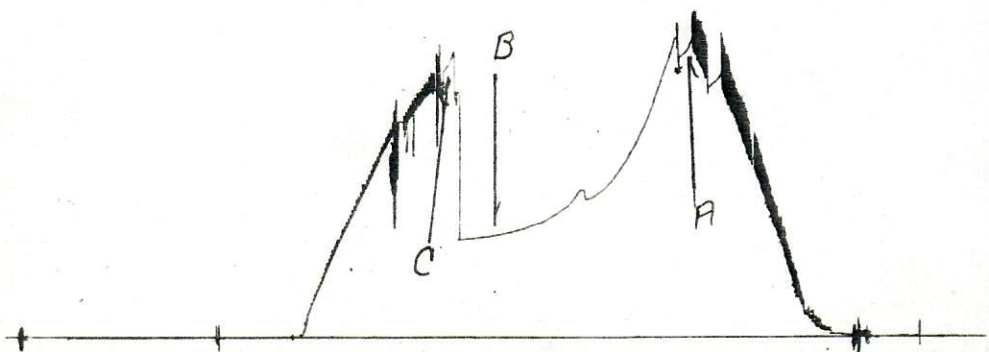


THESE ARE REPRODUCTIONS FROM DST CHARTS

J. W. NYLUND---HASS # 1---DST # 1---TICKET # 930

CHART BLANKED OFF UNDER STRADDLE PACKER---GAUGE # 11082

A---I HYDRO---	2568	psi
B---BLEED OFF UNDER STRADDLE PACKER---	904	psi
C---F HYDRO---	2463	psi



Date 9-20-81		Ticket Number 930		FLUID SAMPLE DATA			
Kind of Job STRADDLE DST				Sampler Pressure 50 P.S.I.G. at Surface			
Tester T. MICHEL Witness MR. NYLUND				Recovery: Cu. Ft. Gas .0845			
Drilling Contractor PEDCO DRILLING				cc. Oil 1000			
				cc. Water			
				cc. Mud 750			
				Tot. Liquid cc. 1750			
EQUIPMENT & HOLE DATA				Gravity 42 ° API @ 60 °F.			
Formation Tested J SAND				Gas/Oil Ratio 13.412 cu. ft./bbl.			
Elevation 4828 Ft.				RESISTIVITY CHLORIDE CONTENT			
Net Productive Interval 7 Ft.				Recovery Water _____ @ _____ °F. _____ ppm			
All Depths Measured From KB				Recovery Mud _____ @ _____ °F. _____ ppm			
Total Depth 5006 Ft.				Recovery Mud Filtrate _____ @ _____ °F. _____ ppm			
Main Hole/Casing Size 7 7/8"				Mud Pit Sample _____ @ _____ °F. _____ ppm			
Drill Collar Length 330 I.D. 2.25"				Mud Pit Sample Filtrate 2.20 @ 92 °F. 2000 ppm			
Drill Pipe Length 4577 I.D. 3.40"				Mud Weight 9.8 vis 72 cp			
Packer Depth(s) 4938-4946-4962 Ft.							
Depth Tester Valve 4923 Ft.							
TYPE AMOUNT		Depth Back Pres. Valve NONE		Surface Choke 3/8"		Bottom Choke 3/4"	
Cushion NONE							
Recovered 30 Feet of OIL 42 API GRAVITY @ 60°							
Recovered 153 Feet of MUD & GAS CUT OIL							
Recovered 486 Feet of GAS IN PIPE							
Recovered _____ Feet of _____							
Remarks: OPEN FOR A 25 MIN INITIAL FLOW, WITH A WEAK BLOW, INCREASING TO A 5" WATER BLOW IN 25 MIN. CLOSED FOR 30 MIN. OPEN FOR A 45 MIN FINAL FLOW, WITH A WEAK BLOW, INCREASING TO BOTTOM OF BUCKET IN 35 MIN. THEN STARTED TO DECREASE AFTER 40 MIN TO 4 1/2" IN 45 MIN. CLOSED FOR 60 MIN FINAL SHUT IN.							
TEMPERATURE		Gauge No. 11083		Gauge No. 11082		TIME	
Depth: _____ Ft.		Depth: 4974 Ft.		Depth: 4994 Ft.			
Hour Clock		12 Hour Clock		12 Hour Clock		Tool Opened 9:00 P.M.	
Blanked Off		YES		YES		Opened 11:40 P.M.	
Actual 139°F.		Pressures		Pressures		Reported _____ Computed _____	
		Field Office		Field Office		Minutes Minutes	
Initial Hydrostatic		2697 2559		2568			
First Period	Flow Initial	35 32		BLEED OFF UNDER			
	Flow Final	35 35		STRADDLE PACKER		25	
	Closed in	747 750		904		30	
Second Period	Flow Initial	71 71					
	Flow Final	89 87				45	
	Closed in	711 713				60	
Final Hydrostatic		2573 2454		2463			

PRODUCTION TEST DATA

Legal Location Sec. - Twp. - Rng. **SEC 15 T 38 R 55W**

Lease Name **HASS**

Well No. **1**

Test No. **1**

4946' - 4962'

Tested Interval

Field Area **WILD CAT**

County

WASHINGTON

State

CO.

J.W. NYLUND

Lease Owner/Company Name

Liberty Testers
12845 Tumbleweed Dr.
Sterling, Colo. 80751
303 - 522 - 7025

SEPT. 20, 1981

J.W. NYLUND
HASS #1 DST #1 TICKET #930
WASHINGTON COUNTY CO.

INTERVAL: 4946' - 4962'

INCREMENTAL READING DATA

RECORDER NO. 11083 @ 4974'

Initial Flow (25 min)
(min) Pressure (psi)

0	32
25	35

Initial Shut-in (30 min)

(2 min-intervals)

0	35
2	99
4	313
6	601
8	661
10	667
12	697
14	708
16	715
18	724
20	735
22	740
24	743
26	745
28	748
30	750

Final Flow (45 min)
(min) Pressure (psi)

0	71
45	87

Final Shut-in (30 min)

(4 min intervals)

0	87
4	525
8	594
12	622
16	640
20	654
24	663
28	672
32	679
36	686
40	693
44	699
48	703
52	705
56	708
60	713