

Exploration and Production

Proposed WBD - Williams Fork and Iles Injection

Uinta 0

GRRV 858
GRRV A Groove 962
GRRV B Groove 1,120

Dissolution Zone 1,447
Garden Gulch 2,038

Upper Wasatch 2,652

Proposed TOC 3,977
G Sand 4,177

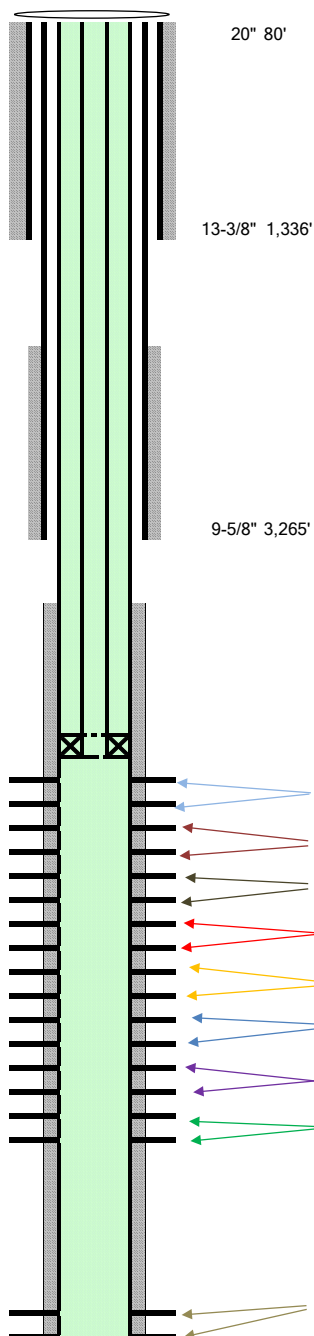
FRUN 4,572

Williams Fork 5,722
OCRK 5,722
Top of Disposal 5,722

U_Mesaverde 6,788

KMVGAS 7,273

RLNS 8,773
CZZT 8,843



Well Name **Federal RG 943-24-299D**
Location **SE1/4 NW1/4, SEC. 24, T2S., R99W. of the 6th. P.M.**
State **Colorado**
County **Rio Blanco**
API **05-103-XXXXX**
KB **30'**
Footages **TBD**

Cond Casing	80'	20"	78.6# X42 ERW
Cement	134sx	15.0 ppg	
Surf Casing	1,336'	13-3/8"	54.5# J55 BTC
Lead Cement	436 sx	12.3 ppg	2.34 yield 13.4 gal/sk
Intermediate Casing	3,265	9-5/8"	36.0# J55 BTC
Lead Cement	72 sx	12.3 ppg	2.4 yield 13.3 gal/sk
Tail Cement	82 sx	12.8 ppg	2.1 yield 11.3 gal/sk
Prod Casing	9,773'	5 1/2"	17# HCP-110 BTC
Lead Cement	215 sx	12.5 ppg	2.00 yield 12.19 gal/sk
Tail Cement	646 sx	13.5 ppg	1.83 yield 9.11 gal/sk
Tubing	5,670'	2-7/8" OD	6.5# N-80 EUE
On/Off Tool	5,671'	2.31" Drift	6.5# N-80 EUE
Packer**	5,672'	5-1/2" x 2-7/8"	4 1/2" Drift
Tubing Pup Joint	5,678'	2.347" Drift	6.5# N-80 EUE
Profile Nipple	5,679'	2-7/8" OD	6.5# N-80 EUE
Re-entry Guide	5,681'	2.347" Drift	6.5# N-80 EUE

**The set depth of the packer is subject to change post well construction.

Injection Intervals	Estimated Top Perf	Estimated Bottom Perf	Shots	PHZ	Diameter
Stage 13	5,722'	5,914'	24	120 deg	0.4"
Stage 12	5,915'	6,107'	24	120 deg	0.4"
Stage 11	6,108'	6,300'	24	120 deg	0.4"
Stage 10	6,301'	6,493'	24	120 deg	0.4"
Stage 9	6,494'	6,686'	24	120 deg	0.4"
Stage 8	6,687'	6,879'	24	120 deg	0.4"
Stage 7	6,880'	7,072'	24	120 deg	0.4"
Stage 6	7,073'	7,265'	24	120 deg	0.4"
Stage 5	8,773'	8,973'	24	120 deg	0.4"