

# Exploration and Production

## Proposed WBD - Williams Fork and Iles Injection

Uinta 0

GRRV 858  
GRRV A Groove 960  
GRRV B Groove 1,113

Dissolution Zone 1,420  
Garden Gulch 1,932

Upper Wasatch 2,444

Proposed TOC 3,523  
G Sand 3,723

FRUN 4,081

Williams Fork 5,204  
OCRK 5,204  
Top of Disposal 5,204

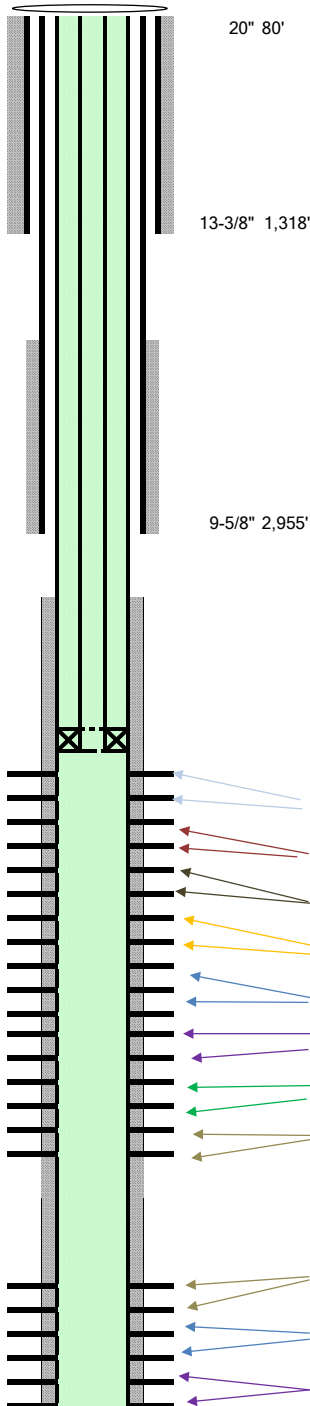
U\_Mesaverde 6,271

KMV GAS 6,756

RLNS 8,246  
CZZT 8,316

CRCN 8,496

SEGO 8,846



Well Name	Federal RG 921-24-299D			
Location	SE1/4 NW1/4, SEC. 24, T2S., R99W. of the 6th. P.M.			
State	Colorado			
County	Rio Blanco			
API	05-103-XXXXX			
KB	30'			
Footages	TBD			
Cond Casing	80'	20"	78.6# X42 ERW	
Cement	134sx	15.0 ppg		
Surf Casing	1,318'	13-3/8"	54.5# J55 BTC	
Lead Cement	430 sx	12.3 ppg	2.34 yield	13.4 gal/sk
Intermediate Casing	2,955'	9-5/8"	36.0# J55 BTC	
Lead Cement	72 sx	12.3 ppg	2.4 yield	13.3 gal/sk
Tail Cement	82 sx	12.8 ppg	2.1 yield	11.3 gal/sk
Prod Casing	9,246'	5 1/2"	17# HCP-110 BTC	
Lead Cement	206 sx	12.5 ppg	2.00 yield	12.19 gal/sk
Tail Cement	644 sx	13.5 ppg	1.83 yield	9.11 gal/sk
Tubing	5,152'	2-7/8" OD	6.5# N-80 EUE	
On/Off Tool	5,153'	2.31" Drift	6.5# N-80 EUE	
Packer**	5,154'	5-1/2" x 2-7/8"	4 1/2" Drift	
Tubing Pup Joint	5,160'	2.347" Drift	6.5# N-80 EUE	
Profile Nipple	5,161'	2-7/8" OD	6.5# N-80 EUE	
Re-entry Guide	5,163'	2.347" Drift	6.5# N-80 EUE	
**The set depth of the packer is subject to change post well construction.				

Injection Intervals	Estimated Top Perf	Estimated Bottom Perf	Shots	PHZ	Diameter
Stage 13	5,204'	5,394'	24	120 deg	0.4"
Stage 12	5,395'	5,585'	24	120 deg	0.4"
Stage 11	5,586'	5,776'	24	120 deg	0.4"
Stage 10	5,777'	5,967'	24	120 deg	0.4"
Stage 9	5,968'	6,158'	24	120 deg	0.4"
Stage 8	6,159'	6,349'	24	120 deg	0.4"
Stage 7	6,350'	6,540'	24	120 deg	0.4"
Stage 6	6,541'	6,731'	24	120 deg	0.4"
Stage 5	8,246'	8,446'	24	120 deg	0.4"
Stage 4	8,447'	8,647'	24	120 deg	0.4"
Stage 3	8,648'	8,848'	24	120 deg	0.4"