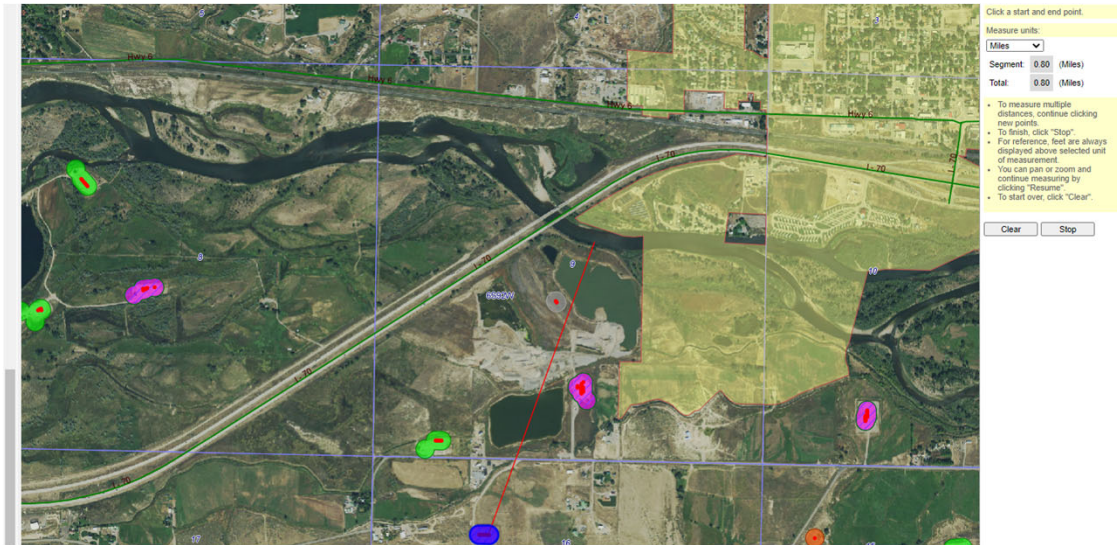


# Storm Water Management and Erosion control Location Name: McPhearson A Location #: 335539

- ☒ Rule 411a Surface Water External Buffer
- ☒ Brighton 1-189
- ☒ Reservoirs (INT)
- ☒ Exception Zone (INT)
- ☒ Groundwater Sampling Zone (INT)
- ☒ BWP Buffer Zone (INT)
- ☒ Brighton 1-189 PWS Area
- ☒ Wildland Fires (Updated Nightly) (INT)
- ☒ WFIGS Current Incidents (Points)
- ☒ WFIGS Current Perimeters
- ☒ WFIGS 2021 Perimeters To Date
- ☒ Floodplains (FEMA)
- ☒ Environmental Sites
- ☒ Air Quality (COPHE)
- ☒ Section, Township, & Range (PLSS)
- ☒ Local Government Designees (LGDs)
- ☒ Parks & Wildlife (CPW)
- ☒ National Wetlands Inventory (USFWS) (INT)
- ☒ State Land (SLB)
- ☒ Tribal Lands
- ☒ Federal Land (BLM)
- ☒ Master Title Plats (BLM) (INT)
- ☒ Surface Features
- ☒ Address Points - 2018 (INT)
- ☒ Child Care Facilities (11/17/17) (INT)
- ☒ Places
- ☒ Parcels
- ☒ Child Care Facilities Parcels (11/17/17) (INT)
- ☒ Building Footprints - 2018 (INT)
- ☒ School\_Districts
- ☒ Airports
- ☒ Surface Owner
- ☒ Cities
- ☒ Counties
- ☒ Soil Survey (NRCS)
- ☒ Mining
- ☒ Geology
- ☒ Topography
- ☒ Aerial Imagery
- ☒ 1990s (Black & White) Image Dates
- ☒ 1990s (Black & White)



Click a start and end point.

Measure units:  
 Miles

Segment: 0.00 (Miles)  
 Total: 0.00 (Miles)

- To measure multiple distances, continue clicking new points.
- To finish, click "Stop".
- For reference, feet are always displayed above selected unit of measurement.
- You can pan or zoom and continue measuring by clicking "Resume".
- To start over, click "Clear".

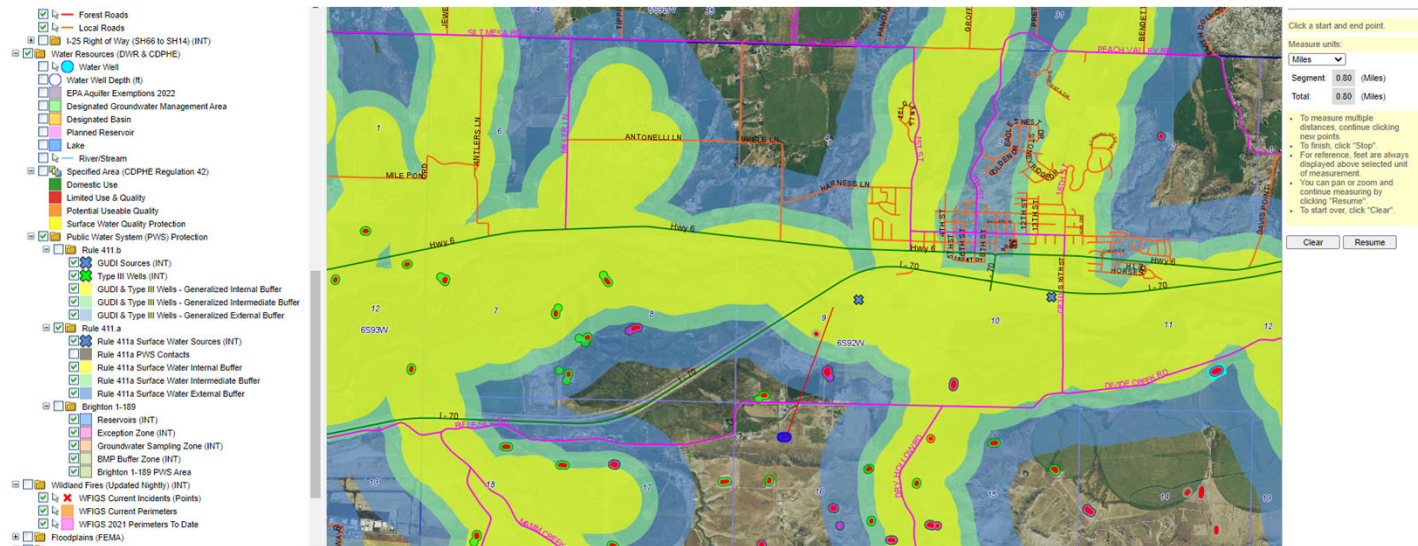
Clear Stop

Location Overview : Location is approximately 8/10ths of a mile from the Colorado river.



**COLORADO**  
 Oil & Gas Conservation  
 Commission  
 Department of Natural Resources

# Storm Water Management and Erosion control Location Name: McPhearson A Location #: 335539



Location Overview : Location is with close proximity to the 411 Public Water System Protection



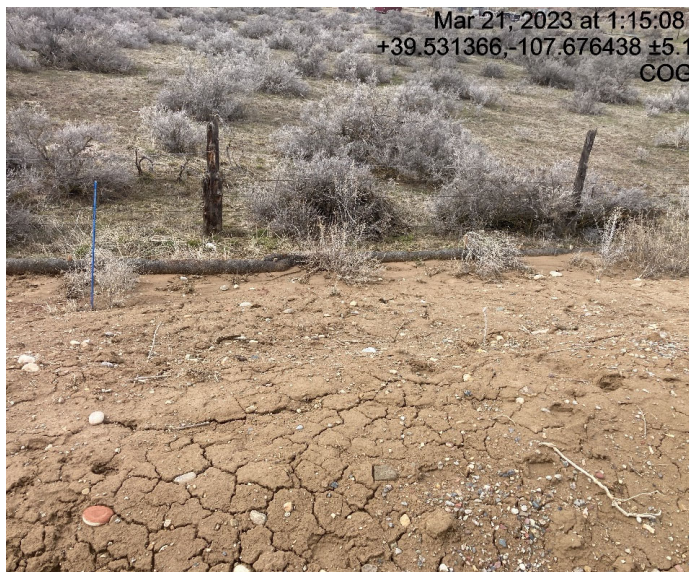
**COLORADO**  
 Oil & Gas Conservation  
 Commission  
 Department of Natural Resources



## Storm water Management and Erosion control

Location Name: McPhearson A

Location #: 335539



Fill slope shows lack of stabilization



Fill slope shows lack of stabilization



**COLORADO**  
Oil & Gas Conservation  
Commission  
Department of Natural Resources

## Storm water Management and Erosion control

Location Name: McPhearson A

Location #: 335539



Fill slope shows lack of stabilization



Fill slope shows lack of stabilization



**COLORADO**  
Oil & Gas Conservation  
Commission  
Department of Natural Resources



## Storm water Management and Erosion control

Location Name: McPhearson A

Location #: 335539



Erosion is undermining location berm coming out of fill slope



Erosion is undermining location berm coming out of fill slope



**COLORADO**  
Oil & Gas Conservation  
Commission  
Department of Natural Resources

## Storm water Management and Erosion control

Location Name: McPhearson A

Location #: 335539



Erosion is undermining location berm coming out of fill slope



Cut slope shows signs of erosion, Blankets have been installed in areas.



**COLORADO**  
Oil & Gas Conservation  
Commission  
Department of Natural Resources



## Storm water Management and Erosion control

Location Name: McPhearson A

Location #: 335539



Erosion under waddles



Sediment trap full of weeds



**COLORADO**  
Oil & Gas Conservation  
Commission  
Department of Natural Resources

## Storm water Management and Erosion control

Location Name: McPhearson A

Location #: 335539



Sediment migration is choking out vegetation



Sediment migration is choking out vegetation



**COLORADO**  
Oil & Gas Conservation  
Commission  
Department of Natural Resources



## Storm water Management and Erosion control

Location Name: McPhearson A

Location #: 335539



Sediment migration is choking out vegetation



Sediment migration is choking out vegetation



**COLORADO**  
Oil & Gas Conservation  
Commission  
Department of Natural Resources

**Storm water Management and Erosion control**  
**Access Road/Assoc. Location Name: McPhearson A**  
**Access Road/Assoc. Location #: 335539**



**Location entrance from access road**



**Access road**



**COLORADO**  
Oil & Gas Conservation  
Commission  
Department of Natural Resources



**Storm water Management and Erosion control**  
**Access Road/Assoc. Location Name: McPhearson A**  
**Access Road/Assoc. Location #: 335539**



**Multiple areas of erosion next to access road with BMP's failing**



**Multiple areas of erosion next to access road with BMP's failing**



**COLORADO**  
Oil & Gas Conservation  
Commission  
Department of Natural Resources

**Storm water Management and Erosion control**  
**Access Road/Assoc. Location Name: McPhearson A**  
**Access Road/Assoc. Location #: 335539**



**Sediment migration choking out vegetation**



**BMP's failing**



**COLORADO**  
Oil & Gas Conservation  
Commission  
Department of Natural Resources



**Storm water Management and Erosion control**  
**Access Road/Assoc. Location Name: McPhearson A**  
**Access Road/Assoc. Location #: 335539**



**Sediment migration choking out vegetation**



**Sediment migration choking out vegetation has left location on adjacent property.**



**Storm water Management and Erosion control**  
**Access Road/Assoc. Location Name: McPhearson A**  
**Access Road/Assoc. Location #: 335539**



**BMP's failing**



**BMP's failing**

