



Lat40°, Inc. 6250 W. 10th Street, Unit 2, Greeley, CO 970-515-5294

LOCATION PICTURES

TRIPPETT 3N66W3 1-48 PAD
PDC ENERGY

Q: E2SW4, W2SE4
SECTION: 3
TOWNSHIP: 3N
RANGE: 66W
6TH. P.M.
WELD COUNTY, CO
DATE: 4/15/2022



VIEW 1 — NORTH



VIEW 2 — NORTHEAST



VIEW 3 — EAST



VIEW 4 — SOUTHEAST



VIEW 5 — SOUTH



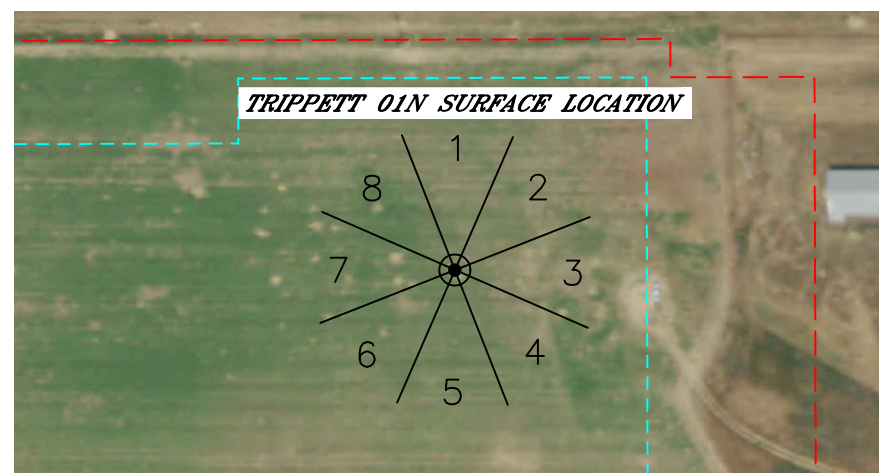
VIEW 6 — SOUTHWEST



VIEW 7 — WEST



VIEW 8 — NORTHWEST



FIELD OF VIEW DIAGRAM
N.T.S.

DATE: 6/17/2022
PROJECT#: 2021414