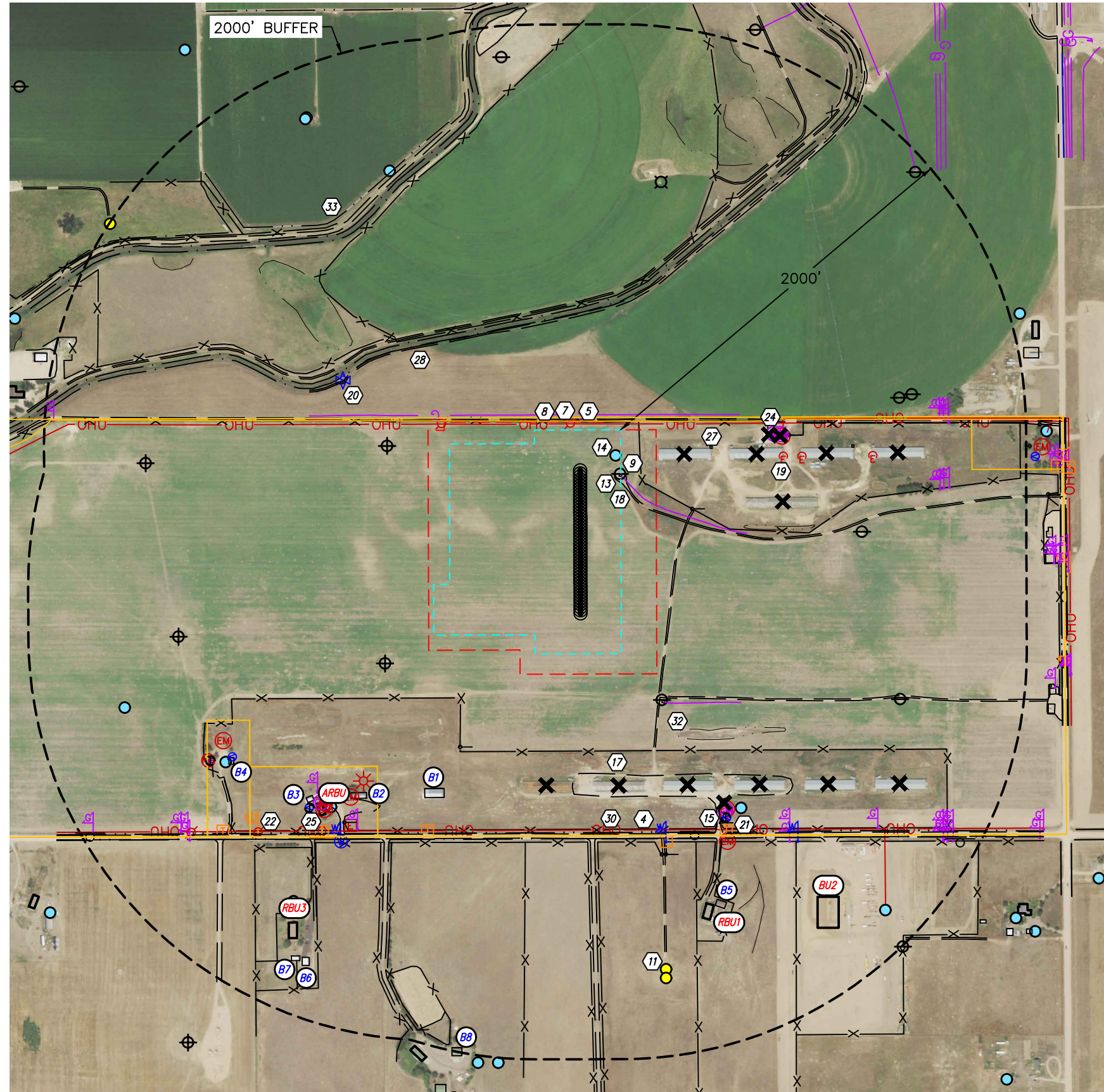


LOCATION DRAWING

TRIPPETT 3N66W3 1-48 PAD

PDC ENERGY

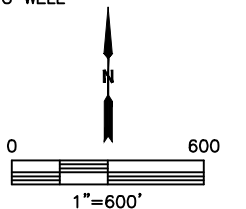
Q: E2SW4, W2SE4
SECTION: 3
TOWNSHIP: 3N
RANGE: 66W
6TH. P.M.
WELD COUNTY, CO

LOCATION DRAWING:
(MEASURED FROM EDGE OF WORKING PAD SURFACE)
SEE ATTACHED TABLE

LEGEND

—	SURFACE PROPERTY	☐	TELEPHONE PEDESTAL	●	PRODUCING OIL & GAS WELL
- - -	WORKING PAD SURFACE	⌋	TELEPHONE MARKER	⊗	SHUT IN OIL & GAS WELL
—	OIL AND GAS LOCATION	FO	FIBER OPTIC MARKER	⊗	TEMPORARY ABANDONED OIL & GAS WELL
W	WATER LINE	FO	FIBER OPTIC PEDESTAL	◆	INJECTION WELL
G	GAS LINE	GM	GAS MARKER	⊗	PLUGGED AND ABANDONED OIL & GAS WELL
T	TELEPHONE LINE	GM	GAS METER	⊗	DRILLED AND ABANDONED OIL & GAS WELL
E	UNDERGROUND ELECTRIC	E	ELECTRIC PEDESTAL	★	DRILLING OIL & GAS WELL
OHU	OVERHEAD UTILITY	E	ELECTRIC SERVICE	●	WATER WELL (GIS DATA)
FO	FIBER OPTIC LINE	P	POWER POLE	●	WATER WELL (FIELD LOCATED)
×	FENCE	M	UNKNOWN MANHOLE	W	WATER MARKER
●	PROPOSED WELL	LP	LIGHT POLE	W	WATER VALVE
X	ID DESIGNATION	EM	ELECTRIC METER	W	AIR VALVE
B	BUILDING	G	GUY WIRE	W	SPIGOT
BU	BUILDING UNIT	G	GATE	W	MONITORING WELL
RBUI	RESIDENTIAL BUILDING UNIT	G	GUY WIRE		
ARBU	ABANDONED RESIDENTIAL BUILDING UNIT (OMITTED FROM MEASUREMENTS AND TOTALS)	G	GATE		
×	BUILDING REMOVED OR TO BE REMOVED	G	GUY WIRE		
	DATA SOURCE: COGCC	G	GATE		

NOTE:
1. VISIBLE IMPROVEMENTS SHOWN AND LISTED HEREON THAT ARE LYING OUTSIDE THE SURFACE PROPERTY MAY HAVE BEEN OBTAINED FROM THE AERIAL PHOTO AND OTHER PUBLICLY AVAILABLE DATA. THE ACCURACY AND COMPLETENESS OF SAID IMPROVEMENTS MAY NOT HAVE BEEN VERIFIED BY LAT40, INC. EXISTING CONDITIONS MAY DIFFER FROM WHAT IS SHOWN.





Lat40°, Inc. 6250 W. 10th Street, Unit 2, Greeley, CO 970-515-5294

LOCATION DRAWING
TRIPPETT 3N66W3 1-48 PAD
PDC ENERGY

Q: E2SW4, W2SE4
SECTION: 3
TOWNSHIP: 3N
RANGE: 66W
6TH. P.M.
WELD COUNTY, CO

ID	IMPROVEMENT	DISTANCES/BEARING (MEASURED FROM WORKING PAD SURFACE)
B	BUILDINGS	B1 757' S, B2 845' SW, B3 993' SW, B4 1157' SW, B5 1300' SE, B6 1705' SW, B7 1715' SW, B8 1976' SW
BU/RBU	BUILDING UNIT/RESIDENTIAL BUILDING UNITS	RBU1 1301' SE, BU2 1541' SE, RBU3 1569' SW
1	HIGH OCCUPANCY BUILDING UNITS	NA
2	SCHOOL FACILITY	NA
3	DESIGNATED OUTSIDE ACTIVITY AREA	NA
4	PUBLIC ROAD	887' S
5	ABOVE GROUND UTILITY	30' N, 802' E, 931' SE, 1563' SE
6	RAILROAD	NA
7	PROPERTY LINE	44' N, 705' SW, 897' S, 1001' SW, 1773' E
8	FENCES	39' N, 91' E, 311' S, 556' NW, 592' NW, 929' S, 929' S, 930' S, 998' SE, 1056' SW, 1061' NE, 1209' SW, 1221' NW, 1265' SE, 1450' NW, 1776' NW
9	PIPELINES/PIPELINE MARKERS/FLOWLINE	4' E, 74' N, 320' SE, 508' NW, 961' SW, 1025' SW, 1196' SE, 1244' SE, 1530' SE, 1555' SW, 1573' SW, 1574' E, 1576' E, 1582' SW, 1593' E, 1594' E, 1618' E, 1618' E, 1621' E, 1810' SE, 1828' SE, 1832' SE, 1838' SE, 1852' SE, 1856' SE, 1879' SE, 1939' NE, 1943' SW, 1955' NW
10	MINES	NA
11	PRODUCING/DRILLING OIL AND GAS WELLS, EXISTING WORKING PAD SURFACE	1573' SE, 1615' SE, 1866' NW, 1994' NW
12	INJECTION WELLS AND FACILITIES	NA
13	PLUGGED/ABANDONED/SHUT IN OIL AND GAS WELLS	1-INSIDE LOCATION, 279' SW, 304' SE, 307' W, 1189' E, 1238' NE, 1259' W, 1383' NE, 1394' SE, 1447' NE, 1541' NW, 1846' NW, 1931' NE
14	WATER WELLS - GIS DATA	1-INSIDE LOCATION, 963' SE, 987' SW, 1202' SW, 1379' NW, 1485' SW, 1566' SW, 1754' NW, 1816' SE
15	WATER WELLS - SURVEYED LOCATION	958' SE, 1051' SW, 1265' SW
16	SEWER/SEPTIC MANHOLES	NA
17	PRIVATE ROAD	51' S, 504' NW, 569' NW, 592' S, 882' SW, 911' S, 935' SE, 1021' SE, 1030' SW, 1166' SW, 1184' NW, 1257' SW, 1331' SE, 1443' SW, 1972' NW, 1983' SE
18	EXISTING OIL AND GAS ACCESS	1-INSIDE LOCATION', 215' SE, 283' SE
19	UTILITIES - ELECTRIC	796' E, 800' SW, 802' E, 894' E, 898' SW, 926' SE, 964' SW, 1016' SW, 1026' SW, 1063' SE, 1161' SW, 1244' E
20	UTILITIES - WATER	611' NW, 954' SE, 961' SE, 1050' SW, 1116' SW, 1161' SW, 1265' SW, 1271' SE
21	UTILITIES - TELEPHONE	956' SE, 966' S, 1015' SE, 1103' SW, 1140' SW, 1418' SW
22	UTILITIES - FIBER OPTIC	1303' SW
23	UTILITIES - PROPANE TANK	NA
24	UTILITIES - GAS METER	758' E, 789' E, 927' SE, 996' SW
25	UTILITIES - OTHER	993' SW, 1273' SW
26	BRIDGES	NA
27	MISCELLANEOUS - CONCRETE	440' E, 1140' E
28	MAJOR DITCH/CANAL	506' NW, 1143' NW
29	RIVER	NA
30	BORROW DITCH	882' S, 913' S
31	POND	NA
32	LOW AREA	477' SE, 606' E, 687' NW, 1231' SE, 1394' NE, 1556' NW
33	DITCH	1242' NW, 1495' NW