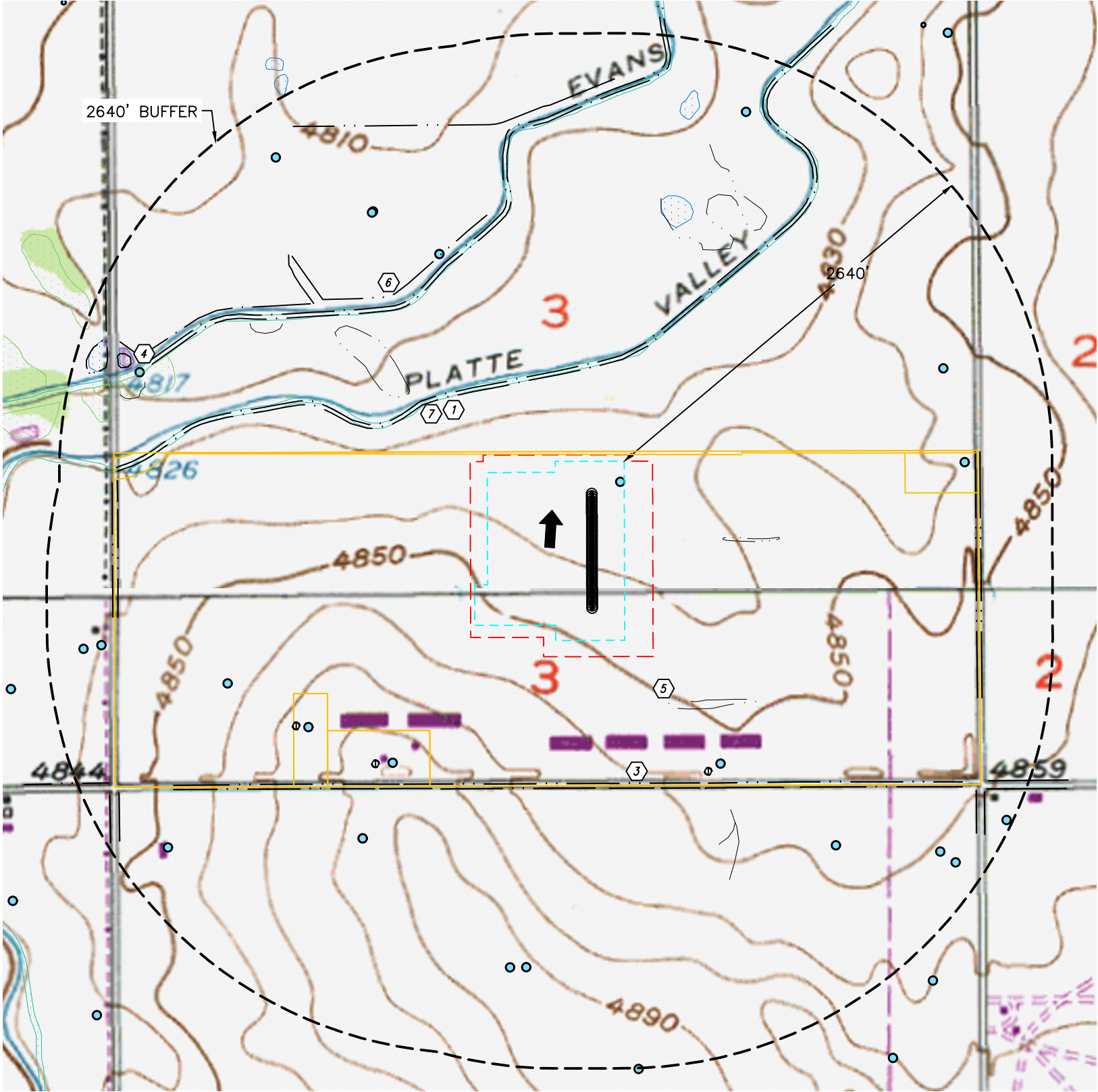




Lat40°, Inc. 6250 W. 10th Street, Unit 2, Greeley, CO 970-515-5294

HYDROLOGY MAP  
TRIPPETT 3N66W3 1-48 PAD  
PDC ENERGY

Q: E2SW4, W2SE4  
SECTION: 3  
TOWNSHIP: 3N  
RANGE: 66W  
6TH. P.M.  
WELD COUNTY, CO



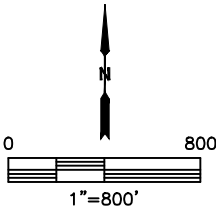
NOTE:  
VISIBLE SURFACE WATER SHOWN AND LISTED HEREON THAT ARE LYING OUTSIDE THE SURFACE PROPERTY MAY HAVE BEEN OBTAINED FROM THE AERIAL PHOTO AND OTHER PUBLICLY AVAILABLE DATA. THE ACCURACY AND COMPLETENESS OF SAID IMPROVEMENTS MAY NOT HAVE BEEN VERIFIED BY LAT40, INC. EXISTING CONDITIONS MAY DIFFER FROM WHAT IS SHOWN.

ID	SURFACE WATER	DISTANCES/BEARING (MEASURED FROM WORKING PAD SURFACE)
1	MAJOR DITCH/CANAL	506' NW, 1143' NW
2	RIVER	NA
3	BORROW DITCH	882'S, 913'S, 2172'E, 2201'E, 2201'W, 2232'W, 2358'SE, 2406'SE, 2409'SE, 2417'SE, 2427'SW, 2458'SW, 2483'SW
4	POND	2298' NW, 2441' NW
5	LOW AREA	477'SE, 606'E, 687' NW, 1231'SE, 1394' NE, 1556' NW, 2177' NW
6	DITCH	1242' NW, 1495' NW, 2113' NW, 2507' NW
7	WETLANDS (USGS WETLANDS MAPPER)	513' NW, 1134' NW, 1477' NE, 2009' NW, 2145' NE, 2282' NW, 2348' NW, 2443' NW
8	MISCELLANEOUS	NA
9	PUBLIC WATER SYSTEM FACILITIES	NA
10	RULE 411 BUFFER	NA
11	SURFACE WATERS THAT ARE 15 STREAM MILES UPSTREAM OF A PUBLIC WATER SYSTEM INTAKE	NO

WORKING PAD SURFACE LOCATED IN FLOOD ZONE X

- LEGEND
- SURFACE PROPERTY
  - WORKING PAD SURFACE
  - OIL AND GAS LOCATION
  - PROPOSED WELL
  - ID DESIGNATION
  - DOWNGRADIENT
  - RIPARIAN
  - FRESHWATER POND
  - RIVERINE
  - FRESHWATER EMERGENT WETLAND
  - FRESHWATER FORESTED SHRUB WETLAND
  - FLOOD ZONE AE
  - FLOOD ZONE X--.2% ANNUAL CHANCE OF FLOOD
  - FLOOD ZONE AE FLOODWAY
  - FLOOD ZONE A
  - FLOOD ZONE A0
  - WATER WELL (FIELD LOCATED)
  - WATER WELL (GIS DATA)

NO SEEP OR SPRING IDENTIFIED WITHIN 1 MILE BUFFER AS MEASURED FROM WORKING PAD SURFACE.



DATA SOURCE: COGCC, CNHP, FEMA, USGS

DATE: 6/17/2022  
PROJECT#: 2021414