



Lat40°, Inc. 6250 W. 10th Street, Unit 2, Greeley, CO 970-515-5294

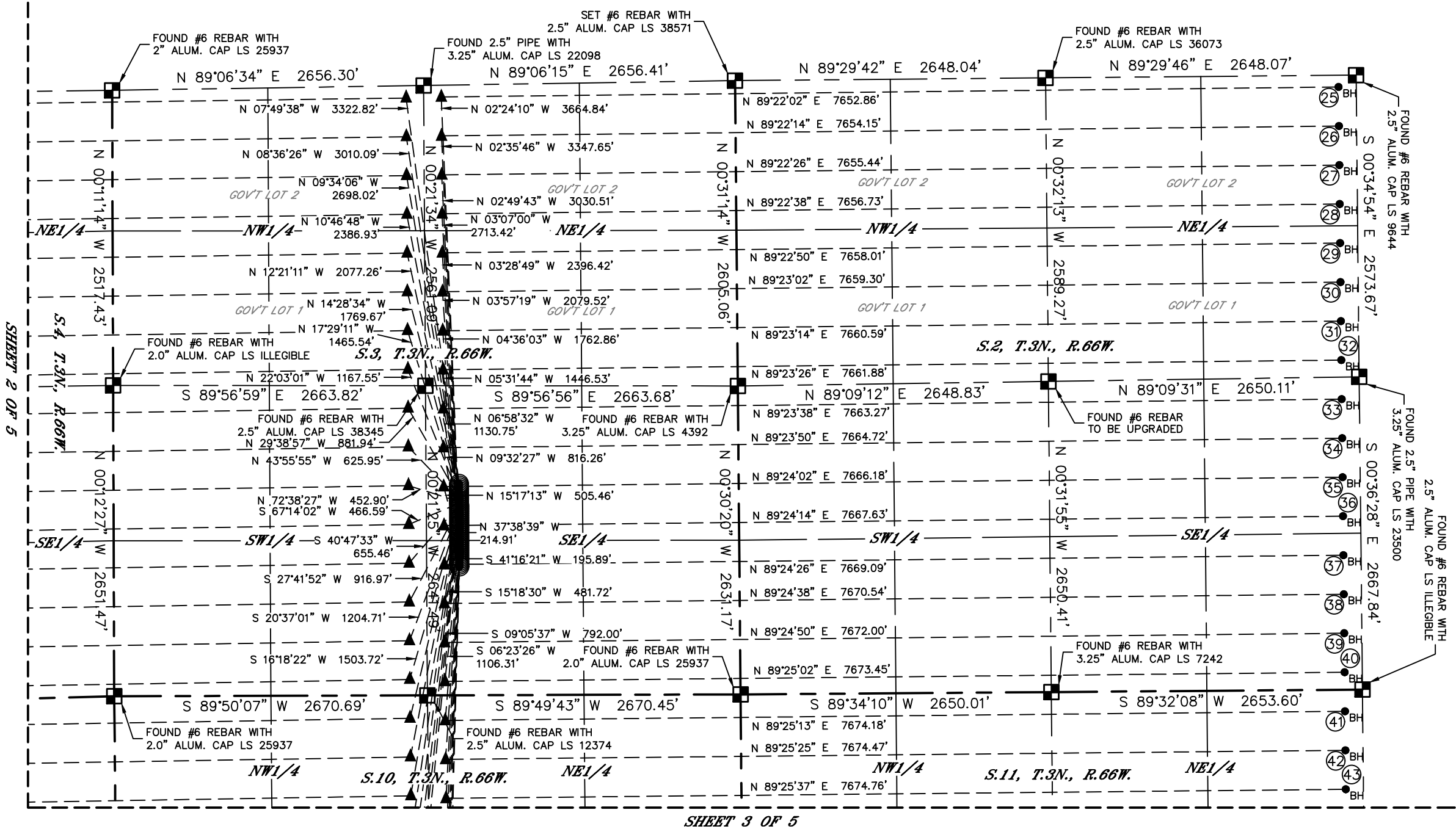
DIRECTIONAL WELL PLAT

TRIPPETT 3N66W3 1-48 PAD

PDC ENERGY

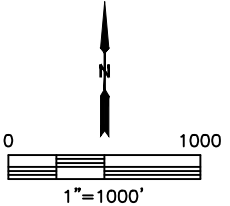
THIS MAP DOES NOT REPRESENT A BOUNDARY SURVEY

Q: E2SW4, W2SE4
SECTION: 3
TOWNSHIP: 3N
RANGE: 66W
6TH. P.M.
WELD COUNTY, CO



- LEGEND
- = ALIQUOT MONUMENT AS DESCRIBED
 - = CALCULATED POSITION
 - = SURFACE HOLE LOCATION (SHL)
 - ▲ = ENTRY POINT LOCATION (EP)
 - ◆ = TOP OF PRODUCTIVE ZONE (PZONE)
 - = BOTTOM HOLE LOCATION (BHL)
 - ⊙ = EXISTING WELL
 - ⊙ = ABANDONED WELL

SEE SHEET 4 OF 5 FOR TABLE





Lat40°, Inc. 6250 W. 10th Street, Unit 2, Greeley, CO 970-515-5294

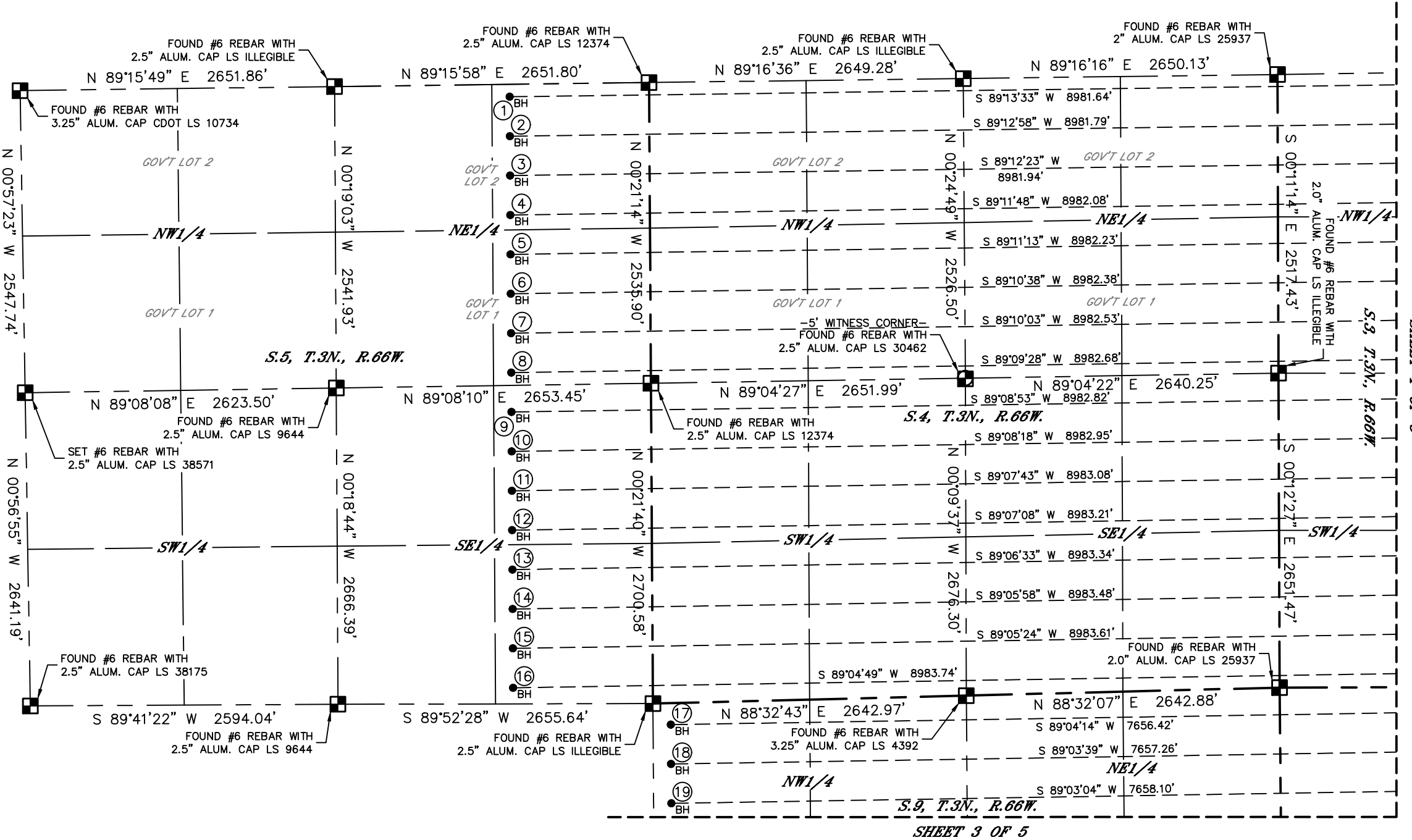
DIRECTIONAL WELL PLAT

TRIPPETT 3N66W3 1-48 PAD

PDC ENERGY

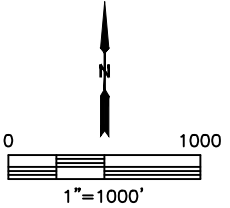
THIS MAP DOES NOT REPRESENT A BOUNDARY SURVEY

Q: E2SW4, W2SE4
SECTION: 3
TOWNSHIP: 3N
RANGE: 66W
6TH. P.M.
WELD COUNTY, CO



- LEGEND
- = ALIQUOT MONUMENT AS DESCRIBED
 - = CALCULATED POSITION
 - = SURFACE HOLE LOCATION (SHL)
 - ▲ = ENTRY POINT LOCATION (EP)
 - ◆ = TOP OF PRODUCTIVE ZONE (PZONE)
 - = BOTTOM HOLE LOCATION (BHL)
 - ⊙ = EXISTING WELL
 - ⊙ = ABANDONED WELL

SEE SHEET 4 OF 5 FOR TABLE





Lat40°, Inc. 6250 W. 10th Street, Unit 2, Greeley, CO 970-515-5294

DIRECTIONAL WELL PLAT

TRIPPETT 3N66W3 1-48 PAD

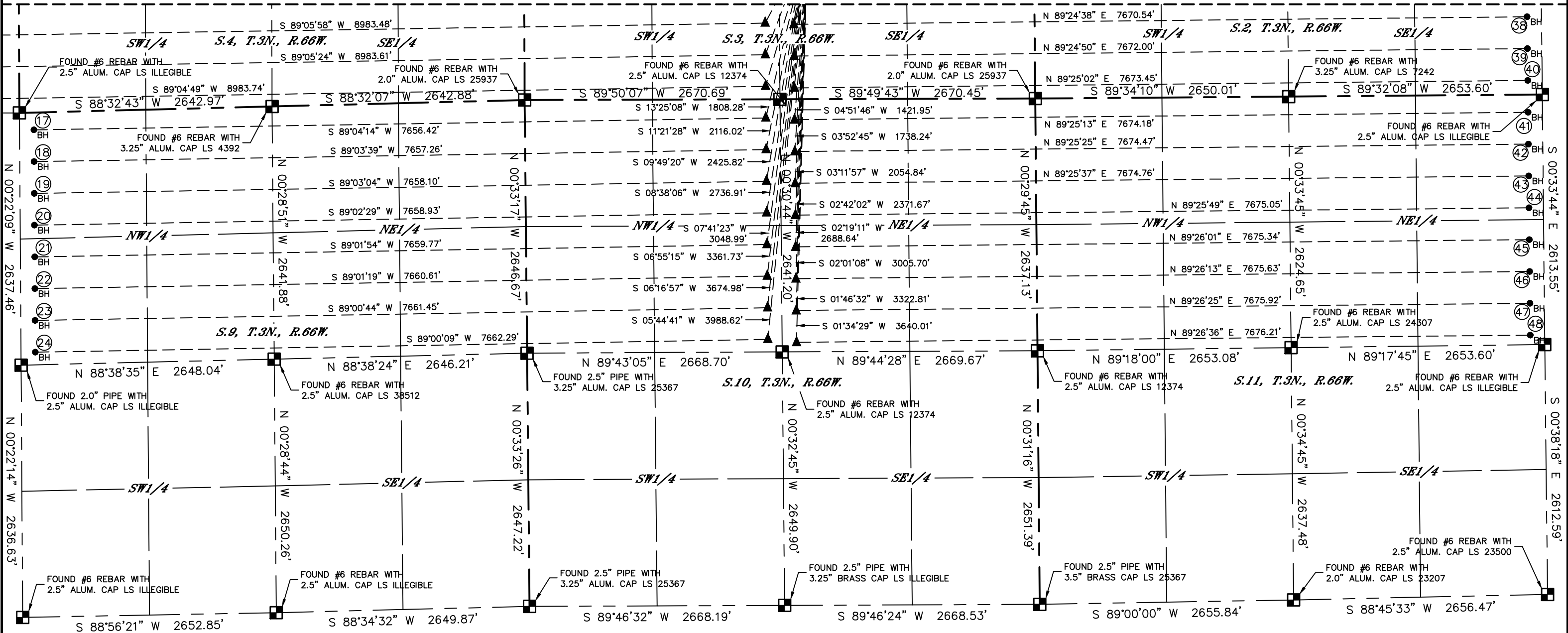
PDC ENERGY

THIS MAP DOES NOT REPRESENT A BOUNDARY SURVEY

Q: E2SW4, W2SE4
SECTION: 3
TOWNSHIP: 3N
RANGE: 66W
6TH. P.M.
WELD COUNTY, CO

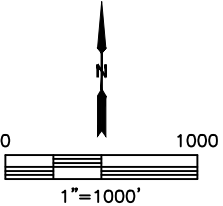
SHEET 2 OF 5

SHEET 1 OF 5



- LEGEND
- = ALIQUOT MONUMENT AS DESCRIBED
 - = CALCULATED POSITION
 - = SURFACE HOLE LOCATION (SHL)
 - ▲ = ENTRY POINT LOCATION (EP)
 - ◆ = TOP OF PRODUCTIVE ZONE (PZONE)
 - = BOTTOM HOLE LOCATION (BHL)
 - ⊙ = EXISTING WELL
 - ⊙ = ABANDONED WELL

SEE SHEET 4 OF 5 FOR TABLE



SHEET 3 OF 5 DATE: 6/17/2022
PROJECT#: 2021414



Lat40°, Inc. 6250 W. 10th Street, Unit 2, Greeley, CO 970-515-5294

DIRECTIONAL WELL PLAT
TRIPPETT 3N66W3 1-48 PAD
PDC ENERGY

Q: E2SW4, W2SE4
SECTION: 3
TOWNSHIP: 3N
RANGE: 66W
6TH. P.M.
WELD COUNTY, CO

#	WELL NAME	BHL FOOTAGE				BHL LAT °	BHL LONG °	BHL S-T-R
1	TRIPPETT 01N	105	FNL	1176	FEL	40.26060	-104.79608	5-3-66
2	TRIPPETT 02N	438	FNL	1176	FEL	40.25968	-104.79608	5-3-66
3	TRIPPETT 03N	770	FNL	1176	FEL	40.25877	-104.79609	5-3-66
4	TRIPPETT 04N	1102	FNL	1176	FEL	40.25786	-104.79609	5-3-66
5	TRIPPETT 05N	1434	FNL	1176	FEL	40.25695	-104.79609	5-3-66
6	TRIPPETT 06N	1766	FNL	1176	FEL	40.25604	-104.79609	5-3-66
7	TRIPPETT 07N	2098	FNL	1177	FEL	40.25513	-104.79610	5-3-66
8	TRIPPETT 08N	2431	FNL	1177	FEL	40.25421	-104.79610	5-3-66
9	TRIPPETT 09NA	2461	FSL	1177	FEL	40.25330	-104.79610	5-3-66
10	TRIPPETT 10C	2129	FSL	1177	FEL	40.25239	-104.79610	5-3-66
11	TRIPPETT 11N	1797	FSL	1177	FEL	40.25148	-104.79611	5-3-66
12	TRIPPETT 12N	1464	FSL	1177	FEL	40.25057	-104.79611	5-3-66
13	TRIPPETT 13N	1132	FSL	1177	FEL	40.24966	-104.79611	5-3-66
14	TRIPPETT 14N	800	FSL	1177	FEL	40.24874	-104.79611	5-3-66
15	TRIPPETT 15N	468	FSL	1178	FEL	40.24783	-104.79612	5-3-66
16	TRIPPETT 16N	136	FSL	1178	FEL	40.24692	-104.79612	5-3-66
17	TRIPPETT 17N	181	FNL	150	FWL	40.24604	-104.79137	9-3-66
18	TRIPPETT 18N	513	FNL	150	FWL	40.24513	-104.79137	9-3-66
19	TRIPPETT 19N	845	FNL	150	FWL	40.24422	-104.79137	9-3-66
20	TRIPPETT 20N	1177	FNL	150	FWL	40.24331	-104.79137	9-3-66
21	TRIPPETT 21N	1509	FNL	150	FWL	40.24240	-104.79137	9-3-66
22	TRIPPETT 22N	1841	FNL	150	FWL	40.24148	-104.79138	9-3-66
23	TRIPPETT 23N	2173	FNL	150	FWL	40.24057	-104.79138	9-3-66
24	TRIPPETT 24N	2505	FNL	150	FWL	40.23966	-104.79138	9-3-66

#	WELL NAME	BHL FOOTAGE				BHL LAT °	BHL LONG °	BHL S-T-R
25	TRIPPETT 25N	100	FNL	150	FEL	40.26080	-104.73542	2-3-66
26	TRIPPETT 26N	433	FNL	150	FEL	40.25989	-104.73542	2-3-66
27	TRIPPETT 27N	766	FNL	150	FEL	40.25898	-104.73542	2-3-66
28	TRIPPETT 28NA	1099	FNL	150	FEL	40.25806	-104.73541	2-3-66
29	TRIPPETT 29C	1431	FNL	150	FEL	40.25715	-104.73541	2-3-66
30	TRIPPETT 30N	1764	FNL	150	FEL	40.25624	-104.73541	2-3-66
31	TRIPPETT 31N	2097	FNL	150	FEL	40.25532	-104.73541	2-3-66
32	TRIPPETT 32N	2430	FNL	150	FEL	40.25441	-104.73541	2-3-66
33	TRIPPETT 33N	2479	FSL	150	FEL	40.25350	-104.73540	2-3-66
34	TRIPPETT 34N	2146	FSL	150	FEL	40.25258	-104.73540	2-3-66
35	TRIPPETT 35N	1813	FSL	150	FEL	40.25167	-104.73540	2-3-66
36	TRIPPETT 36N	1480	FSL	150	FEL	40.25076	-104.73540	2-3-66
37	TRIPPETT 37N	1147	FSL	150	FEL	40.24984	-104.73540	2-3-66
38	TRIPPETT 38N	814	FSL	150	FEL	40.24893	-104.73539	2-3-66
39	TRIPPETT 39N	481	FSL	150	FEL	40.24801	-104.73539	2-3-66
40	TRIPPETT 40N	149	FSL	150	FEL	40.24710	-104.73539	2-3-66
41	TRIPPETT 41N	184	FNL	150	FEL	40.24619	-104.73539	11-3-66
42	TRIPPETT 42N	517	FNL	150	FEL	40.24527	-104.73539	11-3-66
43	TRIPPETT 43N	850	FNL	150	FEL	40.24436	-104.73538	11-3-66
44	TRIPPETT 44N	1183	FNL	150	FEL	40.24345	-104.73538	11-3-66
45	TRIPPETT 45N	1516	FNL	150	FEL	40.24253	-104.73538	11-3-66
46	TRIPPETT 46N	1848	FNL	150	FEL	40.24162	-104.73538	11-3-66
47	TRIPPETT 47N	2181	FNL	150	FEL	40.24071	-104.73538	11-3-66
48	TRIPPETT 48N	2514	FNL	150	FEL	40.23979	-104.73538	11-3-66



Lat40°, Inc. 6250 W. 10th Street, Unit 2, Greeley, CO 970-515-5294

DIRECTIONAL WELL PLAT
TRIPPETT 3N66W3 1-48 PAD
PDC ENERGY

Q: E2SW4, W2SE4
SECTION: 3
TOWNSHIP: 3N
RANGE: 66W
6TH. P.M.
WELD COUNTY, CO



#	WELL NAME	SHL FOOTAGE			SHL LAT °	SHL LONG °	SHL PDOP	SHL ELEV (FT.)	SHL 1/4/1/4	SHL S-T-R	
1	TRIPPETT 01N	1802	FSL	2384	FEL	40.25169	-104.76239	1.4	4836.7	NWSE	3-3-66
2	TRIPPETT 02N	1787	FSL	2384	FEL	40.25164	-104.76239	1.3	4836.9	NWSE	3-3-66
3	TRIPPETT 03N	1772	FSL	2384	FEL	40.25160	-104.76239	1.3	4837.1	NWSE	3-3-66
4	TRIPPETT 04N	1757	FSL	2384	FEL	40.25156	-104.76239	1.3	4837.4	NWSE	3-3-66
5	TRIPPETT 05N	1742	FSL	2384	FEL	40.25152	-104.76239	1.3	4837.5	NWSE	3-3-66
6	TRIPPETT 06N	1727	FSL	2384	FEL	40.25148	-104.76239	1.3	4837.9	NWSE	3-3-66
7	TRIPPETT 07N	1712	FSL	2384	FEL	40.25144	-104.76239	1.3	4838.2	NWSE	3-3-66
8	TRIPPETT 08N	1697	FSL	2384	FEL	40.25140	-104.76239	1.3	4838.5	NWSE	3-3-66
9	TRIPPETT 09NA	1682	FSL	2385	FEL	40.25136	-104.76239	1.3	4838.8	NWSE	3-3-66
10	TRIPPETT 10C	1667	FSL	2385	FEL	40.25131	-104.76239	1.3	4839.1	NWSE	3-3-66
11	TRIPPETT 11N	1652	FSL	2385	FEL	40.25127	-104.76239	1.3	4839.5	NWSE	3-3-66
12	TRIPPETT 12N	1637	FSL	2385	FEL	40.25123	-104.76239	1.3	4839.8	NWSE	3-3-66
13	TRIPPETT 13N	1622	FSL	2385	FEL	40.25119	-104.76239	1.3	4840.1	NWSE	3-3-66
14	TRIPPETT 14N	1607	FSL	2385	FEL	40.25115	-104.76239	1.3	4840.4	NWSE	3-3-66
15	TRIPPETT 15N	1592	FSL	2385	FEL	40.25111	-104.76239	1.3	4840.8	NWSE	3-3-66
16	TRIPPETT 16N	1577	FSL	2385	FEL	40.25107	-104.76239	1.3	4841.2	NWSE	3-3-66
17	TRIPPETT 17N	1562	FSL	2385	FEL	40.25103	-104.76239	1.3	4841.5	NWSE	3-3-66
18	TRIPPETT 18N	1547	FSL	2385	FEL	40.25099	-104.76239	1.3	4841.9	NWSE	3-3-66
19	TRIPPETT 19N	1532	FSL	2385	FEL	40.25094	-104.76239	1.3	4842.2	NWSE	3-3-66
20	TRIPPETT 20N	1517	FSL	2386	FEL	40.25090	-104.76239	1.2	4842.5	NWSE	3-3-66
21	TRIPPETT 21N	1502	FSL	2386	FEL	40.25086	-104.76239	1.2	4842.9	NWSE	3-3-66
22	TRIPPETT 22N	1487	FSL	2386	FEL	40.25082	-104.76239	1.2	4843.1	NWSE	3-3-66
23	TRIPPETT 23N	1472	FSL	2386	FEL	40.25078	-104.76239	1.2	4843.1	NWSE	3-3-66
24	TRIPPETT 24N	1457	FSL	2386	FEL	40.25074	-104.76239	1.2	4843.4	NWSE	3-3-66
25	TRIPPETT 25N	1442	FSL	2386	FEL	40.25070	-104.76239	1.2	4843.4	NWSE	3-3-66
26	TRIPPETT 26N	1427	FSL	2386	FEL	40.25066	-104.76239	1.2	4843.4	NWSE	3-3-66
27	TRIPPETT 27N	1412	FSL	2386	FEL	40.25062	-104.76239	1.2	4843.4	NWSE	3-3-66
28	TRIPPETT 28NA	1397	FSL	2386	FEL	40.25057	-104.76239	1.2	4843.5	NWSE	3-3-66
29	TRIPPETT 29C	1382	FSL	2386	FEL	40.25053	-104.76239	1.2	4843.6	NWSE	3-3-66
30	TRIPPETT 30N	1367	FSL	2386	FEL	40.25049	-104.76239	1.2	4843.7	NWSE	3-3-66
31	TRIPPETT 31N	1352	FSL	2386	FEL	40.25045	-104.76239	1.2	4843.8	NWSE	3-3-66
32	TRIPPETT 32N	1337	FSL	2387	FEL	40.25041	-104.76239	1.2	4843.9	NWSE	3-3-66
33	TRIPPETT 33N	1322	FSL	2387	FEL	40.25037	-104.76239	1.2	4844.1	NWSE	3-3-66
34	TRIPPETT 34N	1307	FSL	2387	FEL	40.25033	-104.76240	1.2	4844.3	SWSE	3-3-66
35	TRIPPETT 35N	1292	FSL	2387	FEL	40.25029	-104.76240	1.2	4844.4	SWSE	3-3-66
36	TRIPPETT 36N	1277	FSL	2387	FEL	40.25024	-104.76240	1.2	4844.7	SWSE	3-3-66
37	TRIPPETT 37N	1262	FSL	2387	FEL	40.25020	-104.76240	1.2	4844.8	SWSE	3-3-66
38	TRIPPETT 38N	1247	FSL	2387	FEL	40.25016	-104.76240	1.2	4844.8	SWSE	3-3-66
39	TRIPPETT 39N	1232	FSL	2387	FEL	40.25012	-104.76240	1.2	4844.9	SWSE	3-3-66
40	TRIPPETT 40N	1217	FSL	2387	FEL	40.25008	-104.76240	1.2	4845.0	SWSE	3-3-66
41	TRIPPETT 41N	1202	FSL	2387	FEL	40.25004	-104.76240	1.2	4845.0	SWSE	3-3-66
42	TRIPPETT 42N	1187	FSL	2387	FEL	40.25000	-104.76240	1.2	4845.0	SWSE	3-3-66
43	TRIPPETT 43N	1172	FSL	2388	FEL	40.24996	-104.76240	1.2	4845.2	SWSE	3-3-66
44	TRIPPETT 44N	1157	FSL	2388	FEL	40.24992	-104.76240	1.2	4845.5	SWSE	3-3-66
45	TRIPPETT 45N	1142	FSL	2388	FEL	40.24987	-104.76240	1.2	4845.7	SWSE	3-3-66
46	TRIPPETT 46N	1127	FSL	2388	FEL	40.24983	-104.76240	1.2	4845.7	SWSE	3-3-66
47	TRIPPETT 47N	1112	FSL	2388	FEL	40.24979	-104.76240	1.2	4845.8	SWSE	3-3-66
48	TRIPPETT 48N	1097	FSL	2388	FEL	40.24975	-104.76240	1.2	4845.9	SWSE	3-3-66

