



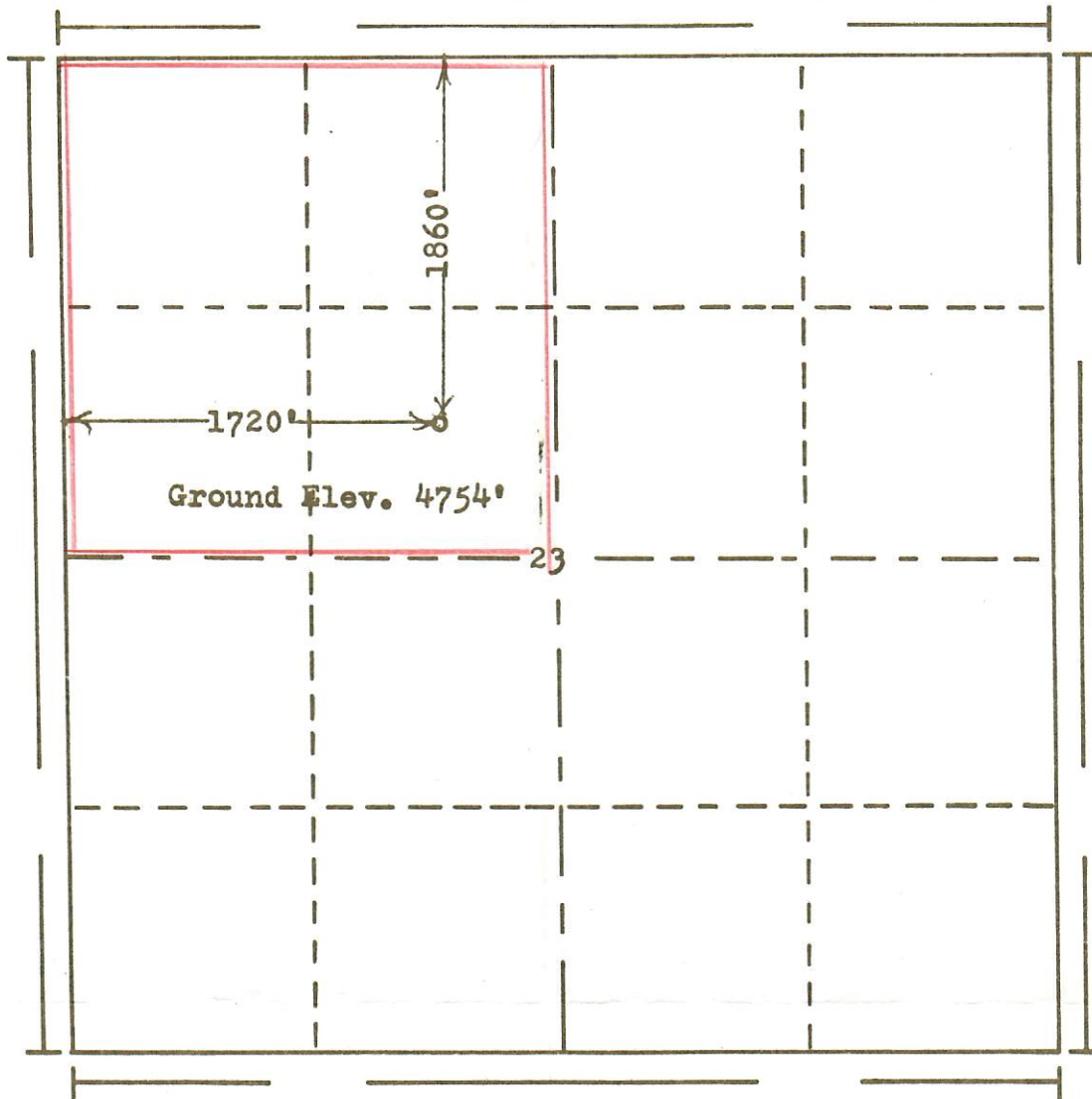
00416072

RECEIVED

AUG 18 1969

COLO. OIL & GAS CONS. COMM.

R. 55 W



Scale... 1" = 1000'

Powers Elevation Company, Inc. of Denver, Colorado
has in accordance with a request from Mr. Brooks
for Enbrook Oil & Gas
determined the location of No.1 Charles Jolly
to be 1720'FW & 1860'FN Section 23 Township 3 South
Range 55 West of the 6th Principal Meridian
Washington County, Colorado

I hereby certify that this plat is an
accurate representation of a correct
survey showing the location of

Date: 8-8-69

B. J. Hall
Licensed Land Surveyor No. 2853
State of Colorado

69-478