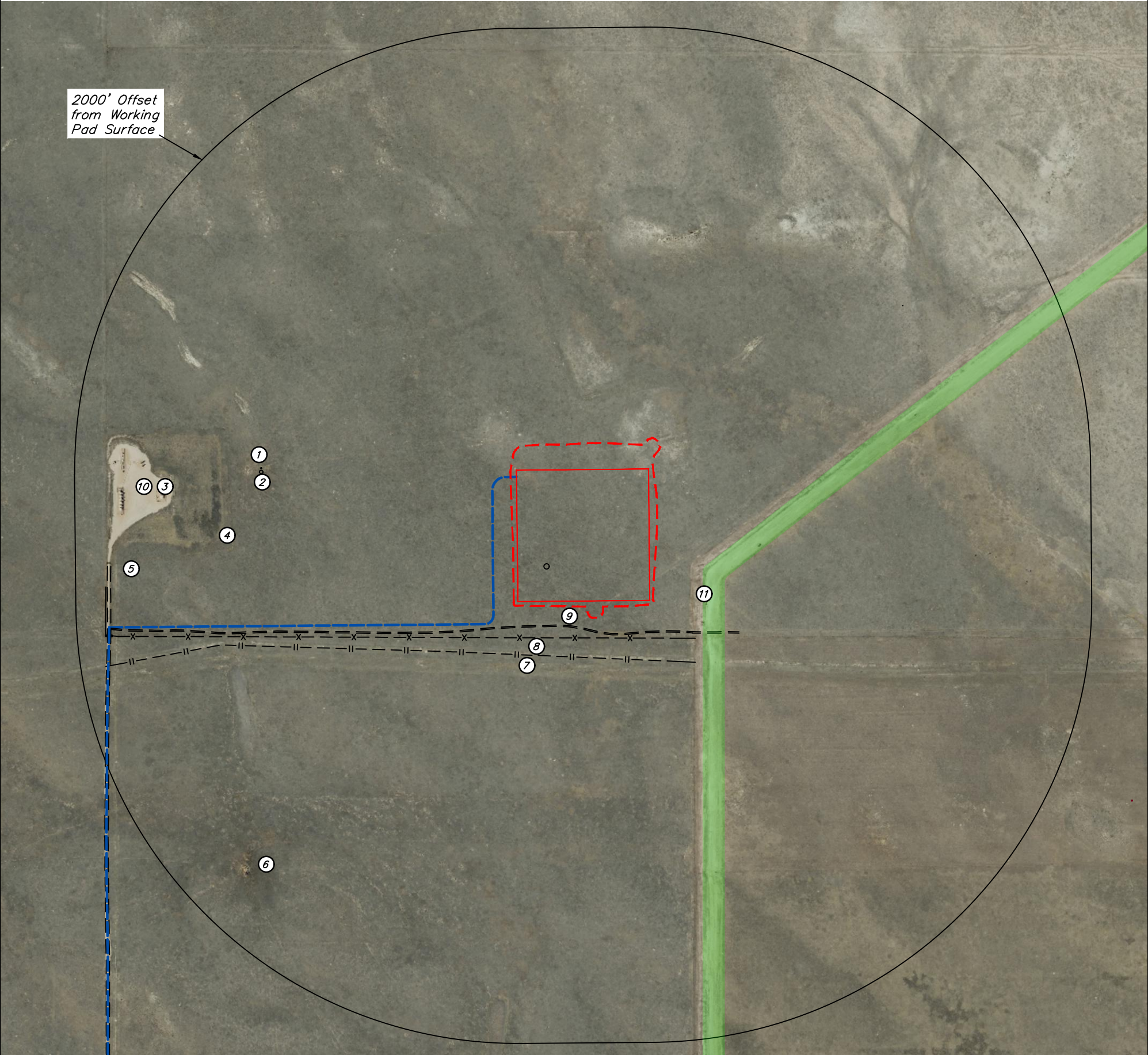


2000' Offset
from Working
Pad Surface



LEGEND

- = OIL & GAS LOCATION
- = WORKING PAD SURFACE
- = PROPOSED ACCESS ROAD
- x- = FENCE
- o = REFERENCE POINT
- ||- = PIPELINE
- = = ROAD
- ⊗ = WATER WELL
- = PIPELINE CORRIDOR

Reference Point: WADE 20S-30-01 WELL
Lat: 40.655880°
Long: -104.003164°
324' FSL 1993' FWL
Ungraded Ground Elev. 4849.1'
PDOP: 1.3

REV: 01 12-7-22 K.C. (ADD PIPELINE)

#	FEATURE	BEARING	DISTANCE
1	WATER WELL	WEST	1215'±
2	TANK	WEST	1206'±
3	CASTOR FEDERAL LG #17-62HN WELL	WEST	1607'±
4	CASTOR FEDERAL LG #17-62HN PAD	WEST	1327'±
5	CASTOR FEDERAL LG #17-62HN ACCESS ROAD	WEST	1840'±
6	CATTLE DRINKER	SW	1726'±
7	PIPELINE	SOUTH	240'±
8	FENCE	SOUTH	163'±
9	2-TRACK	SOUTH	109'±
10	TANK BATTERY	WEST	1773'±
11	PIPELINE CORRIDOR	EAST	239'

NOTES:
• Bearings & distances shown are from the nearest edge of working pad surface.

CIVITAS NORTH, LLC

WADE 8-59 17 PAD
SE 1/4 SW 1/4, SECTION 17, T8N, R59W, 6th P.M.
WELD COUNTY, COLORADO



UELS, LLC
Corporate Office * 85 South 200 East
Vernal, UT 84078 * (435) 789-1017

SURVEYED BY	GREG WEIMER, O.R.	08-05-22	SCALE
DRAWN BY	K.C.	08-10-22	1" = 500'

LOCATION DRAWING