

LEGEND

- 6

F-0.4'

EG El. -51.1'

DD

DIVERSION DITCH

ST

SEDIMENT TRAP

SM

SEEDING AND MULCHING

BM

BERM
- x-x-x-

EXISTING FENCE

-||-||-

EXISTING PIPELINE

-0000-

EXISTING MAJOR CONTOUR

-0000-

EXISTING MINOR CONTOUR

-0000-

PROPOSED MAJOR CONTOUR

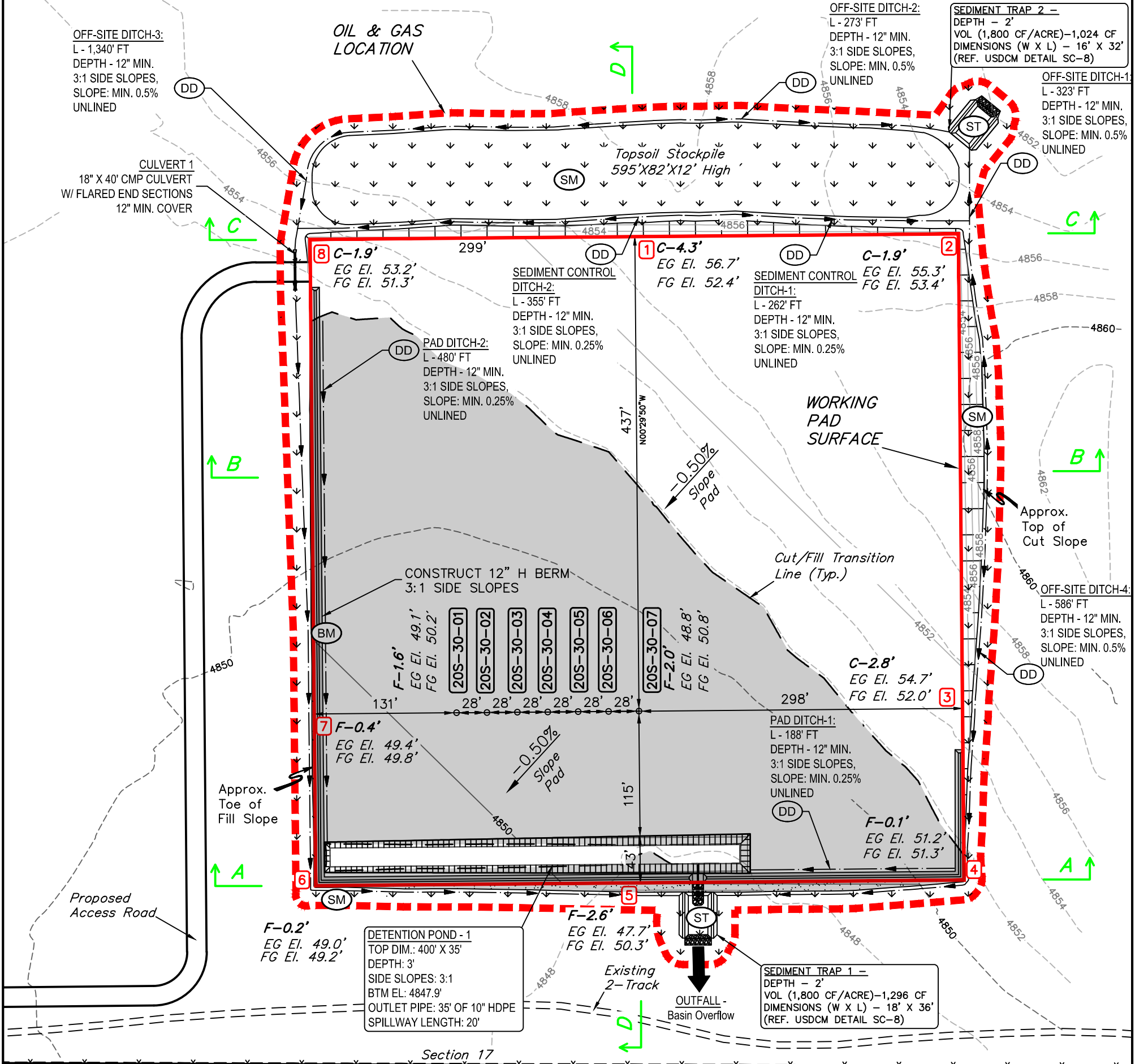
-0000-

PROPOSED MINOR CONTOUR

WORKING PAD SURFACE

- - - - -

OIL & GAS LOCATION



APPROXIMATE WELL SITE DISTURBANCE AREAS		
		ACRES
WORKING PAD SURFACE DISTURBANCE		±8.155
CONSTRUCTION DISTURBANCE		±2.805
TOTAL OIL & GAS LOCATION		±10.960
APPROXIMATE SURFACE DISTURBANCE AREAS		
	DISTANCE	ACRES
TOTAL OIL & GAS LOCATION	NA	±10.960
30' WIDE ACCESS ROAD R-O-W DISTURBANCE	±2465'	±1.698
TOTAL SURFACE USE AREA		±12.658

NOTE: Earthwork calculations require a fill @ the location stakes for balance. All fill is to be compacted to a minimum of 95% of the maximum dry density obtained by AASHTO method t-99.

- NOTES:
- Contours shown at 2' intervals.
 - Cut/Fill slopes 3:1 (Typ.).
 - Overall Working Pad Surface = 597' x 595'

CIVITAS NORTH, LLC

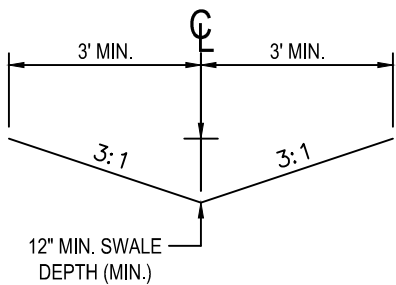
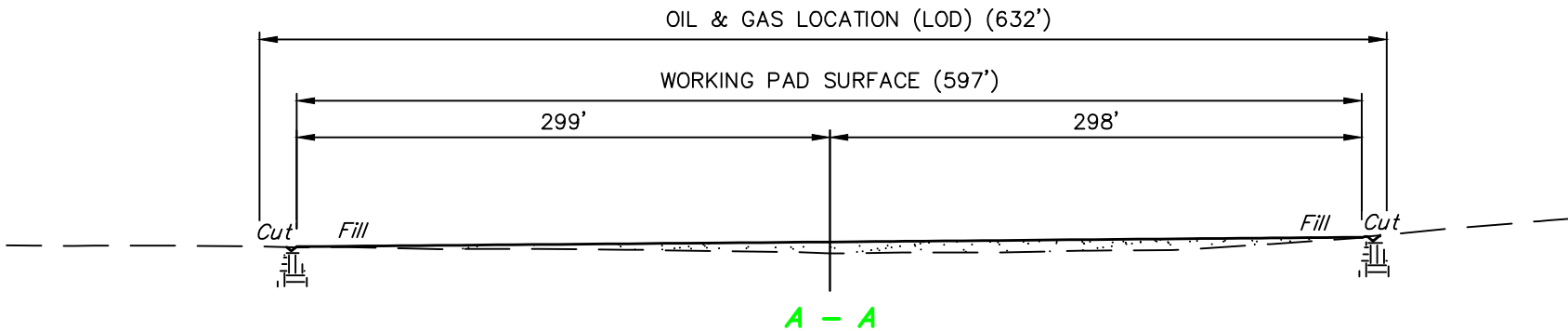
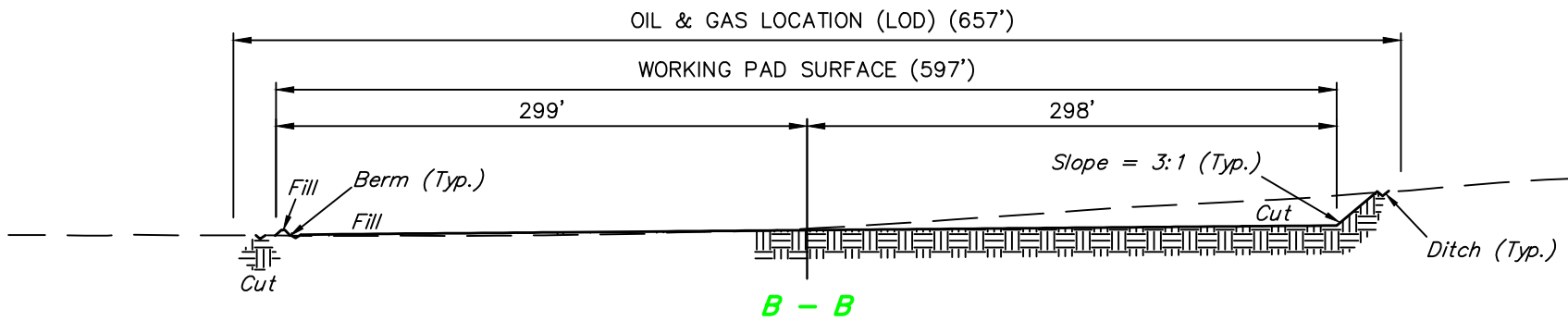
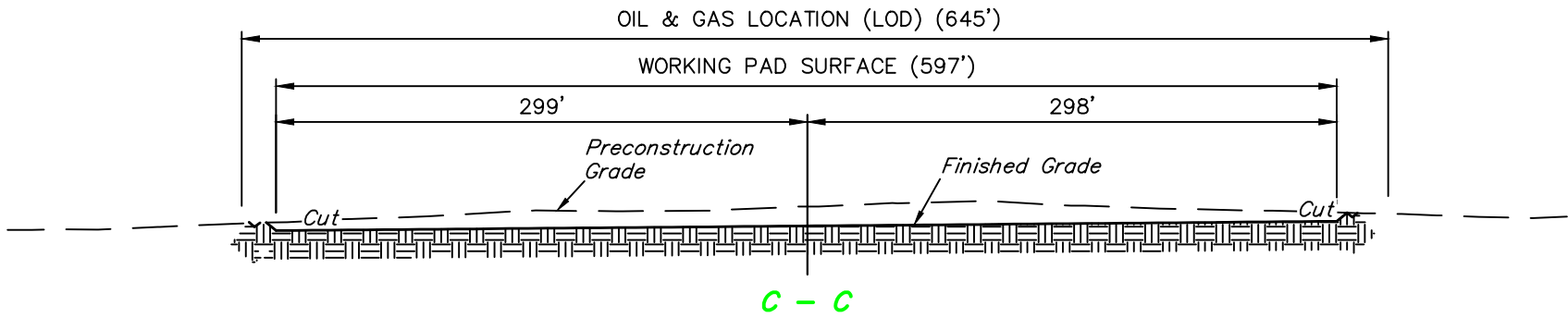
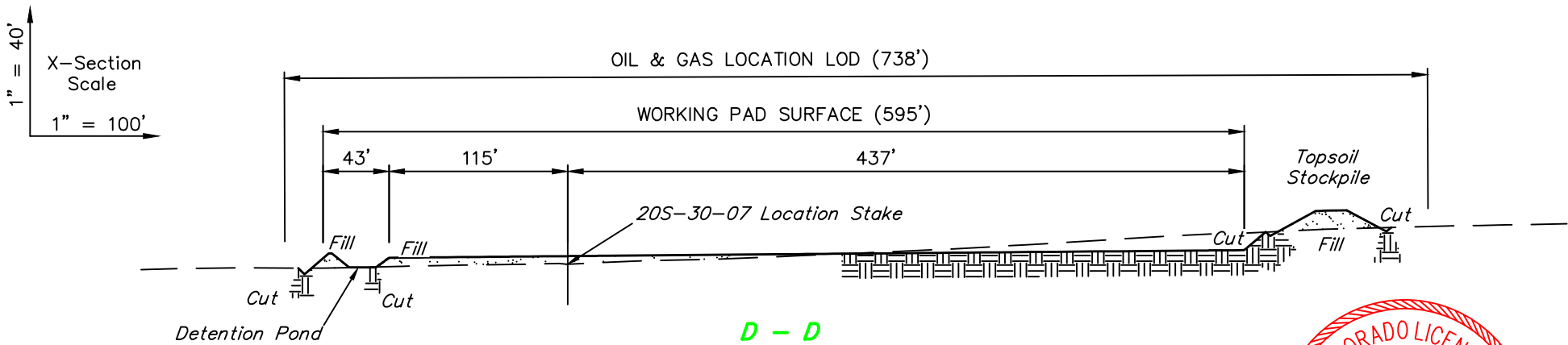
WADE 8-59 17 PAD
SE 1/4 SW 1/4, SECTION 17, T8N, R59W, 6th P.M.
WELD COUNTY, COLORADO

SURVEYED BY	MATTHEW MILLER, O.R.	12-09-20	SCALE
DRAWN BY	K.C.	08-10-22	1" = 100'

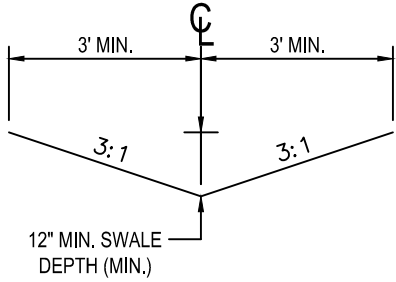
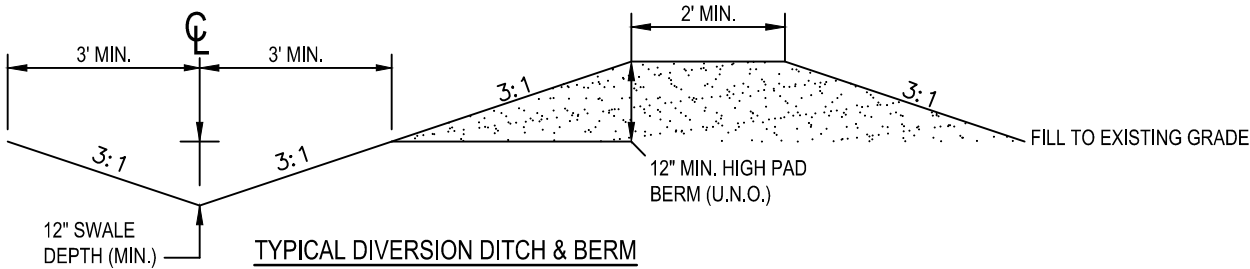
CONSTRUCTION LAYOUT - PLAN VIEW



UELS, LLC
Corporate Office * 85 South 200 East
Vernal, UT 84078 * (435) 789-1017



TYPICAL OFF-SITE DIVERSION DITCH



TYPICAL PAD DITCH

APPROXIMATE EARTHWORK QUANTITIES	
(10") TOPSOIL STRIPPING	11,540 Cu. Yds.
REMAINING LOCATION	14,990 Cu. Yds.
TOTAL CUT	26,530 Cu. Yds.
FILL	14,990 Cu. Yds.
EXCESS MATERIAL	11,540 Cu. Yds.
TOPSOIL	11,540 Cu. Yds.
EXCESS UNBALANCE (After Interim Rehabilitation)	0 Cu. Yds.

APPROXIMATE WELL SITE DISTURBANCE AREAS	
	ACRES
WORKING PAD SURFACE DISTURBANCE	±8.155
CONSTRUCTION DISTURBANCE	±2.805
TOTAL OIL & GAS LOCATION	±10.960

APPROXIMATE SURFACE DISTURBANCE AREAS		
	DISTANCE	ACRES
TOTAL OIL & GAS LOCATION	NA	±10.960
30' WIDE ACCESS ROAD R-O-W DISTURBANCE	±2465'	±1.698
TOTAL SURFACE USE AREA		±12.658

- NOTES:**
- Fill quantity includes 10% for compaction.
 - Calculations based on 10" of topsoil stripping.
 - Cut/Fill slopes 3:1 (Typ.).



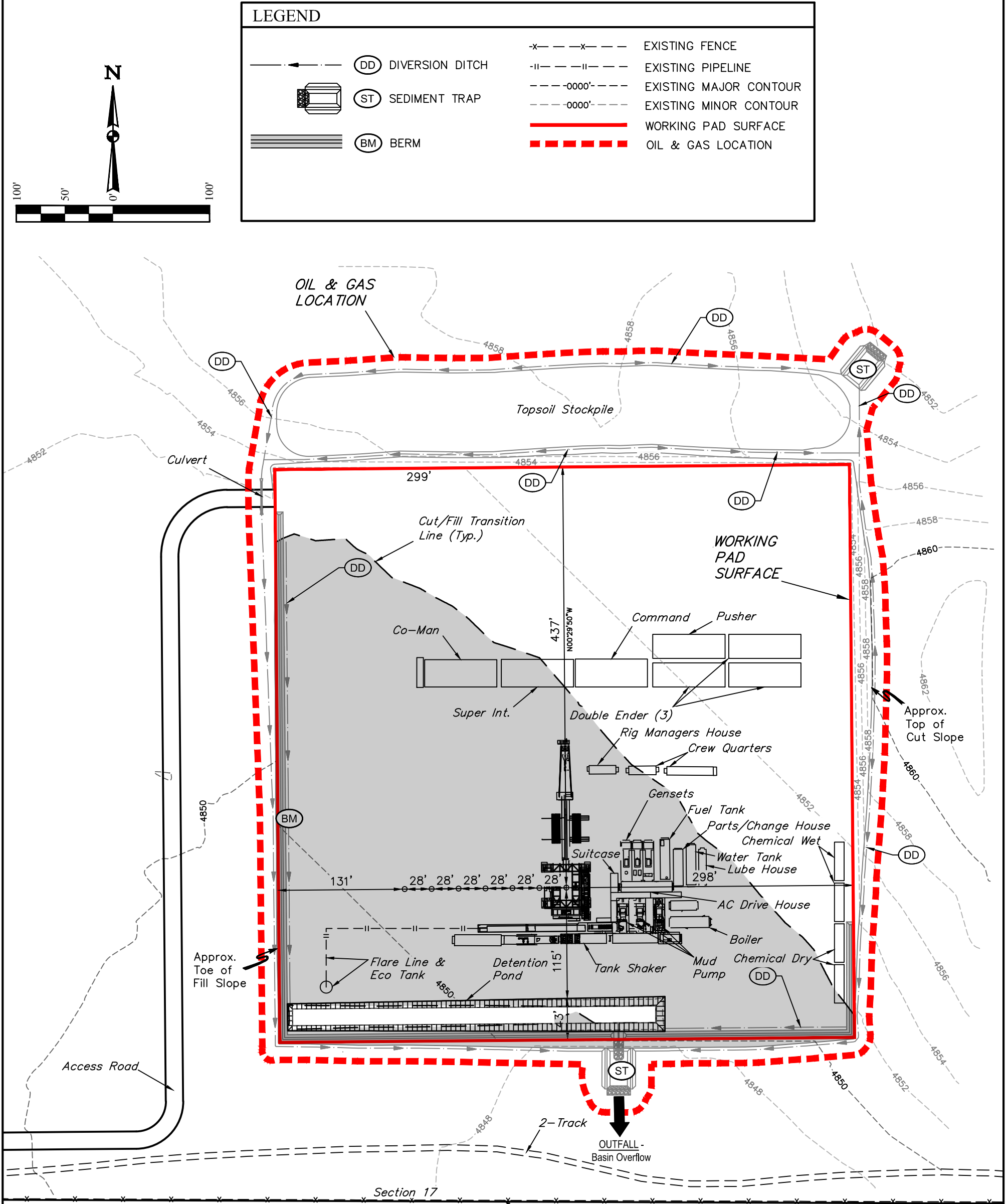
UELS, LLC
Corporate Office * 85 South 200 East
Vernal, UT 84078 * (435) 789-1017

CIVITAS NORTH, LLC

WADE 8-59 17 PAD
SE 1/4 SW 1/4, SECTION 17, T8N, R59W, 6th P.M.
WELD COUNTY, COLORADO

SURVEYED BY	MATTHEW MILLER, O.R.	12-09-20	SCALE
DRAWN BY	K.C.	08-10-22	AS SHOWN

CONSTRUCTION LAYOUT - CROSS SECTIONS



Section 17
Section 20
Fence
Pipeline

REV: 1 10-25-22 P.M. (ADD CHEMICAL STORAGE)

APPROXIMATE WELL SITE DISTURBANCE AREAS		
		ACRES
WORKING PAD SURFACE DISTURBANCE		±8.155
CONSTRUCTION DISTURBANCE		±2.805
TOTAL OIL & GAS LOCATION		±10.960
APPROXIMATE SURFACE DISTURBANCE AREAS		
	DISTANCE	ACRES
TOTAL OIL & GAS LOCATION	NA	±10.960
30' WIDE ACCESS ROAD R-O-W DISTURBANCE	±2465'	±1.698
TOTAL SURFACE USE AREA		±12.658

- NOTES:
- Contours shown at 2' intervals.
 - Cut/Fill slopes 3:1 (Typ.).
 - Overall Working Pad Surface = 597' x 595'

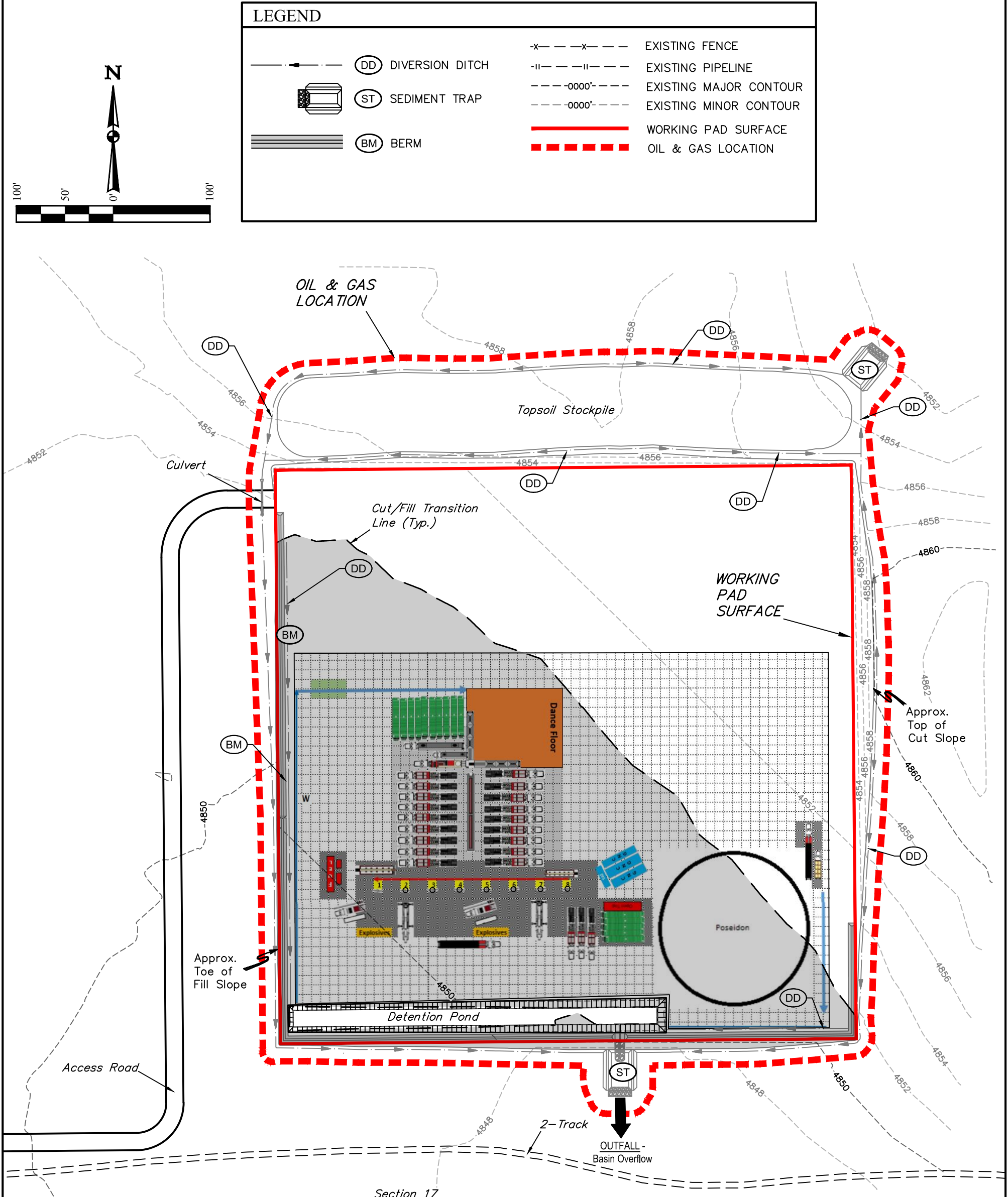


CIVITAS NORTH, LLC

WADE 8-59 17 PAD
SE 1/4 SW 1/4, SECTION 17, T8N, R59W, 6th P.M.
WELD COUNTY, COLORADO

SURVEYED BY	MATTHEW MILLER, O.R.	12-09-20	SCALE
DRAWN BY	K.C.	08-10-22	1" = 100'

PRELIMINARY DRILL RIG LAYOUT



REV: 1 10-25-22 P.M. (ADD POSEIDON TANK)

APPROXIMATE WELL SITE DISTURBANCE AREAS		
	ACRES	
WORKING PAD SURFACE DISTURBANCE	±8.155	
CONSTRUCTION DISTURBANCE	±2.805	
TOTAL OIL & GAS LOCATION	±10.960	
APPROXIMATE SURFACE DISTURBANCE AREAS		
	DISTANCE	ACRES
TOTAL OIL & GAS LOCATION	NA	±10.960
30' WIDE ACCESS ROAD R-O-W DISTURBANCE	±2465'	±1.698
TOTAL SURFACE USE AREA		±12.658

NOTES:

- Contours shown at 2' intervals.
- Cut/Fill slopes 3:1 (Typ.).
- Overall Working Pad Surface = 597' x 595'

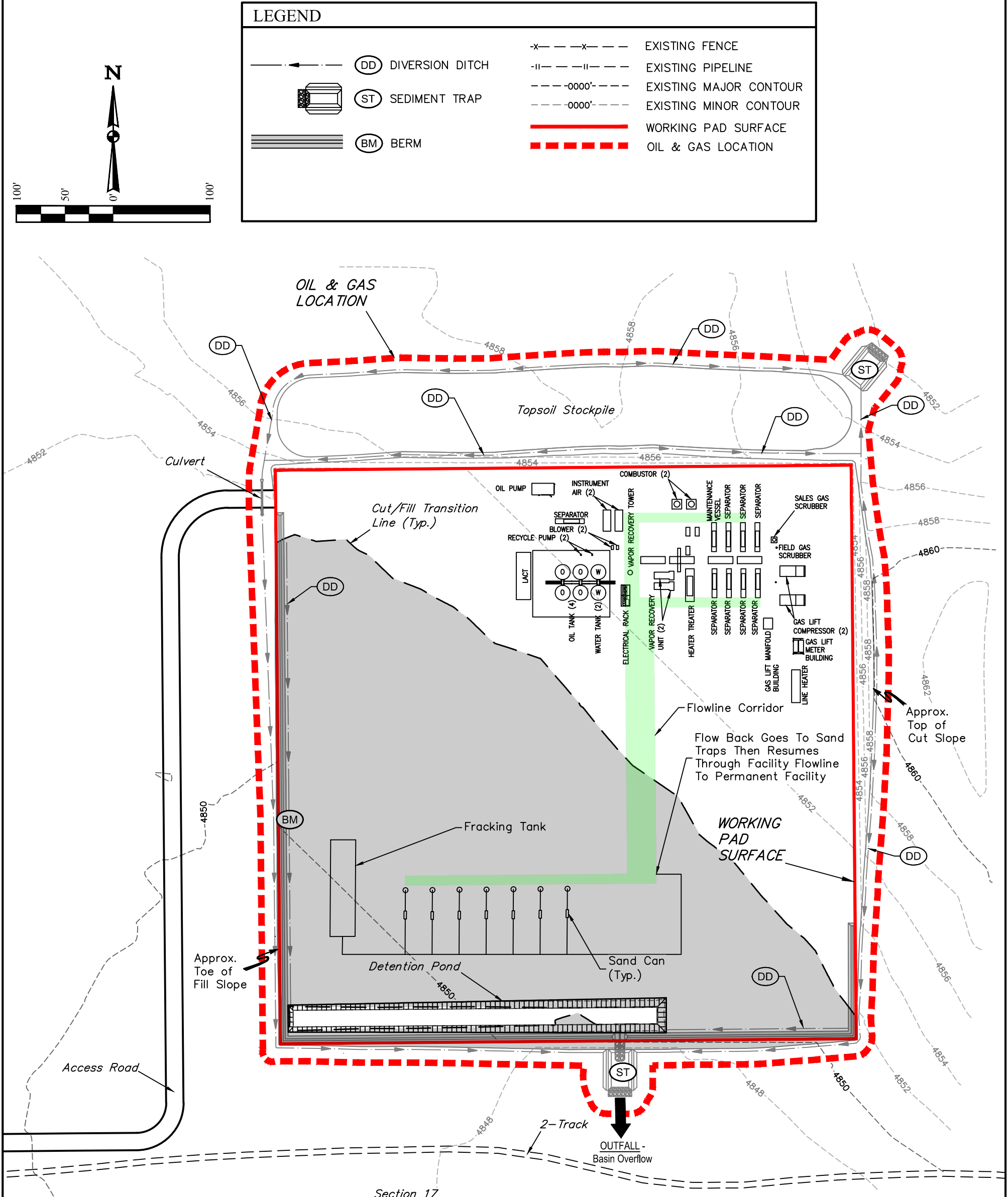
UINTAH
ENGINEERING & LAND SURVEYING

CIVITAS NORTH, LLC

WADE 8-59 17 PAD
SE 1/4 SW 1/4, SECTION 17, T8N, R59W, 6th P.M.
WELD COUNTY, COLORADO

SURVEYED BY	MATTHEW MILLER, O.R.	12-09-20	SCALE
DRAWN BY	K.C.	08-10-22	1" = 100'

PRELIMINARY WELL COMPLETION & STIMULATION LAYOUT



REV: 2 12-08-22 K.C. (FACILITY CHANGES)			
APPROXIMATE WELL SITE DISTURBANCE AREAS			
			ACRES
WORKING PAD SURFACE DISTURBANCE			±8.155
CONSTRUCTION DISTURBANCE			±2.805
TOTAL OIL & GAS LOCATION			±10.960
APPROXIMATE SURFACE DISTURBANCE AREAS			
		DISTANCE	ACRES
TOTAL OIL & GAS LOCATION		NA	±10.960
30' WIDE ACCESS ROAD R-O-W DISTURBANCE		±2465'	±1.698
TOTAL SURFACE USE AREA			±12.658

NOTES:

- Contours shown at 2' intervals.
- Cut/Fill slopes 3:1 (Typ.).
- Overall Working Pad Surface = 597' x 595'

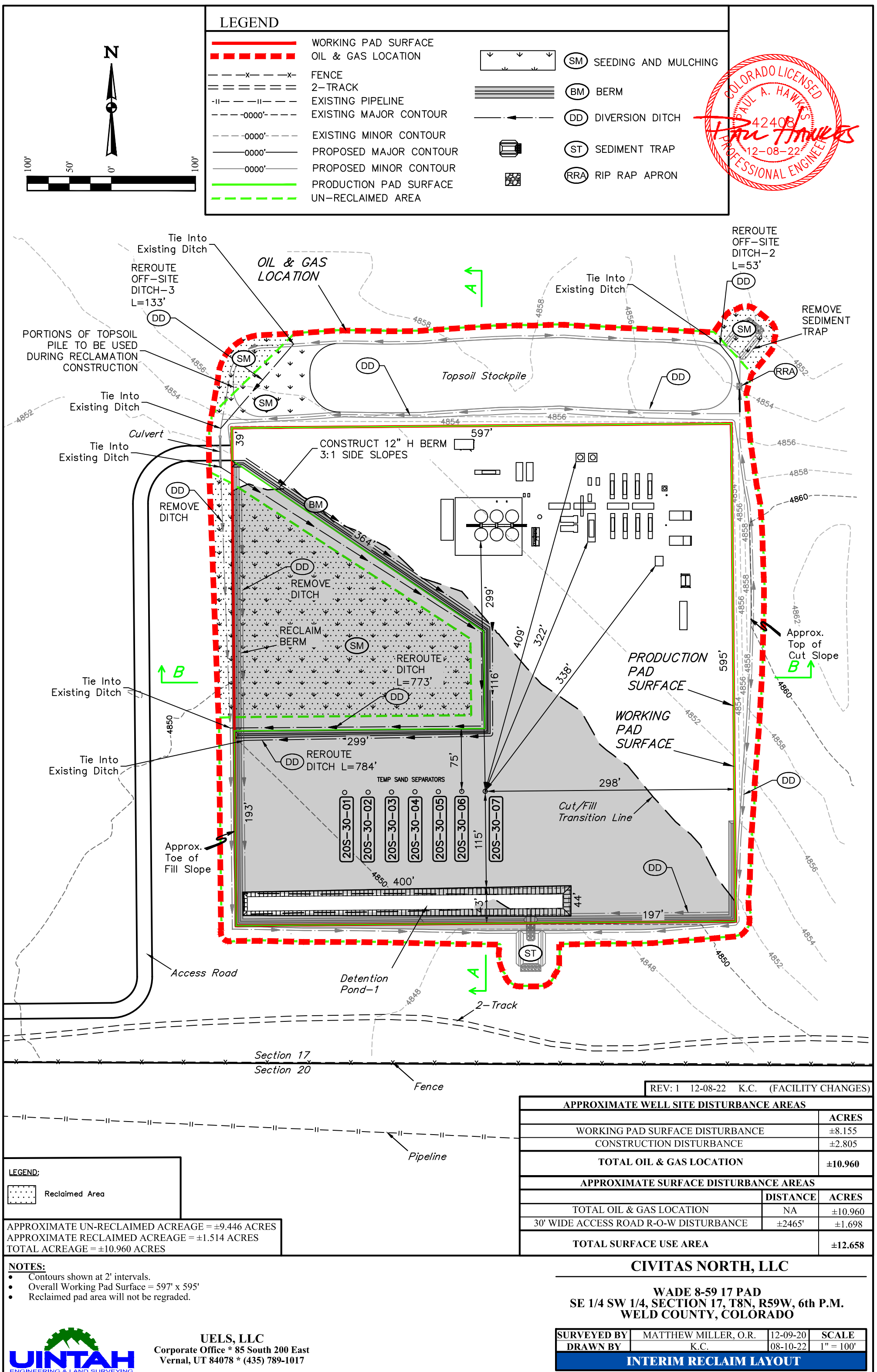
CIVITAS NORTH, LLC

WADE 8-59 17 PAD
SE 1/4 SW 1/4, SECTION 17, T8N, R59W, 6th P.M.
WELD COUNTY, COLORADO

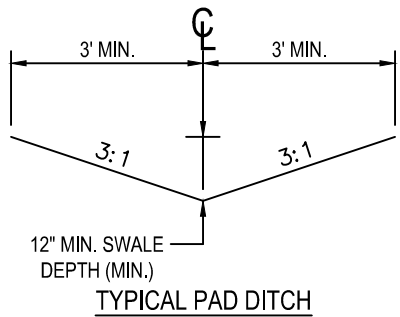
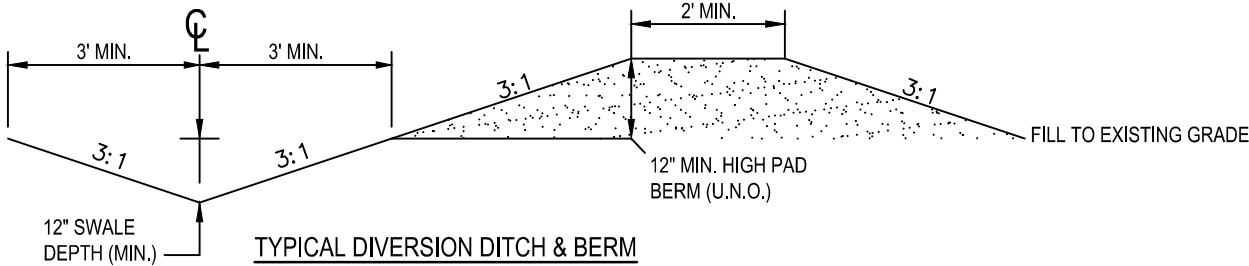
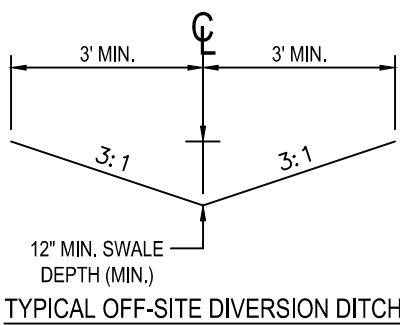
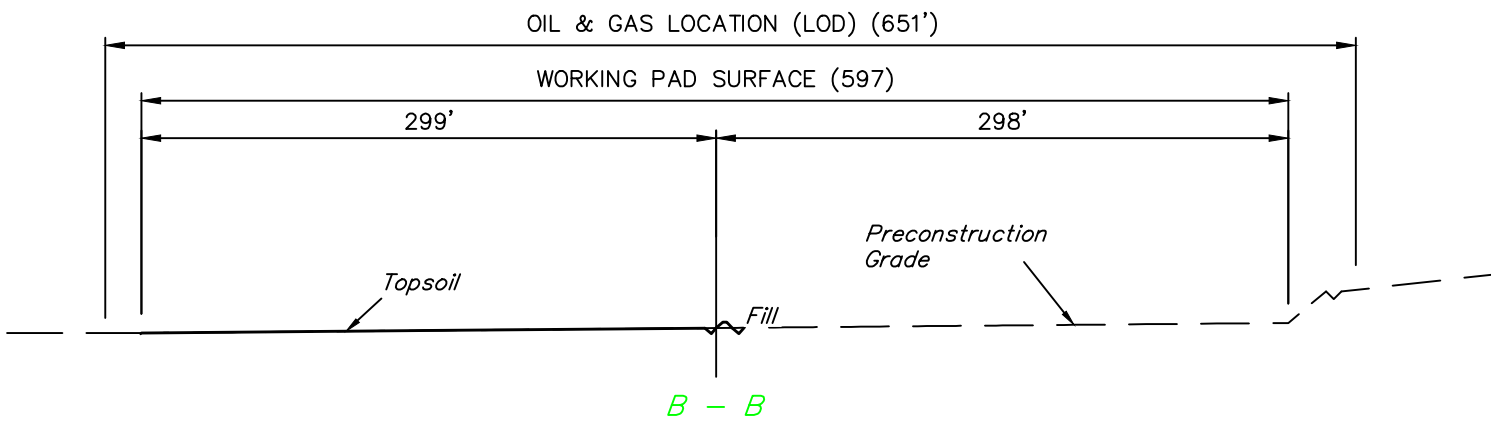
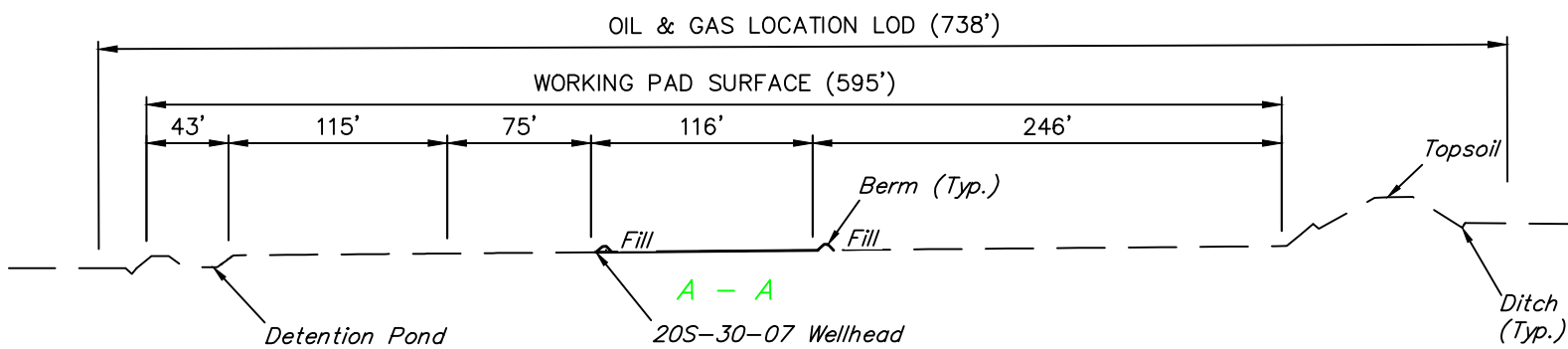
SURVEYED BY	MATTHEW MILLER, O.R.	12-09-20	SCALE
DRAWN BY	K.C.	08-10-22	1" = 100'

PRELIMINARY FLOWBACK EQUIPMENT LAYOUT





1" = 40'
X-Section
Scale
1" = 100'



APPROXIMATE UN-RECLAIMED ACREAGE = ±9.446 ACRES
APPROXIMATE RECLAIMED ACREAGE = ±1.514 ACRES
TOTAL ACREAGE = ±10.960 ACRES

APPROXIMATE WELL SITE DISTURBANCE AREAS	
	ACRES
WORKING PAD SURFACE DISTURBANCE	±8.155
CONSTRUCTION DISTURBANCE	±2.805
TOTAL OIL & GAS LOCATION	±10.960
APPROXIMATE SURFACE DISTURBANCE AREAS	
DISTANCE	ACRES
TOTAL OIL & GAS LOCATION	NA ±10.960
30' WIDE ACCESS ROAD R-O-W DISTURBANCE	±2465' ±1.698
TOTAL SURFACE USE AREA	±12.658

CIVITAS NORTH, LLC

WADE 8-59 17 PAD
SE 1/4 SW 1/4, SECTION 17, T8N, R59W, 6th P.M.
WELD COUNTY, COLORADO

SURVEYED BY	MATTHEW MILLER, O.R.	12-09-20	SCALE
DRAWN BY	K.C.	08-10-20	AS SHOWN

INTERIM RECLAIM LAYOUT - CROSS SECTIONS



UELS, LLC
Corporate Office * 85 South 200 East
Vernal, UT 84078 * (435) 789-1017

