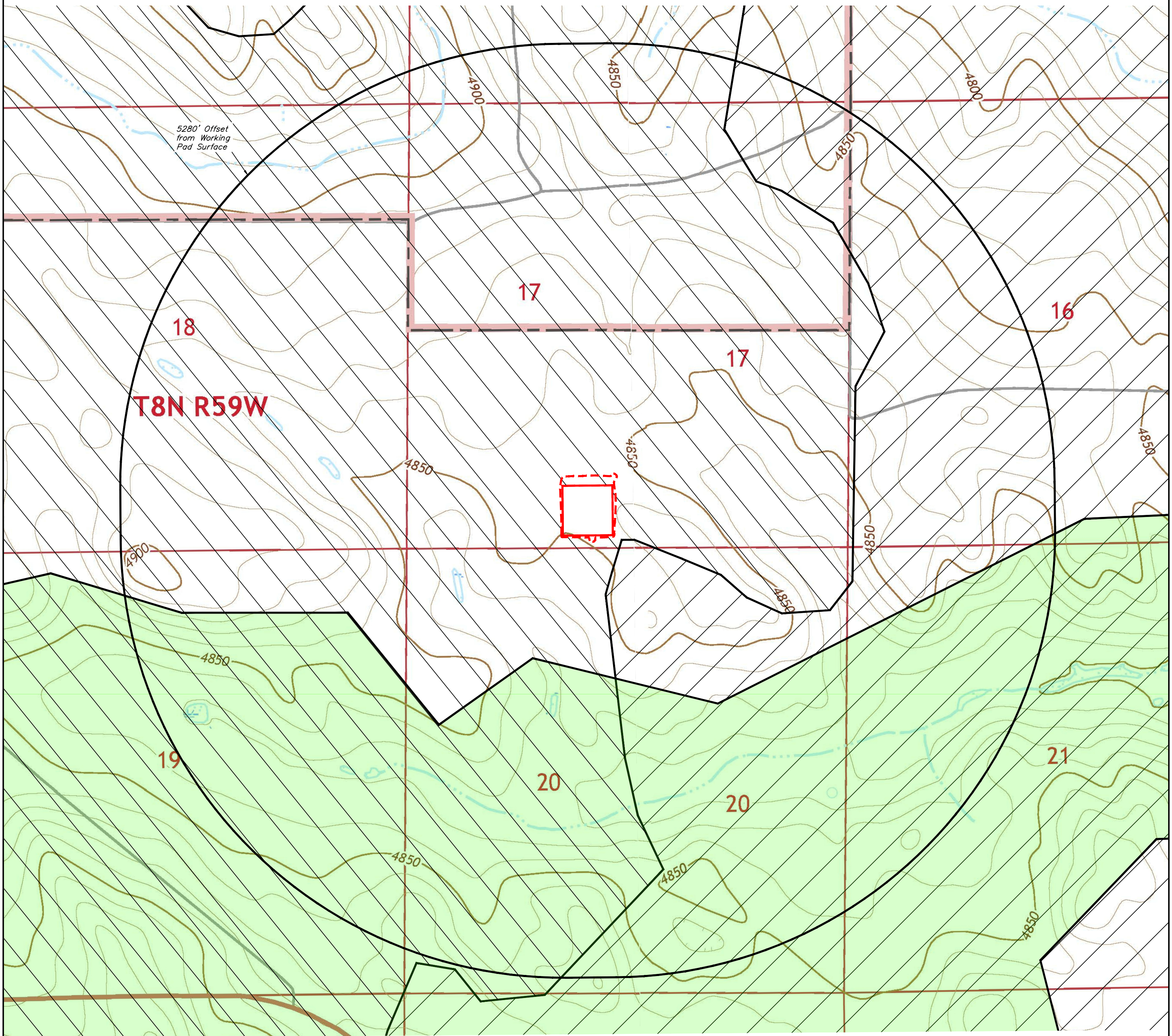






Jeffrey Schroeder  
Professional Geologist



- There are no known/permitted mines, coal areas, landslides or earthquake records within 5280' of the working pad surface. [https://cogccmap.state.co.us/cogcc\\_gis\\_online/](https://cogccmap.state.co.us/cogcc_gis_online/) (08-10-22)
- Fault (COGCC) - None - [https://cogccmap.state.co.us/cogcc\\_gis\\_online/](https://cogccmap.state.co.us/cogcc_gis_online/) (08-10-22)
- Landslide (COGCC) - None - [https://cogccmap.state.co.us/cogcc\\_gis\\_online/](https://cogccmap.state.co.us/cogcc_gis_online/) (08-10-22)
- Underground Mine (COGCC) - None - [https://cogccmap.state.co.us/cogcc\\_gis\\_online/](https://cogccmap.state.co.us/cogcc_gis_online/) (08-10-22)
- Collapsible Soils (CGS) - <https://cologeosurvey.maps.arcgis.com/apps/webappviewer/index.html?id=a6f816b35fb64d3da096e84af661f070> (08-10-22)
- Radioactive Minerals (COGCC) - None - [https://cogccmap.state.co.us/cogcc\\_gis\\_online/](https://cogccmap.state.co.us/cogcc_gis_online/) (08-10-22)
- Floodplain information was taken from COGCC GIS data. (Floodplain-Colorado 100-year Effective as of 2020) (08-10-22)



### LEGEND

-  = OIL & GAS LOCATION  
 = WORKING PAD SURFACE  
 = EG-14 EOLIAN (WIND BLOWN) DEPOSITS  
 = EG-14 DUNE AND SHEET SAND DEPOSITS  
 = EG-14 CRETACEOUS & TERTIARY FORMATIONS

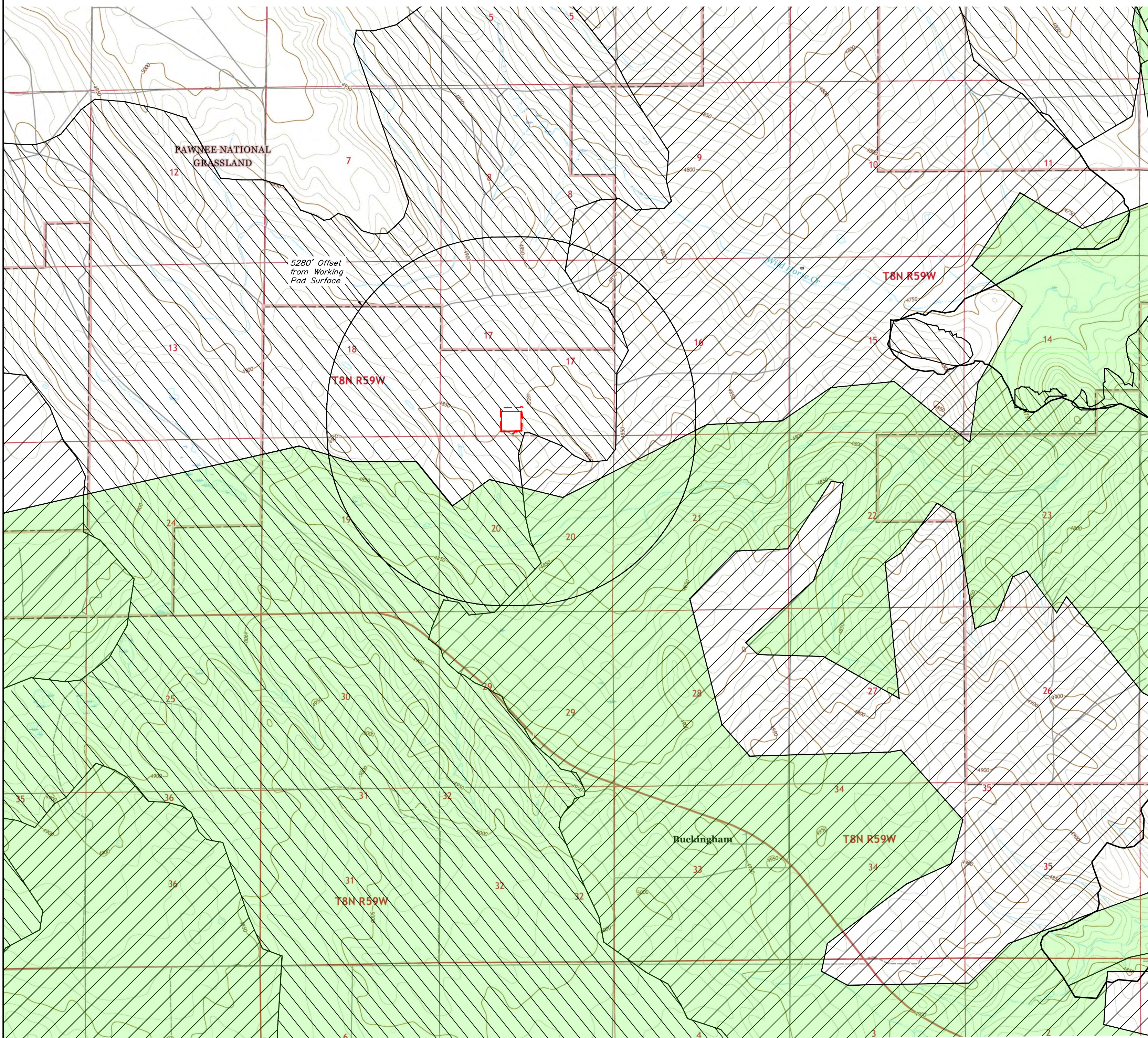
Certification:

I certify that I am a Professional Geologist, having met the educational requirements and professional work experience required by C.R.S. 23-41-208(b). I have reviewed information pertaining to the Oil and Gas Location and the surrounding area, and have identified the following Geologic Hazards:

EG-14 Eolian Soils and EG 14 Cretaceous and Tertiary Formations – Since the location is within rangeland with a fair amount of vegetation, it is believe these hazards are not present in significant enough quantities to adversely impact the proposed project. As noted in the topsoil plan for the proposed location any sands within the soils are bound by other materials ) (I.E. Clay/loam); erosion from wind or water is minimal..

Hfz Schmidt

Jeffrey Schroeder  
Professional Geologist



**NOTES:**

- There are no known/permitted mines, coal areas, landslides or earthquake records within 5280' of the working pad surface. [https://cogccmap.state.co.us/cogcc\\_gis\\_online/](https://cogccmap.state.co.us/cogcc_gis_online/) (08-10-22)
- Fault (COGCC) - None - [https://cogccmap.state.co.us/cogcc\\_gis\\_online/](https://cogccmap.state.co.us/cogcc_gis_online/) (08-10-22)
- Landslide (COGCC) - None - [https://cogccmap.state.co.us/cogcc\\_gis\\_online/](https://cogccmap.state.co.us/cogcc_gis_online/) (08-10-22)
- Underground Mine (COGCC) - None - [https://cogccmap.state.co.us/cogcc\\_gis\\_online/](https://cogccmap.state.co.us/cogcc_gis_online/) (08-10-22)
- Collapsible Soils (CGS) - <https://cologeosurvey.maps.arcgis.com/apps/webappviewer/index.html?id=a6f816b35fb64d3da096e84af661f070> (08-10-22)
- Radioactive Minerals (COGCC) - None - [https://cogccmap.state.co.us/cogcc\\_gis\\_online/](https://cogccmap.state.co.us/cogcc_gis_online/) (08-10-22)
- Floodplain information was taken from COGCC GIS data. (Floodplain-Colorado 100-year Effective as of 2020) (08-10-22)

Sheet 2 of 2

REV: 1 10-06-22 P.M. (ADD GEOLOGIST CERTIFICATION)

**CIVITAS NORTH, LLC**

WADE 8-59 17 PAD  
SE 1/4 SW 1/4, SECTION 17, T8N, R59W, 6th P.M.  
WELD COUNTY, COLORADO

SURVEYED BY	GREG WEIMER, O.R.	08-05-22	SCALE
DRAWN BY	K.C.	08-10-22	1" = 2000'

**GEOLOGIC HAZARDS MAP**