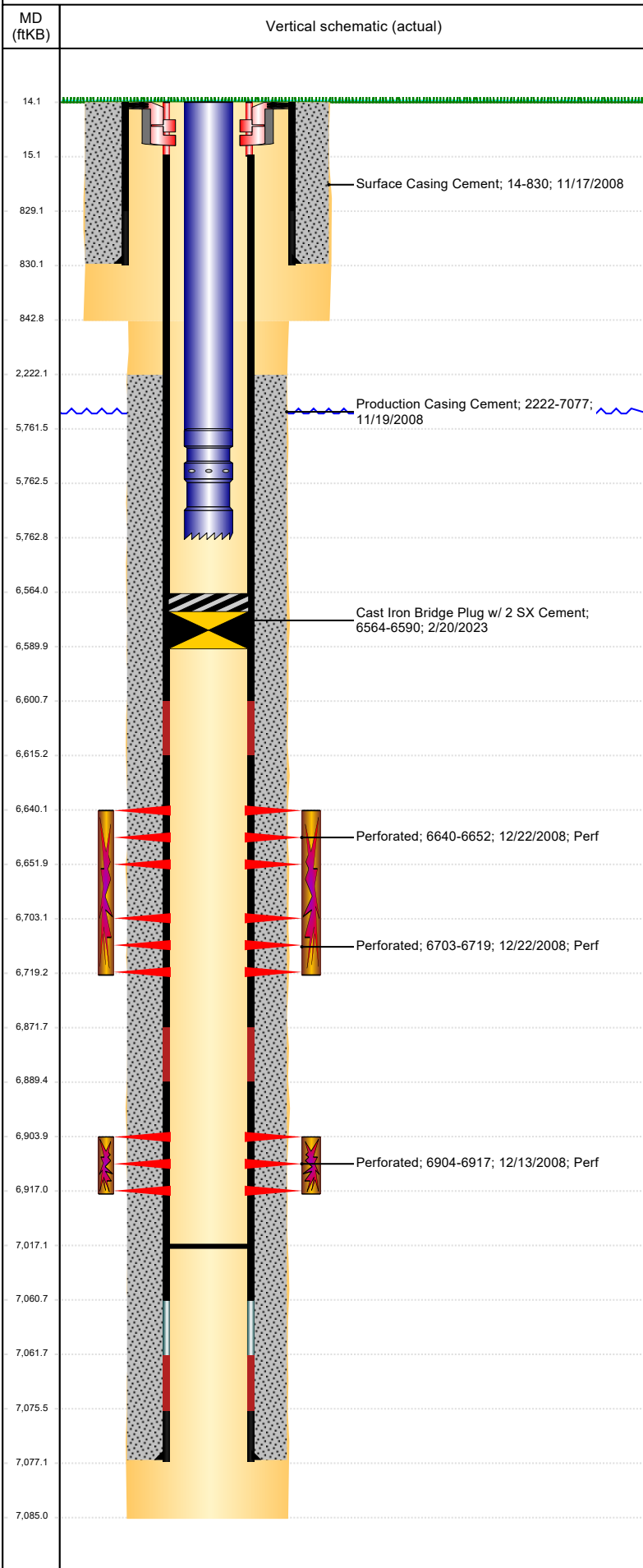




# P&A Wellbore For State

Well Name: THOMPSON C28-22

Land, Original Hole, 3/13/2023 4:37:04 PM



Well Header									
Surface UWI 0512329037		Business Unit Rockies		Gov Auth Dist		Prod Tree Loc Land			
Orig. KB to Gnd (ft) 14.00		Original Spud Date 11/16/2008		Abandon Date		Well Sub-Status TA		High Pres N	
Comment 318Ae LOCATION.									
Surface Location (Congressional)									
Quarter 3 NE	Quarter 4 SE	Section 28	Township 4	Twnshp N N	Range 64	Rng E/W W	Latitude (°) 40.28298479	Longitude (°) -104.55101855	
Wellbore Sections									
Section Des		Hole Size (in)		Act Top (ftKB)		Act Btm (ftKB)			
SURFACE		12 1/4		14.0		843.0			
PRODUCTION		7 7/8		843.0		7,085.0			
Casing Strings									
Csg Des		Run Date		OD (in)	Wt/Len (lb/ft)	Grade	Top Depth (MD) (ftKB)	Set Depth (MD) (ftKB)	
Surface		11/17/2008		8 5/8	24.00	J-55	14	830	
Production Casing		11/19/2008		4 1/2	11.60	M-80	14	7077	
Cement									
Des				Start Date		Top (ftKB)		Btm (ftKB)	
Surface Casing Cement				11/17/2008		14.0		830.0	
Production Casing Cement				11/19/2008		2,222.0		7,077.0	
Zone Statuses									
Zone Name	Status Date	Status	Fluid Type	Job			Prod Method		
CODELL	1/3/2009	PR		DRILLING/COMPLETION - ORIGINAL, 11/15/2008 19:00					
CODELL	2/12/2010	PR	Water				Flowing		
NIOBRARA	2/12/2010	PR	Water				Flowing		
NIOBRARA	11/29/2016	SI							
Perforation Data									
Linked Zone		Explosive Type	Entered Shot Total	Top (ftKB)	Btm (ftKB)	Date			
NIOBRARA, Original Hole		A	24	6,640.0	6,652.0	12/22/2008			
NIOBRARA, Original Hole		B	32	6,703.0	6,719.0	12/22/2008			
CODELL, Original Hole		01	52	6,904.0	6,917.0	12/13/2008			
Stimulation Intervals									
Zone			Start Date		Top (ftKB)		Btm (ftKB)		
NIOBRARA, Original Hole			12/22/2008		6,640.0		6,719.0		
CODELL, Original Hole			12/22/2008		6,904.0		6,917.0		
Other In Hole									
Run Date		Des		Make	OD (in)	Top (ftKB)	Btm (ftKB)		
2/20/2023		Cast Iron Bridge Plug w/ 2 SX Cement			3.99	6,564.0	6,590.0		
Logs									
Date		Type				Depth Top (MD) (ftKB)	Btm (ftKB)		
11/19/2008		Caliper/Comp. Density/Neutron/GR/SP/ML				2,650	7,084.0		
11/19/2008		DIL/GR/SP/Caliper				830	7,084.0		
12/5/2008		CBL/CCL/GR				2,100	7,050.0		
Plug Back Total Depths									
Date		Type		Com			PBSD (ftKB)		
11/19/2008		FLOAT COLLAR					7,062		
2/18/2009		PLUG REMNANTS					7,017		