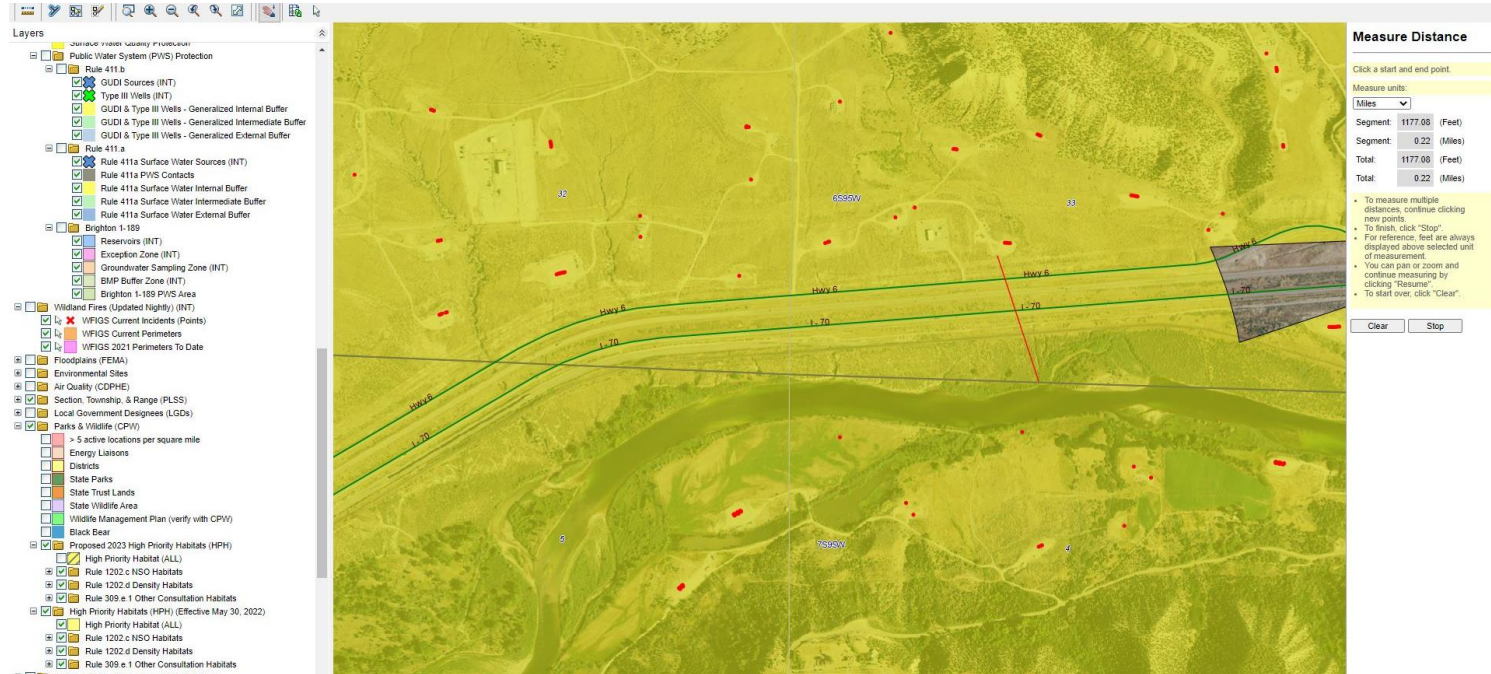


# Storm Water Management and Erosion control

## Location Name: TEP ROCKY MOUNTAIN LLC CLOUGH-66S95W /33SESW

### Location #: 334877



**Location Overview: Location is approximately 392 yards from the Colorado River. The location is in a high priority habitat area.**  
**Section/Township/Range: 33 6S95W**



**Storm water Management and Erosion control**  
**Location Name: TEP ROCKY MOUNTAIN LLC CLOUGH-66S95W /33SESW**  
**Location #: 334877**



**North West corner of location.**



**North East corner of location.**



**South West corner of location.**



**South East corner of location.**



**Storm water Management and Erosion control**  
**Location Name: TEP ROCKY MOUNTAIN LLC CLOUGH-66S95W /33SESW**  
**Location #: 334877**



**Photo #9210 Spill prevention and control BMPs not being implemented**



**Photo #9216 Spill prevention and control BMPs not being implemented**



**Storm water Management and Erosion control**  
**Location Name: TEP ROCKY MOUNTAIN LLC CLOUGH-66S95W /33SESW**  
**Location #: 334877**



**Photo #9206 Run on to location is not being controlled.**



**Photo #9207 Run on to location is not being controlled.**



**Storm water Management and Erosion control**  
**Location Name: TEP ROCKY MOUNTAIN LLC CLOUGH-66S95W /33SESW**  
**Location #: 334877**



**Photo #9221 Sediment trap insufficient. Sediment is being transport off location.**



**Photo #9222 Sediment trap insufficient. Sediment is being transport off location.**



**Storm water Management and Erosion control**  
**Location Name: TEP ROCKY MOUNTAIN LLC CLOUGH-66S95W /33SESW**  
**Location #: 334877**



**Photo #9223 Sediment trap insufficient. Sediment is being transport off location.**



**Photo #9224 Sediment trap insufficient. Sediment is being transport off location.**



**Storm water Management and Erosion control**  
**Location Name: TEP ROCKY MOUNTAIN LLC CLOUGH-66S95W /33SESW**  
**Location #: 334877**



**Photo #9217 Location lacks stabilization.**



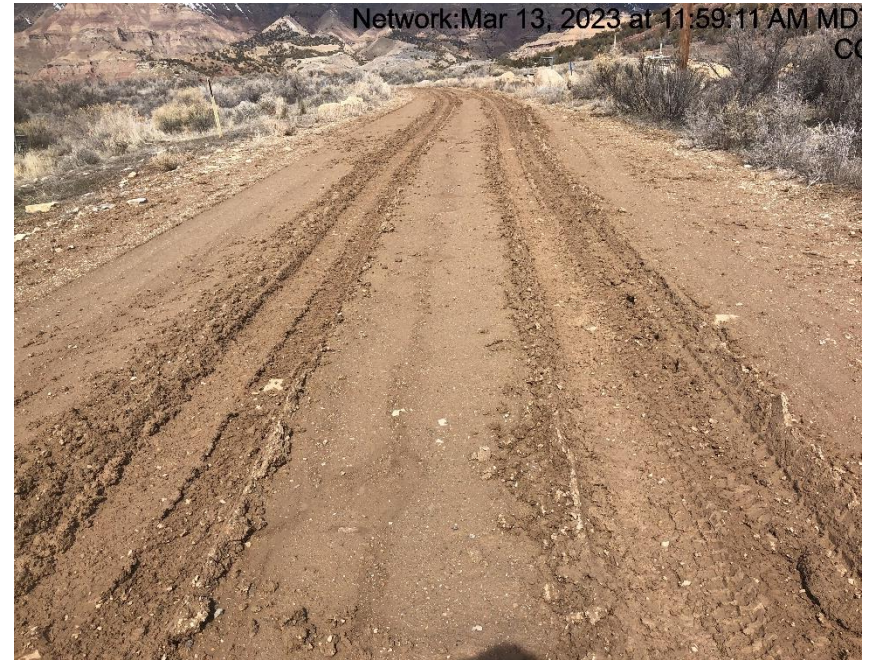
**Photo #9218 Location lacks stabilization.**



**Storm water Management and Erosion control**  
**Location Name: TEP ROCKY MOUNTAIN LLC CLOUGH-66S95W /33SESW**  
**Location #: 334877**



**Photo #9209 Location lacks stabilization**



**Photo #9204 Insufficient tracking BMP at entrance to location to minimize the transport of sediment.**



**Storm water Management and Erosion control**  
**Location Name: TEP ROCKY MOUNTAIN LLC CLOUGH-66S95W /33SESW**  
**Location #: 334877**



**Photo #9205 Insufficient tracking BMP at entrance  
to location to minimize the transport of sediment.**



# Storm water Management and Erosion control

## Access Road/Assoc. Location Name: TEP ROCKY MOUNTAIN LLC CLOUGH-66S95W /33SESW

### Access Road/Assoc. Location #: 334877



Access Road overview Access road is approximately 190 yards to nearest road intersection.

Section/Township/Range: 33 6S95W



## Storm water Management and Erosion control

Access Road/Assoc. Location Name: TEP ROCKY MOUNTAIN LLC CLOUGH-66S95W /33SESW

Access Road/Assoc. Location #: 334877



Access road and Location entrance.



Photo #9228 Access road lack stabilization.



## Storm water Management and Erosion control

Access Road/Assoc. Location Name: TEP ROCKY MOUNTAIN LLC CLOUGH-66S95W /33SESW

Access Road/Assoc. Location #: 334877



Photo #9229 Access road lacks stabilization.



Photo #9230 Insufficient tracking BMP at entrance to access road.