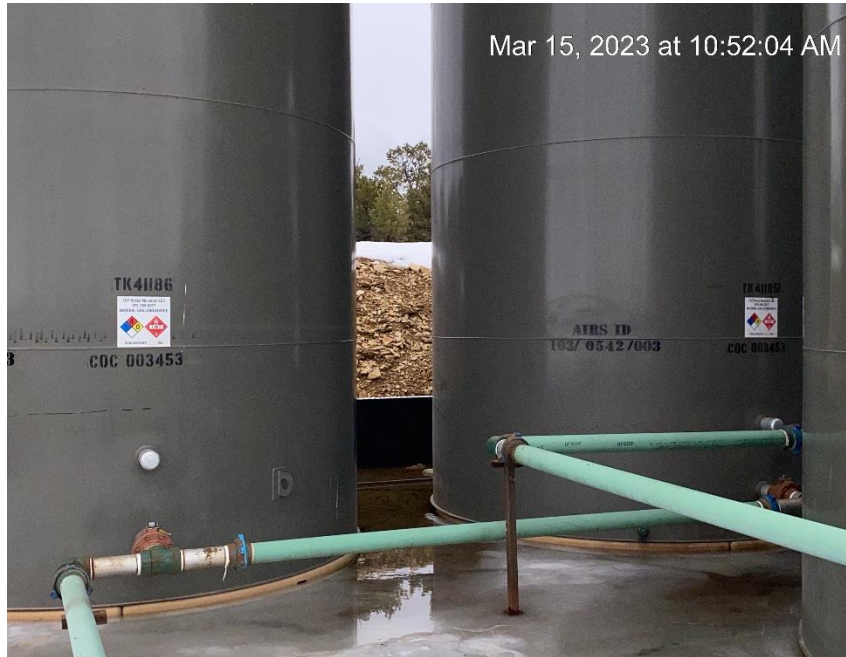


**TEP Rocky Mountain LLC
Federal RG41-18-297
Location #316591**



Tank labels missing tank capacity



Open end loadline

**TEP Rocky Mountain LLC
Federal RG41-18-297
Location #316591**



Unused equipment



Debris. Open end tank valve

TEP Rocky Mountain LLC
Federal RG41-18-297
Location #316591

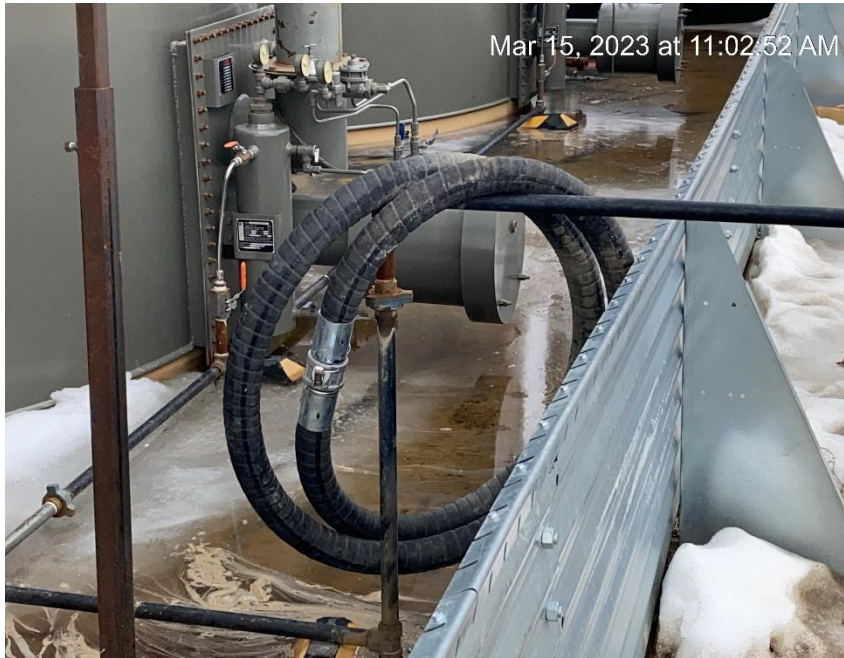


Unused equipment



Debris

**TEP Rocky Mountain LLC
Federal RG41-18-297
Location #316591**



Unused equipment



Debris



**TEP Rocky Mountain LLC
Federal RG41-18-297
Location #316591**



Debris



Unused equipment

**TEP Rocky Mountain LLC
Federal RG41-18-297
Location #316591**



Stained soil at separator

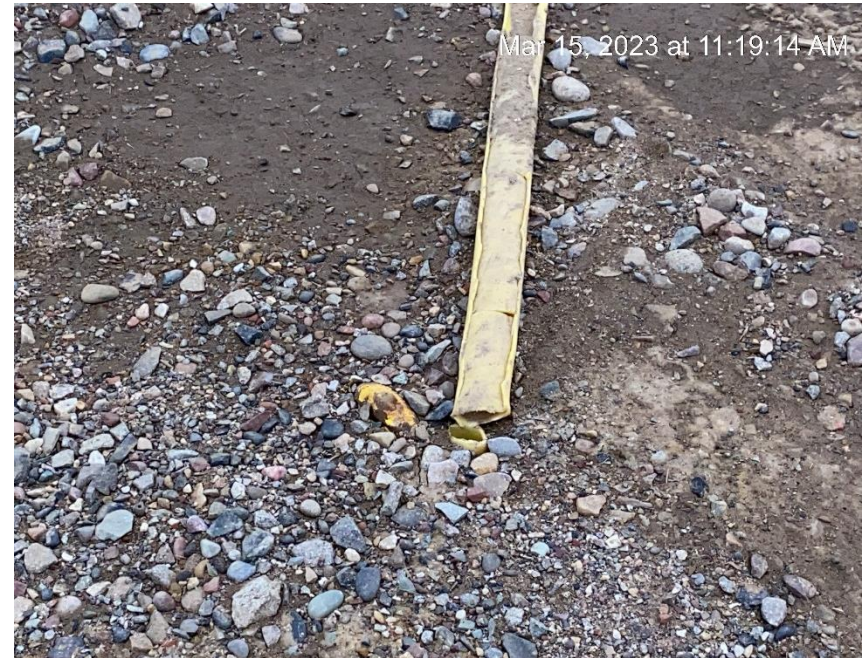


Debris. Unused equipment.

**TEP Rocky Mountain LLC
Federal RG41-18-297
Location #316591**

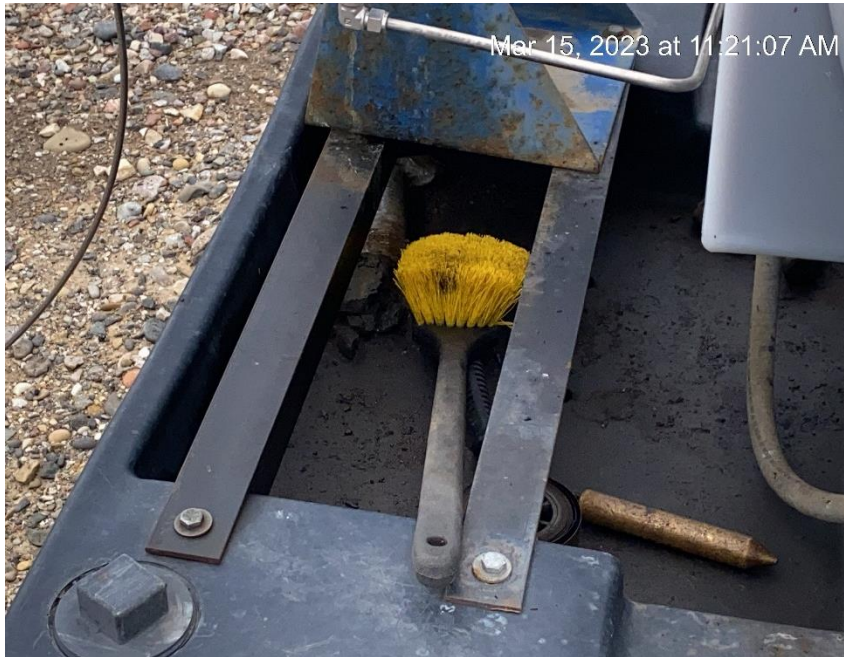


Debris, unused equipment



Unmarked anchor

**TEP Rocky Mountain LLC
Federal RG41-18-297
Location #316591**



Debris



Stained soils at wellhead

**TEP Rocky Mountain LLC
Federal RG41-18-297
Location #316591**



Stained soils around wellhead



Open end line without wildlife protection

**TEP Rocky Mountain LLC
Federal RG41-18-297
Location #316591**



Misc wellhead signs on the ground



To entrance to location