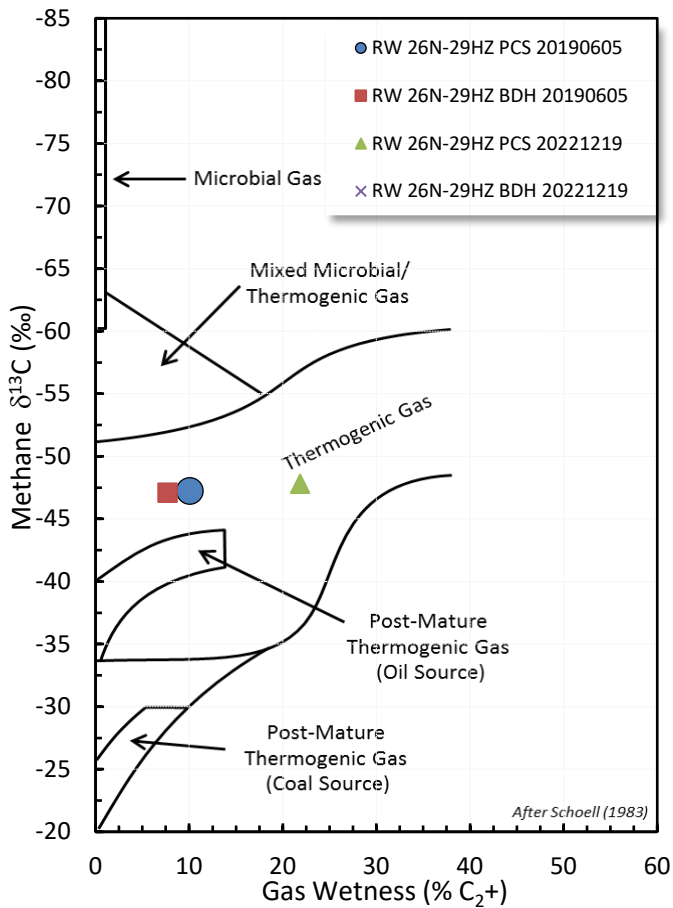
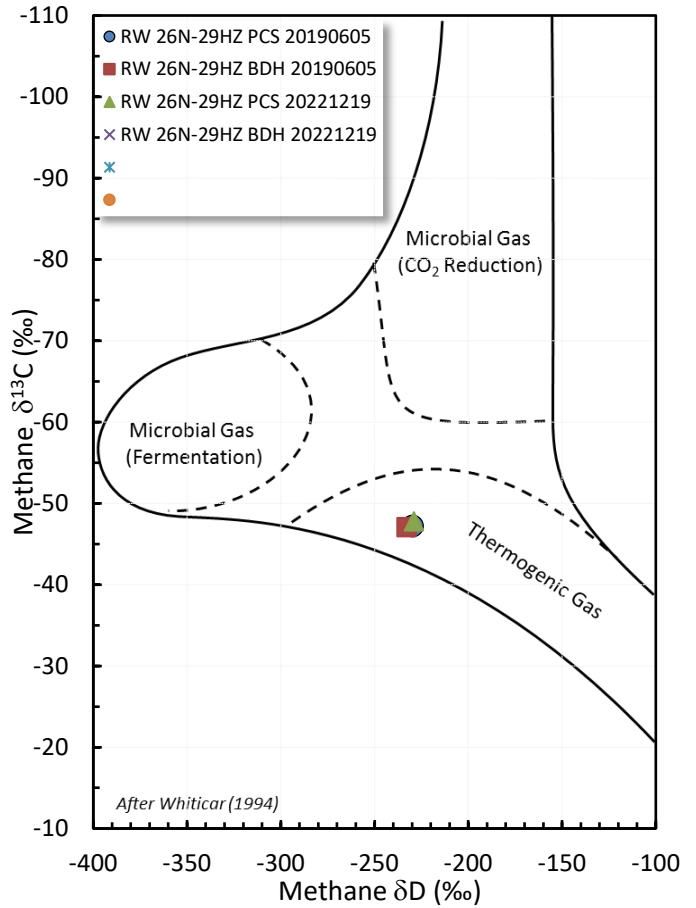


# Stable Isotope Interpretive Plots

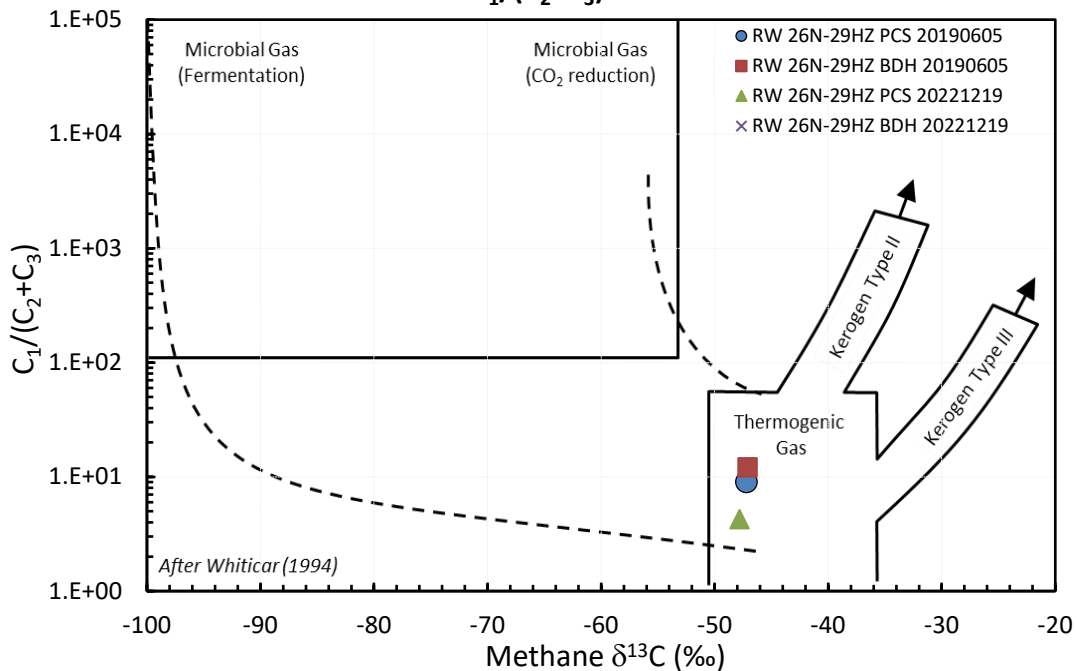
## Methane vs Gas Wetness Genetic Classification



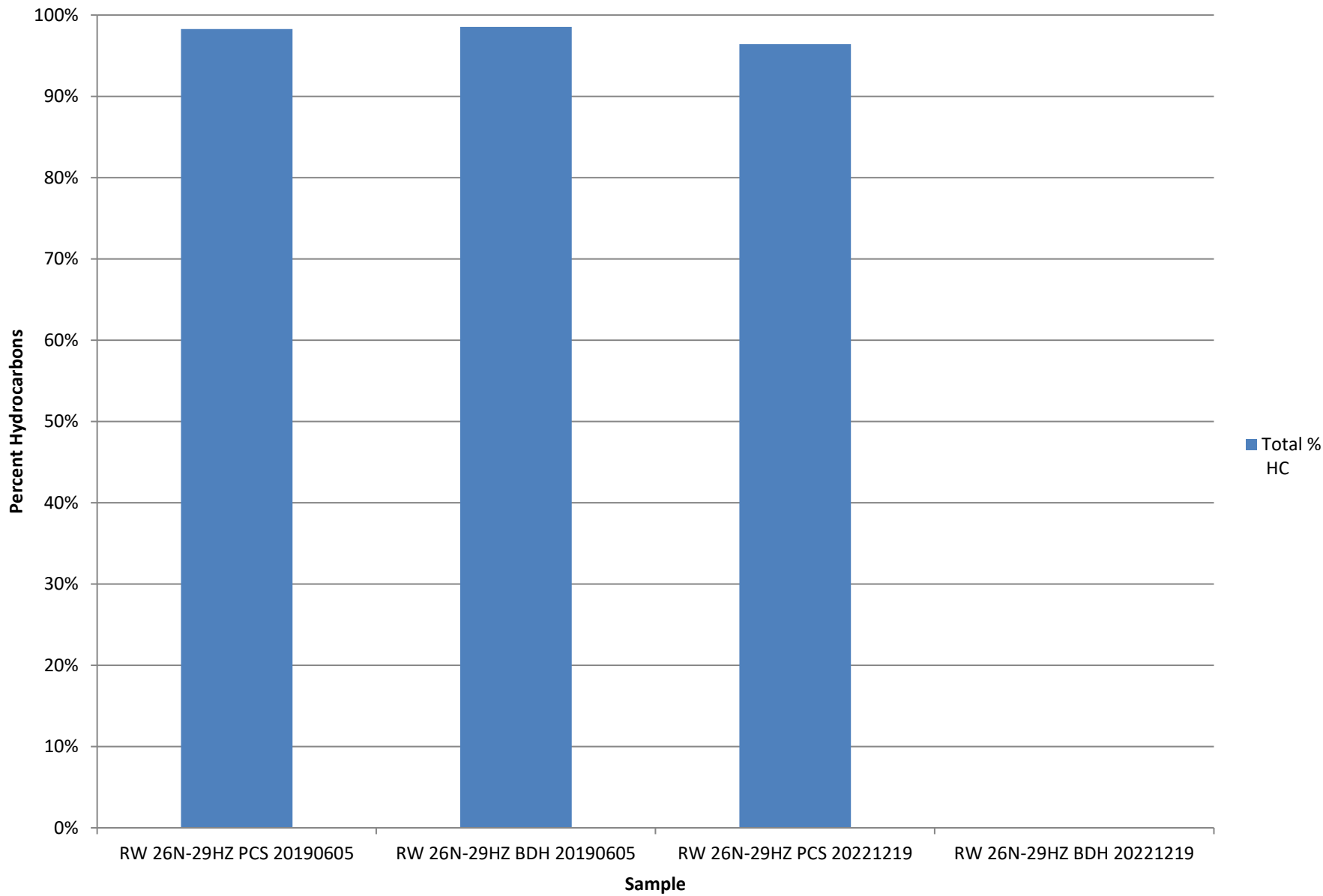
## Methane $\delta^{13}\text{C}$ vs $\delta\text{D}$ Genetic Classification Plot



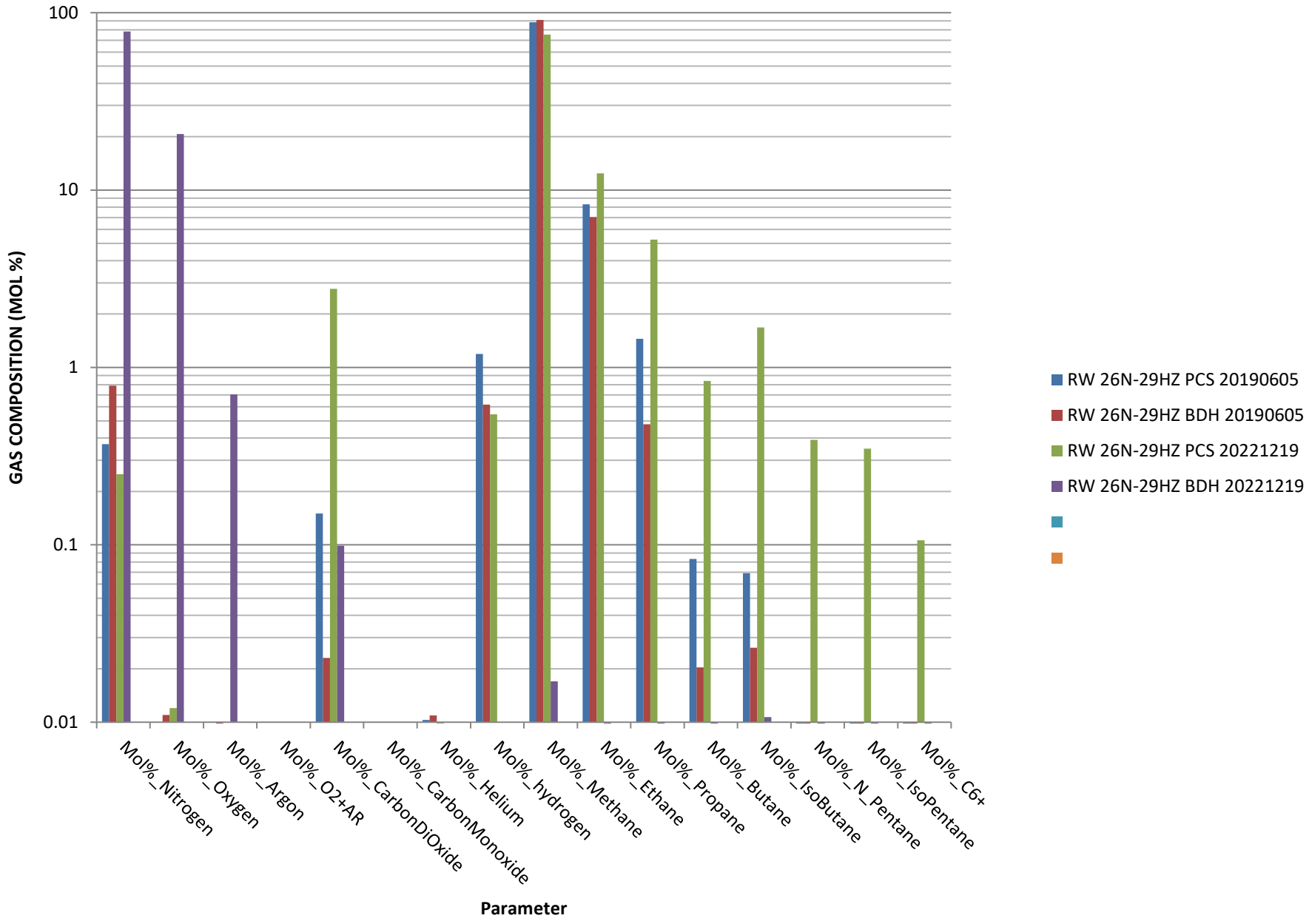
## Methane $\delta^{13}\text{C}$ vs $\text{C}_1/(\text{C}_2+\text{C}_3)$ Genetic Classification Plot



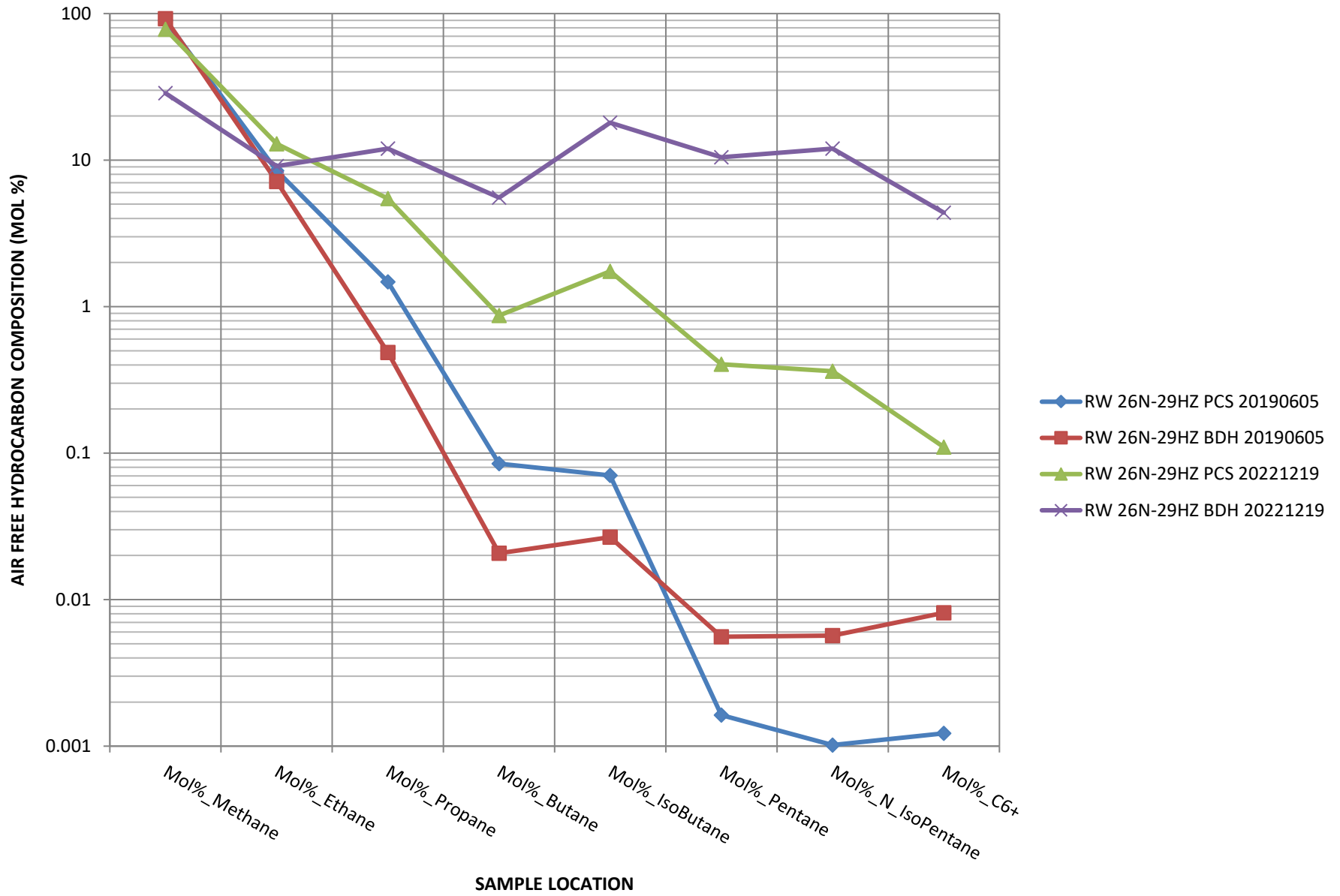
# Total Percent Hydrocarbons

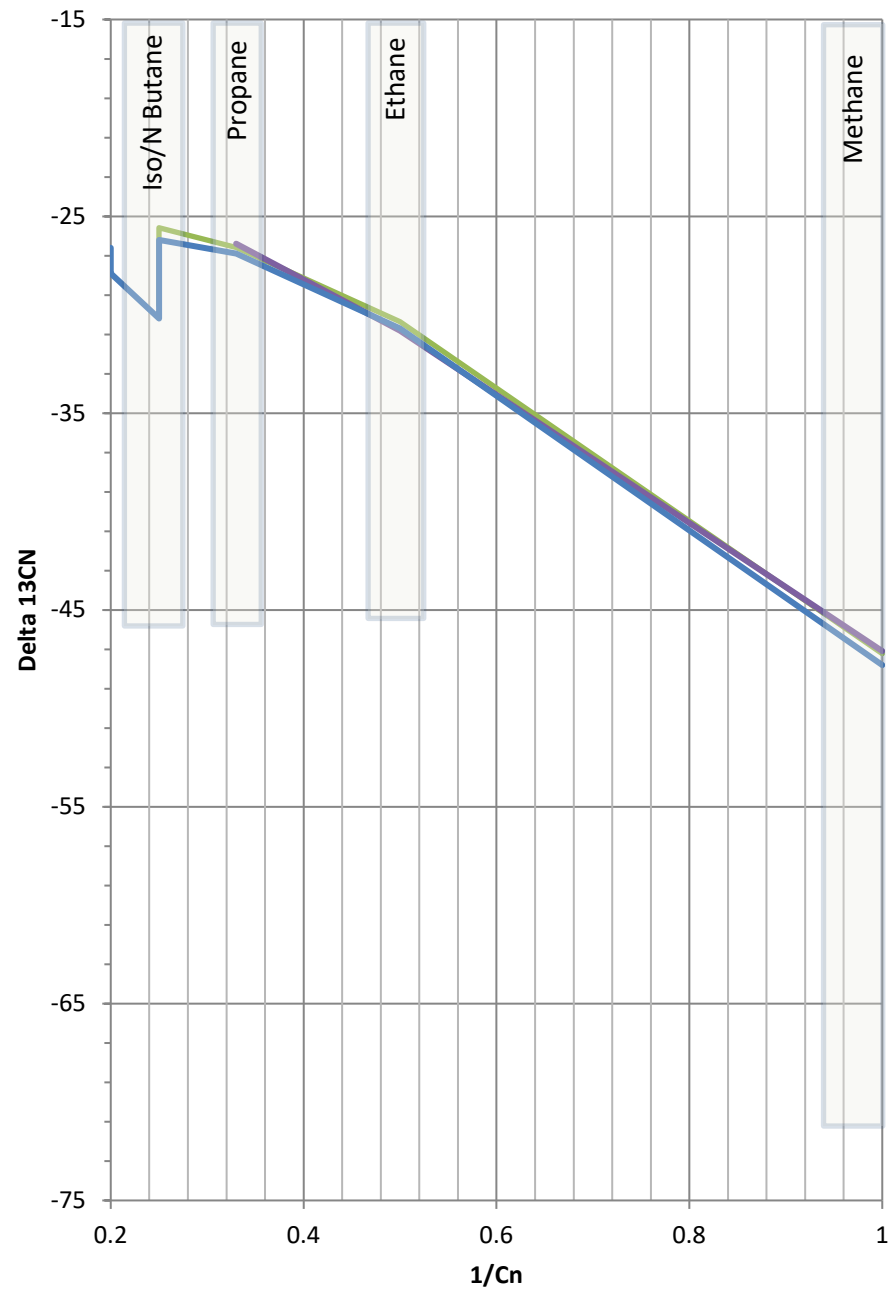


# GAS COMPOSITION



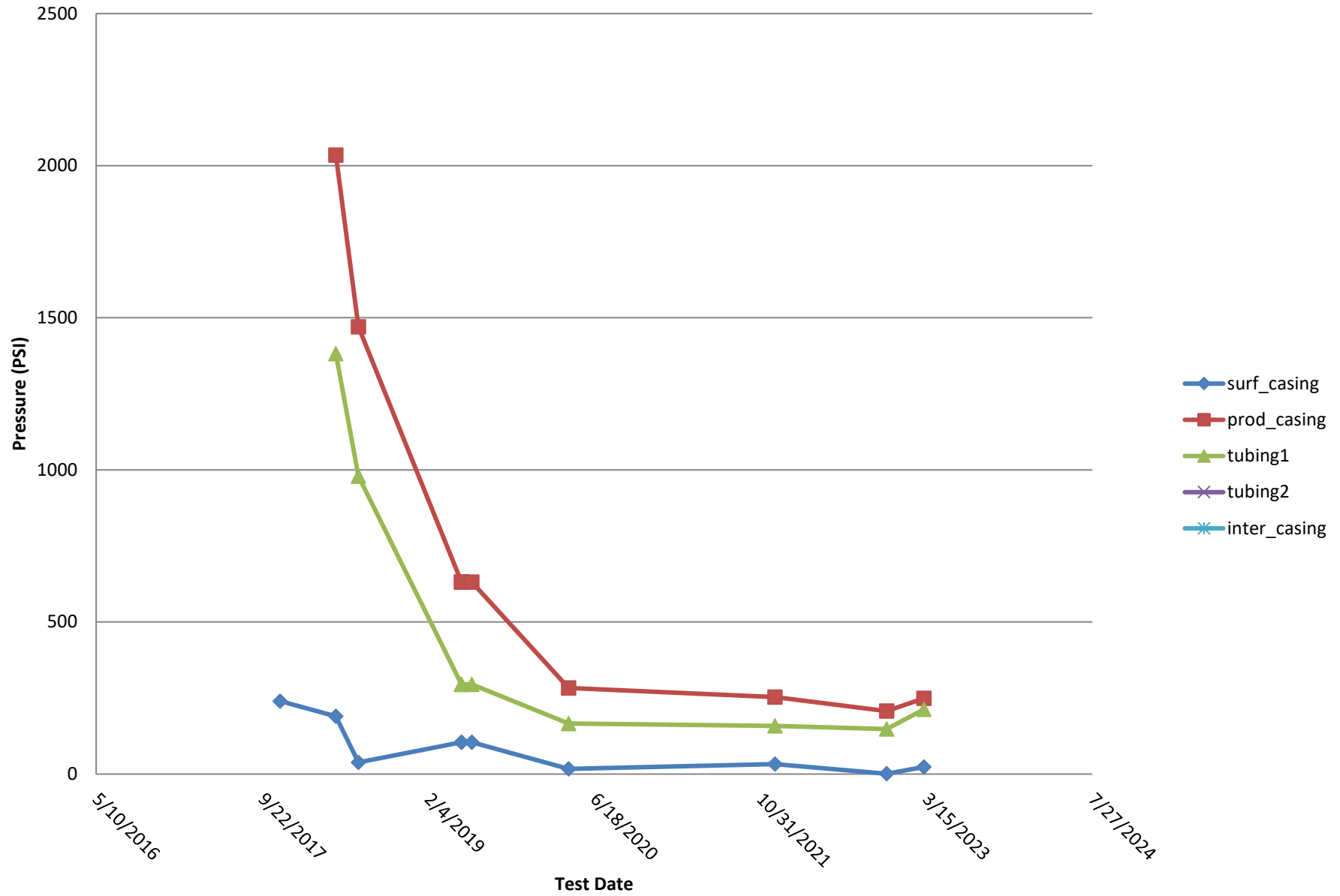
# HYDROCARBON COMPOSITION



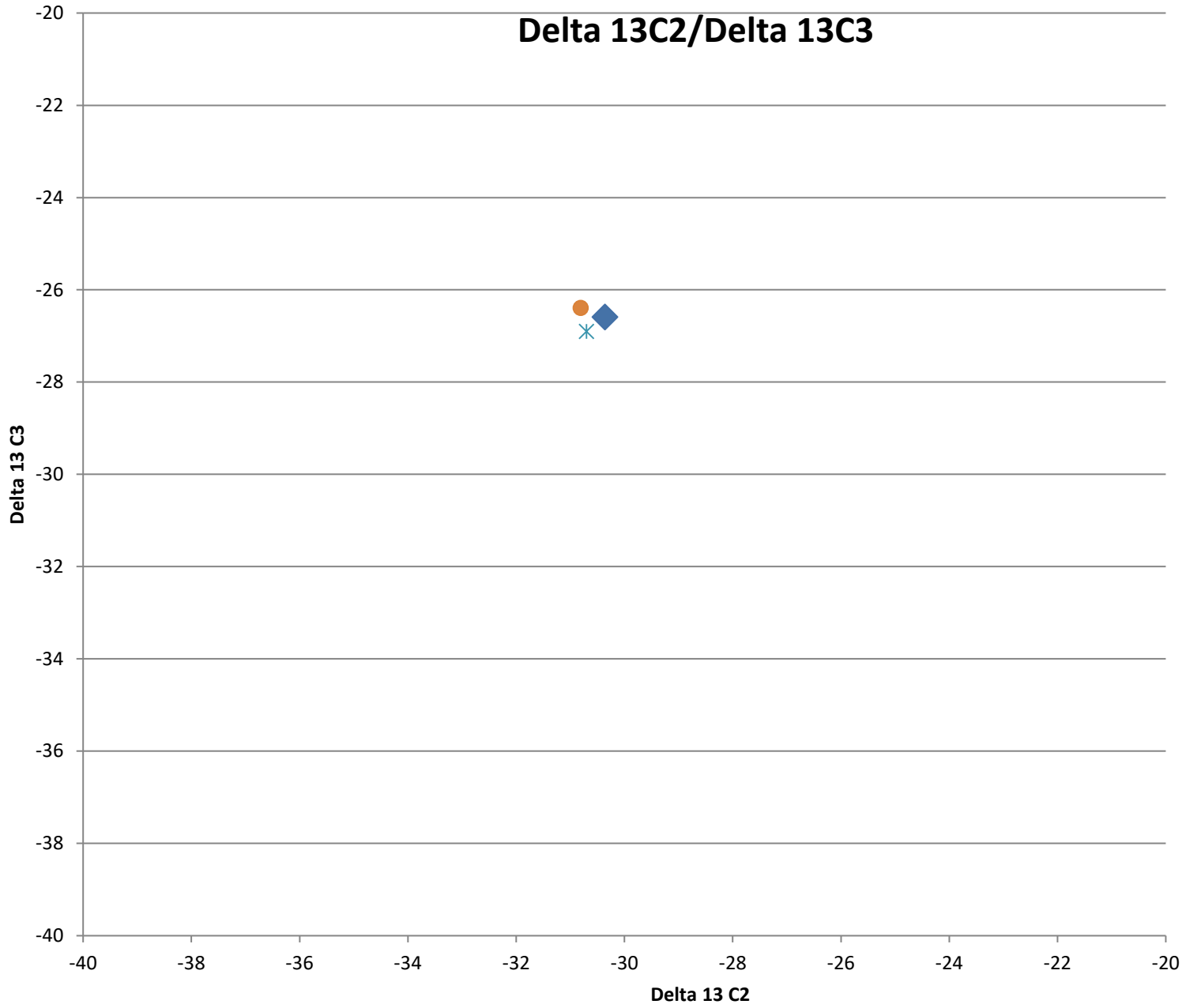


- RW 26N-29HZ PCS
- RW 26N-29HZ BDH
- RW 26N-29HZ PCS
-

# Bradenhead Test Summary

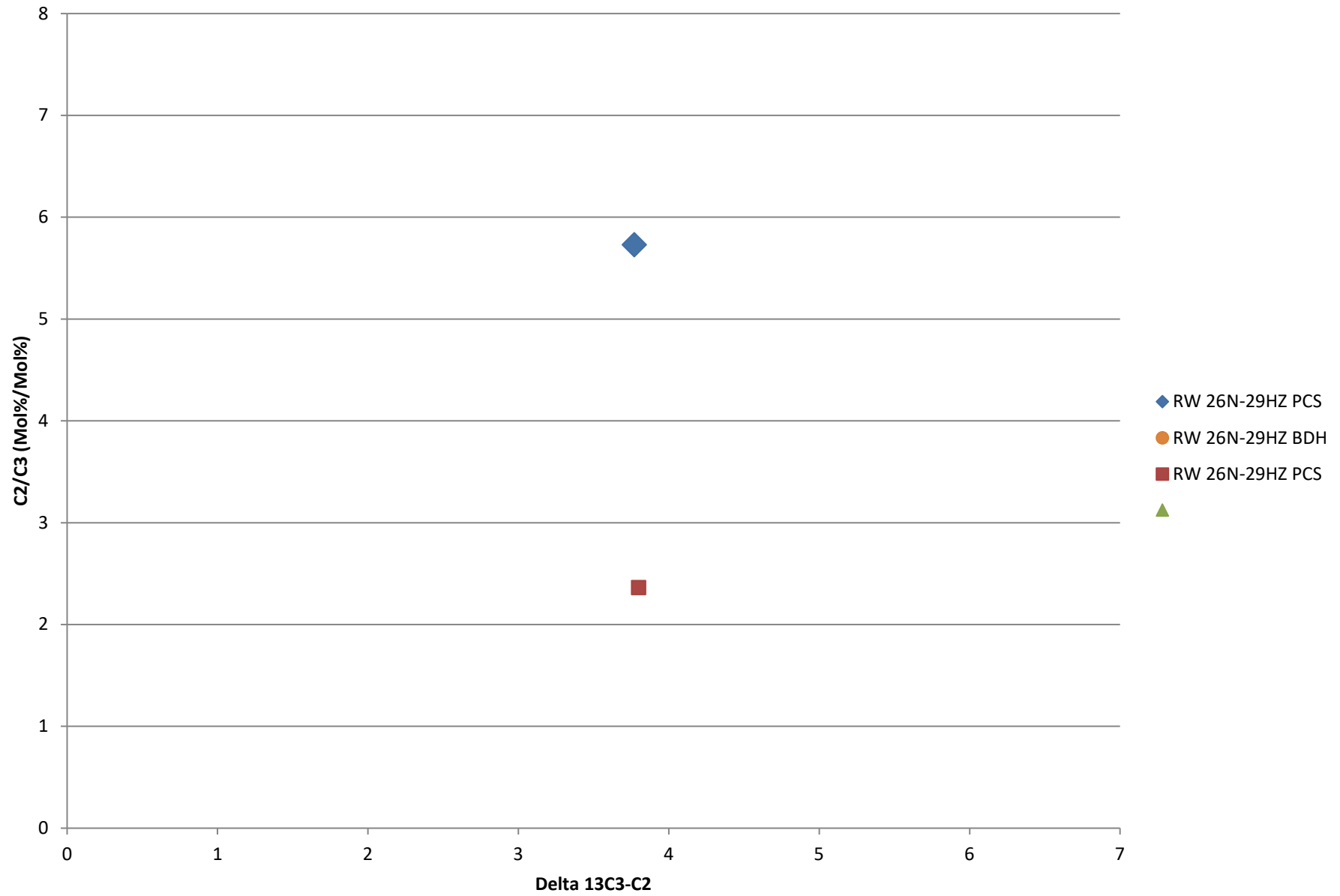


# Delta 13C2/Delta 13C3



- ◆ RW 26N-29HZ PCS
- RW 26N-29HZ BDH
- \* RW 26N-29HZ PCS
-

# Delta13 C2/C3 vs. Delta 13C3-C2



# Delta 13 IC4/ Delta NC4

