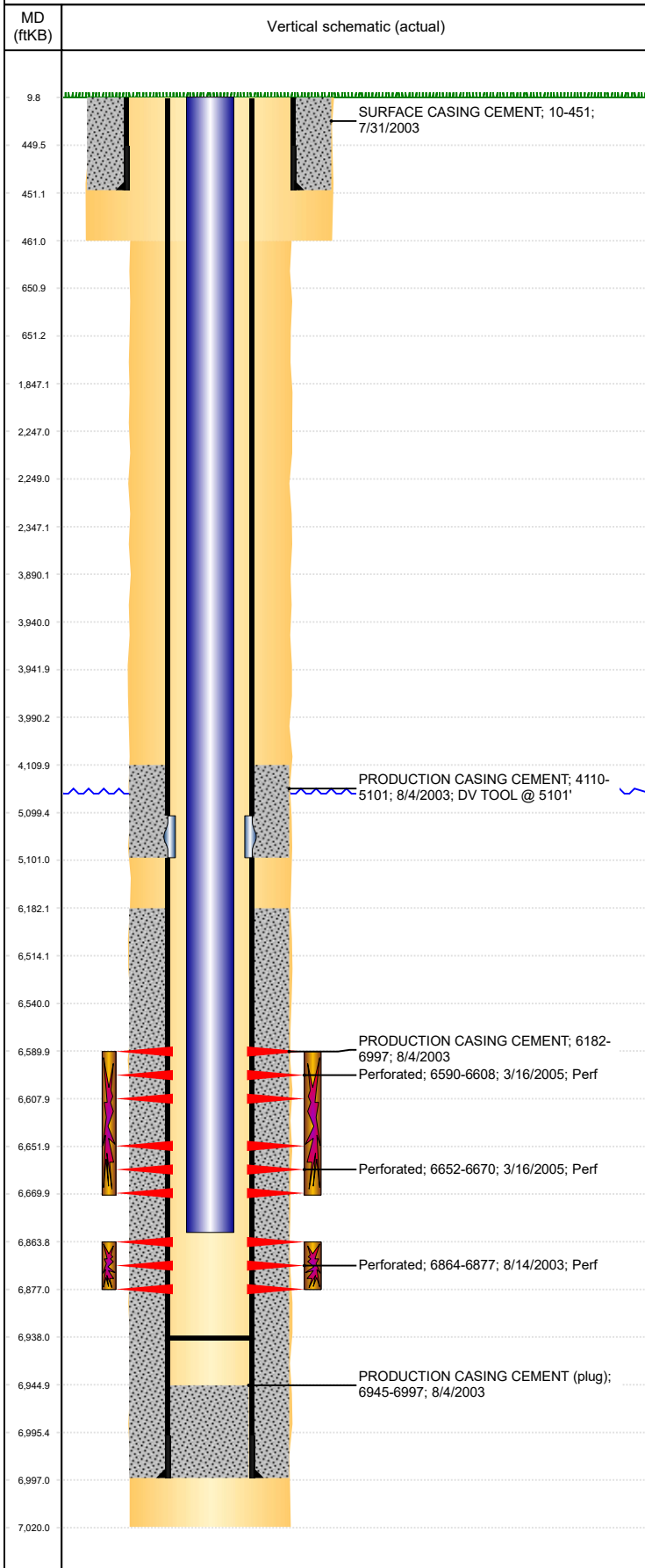




P&A Wellbore For State

Well Name: ALOYSIUS C34-19

Land, Original Hole, 3/16/2023 12:53:38 PM



Well Header

Surface UWI 0512321434	Business Unit Rockies	Gov Auth Dist	Prod Tree Loc Land
Orig. KB to Gnd (ft) 10.00	Original Spud Date 7/31/2003	Abandon Date	Well Sub-Status PR
High... N			

Comment

DV tool @ 5099

Surface Location (Congressional)

Qtr 3 NE	Qtr 4 NW	Section 34	Twnshp 4	Twnsh... N	Range 64	Rng E... W	Latitude (°) 40.27259382 1	Longitude (°) -104.541770459
-------------	-------------	---------------	-------------	---------------	-------------	---------------	----------------------------------	---------------------------------

Wellbore Sections

Section Des	Hole Size (in)	Act Top (ftKB)	Act Btm (ftKB)
SURFACE	12 1/4	10.0	461.0
PRODUCTION	7 7/8	461.0	7,020.0

Casing Strings

Csg Des	Run Date	OD (in)	Wt/Len (lb/ft)	Grade	Top Depth (MD) (ftKB)	Set Depth (MD) (ftKB)
Surface	7/31/2003	8 5/8	24.00	J-55	10	451
Production Casing	8/4/2003	4 1/2	11.60	M-80	10	6997

Cement

Des	Start Date	Top (ftKB)	Btm (ftKB)
SURFACE CASING CEMENT	7/31/2003	10.0	451.0
PRODUCTION CASING CEMENT	8/4/2003	4,110.0	5,101.0
PRODUCTION CASING CEMENT	8/4/2003	6,182.0	6,997.0

Zone Statuses

Zone Name	Status Date	Status	Fluid Type	Job	Prod Method
CODELL	5/11/2005	PR	Oil	COMMINGLE ZONES, 5/10/2005 00:00	
CODELL	4/1/2010	PR	Oil	RE-FRAC, 3/18/2010 13:00	
NIOBRARA	3/26/2005	PR	Oil	RECOMPLETION, 3/15/2005 00:00	
NIOBRARA	5/11/2005	PR	Oil	COMMINGLE ZONES, 5/10/2005 00:00	

Perforation Data

Linked Zone	Explosive Type	Entered Shot Total	Top (ftKB)	Btm (ftKB)	Date
NIOBRARA, Original Hole	A	108	6,590.0	6,608.0	3/16/2005
NIOBRARA, Original Hole	B	108	6,652.0	6,670.0	3/16/2005
CODELL, Original Hole		52	6,864.0	6,877.0	8/14/2003

Stimulation Intervals

Zone	Start Date	Top (ftKB)	Btm (ftKB)
NIOBRARA, Original Hole	3/25/2005	6,590.0	6,670.0
CODELL, Original Hole	9/3/2003	6,864.0	6,877.0
CODELL, Original Hole	3/31/2010	6,864.0	6,877.0

Other In Hole

Run Date	Des	Make	OD (in)	Top (ftKB)	Btm (ftKB)

Logs

Date	Type	Depth Top (MD) (ftKB)	Btm (ftKB)
8/4/2003	COMPENSATED DENSITY	4,500	6,983.0
8/4/2003	INDUCTION	451	7,003.0
8/13/2003	CBL/CCL/GR	4,000	6,943.0

Plug Back Total Depths

Date	Type	Com	PBTD (ftKB)
3/19/2010	FILL	66' OF RAT HOLE	6,945
4/29/2010	FILL	61' OF RATHOLE	6,938