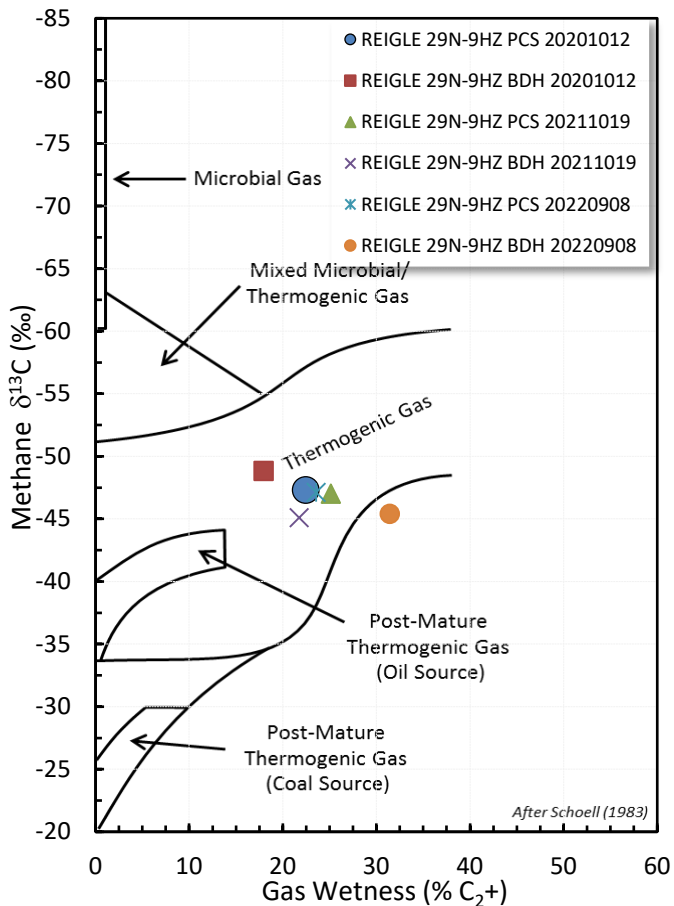
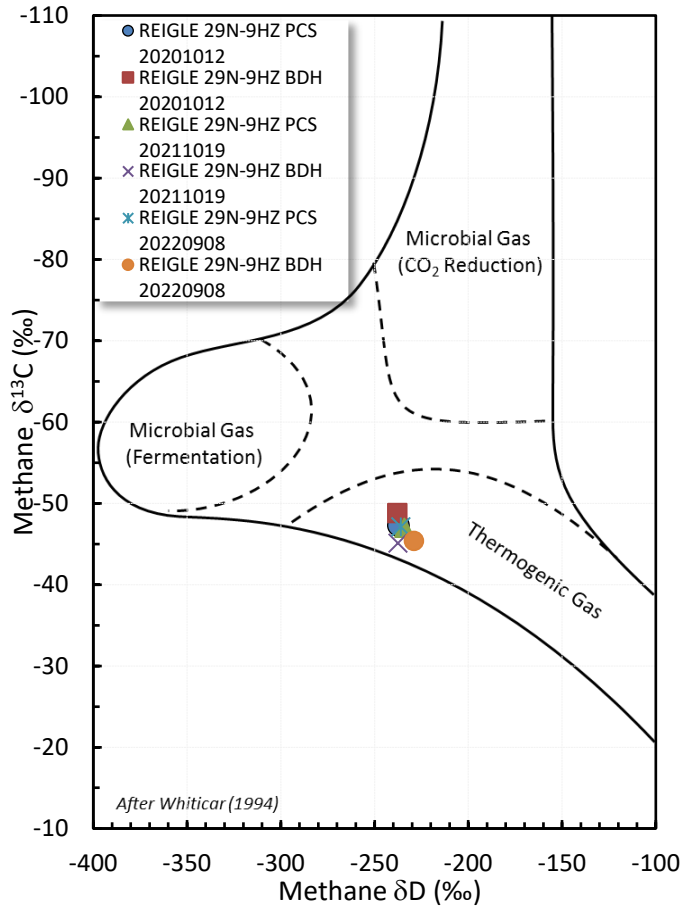


Stable Isotope Interpretive Plots

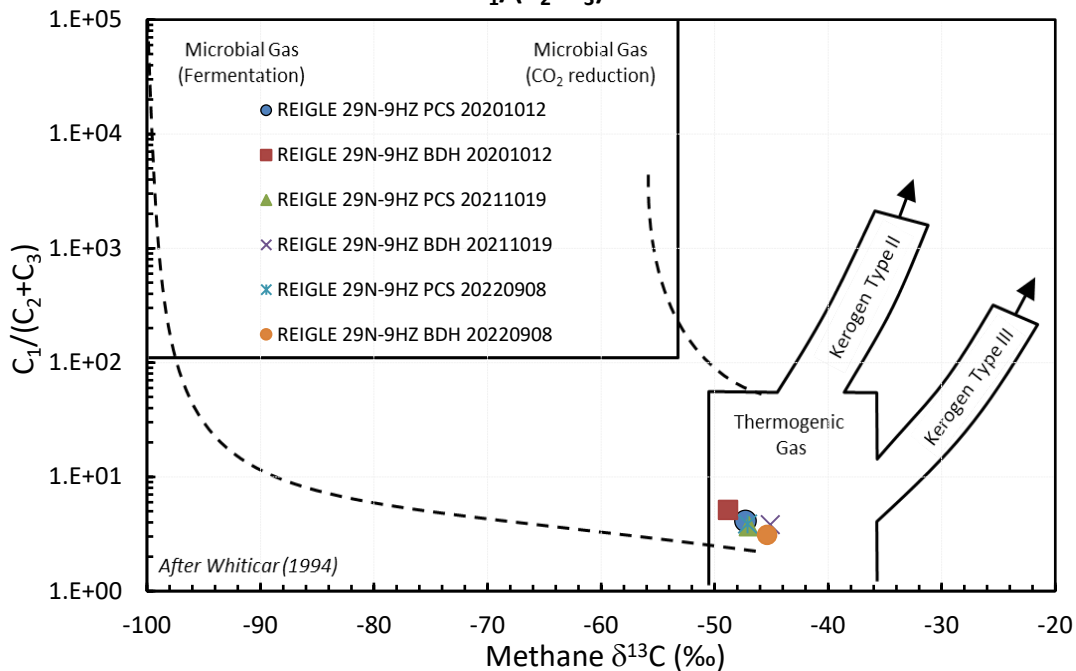
Methane vs Gas Wetness Genetic Classification



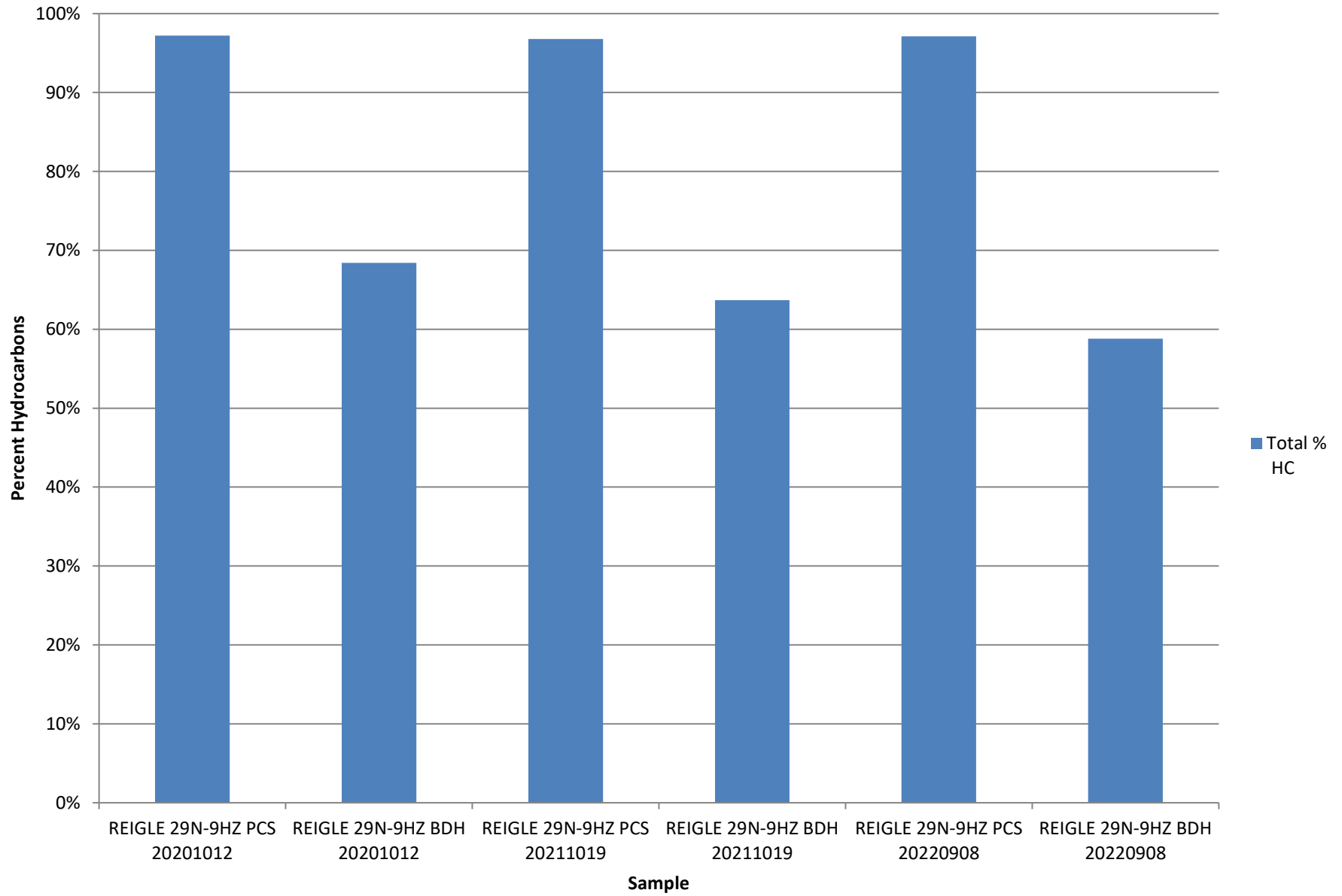
Methane $\delta^{13}\text{C}$ vs δD Genetic Classification Plot



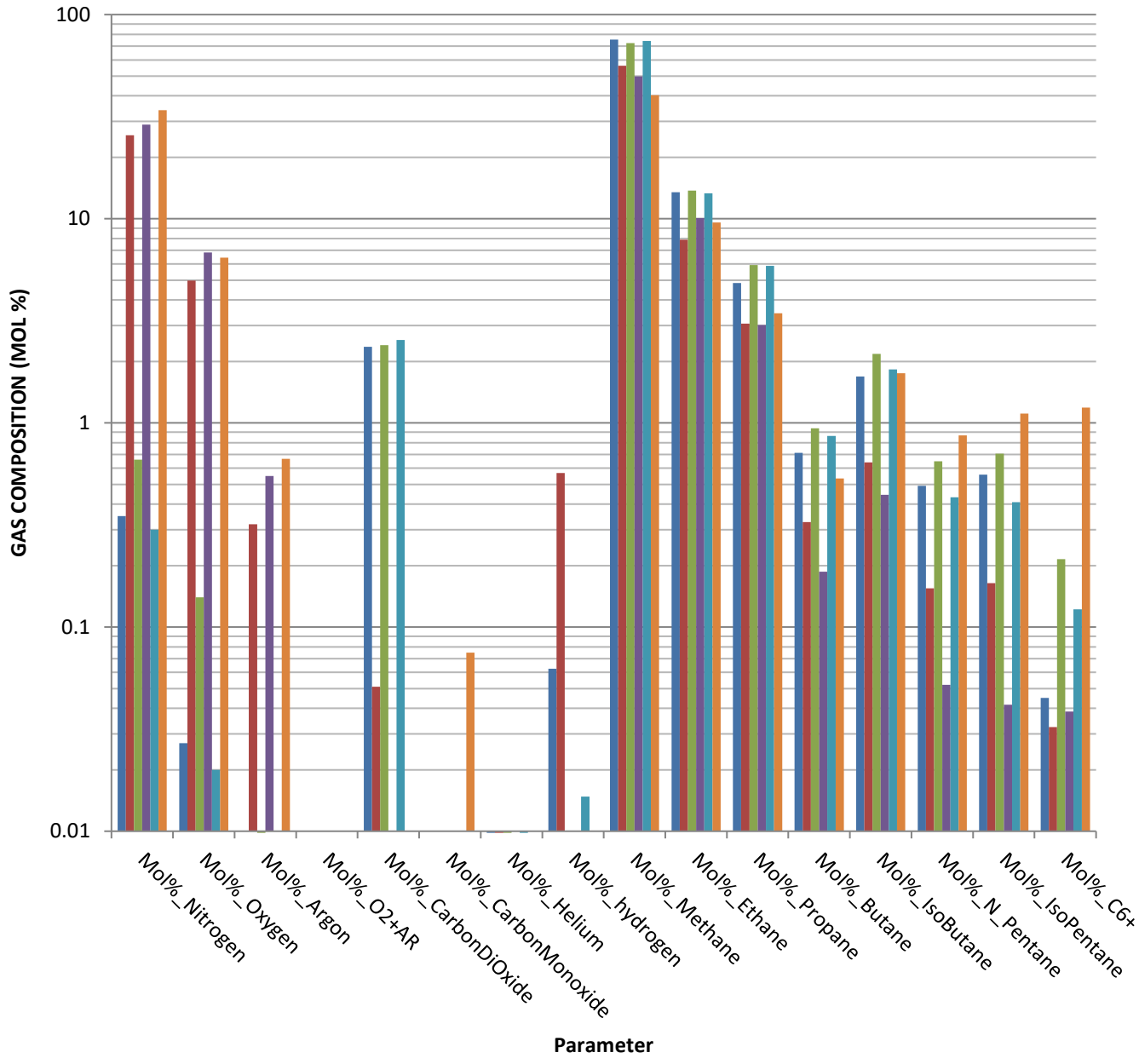
Methane $\delta^{13}\text{C}$ vs $\text{C}_1/(\text{C}_2+\text{C}_3)$ Genetic Classification Plot



Total Percent Hydrocarbons

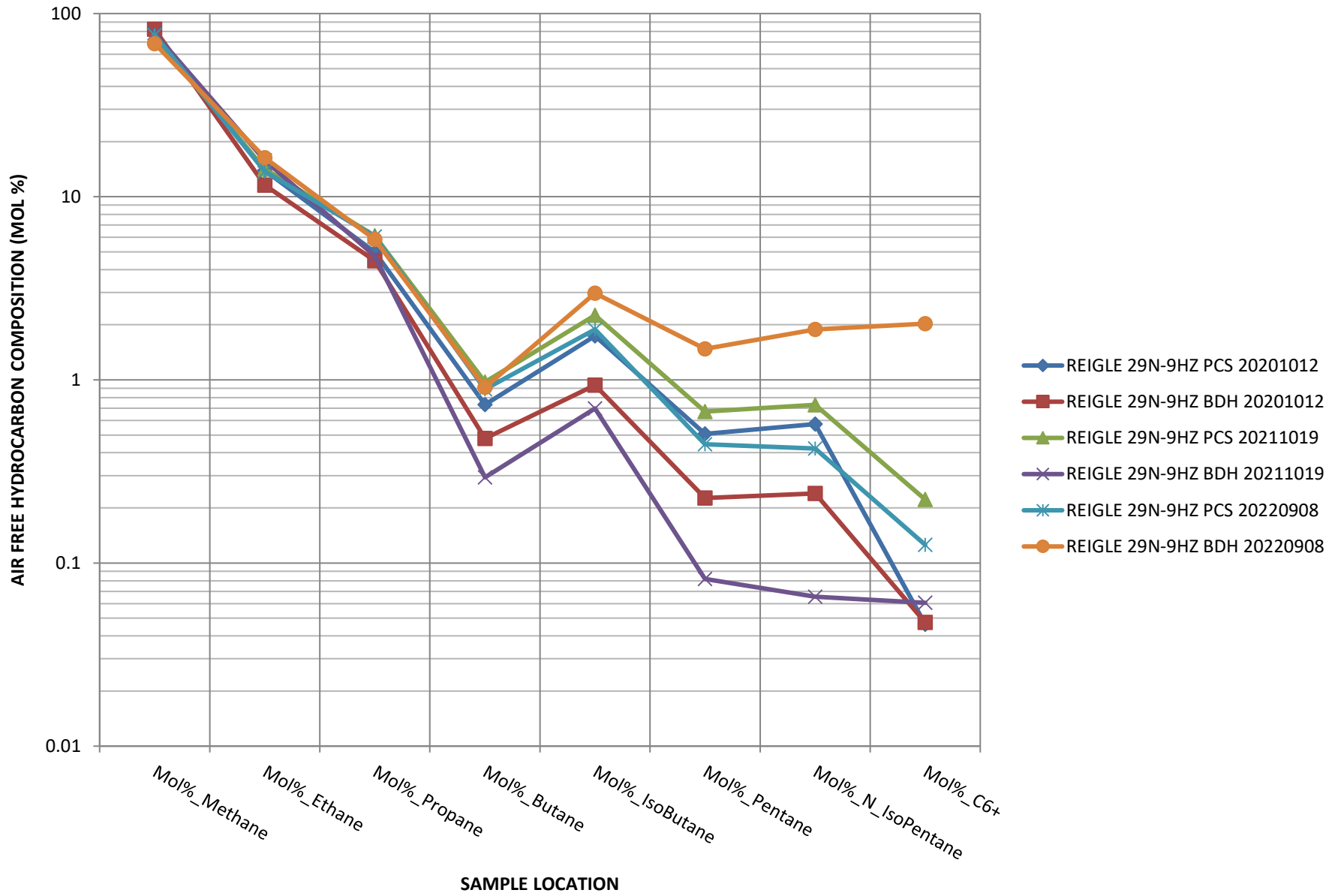


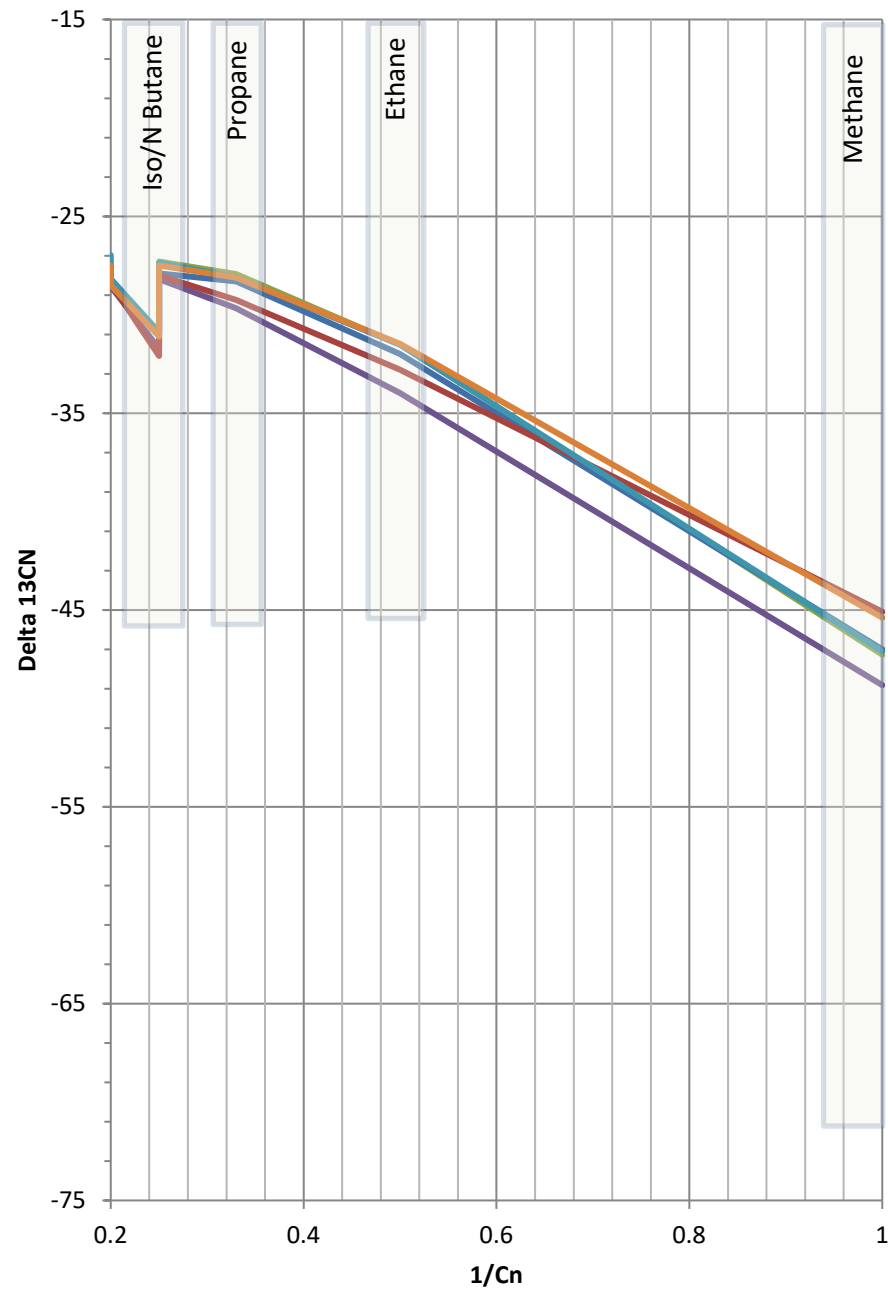
GAS COMPOSITION



- REIGLE 29N-9HZ PCS 20201012
- REIGLE 29N-9HZ BDH 20201012
- REIGLE 29N-9HZ PCS 20211019
- REIGLE 29N-9HZ BDH 20211019
- REIGLE 29N-9HZ PCS 20211019
- REIGLE 29N-9HZ PCS 20220908

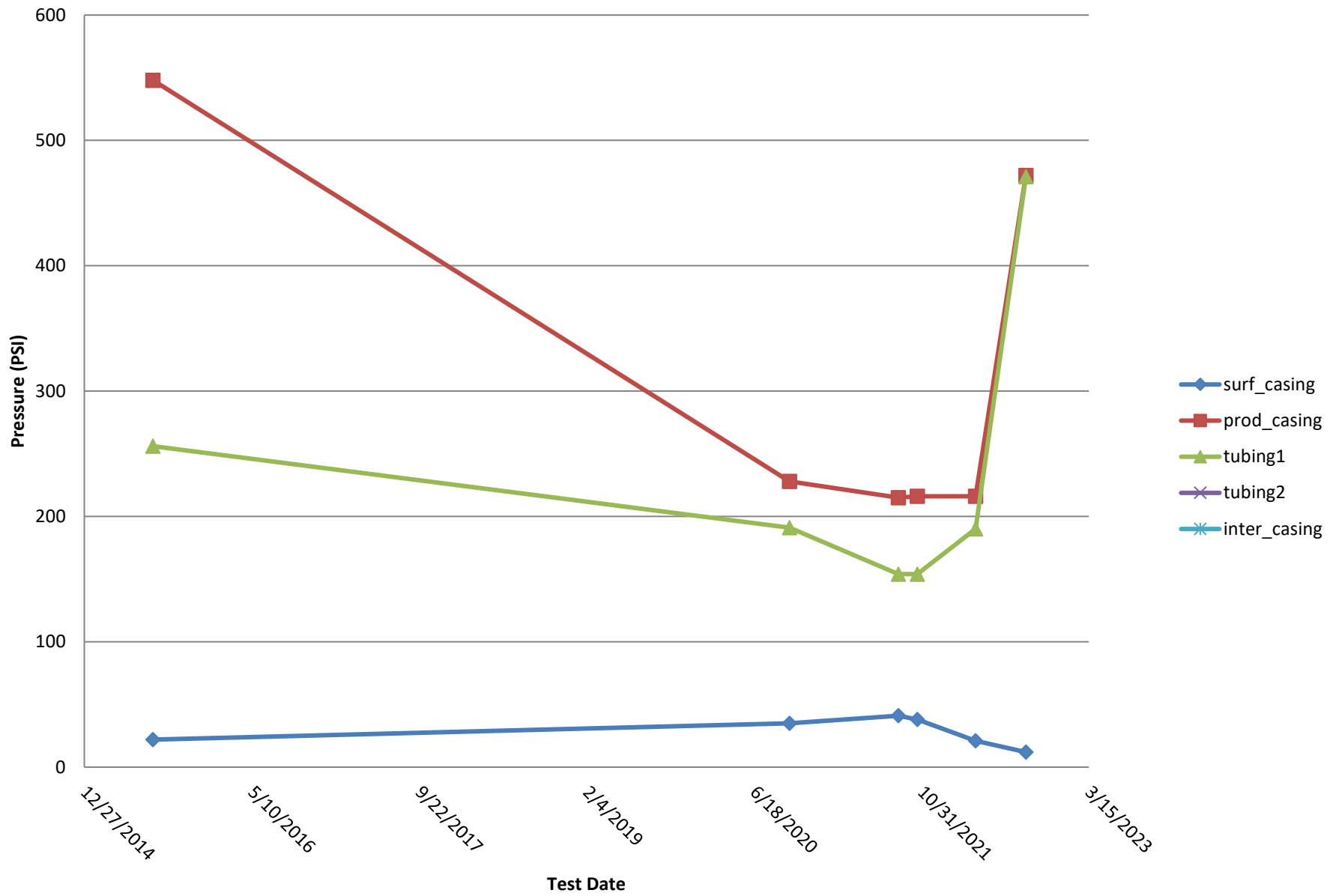
HYDROCARBON COMPOSITION



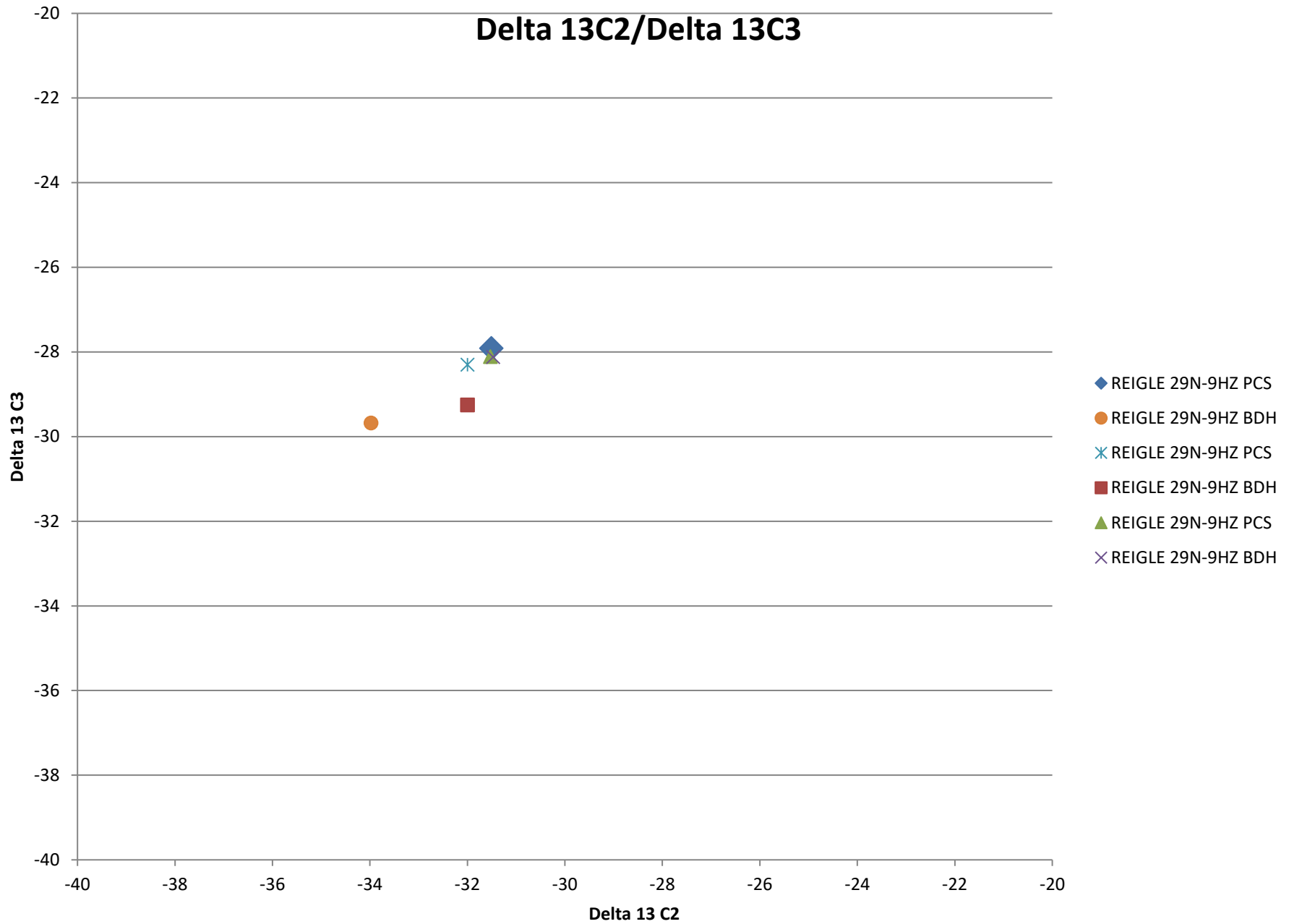


- REIGLE 29N-9HZ PCS
- REIGLE 29N-9HZ BDH
- REIGLE 29N-9HZ PCS
- REIGLE 29N-9HZ BDH
- REIGLE 29N-9HZ PCS
- REIGLE 29N-9HZ BDH

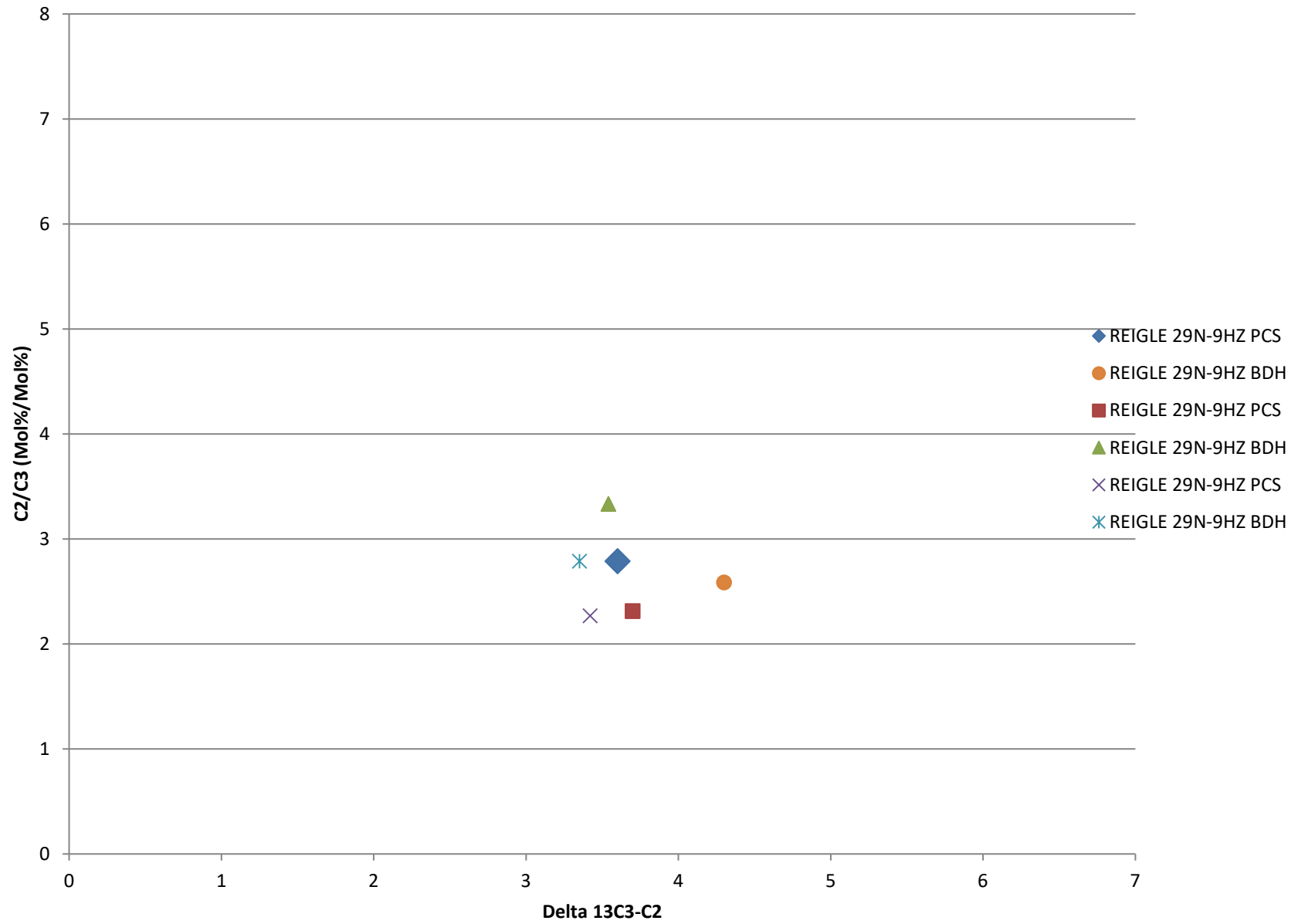
Bradenhead Test Summary



Delta 13C2/Delta 13C3



Delta13 C2/C3 vs. Delta 13C3-C2



Delta 13 IC4/ Delta NC4

