

Project: Garfield County, CO
 Site: BJU M33 496 Pad
 Well: BJU M33 FED 25D-32 496
 Wellbore: Wellbore #1
 Design: Design #5
 Latitude: 39.653302
 Longitude: -108.177837
 Ground Level: 8401.0
 RKB @ 8431.0usft (H&P #329)

FORMATION TOP DETAILS

TVDPATH	MDPATH	FORMATION
2428.0	2523.8	Wasatch
5428.0	5703.5	Wasatch G
5684.0	5974.8	Fort Union
7530.0	7905.7	Ohio Creek
7762.0	8137.8	TOG
7762.0	8137.8	Williams Fork
10356.0	10732.6	Cameo
11024.0	11400.8	Rollins

REFERENCE INFORMATION

Co-ordinate (N/E) Reference: Well BJU M33 FED 25D-32 496 - Slot 25D-32, True North
 Vertical (TVD) Reference: RKB @ 8431.0usft (H&P #329)
 Section (VS) Reference: Slot - 25D-32(0.0N, 0.0E)
 Measured Depth Reference: RKB @ 8431.0usft (H&P #329)
 Calculation Method: Minimum Curvature

WELL DETAILS: BJU M33 FED 25D-32 496

+N/-S	+E/-W	Northing	Easting	Latitude	Longitude
0.0	0.0	14412294.40	2434829.50	39.653302	-108.177837

PROJECT DETAILS: Garfield County, CO

Geodetic System: Universal Transverse Mercator (US Survey Feet)
 Datum: NAD 1927 - Western US
 Ellipsoid: Clarke 1866
 Zone: Zone 12N (114 W to 108 W)
 System Datum: Mean Sea Level

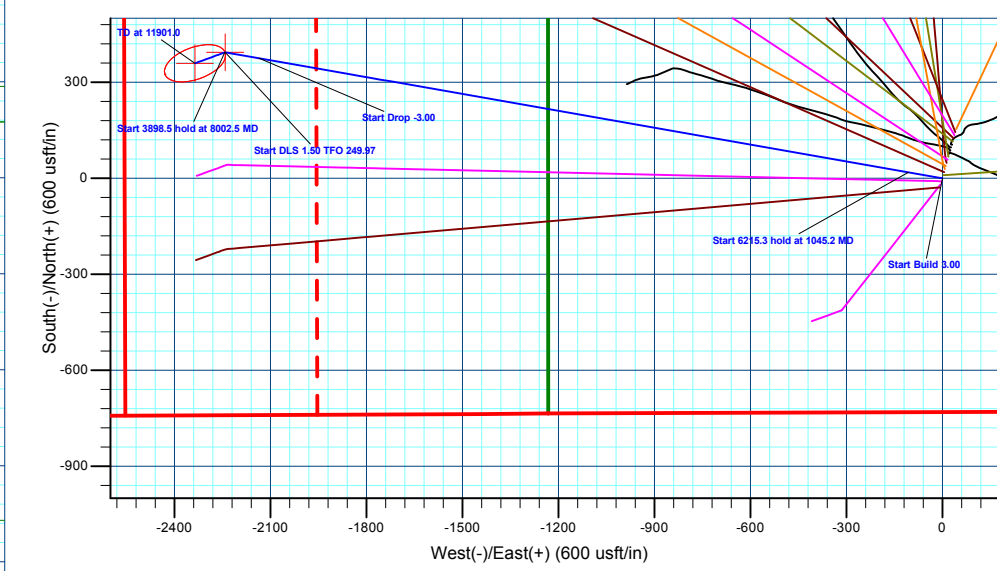
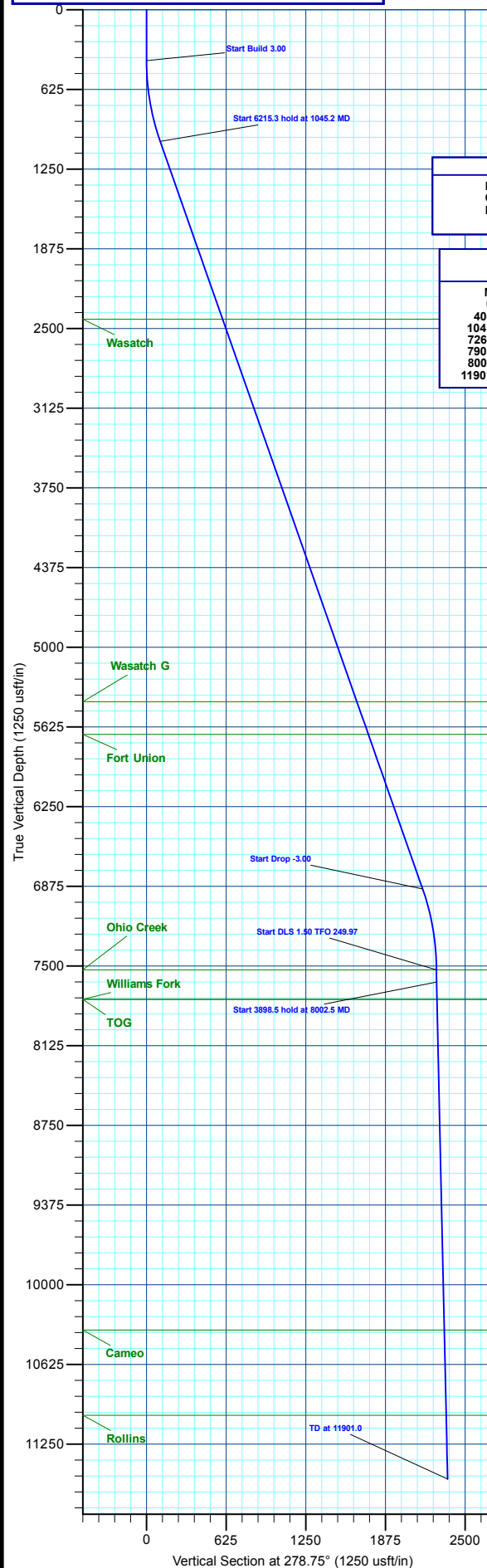
DESIGN TARGET DETAILS

Name	TVD	+N/-S	+E/-W	Northing	Easting	Latitude	Longitude
OHCR - 25D-32	7530.0	393.6	-2241.6	14412617.28	2432576.63	39.654382	-108.185796
PBHL - 25D-32	11524.0	359.3	-2335.6	14412580.10	2432483.80	39.654288	-108.186129

SECTION DETAILS

MD	Inc	Azi	TVD	+N/-S	+E/-W	Dleg	TFace	VSEct	Annotation
0.0	0.00	0.00	0.0	0.0	0.0	0.00	0.00	0.0	
400.0	0.00	0.00	400.0	0.0	0.0	0.00	0.00	0.0	Start Build 3.00
1045.2	19.36	279.96	1033.0	18.7	-106.3	3.00	279.96	107.9	Start 6215.3 hold at 1045.2 MD
7260.5	19.36	279.96	6897.0	374.9	-2135.3	0.00	0.00	0.0	Start Drop -3.00
7905.7	0.00	0.00	7530.0	393.6	-2241.6	3.00	180.00	2275.4	Start DLS 1.50 TFO 249.97
8002.5	1.45	249.97	7626.8	393.1	-2242.8	1.50	249.97	2276.5	Start 3898.5 hold at 8002.5 MD
11901.0	1.45	249.97	11524.0	359.3	-2335.6	0.00	0.00	2363.0	TD at 11901.0

T M
 Azimuths to True North
 Magnetic North: 9.48°
 Magnetic Field
 Strength: 51259.3nT
 Dip Angle: 65.82°
 Date: 12/11/2019
 Model: HDGM_FILE



Plan: Design #5 (BJU M33 FED 25D-32 496/Wellbore #1)

Created By: Will Jircik Date: 13:48, January 10 2023



Caerus Oil & Gas

Garfield County, CO

BJU M33 496 Pad

BJU M33 FED 25D-32 496 - Slot 25D-32

Wellbore #1

Plan: Design #5

KLX Well Planning Report

10 January, 2023



Database:	EDM 5000.1 Single User Db	Local Co-ordinate Reference:	Well BJU M33 FED 25D-32 496 - Slot 25D-32
Company:	Caerus Oil & Gas	TVD Reference:	RKB @ 8431.0usft (H&P #329)
Project:	Garfield County, CO	MD Reference:	RKB @ 8431.0usft (H&P #329)
Site:	BJU M33 496 Pad	North Reference:	True
Well:	BJU M33 FED 25D-32 496	Survey Calculation Method:	Minimum Curvature
Wellbore:	Wellbore #1		
Design:	Design #5		

Project	Garfield County, CO		
Map System:	Universal Transverse Mercator (US Survey Fee	System Datum:	Mean Sea Level
Geo Datum:	NAD 1927 - Western US		
Map Zone:	Zone 12N (114 W to 108 W)		

Site	BJU M33 496 Pad				
Site Position:		Northing:	14,415,354.00 usft	Latitude:	39.660635
From:	Map	Easting:	2,447,010.80 usft	Longitude:	-108.134267
Position Uncertainty:	0.0 usft	Slot Radius:	13-3/16 "	Grid Convergence:	1.83 °

Well	BJU M33 FED 25D-32 496 - Slot 25D-32					
Well Position	+N/-S	-2,669.0 usft	Northing:	14,412,294.40 usft	Latitude:	39.653302
	+E/-W	-12,272.8 usft	Easting:	2,434,829.50 usft	Longitude:	-108.177838
Position Uncertainty		0.0 usft	Wellhead Elevation:		Ground Level:	8,401.0 usft

Wellbore	Wellbore #1				
Magnetics	Model Name	Sample Date	Declination (°)	Dip Angle (°)	Field Strength (nT)
	HDGM_FILE	12/11/2019	9.48	65.82	51,259.30000000

Design	Design #5			
Audit Notes:				
Version:	Phase:	PLAN	Tie On Depth:	0.0
Vertical Section:	Depth From (TVD) (usft)	+N/-S (usft)	+E/-W (usft)	Direction (°)
	0.0	0.0	0.0	278.75

Plan Sections										
Measured Depth (usft)	Inclination (°)	Azimuth (°)	Vertical Depth (usft)	+N/-S (usft)	+E/-W (usft)	Dogleg Rate (°/100usft)	Build Rate (°/100usft)	Turn Rate (°/100usft)	TFO (°)	Target
0.0	0.00	0.00	0.0	0.0	0.0	0.00	0.00	0.00	0.00	
400.0	0.00	0.00	400.0	0.0	0.0	0.00	0.00	0.00	0.00	
1,045.2	19.36	279.96	1,033.0	18.7	-106.3	3.00	3.00	0.00	279.96	
7,260.5	19.36	279.96	6,897.0	374.9	-2,135.3	0.00	0.00	0.00	0.00	
7,905.7	0.00	0.00	7,530.0	393.6	-2,241.6	3.00	-3.00	0.00	180.00	OHCR - 25D-32
8,002.5	1.45	249.97	7,626.8	393.1	-2,242.8	1.50	1.50	-113.68	249.97	
11,901.0	1.45	249.97	11,524.0	359.3	-2,335.6	0.00	0.00	0.00	0.00	PBHL - 25D-32

Database:	EDM 5000.1 Single User Db	Local Co-ordinate Reference:	Well BJU M33 FED 25D-32 496 - Slot 25D-32
Company:	Caerus Oil & Gas	TVD Reference:	RKB @ 8431.0usft (H&P #329)
Project:	Garfield County, CO	MD Reference:	RKB @ 8431.0usft (H&P #329)
Site:	BJU M33 496 Pad	North Reference:	True
Well:	BJU M33 FED 25D-32 496	Survey Calculation Method:	Minimum Curvature
Wellbore:	Wellbore #1		
Design:	Design #5		

Planned Survey									
Measured Depth (usft)	Inclination (°)	Azimuth (°)	Vertical Depth (usft)	+N/-S (usft)	+E/-W (usft)	Vertical Section (usft)	Dogleg Rate (°/100usft)	Build Rate (°/100usft)	Turn Rate (°/100usft)
0.0	0.00	0.00	0.0	0.0	0.0	0.0	0.00	0.00	0.00
100.0	0.00	0.00	100.0	0.0	0.0	0.0	0.00	0.00	0.00
200.0	0.00	0.00	200.0	0.0	0.0	0.0	0.00	0.00	0.00
300.0	0.00	0.00	300.0	0.0	0.0	0.0	0.00	0.00	0.00
Start Build 3.00									
400.0	0.00	0.00	400.0	0.0	0.0	0.0	0.00	0.00	0.00
500.0	3.00	279.96	500.0	0.5	-2.6	2.6	3.00	3.00	0.00
600.0	6.00	279.96	599.6	1.8	-10.3	10.5	3.00	3.00	0.00
700.0	9.00	279.96	698.8	4.1	-23.2	23.5	3.00	3.00	0.00
800.0	12.00	279.96	797.1	7.2	-41.1	41.7	3.00	3.00	0.00
900.0	15.00	279.96	894.3	11.3	-64.1	65.1	3.00	3.00	0.00
1,000.0	18.00	279.96	990.2	16.2	-92.1	93.5	3.00	3.00	0.00
Start 6215.3 hold at 1045.2 MD									
1,045.2	19.36	279.96	1,033.0	18.7	-106.3	107.9	3.00	3.00	0.00
1,100.0	19.36	279.96	1,084.7	21.8	-124.2	126.1	0.00	0.00	0.00
1,200.0	19.36	279.96	1,179.0	27.5	-156.9	159.2	0.00	0.00	0.00
1,300.0	19.36	279.96	1,273.4	33.3	-189.5	192.4	0.00	0.00	0.00
1,400.0	19.36	279.96	1,367.7	39.0	-222.1	225.5	0.00	0.00	0.00
1,500.0	19.36	279.96	1,462.1	44.7	-254.8	258.6	0.00	0.00	0.00
1,600.0	19.36	279.96	1,556.4	50.5	-287.4	291.8	0.00	0.00	0.00
1,700.0	19.36	279.96	1,650.8	56.2	-320.1	324.9	0.00	0.00	0.00
1,800.0	19.36	279.96	1,745.1	61.9	-352.7	358.0	0.00	0.00	0.00
1,900.0	19.36	279.96	1,839.5	67.7	-385.4	391.2	0.00	0.00	0.00
2,000.0	19.36	279.96	1,933.8	73.4	-418.0	424.3	0.00	0.00	0.00
2,100.0	19.36	279.96	2,028.2	79.1	-450.7	457.4	0.00	0.00	0.00
2,200.0	19.36	279.96	2,122.5	84.9	-483.3	490.6	0.00	0.00	0.00
2,300.0	19.36	279.96	2,216.9	90.6	-515.9	523.7	0.00	0.00	0.00
2,400.0	19.36	279.96	2,311.2	96.3	-548.6	556.9	0.00	0.00	0.00
2,500.0	19.36	279.96	2,405.6	102.0	-581.2	590.0	0.00	0.00	0.00
Wasatch									
2,523.8	19.36	279.96	2,428.0	103.4	-589.0	597.9	0.00	0.00	0.00
2,600.0	19.36	279.96	2,499.9	107.8	-613.9	623.1	0.00	0.00	0.00
2,700.0	19.36	279.96	2,594.3	113.5	-646.5	656.3	0.00	0.00	0.00
2,800.0	19.36	279.96	2,688.6	119.2	-679.2	689.4	0.00	0.00	0.00
2,900.0	19.36	279.96	2,783.0	125.0	-711.8	722.5	0.00	0.00	0.00
3,000.0	19.36	279.96	2,877.3	130.7	-744.5	755.7	0.00	0.00	0.00
3,100.0	19.36	279.96	2,971.7	136.4	-777.1	788.8	0.00	0.00	0.00
3,200.0	19.36	279.96	3,066.0	142.2	-809.7	821.9	0.00	0.00	0.00
3,300.0	19.36	279.96	3,160.3	147.9	-842.4	855.1	0.00	0.00	0.00
3,400.0	19.36	279.96	3,254.7	153.6	-875.0	888.2	0.00	0.00	0.00
3,500.0	19.36	279.96	3,349.0	159.4	-907.7	921.4	0.00	0.00	0.00
3,600.0	19.36	279.96	3,443.4	165.1	-940.3	954.5	0.00	0.00	0.00
3,700.0	19.36	279.96	3,537.7	170.8	-973.0	987.6	0.00	0.00	0.00
3,800.0	19.36	279.96	3,632.1	176.6	-1,005.6	1,020.8	0.00	0.00	0.00
3,900.0	19.36	279.96	3,726.4	182.3	-1,038.3	1,053.9	0.00	0.00	0.00
4,000.0	19.36	279.96	3,820.8	188.0	-1,070.9	1,087.0	0.00	0.00	0.00
4,100.0	19.36	279.96	3,915.1	193.8	-1,103.5	1,120.2	0.00	0.00	0.00
4,200.0	19.36	279.96	4,009.5	199.5	-1,136.2	1,153.3	0.00	0.00	0.00
4,300.0	19.36	279.96	4,103.8	205.2	-1,168.8	1,186.4	0.00	0.00	0.00
4,400.0	19.36	279.96	4,198.2	210.9	-1,201.5	1,219.6	0.00	0.00	0.00
4,500.0	19.36	279.96	4,292.5	216.7	-1,234.1	1,252.7	0.00	0.00	0.00
4,600.0	19.36	279.96	4,386.9	222.4	-1,266.8	1,285.9	0.00	0.00	0.00
4,700.0	19.36	279.96	4,481.2	228.1	-1,299.4	1,319.0	0.00	0.00	0.00

Database:	EDM 5000.1 Single User Db	Local Co-ordinate Reference:	Well BJU M33 FED 25D-32 496 - Slot 25D-32
Company:	Caerus Oil & Gas	TVD Reference:	RKB @ 8431.0usft (H&P #329)
Project:	Garfield County, CO	MD Reference:	RKB @ 8431.0usft (H&P #329)
Site:	BJU M33 496 Pad	North Reference:	True
Well:	BJU M33 FED 25D-32 496	Survey Calculation Method:	Minimum Curvature
Wellbore:	Wellbore #1		
Design:	Design #5		

Planned Survey										
Measured Depth (usft)	Inclination (°)	Azimuth (°)	Vertical Depth (usft)	+N/-S (usft)	+E/-W (usft)	Vertical Section (usft)	Dogleg Rate (°/100usft)	Build Rate (°/100usft)	Turn Rate (°/100usft)	
4,800.0	19.36	279.96	4,575.6	233.9	-1,332.1	1,352.1	0.00	0.00	0.00	
4,900.0	19.36	279.96	4,669.9	239.6	-1,364.7	1,385.3	0.00	0.00	0.00	
5,000.0	19.36	279.96	4,764.3	245.3	-1,397.3	1,418.4	0.00	0.00	0.00	
5,100.0	19.36	279.96	4,858.6	251.1	-1,430.0	1,451.5	0.00	0.00	0.00	
5,200.0	19.36	279.96	4,953.0	256.8	-1,462.6	1,484.7	0.00	0.00	0.00	
5,300.0	19.36	279.96	5,047.3	262.5	-1,495.3	1,517.8	0.00	0.00	0.00	
5,400.0	19.36	279.96	5,141.7	268.3	-1,527.9	1,550.9	0.00	0.00	0.00	
5,500.0	19.36	279.96	5,236.0	274.0	-1,560.6	1,584.1	0.00	0.00	0.00	
5,600.0	19.36	279.96	5,330.3	279.7	-1,593.2	1,617.2	0.00	0.00	0.00	
5,700.0	19.36	279.96	5,424.7	285.5	-1,625.9	1,650.4	0.00	0.00	0.00	
Wasatch G										
5,703.5	19.36	279.96	5,428.0	285.7	-1,627.0	1,651.5	0.00	0.00	0.00	
5,800.0	19.36	279.96	5,519.0	291.2	-1,658.5	1,683.5	0.00	0.00	0.00	
5,900.0	19.36	279.96	5,613.4	296.9	-1,691.1	1,716.6	0.00	0.00	0.00	
Fort Union										
5,974.8	19.36	279.96	5,684.0	301.2	-1,715.6	1,741.4	0.00	0.00	0.00	
6,000.0	19.36	279.96	5,707.7	302.6	-1,723.8	1,749.8	0.00	0.00	0.00	
6,100.0	19.36	279.96	5,802.1	308.4	-1,756.4	1,782.9	0.00	0.00	0.00	
6,200.0	19.36	279.96	5,896.4	314.1	-1,789.1	1,816.0	0.00	0.00	0.00	
6,300.0	19.36	279.96	5,990.8	319.8	-1,821.7	1,849.2	0.00	0.00	0.00	
6,400.0	19.36	279.96	6,085.1	325.6	-1,854.4	1,882.3	0.00	0.00	0.00	
6,500.0	19.36	279.96	6,179.5	331.3	-1,887.0	1,915.4	0.00	0.00	0.00	
6,600.0	19.36	279.96	6,273.8	337.0	-1,919.7	1,948.6	0.00	0.00	0.00	
6,700.0	19.36	279.96	6,368.2	342.8	-1,952.3	1,981.7	0.00	0.00	0.00	
6,800.0	19.36	279.96	6,462.5	348.5	-1,984.9	2,014.9	0.00	0.00	0.00	
6,900.0	19.36	279.96	6,556.9	354.2	-2,017.6	2,048.0	0.00	0.00	0.00	
7,000.0	19.36	279.96	6,651.2	360.0	-2,050.2	2,081.1	0.00	0.00	0.00	
7,100.0	19.36	279.96	6,745.6	365.7	-2,082.9	2,114.3	0.00	0.00	0.00	
7,200.0	19.36	279.96	6,839.9	371.4	-2,115.5	2,147.4	0.00	0.00	0.00	
Start Drop -3.00										
7,260.5	19.36	279.96	6,897.0	374.9	-2,135.3	2,167.5	0.00	0.00	0.00	
7,300.0	18.17	279.96	6,934.4	377.1	-2,147.8	2,180.2	3.00	-3.00	0.00	
7,400.0	15.17	279.96	7,030.2	382.0	-2,176.0	2,208.8	3.00	-3.00	0.00	
7,500.0	12.17	279.96	7,127.3	386.1	-2,199.3	2,232.5	3.00	-3.00	0.00	
7,600.0	9.17	279.96	7,225.6	389.3	-2,217.6	2,251.0	3.00	-3.00	0.00	
7,700.0	6.17	279.96	7,324.7	391.6	-2,230.7	2,264.3	3.00	-3.00	0.00	
7,800.0	3.17	279.96	7,424.3	393.1	-2,238.7	2,272.5	3.00	-3.00	0.00	
Start DLS 1.50 TFO 249.97 - Ohio Creek										
7,905.7	0.00	0.00	7,530.0	393.6	-2,241.6	2,275.4	3.00	-3.00	0.00	
Start 3898.5 hold at 8002.5 MD										
8,002.5	1.45	249.97	7,626.8	393.1	-2,242.8	2,276.5	1.50	1.50	0.00	
8,100.0	1.45	249.97	7,724.2	392.3	-2,245.1	2,278.6	0.00	0.00	0.00	
Williams Fork - TOG										
8,137.8	1.45	249.97	7,762.0	392.0	-2,246.0	2,279.5	0.00	0.00	0.00	
8,200.0	1.45	249.97	7,824.2	391.4	-2,247.5	2,280.8	0.00	0.00	0.00	
8,300.0	1.45	249.97	7,924.2	390.6	-2,249.8	2,283.1	0.00	0.00	0.00	
8,400.0	1.45	249.97	8,024.1	389.7	-2,252.2	2,285.3	0.00	0.00	0.00	
8,500.0	1.45	249.97	8,124.1	388.8	-2,254.6	2,287.5	0.00	0.00	0.00	
8,600.0	1.45	249.97	8,224.1	388.0	-2,257.0	2,289.7	0.00	0.00	0.00	
8,700.0	1.45	249.97	8,324.1	387.1	-2,259.4	2,291.9	0.00	0.00	0.00	
8,800.0	1.45	249.97	8,424.0	386.2	-2,261.7	2,294.2	0.00	0.00	0.00	
8,900.0	1.45	249.97	8,524.0	385.4	-2,264.1	2,296.4	0.00	0.00	0.00	
9,000.0	1.45	249.97	8,624.0	384.5	-2,266.5	2,298.6	0.00	0.00	0.00	

Database:	EDM 5000.1 Single User Db	Local Co-ordinate Reference:	Well BJU M33 FED 25D-32 496 - Slot 25D-32
Company:	Caerus Oil & Gas	TVD Reference:	RKB @ 8431.0usft (H&P #329)
Project:	Garfield County, CO	MD Reference:	RKB @ 8431.0usft (H&P #329)
Site:	BJU M33 496 Pad	North Reference:	True
Well:	BJU M33 FED 25D-32 496	Survey Calculation Method:	Minimum Curvature
Wellbore:	Wellbore #1		
Design:	Design #5		

Planned Survey										
Measured Depth (usft)	Inclination (°)	Azimuth (°)	Vertical Depth (usft)	+N/-S (usft)	+E/-W (usft)	Vertical Section (usft)	Dogleg Rate (°/100usft)	Build Rate (°/100usft)	Turn Rate (°/100usft)	
9,100.0	1.45	249.97	8,723.9	383.6	-2,268.9	2,300.8	0.00	0.00	0.00	
9,200.0	1.45	249.97	8,823.9	382.8	-2,271.3	2,303.1	0.00	0.00	0.00	
9,300.0	1.45	249.97	8,923.9	381.9	-2,273.6	2,305.3	0.00	0.00	0.00	
9,400.0	1.45	249.97	9,023.8	381.0	-2,276.0	2,307.5	0.00	0.00	0.00	
9,500.0	1.45	249.97	9,123.8	380.1	-2,278.4	2,309.7	0.00	0.00	0.00	
9,600.0	1.45	249.97	9,223.8	379.3	-2,280.8	2,311.9	0.00	0.00	0.00	
9,700.0	1.45	249.97	9,323.7	378.4	-2,283.2	2,314.2	0.00	0.00	0.00	
9,800.0	1.45	249.97	9,423.7	377.5	-2,285.5	2,316.4	0.00	0.00	0.00	
9,900.0	1.45	249.97	9,523.7	376.7	-2,287.9	2,318.6	0.00	0.00	0.00	
10,000.0	1.45	249.97	9,623.6	375.8	-2,290.3	2,320.8	0.00	0.00	0.00	
10,100.0	1.45	249.97	9,723.6	374.9	-2,292.7	2,323.0	0.00	0.00	0.00	
10,200.0	1.45	249.97	9,823.6	374.1	-2,295.1	2,325.3	0.00	0.00	0.00	
10,300.0	1.45	249.97	9,923.5	373.2	-2,297.4	2,327.5	0.00	0.00	0.00	
10,400.0	1.45	249.97	10,023.5	372.3	-2,299.8	2,329.7	0.00	0.00	0.00	
10,500.0	1.45	249.97	10,123.5	371.5	-2,302.2	2,331.9	0.00	0.00	0.00	
10,600.0	1.45	249.97	10,223.4	370.6	-2,304.6	2,334.1	0.00	0.00	0.00	
10,700.0	1.45	249.97	10,323.4	369.7	-2,307.0	2,336.4	0.00	0.00	0.00	
Cameo										
10,732.6	1.45	249.97	10,356.0	369.5	-2,307.7	2,337.1	0.00	0.00	0.00	
10,800.0	1.45	249.97	10,423.4	368.9	-2,309.3	2,338.6	0.00	0.00	0.00	
10,900.0	1.45	249.97	10,523.3	368.0	-2,311.7	2,340.8	0.00	0.00	0.00	
11,000.0	1.45	249.97	10,623.3	367.1	-2,314.1	2,343.0	0.00	0.00	0.00	
11,100.0	1.45	249.97	10,723.3	366.3	-2,316.5	2,345.2	0.00	0.00	0.00	
11,200.0	1.45	249.97	10,823.3	365.4	-2,318.9	2,347.5	0.00	0.00	0.00	
11,300.0	1.45	249.97	10,923.2	364.5	-2,321.3	2,349.7	0.00	0.00	0.00	
11,400.0	1.45	249.97	11,023.2	363.7	-2,323.6	2,351.9	0.00	0.00	0.00	
Rollins										
11,400.8	1.45	249.97	11,024.0	363.7	-2,323.7	2,351.9	0.00	0.00	0.00	
11,500.0	1.45	249.97	11,123.2	362.8	-2,326.0	2,354.1	0.00	0.00	0.00	
11,600.0	1.45	249.97	11,223.1	361.9	-2,328.4	2,356.4	0.00	0.00	0.00	
11,700.0	1.45	249.97	11,323.1	361.1	-2,330.8	2,358.6	0.00	0.00	0.00	
11,800.0	1.45	249.97	11,423.1	360.2	-2,333.2	2,360.8	0.00	0.00	0.00	
TD at 11901.0										
11,901.0	1.45	249.97	11,524.0	359.3	-2,335.6	2,363.0	0.00	0.00	0.00	

Design Targets										
Target Name	Dip Angle (°)	Dip Dir. (°)	TVD (usft)	+N/-S (usft)	+E/-W (usft)	Northing (usft)	Easting (usft)	Latitude	Longitude	
OHCR - 25D-32	0.00	0.00	7,530.0	393.6	-2,241.6	14,412,617.28	2,432,576.63	39.654382	-108.185796	
- plan hits target center										
- Point										
PBHL - 25D-32	0.00	0.00	11,524.0	359.3	-2,335.6	14,412,580.10	2,432,483.80	39.654288	-108.186130	
- plan hits target center										
- Ellipse (radii L100.0 W50.0 on 250.00 azi)										

Database:	EDM 5000.1 Single User Db	Local Co-ordinate Reference:	Well BJU M33 FED 25D-32 496 - Slot 25D-32
Company:	Caerus Oil & Gas	TVD Reference:	RKB @ 8431.0usft (H&P #329)
Project:	Garfield County, CO	MD Reference:	RKB @ 8431.0usft (H&P #329)
Site:	BJU M33 496 Pad	North Reference:	True
Well:	BJU M33 FED 25D-32 496	Survey Calculation Method:	Minimum Curvature
Wellbore:	Wellbore #1		
Design:	Design #5		

Formations						
Measured Depth (usft)	Vertical Depth (usft)	Name	Lithology	Dip (°)	Dip Direction (°)	
2,523.8	2,428.0	Wasatch				
5,703.5	5,428.0	Wasatch G				
5,974.8	5,684.0	Fort Union				
7,905.7	7,530.0	Ohio Creek				
8,137.8	7,762.0	Williams Fork				
8,137.8	7,762.0	TOG				
10,732.6	10,356.0	Cameo				
11,400.8	11,024.0	Rollins				

Plan Annotations					
Measured Depth (usft)	Vertical Depth (usft)	Local Coordinates		Comment	
		+N/-S (usft)	+E/-W (usft)		
400.0	400.0	0.0	0.0	Start Build 3.00	
1,045.2	1,033.0	18.7	-106.3	Start 6215.3 hold at 1045.2 MD	
7,260.5	6,897.0	374.9	-2,135.3	Start Drop -3.00	
7,905.7	7,530.0	393.6	-2,241.6	Start DLS 1.50 TFO 249.97	
8,002.5	7,626.8	393.1	-2,242.8	Start 3898.5 hold at 8002.5 MD	
11,901.0	11,524.0	359.3	-2,335.6	TD at 11901.0	