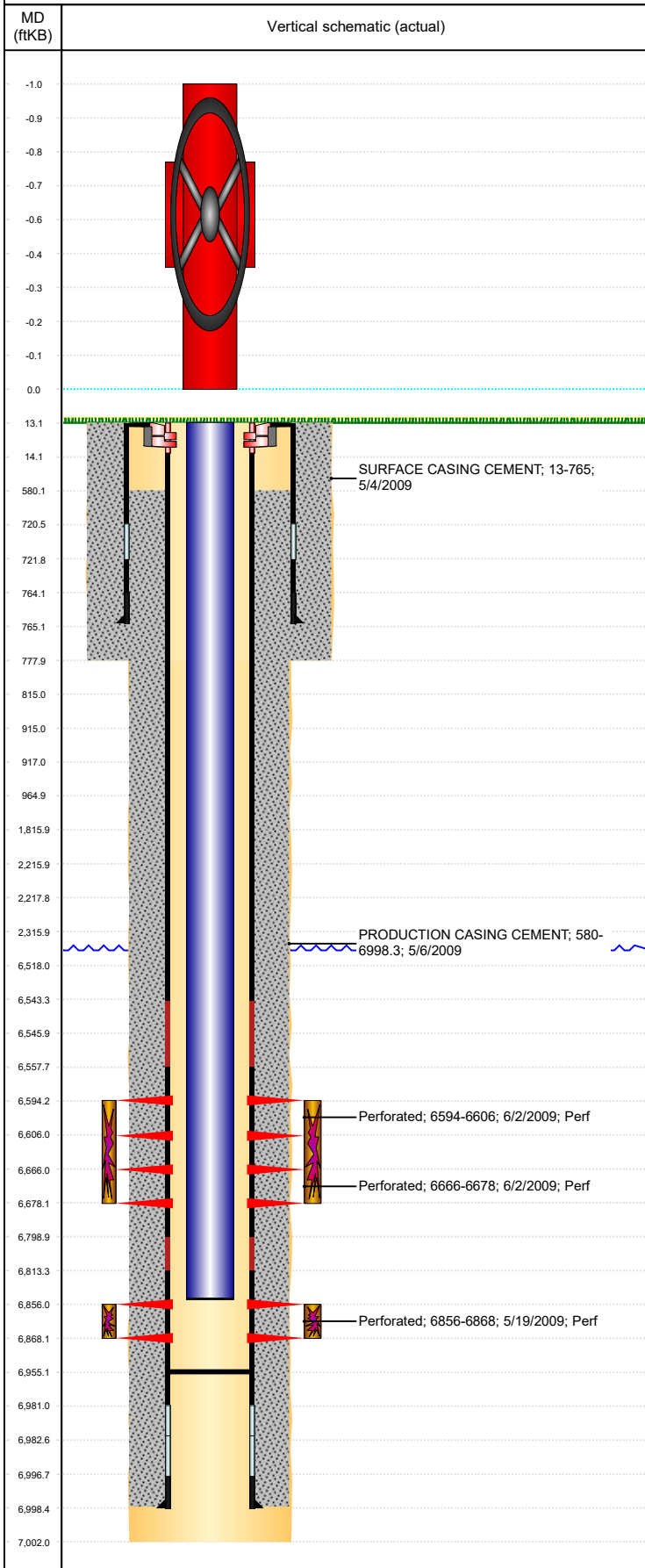




# P&A Wellbore For State

Well Name: HERBST C27-30

Land, Original Hole, 3/2/2023 9:27:42 AM



Well Header									
Surface UWI 0512330280			Business Unit Rockies			Gov Auth Dist		Prod Tree Loc Land	
Orig. KB to Gnd (ft) 13.00		Original Spud Date 5/3/2009		Abandon Date		Well Sub-Status PR			High... N
Comment 318Ae LOCATION									
Surface Location (Congressional)									
Qtr 3 NW	Qtr 4 NW	Section 27	Twnshp 4	Twنش... N	Range 64	Rng E/... W	Latitude (°) 40.29017593 7	Longitude (°) -104.545754804	
Wellbore Sections									
Section Des			Hole Size (in)			Act Top (ftKB)		Act Btm (ftKB)	
SURFACE			12 1/4			13.0		778.0	
PRODUCTION			7 7/8			778.0		7,002.0	
Casing Strings									
Csg Des			Run Date		OD (in)	Wt/Len (lb/ft)	Grade	Top Depth (MD) (ftKB)	Set Depth (MD) (ftKB)
Surface			5/4/2009		8 5/8	24.00	J-55	13	765
Production Casing			5/6/2009		4 1/2	11.60	M-80	13	6998.3
Cement									
Des					Start Date		Top (ftKB)		Btm (ftKB)
SURFACE CASING CEMENT					5/4/2009		13.0		765.0
PRODUCTION CASING CEMENT					5/6/2009		580.0		6,998.3
Zone Statuses									
Zone Name		Status Date	Status	Fluid Type	Job			Prod Method	
NIOBRARA		6/3/2009	PR	Water	DRILLING/COMPLETION - ORIGINAL, 5/2/2009...			Flowing	
NIOBRARA		2/8/2010	PR						
CODELL		5/9/2017	SI						
CODELL		10/17/2018	PR						
Perforation Data									
Linked Zone			Explosive Type	Entered Shot Total	Top (ftKB)		Btm (ftKB)		Date
NIOBRARA, Original Hole			A	24	6,594.0		6,606.0		6/2/2009
NIOBRARA, Original Hole			B	24	6,666.0		6,678.0		6/2/2009
CODELL, Original Hole				48	6,856.0		6,868.0		5/19/2009
Stimulation Intervals									
Zone				Start Date		Top (ftKB)		Btm (ftKB)	
NIOBRARA, Original Hole				6/2/2009		6,594.0		6,678.0	
CODELL, Original Hole				6/2/2009		6,856.0		6,868.0	
Other In Hole									
Run Date		Des			Make		OD (in)	Top (ftKB)	Btm (ftKB)
Logs									
Date		Type					Depth Top (MD) (ftKB)		Btm (ftKB)
5/6/2009		Caliper/Comp. Density/Neutron/GR/SP/ML					2,600		7,005.0
5/6/2009		DIL/GR/SP/Caliper					765		7,005.0
6/2/2022							0		6,800.0
Plug Back Total Depths									
Date		Type			Com				PBTD (ftKB)
5/6/2009		FLOAT COLLAR							6,981
12/19/2009		PLUG REMNANTS			87' OF RAT HOLE				6,955