



RADIAL BOND TOOL
GAMMA RAY
CCL

ENERGY SERVICES


Company		CHEVRON		Country USA	
Well		LOPRESTO-PMK #2-2			
Field		WATTENBERG			
County		WELD			
State		CO			
Location:		API # : 05-123-14064 NWNE LAT. 40.347330 LONG. -104.741500 SEC 2 TWP 4N RGE 66W		Other Services	
Permanent Datum		GL		Elevation 4664'	
Log Measured From		KB 13'			
Drilling Measured From		KB		Elevation K.B. 4677' D.F. 4676' G.L. 4664'	
Date		10-14-22			
Run Number		ONE			
Depth Driller		7360'			
Depth Logger		1860'			
Bottom Logged Interval		1864'			
Top Log Interval		SURFACE			
Open Hole Size		8.625"			
Type Fluid		WATER			
Density / Viscosity		NA			
Max. Recorded Temp.		97.41°F			
Estimated Cement Top		NA			
Time Well Ready		ON ARRIVAL			
Time Logger on Bottom		NA			
Equipment Number		3815			
Location		GREELEY, CO			
Recorded By		P.GULLICKSON			
Witnessed By		V. GUEVARA			
Run Number		Bit		From To	
Borehole Record		From To		Size Weight From To	
Casing Record		Size		Wgt/Ft Top Bottom	
Surface String		8.625"		24# SURFACE 314'	
Prot. String		4.5"		15.10# SURFACE 6995'	
Production String					
Liner					

<<< Fold Here >>>

All interpretations are opinions based on inferences from electrical or other measurements and we cannot and do not guarantee the accuracy or correctness of any interpretation, and we shall not, except in the case of gross or willful negligence on our part, be liable or responsible for any loss, costs, damages, or expenses incurred or sustained by anyone resulting from any interpretation made by any of our officers, agents or employees. These interpretations are also subject to our general terms and conditions set out in our current Price Schedule.

Comments

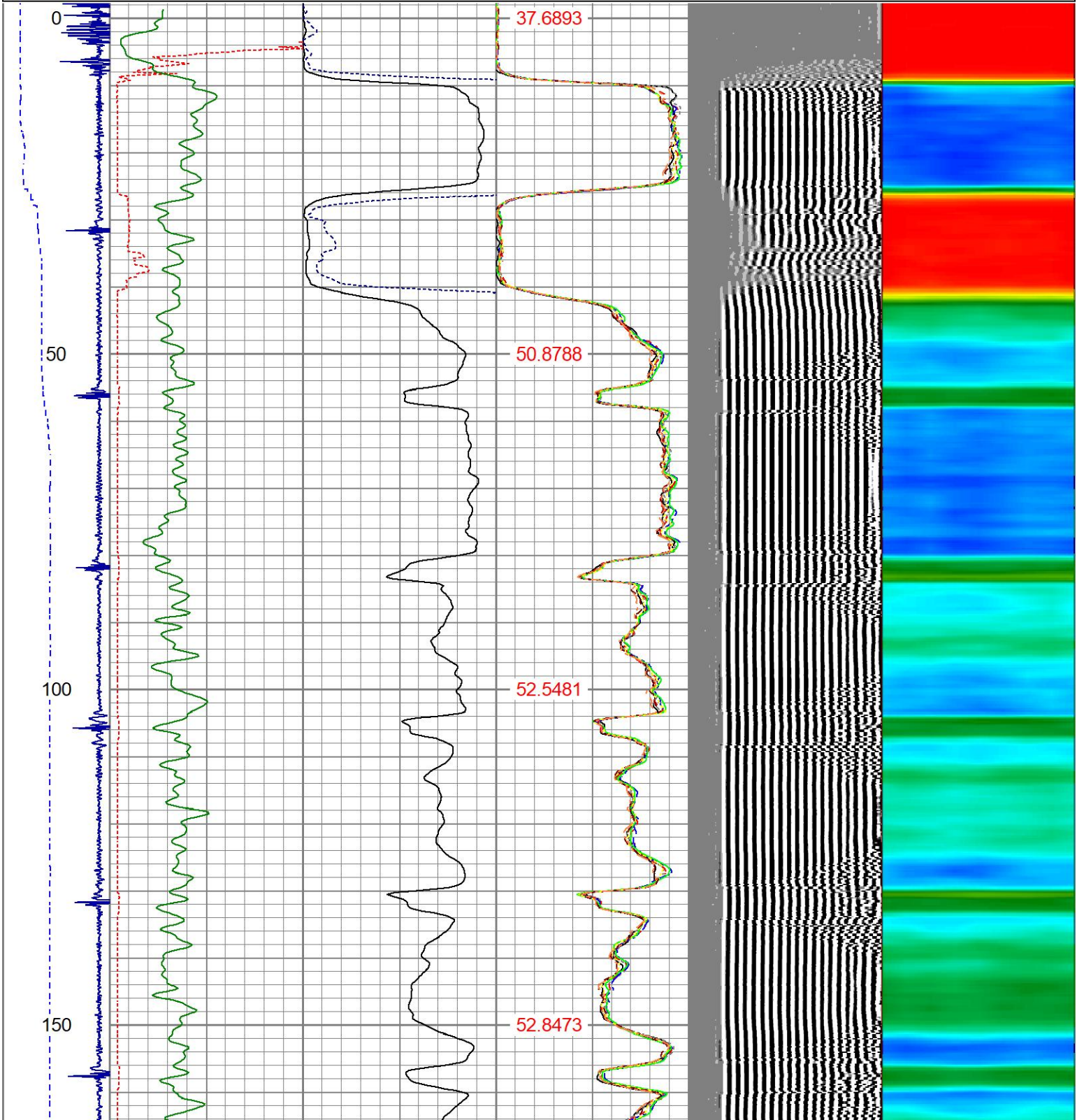
RAN CBL TO VERIFY CEMENT BOND
WELL LOADED UPON ARRIVAL,

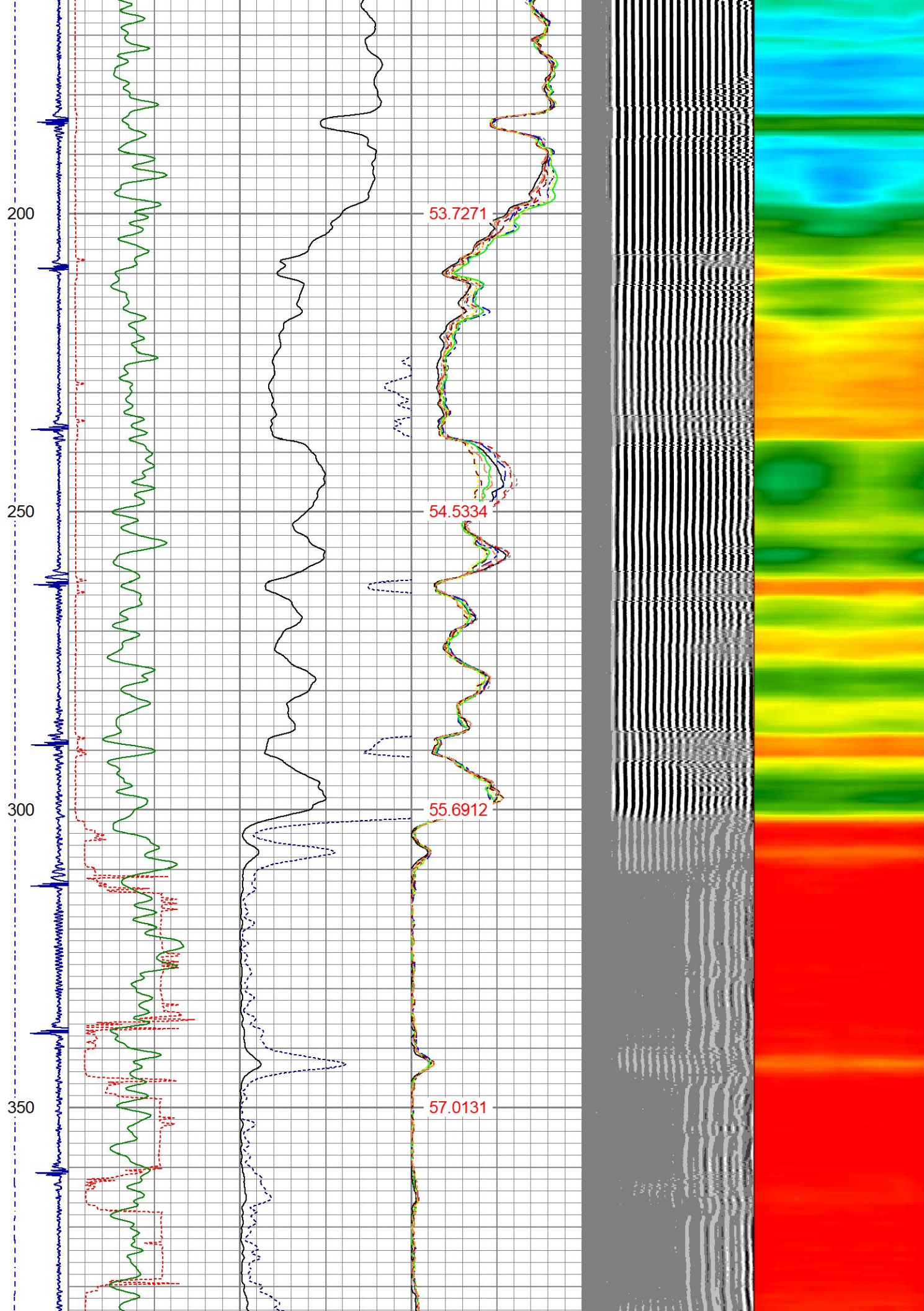
Sensor	Offset (ft)	Schematic	Description	Length (ft)	O.D. (in)	Weight (lb)
			CHD-1_11/16_Cablehead 1 11/16 Cablehead	1.00	1.68	5.00

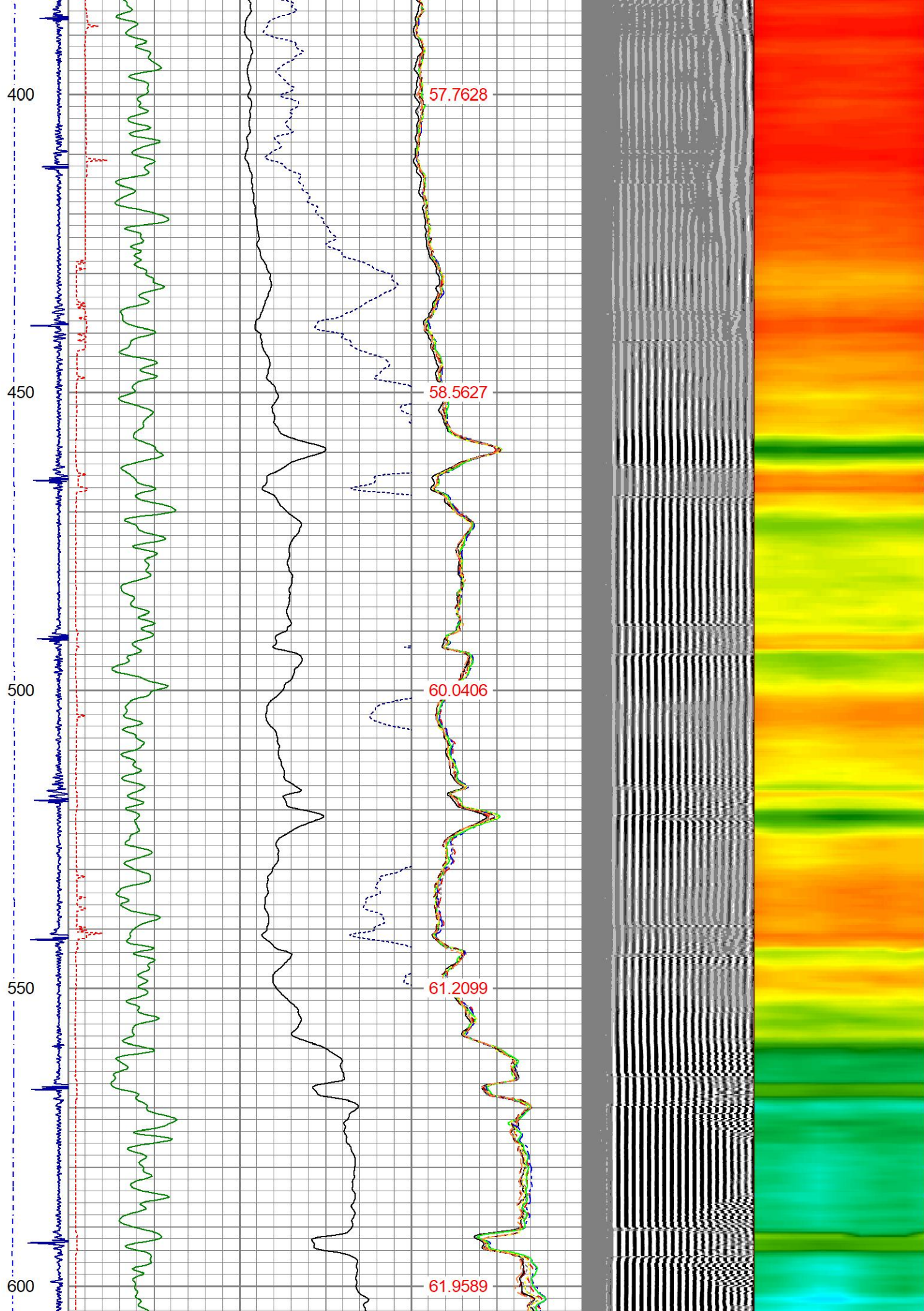
			CENT-1.69variable 1.69" Centrilizer Variable Length	3.00	1.69	15.00
HEADVOLT	16.88					
Temp	14.02					
WVFS8	11.79		RBT-27SBT10 (Greeley Ext Temp) Probe 2.75" Radial with Integral Temperature Sub	9.39	2.75	
WVFS7	11.79					
WVFS6	11.79					
WVFS5	11.79					
WVFS4	11.79					
WVFS3	11.79					
WVFS2	11.79					
WVFS1	11.79					
WVF3FT	11.79					
WVF5FT	10.79					
WVFCAL	7.54					
HEADVOLT	7.54					
			CENT-1.69variable 1.69" Centrilizer Variable Length	3.00	1.69	15.00
CCL	3.63					
			GR-27GRL10 (27GRL10-XXXX) 2-3/4" Probe Gamma Ray	4.54	2.75	50.00
GR	0.89					
Dataset: lopresto-pm k #2-2.db: field/well/run1/pass1.8 Total length: 20.93 ft Total weight: 85.00 lb O.D.: 2.75 in						

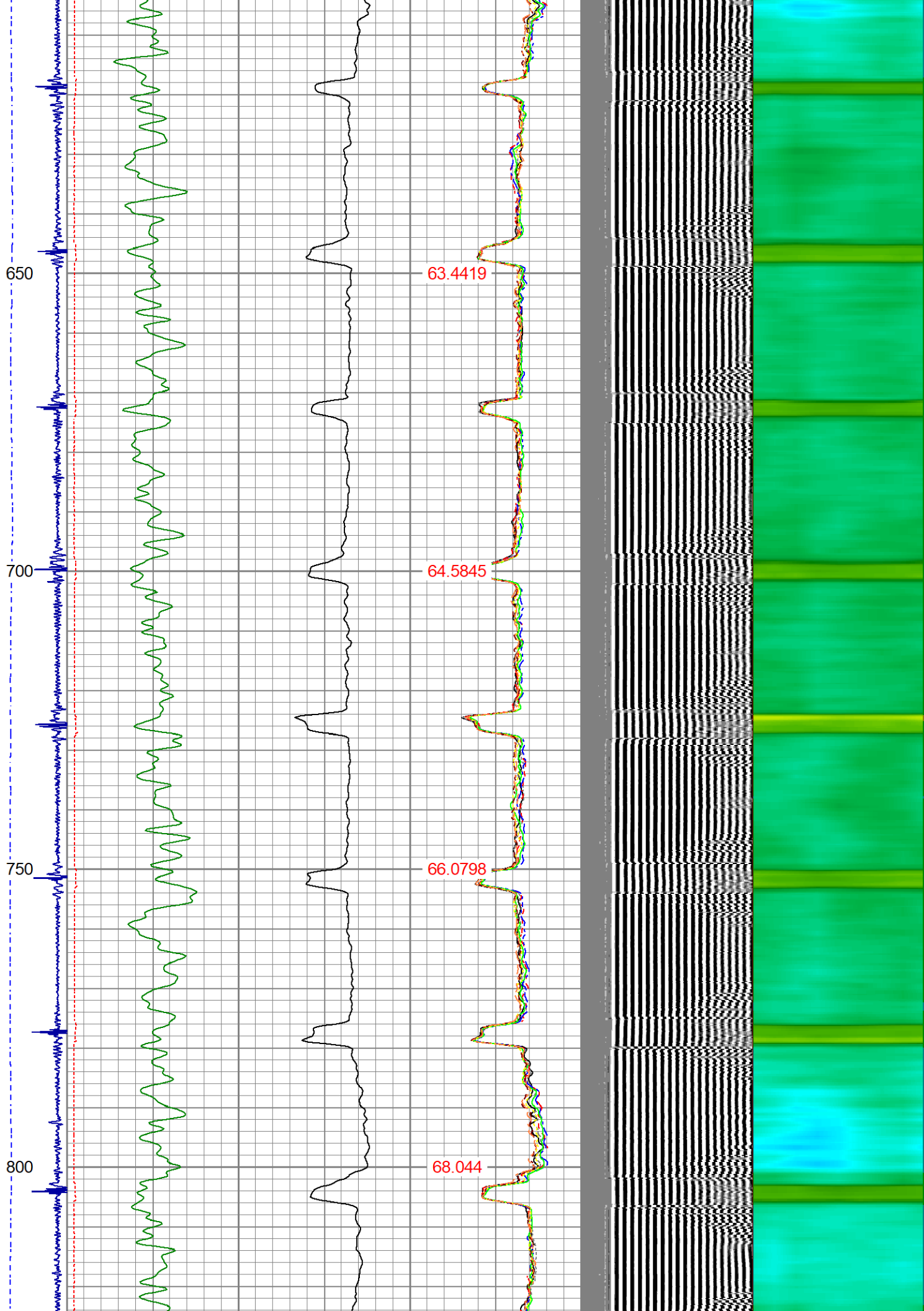
Database File lopresto-pm k #2-2.db
 Dataset Pathname pass1.8
 Presentation Format ips_rbtcolor
 Dataset Creation Fri Oct 14 08:49:53 2022
 Charted by Depth in Feet scaled 1:240

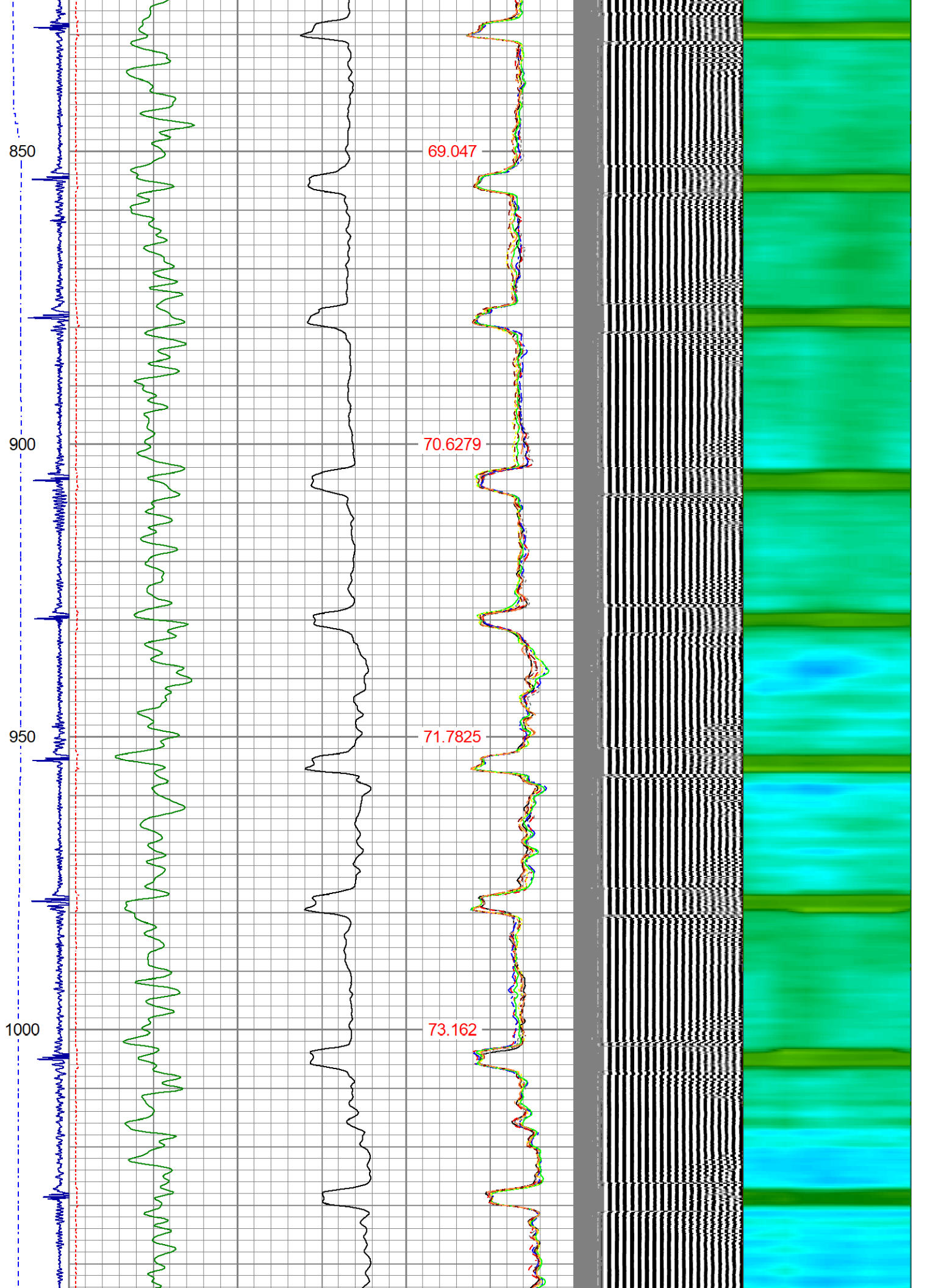
Charted by			Depth in Feet scaled 1.240																			
-9	CCL	1	200	TT (usec)	1000	0	AMP (mV)	100	0	AMPS1	100	200	VDL (usec)	1200	1	Cement Map	8					
LSPD (ft/min)	0		0	GR (GAPI)	200	0	AMPx5 (mV)	20	0	AMPS2	100											
	200		200	GR (GAPI)	400																	
0	250																					
										0	AMPS3	100										
										0	AMPS4	100										
										0	AMPS5	100										
										0	AMPS6	100										
										0	AMPS7	100										
										0	AMPS8	100										
										TEMP												
										(degF)												

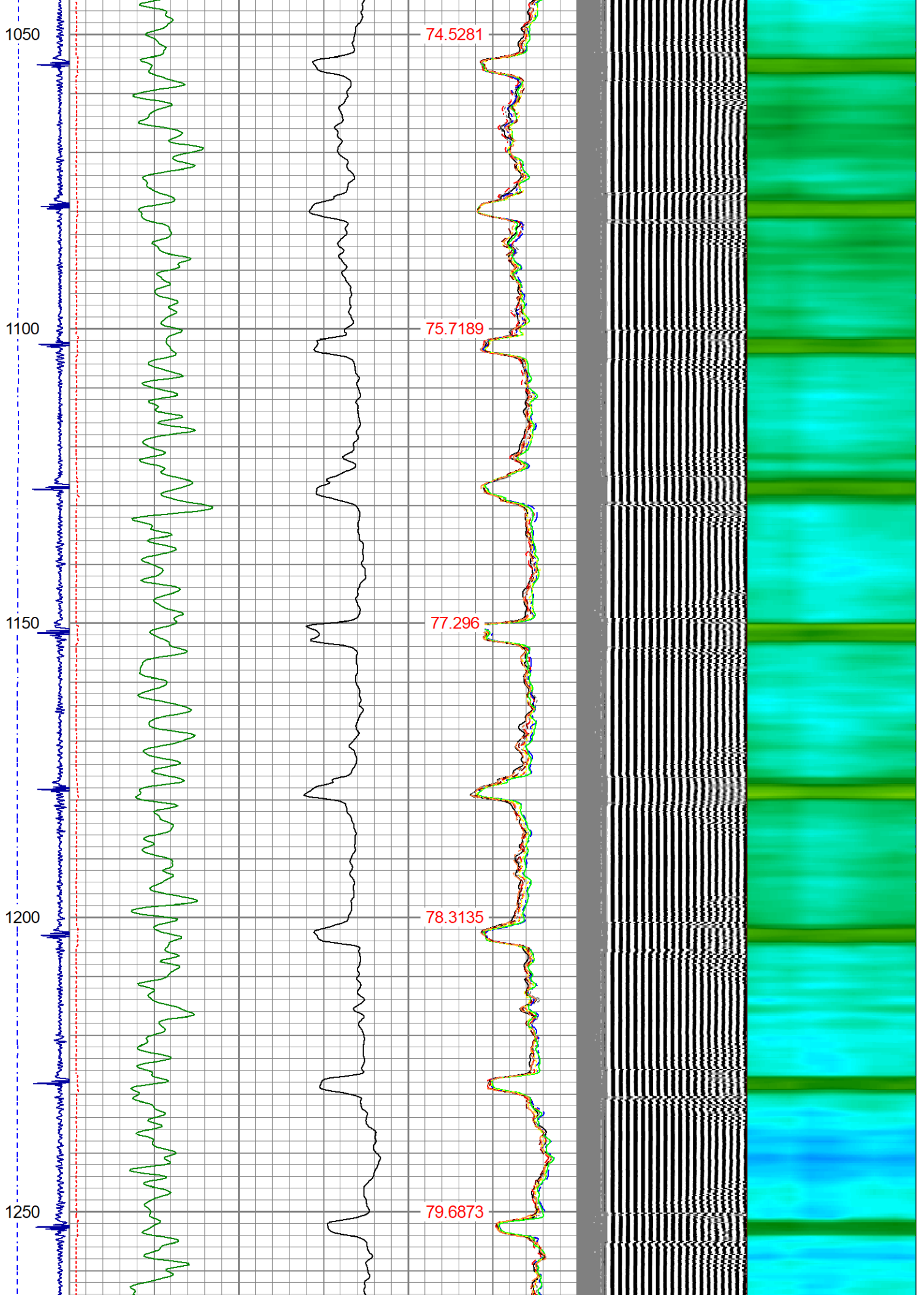


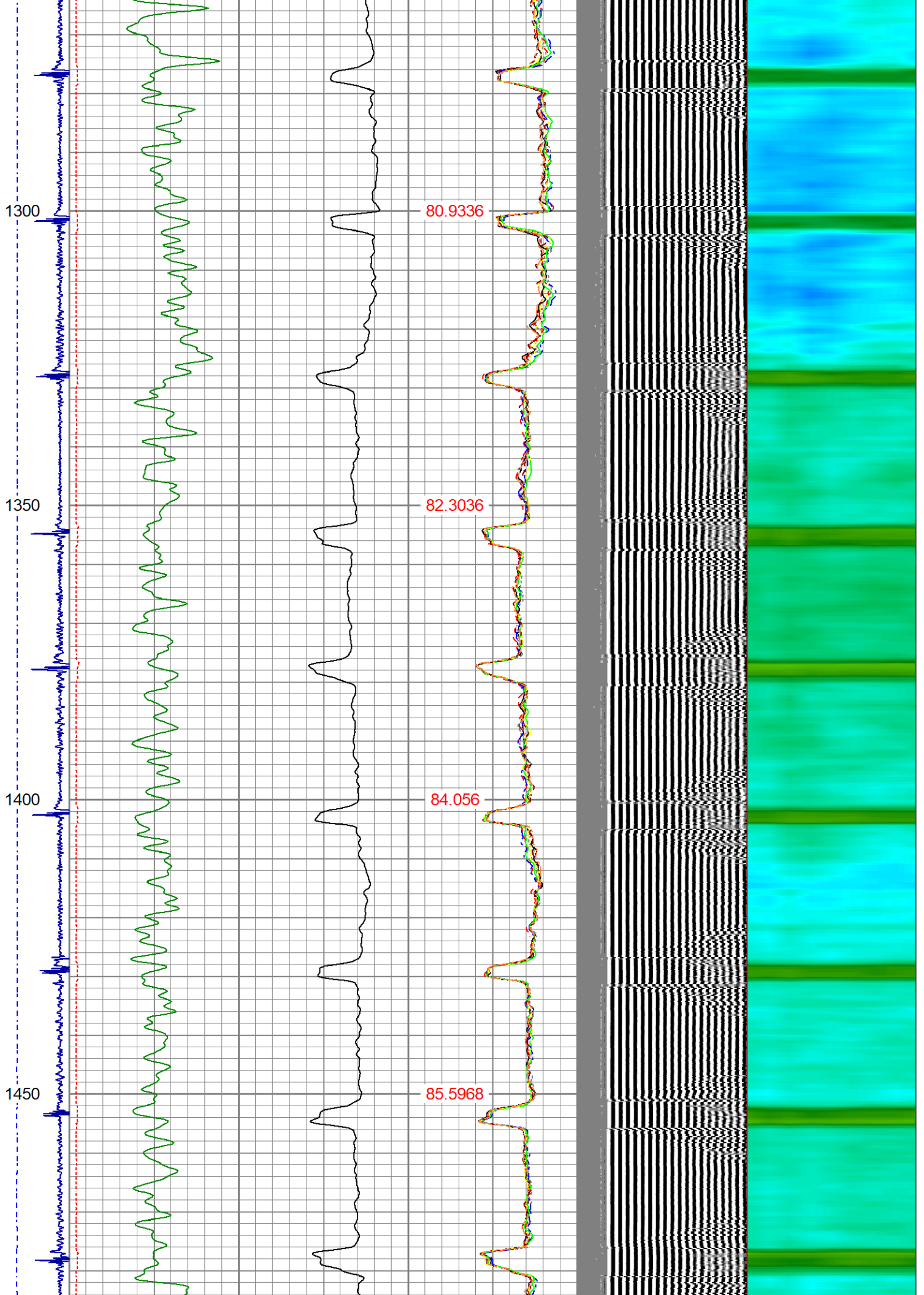


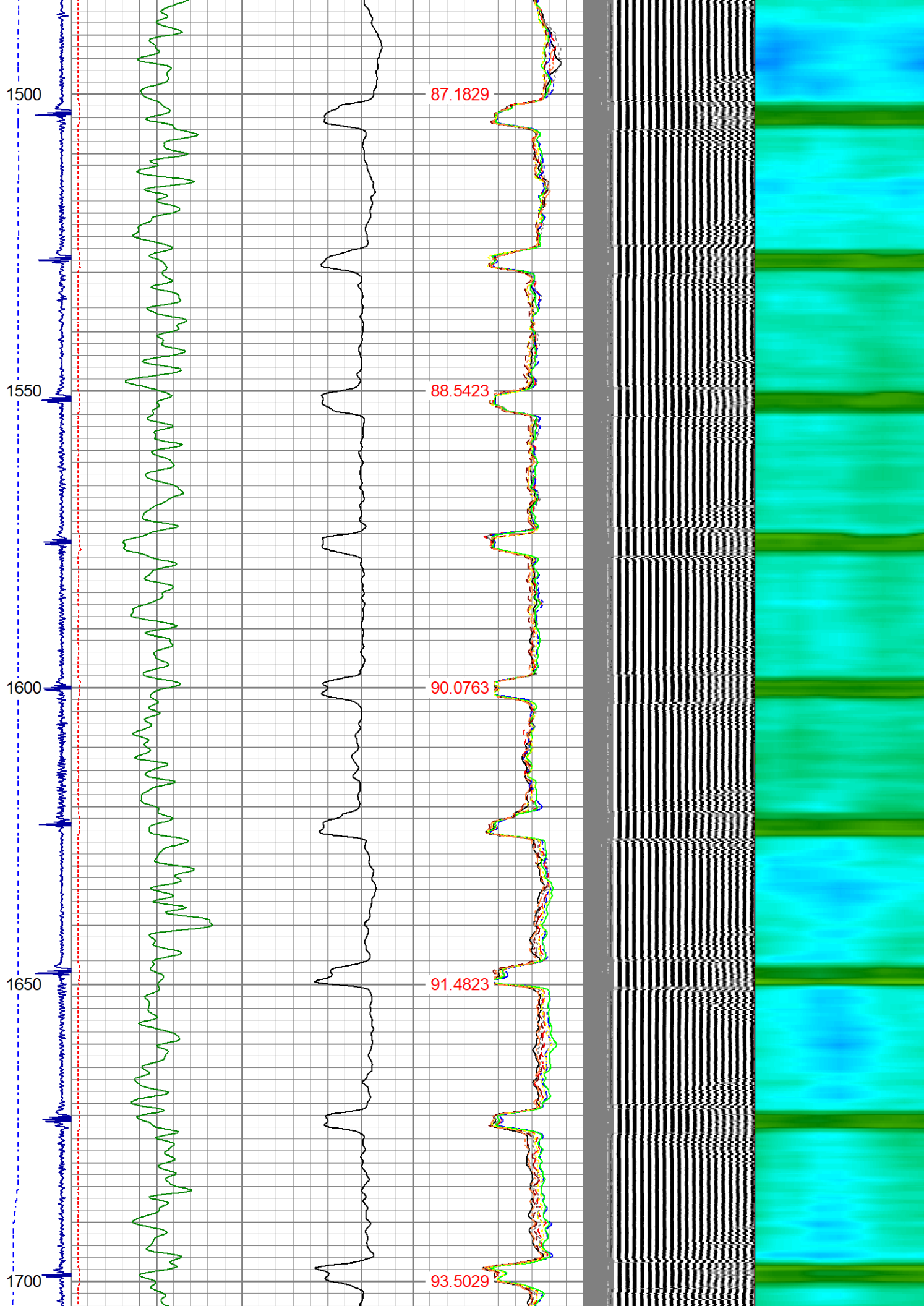


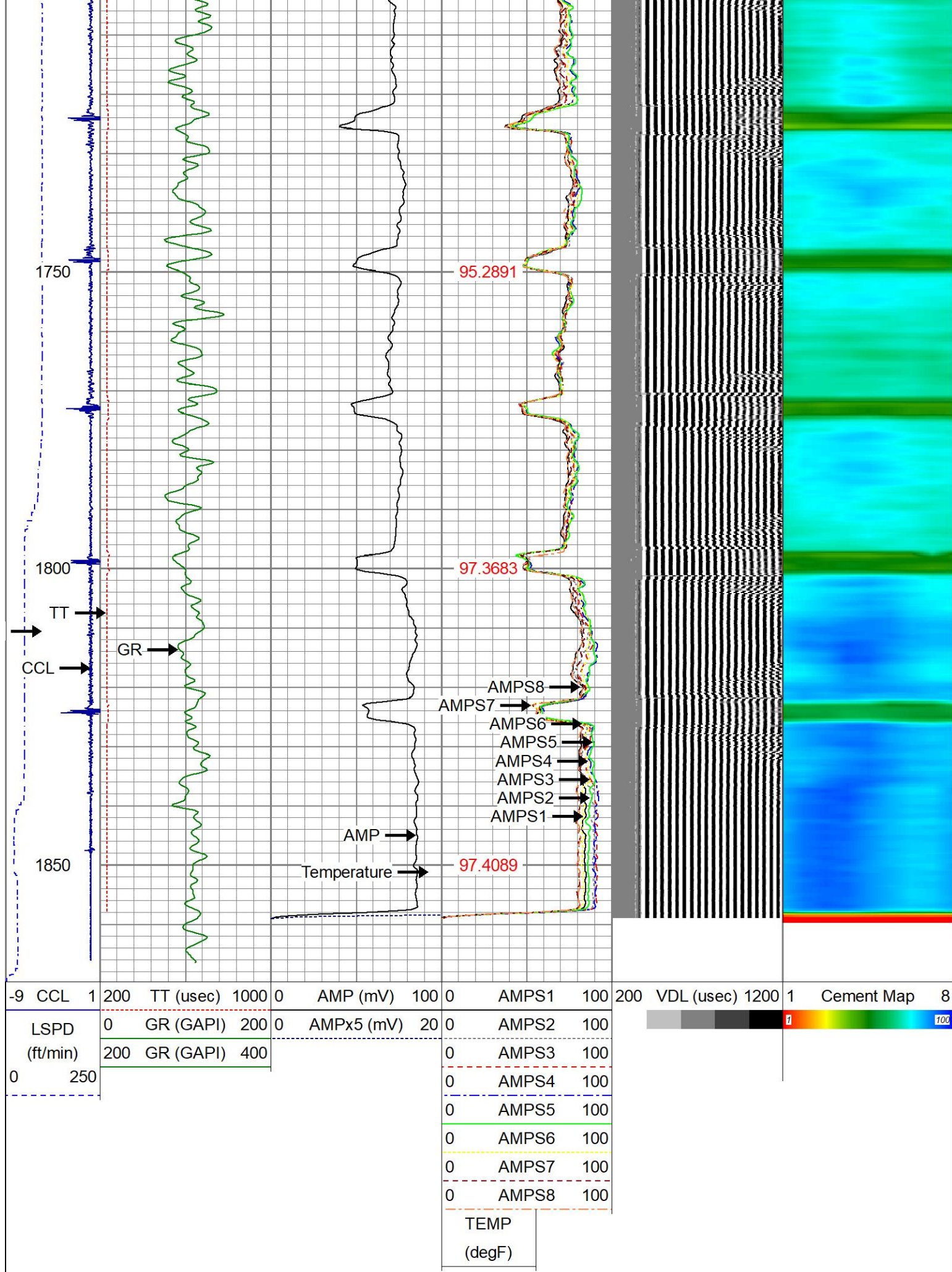













Database File		lopresto-pm k #2-2.db		Calibration Report		
Dataset Pathname		pass1.8				
Dataset Creation		Fri Oct 14 08:49:53 2022				
Gamma Ray Calibration Report						
Serial Number:		27GRL10-XXXX				
Tool Model:		27GRL10				
Performed:		(Not Performed)				
Calibrator Value:		1.0	GAPI			
Background Reading:		0.0	cps			
Calibrator Reading:		1.0	cps			
Sensitivity:		1.0000	GAPI/cps			
Segmented Cement Bond Log Calibration Report						
Serial Number:		Greeley Ext Temp				
Tool Model:		27SBT10				
Calibration Casing Diameter:		4.500	in			
Calibration Depth:		1306.897	ft			
Master Calibration, performed Fri Oct 14 08:44:09 2022:						
	Raw (v)		Calibrated (mv)		Results	
	Zero	Cal	Zero	Cal	Gain	Offset
3'	0.008	0.757	0.250	81.196	108.076	-0.648
CAL	0.003	0.841				
5'	0.021	0.547	0.250	81.196	153.868	-2.936
SUM						
S1	0.019	0.722	0.000	81.196	115.537	-2.165
S2	0.005	0.745	0.000	81.196	109.800	-0.572
S3	0.006	0.763	0.000	81.196	107.235	-0.635
S4	0.006	0.754	0.000	81.196	108.491	-0.642
S5	0.008	0.746	0.000	81.196	110.093	-0.900
S6	0.007	0.750	0.000	81.196	109.327	-0.746
S7	0.006	0.742	0.000	81.196	110.273	-0.631
S8	0.006	0.738	0.000	81.196	110.987	-0.663
Internal Reference Calibration, performed Thu Jun 23 09:23:51 2022:						
	Raw (v)		Calibrated (v)		Results	
	Zero	Cal	Zero	Cal	Gain	Offset
CAL	0.000	0.000	0.003	0.841	1.000	0.000
Air Zero Calibration, performed Fri Oct 14 08:22:02 2022:						
	Raw (v)		Calibrated (v)		Results	
	Zero		Zero		Offset	
3'	0.000		0.000		0.000	
5'	0.000		0.000		0.000	
SUM						
S1	0.000		0.000		0.000	
S2	0.000		0.000		0.000	
S3	0.000		0.000		0.000	

S4	0.000	0.000	0.000
S5	0.000	0.000	0.000
S6	0.000	0.000	0.000
S7	0.000	0.000	0.000
S8	0.000	0.000	0.000

			
Company	CHEVRON		
Well	LOPRESTO-PMK #2-2		
Field	WATTENBERG		
County	WELD		
State	CO	Country	USA