

Project: Rio Blanco County, CO
 Site: ELU O13 496 Pad
 Well: ELU O13 FED 25C-13 496
 Wellbore: Wellbore #1
 Design: Design #4
 Latitude: 39.698696
 Longitude: -108.115081
 Ground Level: 8118.0
 RKB @ 8143.0usft (25')

PROJECT DETAILS: Rio Blanco County, CO

Geodetic System: Universal Transverse Mercator (US Survey Feet)
 Datum: NAD 1927 - Western US
 Ellipsoid: Clarke 1886
 Zone: Zone 12N (114 W to 108 W)
 System Datum: Mean Sea Level

REFERENCE INFORMATION

Vertical (TVD) Reference: RKB @ 8143.0usft (25')
 Section (VS) Reference: Slot - 25C-13(0.0N, 0.0E)
 Measured Depth Reference: RKB @ 8143.0usft (25')
 Calculation Method: Minimum Curvature

FORMATION TOP DETAILS

TVDPath	MDPath	Formation
3971.0	4116.4	Wasatch
6371.0	6629.4	Wasatch G
6671.0	6943.5	Fort Union
8634.0	8980.9	Ohio Creek
9147.0	9494.0	Williams Fork
11785.0	12132.8	Cameo
12335.0	12683.0	Rollins

SECTION DETAILS

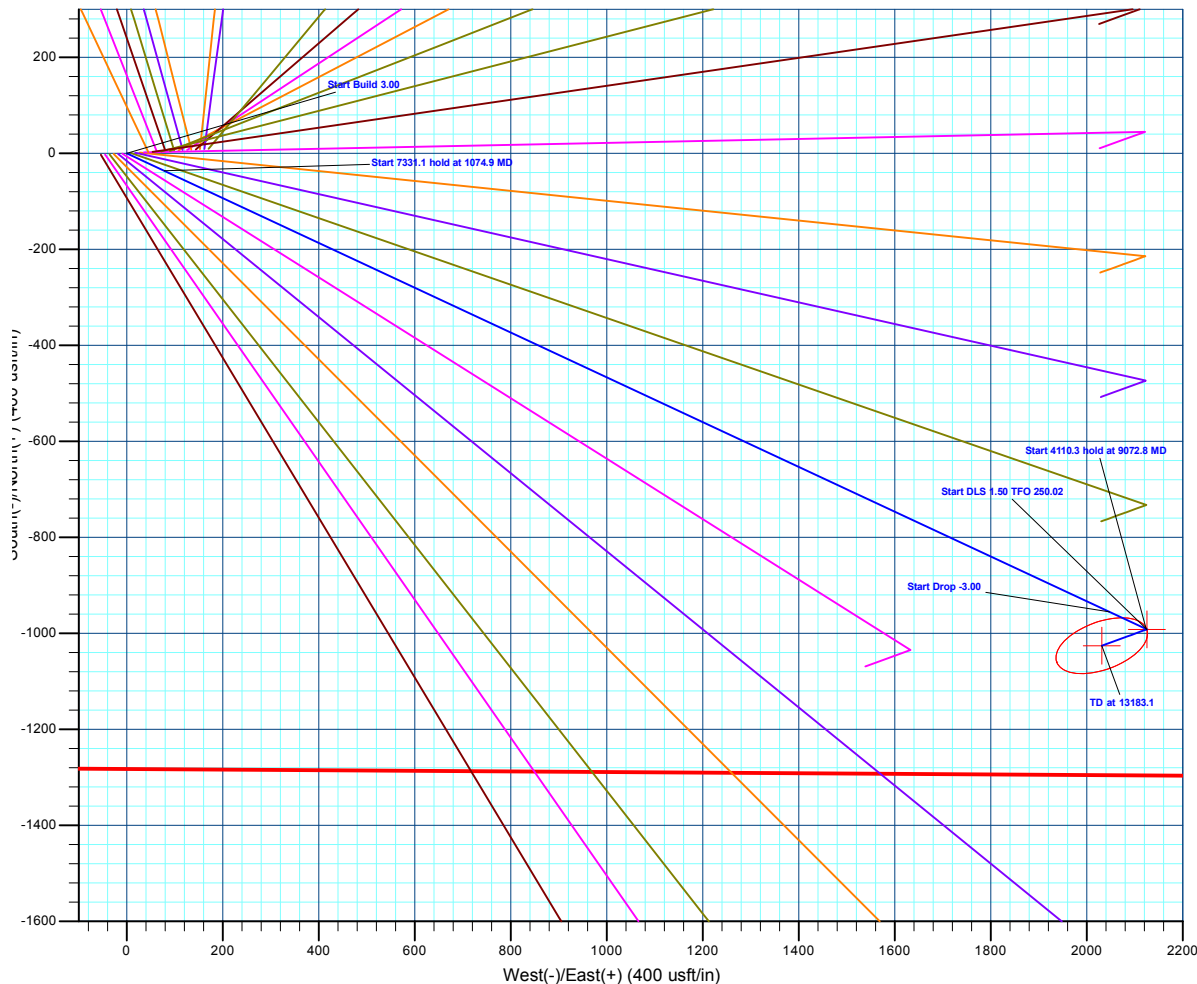
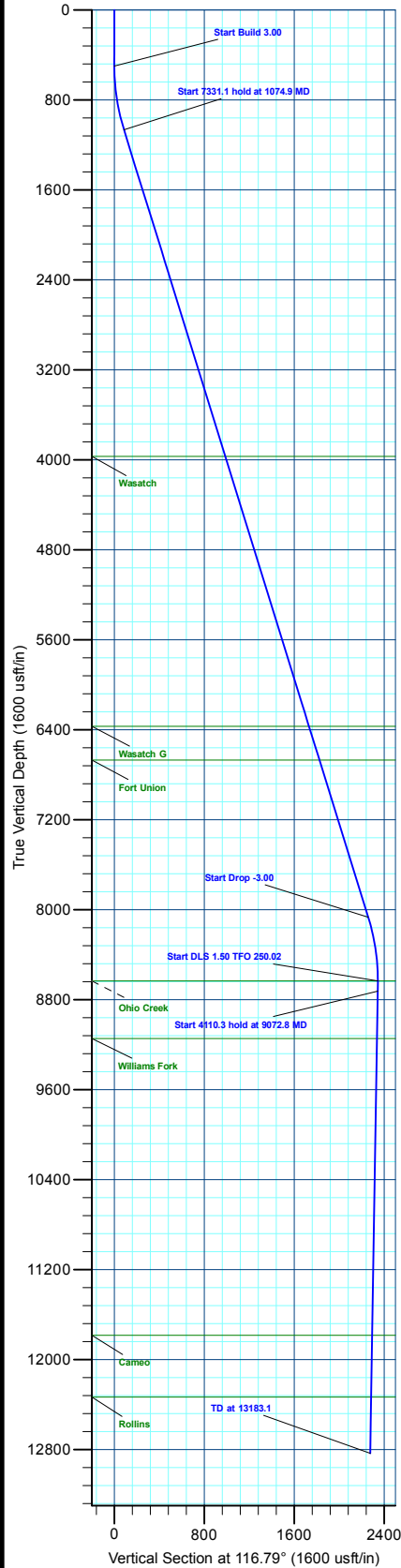
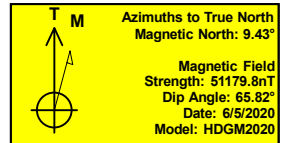
MD	Inc	Azi	TVD	+N/-S	+E/-W	Dleg	TFace	VSect	Annotation
0.0	0.00	0.00	0.0	0.0	0.0	0.00	0.00	0.0	
500.0	0.00	0.00	500.0	0.0	0.0	0.00	0.00	0.0	Start Build 3.00
1074.9	17.25	115.01	1066.2	-36.3	77.8	3.00	115.01	85.8	Start 7331.1 hold at 1074.9 MD
8406.0	17.25	115.01	8067.8	-955.3	2047.5	0.00	0.00	2258.3	Start Drop -3.00
8980.9	0.00	0.00	8634.0	-991.6	2125.3	3.00	180.00	2344.1	Start DLS 1.50 TFO 250.02
9072.8	1.38	250.02	8725.9	-992.0	2124.3	1.50	250.02	2343.4	Start 4110.3 hold at 9072.8 MD
13183.1	1.38	250.02	12835.0	-1025.8	2031.3	0.00	0.00	2275.7	TD at 13183.1

DESIGN TARGET DETAILS

Name	TVD	+N/-S	+E/-W	Northing	Easting	Latitude	Longitude
25C-13 - OHCR	8634.0	-991.6	2125.3	14428465.98	2454121.93	39.695974	-108.107531
25C-13 - PBHL	12835.0	-1025.8	2031.3	14428428.80	2454029.10	39.695880	-108.107865

WELL DETAILS: ELU O13 FED 25C-13 496

+N/-S	+E/-W	Ground Level : 8118.0	Latitude	Longitude
0.0	0.0	Northing 14429388.70 Easting 2451965.80	39.698696	-108.115081



Plan: Design #4 (ELU O13 FED 25C-13 496/Wellbore #1)

Created By: Will Jircik Date: 13:01, February 28 2023



Caerus Oil & Gas

Rio Blanco County, CO

ELU O13 496 Pad

ELU O13 FED 25C-13 496 - Slot 25C-13

Wellbore #1

Plan: Design #4

KLX Well Planning Report

27 February, 2023



Database:	EDM 5000.1 Single User Db	Local Co-ordinate Reference:	Well ELU O13 FED 25C-13 496 - Slot 25C-13
Company:	Caerus Oil & Gas	TVD Reference:	RKB @ 8143.0usft (25')
Project:	Rio Blanco County, CO	MD Reference:	RKB @ 8143.0usft (25')
Site:	ELU O13 496 Pad	North Reference:	True
Well:	ELU O13 FED 25C-13 496	Survey Calculation Method:	Minimum Curvature
Wellbore:	Wellbore #1		
Design:	Design #4		

Project	Rio Blanco County, CO		
Map System:	Universal Transverse Mercator (US Survey Fee	System Datum:	Mean Sea Level
Geo Datum:	NAD 1927 - Western US		
Map Zone:	Zone 12N (114 W to 108 W)		

Site	ELU O13 496 Pad				
Site Position:		Northing:	14,429,398.00 usft	Latitude:	39.698712
From:	Map	Easting:	2,452,071.40 usft	Longitude:	-108.114705
Position Uncertainty:	0.0 usft	Slot Radius:	13-3/16 "	Grid Convergence:	1.84 °

Well	ELU O13 FED 25C-13 496 - Slot 25C-13					
Well Position	+N/-S	-5.9 usft	Northing:	14,429,388.70 usft	Latitude:	39.698696
	+E/-W	-105.8 usft	Easting:	2,451,965.80 usft	Longitude:	-108.115081
Position Uncertainty	0.0 usft		Wellhead Elevation:		Ground Level:	8,118.0 usft

Wellbore	Wellbore #1				
-----------------	-------------	--	--	--	--

Magnetics	Model Name	Sample Date	Declination (°)	Dip Angle (°)	Field Strength (nT)
	HDGM2020	6/5/2020	9.43	65.82	51,179.80000000

Design	Design #4				
---------------	-----------	--	--	--	--

Audit Notes:					
Version:	Phase:	PLAN	Tie On Depth:	0.0	
Vertical Section:	Depth From (TVD) (usft)	+N/-S (usft)	+E/-W (usft)	Direction (°)	
	0.0	0.0	0.0	116.79	

Plan Sections										
Measured Depth (usft)	Inclination (°)	Azimuth (°)	Vertical Depth (usft)	+N/-S (usft)	+E/-W (usft)	Dogleg Rate (°/100usft)	Build Rate (°/100usft)	Turn Rate (°/100usft)	TFO (°)	Target
0.0	0.00	0.00	0.0	0.0	0.0	0.00	0.00	0.00	0.00	
500.0	0.00	0.00	500.0	0.0	0.0	0.00	0.00	0.00	0.00	
1,074.9	17.25	115.01	1,066.2	-36.3	77.8	3.00	3.00	0.00	115.01	
8,406.0	17.25	115.01	8,067.8	-955.3	2,047.5	0.00	0.00	0.00	0.00	
8,980.9	0.00	0.00	8,634.0	-991.6	2,125.3	3.00	-3.00	0.00	180.00	25C-13 - OHCR
9,072.8	1.38	250.02	8,725.9	-992.0	2,124.3	1.50	1.50	-119.66	250.02	
13,183.1	1.38	250.02	12,835.0	-1,025.8	2,031.3	0.00	0.00	0.00	0.00	25C-13 - PBHL

Database:	EDM 5000.1 Single User Db	Local Co-ordinate Reference:	Well ELU O13 FED 25C-13 496 - Slot 25C-13
Company:	Caerus Oil & Gas	TVD Reference:	RKB @ 8143.0usft (25')
Project:	Rio Blanco County, CO	MD Reference:	RKB @ 8143.0usft (25')
Site:	ELU O13 496 Pad	North Reference:	True
Well:	ELU O13 FED 25C-13 496	Survey Calculation Method:	Minimum Curvature
Wellbore:	Wellbore #1		
Design:	Design #4		

Planned Survey									
Measured Depth (usft)	Inclination (°)	Azimuth (°)	Vertical Depth (usft)	+N/-S (usft)	+E/-W (usft)	Vertical Section (usft)	Dogleg Rate (°/100usft)	Build Rate (°/100usft)	Turn Rate (°/100usft)
0.0	0.00	0.00	0.0	0.0	0.0	0.0	0.00	0.00	0.00
100.0	0.00	0.00	100.0	0.0	0.0	0.0	0.00	0.00	0.00
200.0	0.00	0.00	200.0	0.0	0.0	0.0	0.00	0.00	0.00
300.0	0.00	0.00	300.0	0.0	0.0	0.0	0.00	0.00	0.00
400.0	0.00	0.00	400.0	0.0	0.0	0.0	0.00	0.00	0.00
Start Build 3.00									
500.0	0.00	0.00	500.0	0.0	0.0	0.0	0.00	0.00	0.00
600.0	3.00	115.01	600.0	-1.1	2.4	2.6	3.00	3.00	0.00
700.0	6.00	115.01	699.6	-4.4	9.5	10.5	3.00	3.00	0.00
800.0	9.00	115.01	798.8	-9.9	21.3	23.5	3.00	3.00	0.00
900.0	12.00	115.01	897.1	-17.6	37.8	41.7	3.00	3.00	0.00
1,000.0	15.00	115.01	994.3	-27.5	59.0	65.0	3.00	3.00	0.00
Start 7331.1 hold at 1074.9 MD									
1,074.9	17.25	115.01	1,066.2	-36.3	77.8	85.8	3.00	3.00	0.00
1,100.0	17.25	115.01	1,090.2	-39.5	84.6	93.3	0.00	0.00	0.00
1,200.0	17.25	115.01	1,185.7	-52.0	111.4	122.9	0.00	0.00	0.00
1,300.0	17.25	115.01	1,281.2	-64.5	138.3	152.5	0.00	0.00	0.00
1,400.0	17.25	115.01	1,376.7	-77.1	165.2	182.2	0.00	0.00	0.00
1,500.0	17.25	115.01	1,472.2	-89.6	192.0	211.8	0.00	0.00	0.00
1,600.0	17.25	115.01	1,567.7	-102.1	218.9	241.4	0.00	0.00	0.00
1,700.0	17.25	115.01	1,663.3	-114.7	245.8	271.1	0.00	0.00	0.00
1,800.0	17.25	115.01	1,758.8	-127.2	272.6	300.7	0.00	0.00	0.00
1,900.0	17.25	115.01	1,854.3	-139.7	299.5	330.3	0.00	0.00	0.00
2,000.0	17.25	115.01	1,949.8	-152.3	326.4	360.0	0.00	0.00	0.00
2,100.0	17.25	115.01	2,045.3	-164.8	353.2	389.6	0.00	0.00	0.00
2,200.0	17.25	115.01	2,140.8	-177.3	380.1	419.2	0.00	0.00	0.00
2,300.0	17.25	115.01	2,236.3	-189.9	407.0	448.9	0.00	0.00	0.00
2,400.0	17.25	115.01	2,331.8	-202.4	433.8	478.5	0.00	0.00	0.00
2,500.0	17.25	115.01	2,427.3	-215.0	460.7	508.1	0.00	0.00	0.00
2,600.0	17.25	115.01	2,522.8	-227.5	487.6	537.8	0.00	0.00	0.00
2,700.0	17.25	115.01	2,618.3	-240.0	514.4	567.4	0.00	0.00	0.00
2,800.0	17.25	115.01	2,713.8	-252.6	541.3	597.0	0.00	0.00	0.00
2,900.0	17.25	115.01	2,809.3	-265.1	568.2	626.7	0.00	0.00	0.00
3,000.0	17.25	115.01	2,904.8	-277.6	595.0	656.3	0.00	0.00	0.00
3,100.0	17.25	115.01	3,000.3	-290.2	621.9	685.9	0.00	0.00	0.00
3,200.0	17.25	115.01	3,095.8	-302.7	648.8	715.6	0.00	0.00	0.00
3,300.0	17.25	115.01	3,191.3	-315.2	675.7	745.2	0.00	0.00	0.00
3,400.0	17.25	115.01	3,286.8	-327.8	702.5	774.8	0.00	0.00	0.00
3,500.0	17.25	115.01	3,382.3	-340.3	729.4	804.5	0.00	0.00	0.00
3,600.0	17.25	115.01	3,477.8	-352.8	756.3	834.1	0.00	0.00	0.00
3,700.0	17.25	115.01	3,573.3	-365.4	783.1	863.7	0.00	0.00	0.00
3,800.0	17.25	115.01	3,668.8	-377.9	810.0	893.4	0.00	0.00	0.00
3,900.0	17.25	115.01	3,764.3	-390.5	836.9	923.0	0.00	0.00	0.00
4,000.0	17.25	115.01	3,859.8	-403.0	863.7	952.6	0.00	0.00	0.00
4,100.0	17.25	115.01	3,955.3	-415.5	890.6	982.3	0.00	0.00	0.00
Wasatch									
4,116.4	17.25	115.01	3,971.0	-417.6	895.0	987.1	0.00	0.00	0.00
4,200.0	17.25	115.01	4,050.8	-428.1	917.5	1,011.9	0.00	0.00	0.00
4,300.0	17.25	115.01	4,146.4	-440.6	944.3	1,041.5	0.00	0.00	0.00
4,400.0	17.25	115.01	4,241.9	-453.1	971.2	1,071.2	0.00	0.00	0.00
4,500.0	17.25	115.01	4,337.4	-465.7	998.1	1,100.8	0.00	0.00	0.00
4,600.0	17.25	115.01	4,432.9	-478.2	1,024.9	1,130.5	0.00	0.00	0.00
4,700.0	17.25	115.01	4,528.4	-490.7	1,051.8	1,160.1	0.00	0.00	0.00

Database:	EDM 5000.1 Single User Db	Local Co-ordinate Reference:	Well ELU O13 FED 25C-13 496 - Slot 25C-13
Company:	Caerus Oil & Gas	TVD Reference:	RKB @ 8143.0usft (25')
Project:	Rio Blanco County, CO	MD Reference:	RKB @ 8143.0usft (25')
Site:	ELU O13 496 Pad	North Reference:	True
Well:	ELU O13 FED 25C-13 496	Survey Calculation Method:	Minimum Curvature
Wellbore:	Wellbore #1		
Design:	Design #4		

Planned Survey									
Measured Depth (usft)	Inclination (°)	Azimuth (°)	Vertical Depth (usft)	+N/-S (usft)	+E/-W (usft)	Vertical Section (usft)	Dogleg Rate (°/100usft)	Build Rate (°/100usft)	Turn Rate (°/100usft)
4,800.0	17.25	115.01	4,623.9	-503.3	1,078.7	1,189.7	0.00	0.00	0.00
4,900.0	17.25	115.01	4,719.4	-515.8	1,105.5	1,219.4	0.00	0.00	0.00
5,000.0	17.25	115.01	4,814.9	-528.3	1,132.4	1,249.0	0.00	0.00	0.00
5,100.0	17.25	115.01	4,910.4	-540.9	1,159.3	1,278.6	0.00	0.00	0.00
5,200.0	17.25	115.01	5,005.9	-553.4	1,186.1	1,308.3	0.00	0.00	0.00
5,300.0	17.25	115.01	5,101.4	-566.0	1,213.0	1,337.9	0.00	0.00	0.00
5,400.0	17.25	115.01	5,196.9	-578.5	1,239.9	1,367.5	0.00	0.00	0.00
5,500.0	17.25	115.01	5,292.4	-591.0	1,266.7	1,397.2	0.00	0.00	0.00
5,600.0	17.25	115.01	5,387.9	-603.6	1,293.6	1,426.8	0.00	0.00	0.00
5,700.0	17.25	115.01	5,483.4	-616.1	1,320.5	1,456.4	0.00	0.00	0.00
5,800.0	17.25	115.01	5,578.9	-628.6	1,347.3	1,486.1	0.00	0.00	0.00
5,900.0	17.25	115.01	5,674.4	-641.2	1,374.2	1,515.7	0.00	0.00	0.00
6,000.0	17.25	115.01	5,769.9	-653.7	1,401.1	1,545.3	0.00	0.00	0.00
6,100.0	17.25	115.01	5,865.4	-666.2	1,427.9	1,575.0	0.00	0.00	0.00
6,200.0	17.25	115.01	5,960.9	-678.8	1,454.8	1,604.6	0.00	0.00	0.00
6,300.0	17.25	115.01	6,056.4	-691.3	1,481.7	1,634.2	0.00	0.00	0.00
6,400.0	17.25	115.01	6,151.9	-703.8	1,508.5	1,663.9	0.00	0.00	0.00
6,500.0	17.25	115.01	6,247.4	-716.4	1,535.4	1,693.5	0.00	0.00	0.00
6,600.0	17.25	115.01	6,342.9	-728.9	1,562.3	1,723.1	0.00	0.00	0.00
Wasatch G									
6,629.4	17.25	115.01	6,371.0	-732.6	1,570.2	1,731.8	0.00	0.00	0.00
6,700.0	17.25	115.01	6,438.4	-741.4	1,589.1	1,752.8	0.00	0.00	0.00
6,800.0	17.25	115.01	6,534.0	-754.0	1,616.0	1,782.4	0.00	0.00	0.00
6,900.0	17.25	115.01	6,629.5	-766.5	1,642.9	1,812.0	0.00	0.00	0.00
Fort Union									
6,943.5	17.25	115.01	6,671.0	-772.0	1,654.6	1,824.9	0.00	0.00	0.00
7,000.0	17.25	115.01	6,725.0	-779.1	1,669.7	1,841.7	0.00	0.00	0.00
7,100.0	17.25	115.01	6,820.5	-791.6	1,696.6	1,871.3	0.00	0.00	0.00
7,200.0	17.25	115.01	6,916.0	-804.1	1,723.5	1,900.9	0.00	0.00	0.00
7,300.0	17.25	115.01	7,011.5	-816.7	1,750.3	1,930.6	0.00	0.00	0.00
7,400.0	17.25	115.01	7,107.0	-829.2	1,777.2	1,960.2	0.00	0.00	0.00
7,500.0	17.25	115.01	7,202.5	-841.7	1,804.1	1,989.8	0.00	0.00	0.00
7,600.0	17.25	115.01	7,298.0	-854.3	1,831.0	2,019.5	0.00	0.00	0.00
7,700.0	17.25	115.01	7,393.5	-866.8	1,857.8	2,049.1	0.00	0.00	0.00
7,800.0	17.25	115.01	7,489.0	-879.3	1,884.7	2,078.7	0.00	0.00	0.00
7,900.0	17.25	115.01	7,584.5	-891.9	1,911.6	2,108.4	0.00	0.00	0.00
8,000.0	17.25	115.01	7,680.0	-904.4	1,938.4	2,138.0	0.00	0.00	0.00
8,100.0	17.25	115.01	7,775.5	-916.9	1,965.3	2,167.6	0.00	0.00	0.00
8,200.0	17.25	115.01	7,871.0	-929.5	1,992.2	2,197.3	0.00	0.00	0.00
8,300.0	17.25	115.01	7,966.5	-942.0	2,019.0	2,226.9	0.00	0.00	0.00
Start Drop -3.00									
8,406.0	17.25	115.01	8,067.8	-955.3	2,047.5	2,258.3	0.00	0.00	0.00
8,500.0	14.43	115.01	8,158.2	-966.2	2,070.7	2,283.9	3.00	-3.00	0.00
8,600.0	11.43	115.01	8,255.6	-975.6	2,091.0	2,306.3	3.00	-3.00	0.00
8,700.0	8.43	115.01	8,354.1	-982.9	2,106.6	2,323.5	3.00	-3.00	0.00
8,800.0	5.43	115.01	8,453.4	-988.0	2,117.6	2,335.6	3.00	-3.00	0.00
8,900.0	2.43	115.01	8,553.1	-990.9	2,123.8	2,342.4	3.00	-3.00	0.00
Start DLS 1.50 TFO 250.02 - Ohio Creek									
8,980.9	0.00	0.00	8,634.0	-991.6	2,125.3	2,344.1	3.00	-3.00	0.00
9,000.0	0.29	250.02	8,653.1	-991.6	2,125.3	2,344.1	1.50	1.50	0.00
Start 4110.3 hold at 9072.8 MD									
9,072.8	1.38	250.02	8,725.9	-992.0	2,124.3	2,343.4	1.50	1.50	0.00
9,100.0	1.38	250.02	8,753.1	-992.2	2,123.7	2,342.9	0.00	0.00	0.00
9,200.0	1.38	250.02	8,853.1	-993.0	2,121.4	2,341.3	0.00	0.00	0.00

Database:	EDM 5000.1 Single User Db	Local Co-ordinate Reference:	Well ELU O13 FED 25C-13 496 - Slot 25C-13
Company:	Caerus Oil & Gas	TVD Reference:	RKB @ 8143.0usft (25')
Project:	Rio Blanco County, CO	MD Reference:	RKB @ 8143.0usft (25')
Site:	ELU O13 496 Pad	North Reference:	True
Well:	ELU O13 FED 25C-13 496	Survey Calculation Method:	Minimum Curvature
Wellbore:	Wellbore #1		
Design:	Design #4		

Planned Survey									
Measured Depth (usft)	Inclination (°)	Azimuth (°)	Vertical Depth (usft)	+N/-S (usft)	+E/-W (usft)	Vertical Section (usft)	Dogleg Rate (°/100usft)	Build Rate (°/100usft)	Turn Rate (°/100usft)
9,300.0	1.38	250.02	8,953.0	-993.9	2,119.1	2,339.6	0.00	0.00	0.00
9,400.0	1.38	250.02	9,053.0	-994.7	2,116.9	2,338.0	0.00	0.00	0.00
Williams Fork									
9,494.0	1.38	250.02	9,147.0	-995.5	2,114.8	2,336.4	0.00	0.00	0.00
9,500.0	1.38	250.02	9,153.0	-995.5	2,114.6	2,336.3	0.00	0.00	0.00
9,600.0	1.38	250.02	9,252.9	-996.3	2,112.4	2,334.7	0.00	0.00	0.00
9,700.0	1.38	250.02	9,352.9	-997.1	2,110.1	2,333.0	0.00	0.00	0.00
9,800.0	1.38	250.02	9,452.9	-998.0	2,107.8	2,331.4	0.00	0.00	0.00
9,900.0	1.38	250.02	9,552.9	-998.8	2,105.6	2,329.8	0.00	0.00	0.00
10,000.0	1.38	250.02	9,652.8	-999.6	2,103.3	2,328.1	0.00	0.00	0.00
10,100.0	1.38	250.02	9,752.8	-1,000.4	2,101.1	2,326.5	0.00	0.00	0.00
10,200.0	1.38	250.02	9,852.8	-1,001.3	2,098.8	2,324.8	0.00	0.00	0.00
10,300.0	1.38	250.02	9,952.7	-1,002.1	2,096.5	2,323.2	0.00	0.00	0.00
10,400.0	1.38	250.02	10,052.7	-1,002.9	2,094.3	2,321.5	0.00	0.00	0.00
10,500.0	1.38	250.02	10,152.7	-1,003.7	2,092.0	2,319.9	0.00	0.00	0.00
10,600.0	1.38	250.02	10,252.7	-1,004.5	2,089.8	2,318.2	0.00	0.00	0.00
10,700.0	1.38	250.02	10,352.6	-1,005.4	2,087.5	2,316.6	0.00	0.00	0.00
10,800.0	1.38	250.02	10,452.6	-1,006.2	2,085.2	2,314.9	0.00	0.00	0.00
10,900.0	1.38	250.02	10,552.6	-1,007.0	2,083.0	2,313.3	0.00	0.00	0.00
11,000.0	1.38	250.02	10,652.5	-1,007.8	2,080.7	2,311.6	0.00	0.00	0.00
11,100.0	1.38	250.02	10,752.5	-1,008.7	2,078.4	2,310.0	0.00	0.00	0.00
11,200.0	1.38	250.02	10,852.5	-1,009.5	2,076.2	2,308.3	0.00	0.00	0.00
11,300.0	1.38	250.02	10,952.4	-1,010.3	2,073.9	2,306.7	0.00	0.00	0.00
11,400.0	1.38	250.02	11,052.4	-1,011.1	2,071.7	2,305.0	0.00	0.00	0.00
11,500.0	1.38	250.02	11,152.4	-1,011.9	2,069.4	2,303.4	0.00	0.00	0.00
11,600.0	1.38	250.02	11,252.4	-1,012.8	2,067.1	2,301.7	0.00	0.00	0.00
11,700.0	1.38	250.02	11,352.3	-1,013.6	2,064.9	2,300.1	0.00	0.00	0.00
11,800.0	1.38	250.02	11,452.3	-1,014.4	2,062.6	2,298.4	0.00	0.00	0.00
11,900.0	1.38	250.02	11,552.3	-1,015.2	2,060.4	2,296.8	0.00	0.00	0.00
12,000.0	1.38	250.02	11,652.2	-1,016.1	2,058.1	2,295.2	0.00	0.00	0.00
12,100.0	1.38	250.02	11,752.2	-1,016.9	2,055.8	2,293.5	0.00	0.00	0.00
Cameo									
12,132.8	1.38	250.02	11,785.0	-1,017.2	2,055.1	2,293.0	0.00	0.00	0.00
12,200.0	1.38	250.02	11,852.2	-1,017.7	2,053.6	2,291.9	0.00	0.00	0.00
12,300.0	1.38	250.02	11,952.2	-1,018.5	2,051.3	2,290.2	0.00	0.00	0.00
12,400.0	1.38	250.02	12,052.1	-1,019.4	2,049.1	2,288.6	0.00	0.00	0.00
12,500.0	1.38	250.02	12,152.1	-1,020.2	2,046.8	2,286.9	0.00	0.00	0.00
12,600.0	1.38	250.02	12,252.1	-1,021.0	2,044.5	2,285.3	0.00	0.00	0.00
Rollins									
12,683.0	1.38	250.02	12,335.0	-1,021.7	2,042.7	2,283.9	0.00	0.00	0.00
12,700.0	1.38	250.02	12,352.0	-1,021.8	2,042.3	2,283.6	0.00	0.00	0.00
12,800.0	1.38	250.02	12,452.0	-1,022.6	2,040.0	2,282.0	0.00	0.00	0.00
12,900.0	1.38	250.02	12,552.0	-1,023.5	2,037.7	2,280.3	0.00	0.00	0.00
13,000.0	1.38	250.02	12,652.0	-1,024.3	2,035.5	2,278.7	0.00	0.00	0.00
13,100.0	1.38	250.02	12,751.9	-1,025.1	2,033.2	2,277.0	0.00	0.00	0.00
TD at 13183.1									
13,183.1	1.38	250.02	12,835.0	-1,025.8	2,031.3	2,275.7	0.00	0.00	0.00

Database:	EDM 5000.1 Single User Db	Local Co-ordinate Reference:	Well ELU O13 FED 25C-13 496 - Slot 25C-13
Company:	Caerus Oil & Gas	TVD Reference:	RKB @ 8143.0usft (25')
Project:	Rio Blanco County, CO	MD Reference:	RKB @ 8143.0usft (25')
Site:	ELU O13 496 Pad	North Reference:	True
Well:	ELU O13 FED 25C-13 496	Survey Calculation Method:	Minimum Curvature
Wellbore:	Wellbore #1		
Design:	Design #4		

Design Targets

Target Name

- hit/miss target	Dip Angle	Dip Dir.	TVD	+N/-S	+E/-W	Northing	Easting	Latitude	Longitude
- Shape	(°)	(°)	(usft)	(usft)	(usft)	(usft)	(usft)		
25C-13 - OHCR	0.00	0.00	8,634.0	-991.6	2,125.3	14,428,465.98	2,454,121.93	39.695974	-108.107531
- plan hits target center									
- Point									
25C-13 - PBHL	0.00	0.00	12,835.0	-1,025.8	2,031.3	14,428,428.80	2,454,029.10	39.695880	-108.107865
- plan hits target center									
- Ellipse (radii L100.0 W50.0 on 250.00 azi)									

Formations

Measured Depth	Vertical Depth	Name	Lithology	Dip	Dip Direction
(usft)	(usft)			(°)	(°)
4,116.4	3,971.0	Wasatch			
6,629.4	6,371.0	Wasatch G			
6,943.5	6,671.0	Fort Union			
8,980.9	8,634.0	Ohio Creek			
9,494.0	9,147.0	Williams Fork			
12,132.8	11,785.0	Cameo			
12,683.0	12,335.0	Rollins			

Plan Annotations

Measured Depth	Vertical Depth	Local Coordinates		Comment
(usft)	(usft)	+N/-S	+E/-W	
(usft)	(usft)	(usft)	(usft)	
500.0	500.0	0.0	0.0	Start Build 3.00
1,074.9	1,066.2	-36.3	77.8	Start 7331.1 hold at 1074.9 MD
8,406.0	8,067.8	-955.3	2,047.5	Start Drop -3.00
8,980.9	8,634.0	-991.6	2,125.3	Start DLS 1.50 TFO 250.02
9,072.8	8,725.9	-992.0	2,124.3	Start 4110.3 hold at 9072.8 MD
13,183.1	12,835.0	-1,025.8	2,031.3	TD at 13183.1