

Project: Rio Blanco County, CO  
Site: ELU O13 496 Pad  
Well: ELU O13 FED 12D-13 496  
Wellbore: Wellbore #1  
Design: Design #4  
Latitude: 39.698711  
Longitude: -108.114730  
Ground Level: 8118.0  
RKB @ 8143.0usft (25')

PROJECT DETAILS: Rio Blanco County, CO

Geodetic System: Universal Transverse Mercator (US Survey Feet)  
Datum: NAD 1927 - Western US  
Ellipsoid: Clarke 1866  
Zone: Zone 12N (114 W to 108 W)  
System Datum: Mean Sea Level

REFERENCE INFORMATION

Vertical (TVD) Reference: RKB @ 8143.0usft (25')  
Section (VS) Reference: Slot - 12D-13(0.0N, 0.0E)  
Measured Depth Reference: RKB @ 8143.0usft (25')  
Calculation Method: Minimum Curvature

FORMATION TOP DETAILS

TVDPath	MDPath	Formation
4025.0	4125.0	Wasatch
6425.0	6599.8	Wasatch G
6725.0	6909.1	Fort Union
8602.0	8834.8	Ohio Creek
9148.0	9380.9	Williams Fork
11801.0	12034.7	Cameo
12351.0	12584.8	Rollins

SECTION DETAILS

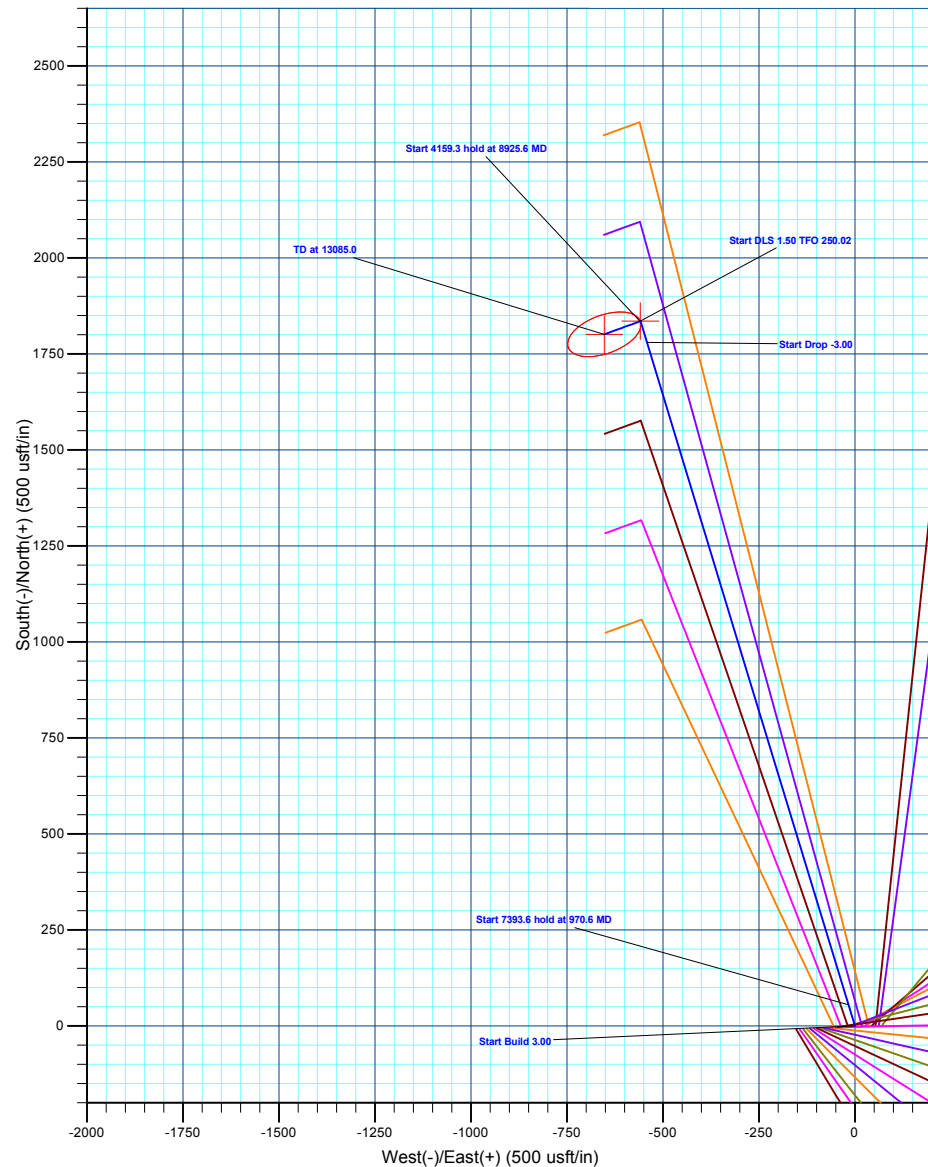
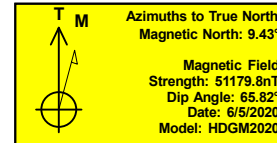
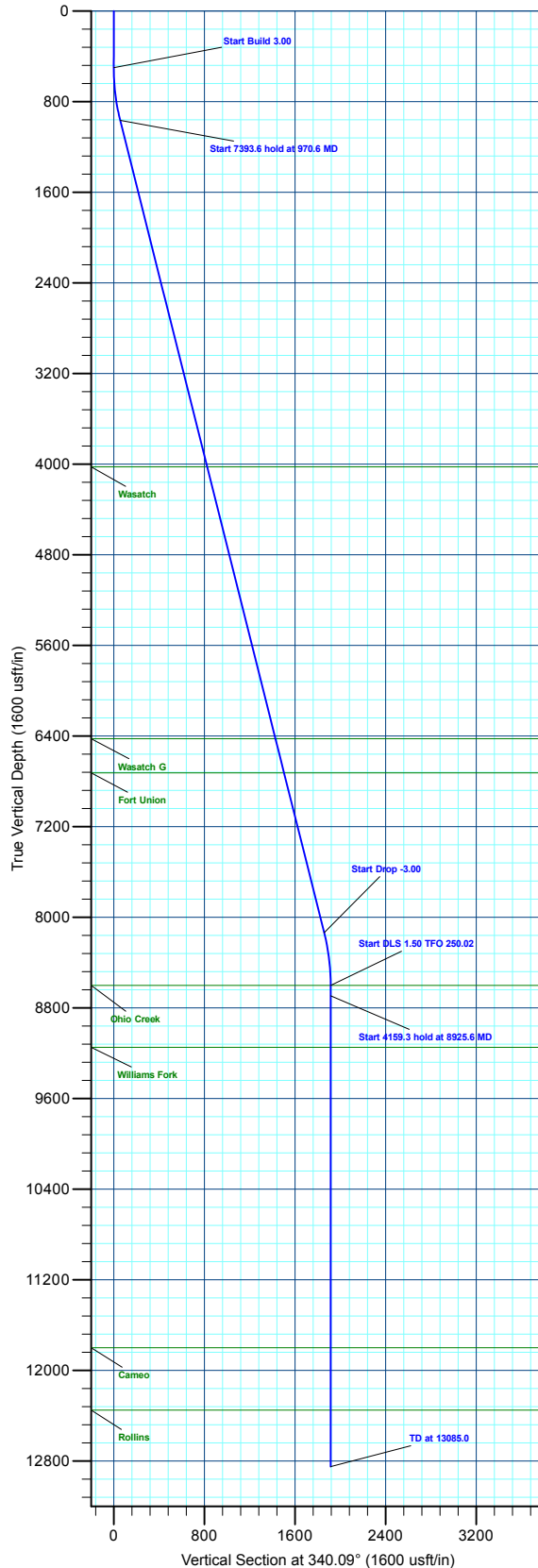
MD	Inc	Azi	TVD	+N/-S	+E/-W	Dleg	TFace	VSetc	Annotation
0.0	0.00	0.00	0.0	0.0	0.0	0.00	0.00	0.0	
500.0	0.00	0.00	500.0	0.0	0.0	0.00	0.00	0.0	Start Build 3.00
970.6	14.12	343.07	965.8	55.2	-16.8	3.00	343.07	57.6	Start 7393.6 hold at 970.6 MD
8364.2	14.12	343.07	8136.2	1780.4	-541.8	0.00	0.00	1858.5	Start Drop -3.00
8834.8	0.00	0.00	8602.0	1835.6	-558.6	3.00	180.00	1916.1	Start DLS 1.50 TFO 250.02
8925.6	1.36	250.02	8692.8	1835.2	-559.6	1.50	250.02	1916.1	Start 4159.3 hold at 8925.6 MD
13085.0	1.36	250.02	12851.0	1801.4	-652.6	0.00	0.00	1916.0	TD at 13085.0

DESIGN TARGET DETAILS

Name	TVD	+N/-S	+E/-W	Northing	Easting	Latitude	Longitude
12D-13 - OHCR	8602.0	1835.6	-558.6	14431214.08	2451447.03	39.703748	-108.116714
12D-13 - PBHL	12851.0	1801.4	-652.6	14431176.90	2451354.20	39.703655	-108.117048

WELL DETAILS: ELU O13 FED 12D-13 496

+N/-S	+E/-W	Ground Level : 8118.0	Northing	Easting	Latitude	Longitude
0.0	0.0		14429397.40	2452064.40	39.698711	-108.114730



Plan: Design #4 (ELU O13 FED 12D-13 496/Wellbore #1)

Created By: Will Jircik Date: 11:48, February 28 2023



## **Caerus Oil & Gas**

**Rio Blanco County, CO**

**ELU O13 496 Pad**

**ELU O13 FED 12D-13 496 - Slot 12D-13**

**Wellbore #1**

**Plan: Design #4**

## **KLX Well Planning Report**

**27 February, 2023**



<b>Database:</b>	EDM 5000.1 Single User Db	<b>Local Co-ordinate Reference:</b>	Well ELU O13 FED 12D-13 496 - Slot 12D-13
<b>Company:</b>	Caerus Oil & Gas	<b>TVD Reference:</b>	RKB @ 8143.0usft (25')
<b>Project:</b>	Rio Blanco County, CO	<b>MD Reference:</b>	RKB @ 8143.0usft (25')
<b>Site:</b>	ELU O13 496 Pad	<b>North Reference:</b>	True
<b>Well:</b>	ELU O13 FED 12D-13 496	<b>Survey Calculation Method:</b>	Minimum Curvature
<b>Wellbore:</b>	Wellbore #1		
<b>Design:</b>	Design #4		

<b>Project</b>	Rio Blanco County, CO		
<b>Map System:</b>	Universal Transverse Mercator (US Survey Fee	<b>System Datum:</b>	Mean Sea Level
<b>Geo Datum:</b>	NAD 1927 - Western US		
<b>Map Zone:</b>	Zone 12N (114 W to 108 W)		

Site	ELU O13 496 Pad				
Site Position:		Northing:	14,429,398.00 usft	Latitude:	39.698712
From:	Map	Easting:	2,452,071.40 usft	Longitude:	-108.114705
Position Uncertainty:	0.0 usft	Slot Radius:	13-3/16 "	Grid Convergence:	1.84 °

Well	ELU O13 FED 12D-13 496 - Slot 12D-13					
Well Position	+N/-S	-0.4 usft	Northing:	14,429,397.40 usft	Latitude:	39.698711
	+E/-W	-7.0 usft	Easting:	2,452,064.40 usft	Longitude:	-108.114730
Position Uncertainty		0.0 usft	Wellhead Elevation:		Ground Level:	8,118.0 usft

<b>Wellbore</b>	Wellbore #1				
<b>Magnetics</b>	<b>Model Name</b>	<b>Sample Date</b>	<b>Declination (°)</b>	<b>Dip Angle (°)</b>	<b>Field Strength (nT)</b>
	HDGM2020	6/5/2020	9.43	65.82	51,179.80000000

<b>Design</b>	Design #4			
<b>Audit Notes:</b>				
<b>Version:</b>	<b>Phase:</b>	PLAN	<b>Tie On Depth:</b>	0.0
<b>Vertical Section:</b>	<b>Depth From (TVD) (usft)</b>	<b>+N/-S (usft)</b>	<b>+E/-W (usft)</b>	<b>Direction (°)</b>
	0.0	0.0	0.0	340.09

Plan Sections										
Measured Depth (usft)	Inclination (°)	Azimuth (°)	Vertical Depth (usft)	+N/-S (usft)	+E/-W (usft)	Dogleg Rate (°/100usft)	Build Rate (°/100usft)	Turn Rate (°/100usft)	TFO (°)	Target
0.0	0.00	0.00	0.0	0.0	0.0	0.00	0.00	0.00	0.00	
500.0	0.00	0.00	500.0	0.0	0.0	0.00	0.00	0.00	0.00	
970.6	14.12	343.07	965.8	55.2	-16.8	3.00	3.00	0.00	343.07	
8,364.2	14.12	343.07	8,136.2	1,780.4	-541.8	0.00	0.00	0.00	0.00	
8,834.8	0.00	0.00	8,602.0	1,835.6	-558.6	3.00	-3.00	0.00	180.00	12D-13 - OHCR
8,925.6	1.36	250.02	8,692.8	1,835.2	-559.6	1.50	1.50	-121.06	250.02	
13,085.0	1.36	250.02	12,851.0	1,801.4	-652.6	0.00	0.00	0.00	0.00	12D-13 - PBHL

<b>Database:</b>	EDM 5000.1 Single User Db	<b>Local Co-ordinate Reference:</b>	Well ELU O13 FED 12D-13 496 - Slot 12D-13
<b>Company:</b>	Caerus Oil & Gas	<b>TVD Reference:</b>	RKB @ 8143.0usft (25')
<b>Project:</b>	Rio Blanco County, CO	<b>MD Reference:</b>	RKB @ 8143.0usft (25')
<b>Site:</b>	ELU O13 496 Pad	<b>North Reference:</b>	True
<b>Well:</b>	ELU O13 FED 12D-13 496	<b>Survey Calculation Method:</b>	Minimum Curvature
<b>Wellbore:</b>	Wellbore #1		
<b>Design:</b>	Design #4		

Planned Survey									
Measured Depth (usft)	Inclination (°)	Azimuth (°)	Vertical Depth (usft)	+N/-S (usft)	+E/-W (usft)	Vertical Section (usft)	Dogleg Rate (°/100usft)	Build Rate (°/100usft)	Turn Rate (°/100usft)
0.0	0.00	0.00	0.0	0.0	0.0	0.0	0.00	0.00	0.00
100.0	0.00	0.00	100.0	0.0	0.0	0.0	0.00	0.00	0.00
200.0	0.00	0.00	200.0	0.0	0.0	0.0	0.00	0.00	0.00
300.0	0.00	0.00	300.0	0.0	0.0	0.0	0.00	0.00	0.00
400.0	0.00	0.00	400.0	0.0	0.0	0.0	0.00	0.00	0.00
Start Build 3.00									
500.0	0.00	0.00	500.0	0.0	0.0	0.0	0.00	0.00	0.00
600.0	3.00	343.07	600.0	2.5	-0.8	2.6	3.00	3.00	0.00
700.0	6.00	343.07	699.6	10.0	-3.0	10.4	3.00	3.00	0.00
800.0	9.00	343.07	798.8	22.5	-6.8	23.5	3.00	3.00	0.00
900.0	12.00	343.07	897.1	39.9	-12.2	41.7	3.00	3.00	0.00
Start 7393.6 hold at 970.6 MD									
970.6	14.12	343.07	965.8	55.2	-16.8	57.6	3.00	3.00	0.00
1,000.0	14.12	343.07	994.4	62.0	-18.9	64.8	0.00	0.00	0.00
1,100.0	14.12	343.07	1,091.3	85.4	-26.0	89.1	0.00	0.00	0.00
1,200.0	14.12	343.07	1,188.3	108.7	-33.1	113.5	0.00	0.00	0.00
1,300.0	14.12	343.07	1,285.3	132.1	-40.2	137.8	0.00	0.00	0.00
1,400.0	14.12	343.07	1,382.3	155.4	-47.3	162.2	0.00	0.00	0.00
1,500.0	14.12	343.07	1,479.3	178.7	-54.4	186.6	0.00	0.00	0.00
1,600.0	14.12	343.07	1,576.2	202.1	-61.5	210.9	0.00	0.00	0.00
1,700.0	14.12	343.07	1,673.2	225.4	-68.6	235.3	0.00	0.00	0.00
1,800.0	14.12	343.07	1,770.2	248.7	-75.7	259.6	0.00	0.00	0.00
1,900.0	14.12	343.07	1,867.2	272.1	-82.8	284.0	0.00	0.00	0.00
2,000.0	14.12	343.07	1,964.2	295.4	-89.9	308.3	0.00	0.00	0.00
2,100.0	14.12	343.07	2,061.1	318.7	-97.0	332.7	0.00	0.00	0.00
2,200.0	14.12	343.07	2,158.1	342.1	-104.1	357.1	0.00	0.00	0.00
2,300.0	14.12	343.07	2,255.1	365.4	-111.2	381.4	0.00	0.00	0.00
2,400.0	14.12	343.07	2,352.1	388.7	-118.3	405.8	0.00	0.00	0.00
2,500.0	14.12	343.07	2,449.1	412.1	-125.4	430.1	0.00	0.00	0.00
2,600.0	14.12	343.07	2,546.0	435.4	-132.5	454.5	0.00	0.00	0.00
2,700.0	14.12	343.07	2,643.0	458.7	-139.6	478.8	0.00	0.00	0.00
2,800.0	14.12	343.07	2,740.0	482.1	-146.7	503.2	0.00	0.00	0.00
2,900.0	14.12	343.07	2,837.0	505.4	-153.8	527.6	0.00	0.00	0.00
3,000.0	14.12	343.07	2,934.0	528.7	-160.9	551.9	0.00	0.00	0.00
3,100.0	14.12	343.07	3,030.9	552.1	-168.0	576.3	0.00	0.00	0.00
3,200.0	14.12	343.07	3,127.9	575.4	-175.1	600.6	0.00	0.00	0.00
3,300.0	14.12	343.07	3,224.9	598.7	-182.2	625.0	0.00	0.00	0.00
3,400.0	14.12	343.07	3,321.9	622.1	-189.3	649.3	0.00	0.00	0.00
3,500.0	14.12	343.07	3,418.9	645.4	-196.4	673.7	0.00	0.00	0.00
3,600.0	14.12	343.07	3,515.8	668.7	-203.5	698.1	0.00	0.00	0.00
3,700.0	14.12	343.07	3,612.8	692.1	-210.6	722.4	0.00	0.00	0.00
3,800.0	14.12	343.07	3,709.8	715.4	-217.7	746.8	0.00	0.00	0.00
3,900.0	14.12	343.07	3,806.8	738.7	-224.8	771.1	0.00	0.00	0.00
4,000.0	14.12	343.07	3,903.8	762.1	-231.9	795.5	0.00	0.00	0.00
4,100.0	14.12	343.07	4,000.7	785.4	-239.0	819.9	0.00	0.00	0.00
Wasatch									
4,125.0	14.12	343.07	4,025.0	791.2	-240.8	825.9	0.00	0.00	0.00
4,200.0	14.12	343.07	4,097.7	808.7	-246.1	844.2	0.00	0.00	0.00
4,300.0	14.12	343.07	4,194.7	832.1	-253.2	868.6	0.00	0.00	0.00
4,400.0	14.12	343.07	4,291.7	855.4	-260.3	892.9	0.00	0.00	0.00
4,500.0	14.12	343.07	4,388.7	878.7	-267.4	917.3	0.00	0.00	0.00
4,600.0	14.12	343.07	4,485.6	902.1	-274.5	941.6	0.00	0.00	0.00
4,700.0	14.12	343.07	4,582.6	925.4	-281.6	966.0	0.00	0.00	0.00

<b>Database:</b>	EDM 5000.1 Single User Db	<b>Local Co-ordinate Reference:</b>	Well ELU O13 FED 12D-13 496 - Slot 12D-13
<b>Company:</b>	Caerus Oil & Gas	<b>TVD Reference:</b>	RKB @ 8143.0usft (25')
<b>Project:</b>	Rio Blanco County, CO	<b>MD Reference:</b>	RKB @ 8143.0usft (25')
<b>Site:</b>	ELU O13 496 Pad	<b>North Reference:</b>	True
<b>Well:</b>	ELU O13 FED 12D-13 496	<b>Survey Calculation Method:</b>	Minimum Curvature
<b>Wellbore:</b>	Wellbore #1		
<b>Design:</b>	Design #4		

Planned Survey									
Measured Depth (usft)	Inclination (°)	Azimuth (°)	Vertical Depth (usft)	+N/-S (usft)	+E/-W (usft)	Vertical Section (usft)	Dogleg Rate (°/100usft)	Build Rate (°/100usft)	Turn Rate (°/100usft)
4,800.0	14.12	343.07	4,679.6	948.7	-288.7	990.4	0.00	0.00	0.00
4,900.0	14.12	343.07	4,776.6	972.1	-295.8	1,014.7	0.00	0.00	0.00
5,000.0	14.12	343.07	4,873.6	995.4	-302.9	1,039.1	0.00	0.00	0.00
5,100.0	14.12	343.07	4,970.5	1,018.7	-310.0	1,063.4	0.00	0.00	0.00
5,200.0	14.12	343.07	5,067.5	1,042.1	-317.1	1,087.8	0.00	0.00	0.00
5,300.0	14.12	343.07	5,164.5	1,065.4	-324.2	1,112.1	0.00	0.00	0.00
5,400.0	14.12	343.07	5,261.5	1,088.7	-331.3	1,136.5	0.00	0.00	0.00
5,500.0	14.12	343.07	5,358.5	1,112.1	-338.4	1,160.9	0.00	0.00	0.00
5,600.0	14.12	343.07	5,455.4	1,135.4	-345.5	1,185.2	0.00	0.00	0.00
5,700.0	14.12	343.07	5,552.4	1,158.8	-352.6	1,209.6	0.00	0.00	0.00
5,800.0	14.12	343.07	5,649.4	1,182.1	-359.7	1,233.9	0.00	0.00	0.00
5,900.0	14.12	343.07	5,746.4	1,205.4	-366.8	1,258.3	0.00	0.00	0.00
6,000.0	14.12	343.07	5,843.4	1,228.8	-373.9	1,282.6	0.00	0.00	0.00
6,100.0	14.12	343.07	5,940.3	1,252.1	-381.0	1,307.0	0.00	0.00	0.00
6,200.0	14.12	343.07	6,037.3	1,275.4	-388.1	1,331.4	0.00	0.00	0.00
6,300.0	14.12	343.07	6,134.3	1,298.8	-395.2	1,355.7	0.00	0.00	0.00
6,400.0	14.12	343.07	6,231.3	1,322.1	-402.3	1,380.1	0.00	0.00	0.00
6,500.0	14.12	343.07	6,328.3	1,345.4	-409.4	1,404.4	0.00	0.00	0.00
<b>Wasatch G</b>									
6,599.8	14.12	343.07	6,425.0	1,368.7	-416.5	1,428.7	0.00	0.00	0.00
6,600.0	14.12	343.07	6,425.2	1,368.8	-416.5	1,428.8	0.00	0.00	0.00
6,700.0	14.12	343.07	6,522.2	1,392.1	-423.6	1,453.1	0.00	0.00	0.00
6,800.0	14.12	343.07	6,619.2	1,415.4	-430.7	1,477.5	0.00	0.00	0.00
6,900.0	14.12	343.07	6,716.2	1,438.8	-437.8	1,501.9	0.00	0.00	0.00
<b>Fort Union</b>									
6,909.1	14.12	343.07	6,725.0	1,440.9	-438.5	1,504.1	0.00	0.00	0.00
7,000.0	14.12	343.07	6,813.2	1,462.1	-444.9	1,526.2	0.00	0.00	0.00
7,100.0	14.12	343.07	6,910.1	1,485.4	-452.0	1,550.6	0.00	0.00	0.00
7,200.0	14.12	343.07	7,007.1	1,508.8	-459.1	1,574.9	0.00	0.00	0.00
7,300.0	14.12	343.07	7,104.1	1,532.1	-466.2	1,599.3	0.00	0.00	0.00
7,400.0	14.12	343.07	7,201.1	1,555.4	-473.3	1,623.6	0.00	0.00	0.00
7,500.0	14.12	343.07	7,298.1	1,578.8	-480.4	1,648.0	0.00	0.00	0.00
7,600.0	14.12	343.07	7,395.0	1,602.1	-487.5	1,672.4	0.00	0.00	0.00
7,700.0	14.12	343.07	7,492.0	1,625.4	-494.6	1,696.7	0.00	0.00	0.00
7,800.0	14.12	343.07	7,589.0	1,648.8	-501.7	1,721.1	0.00	0.00	0.00
7,900.0	14.12	343.07	7,686.0	1,672.1	-508.8	1,745.4	0.00	0.00	0.00
8,000.0	14.12	343.07	7,783.0	1,695.4	-515.9	1,769.8	0.00	0.00	0.00
8,100.0	14.12	343.07	7,879.9	1,718.8	-523.0	1,794.2	0.00	0.00	0.00
8,200.0	14.12	343.07	7,976.9	1,742.1	-530.1	1,818.5	0.00	0.00	0.00
8,300.0	14.12	343.07	8,073.9	1,765.4	-537.2	1,842.9	0.00	0.00	0.00
<b>Start Drop -3.00</b>									
8,364.2	14.12	343.07	8,136.2	1,780.4	-541.8	1,858.5	0.00	0.00	0.00
8,400.0	13.04	343.07	8,171.0	1,788.5	-544.2	1,866.9	3.00	-3.00	0.00
8,500.0	10.04	343.07	8,268.9	1,807.6	-550.1	1,886.9	3.00	-3.00	0.00
8,600.0	7.04	343.07	8,367.8	1,821.8	-554.4	1,901.7	3.00	-3.00	0.00
8,700.0	4.04	343.07	8,467.3	1,831.1	-557.2	1,911.4	3.00	-3.00	0.00
8,800.0	1.04	343.07	8,567.2	1,835.3	-558.5	1,915.8	3.00	-3.00	0.00
<b>Start DLS 1.50 TFO 250.02 - Ohio Creek</b>									
8,834.8	0.00	0.00	8,602.0	1,835.6	-558.6	1,916.1	3.00	-3.00	0.00
8,900.0	0.98	250.02	8,667.2	1,835.4	-559.1	1,916.1	1.50	1.50	0.00
<b>Start 4159.3 hold at 8925.6 MD</b>									
8,925.6	1.36	250.02	8,692.8	1,835.2	-559.6	1,916.1	1.50	1.50	0.00
9,000.0	1.36	250.02	8,767.2	1,834.6	-561.3	1,916.1	0.00	0.00	0.00
9,100.0	1.36	250.02	8,867.2	1,833.8	-563.5	1,916.1	0.00	0.00	0.00

<b>Database:</b>	EDM 5000.1 Single User Db	<b>Local Co-ordinate Reference:</b>	Well ELU O13 FED 12D-13 496 - Slot 12D-13
<b>Company:</b>	Caerus Oil & Gas	<b>TVD Reference:</b>	RKB @ 8143.0usft (25')
<b>Project:</b>	Rio Blanco County, CO	<b>MD Reference:</b>	RKB @ 8143.0usft (25')
<b>Site:</b>	ELU O13 496 Pad	<b>North Reference:</b>	True
<b>Well:</b>	ELU O13 FED 12D-13 496	<b>Survey Calculation Method:</b>	Minimum Curvature
<b>Wellbore:</b>	Wellbore #1		
<b>Design:</b>	Design #4		

Planned Survey									
Measured Depth (usft)	Inclination (°)	Azimuth (°)	Vertical Depth (usft)	+N/-S (usft)	+E/-W (usft)	Vertical Section (usft)	Dogleg Rate (°/100usft)	Build Rate (°/100usft)	Turn Rate (°/100usft)
9,200.0	1.36	250.02	8,967.1	1,833.0	-565.7	1,916.1	0.00	0.00	0.00
9,300.0	1.36	250.02	9,067.1	1,832.2	-568.0	1,916.1	0.00	0.00	0.00
<b>Williams Fork</b>									
9,380.9	1.36	250.02	9,148.0	1,831.5	-569.8	1,916.1	0.00	0.00	0.00
9,400.0	1.36	250.02	9,167.1	1,831.4	-570.2	1,916.1	0.00	0.00	0.00
9,500.0	1.36	250.02	9,267.0	1,830.6	-572.4	1,916.1	0.00	0.00	0.00
9,600.0	1.36	250.02	9,367.0	1,829.8	-574.7	1,916.1	0.00	0.00	0.00
9,700.0	1.36	250.02	9,467.0	1,828.9	-576.9	1,916.1	0.00	0.00	0.00
9,800.0	1.36	250.02	9,567.0	1,828.1	-579.1	1,916.1	0.00	0.00	0.00
9,900.0	1.36	250.02	9,666.9	1,827.3	-581.4	1,916.1	0.00	0.00	0.00
10,000.0	1.36	250.02	9,766.9	1,826.5	-583.6	1,916.1	0.00	0.00	0.00
10,100.0	1.36	250.02	9,866.9	1,825.7	-585.9	1,916.1	0.00	0.00	0.00
10,200.0	1.36	250.02	9,966.8	1,824.9	-588.1	1,916.1	0.00	0.00	0.00
10,300.0	1.36	250.02	10,066.8	1,824.1	-590.3	1,916.1	0.00	0.00	0.00
10,400.0	1.36	250.02	10,166.8	1,823.3	-592.6	1,916.1	0.00	0.00	0.00
10,500.0	1.36	250.02	10,266.8	1,822.4	-594.8	1,916.1	0.00	0.00	0.00
10,600.0	1.36	250.02	10,366.7	1,821.6	-597.0	1,916.1	0.00	0.00	0.00
10,700.0	1.36	250.02	10,466.7	1,820.8	-599.3	1,916.1	0.00	0.00	0.00
10,800.0	1.36	250.02	10,566.7	1,820.0	-601.5	1,916.1	0.00	0.00	0.00
10,900.0	1.36	250.02	10,666.6	1,819.2	-603.7	1,916.0	0.00	0.00	0.00
11,000.0	1.36	250.02	10,766.6	1,818.4	-606.0	1,916.0	0.00	0.00	0.00
11,100.0	1.36	250.02	10,866.6	1,817.6	-608.2	1,916.0	0.00	0.00	0.00
11,200.0	1.36	250.02	10,966.6	1,816.8	-610.4	1,916.0	0.00	0.00	0.00
11,300.0	1.36	250.02	11,066.5	1,815.9	-612.7	1,916.0	0.00	0.00	0.00
11,400.0	1.36	250.02	11,166.5	1,815.1	-614.9	1,916.0	0.00	0.00	0.00
11,500.0	1.36	250.02	11,266.5	1,814.3	-617.1	1,916.0	0.00	0.00	0.00
11,600.0	1.36	250.02	11,366.4	1,813.5	-619.4	1,916.0	0.00	0.00	0.00
11,700.0	1.36	250.02	11,466.4	1,812.7	-621.6	1,916.0	0.00	0.00	0.00
11,800.0	1.36	250.02	11,566.4	1,811.9	-623.9	1,916.0	0.00	0.00	0.00
11,900.0	1.36	250.02	11,666.4	1,811.1	-626.1	1,916.0	0.00	0.00	0.00
12,000.0	1.36	250.02	11,766.3	1,810.2	-628.3	1,916.0	0.00	0.00	0.00
<b>Cameo</b>									
12,034.7	1.36	250.02	11,801.0	1,810.0	-629.1	1,916.0	0.00	0.00	0.00
12,100.0	1.36	250.02	11,866.3	1,809.4	-630.6	1,916.0	0.00	0.00	0.00
12,200.0	1.36	250.02	11,966.3	1,808.6	-632.8	1,916.0	0.00	0.00	0.00
12,300.0	1.36	250.02	12,066.2	1,807.8	-635.0	1,916.0	0.00	0.00	0.00
12,400.0	1.36	250.02	12,166.2	1,807.0	-637.3	1,916.0	0.00	0.00	0.00
12,500.0	1.36	250.02	12,266.2	1,806.2	-639.5	1,916.0	0.00	0.00	0.00
<b>Rollins</b>									
12,584.8	1.36	250.02	12,351.0	1,805.5	-641.4	1,916.0	0.00	0.00	0.00
12,600.0	1.36	250.02	12,366.2	1,805.4	-641.7	1,916.0	0.00	0.00	0.00
12,700.0	1.36	250.02	12,466.1	1,804.6	-644.0	1,916.0	0.00	0.00	0.00
12,800.0	1.36	250.02	12,566.1	1,803.7	-646.2	1,916.0	0.00	0.00	0.00
12,900.0	1.36	250.02	12,666.1	1,802.9	-648.4	1,916.0	0.00	0.00	0.00
13,000.0	1.36	250.02	12,766.0	1,802.1	-650.7	1,916.0	0.00	0.00	0.00
<b>TD at 13085.0</b>									
13,085.0	1.36	250.02	12,851.0	1,801.4	-652.6	1,916.0	0.00	0.00	0.00

<b>Database:</b>	EDM 5000.1 Single User Db	<b>Local Co-ordinate Reference:</b>	Well ELU O13 FED 12D-13 496 - Slot 12D-13
<b>Company:</b>	Caerus Oil & Gas	<b>TVD Reference:</b>	RKB @ 8143.0usft (25')
<b>Project:</b>	Rio Blanco County, CO	<b>MD Reference:</b>	RKB @ 8143.0usft (25')
<b>Site:</b>	ELU O13 496 Pad	<b>North Reference:</b>	True
<b>Well:</b>	ELU O13 FED 12D-13 496	<b>Survey Calculation Method:</b>	Minimum Curvature
<b>Wellbore:</b>	Wellbore #1		
<b>Design:</b>	Design #4		

#### Design Targets

##### Target Name

- hit/miss target	Dip Angle	Dip Dir.	TVD	+N/-S	+E/-W	Northing	Easting	Latitude	Longitude
- Shape	(°)	(°)	(usft)	(usft)	(usft)	(usft)	(usft)		
12D-13 - OHCR	0.00	0.00	8,602.0	1,835.6	-558.6	14,431,214.08	2,451,447.03	39.703748	-108.116714
- plan hits target center									
- Point									
12D-13 - PBHL	0.00	0.00	12,851.0	1,801.4	-652.6	14,431,176.90	2,451,354.20	39.703655	-108.117048
- plan hits target center									
- Ellipse (radii L100.0 W50.0 on 250.00 azi)									

#### Formations

Measured Depth	Vertical Depth	Name	Lithology	Dip	Dip Direction
(usft)	(usft)			(°)	(°)
4,125.0	4,025.0	Wasatch			
6,599.8	6,425.0	Wasatch G			
6,909.1	6,725.0	Fort Union			
8,834.8	8,602.0	Ohio Creek			
9,380.9	9,148.0	Williams Fork			
12,034.7	11,801.0	Cameo			
12,584.8	12,351.0	Rollins			

#### Plan Annotations

Measured Depth	Vertical Depth	Local Coordinates		Comment
(usft)	(usft)	+N/-S	+E/-W	
(usft)	(usft)	(usft)	(usft)	
500.0	500.0	0.0	0.0	Start Build 3.00
970.6	965.8	55.2	-16.8	Start 7393.6 hold at 970.6 MD
8,364.2	8,136.2	1,780.4	-541.8	Start Drop -3.00
8,834.8	8,602.0	1,835.6	-558.6	Start DLS 1.50 TFO 250.02
8,925.6	8,692.8	1,835.2	-559.6	Start 4159.3 hold at 8925.6 MD
13,085.0	12,851.0	1,801.4	-652.6	TD at 13085.0