

Project: Rio Blanco County, CO
 Site: ELU O13 496 Pad
 Well: ELU O13 FED 23C-13 496
 Wellbore: Wellbore #1
 Design: Design #4
 Latitude: 39.698712
 Longitude: -108.114698
 Ground Level: 8118.0
 RKB @ 8143.0usft (25')

PROJECT DETAILS: Rio Blanco County, CO

Geodetic System: Universal Transverse Mercator (US Survey Feet)
 Datum: NAD 1927 - Western US
 Ellipsoid: Clarke 1886
 Zone: Zone 12N (114 W to 108 W)
 System Datum: Mean Sea Level

REFERENCE INFORMATION

Vertical (TVD) Reference: RKB @ 8143.0usft (25')
 Section (VS) Reference: Slot - 23C-13(0.0N, 0.0E)
 Measured Depth Reference: RKB @ 8143.0usft (25')
 Calculation Method: Minimum Curvature

FORMATION TOP DETAILS

TVDPath	MDPath	Formation
4062.0	4200.2	Wasatch
6462.0	6703.9	Wasatch G
6762.0	7016.9	Fort Union
8679.0	9000.9	Ohio Creek
9215.0	9537.1	Williams Fork
11803.0	12125.8	Cameo
12353.0	12676.0	Rollins

SECTION DETAILS

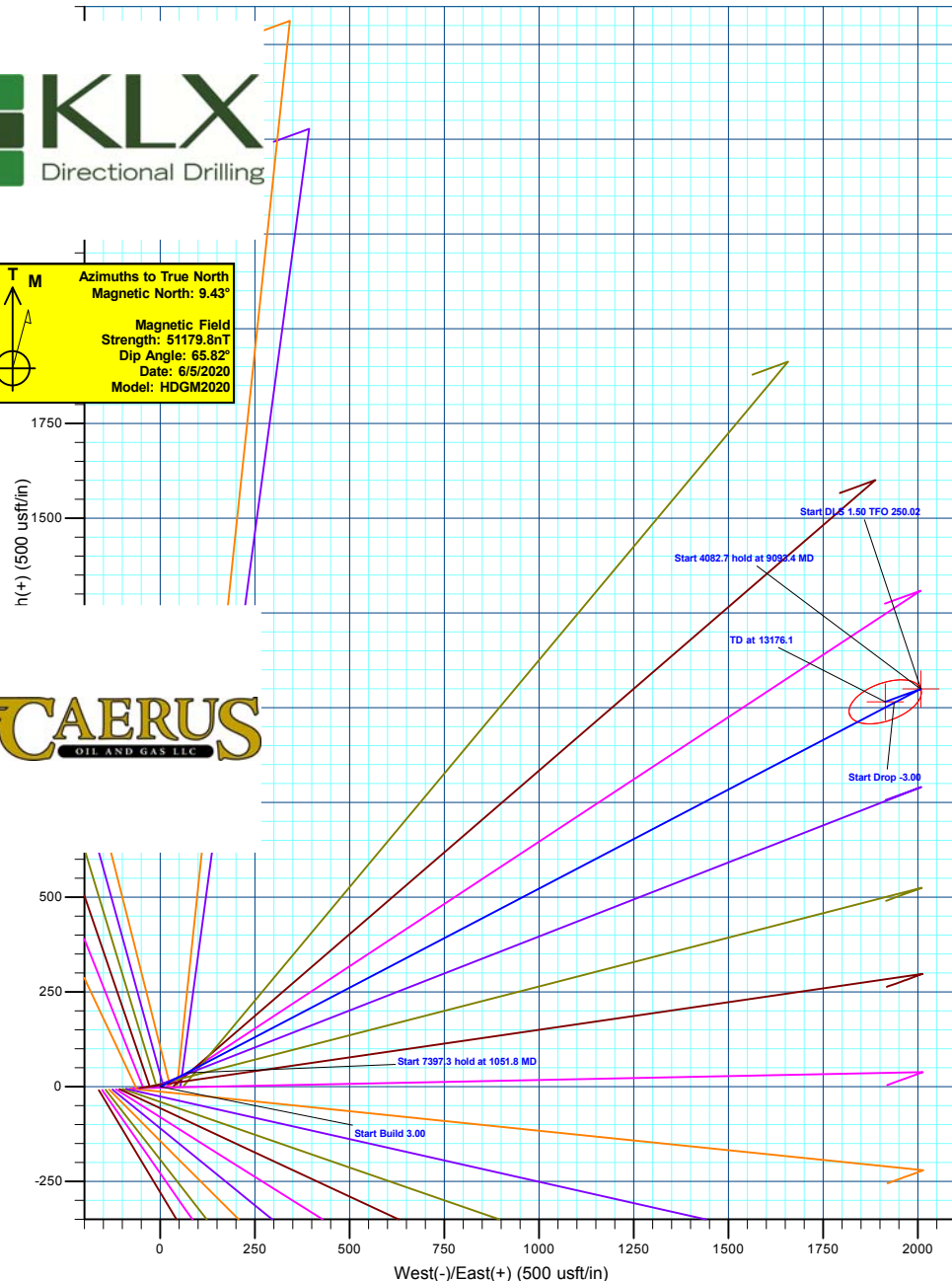
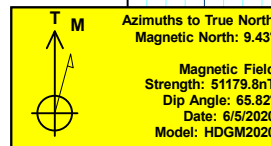
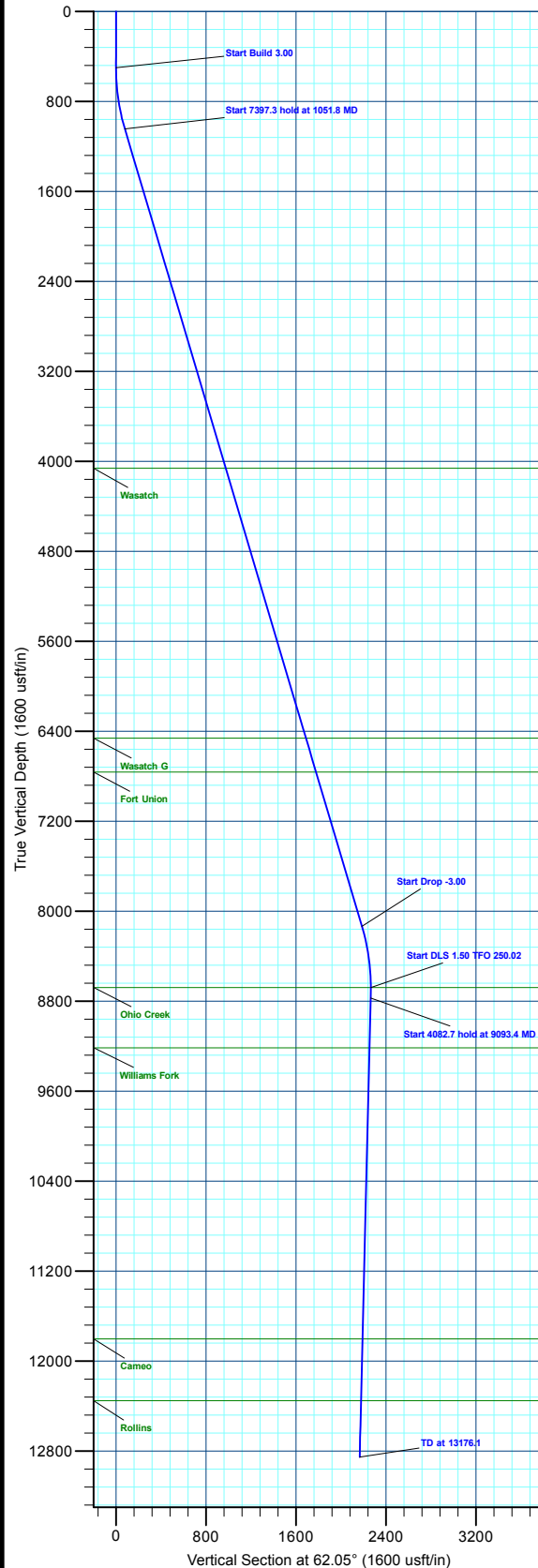
MD	Inc	Azi	TVD	+N/-S	+E/-W	Dleg	TFace	VSeet	Annotation
0.0	0.00	0.00	0.0	0.0	0.0	0.00	0.00	0.0	
500.0	0.00	0.00	500.0	0.0	0.0	0.00	0.00	0.0	Start Build 3.00
1051.8	16.55	62.40	1044.2	36.7	70.2	3.00	62.40	79.2	Start 7397.3 hold at 1051.8 MD
8449.1	16.55	62.40	8134.8	1013.2	1938.0	0.00	0.00	2186.8	Start Drop -3.00
9000.9	0.00	0.00	8679.0	1049.9	2008.2	3.00	180.00	2266.0	Start DLS 1.50 TFO 250.02
9093.4	1.39	250.02	8771.5	1049.5	2007.1	1.50	250.02	2264.9	Start 4082.7 hold at 9093.4 MD
13176.1	1.39	250.02	12853.0	1015.7	1914.2	0.00	0.00	2167.0	TD at 13176.1

DESIGN TARGET DETAILS

Name	TVD	+N/-S	+E/-W	Northing	Easting	Latitude	Longitude
23C-13 - OHCR	8679.0	1049.9	2008.2	14430512.18	2454046.63	39.701593	-108.107564
23C-13 - PBHL	12853.0	1015.7	1914.2	14430475.00	2453953.80	39.701500	-108.107898

WELL DETAILS: ELU O13 FED 23C-13 496

+N/-S	+E/-W	Ground Level : 8118.0	Northing	Easting	Latitude	Longitude	23C-13
0.0	0.0		14429398.20	2452073.30	39.698712	-108.114698	



Plan: Design #4 (ELU O13 FED 23C-13 496/Wellbore #1)

Created By: Will Jircik Date: 12:36, February 28 2023



Caerus Oil & Gas

Rio Blanco County, CO

ELU O13 496 Pad

ELU O13 FED 23C-13 496 - Slot 23C-13

Wellbore #1

Plan: Design #4

KLX Well Planning Report

27 February, 2023



Database:	EDM 5000.1 Single User Db	Local Co-ordinate Reference:	Well ELU O13 FED 23C-13 496 - Slot 23C-13
Company:	Caerus Oil & Gas	TVD Reference:	RKB @ 8143.0usft (25')
Project:	Rio Blanco County, CO	MD Reference:	RKB @ 8143.0usft (25')
Site:	ELU O13 496 Pad	North Reference:	True
Well:	ELU O13 FED 23C-13 496	Survey Calculation Method:	Minimum Curvature
Wellbore:	Wellbore #1		
Design:	Design #4		

Project	Rio Blanco County, CO		
Map System:	Universal Transverse Mercator (US Survey Fee	System Datum:	Mean Sea Level
Geo Datum:	NAD 1927 - Western US		
Map Zone:	Zone 12N (114 W to 108 W)		

Site	ELU O13 496 Pad				
Site Position:		Northing:	14,429,398.00 usft	Latitude:	39.698712
From:	Map	Easting:	2,452,071.40 usft	Longitude:	-108.114705
Position Uncertainty:	0.0 usft	Slot Radius:	13-3/16 "	Grid Convergence:	1.84 °

Well	ELU O13 FED 23C-13 496 - Slot 23C-13					
Well Position	+N/-S	0.1 usft	Northing:	14,429,398.20 usft	Latitude:	39.698712
	+E/-W	1.9 usft	Easting:	2,452,073.30 usft	Longitude:	-108.114698
Position Uncertainty		0.0 usft	Wellhead Elevation:		Ground Level:	8,118.0 usft

Wellbore	Wellbore #1				
Magnetics	Model Name	Sample Date	Declination (°)	Dip Angle (°)	Field Strength (nT)
	HDGM2020	6/5/2020	9.43	65.82	51,179.80000000

Design	Design #4			
Audit Notes:				
Version:	Phase:	PLAN	Tie On Depth:	0.0
Vertical Section:	Depth From (TVD) (usft)	+N/-S (usft)	+E/-W (usft)	Direction (°)
	0.0	0.0	0.0	62.05

Plan Sections										
Measured Depth (usft)	Inclination (°)	Azimuth (°)	Vertical Depth (usft)	+N/-S (usft)	+E/-W (usft)	Dogleg Rate (°/100usft)	Build Rate (°/100usft)	Turn Rate (°/100usft)	TFO (°)	Target
0.0	0.00	0.00	0.0	0.0	0.0	0.00	0.00	0.00	0.00	
500.0	0.00	0.00	500.0	0.0	0.0	0.00	0.00	0.00	0.00	
1,051.8	16.55	62.40	1,044.2	36.7	70.2	3.00	3.00	0.00	62.40	
8,449.1	16.55	62.40	8,134.8	1,013.2	1,938.0	0.00	0.00	0.00	0.00	
9,000.9	0.00	0.00	8,679.0	1,049.9	2,008.2	3.00	-3.00	0.00	180.00	23C-13 - OHCR
9,093.4	1.39	250.02	8,771.5	1,049.5	2,007.1	1.50	1.50	-118.88	250.02	
13,176.1	1.39	250.02	12,853.0	1,015.7	1,914.2	0.00	0.00	0.00	0.00	23C-13 - PBHL

Database:	EDM 5000.1 Single User Db	Local Co-ordinate Reference:	Well ELU O13 FED 23C-13 496 - Slot 23C-13
Company:	Caerus Oil & Gas	TVD Reference:	RKB @ 8143.0usft (25')
Project:	Rio Blanco County, CO	MD Reference:	RKB @ 8143.0usft (25')
Site:	ELU O13 496 Pad	North Reference:	True
Well:	ELU O13 FED 23C-13 496	Survey Calculation Method:	Minimum Curvature
Wellbore:	Wellbore #1		
Design:	Design #4		

Planned Survey									
Measured Depth (usft)	Inclination (°)	Azimuth (°)	Vertical Depth (usft)	+N/-S (usft)	+E/-W (usft)	Vertical Section (usft)	Dogleg Rate (°/100usft)	Build Rate (°/100usft)	Turn Rate (°/100usft)
0.0	0.00	0.00	0.0	0.0	0.0	0.0	0.00	0.00	0.00
100.0	0.00	0.00	100.0	0.0	0.0	0.0	0.00	0.00	0.00
200.0	0.00	0.00	200.0	0.0	0.0	0.0	0.00	0.00	0.00
300.0	0.00	0.00	300.0	0.0	0.0	0.0	0.00	0.00	0.00
400.0	0.00	0.00	400.0	0.0	0.0	0.0	0.00	0.00	0.00
Start Build 3.00									
500.0	0.00	0.00	500.0	0.0	0.0	0.0	0.00	0.00	0.00
600.0	3.00	62.40	600.0	1.2	2.3	2.6	3.00	3.00	0.00
700.0	6.00	62.40	699.6	4.8	9.3	10.5	3.00	3.00	0.00
800.0	9.00	62.40	798.8	10.9	20.8	23.5	3.00	3.00	0.00
900.0	12.00	62.40	897.1	19.3	37.0	41.7	3.00	3.00	0.00
1,000.0	15.00	62.40	994.3	30.2	57.7	65.1	3.00	3.00	0.00
Start 7397.3 hold at 1051.8 MD									
1,051.8	16.55	62.40	1,044.2	36.7	70.2	79.2	3.00	3.00	0.00
1,100.0	16.55	62.40	1,090.4	43.0	82.3	92.9	0.00	0.00	0.00
1,200.0	16.55	62.40	1,186.2	56.2	107.6	121.4	0.00	0.00	0.00
1,300.0	16.55	62.40	1,282.1	69.4	132.8	149.9	0.00	0.00	0.00
1,400.0	16.55	62.40	1,377.9	82.6	158.1	178.4	0.00	0.00	0.00
1,500.0	16.55	62.40	1,473.8	95.8	183.3	206.9	0.00	0.00	0.00
1,600.0	16.55	62.40	1,569.6	109.0	208.6	235.4	0.00	0.00	0.00
1,700.0	16.55	62.40	1,665.5	122.2	233.8	263.8	0.00	0.00	0.00
1,800.0	16.55	62.40	1,761.3	135.4	259.1	292.3	0.00	0.00	0.00
1,900.0	16.55	62.40	1,857.2	148.7	284.3	320.8	0.00	0.00	0.00
2,000.0	16.55	62.40	1,953.1	161.9	309.6	349.3	0.00	0.00	0.00
2,100.0	16.55	62.40	2,048.9	175.1	334.8	377.8	0.00	0.00	0.00
2,200.0	16.55	62.40	2,144.8	188.3	360.1	406.3	0.00	0.00	0.00
2,300.0	16.55	62.40	2,240.6	201.5	385.3	434.8	0.00	0.00	0.00
2,400.0	16.55	62.40	2,336.5	214.7	410.6	463.3	0.00	0.00	0.00
2,500.0	16.55	62.40	2,432.3	227.9	435.8	491.8	0.00	0.00	0.00
2,600.0	16.55	62.40	2,528.2	241.1	461.1	520.3	0.00	0.00	0.00
2,700.0	16.55	62.40	2,624.0	254.3	486.3	548.8	0.00	0.00	0.00
2,800.0	16.55	62.40	2,719.9	267.5	511.6	577.3	0.00	0.00	0.00
2,900.0	16.55	62.40	2,815.7	280.7	536.8	605.8	0.00	0.00	0.00
3,000.0	16.55	62.40	2,911.6	293.9	562.1	634.3	0.00	0.00	0.00
3,100.0	16.55	62.40	3,007.5	307.1	587.3	662.7	0.00	0.00	0.00
3,200.0	16.55	62.40	3,103.3	320.3	612.6	691.2	0.00	0.00	0.00
3,300.0	16.55	62.40	3,199.2	333.5	637.8	719.7	0.00	0.00	0.00
3,400.0	16.55	62.40	3,295.0	346.7	663.1	748.2	0.00	0.00	0.00
3,500.0	16.55	62.40	3,390.9	359.9	688.3	776.7	0.00	0.00	0.00
3,600.0	16.55	62.40	3,486.7	373.1	713.6	805.2	0.00	0.00	0.00
3,700.0	16.55	62.40	3,582.6	386.3	738.8	833.7	0.00	0.00	0.00
3,800.0	16.55	62.40	3,678.4	399.5	764.1	862.2	0.00	0.00	0.00
3,900.0	16.55	62.40	3,774.3	412.7	789.3	890.7	0.00	0.00	0.00
4,000.0	16.55	62.40	3,870.1	425.9	814.6	919.2	0.00	0.00	0.00
4,100.0	16.55	62.40	3,966.0	439.1	839.8	947.7	0.00	0.00	0.00
4,200.0	16.55	62.40	4,061.9	452.3	865.1	976.2	0.00	0.00	0.00
Wasatch									
4,200.2	16.55	62.40	4,062.0	452.3	865.1	976.2	0.00	0.00	0.00
4,300.0	16.55	62.40	4,157.7	465.5	890.3	1,004.7	0.00	0.00	0.00
4,400.0	16.55	62.40	4,253.6	478.7	915.6	1,033.1	0.00	0.00	0.00
4,500.0	16.55	62.40	4,349.4	491.9	940.8	1,061.6	0.00	0.00	0.00
4,600.0	16.55	62.40	4,445.3	505.1	966.1	1,090.1	0.00	0.00	0.00
4,700.0	16.55	62.40	4,541.1	518.3	991.3	1,118.6	0.00	0.00	0.00

Database:	EDM 5000.1 Single User Db	Local Co-ordinate Reference:	Well ELU O13 FED 23C-13 496 - Slot 23C-13
Company:	Caerus Oil & Gas	TVD Reference:	RKB @ 8143.0usft (25')
Project:	Rio Blanco County, CO	MD Reference:	RKB @ 8143.0usft (25')
Site:	ELU O13 496 Pad	North Reference:	True
Well:	ELU O13 FED 23C-13 496	Survey Calculation Method:	Minimum Curvature
Wellbore:	Wellbore #1		
Design:	Design #4		

Planned Survey									
Measured Depth (usft)	Inclination (°)	Azimuth (°)	Vertical Depth (usft)	+N/-S (usft)	+E/-W (usft)	Vertical Section (usft)	Dogleg Rate (°/100usft)	Build Rate (°/100usft)	Turn Rate (°/100usft)
4,800.0	16.55	62.40	4,637.0	531.5	1,016.6	1,147.1	0.00	0.00	0.00
4,900.0	16.55	62.40	4,732.8	544.7	1,041.8	1,175.6	0.00	0.00	0.00
5,000.0	16.55	62.40	4,828.7	557.9	1,067.1	1,204.1	0.00	0.00	0.00
5,100.0	16.55	62.40	4,924.5	571.1	1,092.3	1,232.6	0.00	0.00	0.00
5,200.0	16.55	62.40	5,020.4	584.3	1,117.6	1,261.1	0.00	0.00	0.00
5,300.0	16.55	62.40	5,116.3	597.5	1,142.8	1,289.6	0.00	0.00	0.00
5,400.0	16.55	62.40	5,212.1	610.7	1,168.1	1,318.1	0.00	0.00	0.00
5,500.0	16.55	62.40	5,308.0	623.9	1,193.3	1,346.6	0.00	0.00	0.00
5,600.0	16.55	62.40	5,403.8	637.1	1,218.6	1,375.1	0.00	0.00	0.00
5,700.0	16.55	62.40	5,499.7	650.3	1,243.8	1,403.6	0.00	0.00	0.00
5,800.0	16.55	62.40	5,595.5	663.5	1,269.1	1,432.0	0.00	0.00	0.00
5,900.0	16.55	62.40	5,691.4	676.7	1,294.3	1,460.5	0.00	0.00	0.00
6,000.0	16.55	62.40	5,787.2	689.9	1,319.6	1,489.0	0.00	0.00	0.00
6,100.0	16.55	62.40	5,883.1	703.1	1,344.8	1,517.5	0.00	0.00	0.00
6,200.0	16.55	62.40	5,979.0	716.3	1,370.1	1,546.0	0.00	0.00	0.00
6,300.0	16.55	62.40	6,074.8	729.5	1,395.3	1,574.5	0.00	0.00	0.00
6,400.0	16.55	62.40	6,170.7	742.7	1,420.6	1,603.0	0.00	0.00	0.00
6,500.0	16.55	62.40	6,266.5	755.9	1,445.8	1,631.5	0.00	0.00	0.00
6,600.0	16.55	62.40	6,362.4	769.1	1,471.1	1,660.0	0.00	0.00	0.00
6,700.0	16.55	62.40	6,458.2	782.3	1,496.3	1,688.5	0.00	0.00	0.00
Wasatch G									
6,703.9	16.55	62.40	6,462.0	782.8	1,497.3	1,689.6	0.00	0.00	0.00
6,800.0	16.55	62.40	6,554.1	795.5	1,521.6	1,717.0	0.00	0.00	0.00
6,900.0	16.55	62.40	6,649.9	808.7	1,546.8	1,745.5	0.00	0.00	0.00
7,000.0	16.55	62.40	6,745.8	821.9	1,572.1	1,774.0	0.00	0.00	0.00
Fort Union									
7,016.9	16.55	62.40	6,762.0	824.2	1,576.4	1,778.8	0.00	0.00	0.00
7,100.0	16.55	62.40	6,841.6	835.1	1,597.3	1,802.4	0.00	0.00	0.00
7,200.0	16.55	62.40	6,937.5	848.3	1,622.6	1,830.9	0.00	0.00	0.00
7,300.0	16.55	62.40	7,033.4	861.5	1,647.8	1,859.4	0.00	0.00	0.00
7,400.0	16.55	62.40	7,129.2	874.7	1,673.1	1,887.9	0.00	0.00	0.00
7,500.0	16.55	62.40	7,225.1	887.9	1,698.3	1,916.4	0.00	0.00	0.00
7,600.0	16.55	62.40	7,320.9	901.1	1,723.6	1,944.9	0.00	0.00	0.00
7,700.0	16.55	62.40	7,416.8	914.3	1,748.8	1,973.4	0.00	0.00	0.00
7,800.0	16.55	62.40	7,512.6	927.5	1,774.1	2,001.9	0.00	0.00	0.00
7,900.0	16.55	62.40	7,608.5	940.7	1,799.3	2,030.4	0.00	0.00	0.00
8,000.0	16.55	62.40	7,704.3	953.9	1,824.6	2,058.9	0.00	0.00	0.00
8,100.0	16.55	62.40	7,800.2	967.1	1,849.8	2,087.4	0.00	0.00	0.00
8,200.0	16.55	62.40	7,896.0	980.3	1,875.1	2,115.9	0.00	0.00	0.00
8,300.0	16.55	62.40	7,991.9	993.5	1,900.3	2,144.4	0.00	0.00	0.00
8,400.0	16.55	62.40	8,087.8	1,006.7	1,925.6	2,172.9	0.00	0.00	0.00
Start Drop -3.00									
8,449.1	16.55	62.40	8,134.8	1,013.2	1,938.0	2,186.8	0.00	0.00	0.00
8,500.0	15.03	62.40	8,183.8	1,019.6	1,950.3	2,200.7	3.00	-3.00	0.00
8,600.0	12.03	62.40	8,281.0	1,030.5	1,971.0	2,224.1	3.00	-3.00	0.00
8,700.0	9.03	62.40	8,379.3	1,038.9	1,987.2	2,242.3	3.00	-3.00	0.00
8,800.0	6.03	62.40	8,478.4	1,045.0	1,998.8	2,255.4	3.00	-3.00	0.00
8,900.0	3.03	62.40	8,578.1	1,048.7	2,005.8	2,263.3	3.00	-3.00	0.00
Start DLS 1.50 TFO 250.02 - Ohio Creek									
9,000.9	0.00	0.00	8,679.0	1,049.9	2,008.2	2,266.0	3.00	-3.00	0.00
Start 4082.7 hold at 9093.4 MD									
9,093.4	1.39	250.02	8,771.5	1,049.5	2,007.1	2,264.9	1.50	1.50	0.00
9,100.0	1.39	250.02	8,778.1	1,049.5	2,007.0	2,264.7	0.00	0.00	0.00
9,200.0	1.39	250.02	8,878.0	1,048.6	2,004.7	2,262.3	0.00	0.00	0.00

Database:	EDM 5000.1 Single User Db	Local Co-ordinate Reference:	Well ELU O13 FED 23C-13 496 - Slot 23C-13
Company:	Caerus Oil & Gas	TVD Reference:	RKB @ 8143.0usft (25')
Project:	Rio Blanco County, CO	MD Reference:	RKB @ 8143.0usft (25')
Site:	ELU O13 496 Pad	North Reference:	True
Well:	ELU O13 FED 23C-13 496	Survey Calculation Method:	Minimum Curvature
Wellbore:	Wellbore #1		
Design:	Design #4		

Planned Survey									
Measured Depth (usft)	Inclination (°)	Azimuth (°)	Vertical Depth (usft)	+N/-S (usft)	+E/-W (usft)	Vertical Section (usft)	Dogleg Rate (°/100usft)	Build Rate (°/100usft)	Turn Rate (°/100usft)
9,300.0	1.39	250.02	8,978.0	1,047.8	2,002.4	2,259.9	0.00	0.00	0.00
9,400.0	1.39	250.02	9,078.0	1,047.0	2,000.1	2,257.5	0.00	0.00	0.00
9,500.0	1.39	250.02	9,177.9	1,046.2	1,997.8	2,255.1	0.00	0.00	0.00
Williams Fork									
9,537.1	1.39	250.02	9,215.0	1,045.8	1,997.0	2,254.3	0.00	0.00	0.00
9,600.0	1.39	250.02	9,277.9	1,045.3	1,995.6	2,252.7	0.00	0.00	0.00
9,700.0	1.39	250.02	9,377.9	1,044.5	1,993.3	2,250.3	0.00	0.00	0.00
9,800.0	1.39	250.02	9,477.9	1,043.7	1,991.0	2,248.0	0.00	0.00	0.00
9,900.0	1.39	250.02	9,577.8	1,042.8	1,988.7	2,245.6	0.00	0.00	0.00
10,000.0	1.39	250.02	9,677.8	1,042.0	1,986.5	2,243.2	0.00	0.00	0.00
10,100.0	1.39	250.02	9,777.8	1,041.2	1,984.2	2,240.8	0.00	0.00	0.00
10,200.0	1.39	250.02	9,877.7	1,040.4	1,981.9	2,238.4	0.00	0.00	0.00
10,300.0	1.39	250.02	9,977.7	1,039.5	1,979.6	2,236.0	0.00	0.00	0.00
10,400.0	1.39	250.02	10,077.7	1,038.7	1,977.4	2,233.6	0.00	0.00	0.00
10,500.0	1.39	250.02	10,177.7	1,037.9	1,975.1	2,231.2	0.00	0.00	0.00
10,600.0	1.39	250.02	10,277.6	1,037.1	1,972.8	2,228.8	0.00	0.00	0.00
10,700.0	1.39	250.02	10,377.6	1,036.2	1,970.5	2,226.4	0.00	0.00	0.00
10,800.0	1.39	250.02	10,477.6	1,035.4	1,968.3	2,224.0	0.00	0.00	0.00
10,900.0	1.39	250.02	10,577.5	1,034.6	1,966.0	2,221.6	0.00	0.00	0.00
11,000.0	1.39	250.02	10,677.5	1,033.7	1,963.7	2,219.2	0.00	0.00	0.00
11,100.0	1.39	250.02	10,777.5	1,032.9	1,961.4	2,216.8	0.00	0.00	0.00
11,200.0	1.39	250.02	10,877.4	1,032.1	1,959.2	2,214.4	0.00	0.00	0.00
11,300.0	1.39	250.02	10,977.4	1,031.3	1,956.9	2,212.0	0.00	0.00	0.00
11,400.0	1.39	250.02	11,077.4	1,030.4	1,954.6	2,209.6	0.00	0.00	0.00
11,500.0	1.39	250.02	11,177.4	1,029.6	1,952.3	2,207.2	0.00	0.00	0.00
11,600.0	1.39	250.02	11,277.3	1,028.8	1,950.1	2,204.8	0.00	0.00	0.00
11,700.0	1.39	250.02	11,377.3	1,027.9	1,947.8	2,202.4	0.00	0.00	0.00
11,800.0	1.39	250.02	11,477.3	1,027.1	1,945.5	2,200.0	0.00	0.00	0.00
11,900.0	1.39	250.02	11,577.2	1,026.3	1,943.2	2,197.6	0.00	0.00	0.00
12,000.0	1.39	250.02	11,677.2	1,025.5	1,940.9	2,195.2	0.00	0.00	0.00
12,100.0	1.39	250.02	11,777.2	1,024.6	1,938.7	2,192.8	0.00	0.00	0.00
Cameo									
12,125.8	1.39	250.02	11,803.0	1,024.4	1,938.1	2,192.2	0.00	0.00	0.00
12,200.0	1.39	250.02	11,877.2	1,023.8	1,936.4	2,190.4	0.00	0.00	0.00
12,300.0	1.39	250.02	11,977.1	1,023.0	1,934.1	2,188.0	0.00	0.00	0.00
12,400.0	1.39	250.02	12,077.1	1,022.2	1,931.8	2,185.6	0.00	0.00	0.00
12,500.0	1.39	250.02	12,177.1	1,021.3	1,929.6	2,183.2	0.00	0.00	0.00
12,600.0	1.39	250.02	12,277.0	1,020.5	1,927.3	2,180.8	0.00	0.00	0.00
Rollins									
12,676.0	1.39	250.02	12,353.0	1,019.9	1,925.6	2,179.0	0.00	0.00	0.00
12,700.0	1.39	250.02	12,377.0	1,019.7	1,925.0	2,178.4	0.00	0.00	0.00
12,800.0	1.39	250.02	12,477.0	1,018.8	1,922.7	2,176.0	0.00	0.00	0.00
12,900.0	1.39	250.02	12,576.9	1,018.0	1,920.5	2,173.6	0.00	0.00	0.00
13,000.0	1.39	250.02	12,676.9	1,017.2	1,918.2	2,171.2	0.00	0.00	0.00
13,100.0	1.39	250.02	12,776.9	1,016.4	1,915.9	2,168.8	0.00	0.00	0.00
TD at 13176.1									
13,176.1	1.39	250.02	12,853.0	1,015.7	1,914.2	2,167.0	0.00	0.00	0.00

Database:	EDM 5000.1 Single User Db	Local Co-ordinate Reference:	Well ELU O13 FED 23C-13 496 - Slot 23C-13
Company:	Caerus Oil & Gas	TVD Reference:	RKB @ 8143.0usft (25')
Project:	Rio Blanco County, CO	MD Reference:	RKB @ 8143.0usft (25')
Site:	ELU O13 496 Pad	North Reference:	True
Well:	ELU O13 FED 23C-13 496	Survey Calculation Method:	Minimum Curvature
Wellbore:	Wellbore #1		
Design:	Design #4		

Design Targets

Target Name

- hit/miss target	Dip Angle	Dip Dir.	TVD	+N/-S	+E/-W	Northing	Easting	Latitude	Longitude
- Shape	(°)	(°)	(usft)	(usft)	(usft)	(usft)	(usft)		
23C-13 - OHCR	0.00	0.00	8,679.0	1,049.9	2,008.2	14,430,512.18	2,454,046.63	39.701593	-108.107564
- plan hits target center									
- Point									
23C-13 - PBHL	0.00	0.00	12,853.0	1,015.7	1,914.2	14,430,475.00	2,453,953.80	39.701500	-108.107898
- plan hits target center									
- Ellipse (radii L100.0 W50.0 on 250.00 azi)									

Formations

Measured Depth	Vertical Depth	Name	Lithology	Dip	Dip Direction
(usft)	(usft)			(°)	(°)
4,200.2	4,062.0	Wasatch			
6,703.9	6,462.0	Wasatch G			
7,016.9	6,762.0	Fort Union			
9,000.9	8,679.0	Ohio Creek			
9,537.1	9,215.0	Williams Fork			
12,125.8	11,803.0	Cameo			
12,676.0	12,353.0	Rollins			

Plan Annotations

Measured Depth	Vertical Depth	Local Coordinates		Comment
(usft)	(usft)	+N/-S (usft)	+E/-W (usft)	
500.0	500.0	0.0	0.0	Start Build 3.00
1,051.8	1,044.2	36.7	70.2	Start 7397.3 hold at 1051.8 MD
8,449.1	8,134.8	1,013.2	1,938.0	Start Drop -3.00
9,000.9	8,679.0	1,049.9	2,008.2	Start DLS 1.50 TFO 250.02
9,093.4	8,771.5	1,049.5	2,007.1	Start 4082.7 hold at 9093.4 MD
13,176.1	12,853.0	1,015.7	1,914.2	TD at 13176.1