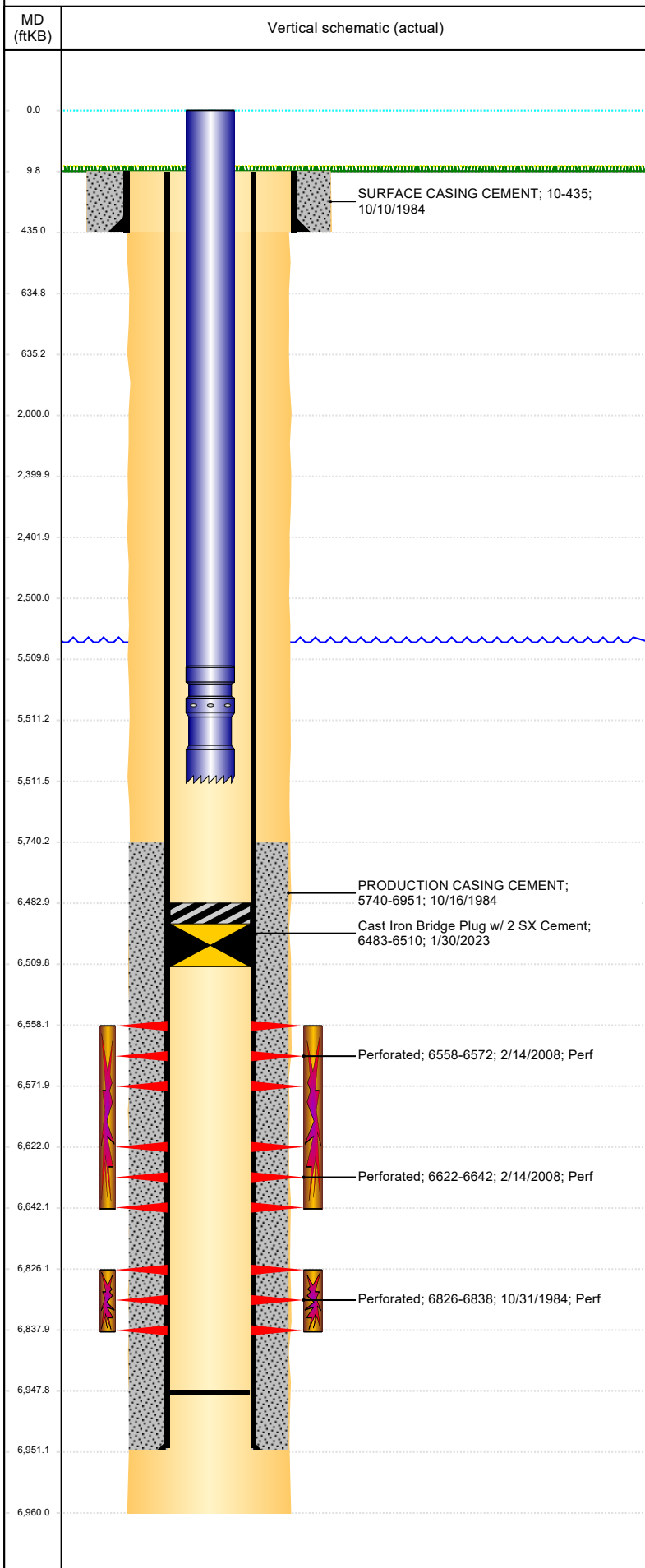




P&A Wellbore For State

Well Name: CANTRELL 01

Land, Original Hole, 3/2/2023 8:53:52 AM



Well Header										
Surface UWI 0512312019			Business Unit Rockies		Gov Auth Dist			Prod Tree Loc Land		
Orig. KB to Gnd (ft) 10.00		Original Spud Date 10/9/1984		Abandon Date		Well Sub-Status TA			High Pre N	
Comment										
Surface Location (Congressional)										
Quarter 3 NE	Quarter 4 SW	Section 22	Township 4	Twnshp N N	Range 64	Rng E/W W	Latitude (°) 40.295966827		Longitude (°) -104.539268014	
Wellbore Sections										
Section Des			Hole Size (in)		Act Top (ftKB)			Act Btm (ftKB)		
Surface			12 1/4		10.0			435.0		
Production			7 7/8		435.0			6,960.0		
Casing Strings										
Csg Des			Run Date		OD (in)	Wt/Len (lb/ft)	Grade	Top Depth (MD) (ftKB)	Set Depth (MD) (ftKB)	
Surface			10/10/1984		8 5/8	24.00		10	435	
Production Casing			10/16/1984		4 1/2	10.50		10	6951	
Cement										
Des					Start Date		Top (ftKB)		Btm (ftKB)	
SURFACE CASING CEMENT					10/10/1984		10.0		435.0	
PRODUCTION CASING CEMENT					10/16/1984		5,740.0		6,951.0	
Zone Statuses										
Zone Name		Status Date	Status	Fluid Type	Job				Prod Method	
CODELL		10/27/2016	SI	Water					Flowing	
CODELL		1/30/2023	Closed							
NIOBRARA		6/19/2009	PR							
NIOBRARA		1/30/2023	Closed							
Perforation Data										
Linked Zone			Explosive Type	Entered Shot Total	Top (ftKB)		Btm (ftKB)		Date	
NIOBRARA, Original Hole			A	56	6,558.0		6,572.0		2/14/2008	
NIOBRARA, Original Hole			B	80	6,622.0		6,642.0		2/14/2008	
CODELL, Original Hole				13	6,826.0		6,838.0		10/31/1984	
Stimulation Intervals										
Zone				Start Date		Top (ftKB)		Btm (ftKB)		
NIOBRARA, Original Hole				3/5/2008		6,558.0		6,642.0		
CODELL, Original Hole				11/9/1984		6,826.0		6,838.0		
Other In Hole										
Run Date		Des			Make		OD (in)	Top (ftKB)	Btm (ftKB)	
1/30/2023		Cast Iron Bridge Plug w/ 2 SX Cement					4	6,483.0	6,510.0	
Logs										
Date		Type					Depth Top (MD) (ftKB)		Btm (ftKB)	
10/14/1984		DIFL/DENS/GR/GRD/CAL					4,650		6,952.0	
10/14/1984		GAMMA RAY					4,650		6,952.0	
10/14/1984		INDUCTION					465		6,954.0	
10/26/1984		Cement Bond								
Plug Back Total Depths										
Date		Type		Com					PBTD (ftKB)	
2/12/2008		PLUG							6,682	
9/4/2008		PLUG							6,948	