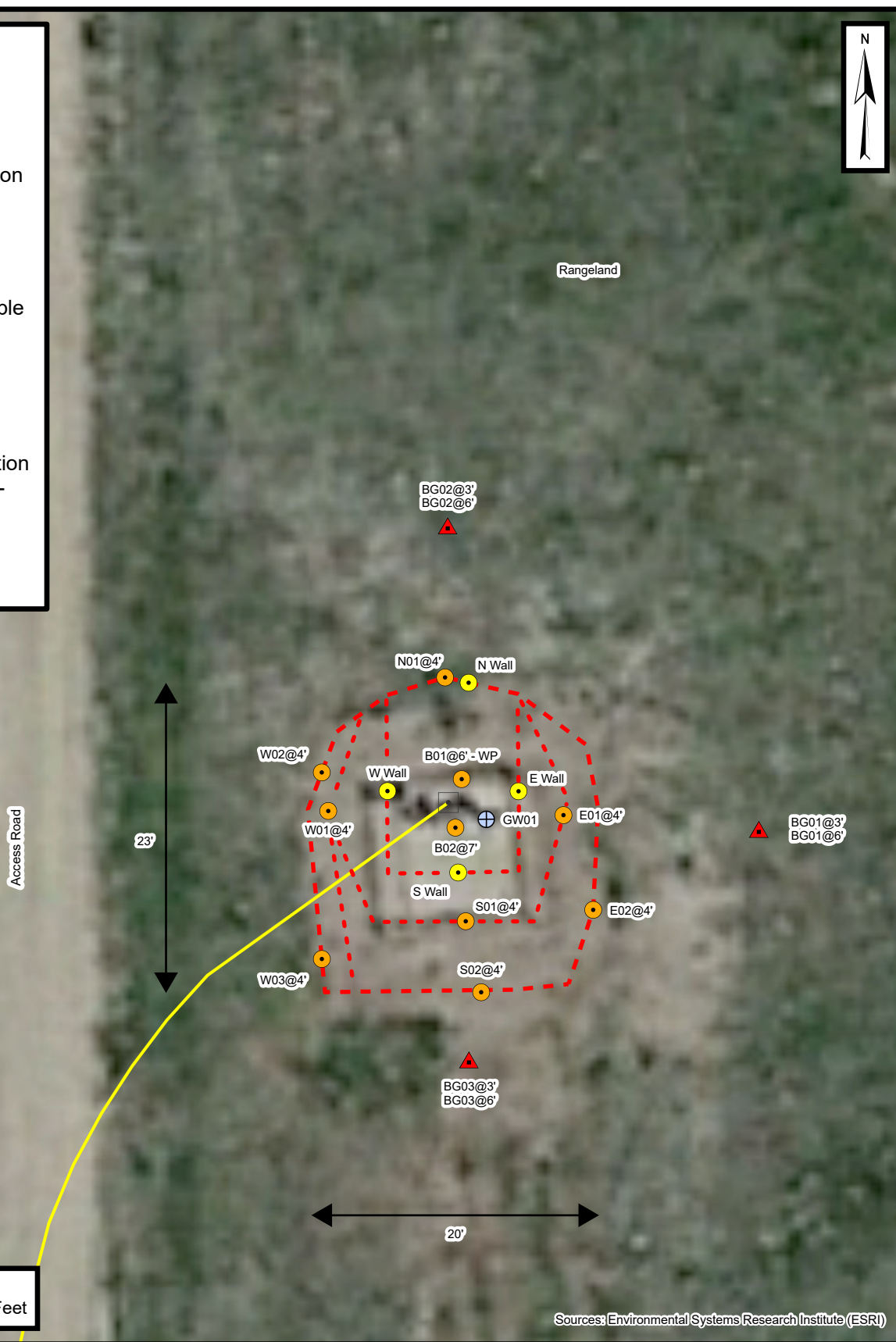


Legend

- P&A'd Wellhead
- Soil Sample Location
- Soil Screening Location
- Groundwater Sample Location
- Background Soil Sample Location
- Approximate Location of Flowline (Out-of-Service)
- Excavation Extent



Wellhead Excavation Site Map

Berig UPRR 42-35 1 Wellhead
Kerr-McGee Oil & Gas Onshore, LP
SENE SEC 35-T4N-R66W
Weld County, CO

Project Number: 09A1417138

FIGURE

1