

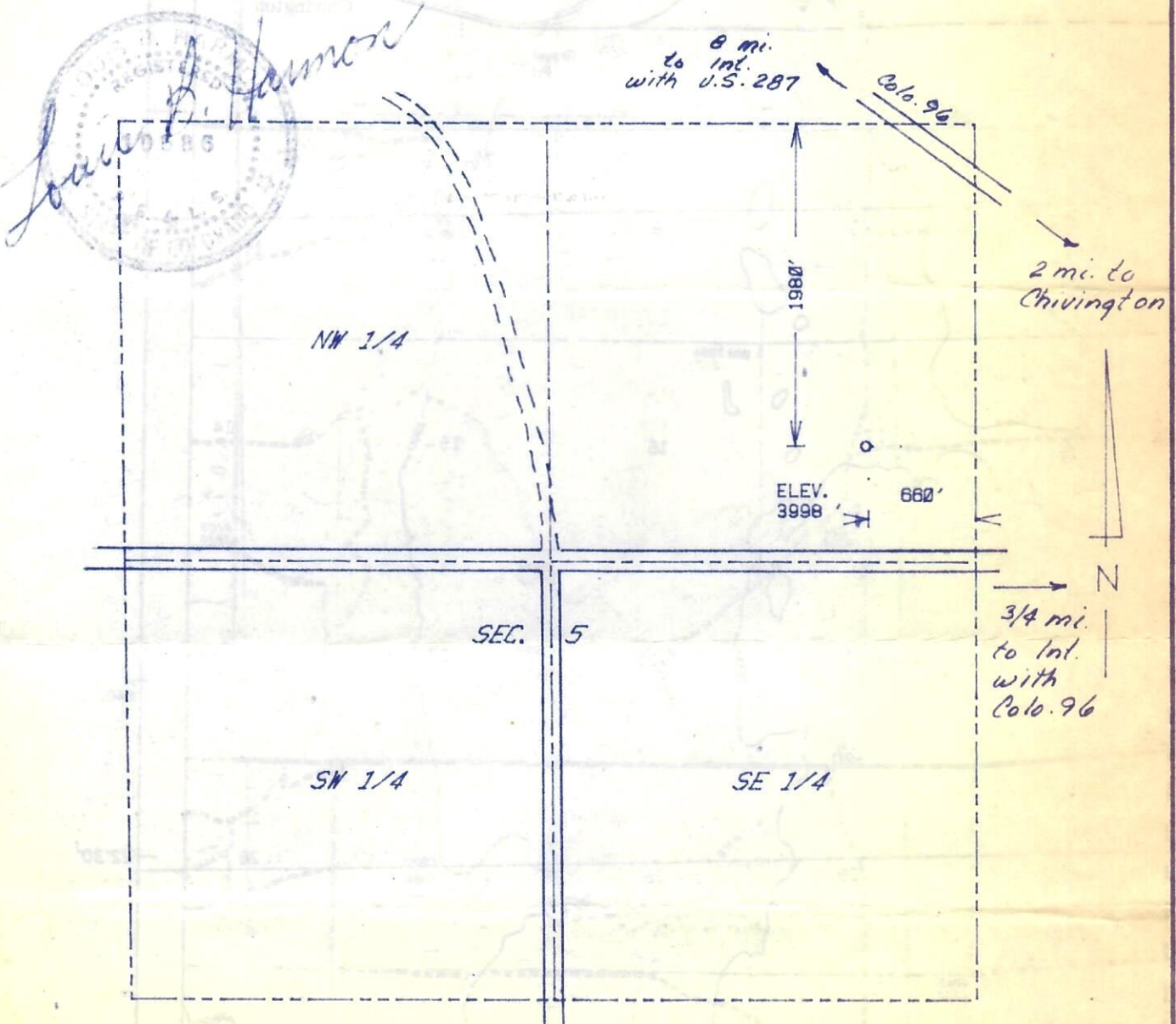


RECEIVED

JUN 21 1984

The accompanying plat is an accurate representation showing the location of a proposed well. This location may be described as a point 1980 feet south of the north line, and 660 feet west of the east line of Section 5, Township 19 S, Range 46 W of the 6th P.M., KIOWA County, COLORADO. The surface elevation at this point is 3998 feet m.s.l.

COLO. OIL & GAS CONS. COMM.



SCALE - 1"=1000'

- SURVEYED POINT
- REFERENCE STAKE (200 'S, 200 'E)
- NE 1/4 SEC. 5 , T 19 S , R 46 W

BEST IMAGE AVAILABLE

HARMON
ENGINEERING
SERVICES

REINHARDT-MICHEL #1-5

MURFIN DRILLING CO.

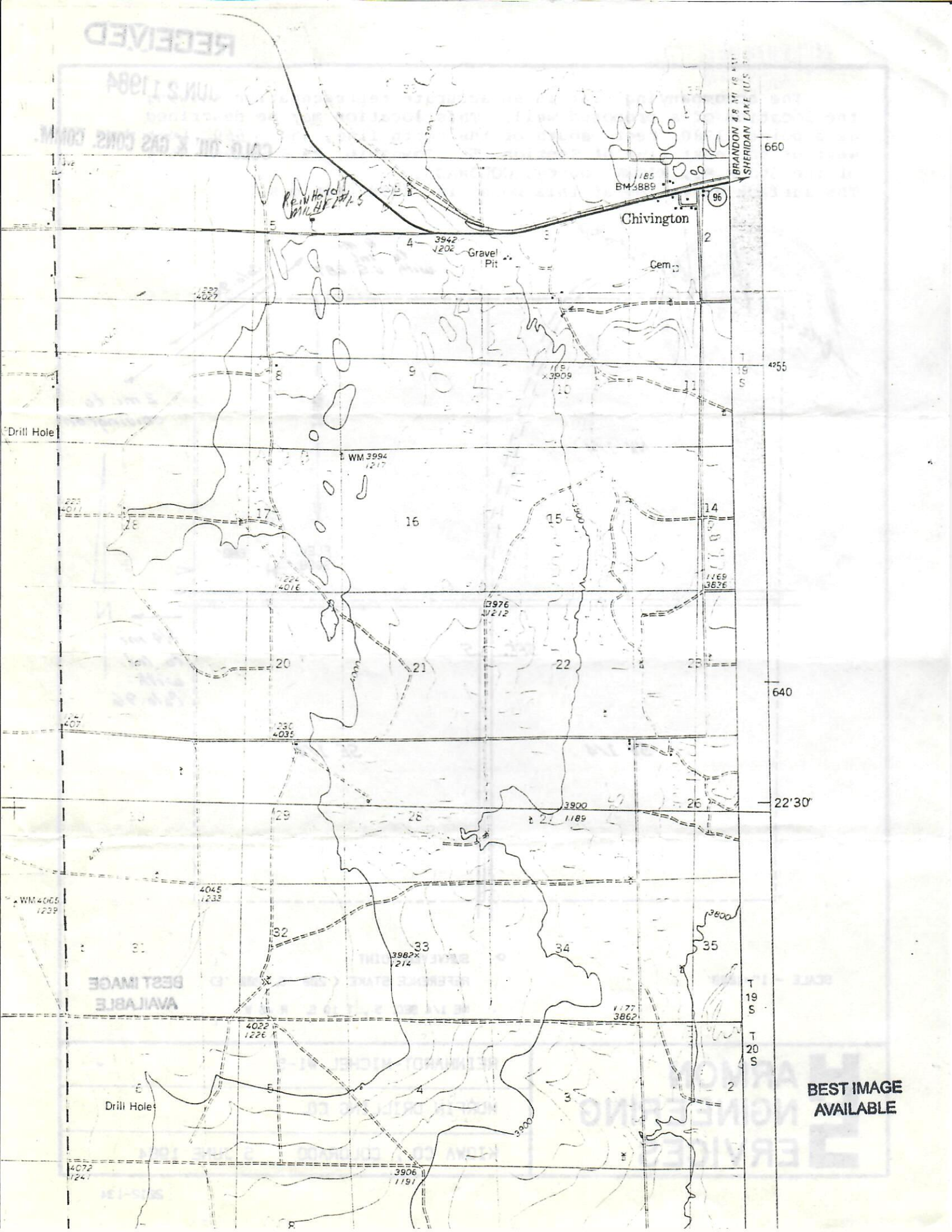
KIOWA CO., COLORADO

5 JUNE 1984

RECEIVED

JUN 5 1984

CALG. DIV. K. GAS CONS. COMM.



Reinforced
Concrete

BM 3889

Chivington

Gravel Pit

Cem.

Drill Hole

WM 3994
1217

3976
1212

WM 4065
1239

4045
1233

4030
4035

3900
1189

3982
1214

1177
3862

4022
1226

3906
1191

Drill Holes

BEST IMAGE
AVAILABLE