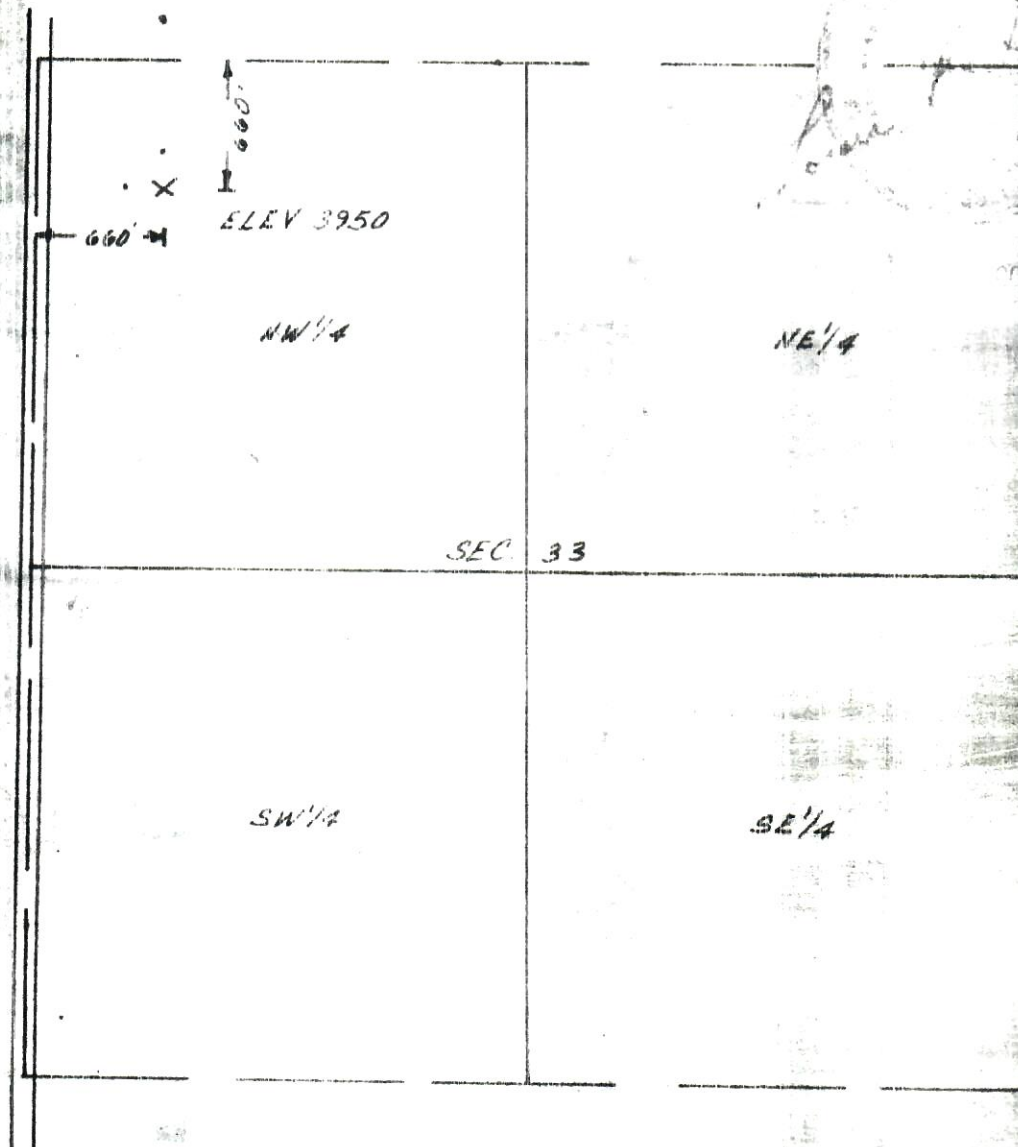




I hereby certify that the accompanying plat is an accurate representation of a correct survey showing the location of a proposed well. This location may be described as a point 660 feet South of the North line and 660 feet East of the West line of Section 33, T19S, R45W of the 6th PM, Kiowa County, Colorado.

The surface elevation at this point is 3950 feet above msl.



RECEIVED

SEP 10 1981

CO. OIL & GAS CONS. COMM.

BEST IMAGE
AVAILABLE

X SURVEYED POINT
• REFERENCE STAKE (200' North,
200' West)

HARMON
ENGINEERING
SERVICES

NW 1/4 NW 1/4, T19S, R45W

August 1981

Kiowa County, Colorado

662-114

EXAMINED

DATE

