



## **FIGURES**

**Figure 1: Topographic Site Location Map**

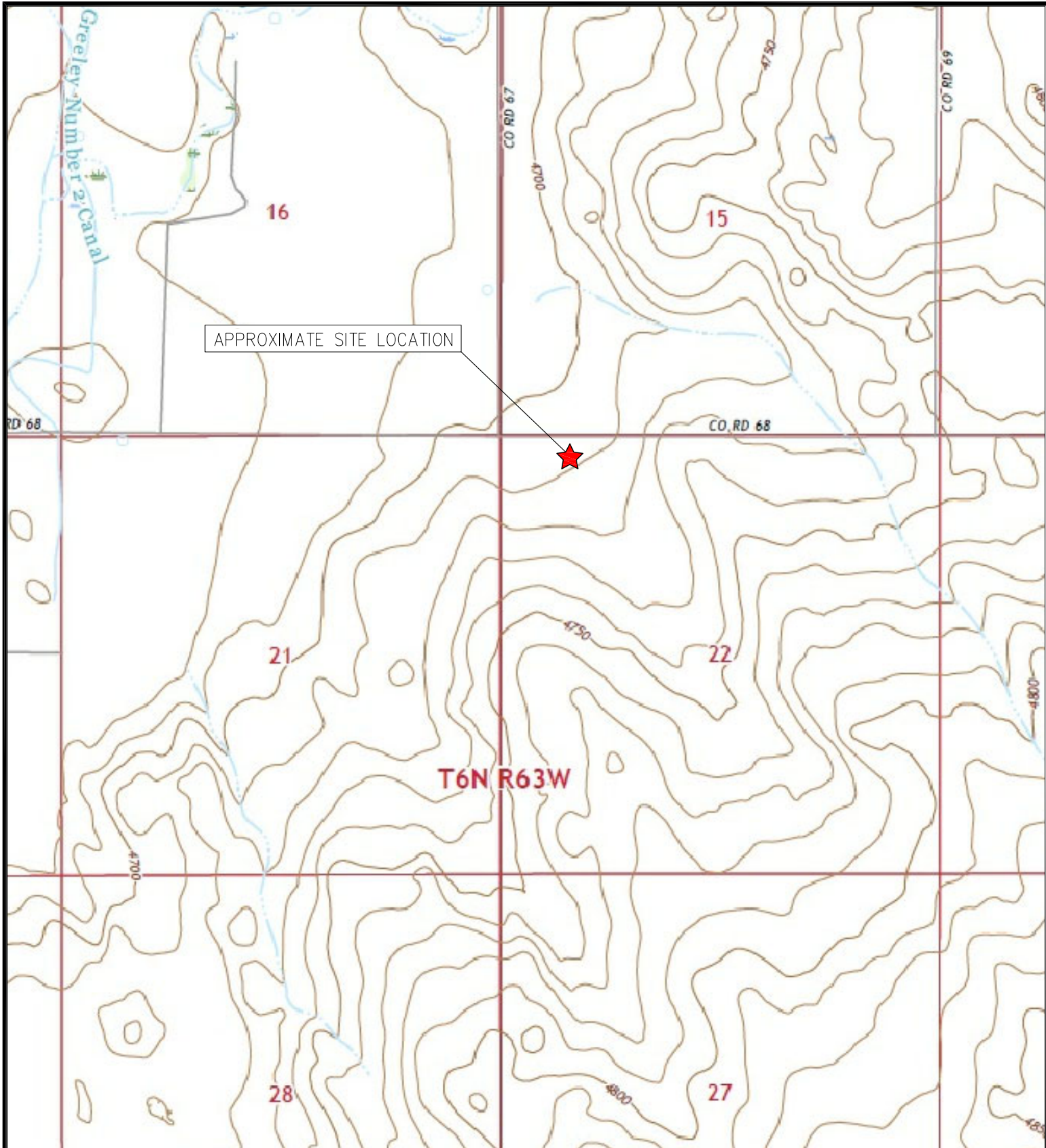
**Figure 2: Aerial Site Location Map**

**Figure 3: Initial Soil Analytical Map**

**Figure 4: Initial Polycyclic Aromatic Hydrocarbons Map**

**Figure 5: Metals in Soil Map**

**Figure 6: Confirmation Soil Analytical Map**



TOPOGRAPHIC SITE LOCATION MAP  
WELLS RANCH CENTRAL GATHERING FACILITY  
SURFACE RELEASE  
40.478227 / -104.429364  
NW¼ NW¼ SEC.22 T6N R63W 6PM  
WELD COUNTY, COLORADO  
SPILL ID 483542



**EAGLE**  
ENVIRONMENTAL  
CONSULTING, LLC

8000 W 44th Ave, Wheat Ridge, CO 80033  
Ph: 303-433-0479 • F: 303-325-5449

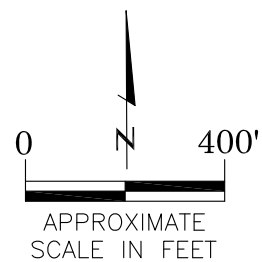
SOURCE: USGS 7.5 MINUTE TOPOGRAPHIC MAP,  
BARNESVILLE, CO QUADRANGLE 2022

FIGURE 1



# LEGEND

- APPROXIMATE FACILITY BOUNDARIES
- APPROXIMATE RELEASE LOCATION



AERIAL SITE LOCATION MAP  
WELLS RANCH CENTRAL GATHERING FACILITY  
SURFACE RELEASE  
40.478227 / -104.429364  
NW¼ NW¼ SEC.22 T6N R63W 6PM  
WELD COUNTY, COLORADO  
SPILL ID 483542

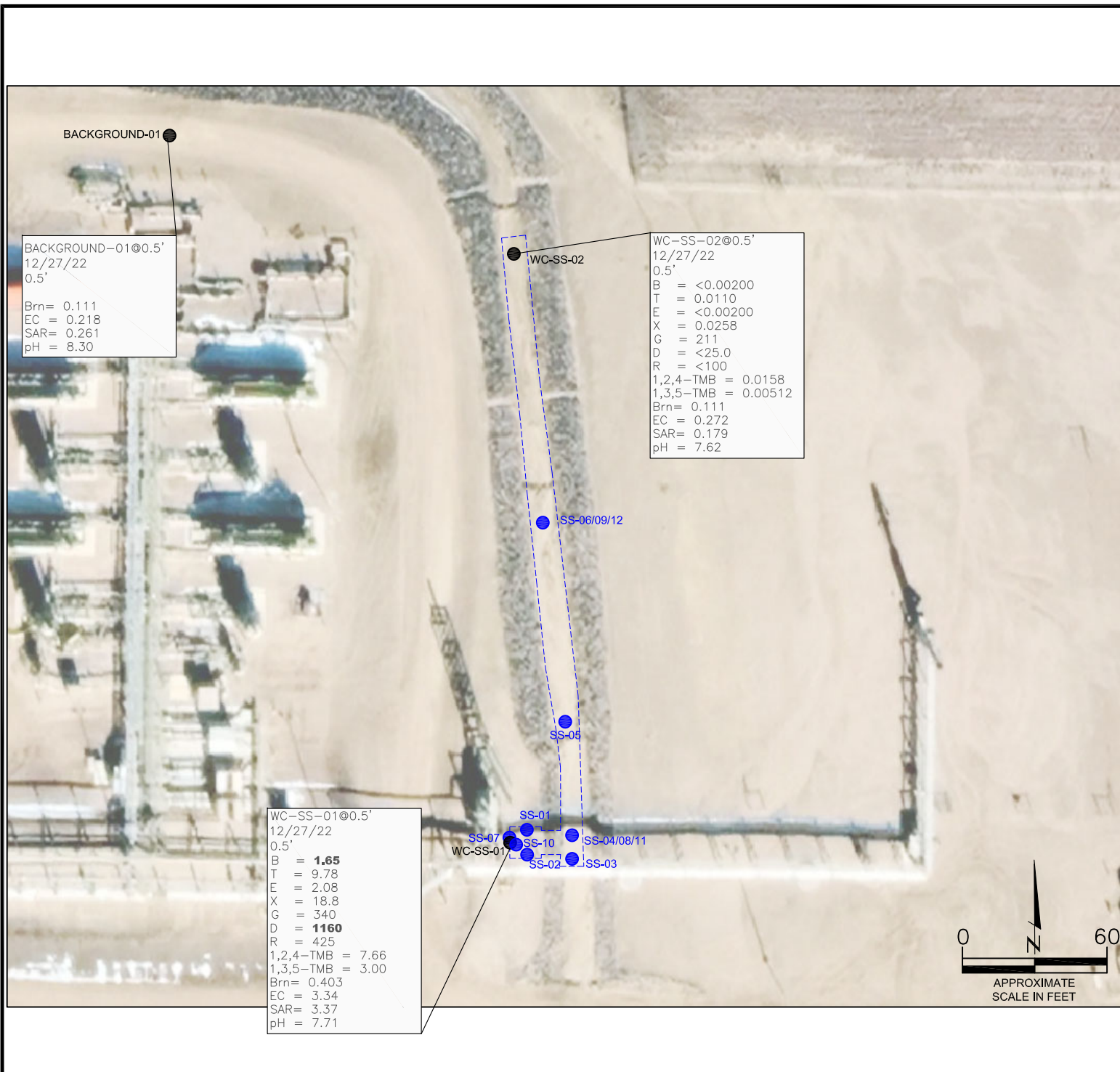
DATE: 12/27/22

FIG. NO. 2  
DRAWN BY: AMN



**EAGLE**  
ENVIRONMENTAL  
CONSULTING, LLC  
8000 W 44th Ave, Wheat Ridge, CO 80033  
Ph: 303-433-0479 • F: 303-325-5449





#### LEGEND

- APPROXIMATE RELEASE/ASSESSMENT BOUNDARIES
- SS-02 APPROXIMATE LOCATION OF INITIAL SOIL SAMPLES  
FIELD SCREENED, ONLY, WITH PHOTOIONIZATION  
DETECTOR
- SS-02 APPROXIMATE LOCATION OF INITIAL SOIL SAMPLES  
SUBMITTED FOR LABORATORY ANALYSIS
- PARAMETERS

SAMPLE LOCATION  
DATE  
DEPTH (FEET)  
B = BENZENE (mg/kg)  
T = TOLUENE (mg/kg)  
E = ETHYLBENZENE (mg/kg)  
X = TOTAL XYLENES (mg/kg)  
G = TPH-GRO (mg/kg)  
D = TPH-DRO (mg/kg)  
R = TPH-RRO (mg/kg)  
1,2,4-TMB = 1,2,4 TRIMETHYLBENZENE (mg/kg)  
1,3,5-TMB = 1,3,5 TRIMETHYLBENZENE (mg/kg)  
Brn= BORON (mg/L)  
EC = SPECIFIC CONDUCTANCE (mmhos/cm)  
SAR= SODIUM ADSORPTION RATIO  
pH = pH (pH UNITS)

mg/kg = MILLIGRAMS PER KILOGRAM  
mg/L = MILLIGRAMS PER LITER  
mmhos/cm = MILLIMHOS PER CENTIMETER

TPH-GRO = TOTAL PETROLEUM HYDROCARBONS - GASOLINE  
RANGE ORGANICS  
TPH-DRO = TOTAL PETROLEUM HYDROCARBONS - DIESEL  
RANGE ORGANICS  
TPH-RRO = TOTAL PETROLEUM HYDROCARBONS - RESIDUAL  
RANGE ORGANICS

NOTES:  
VALUES PRESENTED WITH A LESS THAN SYMBOL (<) DID NOT  
CONTAIN CONCENTRATIONS AT OR ABOVE LABORATORY  
DETECTION LIMITS.

VALUES PRESENTED IN **BOLD** EXCEED COGCC TABLE 915-1  
REGULATORY LIMITS.

COGCC = COLORADO OIL AND GAS CONSERVATION  
COMMISSION

INITIAL SOIL ANALYTICAL MAP  
WELLS RANCH CENTRAL GATHERING FACILITY  
SURFACE RELEASE  
40.478227 / -104.429364  
NW¼ NW¼ SEC.22 T6N R63W 6PM  
WELD COUNTY, COLORADO  
SPILL ID 483542

DRAWN BY:  
BPW

FIG.  
NO.  
3



**EAGLE**  
ENVIRONMENTAL  
CONSULTING, LLC  
8000 W 44th Ave, Wheat Ridge, CO 80033  
Ph: 303-433-0479 • F: 303-325-5449





WC-SS-02@0.5'  
12/27/22  
0.5'

1-Methylnaphthalene = 0.0132  
2-Methylnaphthalene = 0.0257  
Acenaphthene = 0.000997  
Anthracene = <0.00067  
Benzo(a)anthracene = <0.00067  
Benzo(a)pyrene = <0.00067  
Benzo(b)fluoranthene = <0.00067  
Benzo(k)fluoranthene = <0.00067  
Chrysene = 0.000776  
Dibenzo(a,h)anthracene = <0.00067  
Fluoranthene = <0.00067  
Fluorene = 0.00147  
Indeno(1,2,3-CD)pyrene = <0.00067  
Naphthalene = 0.00678  
Pyrene = <0.00067

WC-SS-01@0.5'  
12/27/22  
0.5'

1-Methylnaphthalene = 0.905  
2-Methylnaphthalene = 1.64  
Acenaphthene = 0.0924  
Anthracene = <0.0067  
Benzo(a)anthracene = <0.0067  
Benzo(a)pyrene = <0.0067  
Benzo(b)fluoranthene = <0.0067  
Benzo(k)fluoranthene = <0.0067  
Chrysene = 0.0345  
Dibenzo(a,h)anthracene = <0.0067  
Fluoranthene = <0.0067  
Fluorene = 0.125  
Indeno(1,2,3-CD)pyrene = <0.0067  
Naphthalene = 0.447  
Pyrene = 0.00823

#### LEGEND

- APPROXIMATE RELEASE/ASSESSMENT BOUNDARIES
- SS-02 APPROXIMATE LOCATION OF INITIAL SOIL SAMPLES  
FIELD SCREENED, ONLY, WITH PHOTOIONIZATION  
DETECTOR
- SS-02 APPROXIMATE LOCATION OF INITIAL SOIL SAMPLES  
SUBMITTED FOR LABORATORY ANALYSIS

#### PARAMETERS

##### SAMPLE LOCATION

DATE SAMPLE COLLECTED

APPROXIMATE DEPTH

POLYCYCLIC AROMATIC HYDROCARBONS (PAHs) (mg/kg)

mg/kg = MILLIGRAMS PER KILOGRAM

ND = NON-DETECT

##### NOTES:

VALUES PRESENTED WITH A LESS THAN SYMBOL (<) DID NOT  
CONTAIN CONCENTRATIONS AT OR ABOVE LABORATORY  
DETECTION LIMITS

VALUES PRESENTED IN **BOLD** CONTAIN CONCENTRATIONS  
EXCEEDING COGCC TABLE 915-1 REGULATORY LIMITS.

COGCC = COLORADO OIL AND GAS CONSERVATION COMMISSION

INITIAL POLYCYCLIC AROMATIC HYDROCARBONS MAP  
WELLS RANCH CENTRAL GATHERING FACILITY  
SURFACE RELEASE  
40.478227 / -104.429364  
NW¼ NW¼ SEC.22 T6N R63W 6PM  
WELD COUNTY, COLORADO  
SPILL ID 483542

DRAWN BY:

BPW

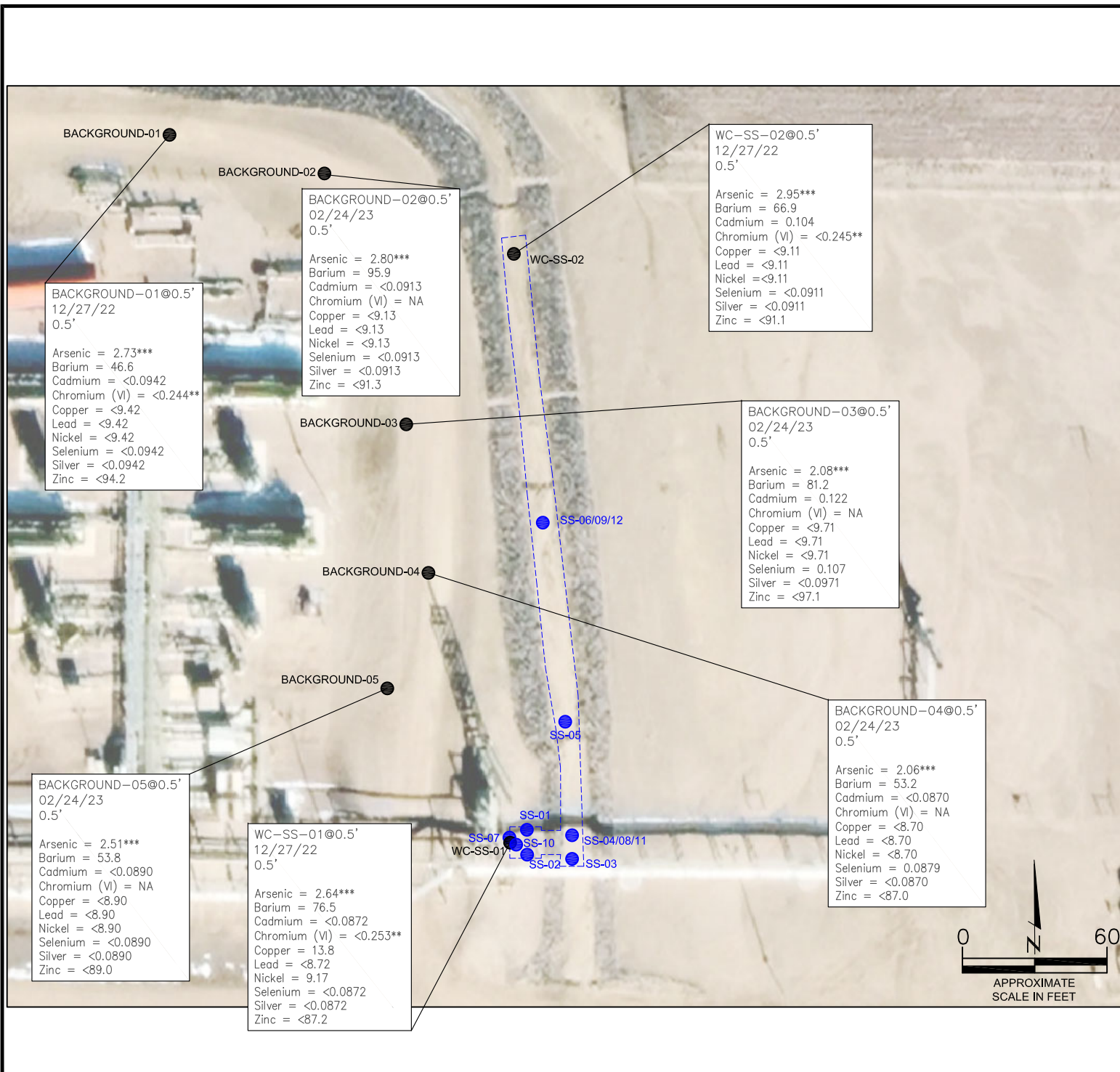
FIG.  
NO.

4



**EAGLE**  
ENVIRONMENTAL  
CONSULTING, LLC

8000 W 44th Ave, Wheat Ridge, CO 80033  
Ph: 303-433-0479 • F: 303-325-5449



**LEGEND**

----- APPROXIMATE RELEASE/ASSESSMENT BOUNDARIES

● SS-02 APPROXIMATE LOCATION OF INITIAL SOIL SAMPLES FIELD SCREENED, ONLY, WITH PHOTOIONIZATION DETECTOR

● SS-02 APPROXIMATE LOCATION OF INITIAL SOIL SAMPLES SUBMITTED FOR LABORATORY ANALYSIS

**PARAMETERS**

SAMPLE LOCATION  
DATE SAMPLE COLLECTED  
APPROXIMATE DEPTH  
Arsenic = (mg/kg)  
Barium = (mg/kg)  
Cadmium = (mg/kg)  
Chromium (VI) = (mg/kg)  
Copper = (mg/kg)  
Lead = (mg/kg)  
Nickel = (mg/kg)  
Selenium = (mg/kg)  
Silver = (mg/kg)  
Zinc = (mg/kg)

mg/kg = MILLIGRAMS PER KILOGRAM

NA – NOT ANALYZED

**NOTES:**  
VALUES PRESENTED WITH A LESS THAN SYMBOL (<) DID NOT CONTAIN CONCENTRATIONS AT/OR ABOVE LABORATORY REPORTING LIMITS AND/OR MINIMUM DETECTION LIMITS.

VALUES PRESENTED IN **BOLD** VALUES CONTAIN CONCENTRATIONS EXCEEDING COGCC TABLE 915-1 VALUES

**\*\*ACHIEVABLE PRACTICAL QUANTITATIVE LIMITS FOR HEXAVALENT CHROMIUM (Cr VI) IN SOILS IS IN THE RANGE OF 0.1 TO 1 mg/kg.**

**\*\*\*LOCAL "CLEAN-UP LEVEL" (3.05 mg/kg) IS 1.25\*BACKGROUND AVERAGE (2.44 mg/kg).**

COGCC = COLORADO OIL AND GAS CONSERVATION COMMISSION

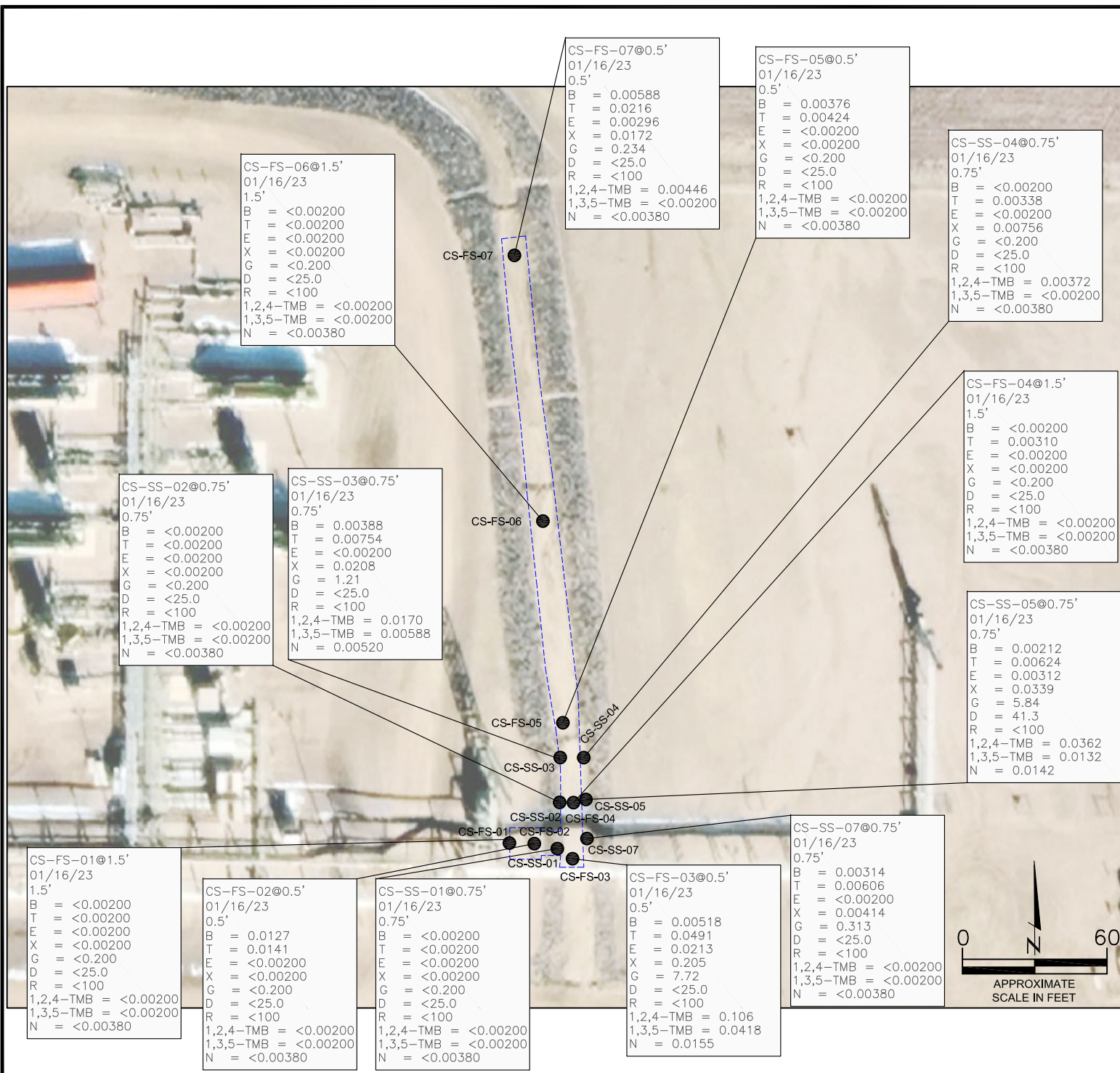
**METALS IN SOIL MAP**  
WELLS RANCH CENTRAL GATHERING FACILITY  
SURFACE RELEASE  
40.478227 / -104.429364  
NW¼ NW¼ SEC.22 T6N R63W 6PM  
WELD COUNTY, COLORADO  
SPILL ID 483542

**DRAWN BY:**  
BPW

**FIG. NO.**  
5

**EAGLE**  
ENVIRONMENTAL  
CONSULTING, LLC  
8000 W 44th Ave, Wheat Ridge, CO 80033  
Ph: 303-433-0479 • F: 303-325-5449





**LEGEND**

----- APPROXIMATE RELEASE/ASSESSMENT BOUNDARIES

● APPROXIMATE LOCATION OF SOIL SAMPLES  
SS-02 SUBMITTED FOR LABORATORY ANALYSIS

**PARAMETERS**

**SAMPLE LOCATION**  
DATE  
DEPTH (FEET)  
B = BENZENE (mg/kg)  
T = TOLUENE (mg/kg)  
E = ETHYLBENZENE (mg/kg)  
X = TOTAL XYLENES (mg/kg)  
G = TPH-GRO (mg/kg)  
D = TPH-DRO (mg/kg)  
R = TPH-RRO (mg/kg)  
1,2,4-TMB = 1,2,4 TRIMETHYLBENZENE (mg/kg)  
1,3,5-TMB = 1,3,5 TRIMETHYLBENZENE (mg/kg)  
N = NAPHTHALENE (mg/kg)

mg/kg = MILLIGRAMS PER KILOGRAM


TPH-GRO = TOTAL PETROLEUM HYDROCARBONS – GASOLINE RANGE ORGANICS  
TPH-DRO = TOTAL PETROLEUM HYDROCARBONS – DIESEL RANGE ORGANICS  
TPH-RRO = TOTAL PETROLEUM HYDROCARBONS – RESIDUAL RANGE ORGANICS

**NOTES:**  
VALUES PRESENTED WITH A LESS THAN SYMBOL (<) DID NOT CONTAIN CONCENTRATIONS AT OR ABOVE LABORATORY DETECTION LIMITS.

VALUES PRESENTED IN **BOLD** EXCEED COGCC TABLE 915-1 REGULATORY LIMITS.

COGCC = COLORADO OIL AND GAS CONSERVATION COMMISSION

**CONFIRMATION SOIL ANALYTICAL MAP**  
WELLS RANCH CENTRAL GATHERING FACILITY  
SURFACE RELEASE  
40.478227 / -104.429364  
NW¼ NW¼ SEC.22 T6N R63W 6PM  
WELD COUNTY, COLORADO  
SPILL ID 483542

<b>DRAWN BY:</b> BPW	 <b>EAGLE</b> ENVIRONMENTAL CONSULTING, LLC 8000 W 44th Ave, Wheat Ridge, CO 80033 Ph: 303-433-0479 • F: 303-325-5449
<b>FIG. NO.</b> 6	



## **TABLES**

**Table 1: Photoionization Detector Reading Summary**

**Table 2: Soil Analytical Results Summary**

**Table 3: Polycyclic Aromatic Hydrocarbons**

**Table 4: Metals Analytical Results Summary**



**TABLE 1**  
**PHOTOIONIZATION DETECTOR READING SUMMARY**  
**WELLS RANCH CENTRAL GATHERING FACILITY**  
**SURFACE RELEASE**  
**40.478227 / -104.429364**  
**NW1/4 NW1/4 SEC.22 T6N R63W 6PM**  
**WELD COUNTY, COLORADO**  
**SPILL ID 483542**

Sample Location (Latitude/Longitude)	Date	Approximate Depth (feet)	PID Reading (ppm-v)	Lab Submission (Y/N)
WC-SS-01 @ 0.5' (40.478227 / -104.429349)	12/27/22	0.5	833.7	Y
WC-SS-02 @ 0.5' (40.478891 / -104.429331)	12/27/22	0.5	72.3	Y
SS-01 @ 0.5' (40.478249 / -104.429324)	12/27/22	0.5	7.3	N
SS-02 @ 0.5' (40.478223 / -104.429325)	12/27/22	0.5	16.2	N
SS-03 @ 0.5' (40.478213 / -104.429238)	12/27/22	0.5	20.3	N
SS-04 @ 0.5' (40.478253 / -104.429240)	12/27/22	0.5	231.5	N
SS-05 @ 0.5' (40.478372 / -104.429248)	12/27/22	0.5	56.8	N
SS-06 @ 0.5' (40.478613 / -104.429291)	12/27/22	0.5	185.2	N
SS-07 @ 0.75' (40.478227 / -104.429349)	12/27/22	0.75	323.3	N
SS-08 @ 0.75' (40.478253 / -104.429240)	12/27/22	0.75	94.8	N
SS-09 @ 0.75' (40.478613 / -104.429291)	12/27/22	0.75	128.0	N
Background-01 @ 0.5' (40.479041 / -104.429836)	12/27/22	0.5	7.7	Y
SS-10 @ 1.5' (40.478268 / -104.429327)	12/30/22	1.5	3.6	N
SS-11 @ 1' (40.478285 / -104.429242)	12/30/22	1	108.5	N
SS-12 @ 1' (40.478606 / -104.429293)	12/30/22	1	43.8	N
CS-SS-01 @ 0.75' (40.478245 / -104.429264)	01/16/23	0.75	2.6	Y
CS-SS-02 @ 0.75' (40.478291 / -104.429263)	01/16/23	0.75	4.8	Y

**TABLE 1**  
**PHOTOIONIZATION DETECTOR READING SUMMARY**  
**WELLS RANCH CENTRAL GATHERING FACILITY**  
**SURFACE RELEASE**  
**40.478227 / -104.429364**  
**NW1/4 NW1/4 SEC.22 T6N R63W 6PM**  
**WELD COUNTY, COLORADO**  
**SPILL ID 483542**

Sample Location (Latitude/Longitude)	Date	Approximate Depth (feet)	PID Reading (ppm-v)	Lab Submission (Y/N)
CS-SS-03 @ 0.75' (40.478340 / -104.429272)	01/16/23	0.75	13.5	Y
CS-SS-04 @ 0.75' (40.478335 / -104.429223)	01/16/23	0.75	16.9	Y
CS-SS-05 @ 0.75' (40.478288 / -104.429215)	01/16/23	0.75	21.1	Y
CS-SS-06 @ 0.75' (40.478286 / -104.429242)	01/16/23	0.75	56.1	N
CS-SS-07 @ 0.75' (40.478244 / -104.429219)	01/16/23	0.75	8.9	Y
CS-FS-01 @ 1.5' (40.478241 / -104.429347)	01/16/23	1.5	0.1	Y
CS-FS-02 @ 0.5' (40.478241 / -104.429319)	01/16/23	0.5	6.7	Y
CS-FS-03 @ 0.5' (40.478224 / -104.429239)	01/16/23	0.5	23.8	Y
CS-FS-04 @ 1.5' (40.478290 / -104.429241)	01/16/23	1.5	12.1	Y
CS-FS-05 @ 0.5' (40.478387 / -104.429260)	01/16/23	0.5	2.4	Y
CS-FS-06 @ 1' (40.478616 / -104.429296)	01/16/23	1	0.8	Y
CS-FS-07 @ 0.5' (40.478930 / -104.429343)	01/16/23	0.5	8.1	Y
Background-02 @ 0.5' (40.478938 / -104.429539)	02/24/23	0.5	4.1	Y
Background-03 @ 0.5' (40.478686 / -104.429499)	02/24/23	0.5	2.7	Y
Background-04 @ 0.5' (40.478512 / -104.429466)	02/24/23	0.5	2.9	Y
Background-05 @ 0.5' (40.478352 / -104.429612)	02/24/23	0.5	1.4	Y
(Y/N) = Yes or No ppm-v = parts per million by volume PID = Photoionization Detector				



TABLE 2  
SOIL ANALYTICAL RESULTS SUMMARY  
WELLS RANCH CENTRAL GATHERING FACILITY  
SURFACE RELEASE  
40.478227 / -104.429364  
NW1/4 NW1/4 SEC.22 T6N R63W 6PM  
WELD COUNTY, COLORADO  
SPILL ID 483542

Sample Location (Latitude/Longitude)	Date	Approximate Depth (feet)	PID Reading (ppm-v)	Benzene (mg/kg)	Toluene (mg/kg)	Ethylbenzene (mg/kg)	Total Xylenes (mg/kg)	TPH-GRO (mg/kg)	TPH-DRO (mg/kg)	TPH-RRO (mg/kg)	1,2,4-TMB (mg/kg)	1,3,5-TMB (mg/kg)	Boron (mg/L)	Specific Conductance (mmhos/cm)	pH (pH units)	SAR
<b>COGCC Table 915-1 Residential Screening Levels (mg/kg)</b>				<b>1.20</b>	<b>490</b>	<b>5.8</b>	<b>58</b>	<b>500</b>			<b>30</b>	<b>27</b>	<b>2</b>	<b>&lt;4</b>	<b>6-8.3</b>	<b>&lt;6</b>
WC-SS-01 @ 0.5' (40.478227 / -104.429349)	12/27/22	0.5	833.7	<b>1.65</b>	9.78	2.08	18.8	340	<b>1160</b>	425	7.66	3.00	0.403	3.34	7.71	3.37
WC-SS-02 @ 0.5' (40.478891 / -104.429331)	12/27/22	0.5	72.3	<0.00200	0.00110	<0.00200	0.0258	211	<25.0	<100	0.0158	0.00512	0.111	0.272	7.62	0.179
Background-01 @ 0.5' (40.479041 / -104.429836)	12/27/22	0.5	7.7	NA	NA	NA	NA	NA	NA	NA	NA	NA	0.111	0.218	8.30	0.261
CS-SS-01 @ 0.75' (40.478245 / -104.429264)	01/16/23	0.75	2.6	<0.00200	<0.00200	<0.00200	<0.00200	<0.200	<25.0	<100	<0.00200	<0.00200	NA	NA	NA	NA
CS-SS-02 @ 0.75' (40.478291 / -104.429263)	01/16/23	0.75	4.8	<0.00200	<0.00200	<0.00200	<0.00200	<0.200	<25.0	<100	<0.00200	<0.00200	NA	NA	NA	NA
CS-SS-03 @ 0.75' (40.478340 / -104.429272)	01/16/23	0.75	13.5	0.00388	0.00754	<0.00200	0.0208	1.21	<25.0	<100	0.0170	0.00588	NA	NA	NA	NA
CS-SS-04 @ 0.75' (40.478335 / -104.429223)	01/16/23	0.75	16.9	<0.00200	0.00338	<0.00200	0.00756	<0.200	<25.0	<100	0.00372	<0.00200	NA	NA	NA	NA
CS-SS-05 @ 0.75' (40.478288 / -104.429215)	01/16/23	0.75	21.1	0.00212	0.00624	0.00312	0.0339	5.84	41.3	<100	0.0362	0.0132	NA	NA	NA	NA
CS-SS-07 @ 0.75' (40.478244 / -104.429219)	01/16/23	0.75	8.9	0.00314	0.00606	<0.00200	0.00414	0.313	<25.0	<100	<0.00200	<0.00200	NA	NA	NA	NA
CS-FS-01 @ 1.5' (40.478241 / -104.429347)	01/16/23	1.5	0.1	<0.00200	<0.00200	<0.00200	<0.00200	<0.200	<25.0	<100	<0.00200	<0.00200	NA	NA	NA	NA
CS-FS-02 @ 0.5' (40.478241 / -104.429319)	01/16/23	0.5	6.7	0.0127	0.0141	<0.00200	<0.00200	<0.200	<25.0	<100	<0.00200	<0.00200	NA	NA	NA	NA
CS-FS-03 @ 0.5' (40.478224 / -104.429239)	01/16/23	0.5	23.8	0.00518	0.0491	0.0213	0.205	7.72	<25.0	<100	0.106	0.0418	NA	NA	NA	NA
CS-FS-04 @ 1.5' (40.478290 / -104.429241)	01/16/23	1.5	12.1	<0.00200	0.00310	<0.00200	<0.00200	<0.200	<25.0	<100	<0.00200	<0.00200	NA	NA	NA	NA
CS-FS-05 @ 0.5' (40.478387 / -104.429260)	01/16/23	0.5	2.4	0.00376	0.00424	<0.00200	<0.00200	<0.200	<25.0	<100	<0.00200	<0.00200	NA	NA	NA	NA
CS-FS-06 @ 1' (40.478616 / -104.429296)	01/16/23	1	0.8	<0.00200	<0.00200	<0.00200	<0.00200	<0.200	<25.0	<100	<0.00200	<0.00200	NA	NA	NA	NA
CS-FS-07 @ 0.5' (40.478930 / -104.429343)	01/16/23	0.5	8.1	0.00588	0.0216	0.00296	0.0172	0.234	<25.0	<100	0.00446	<0.00200	NA	NA	NA	NA

COGCC = Colorado Oil and Gas Conservation Commission

NA - Not Analyzed

mg/kg = milligrams per kilogram

mmhos/cm = millimhos per centimeter

PID = Photoionization Detector

ppm-v = parts per million by volume

mg/L = milligrams per liter

SAR = Sodium Adsorption Ratio

Notes: Values presented with a less than symbol (<) did not contain concentrations at or above the laboratory reporting limit.

Values presented in **BOLD** contained concentrations exceeding COGCC Table 915-1 Regulatory Limits.

TABLE 3  
PAH ANALYTICAL RESULTS SUMMARY  
WELLS RANCH CENTRAL GATHERING FACILITY  
SURFACE RELEASE  
40.478227 / -104.429364  
NW1/4 NW1/4 SEC.22 T6N R63W 6PM  
WELD COUNTY, COLORADO  
SPILL ID 483542

Sample Location (Latitude/Longitude)	Date	Approximate Depth (feet)	PID Reading (ppm-v)	1-Methyl- naphthalene (mg/kg)	2-Methyl-naphthalene (mg/kg)	Acenaphthene (mg/kg)	Anthracene (mg/kg)	Benzo(a)-anthracene (mg/kg)	Benzo(a)- pyrene (mg/kg)	Benzo(b)- fluoranthene (mg/kg)	Benzo(k)- fluoranthene (mg/kg)	Chrysene (mg/kg)	Dibenzo(a,h)- anthracene (mg/kg)	Fluoranthene (mg/kg)	Fluorene (mg/kg)	Indeno(1,2,3- cd)-pyrene (mg/kg)	Naphthalene (mg/kg)	Pyrene (mg/kg)
<b>COGCC Table 915-1 Residential Screening Levels</b>				<b>18</b>	<b>24</b>	<b>360</b>	<b>1,800</b>	<b>1.1</b>	<b>0.11</b>	<b>1.1</b>	<b>11</b>	<b>110</b>	<b>0.11</b>	<b>240</b>	<b>240</b>	<b>1.1</b>	<b>2</b>	<b>180</b>
WC-SS-01 @ 0.5' (40.478227 / -104.429349)	12/27/22	0.5	833.7	0.905	1.64	0.0924	<0.0067	<0.0067	<0.0067	<0.0067	<0.0067	0.0345	<0.0067	<0.0067	0.125	<0.0067	0.447	0.0082
WC-SS-02 @ 0.5' (40.478891 / -104.429331)	12/27/22	0.5	72.3	0.0132	0.0257	0.000997	<0.00067	<0.00067	<0.00067	<0.00067	<0.00067	0.000776	<0.00067	<0.00067	0.00147	<0.00067	0.00678	<0.00067
CS-SS-01 @ 0.75' (40.478245 / -104.429264)	01/16/23	0.75	2.6	NA	NA	NA	NA	NA	NA	NA	NA	NA	NA	NA	NA	NA	<0.00380	NA
CS-SS-02 @ 0.75' (40.478291 / -104.429263)	01/16/23	0.75	4.8	NA	NA	NA	NA	NA	NA	NA	NA	NA	NA	NA	NA	NA	<0.00380	NA
CS-SS-03 @ 0.75' (40.478340 / -104.429272)	01/16/23	0.75	13.5	NA	NA	NA	NA	NA	NA	NA	NA	NA	NA	NA	NA	NA	0.00520	NA
CS-SS-04 @ 0.75' (40.478335 / -104.429223)	01/16/23	0.75	16.9	NA	NA	NA	NA	NA	NA	NA	NA	NA	NA	NA	NA	NA	<0.00380	NA
CS-SS-05 @ 0.75' (40.478288 / -104.429215)	01/16/23	0.75	21.1	NA	NA	NA	NA	NA	NA	NA	NA	NA	NA	NA	NA	NA	0.0142	NA
CS-SS-07 @ 0.75' (40.478244 / -104.429219)	01/16/23	0.75	8.9	NA	NA	NA	NA	NA	NA	NA	NA	NA	NA	NA	NA	NA	<0.00380	NA
CS-FS-01 @ 1.5' (40.478241 / -104.429347)	01/16/23	1.5	0.1	NA	NA	NA	NA	NA	NA	NA	NA	NA	NA	NA	NA	NA	<0.00380	NA
CS-FS-02 @ 0.5' (40.478241 / -104.429319)	01/16/23	0.5	6.7	NA	NA	NA	NA	NA	NA	NA	NA	NA	NA	NA	NA	NA	<0.00380	NA
CS-FS-03 @ 0.5' (40.478224 / -104.429239)	01/16/23	0.5	23.8	NA	NA	NA	NA	NA	NA	NA	NA	NA	NA	NA	NA	NA	0.0155	NA
CS-FS-04 @ 1.5' (40.478290 / -104.429241)	01/16/23	1.5	12.1	NA	NA	NA	NA	NA	NA	NA	NA	NA	NA	NA	NA	NA	<0.00380	NA
CS-FS-05 @ 0.5' (40.478387 / -104.429260)	01/16/23	0.5	2.4	NA	NA	NA	NA	NA	NA	NA	NA	NA	NA	NA	NA	NA	<0.00380	NA
CS-FS-06 @ 1' (40.478616 / -104.429296)	01/16/23	1	0.8	NA	NA	NA	NA	NA	NA	NA	NA	NA	NA	NA	NA	NA	<0.00380	NA
CS-FS-07 @ 0.5' (40.478930 / -104.429343)	01/16/23	0.5	8.1	NA	NA	NA	NA	NA	NA	NA	NA	NA	NA	NA	NA	NA	<0.00380	NA
COGCC = Colorado Oil and Gas Conservation Commission mg/kg = milligrams per kilogram PID = Photoionization Detector ppm-v = parts per million by volume Notes: Values presented with a less than symbol (<) did not contain concentrations at or above the laboratory reporting limit. Values presented in <b>BOLD</b> contained concentrations exceeding COGCC Table 915-1 Regulatory Limits																		



TABLE 4  
METALS ANALYTICAL RESULTS SUMMARY  
WELLS RANCH CENTRAL GATHERING FACILITY  
SURFACE RELEASE  
40.478227 / -104.429364  
NW1/4 NW1/4 SEC.22 T6N R63W 6PM  
WELD COUNTY, COLORADO  
SPILL ID 483542

Sample Location (Latitude/Longitude)	Date	Approximate Depth (feet)	Arsenic (mg/kg)	Barium (mg/kg)	Cadmium (mg/kg)	Hexavalent Chromium (mg/kg)	Copper (mg/kg)	Lead (mg/kg)	Nickel (mg/kg)	Selenium (mg/kg)	Silver (mg/kg)	Zinc (mg/kg)
<b>COGCC Table 915-1 Residential Screening Levels</b>			<b>0.68***</b>	<b>15,000</b>	<b>71</b>	<b>0.3**</b>	<b>3,100</b>	<b>400</b>	<b>1,500</b>	<b>390</b>	<b>390</b>	<b>23,000</b>
<b>Local Clean-up Levels</b>			<b>3.05***</b>	--	--	<b>0.1 to 1**</b>	--	--	--	--	--	--
WC-SS-01 @ 0.5' (40.478227 / -104.429349)	12/27/22	0.5	2.64***	76.5	<0.0872	<0.253**	13.8	<8.72	9.17	<0.0872	<0.0872	<87.2
WC-SS-02 @ 0.5' (40.478891 / -104.429331)	12/27/22	0.5	2.95***	66.9	0.104	<0.245**	<9.11	<9.11	<9.11	<0.0911	<0.0911	<91.1
Background-01 @ 0.5' (40.479041 / -104.429836)	12/27/22	0.5	2.73***	46.6	<0.0942	<0.244**	<9.42	<9.42	<9.42	<0.0942	<0.0942	<94.2
Background-02 @ 0.5' (40.478938 / -104.429539)	02/24/23	0.5	2.80***	95.9	<0.0913	NA	<9.13	<9.13	<9.13	<0.0913	<0.0913	<91.3
Background-03 @ 0.5' (40.478686 / -104.429499)	02/24/23	0.5	2.08***	81.2	0.122	NA	<9.71	<9.71	<9.71	0.107	<0.0971	<97.1
Background-04 @ 0.5' (40.478512 / -104.429466)	02/24/23	0.5	2.06***	53.2	<0.0870	NA	<8.70	<8.70	<8.70	0.0879	<0.0870	<87.0
Background-05 @ 0.5' (40.478352 / -104.429612)	02/24/23	0.5	2.51***	53.8	<0.0890	NA	<8.90	<8.90	<8.90	<0.0890	<0.0890	<89.0

COGCC = Colorado Oil and Gas Conservation Commission

NA - Not Analyed

mg/kg = milligrams per kilogram

Notes: Values presented with a less than symbol (<) did not contain concentrations at or above the laboratory reporting limit or minimum detection levels.

Values presented in **BOLD** contained concentrations exceeding applicable COGCC Table 915-1 Regulatory Limits

\*\*Achievable practical quantitative limits for Hexavalent Chromium in soils is in the range of 0.1 to 1 mg/kg.

\*\*\*Local clean-up level (3.05 mg/kg) is 1.25\*background mean (2.44 mg/kg)



## **ATTACHMENT A**

### **Photo Log**

Wells Ranch Central Gathering Facility  
NW¼ NW¼ Sec.22 T6N R63W 6PM  
Spill ID 483542

Surface Release Assessment

December 2022 – February 2023



## Initial Release – 12/23/22 & 12/24/22



Surface release from bleed valve  
-Fluid migration into retention/rip rap

Immediate clean-up response and containment coordinated to address free standing petroleum and odor



# Initial Release Assessment – 12/27/22



Looking west

Minimal excavation completed around surface spill area

Total depth ~0.5'

Residual petroleum hydrocarbon staining and odor observed



# Initial Release Assessment – 12/27/22



Looking southeast

Minimal excavation completed around surface spill area

Total depth ~0.5'

Residual petroleum hydrocarbon staining and odor observed

# Initial Release Assessment – 12/27/22



Looking south

Minimal excavation completed around surface spill area

Total depth ~0.5'

Residual petroleum hydrocarbon staining and odor observed



# Initial Release Assessment– 12/27/22



Looking north-northwest

Minimal excavation completed around surface spill area

Total depth ~0.5'

Residual petroleum hydrocarbon staining and odor observed



# Initial Release Assessment – 12/27/22



Looking north-northwest

Minimal excavation completed around surface spill area

Total depth ~0.5'

Residual petroleum hydrocarbon staining and odor observed



# Initial Release Assessment – 12/27/22



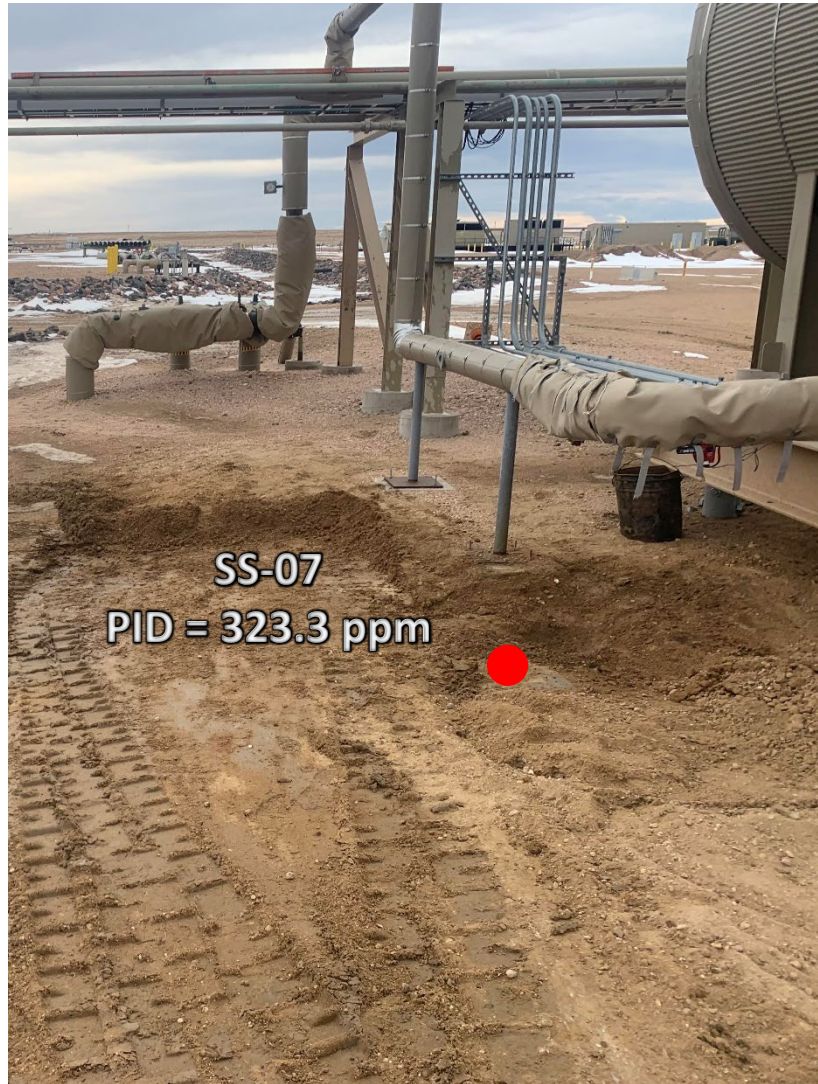
Looking north-northwest

Minimal excavation completed around surface spill area

Total depth ~0.5'

Residual petroleum hydrocarbon staining and odor observed

# Initial Release Assessment – 12/27/22



Looking southwest

Area around WC-SS-01 over-excavated

Total depth ~0.75'

Residual petroleum hydrocarbon staining and odor observed



# Initial Release Assessment – 12/27/22



Looking north

Area around SS-04 over-excavated

Total depth ~0.75'

Residual petroleum hydrocarbon staining and odor observed



# Initial Release Assessment – 12/27/22



Looking south

Area around SS-06 over-excavated

Total depth ~0.75'

Residual petroleum hydrocarbon staining and odor observed



## Release Assessment – 12/30/22



Looking west

Previously observed impacts removed

Total depth ~1.5'

No petroleum hydrocarbon staining or odor observed

## Release Assessment – 12/30/22



Looking north

Previously observed impacts removed

Total depth ~1'

No petroleum hydrocarbon staining observed, slight to strong odor observed



## Release Assessment – 12/30/22



Looking east

Previously observed impacts removed

Total depth ~1'

No petroleum hydrocarbon staining or odor observed



## Confirmation Sampling – 01/16/23



Looking south

Previously observed impacts removed

Total depth ~0.5-1.5'

No petroleum hydrocarbon staining or odor observed



## Confirmation Sampling – 01/16/23



Looking south

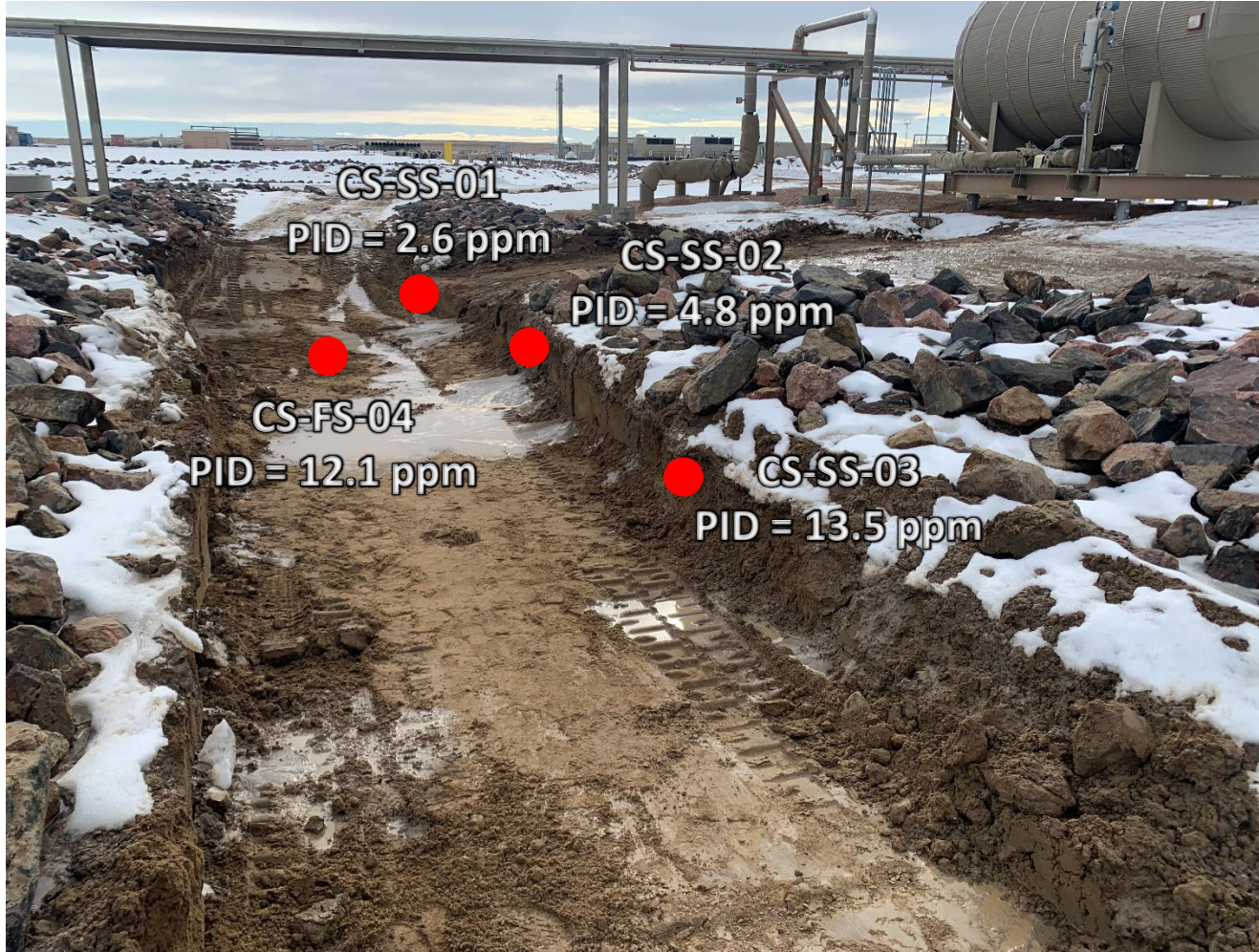
Previously observed impacts removed

Total depth ~0.5'

No petroleum hydrocarbon staining or odor observed



## Confirmation Sampling – 01/16/23



Looking southwest

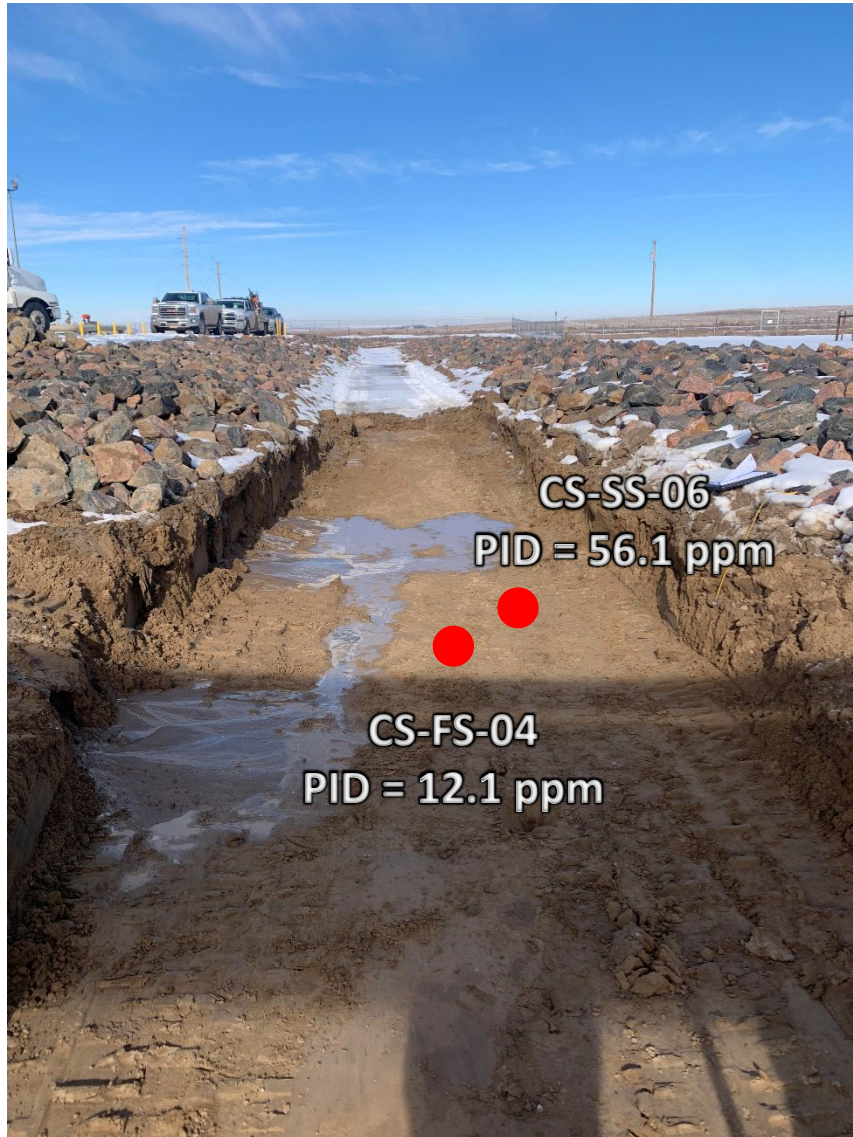
Previously observed impacts removed

Total depth ~1.5'

No petroleum hydrocarbon staining or odor observed



## Confirmation Sampling – 01/16/23



Looking north

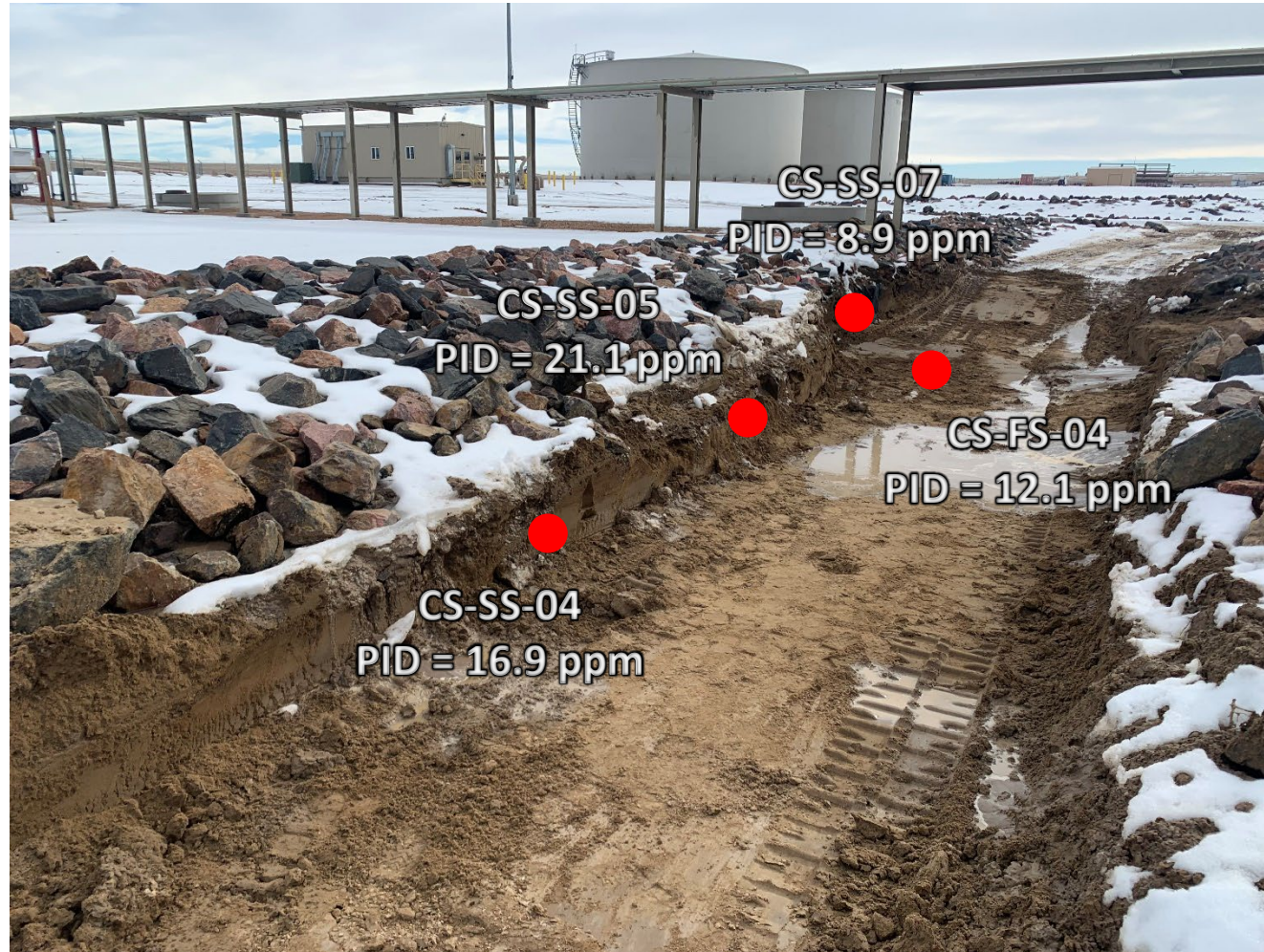
Previously observed impacts removed

Total depth ~1.5'

Petroleum hydrocarbon odor observed (CS-SS-06) –  
over-excavated further – confirmation sample  
collection (CS-FS-04)



## Confirmation Sampling – 01/16/23



Looking southeast

Previously observed impacts removed

Total depth ~1.5'

No petroleum hydrocarbon staining or odor observed

## Confirmation Sampling – 01/16/23



Looking south

Previously observed impacts removed

Total depth ~0.5'

No petroleum hydrocarbon staining or odor observed



## Confirmation Sampling – 01/16/23



Looking south

Previously observed impacts removed

Total depth ~1'

No petroleum hydrocarbon staining or odor observed



## Confirmation Sampling – 01/16/23



Looking north-northwest

Previously observed impacts removed

Total depth ~0.5'

No petroleum hydrocarbon staining or odor observed



## **ATTACHMENT B**

### **Laboratory Analytical Reports**





January 06, 2023

Eagle Environmental Consulting, Inc.

Martin C Eckert III

8000 W 44th Ave

Wheat Ridge CO 80033

Project Name - Noble - Wells Ranch CGF

Project Number - [none]

Attached are your analytical results for Noble - Wells Ranch CGF received by Origins Laboratory, Inc. December 27, 2022. This project is associated with Origins project number Y212572-01.

The analytical results in the following report were analyzed under the guidelines of EPA Methods. These methods are identified as follows; "SW" are defined in SW-846, "EPA" are defined in 40CFR part 136 and "SM" are defined in the most current revision of Standard Methods For the Examination of Water and Wastewater.

The analytical results apply specifically to the samples and analyses specified per the attached Chain of Custody. As such, this report shall not be reproduced except in full, without the written approval of Origin's laboratory.

Unless otherwise noted, the analytical results for all soil samples are reported on a wet weight basis. All analytical analyses were performed under NELAP guidelines unless noted by a data qualifier.

Any holding time exceedances, deviations from the method specifications or deviations from Origins Laboratory's Standard Operating Procedures are outlined in the case narrative.

Thank you for selecting Origins for your analytical needs. Please contact us with any questions concerning this report, or if we can help with anything at all.

Origins Laboratory, Inc.  
303.433.1322  
o-squad@oelabinc.com



1725 Elk Place, Denver, CO 80211 | Phone: 303.433.1322 | Fax: 303.265.9645

Eagle Environmental Consulting, Inc.

8000 W 44th Ave

Wheat Ridge CO 80033

Martin C Eckert III

Project Number: [none]

Project: Noble - Wells Ranch CGF

## CROSS REFERENCE REPORT

Sample ID	Laboratory ID	Matrix	Date Sampled	Date Received
WC-SS-01@0.5'	Y212572-01	Soil	December 27, 2022 14:00	12/27/2022 17:30
WC-SS-02@0.5'	Y212572-02	Soil	December 27, 2022 14:14	12/27/2022 17:30

Origins Laboratory, Inc.



*The results in this report apply to the samples analyzed in accordance with the chain of custody document. This analytical report must be reproduced in its entirety.*



Eagle Environmental Consulting, Inc.  
8000 W 44th Ave  
Wheat Ridge CO 80033

Martin C Eckert III  
Project Number: [none]  
Project: Noble - Wells Ranch CGF

1725 Elk Place | Denver, CO 80211 | Phone: 303.433.1322 | Fax: 303.265.9645

**ORIGINS** LABORATORY, INC

Client: Eagle Environmental Consulting  
Address: 8000 W 44th Ave  
Wheat Ridge, CO 80033  
Telephone Number: 303-433-0434  
Email Address: mce@eagle-env.co

Project Manager: Martin Eckert III  
Project Name: Wells Ranch CGF SR  
Project Number: 1212572  
Samples Collected By: SRM

www.originslaboratory.com

page 1 of 1

Sample ID Description	Date Sampled	Time Sampled	# of Containers	Preservative			Matrix			Analysis	Sample Instructions
				HCl	HNO <sub>3</sub>	Other	Groundwater	Soil	Air Summa Canister #		
MC-55-01@0.5'	12/27/12	1400	2	X							EC, SRM, OH by 1
MC-55-02@0.5'	12/27/12	1414	2	X							SRM, OH by 2
											SRM, OH by 3
											SRM, OH by 4
											SRM, OH by 5
											SRM, OH by 6
											SRM, OH by 7
											SRM, OH by 8
											SRM, OH by 9
											SRM, OH by 10

Relinquished By: Bryon W Date: 12/27/12 Time: 1730  
Received By: AE Date: 12/27/12 Time: 1730

Relinquished By: Bryon W Date: 12/27/12 Time: 1730  
Received By: AE Date: 12/27/12 Time: 1730

Turnaround Time:  
Same Day ☒ 24 Hr ☐  
48 Hr ☐ 72 Hr ☐  
Standard ☐

Temp Received: 11 to 16 Date Results Needed: 12/27/12

Signature: Bryon

Origins Laboratory, Inc.

*Bryon*

The results in this report apply to the samples analyzed in accordance with the chain of custody document. This analytical report must be reproduced in its entirety.

Eagle Environmental Consulting, Inc.  
8000 W 44th Ave  
Wheat Ridge CO 80033

Martin C Eckert III  
Project Number: [none]  
Project: Noble - Wells Ranch CGF

Origins Laboratory

F-012207-01-R1  
Effective Date: 01/09/12

**Sample Receipt Checklist**

Origins Work Order: Y712572

Client: Eagle

Client Project ID: Wells Ranch CGF

Checklist Completed by: DF

Date/time completed: 12/22/11

Shipped Via: HL  
(UPS, FedEx, Hand Delivered, Pick-up, etc.)

Airbill #: 121

Matrix(s) Received: (Check all that apply): ☒ Soil/Solid ☐ Water ☐ Other: \_\_\_\_\_

Cooler Number/Temperature: 1 / 2.0 °C 1 / \_\_\_\_\_ °C 1 / \_\_\_\_\_ °C (Describe)

Thermometer ID: TD04

Requirement Description	Yes	No	N/A	Comments (if any)
If samples require cooling, was the temperature between 0°C to ≤ 6°C <sup>(1)</sup> ?	<input checked="" type="checkbox"/>			
Is there ice present (document if blue ice is used)	<input checked="" type="checkbox"/>			
Are custody seals present on cooler? (if so, document in comments if they are signed and dated, broken or intact)		<input checked="" type="checkbox"/>		
Are custody seals present on each sample container? (if so, document in comments if they are signed and dated, broken or intact)		<input checked="" type="checkbox"/>		
Were all samples received intact <sup>(1)</sup> ?	<input checked="" type="checkbox"/>			
Was adequate sample volume provided <sup>(1)</sup> ?	<input checked="" type="checkbox"/>			
Are short holding time analytes or samples with HTs due within 48 hours present <sup>(1)</sup> ?		<input checked="" type="checkbox"/>		
Is a chain-of-custody (COC) present and filled out completely <sup>(1)</sup> ?	<input checked="" type="checkbox"/>			
Does the COC agree with the number and type of sample bottles received <sup>(1)</sup> ?	<input checked="" type="checkbox"/>			
Do the sample IDs on the bottle labels match the COC <sup>(1)</sup> ?	<input checked="" type="checkbox"/>			
Is the COC properly relinquished by the client with date and time recorded <sup>(1)</sup> ?	<input checked="" type="checkbox"/>			
For volatiles in water — is there headspace (> ¼ inch bubble) present? If yes, contact client and note in narrative.			<input checked="" type="checkbox"/>	
Are samples preserved that require preservation and was it checked <sup>(1)</sup> ? (note ID of confirmation instrument used in comments) / (preservation is not confirmed for sub-contracted analyses in order to insure sample integrity)/(pH < 2 for samples preserved with HNO <sub>3</sub> , HCL, H <sub>2</sub> SO <sub>4</sub> ) / (pH > 10 for samples preserved with NaAsO <sub>2</sub> +NaOH, ZnAc+NaOH)			<input checked="" type="checkbox"/>	
Additional Comments (if any):				

<sup>(1)</sup>If NO, then contact the client before proceeding with analysis and note date/time and person contacted as well as the corrective action to in the additional comments (above) and the case narrative.

Reviewed by (Project Manager)

Date/Time Reviewed

Origins Laboratory, Inc.

*J. Bynon*

The results in this report apply to the samples analyzed in accordance with the chain of custody document. This analytical report must be reproduced in its entirety.



Eagle Environmental Consulting, Inc.  
8000 W 44th Ave  
Wheat Ridge CO 80033

Martin C Eckert III  
Project Number: [none]  
Project: Noble - Wells Ranch CGF

WC-SS-01@0.5'

12/27/2022 2:00:00PM

Analyte	Result	Min Detection Limit	Reporting Limit	Units	Dilution	Batch	Prepared	Analyzed	Notes
---------	--------	---------------------	-----------------	-------	----------	-------	----------	----------	-------

Origins Laboratory, Inc.  
Y212572-01 (Soil)

## Boron (DTPA Sorbitol)

Boron	0.403	0.100	mg/L	1	B2L2803	12/28/2022	01/03/2023
-------	-------	-------	------	---	---------	------------	------------

## DRO/ORO by EPA 8015D

Diesel (C10-C28)	1160	25.0	mg/kg	1	B2L2727	12/27/2022	12/28/2022
Residual Range Organics (C28-C40)	425	100	"	"	"	"	"

Surrogate: o-Terphenyl	80.4 %	50-150	"	"	"
------------------------	--------	--------	---	---	---

## GBTEX+TMBs by 8260D

1,2,4-Trimethylbenzene	7.66	0.0500	mg/kg	25	B2L2728	12/27/2022	12/27/2022
1,3,5-Trimethylbenzene	3.00	0.0500	"	"	"	"	"
Benzene	1.65	0.0500	"	"	"	"	"
Ethylbenzene	2.08	0.0500	"	"	"	"	"
Toluene	9.78	0.0500	"	"	"	"	"
Xylenes, total	18.8	0.0500	"	"	"	"	"
Gasoline Range Hydrocarbons	340	50.0	"	250	"	"	12/28/2022

Surrogate: 1,2-Dichloroethane-d4	117 %	70-130	"	"	12/27/2022
Surrogate: Toluene-d8	110 %	70-130	"	"	"
Surrogate: 4-Bromofluorobenzene	82.2 %	70-130	"	"	"

Origins Laboratory, Inc.



The results in this report apply to the samples analyzed in accordance with the chain of custody document. This analytical report must be reproduced in its entirety.

Eagle Environmental Consulting, Inc.  
8000 W 44th Ave  
Wheat Ridge CO 80033

Martin C Eckert III  
Project Number: [none]  
Project: Noble - Wells Ranch CGF

WC-SS-01@0.5'

12/27/2022 2:00:00PM

Analyte	Result	Min Detection Limit	Reporting Limit	Units	Dilution	Batch	Prepared	Analyzed	Notes
---------	--------	---------------------	-----------------	-------	----------	-------	----------	----------	-------

Origins Laboratory, Inc.  
Y212572-01 (Soil)

## Metals by Saturated Paste by EPA 6010

Calcium	21.7	0.499	meq/L	10	[CALC]	12/28/2022	12/29/2022
Magnesium	9.64	0.823	"	"	"	"	"
Sodium	13.3	0.435	"	"	"	"	"

## PAH by 8270D SIM

1-Methylnaphthalene	0.905	0.0109	0.0201	mg/Kg	10	L656721	01/04/2023	01/04/2023
2-Methylnaphthalene	1.64	0.0194	0.0201	"	"	"	"	"
Acenaphthene	0.0924	0.00304	0.0067	"	"	"	"	"
Anthracene	ND	0.00334	0.0067	"	"	"	"	"
Benzo(a)anthracene	ND	0.00493	0.0067	"	"	"	"	"
Benzo(a)pyrene	ND	0.00468	0.0067	"	"	"	"	"
Benzo(b)fluoranthene	ND	0.00585	0.0067	"	"	"	"	"
Benzo(k)fluoranthene	ND	0.00437	0.0067	"	"	"	"	"
Chrysene	0.0345	0.00624	0.0067	"	"	"	"	"
Dibenz(a,h)anthracene	ND	0.00614	0.0067	"	"	"	"	"
Fluoranthene	ND	0.00394	0.0067	"	"	"	"	"
Fluorene	0.125	0.00286	0.0067	"	"	"	"	"
Indeno(1,2,3-cd)pyrene	ND	0.00627	0.0067	"	"	"	"	"
Naphthalene	0.447	0.0145	0.0201	"	"	"	"	"
Pyrene	0.00823	0.00643	0.0067	"	"	"	"	"
Surrogate: 2-Fluorobiphenyl	55.4 %		33-115			"	"	"
Surrogate: 4-Terphenyl-d14	64.8 %		33-122			"	"	"

Origins Laboratory, Inc.



The results in this report apply to the samples analyzed in accordance with the chain of custody document. This analytical report must be reproduced in its entirety.



Eagle Environmental Consulting, Inc.  
8000 W 44th Ave  
Wheat Ridge CO 80033

Martin C Eckert III  
Project Number: [none]  
Project: Noble - Wells Ranch CGF

WC-SS-01@0.5'

12/27/2022 2:00:00PM

Analyte	Result	Min Detection Limit	Reporting Limit	Units	Dilution	Batch	Prepared	Analyzed	Notes
---------	--------	---------------------	-----------------	-------	----------	-------	----------	----------	-------

Waypoint Analytical, LLC.  
Y212572-01 (Soil)

## PAH by 8270D SIM

Surrogate: Nitrobenzene-d5	56.6 %	29-110	L6567 21	01/04/2023	01/04/2023
----------------------------	--------	--------	-------------	------------	------------

## pH in Soil by 9045D

pH	7.71	pH Units	1	B2L2808	12/28/2022	12/29/2022
----	------	----------	---	---------	------------	------------

## SAR by 20B Saturated Paste

SAR	3.37	SAR	1	B2L2806	12/28/2022	12/29/2022
-----	------	-----	---	---------	------------	------------

## Specific Conductance Mod. 9050A

Specific Conductance (EC)	3.34	0.00500	mmhos/cm	1	B2L2808	12/28/2022	12/29/2022
---------------------------	------	---------	----------	---	---------	------------	------------

## Table 915 metals by EPA 6020B

Arsenic	2.64	0.0872	mg/kg	10	B2L2817	12/29/2022	12/29/2022
Barium	76.5	8.72	"	"	"	"	"
Cadmium	ND	0.0872	"	"	"	"	"
Copper	13.8	8.72	"	"	"	"	"
Lead	ND	8.72	"	"	"	"	"
Nickel	9.17	8.72	"	"	"	"	"
Selenium	ND	0.0872	"	"	"	"	"
Silver	ND	0.0872	"	"	"	"	"

Origins Laboratory, Inc.



The results in this report apply to the samples analyzed in accordance with the chain of custody document. This analytical report must be reproduced in its entirety.

Eagle Environmental Consulting, Inc.  
8000 W 44th Ave  
Wheat Ridge CO 80033

Martin C Eckert III  
Project Number: [none]  
Project: Noble - Wells Ranch CGF

WC-SS-01@0.5'

12/27/2022 2:00:00PM

Analyte	Result	Min Detection Limit	Reporting Limit	Units	Dilution	Batch	Prepared	Analyzed	Notes
---------	--------	------------------------	--------------------	-------	----------	-------	----------	----------	-------

Origins Laboratory, Inc.  
Y212572-01 (Soil)

### Table 915 metals by EPA 6020B

Zinc	ND		87.2	mg/kg	10	B2L2817	12/29/2022	12/29/2022	
------	----	--	------	-------	----	---------	------------	------------	--

### Total Metals by 7196A

Chromium, Hexavalent	ND	0.253	0.519	mg/Kg	1	L656746	12/27/2022	01/04/2023	
----------------------	----	-------	-------	-------	---	---------	------------	------------	--

Origins Laboratory, Inc.



The results in this report apply to the samples analyzed in accordance with the chain of custody document. This analytical report must be reproduced in its entirety.



Eagle Environmental Consulting, Inc.  
8000 W 44th Ave  
Wheat Ridge CO 80033

Martin C Eckert III  
Project Number: [none]  
Project: Noble - Wells Ranch CGF

WC-SS-02@0.5'

12/27/2022 2:14:00PM

Analyte	Result	Min Detection Limit	Reporting Limit	Units	Dilution	Batch	Prepared	Analyzed	Notes
---------	--------	---------------------	-----------------	-------	----------	-------	----------	----------	-------

Origins Laboratory, Inc.  
Y212572-02 (Soil)

## Boron (DTPA Sorbitol)

Boron	0.111	0.0990	mg/L	1	B2L2803	12/28/2022	01/03/2023
-------	-------	--------	------	---	---------	------------	------------

## DRO/ORO by EPA 8015D

Diesel (C10-C28)	ND	25.0	mg/kg	1	B2L2727	12/27/2022	12/28/2022	U
Residual Range Organics (C28-C40)	ND	100	"	"	"	"	"	U

Surrogate: o-Terphenyl	76.6 %	50-150	"	"	"
------------------------	--------	--------	---	---	---

## GBTEX+TMBs by 8260D

1,2,4-Trimethylbenzene	0.0158	0.00200	mg/kg	1	B2L2728	12/27/2022	12/27/2022
1,3,5-Trimethylbenzene	0.00512	0.00200	"	"	"	"	"
Benzene	ND	0.00200	"	"	"	"	U
Ethylbenzene	ND	0.00200	"	"	"	"	U
Toluene	0.0110	0.00200	"	"	"	"	"
Xylenes, total	0.0258	0.00200	"	"	"	"	"
Gasoline Range Hydrocarbons	211	50.0	"	250	"	"	12/28/2022

Surrogate: 1,2-Dichloroethane-d4	125 %	70-130	"	"	12/27/2022
Surrogate: Toluene-d8	107 %	70-130	"	"	"

Origins Laboratory, Inc.



The results in this report apply to the samples analyzed in accordance with the chain of custody document. This analytical report must be reproduced in its entirety.

Eagle Environmental Consulting, Inc.  
8000 W 44th Ave  
Wheat Ridge CO 80033

Martin C Eckert III  
Project Number: [none]  
Project: Noble - Wells Ranch CGF

WC-SS-02@0.5'

12/27/2022 2:14:00PM

Analyte	Result	Min Detection Limit	Reporting Limit	Units	Dilution	Batch	Prepared	Analyzed	Notes
---------	--------	---------------------	-----------------	-------	----------	-------	----------	----------	-------

Origins Laboratory, Inc.  
Y212572-02 (Soil)

## GBTEX+TMBs by 8260D

Surrogate: 4-Bromofluorobenzene	90.9 %	70-130	B2L27 28	12/27/2022	12/27/2022
---------------------------------	--------	--------	-------------	------------	------------

## Metals by Saturated Paste by EPA 6010

Calcium	1.20	0.499	meq/L	10	[CALC]	12/28/2022	12/29/2022
Magnesium	ND	0.823	"	"	"	"	"
Sodium	ND	0.435	"	"	"	"	"

## PAH by 8270D SIM

1-Methylnaphthalene	0.0132	0.00109	0.00201	mg/Kg	1	L656721	01/04/2023	01/04/2023
2-Methylnaphthalene	0.0257	0.00194	0.00201	"	"	"	"	"
Acenaphthene	0.000997	0.000304	0.00067	"	"	"	"	"
Anthracene	ND	0.000334	0.00067	"	"	"	"	"
Benzo(a)anthracene	ND	0.000493	0.00067	"	"	"	"	"
Benzo(a)pyrene	ND	0.000468	0.00067	"	"	"	"	"
Benzo(b)fluoranthene	ND	0.000585	0.00067	"	"	"	"	"
Benzo(k)fluoranthene	ND	0.000437	0.00067	"	"	"	"	"
Chrysene	0.000776	0.000624	0.00067	"	"	"	"	"
Dibenz(a,h)anthracene	ND	0.000614	0.00067	"	"	"	"	"
Fluoranthene	ND	0.000394	0.00067	"	"	"	"	"
Fluorene	0.00147	0.000286	0.00067	"	"	"	"	"

Origins Laboratory, Inc.



The results in this report apply to the samples analyzed in accordance with the chain of custody document. This analytical report must be reproduced in its entirety.



Eagle Environmental Consulting, Inc.  
8000 W 44th Ave  
Wheat Ridge CO 80033

Martin C Eckert III  
Project Number: [none]  
Project: Noble - Wells Ranch CGF

WC-SS-02@0.5'

12/27/2022 2:14:00PM

Analyte	Result	Min Detection Limit	Reporting Limit	Units	Dilution	Batch	Prepared	Analyzed	Notes
---------	--------	---------------------	-----------------	-------	----------	-------	----------	----------	-------

Waypoint Analytical, LLC.  
Y212572-02 (Soil)

## PAH by 8270D SIM

Indeno(1,2,3-cd)pyrene	ND	0.000627	0.00067	mg/Kg	1	L656721	01/04/2023	01/04/2023
Naphthalene	0.00678	0.00145	0.00201	"	"	"	"	"
Pyrene	ND	0.000643	0.00067	"	"	"	"	"

Surrogate: 2-Fluorobiphenyl	48.2 %		33-115			"	"	"
Surrogate: 4-Terphenyl-d14	54.2 %		33-122			"	"	"
Surrogate: Nitrobenzene-d5	50.6 %		29-110			"	"	"

## pH in Soil by 9045D

pH	7.62			pH Units	1	B2L2808	12/28/2022	12/29/2022
----	------	--	--	----------	---	---------	------------	------------

## SAR by 20B Saturated Paste

SAR	0.179			SAR	1	B2L2806	12/28/2022	12/29/2022
-----	-------	--	--	-----	---	---------	------------	------------

## Specific Conductance Mod. 9050A

Specific Conductance (EC)	0.272		0.00500	mmhos/cm	1	B2L2808	12/28/2022	12/29/2022
---------------------------	-------	--	---------	----------	---	---------	------------	------------

## Table 915 metals by EPA 6020B

Arsenic	2.95		0.0911	mg/kg	10	B2L2817	12/29/2022	12/29/2022
Barium	66.9		9.11	"	"	"	"	"

Origins Laboratory, Inc.



The results in this report apply to the samples analyzed in accordance with the chain of custody document. This analytical report must be reproduced in its entirety.

Eagle Environmental Consulting, Inc.  
8000 W 44th Ave  
Wheat Ridge CO 80033

Martin C Eckert III  
Project Number: [none]  
Project: Noble - Wells Ranch CGF

WC-SS-02@0.5'

12/27/2022 2:14:00PM

Analyte	Result	Min Detection Limit	Reporting Limit	Units	Dilution	Batch	Prepared	Analyzed	Notes
---------	--------	------------------------	--------------------	-------	----------	-------	----------	----------	-------

Origins Laboratory, Inc.  
Y212572-02 (Soil)

### Table 915 metals by EPA 6020B

Cadmium	0.104		0.0911	mg/kg	10	B2L2817	12/29/2022	12/29/2022
Copper	ND		9.11	"	"	"	"	"
Lead	ND		9.11	"	"	"	"	"
Nickel	ND		9.11	"	"	"	"	"
Selenium	ND		0.0911	"	"	"	"	"
Silver	ND		0.0911	"	"	"	"	"
Zinc	ND		91.1	"	"	"	"	"

### Total Metals by 7196A

Chromium, Hexavalent	ND	0.245	0.503	mg/Kg	1	L656746	12/27/2022	01/04/2023
----------------------	----	-------	-------	-------	---	---------	------------	------------

Origins Laboratory, Inc.



The results in this report apply to the samples analyzed in accordance with the chain of custody document. This analytical report must be reproduced in its entirety.

Eagle Environmental Consulting, Inc.  
8000 W 44th Ave  
Wheat Ridge CO 80033

Martin C Eckert III  
Project Number: [none]  
Project: Noble - Wells Ranch CGF

Extractable Petroleum Hydrocarbons by 8015D - Quality Control  
Origins Laboratory, Inc.

Analyte	Result	Reporting Limit	Units	Spike Level	Source Result	%REC	%REC Limits	RPD	RPD Limit	Notes
Batch B2L2727 - EPA 3580										
Blank (B2L2727-BLK1)					Prepared: 12/27/2022 Analyzed: 12/27/2022					
Diesel (C10-C28)	ND	25.0	mg/kg							U
Residual Range Organics (C28-C40)	ND	100	"							U
Surrogate: o-Terphenyl	19		"	24.9		75.8	50-150			

Origins Laboratory, Inc.



The results in this report apply to the samples analyzed in accordance with the chain of custody document. This analytical report must be reproduced in its entirety.



Eagle Environmental Consulting, Inc.  
8000 W 44th Ave  
Wheat Ridge CO 80033

Martin C Eckert III  
Project Number: [none]  
Project: Noble - Wells Ranch CGF

**Extractable Petroleum Hydrocarbons by 8015D - Quality Control**  
**Origins Laboratory, Inc.**

Analyte	Result	Reporting Limit	Units	Spike Level	Source Result	%REC	%REC Limits	RPD	RPD Limit	Notes
---------	--------	-----------------	-------	-------------	---------------	------	-------------	-----	-----------	-------

Batch B2L2727 - EPA 3580

**LCS (B2L2727-BS1)**

Prepared: 12/27/2022 Analyzed: 12/27/2022

Diesel (C10-C28)	894	50.0	mg/kg	1000		89.4	70-130			
Residual Range Organics (C28-C40)	922	200	"	1000		92.2	70-130			
Surrogate: o-Terphenyl	38		"	49.8		76.1	50-150			

Origins Laboratory, Inc.



*The results in this report apply to the samples analyzed in accordance with the chain of custody document. This analytical report must be reproduced in its entirety.*

Eagle Environmental Consulting, Inc.  
8000 W 44th Ave  
Wheat Ridge CO 80033

Martin C Eckert III  
Project Number: [none]  
Project: Noble - Wells Ranch CGF

**Extractable Petroleum Hydrocarbons by 8015D - Quality Control**  
**Origins Laboratory, Inc.**

Analyte	Result	Reporting Limit	Units	Spike Level	Source Result	%REC	%REC Limits	RPD	RPD Limit	Notes
---------	--------	-----------------	-------	-------------	---------------	------	-------------	-----	-----------	-------

Batch B2L2727 - EPA 3580

Matrix Spike (B2L2727-MS1)		Source: Y212569-08			Prepared: 12/27/2022 Analyzed: 12/27/2022					
Diesel (C10-C28)	1080	50.0	mg/kg	1000	51.8	102	70-130			
Residual Range Organics (C28-C40)	1030	200	"	1000	ND	103	70-130			
Surrogate: o-Terphenyl	27		"	49.8		54.7	50-150			

Origins Laboratory, Inc.



*The results in this report apply to the samples analyzed in accordance with the chain of custody document. This analytical report must be reproduced in its entirety.*

Eagle Environmental Consulting, Inc.  
8000 W 44th Ave  
Wheat Ridge CO 80033

Martin C Eckert III  
Project Number: [none]  
Project: Noble - Wells Ranch CGF

## Extractable Petroleum Hydrocarbons by 8015D - Quality Control Origins Laboratory, Inc.

Analyte	Result	Reporting Limit	Units	Spike Level	Source Result	%REC	%REC Limits	RPD	RPD Limit	Notes
Batch B2L2727 - EPA 3580										
Matrix Spike Dup (B2L2727-MSD1)		Source: Y212569-08			Prepared: 12/27/2022 Analyzed: 12/27/2022					
Diesel (C10-C28)	1060	50.0	mg/kg	1000	51.8	101	70-130	1.16	35	
Residual Range Organics (C28-C40)	1040	200	"	1000	ND	104	70-130	1.60	35	
Surrogate: o-Terphenyl	35		"	49.8		69.5	50-150			

Origins Laboratory, Inc.



The results in this report apply to the samples analyzed in accordance with the chain of custody document. This analytical report must be reproduced in its entirety.



Eagle Environmental Consulting, Inc.  
8000 W 44th Ave  
Wheat Ridge CO 80033

Martin C Eckert III  
Project Number: [none]  
Project: Noble - Wells Ranch CGF

## Extractable Petroleum Hydrocarbons by 8015D - Quality Control

### Origins Laboratory, Inc.

Analyte	Result	Reporting Limit	Units	Spike Level	Source Result	%REC	%REC Limits	RPD	RPD Limit	Notes
<b>Batch B2L2728 - EPA 5030 (soil)</b>										
<b>Blank (B2L2728-BLK1)</b>					Prepared: 12/27/2022 Analyzed: 12/27/2022					
1,2,4-Trimethylbenzene	ND	0.00200	mg/kg							U
1,3,5-Trimethylbenzene	ND	0.00200	"							U
Benzene	ND	0.00200	"							U
Ethylbenzene	ND	0.00200	"							U
Naphthalene	ND	0.00380	"							U
Toluene	ND	0.00200	"							U
Xylenes, total	ND	0.00200	"							U
Gasoline Range Hydrocarbons	ND	0.200	"							U
Surrogate: 1,2-Dichloroethane-d4	0.15		"	0.125	121		70-130			
Surrogate: Toluene-d8	0.13		"	0.125	107		70-130			
Surrogate: 4-Bromofluorobenzene	0.12		"	0.125	94.1		70-130			

Origins Laboratory, Inc.



The results in this report apply to the samples analyzed in accordance with the chain of custody document. This analytical report must be reproduced in its entirety.

Eagle Environmental Consulting, Inc.  
8000 W 44th Ave  
Wheat Ridge CO 80033

Martin C Eckert III  
Project Number: [none]  
Project: Noble - Wells Ranch CGF

**Volatile Organic Compounds by GC/MS SW846 8260D - Quality Control**  
**Origins Laboratory, Inc.**

Analyte	Result	Reporting Limit	Units	Spike Level	Source Result	%REC	%REC Limits	RPD	RPD Limit	Notes
---------	--------	-----------------	-------	-------------	---------------	------	-------------	-----	-----------	-------

**Batch B2L2728 - EPA 5030 (soil)**

**LCS (B2L2728-BS1)**

Prepared: 12/27/2022 Analyzed: 12/27/2022

1,2,4-Trimethylbenzene	0.0854	0.00200	mg/kg	0.100		85.4	70-130			
1,3,5-Trimethylbenzene	0.0856	0.00200	"	0.100		85.6	70-130			
Benzene	0.102	0.00200	"	0.100		102	70-130			
Ethylbenzene	0.101	0.00200	"	0.100		101	70-130			
Naphthalene	0.104	0.00380	"	0.100		104	70-130			
Toluene	0.101	0.00200	"	0.100		101	70-130			
o-Xylene	0.0928	0.00200	"	0.100		92.8	70-130			
m,p-Xylene	0.192	0.00400	"	0.200		96.1	70-130			
Surrogate: 1,2-Dichloroethane-d4	0.14		"	0.125		115	70-130			
Surrogate: Toluene-d8	0.13		"	0.125		108	70-130			
Surrogate: 4-Bromofluorobenzene	0.13		"	0.125		101	70-130			

Origins Laboratory, Inc.



*The results in this report apply to the samples analyzed in accordance with the chain of custody document. This analytical report must be reproduced in its entirety.*

Eagle Environmental Consulting, Inc.  
8000 W 44th Ave  
Wheat Ridge CO 80033

Martin C Eckert III  
Project Number: [none]  
Project: Noble - Wells Ranch CGF

## Volatile Organic Compounds by GC/MS SW846 8260D - Quality Control

### Origins Laboratory, Inc.

Analyte	Result	Reporting Limit	Units	Spike Level	Source Result	%REC	%REC Limits	RPD	RPD Limit	Notes
---------	--------	-----------------	-------	-------------	---------------	------	-------------	-----	-----------	-------

#### Batch B2L2728 - EPA 5030 (soil)

Matrix Spike (B2L2728-MS1)		Source: Y212572-02			Prepared: 12/27/2022 Analyzed: 12/27/2022					
1,2,4-Trimethylbenzene	0.0910	0.00200	mg/kg	0.100	0.0158	75.3	70-130			
1,3,5-Trimethylbenzene	0.0843	0.00200	"	0.100	0.00512	79.1	70-130			
Benzene	0.0941	0.00200	"	0.100	0.000960	93.1	70-130			
Ethylbenzene	0.0908	0.00200	"	0.100	ND	90.8	70-130			
Naphthalene	0.112	0.00380	"	0.100	0.00254	109	70-130			
Toluene	0.0954	0.00200	"	0.100	0.0110	84.4	70-130			
o-Xylene	0.0905	0.00200	"	0.100	0.00790	82.6	70-130			
m,p-Xylene	0.185	0.00400	"	0.200	0.0179	83.8	70-130			
Surrogate: 1,2-Dichloroethane-d4	0.15		"	0.125		123	70-130			
Surrogate: Toluene-d8	0.13		"	0.125		104	70-130			
Surrogate: 4-Bromofluorobenzene	0.12		"	0.125		99.7	70-130			

Origins Laboratory, Inc.



The results in this report apply to the samples analyzed in accordance with the chain of custody document. This analytical report must be reproduced in its entirety.



Eagle Environmental Consulting, Inc.  
8000 W 44th Ave  
Wheat Ridge CO 80033

Martin C Eckert III  
Project Number: [none]  
Project: Noble - Wells Ranch CGF

**Volatile Organic Compounds by GC/MS SW846 8260D - Quality Control**  
**Origins Laboratory, Inc.**

Analyte	Result	Reporting Limit	Units	Spike Level	Source Result	%REC	%REC Limits	RPD	RPD Limit	Notes
<b>Batch B2L2728 - EPA 5030 (soil)</b>										
<b>Matrix Spike Dup (B2L2728-MSD1)</b>		<b>Source: Y212572-02</b>			Prepared: 12/27/2022 Analyzed: 12/27/2022					
1,2,4-Trimethylbenzene	0.101	0.00200	mg/kg	0.100	0.0158	84.7	70-130	9.88	20	
1,3,5-Trimethylbenzene	0.0753	0.00200	"	0.100	0.00512	70.1	70-130	11.3	20	
Benzene	0.0871	0.00200	"	0.100	0.000960	86.1	70-130	7.71	20	
Ethylbenzene	0.0778	0.00200	"	0.100	ND	77.8	70-130	15.4	20	
Naphthalene	0.0915	0.00380	"	0.100	0.00254	89.0	70-130	19.7	20	
Toluene	0.0866	0.00200	"	0.100	0.0110	75.6	70-130	9.61	20	
o-Xylene	0.0847	0.00200	"	0.100	0.00790	76.8	70-130	6.65	20	
m,p-Xylene	0.174	0.00400	"	0.200	0.0179	77.8	70-130	6.65	20	
Surrogate: 1,2-Dichloroethane-d4	0.16		"	0.125		126	70-130			
Surrogate: Toluene-d8	0.13		"	0.125		104	70-130			
Surrogate: 4-Bromofluorobenzene	0.12		"	0.125		96.4	70-130			

Origins Laboratory, Inc.



The results in this report apply to the samples analyzed in accordance with the chain of custody document. This analytical report must be reproduced in its entirety.

Eagle Environmental Consulting, Inc.  
8000 W 44th Ave  
Wheat Ridge CO 80033

Martin C Eckert III  
Project Number: [none]  
Project: Noble - Wells Ranch CGF

## Volatile Organic Compounds by GC/MS SW846 8260D - Quality Control

### Origins Laboratory, Inc.

Analyte	Result	Reporting Limit	Units	Spike Level	Source Result	%REC	%REC Limits	RPD	RPD Limit	Notes
---------	--------	-----------------	-------	-------------	---------------	------	-------------	-----	-----------	-------

## Metals by EPA 6000/7000 Series Methods - Quality Control

### Origins Laboratory, Inc.

Analyte	Result	Reporting Limit	Units	Spike Level	Source Result	%REC	%REC Limits	RPD	RPD Limit	Notes
---------	--------	-----------------	-------	-------------	---------------	------	-------------	-----	-----------	-------

#### Batch B2L2817 - EPA 3050B

#### Blank (B2L2817-BLK1)

Prepared: 12/29/2022 Analyzed: 12/29/2022

Arsenic	ND	0.000100	mg/kg
Barium	ND	0.0100	"
Cadmium	ND	0.000100	"
Copper	ND	0.0100	"
Lead	ND	0.0100	"
Nickel	ND	0.0100	"
Selenium	ND	0.000100	"
Silver	ND	0.000100	"
Zinc	ND	0.100	"

#### LCS (B2L2817-BS1)

Prepared: 12/29/2022 Analyzed: 12/29/2022

Arsenic	0.0510	0.000100	mg/kg	0.0500	102	80-120
Barium	4.96	0.0100	"	5.00	99.1	80-120
Cadmium	0.0518	0.000100	"	0.0500	104	80-120
Copper	0.520	0.0100	"	0.500	104	80-120
Lead	0.0515	0.0100	"	0.0500	103	80-120
Nickel	0.0526	0.0100	"	0.0500	105	80-120
Selenium	0.0500	0.000100	"	0.0500	99.9	80-120
Silver	0.0508	0.000100	"	0.0500	102	80-120
Zinc	0.500	0.100	"	0.500	100	80-120

#### Matrix Spike (B2L2817-MS1)

Source: Y212591-01

Prepared: 12/29/2022 Analyzed: 12/29/2022

Origins Laboratory, Inc.



The results in this report apply to the samples analyzed in accordance with the chain of custody document. This analytical report must be reproduced in its entirety.

Eagle Environmental Consulting, Inc.  
8000 W 44th Ave  
Wheat Ridge CO 80033

Martin C Eckert III  
Project Number: [none]  
Project: Noble - Wells Ranch CGF

**Metals by EPA 6000/7000 Series Methods - Quality Control**  
**Origins Laboratory, Inc.**

Analyte	Result	Reporting Limit	Units	Spike Level	Source Result	%REC	%REC Limits	RPD	RPD Limit	Notes
<b>Batch B2L2817 - EPA 3050B</b>										
<b>Matrix Spike (B2L2817-MS1)</b>		<b>Source: Y212591-01</b>			Prepared: 12/29/2022 Analyzed: 12/29/2022					
Arsenic	10.1	0.0945	mg/kg	4.73	2.91	153	75-125			QM-07
Barium	653	9.45	"	473	86.9	120	75-125			
Cadmium	5.69	0.0945	"	4.73	0.111	118	75-125			
Copper	60.3	9.45	"	47.3	7.27	112	75-125			
Lead	12.0	9.45	"	4.73	5.28	141	75-125			QM-07
Nickel	12.9	9.45	"	4.73	7.74	110	75-125			
Selenium	5.15	0.0945	"	4.73	0.254	103	75-125			
Silver	5.53	0.0945	"	4.73	0.0283	116	75-125			
Zinc	81.8	94.5	"	47.3	27.9	114	75-125			
<b>Matrix Spike Dup (B2L2817-MSD1)</b>		<b>Source: Y212591-01</b>			Prepared: 12/29/2022 Analyzed: 12/29/2022					
Arsenic	7.88	0.0979	mg/kg	4.89	2.91	102	75-125	25.1	20	QR-DUP
Barium	612	9.79	"	489	86.9	107	75-125	6.47	20	
Cadmium	5.47	0.0979	"	4.89	0.111	110	75-125	3.93	20	
Copper	58.3	9.79	"	48.9	7.27	104	75-125	3.32	20	
Lead	10.8	9.79	"	4.89	5.28	113	75-125	10.0	20	
Nickel	12.3	9.79	"	4.89	7.74	92.6	75-125	5.25	20	
Selenium	4.60	0.0979	"	4.89	0.254	88.8	75-125	11.2	20	
Silver	5.17	0.0979	"	4.89	0.0283	105	75-125	6.75	20	
Zinc	82.6	97.9	"	48.9	27.9	112	75-125	0.974	20	

Origins Laboratory, Inc.



*The results in this report apply to the samples analyzed in accordance with the chain of custody document. This analytical report must be reproduced in its entirety.*



Eagle Environmental Consulting, Inc.  
8000 W 44th Ave  
Wheat Ridge CO 80033

Martin C Eckert III  
Project Number: [none]  
Project: Noble - Wells Ranch CGF

## Classical Chemistry Parameters - Quality Control

### Origins Laboratory, Inc.

Analyte	Result	Reporting Limit	Units	Spike Level	Source Result	%REC	%REC Limits	RPD	RPD Limit	Notes
---------	--------	-----------------	-------	-------------	---------------	------	-------------	-----	-----------	-------

#### Batch B2L2803 - DTPA Sorbitol Preparation

##### Blank (B2L2803-BLK1)

Prepared: 12/28/2022 Analyzed: 12/29/2022

Boron ND 0.100 mg/L

##### Duplicate (B2L2803-DUP1)

Source: Y212494-02

Prepared: 12/28/2022 Analyzed: 12/29/2022

Boron 7.28 0.101 mg/L 7.42 1.80 50

#### Batch B2L2806 - Saturated Paste Metals

##### Blank (B2L2806-BLK1)

Prepared: 12/28/2022 Analyzed: 12/29/2022

Calcium PPM ND 10.0 mg/L

SAR 0.00 SAR

Magnesium PPM ND 10.0 mg/L

Sodium PPM ND 10.0 "

##### Duplicate (B2L2806-DUP1)

Source: Y212569-01

Prepared: 12/28/2022 Analyzed: 12/29/2022

Calcium PPM 916 10.0 mg/L 817 11.5 50

SAR 0.00 SAR 2.39 200 200

Magnesium PPM 324 10.0 mg/L 275 16.7 50

Sodium PPM 369 10.0 " 309 17.7 50

Origins Laboratory, Inc.



The results in this report apply to the samples analyzed in accordance with the chain of custody document. This analytical report must be reproduced in its entirety.

Eagle Environmental Consulting, Inc.  
8000 W 44th Ave  
Wheat Ridge CO 80033

Martin C Eckert III  
Project Number: [none]  
Project: Noble - Wells Ranch CGF

## Saturated Paste - Quality Control Origins Laboratory, Inc.

Analyte	Result	Reporting Limit	Units	Spike Level	Source Result	%REC	%REC Limits	RPD	RPD Limit	Notes
<b>Batch B2L2808 - Saturated Paste pH/EC</b>										
<b>Blank (B2L2808-BLK1)</b>					Prepared: 12/28/2022 Analyzed: 12/29/2022					
Specific Conductance (EC)	ND	0.00500	mmhos/cm							
<b>Duplicate (B2L2808-DUP1)</b>					Source: Y212569-01 Prepared: 12/28/2022 Analyzed: 12/29/2022					
pH	7.65		pH Units		7.75			1.30	25	
Specific Conductance (EC)	7.83	0.00500	mmhos/cm		6.81			13.9	25	

Origins Laboratory, Inc.



*The results in this report apply to the samples analyzed in accordance with the chain of custody document. This analytical report must be reproduced in its entirety.*

Eagle Environmental Consulting, Inc.  
8000 W 44th Ave  
Wheat Ridge CO 80033

Martin C Eckert III  
Project Number: [none]  
Project: Noble - Wells Ranch CGF

**PAH by 8270D SIM - Quality Control**  
**Waypoint Analytical, LLC.**

Analyte	Result	Reporting Limit	Units	Spike Level	Source Result	%REC	%REC Limits	RPD	RPD Limit	Notes
---------	--------	-----------------	-------	-------------	---------------	------	-------------	-----	-----------	-------

**Batch L656721 - 3550B**

MSD (L 88331-MSD-L656721)		Source: 88331			Prepared: 01/04/2023 Analyzed: 01/04/2023					
Fluoranthene	0.104	0.00067	mg/Kg	0.162	<0.000394	64.1	30-130	6.5	30	
Pyrene	0.1	0.00067	"	0.162	<0.000643	61.7	30-130	8.6	30	
Naphthalene	0.11	0.00201	"	0.162	<0.00145	67.9	30-130	1.8	30	
2-Methylnaphthalene	0.0999	0.00201	"	0.162	<0.00194	61.6	30-130	2	30	
Indeno(1,2,3-cd)pyrene	0.0913	0.00067	"	0.162	<0.000627	56.3	30-130	43.4	30	*
Fluorene	0.113	0.00067	"	0.162	<0.000286	69.7	30-130	3.4	30	
Acenaphthene	0.102	0.00067	"	0.162	<0.000304	62.9	30-130	1.9	30	
Anthracene	0.111	0.00067	"	0.162	<0.000334	68.5	30-130	4.4	30	
Benzo(a)pyrene	0.095	0.00067	"	0.162	<0.000468	58.6	30-130	16.4	30	
Benzo(b)fluoranthene	0.0637	0.00067	"	0.162	<0.000585	39.3	30-130	46.2	30	*
Benzo(k)fluoranthene	0.0717	0.00067	"	0.162	<0.000437	44.2	30-130	30.6	30	*
Chrysene	0.107	0.00067	"	0.162	<0.000624	66	30-130	8.9	30	
Dibenz(a,h)anthracene	0.0987	0.00067	"	0.162	<0.000614	60.9	30-130	46.7	30	*
Benzo(a)anthracene	0.102	0.00067	"	0.162	<0.000493	62.9	30-130	7.5	30	
1-Methylnaphthalene	0.0978	0.00201	"	0.162	<0.00109	60.3	30-130	1.1	30	
Surrogate: Nitrobenzene-d5	56.9		"	0.325	158	56.9	29-110			
Surrogate: 2-Fluorobiphenyl	50.4		"	0.325	139	50.4	33-115			
Surrogate: 4-Terphenyl-d14	51.3		"	0.325	142	51.3	33-122			

MS (L 88331-MS-L656721)		Source: 88331			Prepared: 01/04/2023 Analyzed: 01/04/2023					
Naphthalene	0.112	0.00201	mg/Kg	0.163	<0.00145	68.7	30-130			
Benzo(b)fluoranthene	0.102	0.00067	"	0.163	<0.000585	62.5	30-130			
Pyrene	0.109	0.00067	"	0.163	<0.000643	66.8	30-130			
Benzo(k)fluoranthene	0.0977	0.00067	"	0.163	<0.000437	59.9	30-130			
Chrysene	0.117	0.00067	"	0.163	<0.000624	71.7	30-130			
Dibenz(a,h)anthracene	0.159	0.00067	"	0.163	<0.000614	97.5	30-130			
Fluoranthene	0.111	0.00067	"	0.163	<0.000394	68	30-130			

Origins Laboratory, Inc.



The results in this report apply to the samples analyzed in accordance with the chain of custody document. This analytical report must be reproduced in its entirety.



Eagle Environmental Consulting, Inc.  
8000 W 44th Ave  
Wheat Ridge CO 80033

Martin C Eckert III  
Project Number: [none]  
Project: Noble - Wells Ranch CGF

**PAH by 8270D SIM - Quality Control**  
**Waypoint Analytical, LLC.**

Analyte	Result	Reporting Limit	Units	Spike Level	Source Result	%REC	%REC Limits	RPD	RPD Limit	Notes
---------	--------	-----------------	-------	-------------	---------------	------	-------------	-----	-----------	-------

**Batch L656721 - 3550B**

MS (L 88331-MS-L656721)		Source: 88331			Prepared: 01/04/2023 Analyzed: 01/04/2023					
Indeno(1,2,3-cd)pyrene	0.142	0.00067	mg/Kg	0.163	<0.000627	87.1	30-130			
Anthracene	0.116	0.00067	"	0.163	<0.000334	71.1	30-130			
Fluorene	0.117	0.00067	"	0.163	<0.000286	71.7	30-130			
Benzo(a)pyrene	0.112	0.00067	"	0.163	<0.000468	68.7	30-130			
Acenaphthene	0.104	0.00067	"	0.163	<0.000304	63.8	30-130			
2-Methylnaphthalene	0.102	0.00201	"	0.163	<0.00194	62.5	30-130			
1-Methylnaphthalene	0.0989	0.00201	"	0.163	<0.00109	60.6	30-130			
Benzo(a)anthracene	0.11	0.00067	"	0.163	<0.000493	67.4	30-130			
Surrogate: Nitrobenzene-d5	57.4		"	0.327	158	57.4	29-110			
Surrogate: 4-Terphenyl-d14	53.2		"	0.327	142	53.2	33-122			
Surrogate: 2-Fluorobiphenyl	50.1		"	0.327	139	50.1	33-115			

LCS (LCS-L656721)		Prepared: 01/04/2023 Analyzed: 01/04/2023								
Benzo(b)fluoranthene	0.111	0.00067	mg/Kg	0.167		66.4	30-130			
Benzo(k)fluoranthene	0.0996	0.00067	"	0.167		59.6	30-130			
Chrysene	0.108	0.00067	"	0.167		64.6	30-130			
Dibenz(a,h)anthracene	0.0896	0.00067	"	0.167		53.6	30-130			
Fluorene	0.0992	0.00067	"	0.167		59.4	30-130			
Benzo(a)pyrene	0.106	0.00067	"	0.167		63.4	30-130			
Fluoranthene	0.111	0.00067	"	0.167		66.4	30-130			
Pyrene	0.105	0.00067	"	0.167		62.8	30-130			
Naphthalene	0.0869	0.00201	"	0.167		52	30-130			
Anthracene	0.0942	0.00067	"	0.167		56.4	30-130			
Acenaphthene	0.0923	0.00067	"	0.167		55.2	30-130			
2-Methylnaphthalene	0.0997	0.00201	"	0.167		59.7	30-130			
1-Methylnaphthalene	0.0866	0.00201	"	0.167		51.8	30-130			
Indeno(1,2,3-cd)pyrene	0.0871	0.00067	"	0.167		52.1	30-130			

Origins Laboratory, Inc.



The results in this report apply to the samples analyzed in accordance with the chain of custody document. This analytical report must be reproduced in its entirety.

Eagle Environmental Consulting, Inc.  
8000 W 44th Ave  
Wheat Ridge CO 80033

Martin C Eckert III  
Project Number: [none]  
Project: Noble - Wells Ranch CGF

**PAH by 8270D SIM - Quality Control**  
**Waypoint Analytical, LLC.**

Analyte	Result	Reporting Limit	Units	Spike Level	Source Result	%REC	%REC Limits	RPD	RPD Limit	Notes
<b>Batch L656721 - 3550B</b>										
<b>LCS (LCS-L656721)</b>					Prepared: 01/04/2023 Analyzed: 01/04/2023					
Benzo(a)anthracene	0.105	0.00067	mg/Kg	0.167		62.8	30-130			
Surrogate: Nitrobenzene-d5	53.7		"	0.333		53.7	29-110			
Surrogate: 4-Terphenyl-d14	58.8		"	0.333		58.8	33-122			
Surrogate: 2-Fluorobiphenyl	49.8		"	0.333		49.8	33-115			
<b>LRB (LRB-L656721)</b>					Prepared: 01/04/2023 Analyzed: 01/04/2023					
Naphthalene	ND	0.00201	mg/Kg				-			
Benzo(b)fluoranthene	ND	0.00067	"				-			
Benzo(k)fluoranthene	ND	0.00067	"				-			
Chrysene	ND	0.00067	"				-			
Dibenz(a,h)anthracene	ND	0.00067	"				-			
Fluoranthene	ND	0.00067	"				-			
Benzo(a)pyrene	ND	0.00067	"				-			
Indeno(1,2,3-cd)pyrene	ND	0.00067	"				-			
Fluorene	ND	0.00067	"				-			
Benzo(a)anthracene	ND	0.00067	"				-			
Anthracene	ND	0.00067	"				-			
Acenaphthene	ND	0.00067	"				-			
2-Methylnaphthalene	ND	0.00201	"				-			
1-Methylnaphthalene	ND	0.00201	"				-			
Pyrene	ND	0.00067	"				-			
Surrogate: 2-Fluorobiphenyl	71.1		"	0.333		71.1	33-115			
Surrogate: Nitrobenzene-d5	79.5		"	0.333		79.5	29-110			
Surrogate: 4-Terphenyl-d14	75		"	0.333		75	33-122			

Origins Laboratory, Inc.



The results in this report apply to the samples analyzed in accordance with the chain of custody document. This analytical report must be reproduced in its entirety.

Eagle Environmental Consulting, Inc.  
8000 W 44th Ave  
Wheat Ridge CO 80033

Martin C Eckert III  
Project Number: [none]  
Project: Noble - Wells Ranch CGF

## Total Metals by 7196A - Quality Control Waypoint Analytical, LLC.

Analyte	Result	Reporting Limit	Units	Spike Level	Source Result	%REC	%REC Limits	RPD	RPD Limit	Notes
<b>Batch L656746 -</b>										
<b>DUP (L 88331-DUP)</b>		<b>Source: 88331</b>			Prepared: Analyzed: 01/04/2023					
Chromium, Hexavalent	ND	2.5	mg/Kg		<2.50	-		0	20	
<b>MS (L 88331-MS)</b>		<b>Source: 88331</b>			Prepared: Analyzed: 01/04/2023					
Chromium, Hexavalent	24.6	2.5	mg/Kg	38.7	<1.22	64	75-125			*
<b>MSD (L 88331-MSD)</b>		<b>Source: 88331</b>			Prepared: Analyzed: 01/04/2023					
Chromium, Hexavalent	600	50	mg/Kg	734	<24.4	82	75-125			
<b>LCS (LCS)</b>					Prepared: Analyzed: 01/04/2023					
Chromium, Hexavalent	6.3	0.5	mg/Kg	8		79	75-125			
<b>LRB (LRB)</b>					Prepared: Analyzed: 01/04/2023					
Chromium, Hexavalent	ND	0.5	mg/Kg							

Origins Laboratory, Inc.



The results in this report apply to the samples analyzed in accordance with the chain of custody document. This analytical report must be reproduced in its entirety.



Eagle Environmental Consulting, Inc.  
8000 W 44th Ave  
Wheat Ridge CO 80033

Martin C Eckert III  
Project Number: [none]  
Project: Noble - Wells Ranch CGF

### Notes and Definitions

U Sample is Non-Detect.

QR-DUP RPD exceeds QC acceptance criteria, this indicates source sample is not homogenous.

QM-07 The spike recovery was outside acceptance limits for the MS and/or MSD. The batch was accepted based on acceptable LCS recovery.

\* QC Failure

ND Analyte NOT DETECTED at or above the reporting limit

RPD Relative Percent Difference

All soil results are reported on a wet weight basis.

Origins Laboratory, Inc.



*The results in this report apply to the samples analyzed in accordance with the chain of custody document. This analytical report must be reproduced in its entirety.*



January 05, 2023

**Eagle Environmental Consulting, Inc.**

**Martin C Eckert III**

**8000 W 44th Ave**

**Wheat Ridge CO 80033**

**Project Name - Noble - Wells Ranch CGF**

**Project Number - [none]**

Attached are your analytical results for Noble - Wells Ranch CGF received by Origins Laboratory, Inc. December 27, 2022. This project is associated with Origins project number Y212573-01.

The analytical results in the following report were analyzed under the guidelines of EPA Methods. These methods are identified as follows; "SW" are defined in SW-846, "EPA" are defined in 40CFR part 136 and "SM" are defined in the most current revision of Standard Methods For the Examination of Water and Wastewater.

The analytical results apply specifically to the samples and analyses specified per the attached Chain of Custody. As such, this report shall not be reproduced except in full, without the written approval of Origin's laboratory.

Unless otherwise noted, the analytical results for all soil samples are reported on a wet weight basis. All analytical analyses were performed under NELAP guidelines unless noted by a data qualifier.

Any holding time exceedances, deviations from the method specifications or deviations from Origins Laboratory's Standard Operating Procedures are outlined in the case narrative.

Thank you for selecting Origins for your analytical needs. Please contact us with any questions concerning this report, or if we can help with anything at all.

Origins Laboratory, Inc.  
303.433.1322  
o-squad@oelabinc.com



1725 Elk Place, Denver, CO 80211 | Phone: 303.433.1322 | Fax: 303.265.9645

Eagle Environmental Consulting, Inc.

8000 W 44th Ave

Wheat Ridge CO 80033

Martin C Eckert III

Project Number: [none]

Project: Noble - Wells Ranch CGF

### CROSS REFERENCE REPORT

Sample ID	Laboratory ID	Matrix	Date Sampled	Date Received
Background-01@0.5'	Y212573-01	Soil	December 27, 2022 15:15	12/27/2022 17:30

Origins Laboratory, Inc.



*The results in this report apply to the samples analyzed in accordance with the chain of custody document. This analytical report must be reproduced in its entirety.*

Jordan A. Bynon, Project Manager





Eagle Environmental Consulting, Inc.  
8000 W 44th Ave  
Wheat Ridge CO 80033

Martin C Eckert III  
Project Number: [none]  
Project: Noble - Wells Ranch CGF

Origins Laboratory

F-012207-01-R1  
Effective Date: 01/09/12

**Sample Receipt Checklist**

Origins Work Order: YU2573 Client: Eagle  
Client Project ID: Wells ranch CGF BPW

Checklist Completed by: DE Shipped Via: HP  
(UPS, FedEx, Hand Delivered, Pick-up, etc.)  
Date/time completed: 12/17/2012 Airbill #: NA

Matrix(s) Received: (Check all that apply): X Soil/Solid        Water        Other:       

Cooler Number/Temperature: 1 20 °C        °C        °C (Describe)        °C

Thermometer ID: 7004

Requirement Description	Yes	No	N/A	Comments (if any)
If samples require cooling, was the temperature between 0°C to ≤ 6°C <sup>(1)</sup> ?	<u>X</u>			
Is there ice present (document if blue ice is used)?	<u>X</u>			
Are custody seals present on cooler? (if so, document in comments if they are signed and dated, broken or intact)		<u>X</u>		
Are custody seals present on each sample container? (if so, document in comments if they are signed and dated, broken or intact)		<u>X</u>		
Were all samples received intact <sup>(1)</sup> ?	<u>X</u>			
Was adequate sample volume provided <sup>(1)</sup> ?	<u>X</u>			
Are short holding time analytes or samples with HTs due within 48 hours present <sup>(1)</sup> ?	<u>X</u>	<u>X</u>		
Is a chain-of-custody (COC) present and filled out completely <sup>(1)</sup> ?	<u>X</u>			
Does the COC agree with the number and type of sample bottles received <sup>(1)</sup> ?		<u>X</u>		<u>says 1, brought 2/BJar</u>
Do the sample IDs on the bottle labels match the COC <sup>(1)</sup> ?	<u>X</u>			
Is the COC properly relinquished by the client with date and time recorded <sup>(1)</sup> ?	<u>X</u>			
For volatiles in water – is there headspace (> ¼ inch bubble) present? If yes, contact client and note in narrative.	<u>X</u>			
Are samples preserved that require preservation and was it checked <sup>(1)</sup> ? (note ID of confirmation instrument used in comments) / (preservation is not confirmed for subcontracted analyses in order to insure sample integrity)/(pH < 2 for samples preserved with HNO <sub>3</sub> , HCL, H <sub>2</sub> SO <sub>4</sub> ) / (pH > 10 for samples preserved with NaAsO <sub>2</sub> +NaOH, ZnAc+NaOH)			<u>X</u>	
Additional Comments (if any):				

<sup>(1)</sup>If NO, then contact the client before proceeding with analysis and note date/time and person contacted as well as the corrective action to in the additional comments (above) and the case narrative.

Reviewed by (Project Manager)

Date/Time Reviewed

Origins Laboratory, Inc.

*J. Bynon*

The results in this report apply to the samples analyzed in accordance with the chain of custody document. This analytical report must be reproduced in its entirety.

Eagle Environmental Consulting, Inc.  
8000 W 44th Ave  
Wheat Ridge CO 80033

Martin C Eckert III  
Project Number: [none]  
Project: Noble - Wells Ranch CGF

**Background-01@0.5'**  
**12/27/2022 3:15:00PM**

Analyte	Result	Min Detection Limit	Reporting Limit	Units	Dilution	Batch	Prepared	Analyzed	Notes
---------	--------	---------------------	-----------------	-------	----------	-------	----------	----------	-------

**Origins Laboratory, Inc.**  
**Y212573-01 (Soil)**

**Boron (DTPA Sorbitol)**

Boron	0.111	0.100	mg/L	1	B2L2804	12/28/2022	01/03/2023
-------	-------	-------	------	---	---------	------------	------------

**Metals by Saturated Paste by EPA 6010**

Calcium	1.25	0.499	meq/L	10	[CALC]	12/29/2022	01/03/2023
Magnesium	ND	0.823	"	"	"	"	"
Sodium	ND	0.435	"	"	"	"	"

**pH in Soil by 9045D**

pH	8.30		pH Units	1	B2L2910	12/29/2022	12/30/2022
----	------	--	----------	---	---------	------------	------------

**SAR by 20B Saturated Paste**

SAR	0.261		SAR	1	B2L2908	12/29/2022	01/03/2023
-----	-------	--	-----	---	---------	------------	------------

**Specific Conductance Mod. 9050A**

Specific Conductance (EC)	0.218	0.00500	mmhos/cm	1	B2L2910	12/29/2022	12/30/2022
---------------------------	-------	---------	----------	---	---------	------------	------------

**Table 915 metals by EPA 6020B**

Arsenic	2.73	0.0942	mg/kg	10	B2L2801	12/28/2022	12/29/2022
Barium	46.6	9.42	"	"	"	"	"
Cadmium	ND	0.0942	"	"	"	"	"

Origins Laboratory, Inc.



*The results in this report apply to the samples analyzed in accordance with the chain of custody document. This analytical report must be reproduced in its entirety.*

Eagle Environmental Consulting, Inc.  
8000 W 44th Ave  
Wheat Ridge CO 80033

Martin C Eckert III  
Project Number: [none]  
Project: Noble - Wells Ranch CGF

**Background-01@0.5'**

**12/27/2022 3:15:00PM**

Analyte	Result	Min Detection Limit	Reporting Limit	Units	Dilution	Batch	Prepared	Analyzed	Notes
---------	--------	------------------------	--------------------	-------	----------	-------	----------	----------	-------

**Origins Laboratory, Inc.**  
**Y212573-01 (Soil)**

**Table 915 metals by EPA 6020B**

Copper	ND	9.42	mg/kg	10	B2L2801	12/28/2022	12/29/2022
Lead	ND	9.42	"	"	"	"	"
Nickel	ND	9.42	"	"	"	"	"
Selenium	ND	0.0942	"	"	"	"	"
Silver	ND	0.0942	"	"	"	"	"
Zinc	ND	94.2	"	"	"	"	"

**Total Metals by 7196A**

Chromium, Hexavalent	ND	0.244	0.5	mg/Kg	1	L656745	12/27/2022	01/04/2023
----------------------	----	-------	-----	-------	---	---------	------------	------------

Origins Laboratory, Inc.



*The results in this report apply to the samples analyzed in accordance with the chain of custody document. This analytical report must be reproduced in its entirety.*



Eagle Environmental Consulting, Inc.  
8000 W 44th Ave  
Wheat Ridge CO 80033

Martin C Eckert III  
Project Number: [none]  
Project: Noble - Wells Ranch CGF

## Metals by EPA 6000/7000 Series Methods - Quality Control

### Origins Laboratory, Inc.

Analyte	Result	Reporting Limit	Units	Spike Level	Source Result	%REC	%REC Limits	RPD	RPD Limit	Notes
---------	--------	-----------------	-------	-------------	---------------	------	-------------	-----	-----------	-------

#### Batch B2L2801 - EPA 3050B

#### Blank (B2L2801-BLK1)

Prepared: 12/28/2022 Analyzed: 12/29/2022

Arsenic	ND	0.000100	mg/kg
Barium	ND	0.0100	"
Cadmium	ND	0.000100	"
Copper	ND	0.0100	"
Lead	ND	0.0100	"
Nickel	ND	0.0100	"
Selenium	ND	0.000100	"
Silver	ND	0.000100	"
Zinc	ND	0.100	"

#### LCS (B2L2801-BS1)

Prepared: 12/28/2022 Analyzed: 12/29/2022

Arsenic	0.0520	0.000100	mg/kg	0.0500	104	80-120
Barium	5.09	0.0100	"	5.00	102	80-120
Cadmium	0.0528	0.000100	"	0.0500	106	80-120
Copper	0.515	0.0100	"	0.500	103	80-120
Lead	0.0516	0.0100	"	0.0500	103	80-120
Nickel	0.0522	0.0100	"	0.0500	104	80-120
Selenium	0.0505	0.000100	"	0.0500	101	80-120
Silver	0.0528	0.000100	"	0.0500	106	80-120
Zinc	0.506	0.100	"	0.500	101	80-120

#### Matrix Spike (B2L2801-MS1)

Source: Y212569-01

Prepared: 12/28/2022 Analyzed: 12/29/2022

Arsenic	9.21	0.0926	mg/kg	4.63	3.91	114	75-125
Barium	696	9.26	"	463	227	101	75-125
Cadmium	6.16	0.0926	"	4.63	0.443	124	75-125
Copper	69.0	9.26	"	46.3	17.8	111	75-125
Lead	14.3	9.26	"	4.63	8.96	115	75-125

Origins Laboratory, Inc.



The results in this report apply to the samples analyzed in accordance with the chain of custody document. This analytical report must be reproduced in its entirety.

Eagle Environmental Consulting, Inc.  
8000 W 44th Ave  
Wheat Ridge CO 80033

Martin C Eckert III  
Project Number: [none]  
Project: Noble - Wells Ranch CGF

**Metals by EPA 6000/7000 Series Methods - Quality Control**  
**Origins Laboratory, Inc.**

Analyte	Result	Reporting Limit	Units	Spike Level	Source Result	%REC	%REC Limits	RPD	RPD Limit	Notes
<b>Batch B2L2801 - EPA 3050B</b>										
<b>Matrix Spike (B2L2801-MS1)</b>		<b>Source: Y212569-01</b>			Prepared: 12/28/2022 Analyzed: 12/29/2022					
Nickel	13.4	9.26	mg/kg	4.63	9.05	94.9	75-125			
Selenium	4.65	0.0926	"	4.63	0.314	93.7	75-125			
Silver	5.75	0.0926	"	4.63	0.0745	123	75-125			
Zinc	107	92.6	"	46.3	58.2	105	75-125			
<b>Matrix Spike Dup (B2L2801-MSD1)</b>		<b>Source: Y212569-01</b>			Prepared: 12/28/2022 Analyzed: 12/29/2022					
Arsenic	8.32	0.0897	mg/kg	4.49	3.91	98.4	75-125	10.1	20	
Barium	619	8.97	"	449	227	87.4	75-125	11.8	20	
Cadmium	5.17	0.0897	"	4.49	0.443	105	75-125	17.5	20	
Copper	60.6	8.97	"	44.9	17.8	95.3	75-125	13.0	20	
Lead	13.8	8.97	"	4.49	8.96	107	75-125	3.62	20	
Nickel	13.1	8.97	"	4.49	9.05	90.6	75-125	2.48	20	
Selenium	4.48	0.0897	"	4.49	0.314	92.8	75-125	3.85	20	
Silver	4.67	0.0897	"	4.49	0.0745	102	75-125	20.8	20	QR-02
Zinc	103	89.7	"	44.9	58.2	98.9	75-125	3.93	20	

Origins Laboratory, Inc.



*The results in this report apply to the samples analyzed in accordance with the chain of custody document. This analytical report must be reproduced in its entirety.*

Eagle Environmental Consulting, Inc.  
8000 W 44th Ave  
Wheat Ridge CO 80033

Martin C Eckert III  
Project Number: [none]  
Project: Noble - Wells Ranch CGF

## Classical Chemistry Parameters - Quality Control

### Origins Laboratory, Inc.

Analyte	Result	Reporting Limit	Units	Spike Level	Source Result	%REC	%REC Limits	RPD	RPD Limit	Notes
---------	--------	-----------------	-------	-------------	---------------	------	-------------	-----	-----------	-------

#### Batch B2L2804 - DTPA Sorbitol Preparation

##### Blank (B2L2804-BLK1)

Prepared: 12/28/2022 Analyzed: 01/03/2023

Boron ND 0.100 mg/L

##### Duplicate (B2L2804-DUP1)

Source: Y212569-08

Prepared: 12/28/2022 Analyzed: 01/03/2023

Boron 0.987 0.100 mg/L 0.940 4.84 50

#### Batch B2L2908 - Saturated Paste Metals

##### Blank (B2L2908-BLK1)

Prepared: 12/29/2022 Analyzed: 01/03/2023

SAR 0.00 SAR  
Calcium PPM ND 10.0 mg/L  
Magnesium PPM ND 10.0 "  
Sodium PPM ND 10.0 "

##### Duplicate (B2L2908-DUP1)

Source: Y212568-01

Prepared: 12/29/2022 Analyzed: 01/03/2023

SAR 0.00 SAR 1.53 200 200  
Calcium PPM 518 10.0 mg/L 390 28.1 50  
Magnesium PPM 206 10.0 " 142 36.9 50  
Sodium PPM 181 10.0 " 139 26.7 50

Origins Laboratory, Inc.



The results in this report apply to the samples analyzed in accordance with the chain of custody document. This analytical report must be reproduced in its entirety.

Jordan A. Bynon, Project Manager

Eagle Environmental Consulting, Inc.  
8000 W 44th Ave  
Wheat Ridge CO 80033

Martin C Eckert III  
Project Number: [none]  
Project: Noble - Wells Ranch CGF

## Saturated Paste - Quality Control Origins Laboratory, Inc.

Analyte	Result	Reporting Limit	Units	Spike Level	Source Result	%REC	%REC Limits	RPD	RPD Limit	Notes
<b>Batch B2L2910 - Saturated Paste pH/EC</b>										
<b>Blank (B2L2910-BLK1)</b>					Prepared: 12/29/2022 Analyzed: 12/30/2022					
Specific Conductance (EC)	ND	0.00500	mmhos/cm							
<b>Duplicate (B2L2910-DUP1)</b>					Source: Y212568-01 Prepared: 12/29/2022 Analyzed: 12/30/2022					
pH	7.40		pH Units		7.51			1.48	25	
Specific Conductance (EC)	3.78	0.00500	mmhos/cm		2.93			25.2	25	QR-DUP

Origins Laboratory, Inc.



The results in this report apply to the samples analyzed in accordance with the chain of custody document. This analytical report must be reproduced in its entirety.



Eagle Environmental Consulting, Inc.  
8000 W 44th Ave  
Wheat Ridge CO 80033

Martin C Eckert III  
Project Number: [none]  
Project: Noble - Wells Ranch CGF

## Total Metals by 7196A - Quality Control Waypoint Analytical, LLC.

Analyte	Result	Reporting Limit	Units	Spike Level	Source Result	%REC	%REC Limits	RPD	RPD Limit	Notes
<b>Batch L656745 -</b>										
<b>DUP (L 88325-DUP)</b>		<b>Source: 88325</b>			Prepared: Analyzed: 01/04/2023					
Chromium, Hexavalent	ND	0.503	mg/Kg		<0.503	-		0	20	
<b>MS (L 88325-MS)</b>		<b>Source: 88325</b>			Prepared: Analyzed: 01/04/2023					
Chromium, Hexavalent	32.3	2.5	mg/Kg	39.5	< 0.244	82	75-125			
<b>MSD (L 88325-MSD)</b>		<b>Source: 88325</b>			Prepared: Analyzed: 01/04/2023					
Chromium, Hexavalent	457	50	mg/Kg	601	<24.4	76	75-125			
<b>LCS (LCS)</b>					Prepared: Analyzed: 01/04/2023					
Chromium, Hexavalent	6.19	0.5	mg/Kg	8		77	75-125			
<b>LRB (LRB)</b>					Prepared: Analyzed: 01/04/2023					
Chromium, Hexavalent	ND	0.5	mg/Kg				-			

Origins Laboratory, Inc.



The results in this report apply to the samples analyzed in accordance with the chain of custody document. This analytical report must be reproduced in its entirety.

Eagle Environmental Consulting, Inc.  
8000 W 44th Ave  
Wheat Ridge CO 80033

Martin C Eckert III  
Project Number: [none]  
Project: Noble - Wells Ranch CGF

### Notes and Definitions

QR-DUP RPD exceeds QC acceptance criteria, this indicates source sample is not homogenous.

QR-02 The RPD result exceeded the QC control limits; however, both percent recoveries were acceptable. Sample results for the QC batch were accepted based on percent recoveries and completeness of QC data.

ND Analyte NOT DETECTED at or above the reporting limit

RPD Relative Percent Difference

All soil results are reported on a wet weight basis.

Origins Laboratory, Inc.



*The results in this report apply to the samples analyzed in accordance with the chain of custody document. This analytical report must be reproduced in its entirety.*



January 17, 2023

Eagle Environmental Consulting, Inc.

Martin C Eckert III

8000 W 44th Ave

Wheat Ridge CO 80033

**Project Name - Noble - Wells Ranch CGF**

**Project Number - N/A**

Attached are your analytical results for Noble - Wells Ranch CGF received by Origins Laboratory, Inc. January 16, 2023. This project is associated with Origins project number Y301261-01.

The analytical results in the following report were analyzed under the guidelines of EPA Methods. These methods are identified as follows; "SW" are defined in SW-846, "EPA" are defined in 40CFR part 136 and "SM" are defined in the most current revision of Standard Methods For the Examination of Water and Wastewater.

The analytical results apply specifically to the samples and analyses specified per the attached Chain of Custody. As such, this report shall not be reproduced except in full, without the written approval of Origin's laboratory.

Unless otherwise noted, the analytical results for all soil samples are reported on a wet weight basis. All analytical analyses were performed under NELAP guidelines unless noted by a data qualifier.

Any holding time exceedances, deviations from the method specifications or deviations from Origins Laboratory's Standard Operating Procedures are outlined in the case narrative.

Thank you for selecting Origins for your analytical needs. Please contact us with any questions concerning this report, or if we can help with anything at all.

Origins Laboratory, Inc.  
303.433.1322  
o-squad@oelabinc.com



1725 Elk Place, Denver, CO 80211 | Phone: 303.433.1322 | Fax: 303.265.9645

Eagle Environmental Consulting, Inc.

8000 W 44th Ave

Wheat Ridge CO 80033

Martin C Eckert III

Project Number: N/A

Project: Noble - Wells Ranch CGF

## CROSS REFERENCE REPORT

Sample ID	Laboratory ID	Matrix	Date Sampled	Date Received
CS-SS-01@0.75'	Y301261-01	Soil	January 16, 2023 12:45	01/16/2023 15:58
CS-SS-02@0.75'	Y301261-02	Soil	January 16, 2023 12:46	01/16/2023 15:58
CS-SS-03@0.75'	Y301261-03	Soil	January 16, 2023 12:47	01/16/2023 15:58
CS-SS-04@0.75'	Y301261-04	Soil	January 16, 2023 12:48	01/16/2023 15:58
CS-SS-05@0.75'	Y301261-05	Soil	January 16, 2023 12:49	01/16/2023 15:58
CS-SS-07@0.75'	Y301261-06	Soil	January 16, 2023 12:51	01/16/2023 15:58
CS-FS-01@1.5'	Y301261-07	Soil	January 16, 2023 13:00	01/16/2023 15:58
CS-FS-02@0.5'	Y301261-08	Soil	January 16, 2023 13:01	01/16/2023 15:58
CS-FS-03@0.5'	Y301261-09	Soil	January 16, 2023 13:02	01/16/2023 15:58
CS-FS-04@1.5'	Y301261-10	Soil	January 16, 2023 13:03	01/16/2023 15:58
CS-FS-05@0.5'	Y301261-11	Soil	January 16, 2023 13:04	01/16/2023 15:58
CS-FS-06@1.5'	Y301261-12	Soil	January 16, 2023 13:05	01/16/2023 15:58
CS-FS-07@0.5'	Y301261-13	Soil	January 16, 2023 13:06	01/16/2023 15:58

Origins Laboratory, Inc.



*The results in this report apply to the samples analyzed in accordance with the chain of custody document. This analytical report must be reproduced in its entirety.*



Eagle Environmental Consulting, Inc.

8000 W 44th Ave

Wheat Ridge CO 80033

Martin C Eckert III

Project Number: N/A

Project: Noble - Wells Ranch CGF

1725 Elk Place | Denver, CO 80211 | Phone: 303.433.1322 | Fax: 303.265.9645

Sample ID Description	Date Sampled	Time Sampled	# of Containers	Preservative			Matrix			Analysis	Sample Instructions
				Unpreserved	HCl	HNO <sub>3</sub>	Other	Groundwater	Soil		
CS-55-01@0.75'	11/6/23	1245	2	X							Hold for PAHs
CS-55-02@0.75'		1246	1								
CS-55-03@0.75'		1247	1								
CS-55-04@0.75'		1248	1								
CS-55-05@0.75'		1249	1								
CS-55-07@0.75'		1251	1								
CS-55-01@1.5'		1300	1								
CS-55-02@0.5'		1301	1								
CS-55-03@0.5'		1302	1								
CS-55-04@1.5'		1303	1								
Relinquished By: <u>Bryon W. Mathis</u>				Date: 11/6/23	Time: 1558	Received By: <u>CHS</u>				Date: 11/6/23	Time: 1558
Relinquished By: <u>Bryon W. Mathis</u>				Date: 11/6/23	Time: 1558	Received By: <u>CHS</u>				Date: 11/6/23	Time: 1558

Bill to Dan

Temp Received- 4.8

Date Results Needed

11/6/23

11/6/23

Turnaround Time:  
☐ 48 Hr  
☒ 24 Hr  
☐ 72 Hr  
☐ Standard

Email Address: mce3@eagle-env.com

Telephone Number: 303-433-0479

Samples Collected By: BW/EL

Client: Eagle Environmental Consulting  
 Address: 8000 W 44th Ave  
 Wheat Ridge CO 80033

Project Manager: Martin Eckert III  
 Project Name: Noble - Wells Ranch CGF  
 Project Number: -

ORIGINS  
LABORATORY, INC

4301261

page 1 of 2

www.originslaboratory.com

Origins Laboratory, Inc.

*Bryon*

The results in this report apply to the samples analyzed in accordance with the chain of custody document. This analytical report must be reproduced in its entirety.

Eagle Environmental Consulting, Inc.

8000 W 44th Ave

Wheat Ridge CO 80033

Martin C Eckert III

Project Number: N/A

Project: Noble - Wells Ranch CGF

1725 Elk Place | Denver, CO 80211 | Phone: 303.433.1322 | Fax: 303.265.9645

Sample ID Description	Date Sampled	Time Sampled	# of Containers	Preservative			Matrix			Analysis	Sample Instructions		
				Unpreserved	HCl	HNO <sub>3</sub>	Other	Groundwater	Soil			Air Summa Canister #	Other
CS-FS-05@05'	11/16/13	1304	2	X							Hold for DATH		
CS-FS-06@10'		1305	1										
CS-FS-07@0.5'		1306	1										
Relinquished By: <u>Mike</u>				Date: <u>11/16/13</u>		Time: <u>1550</u>		Received By: <u>ELIS</u>		Date: <u>11/16/13</u>		Time: <u>1558</u>	
Relinquished By: <u>Mike</u>				Date: <u>11/16/13</u>		Time: <u>1550</u>		Received By: <u>ELIS</u>		Date: <u>11/16/13</u>		Time: <u>1558</u>	
Turnaround Time:				Same Day <input checked="" type="checkbox"/>		24 Hr <input type="checkbox"/>		48 Hr <input type="checkbox"/>		72 Hr <input type="checkbox"/>		Standard <input type="checkbox"/>	

1511 to Dan

Temp Received: 4.8

Date Results Needed



Client: Eagle Environmental Consulting  
 Address: 8000 W 44th Ave  
 Telephone Number: 303-433-0474  
 Email Address: mike3@eagle-env.com

Project Manager: Martin Eckert III  
 Project Name: Noble - Wells Ranch CGF  
 Project Number: -  
 Samples Collected By: BAJ/EL

ORIGINS  
LABORATORY, INC

430261

page 2 of 2

www.originslaboratory.com

Origins Laboratory, Inc.

*Bynon*

The results in this report apply to the samples analyzed in accordance with the chain of custody document. This analytical report must be reproduced in its entirety.

Eagle Environmental Consulting, Inc.

8000 W 44th Ave

Wheat Ridge CO 80033

Martin C Eckert III

Project Number: N/A

Project: Noble - Wells Ranch CGF

Origins Laboratory

## Sample Receipt Checklist

F-012207-01-R1  
Effective Date: 01/09/12

Origins Work Order: 4301261

Client: Eagle

Client Project ID: Wells Ranch CGF

Checklist Completed by: EHS/DF

Shipped Via: HD

Date/time completed: 1/16/23

(UPS, FedEx, Hand Delivered, Pick-up, etc.)

Airbill #: NA

Matrix(s) Received: (Check all that apply): ☒ Soil/Solid ☐ Water ☐ Other: \_\_\_\_\_

Cooler Number/Temperature: 1 4.8 °C 1 °C 1 °C (Describe) °C

Thermometer ID: 1009

Requirement Description	Yes	No	N/A	Comments (if any)
If samples require cooling, was the temperature between 0°C to ≤ 6°C <sup>(1)</sup> ?	<input checked="" type="checkbox"/>			
Is there ice present (document if blue ice is used)	<input checked="" type="checkbox"/>			
Are custody seals present on cooler? (if so, document in comments if they are signed and dated, broken or intact)		<input checked="" type="checkbox"/>		
Are custody seals present on each sample container? (if so, document in comments if they are signed and dated, broken or intact)		<input checked="" type="checkbox"/>		
Were all samples received intact <sup>(1)</sup> ?	<input checked="" type="checkbox"/>			
Was adequate sample volume provided <sup>(1)</sup> ?	<input checked="" type="checkbox"/>			
Are short holding time analytes or samples with HTs due within 48 hours present <sup>(1)</sup> ?		<input checked="" type="checkbox"/>		
Is a chain-of-custody (COC) present and filled out completely <sup>(1)</sup> ?	<input checked="" type="checkbox"/>			
Does the COC agree with the number and type of sample bottles received <sup>(1)</sup> ?	<input checked="" type="checkbox"/>			
Do the sample IDs on the bottle labels match the COC <sup>(1)</sup> ?	<input checked="" type="checkbox"/>			
Is the COC properly relinquished by the client with date and time recorded <sup>(1)</sup> ?	<input checked="" type="checkbox"/>			
For volatiles in water – is there headspace (> ¼ inch bubble) present? If yes, contact client and note in narrative.			<input checked="" type="checkbox"/>	
Are samples preserved that require preservation and was it checked <sup>(1)</sup> ? (note ID of confirmation instrument used in comments) / (preservation is not confirmed for subcontracted analyses in order to insure sample integrity)/(pH <2 for samples preserved with HNO <sub>3</sub> , HCL, H <sub>2</sub> SO <sub>4</sub> ) / (pH >10 for samples preserved with NaAsO <sub>2</sub> +NaOH, ZnAc+NaOH)		<input checked="" type="checkbox"/>		
Additional Comments (if any):				

<sup>(1)</sup>If NO, then contact the client before proceeding with analysis and note date/time and person contacted as well as the corrective action to in the additional comments (above) and the case narrative.

Reviewed by (Project Manager) DF

Date/Time Reviewed 01/26/2023

Origins Laboratory, Inc.

*J. Bynon*

The results in this report apply to the samples analyzed in accordance with the chain of custody document. This analytical report must be reproduced in its entirety.

Eagle Environmental Consulting, Inc.  
8000 W 44th Ave  
Wheat Ridge CO 80033

Martin C Eckert III  
Project Number: N/A  
Project: Noble - Wells Ranch CGF

CS-SS-01@0.75'

1/16/2023 12:45:00PM

Analyte	Result	Reporting Limit	Units	Dilution	Batch	Analyst	Prepared	Analyzed	Notes
---------	--------	-----------------	-------	----------	-------	---------	----------	----------	-------

**Origins Laboratory, Inc.**  
**Y301261-01 (Soil)**

**DRO/ORO by EPA 8015D**

Diesel (C10-C28)	ND	25.0	mg/kg	1	B3A1610	ADM	01/16/2023	01/16/2023	U
Residual Range Organics (C28-C40)	ND	100	"	"	"	ADM	"	"	U

Surrogate: o-Terphenyl 79.7 % 50-150 " " "

**GBTEX+TMBs by 8260D**

1,2,4-Trimethylbenzene	ND	0.00200	mg/kg	1	B3A1612	ZZZ	01/16/2023	01/16/2023	U
1,3,5-Trimethylbenzene	ND	0.00200	"	"	"	ZZZ	"	"	U
Benzene	ND	0.00200	"	"	"	ZZZ	"	"	U
Ethylbenzene	ND	0.00200	"	"	"	ZZZ	"	"	U
Naphthalene	ND	0.00380	"	"	"	ZZZ	"	"	U
Toluene	ND	0.00200	"	"	"	ZZZ	"	"	U
Xylenes, total	ND	0.00200	"	"	"	ZZZ	"	"	U
Gasoline Range Hydrocarbons	ND	0.200	"	"	"	ZZZ	"	"	U

Surrogate: 1,2-Dichloroethane-d4 90.5 % 70-130 " " "  
Surrogate: Toluene-d8 101 % 70-130 " " "  
Surrogate: 4-Bromofluorobenzene 101 % 70-130 " " "

Origins Laboratory, Inc.



The results in this report apply to the samples analyzed in accordance with the chain of custody document. This analytical report must be reproduced in its entirety.



Eagle Environmental Consulting, Inc.  
8000 W 44th Ave  
Wheat Ridge CO 80033

Martin C Eckert III  
Project Number: N/A  
Project: Noble - Wells Ranch CGF

CS-SS-02@0.75'

1/16/2023 12:46:00PM

Analyte	Result	Reporting Limit	Units	Dilution	Batch	Analyst	Prepared	Analyzed	Notes
---------	--------	-----------------	-------	----------	-------	---------	----------	----------	-------

**Origins Laboratory, Inc.**  
**Y301261-02 (Soil)**

**DRO/ORO by EPA 8015D**

Diesel (C10-C28)	ND	25.0	mg/kg	1	B3A1610	ADM	01/16/2023	01/16/2023	U
Residual Range Organics (C28-C40)	ND	100	"	"	"	ADM	"	"	U

Surrogate: o-Terphenyl 80.0 % 50-150 " " "

**GBTEX+TMBs by 8260D**

1,2,4-Trimethylbenzene	ND	0.00200	mg/kg	1	B3A1612	ZZZ	01/16/2023	01/16/2023	U
1,3,5-Trimethylbenzene	ND	0.00200	"	"	"	ZZZ	"	"	U
Benzene	ND	0.00200	"	"	"	ZZZ	"	"	U
Ethylbenzene	ND	0.00200	"	"	"	ZZZ	"	"	U
Naphthalene	ND	0.00380	"	"	"	ZZZ	"	"	U
Toluene	ND	0.00200	"	"	"	ZZZ	"	"	U
Xylenes, total	ND	0.00200	"	"	"	ZZZ	"	"	U
Gasoline Range Hydrocarbons	ND	0.200	"	"	"	ZZZ	"	"	U

Surrogate: 1,2-Dichloroethane-d4 90.4 % 70-130 " " "  
Surrogate: Toluene-d8 101 % 70-130 " " "  
Surrogate: 4-Bromofluorobenzene 102 % 70-130 " " "

Origins Laboratory, Inc.



The results in this report apply to the samples analyzed in accordance with the chain of custody document. This analytical report must be reproduced in its entirety.

Eagle Environmental Consulting, Inc.  
8000 W 44th Ave  
Wheat Ridge CO 80033

Martin C Eckert III  
Project Number: N/A  
Project: Noble - Wells Ranch CGF

CS-SS-03@0.75'

1/16/2023 12:47:00PM

Analyte	Result	Reporting Limit	Units	Dilution	Batch	Analyst	Prepared	Analyzed	Notes
---------	--------	-----------------	-------	----------	-------	---------	----------	----------	-------

**Origins Laboratory, Inc.**  
**Y301261-03 (Soil)**

**DRO/ORO by EPA 8015D**

Diesel (C10-C28)	ND	25.0	mg/kg	1	B3A1610	ADM	01/16/2023	01/16/2023	U
Residual Range Organics (C28-C40)	ND	100	"	"	"	ADM	"	"	U

Surrogate: o-Terphenyl 78.3 % 50-150 " " "

**GBTEX+TMBs by 8260D**

1,2,4-Trimethylbenzene	0.0170	0.00200	mg/kg	1	B3A1612	ZZZ	01/16/2023	01/16/2023	
1,3,5-Trimethylbenzene	0.00588	0.00200	"	"	"	ZZZ	"	"	
Benzene	0.00388	0.00200	"	"	"	ZZZ	"	"	
Ethylbenzene	ND	0.00200	"	"	"	ZZZ	"	"	U
Naphthalene	0.00520	0.00380	"	"	"	ZZZ	"	"	
Toluene	0.00754	0.00200	"	"	"	ZZZ	"	"	
Xylenes, total	0.0208	0.00200	"	"	"	ZZZ	"	"	
Gasoline Range Hydrocarbons	1.21	0.200	"	"	"	ZZZ	"	"	

Surrogate: 1,2-Dichloroethane-d4 90.8 % 70-130 " " "

Surrogate: Toluene-d8 99.2 % 70-130 " " "

Surrogate: 4-Bromofluorobenzene 102 % 70-130 " " "

Origins Laboratory, Inc.



The results in this report apply to the samples analyzed in accordance with the chain of custody document. This analytical report must be reproduced in its entirety.

Eagle Environmental Consulting, Inc.  
8000 W 44th Ave  
Wheat Ridge CO 80033

Martin C Eckert III  
Project Number: N/A  
Project: Noble - Wells Ranch CGF

CS-SS-04@0.75'

1/16/2023 12:48:00PM

Analyte	Result	Reporting Limit	Units	Dilution	Batch	Analyst	Prepared	Analyzed	Notes
---------	--------	-----------------	-------	----------	-------	---------	----------	----------	-------

Origins Laboratory, Inc.  
Y301261-04 (Soil)

DRO/ORO by EPA 8015D

Diesel (C10-C28)	ND	25.0	mg/kg	1	B3A1610	ADM	01/16/2023	01/16/2023	U
Residual Range Organics (C28-C40)	ND	100	"	"	"	ADM	"	"	U

Surrogate: o-Terphenyl 78.3 % 50-150 " "

GBTEX+TMBs by 8260D

1,2,4-Trimethylbenzene	0.00372	0.00200	mg/kg	1	B3A1612	ZZZ	01/16/2023	01/16/2023	
1,3,5-Trimethylbenzene	ND	0.00200	"	"	"	ZZZ	"	"	U
Benzene	ND	0.00200	"	"	"	ZZZ	"	"	U
Ethylbenzene	ND	0.00200	"	"	"	ZZZ	"	"	U
Naphthalene	ND	0.00380	"	"	"	ZZZ	"	"	U
Toluene	0.00338	0.00200	"	"	"	ZZZ	"	"	
Xylenes, total	0.00756	0.00200	"	"	"	ZZZ	"	"	
Gasoline Range Hydrocarbons	ND	0.200	"	"	"	ZZZ	"	"	U

Surrogate: 1,2-Dichloroethane-d4 91.4 % 70-130 " "

Surrogate: Toluene-d8 100 % 70-130 " "

Surrogate: 4-Bromofluorobenzene 102 % 70-130 " "

Origins Laboratory, Inc.



The results in this report apply to the samples analyzed in accordance with the chain of custody document. This analytical report must be reproduced in its entirety.

Eagle Environmental Consulting, Inc.  
8000 W 44th Ave  
Wheat Ridge CO 80033

Martin C Eckert III  
Project Number: N/A  
Project: Noble - Wells Ranch CGF

CS-SS-05@0.75'

1/16/2023 12:49:00PM

Analyte	Result	Reporting Limit	Units	Dilution	Batch	Analyst	Prepared	Analyzed	Notes
---------	--------	-----------------	-------	----------	-------	---------	----------	----------	-------

Origins Laboratory, Inc.  
Y301261-05 (Soil)

DRO/ORO by EPA 8015D

Diesel (C10-C28)	41.3	25.0	mg/kg	1	B3A1610	ADM	01/16/2023	01/16/2023	
Residual Range Organics (C28-C40)	ND	100	"	"	"	ADM	"	"	U

Surrogate: o-Terphenyl 94.0 % 50-150 " " "

GBTEX+TMBs by 8260D

1,2,4-Trimethylbenzene	0.0362	0.00200	mg/kg	1	B3A1612	ZZZ	01/16/2023	01/16/2023	
1,3,5-Trimethylbenzene	0.0132	0.00200	"	"	"	ZZZ	"	"	
Benzene	0.00212	0.00200	"	"	"	ZZZ	"	"	
Ethylbenzene	0.00312	0.00200	"	"	"	ZZZ	"	"	
Naphthalene	0.0142	0.00380	"	"	"	ZZZ	"	"	
Toluene	0.00624	0.00200	"	"	"	ZZZ	"	"	
Xylenes, total	0.0339	0.00200	"	"	"	ZZZ	"	"	
Gasoline Range Hydrocarbons	5.84	0.200	"	"	"	ZZZ	"	"	

Surrogate: 1,2-Dichloroethane-d4 88.8 % 70-130 " " "  
Surrogate: Toluene-d8 99.7 % 70-130 " " "  
Surrogate: 4-Bromofluorobenzene 103 % 70-130 " " "

Origins Laboratory, Inc.



The results in this report apply to the samples analyzed in accordance with the chain of custody document. This analytical report must be reproduced in its entirety.



Eagle Environmental Consulting, Inc.  
8000 W 44th Ave  
Wheat Ridge CO 80033

Martin C Eckert III  
Project Number: N/A  
Project: Noble - Wells Ranch CGF

CS-SS-07@0.75'

1/16/2023 12:51:00PM

Analyte	Result	Reporting Limit	Units	Dilution	Batch	Analyst	Prepared	Analyzed	Notes
---------	--------	-----------------	-------	----------	-------	---------	----------	----------	-------

Origins Laboratory, Inc.  
Y301261-06 (Soil)

DRO/ORO by EPA 8015D

Diesel (C10-C28)	ND	25.0	mg/kg	1	B3A1610	ADM	01/16/2023	01/16/2023	U
Residual Range Organics (C28-C40)	ND	100	"	"	"	ADM	"	"	U

Surrogate: o-Terphenyl 76.9 % 50-150 " " "

GBTEX+TMBs by 8260D

1,2,4-Trimethylbenzene	ND	0.00200	mg/kg	1	B3A1612	ZZZ	01/16/2023	01/16/2023	U
1,3,5-Trimethylbenzene	ND	0.00200	"	"	"	ZZZ	"	"	U
Benzene	0.00314	0.00200	"	"	"	ZZZ	"	"	
Ethylbenzene	ND	0.00200	"	"	"	ZZZ	"	"	U
Naphthalene	ND	0.00380	"	"	"	ZZZ	"	"	U
Toluene	0.00606	0.00200	"	"	"	ZZZ	"	"	
Xylenes, total	0.00414	0.00200	"	"	"	ZZZ	"	"	
Gasoline Range Hydrocarbons	0.313	0.200	"	"	"	ZZZ	"	"	

Surrogate: 1,2-Dichloroethane-d4 91.6 % 70-130 " " "  
Surrogate: Toluene-d8 101 % 70-130 " " "  
Surrogate: 4-Bromofluorobenzene 102 % 70-130 " " "

Origins Laboratory, Inc.



The results in this report apply to the samples analyzed in accordance with the chain of custody document. This analytical report must be reproduced in its entirety.

Eagle Environmental Consulting, Inc.  
8000 W 44th Ave  
Wheat Ridge CO 80033

Martin C Eckert III  
Project Number: N/A  
Project: Noble - Wells Ranch CGF

CS-FS-01@1.5'  
1/16/2023 1:00:00PM

Analyte	Result	Reporting Limit	Units	Dilution	Batch	Analyst	Prepared	Analyzed	Notes
---------	--------	-----------------	-------	----------	-------	---------	----------	----------	-------

Origins Laboratory, Inc.  
Y301261-07 (Soil)

**DRO/ORO by EPA 8015D**

Diesel (C10-C28)	ND	25.0	mg/kg	1	B3A1610	ADM	01/16/2023	01/16/2023	U
Residual Range Organics (C28-C40)	ND	100	"	"	"	ADM	"	"	U

Surrogate: o-Terphenyl 74.4 % 50-150 " " "

**GBTEX+TMBs by 8260D**

1,2,4-Trimethylbenzene	ND	0.00200	mg/kg	1	B3A1612	ZZZ	01/16/2023	01/16/2023	U
1,3,5-Trimethylbenzene	ND	0.00200	"	"	"	ZZZ	"	"	U
Benzene	ND	0.00200	"	"	"	ZZZ	"	"	U
Ethylbenzene	ND	0.00200	"	"	"	ZZZ	"	"	U
Naphthalene	ND	0.00380	"	"	"	ZZZ	"	"	U
Toluene	ND	0.00200	"	"	"	ZZZ	"	"	U
Xylenes, total	ND	0.00200	"	"	"	ZZZ	"	"	U
Gasoline Range Hydrocarbons	ND	0.200	"	"	"	ZZZ	"	"	U

Surrogate: 1,2-Dichloroethane-d4 90.5 % 70-130 " " "  
Surrogate: Toluene-d8 100 % 70-130 " " "  
Surrogate: 4-Bromofluorobenzene 102 % 70-130 " " "

Origins Laboratory, Inc.



The results in this report apply to the samples analyzed in accordance with the chain of custody document. This analytical report must be reproduced in its entirety.

Eagle Environmental Consulting, Inc.  
8000 W 44th Ave  
Wheat Ridge CO 80033

Martin C Eckert III  
Project Number: N/A  
Project: Noble - Wells Ranch CGF

CS-FS-02@0.5'  
1/16/2023 1:01:00PM

Analyte	Result	Reporting Limit	Units	Dilution	Batch	Analyst	Prepared	Analyzed	Notes
---------	--------	-----------------	-------	----------	-------	---------	----------	----------	-------

Origins Laboratory, Inc.  
Y301261-08 (Soil)

### DRO/ORO by EPA 8015D

Diesel (C10-C28)	ND	25.0	mg/kg	1	B3A1610	ADM	01/16/2023	01/17/2023	U
Residual Range Organics (C28-C40)	ND	100	"	"	"	ADM	"	"	U

Surrogate: o-Terphenyl 90.5 % 50-150 " " "

### GBTEX+TMBs by 8260D

1,2,4-Trimethylbenzene	ND	0.00200	mg/kg	1	B3A1612	ZZZ	01/16/2023	01/16/2023	U
1,3,5-Trimethylbenzene	ND	0.00200	"	"	"	ZZZ	"	"	U
Benzene	0.0127	0.00200	"	"	"	ZZZ	"	"	
Ethylbenzene	ND	0.00200	"	"	"	ZZZ	"	"	U
Naphthalene	ND	0.00380	"	"	"	ZZZ	"	"	U
Toluene	0.0141	0.00200	"	"	"	ZZZ	"	"	
Xylenes, total	ND	0.00200	"	"	"	ZZZ	"	"	U
Gasoline Range Hydrocarbons	ND	0.200	"	"	"	ZZZ	"	"	U

Surrogate: 1,2-Dichloroethane-d4 89.6 % 70-130 " " "  
Surrogate: Toluene-d8 101 % 70-130 " " "  
Surrogate: 4-Bromofluorobenzene 102 % 70-130 " " "

Origins Laboratory, Inc.



The results in this report apply to the samples analyzed in accordance with the chain of custody document. This analytical report must be reproduced in its entirety.

Eagle Environmental Consulting, Inc.  
8000 W 44th Ave  
Wheat Ridge CO 80033

Martin C Eckert III  
Project Number: N/A  
Project: Noble - Wells Ranch CGF

CS-FS-03@0.5'  
1/16/2023 1:02:00PM

Analyte	Result	Reporting Limit	Units	Dilution	Batch	Analyst	Prepared	Analyzed	Notes
---------	--------	-----------------	-------	----------	-------	---------	----------	----------	-------

Origins Laboratory, Inc.  
Y301261-09 (Soil)

### DRO/ORO by EPA 8015D

Diesel (C10-C28)	ND	25.0	mg/kg	1	B3A1610	ADM	01/16/2023	01/17/2023	U
Residual Range Organics (C28-C40)	ND	100	"	"	"	ADM	"	"	U

Surrogate: o-Terphenyl 93.8 % 50-150 " " "

### GBTEX+TMBs by 8260D

1,2,4-Trimethylbenzene	0.106	0.00200	mg/kg	1	B3A1612	ZZZ	01/16/2023	01/16/2023
1,3,5-Trimethylbenzene	0.0418	0.00200	"	"	"	ZZZ	"	"
Benzene	0.00518	0.00200	"	"	"	ZZZ	"	"
Ethylbenzene	0.0213	0.00200	"	"	"	ZZZ	"	"
Naphthalene	0.0155	0.00380	"	"	"	ZZZ	"	"
Toluene	0.0491	0.00200	"	"	"	ZZZ	"	"
Xylenes, total	0.205	0.00200	"	"	"	ZZZ	"	"
Gasoline Range Hydrocarbons	7.72	0.200	"	"	"	ZZZ	"	"

Surrogate: 1,2-Dichloroethane-d4 91.3 % 70-130 " " "

Surrogate: Toluene-d8 104 % 70-130 " " "

Surrogate: 4-Bromofluorobenzene 102 % 70-130 " " "

Origins Laboratory, Inc.



The results in this report apply to the samples analyzed in accordance with the chain of custody document. This analytical report must be reproduced in its entirety.



Eagle Environmental Consulting, Inc.  
8000 W 44th Ave  
Wheat Ridge CO 80033

Martin C Eckert III  
Project Number: N/A  
Project: Noble - Wells Ranch CGF

CS-FS-04@1.5'  
1/16/2023 1:03:00PM

Analyte	Result	Reporting Limit	Units	Dilution	Batch	Analyst	Prepared	Analyzed	Notes
---------	--------	-----------------	-------	----------	-------	---------	----------	----------	-------

Origins Laboratory, Inc.  
Y301261-10 (Soil)

**DRO/ORO by EPA 8015D**

Diesel (C10-C28)	ND	25.0	mg/kg	1	B3A1610	ADM	01/16/2023	01/17/2023	U
Residual Range Organics (C28-C40)	ND	100	"	"	"	ADM	"	"	U

Surrogate: o-Terphenyl 65.3 % 50-150 " " "

**GBTEX+TMBs by 8260D**

1,2,4-Trimethylbenzene	ND	0.00200	mg/kg	1	B3A1612	ZZZ	01/16/2023	01/16/2023	U
1,3,5-Trimethylbenzene	ND	0.00200	"	"	"	ZZZ	"	"	U
Benzene	ND	0.00200	"	"	"	ZZZ	"	"	U
Ethylbenzene	ND	0.00200	"	"	"	ZZZ	"	"	U
Naphthalene	ND	0.00380	"	"	"	ZZZ	"	"	U
Toluene	0.00310	0.00200	"	"	"	ZZZ	"	"	
Xylenes, total	ND	0.00200	"	"	"	ZZZ	"	"	U
Gasoline Range Hydrocarbons	ND	0.200	"	"	"	ZZZ	"	"	U

Surrogate: 1,2-Dichloroethane-d4 89.1 % 70-130 " " "  
Surrogate: Toluene-d8 100 % 70-130 " " "  
Surrogate: 4-Bromofluorobenzene 102 % 70-130 " " "

Origins Laboratory, Inc.



The results in this report apply to the samples analyzed in accordance with the chain of custody document. This analytical report must be reproduced in its entirety.

Eagle Environmental Consulting, Inc.  
8000 W 44th Ave  
Wheat Ridge CO 80033

Martin C Eckert III  
Project Number: N/A  
Project: Noble - Wells Ranch CGF

CS-FS-05@0.5'  
1/16/2023 1:04:00PM

Analyte	Result	Reporting Limit	Units	Dilution	Batch	Analyst	Prepared	Analyzed	Notes
---------	--------	-----------------	-------	----------	-------	---------	----------	----------	-------

Origins Laboratory, Inc.  
Y301261-11 (Soil)

**DRO/ORO by EPA 8015D**

Diesel (C10-C28)	ND	25.0	mg/kg	1	B3A1610	ADM	01/16/2023	01/17/2023	U
Residual Range Organics (C28-C40)	ND	100	"	"	"	ADM	"	"	U

Surrogate: o-Terphenyl 88.1 % 50-150 " " "

**GBTEX+TMBs by 8260D**

1,2,4-Trimethylbenzene	ND	0.00200	mg/kg	1	B3A1612	ZZZ	01/16/2023	01/16/2023	U
1,3,5-Trimethylbenzene	ND	0.00200	"	"	"	ZZZ	"	"	U
Benzene	0.00376	0.00200	"	"	"	ZZZ	"	"	
Ethylbenzene	ND	0.00200	"	"	"	ZZZ	"	"	U
Naphthalene	ND	0.00380	"	"	"	ZZZ	"	"	U
Toluene	0.00424	0.00200	"	"	"	ZZZ	"	"	
Xylenes, total	ND	0.00200	"	"	"	ZZZ	"	"	U
Gasoline Range Hydrocarbons	ND	0.200	"	"	"	ZZZ	"	"	U

Surrogate: 1,2-Dichloroethane-d4 100 % 70-130 " " "  
Surrogate: Toluene-d8 99.1 % 70-130 " " "  
Surrogate: 4-Bromofluorobenzene 101 % 70-130 " " "

Origins Laboratory, Inc.



The results in this report apply to the samples analyzed in accordance with the chain of custody document. This analytical report must be reproduced in its entirety.

Eagle Environmental Consulting, Inc.  
8000 W 44th Ave  
Wheat Ridge CO 80033

Martin C Eckert III  
Project Number: N/A  
Project: Noble - Wells Ranch CGF

CS-FS-06@1.5'  
1/16/2023 1:05:00PM

Analyte	Result	Reporting Limit	Units	Dilution	Batch	Analyst	Prepared	Analyzed	Notes
---------	--------	-----------------	-------	----------	-------	---------	----------	----------	-------

Origins Laboratory, Inc.  
Y301261-12 (Soil)

**DRO/ORO by EPA 8015D**

Diesel (C10-C28)	ND	25.0	mg/kg	1	B3A1610	ADM	01/16/2023	01/17/2023	U
Residual Range Organics (C28-C40)	ND	100	"	"	"	ADM	"	"	U

Surrogate: o-Terphenyl 89.4 % 50-150 " " "

**GBTEX+TMBs by 8260D**

1,2,4-Trimethylbenzene	ND	0.00200	mg/kg	1	B3A1612	ZZZ	01/16/2023	01/17/2023	U
1,3,5-Trimethylbenzene	ND	0.00200	"	"	"	ZZZ	"	"	U
Benzene	ND	0.00200	"	"	"	ZZZ	"	"	U
Ethylbenzene	ND	0.00200	"	"	"	ZZZ	"	"	U
Naphthalene	ND	0.00380	"	"	"	ZZZ	"	"	U
Toluene	ND	0.00200	"	"	"	ZZZ	"	"	U
Xylenes, total	ND	0.00200	"	"	"	ZZZ	"	"	U
Gasoline Range Hydrocarbons	ND	0.200	"	"	"	ZZZ	"	"	U

Surrogate: 1,2-Dichloroethane-d4 91.5 % 70-130 " " "  
Surrogate: Toluene-d8 101 % 70-130 " " "  
Surrogate: 4-Bromofluorobenzene 101 % 70-130 " " "

Origins Laboratory, Inc.



The results in this report apply to the samples analyzed in accordance with the chain of custody document. This analytical report must be reproduced in its entirety.

Eagle Environmental Consulting, Inc.  
8000 W 44th Ave  
Wheat Ridge CO 80033

Martin C Eckert III  
Project Number: N/A  
Project: Noble - Wells Ranch CGF

**CS-FS-07@0.5'**  
**1/16/2023 1:06:00PM**

Analyte	Result	Reporting Limit	Units	Dilution	Batch	Analyst	Prepared	Analyzed	Notes
---------	--------	-----------------	-------	----------	-------	---------	----------	----------	-------

**Origins Laboratory, Inc.**  
**Y301261-13 (Soil)**

**DRO/ORO by EPA 8015D**

Diesel (C10-C28)	ND	25.0	mg/kg	1	B3A1610	ADM	01/16/2023	01/17/2023	U
Residual Range Organics (C28-C40)	ND	100	"	"	"	ADM	"	"	U

Surrogate: o-Terphenyl 56.5 % 50-150 " " "

**GBTEX+TMBs by 8260D**

1,2,4-Trimethylbenzene	0.00446	0.00200	mg/kg	1	B3A1612	ZZZ	01/16/2023	01/17/2023	
1,3,5-Trimethylbenzene	ND	0.00200	"	"	"	ZZZ	"	"	U
Benzene	0.00588	0.00200	"	"	"	ZZZ	"	"	
Ethylbenzene	0.00296	0.00200	"	"	"	ZZZ	"	"	
Naphthalene	ND	0.00380	"	"	"	ZZZ	"	"	U
Toluene	0.0216	0.00200	"	"	"	ZZZ	"	"	
Xylenes, total	0.0172	0.00200	"	"	"	ZZZ	"	"	
Gasoline Range Hydrocarbons	0.234	0.200	"	"	"	ZZZ	"	"	

Surrogate: 1,2-Dichloroethane-d4 87.9 % 70-130 " " "  
Surrogate: Toluene-d8 102 % 70-130 " " "  
Surrogate: 4-Bromofluorobenzene 102 % 70-130 " " "

Origins Laboratory, Inc.



The results in this report apply to the samples analyzed in accordance with the chain of custody document. This analytical report must be reproduced in its entirety.



Eagle Environmental Consulting, Inc.  
8000 W 44th Ave  
Wheat Ridge CO 80033

Martin C Eckert III  
Project Number: N/A  
Project: Noble - Wells Ranch CGF

## Extractable Petroleum Hydrocarbons by 8015D - Quality Control Origins Laboratory, Inc.

Analyte	Result	Reporting Limit	Units	Spike Level	Source Result	%REC	%REC Limits	RPD	RPD Limit	Notes
Batch B3A1610 - EPA 3580										
Blank (B3A1610-BLK1)					Prepared: 01/16/2023 Analyzed: 01/16/2023					
Diesel (C10-C28)	ND	25.0	mg/kg							U
Residual Range Organics (C28-C40)	ND	100	"							U
Surrogate: o-Terphenyl	22		"	24.9		90.2	50-150			

Origins Laboratory, Inc.



The results in this report apply to the samples analyzed in accordance with the chain of custody document. This analytical report must be reproduced in its entirety.

Eagle Environmental Consulting, Inc.

8000 W 44th Ave

Wheat Ridge CO 80033

Martin C Eckert III

Project Number: N/A

Project: Noble - Wells Ranch CGF

## Extractable Petroleum Hydrocarbons by 8015D - Quality Control

Origins Laboratory, Inc.

Analyte	Result	Reporting Limit	Units	Spike Level	Source Result	%REC	%REC Limits	RPD	RPD Limit	Notes
---------	--------	-----------------	-------	-------------	---------------	------	-------------	-----	-----------	-------

Batch B3A1610 - EPA 3580

### LCS (B3A1610-BS1)

Prepared: 01/16/2023 Analyzed: 01/16/2023

Diesel (C10-C28)	826	50.0	mg/kg	1000		82.6	70-130			
Residual Range Organics (C28-C40)	905	200	"	1000		90.5	70-130			
Surrogate: o-Terphenyl	41		"	49.8		81.8	50-150			

Origins Laboratory, Inc.



The results in this report apply to the samples analyzed in accordance with the chain of custody document. This analytical report must be reproduced in its entirety.

Eagle Environmental Consulting, Inc.

8000 W 44th Ave

Wheat Ridge CO 80033

Martin C Eckert III

Project Number: N/A

Project: Noble - Wells Ranch CGF

## Extractable Petroleum Hydrocarbons by 8015D - Quality Control

### Origins Laboratory, Inc.

Analyte	Result	Reporting Limit	Units	Spike Level	Source Result	%REC	%REC Limits	RPD	RPD Limit	Notes
---------	--------	-----------------	-------	-------------	---------------	------	-------------	-----	-----------	-------

Batch B3A1610 - EPA 3580

Matrix Spike (B3A1610-MS1)		Source: Y301255-01			Prepared: 01/16/2023 Analyzed: 01/16/2023					
Diesel (C10-C28)	826	50.0	mg/kg	1000	ND	82.6	70-130			
Residual Range Organics (C28-C40)	905	200	"	1000	ND	90.5	70-130			
Surrogate: o-Terphenyl	38		"	49.8		77.2	50-150			

Origins Laboratory, Inc.



The results in this report apply to the samples analyzed in accordance with the chain of custody document. This analytical report must be reproduced in its entirety.

Eagle Environmental Consulting, Inc.  
8000 W 44th Ave  
Wheat Ridge CO 80033

Martin C Eckert III  
Project Number: N/A  
Project: Noble - Wells Ranch CGF

## Extractable Petroleum Hydrocarbons by 8015D - Quality Control Origins Laboratory, Inc.

Analyte	Result	Reporting Limit	Units	Spike Level	Source Result	%REC	%REC Limits	RPD	RPD Limit	Notes
Batch B3A1610 - EPA 3580										
Matrix Spike Dup (B3A1610-MSD1)		Source: Y301255-01			Prepared: 01/16/2023 Analyzed: 01/16/2023					
Diesel (C10-C28)	819	50.0	mg/kg	1000	ND	81.9	70-130	0.949	35	
Residual Range Organics (C28-C40)	901	200	"	1000	ND	90.1	70-130	0.406	35	
Surrogate: o-Terphenyl	39		"	49.8		77.6	50-150			

Origins Laboratory, Inc.



The results in this report apply to the samples analyzed in accordance with the chain of custody document. This analytical report must be reproduced in its entirety.



Eagle Environmental Consulting, Inc.  
8000 W 44th Ave  
Wheat Ridge CO 80033

Martin C Eckert III  
Project Number: N/A  
Project: Noble - Wells Ranch CGF

## Extractable Petroleum Hydrocarbons by 8015D - Quality Control

### Origins Laboratory, Inc.

Analyte	Result	Reporting Limit	Units	Spike Level	Source Result	%REC	%REC Limits	RPD	RPD Limit	Notes
Batch B3A1612 - EPA 5030 (soil)										
Blank (B3A1612-BLK1)					Prepared: 01/16/2023 Analyzed: 01/16/2023					
1,2,4-Trimethylbenzene	ND	0.00200	mg/kg							U
1,3,5-Trimethylbenzene	ND	0.00200	"							U
Benzene	ND	0.00200	"							U
Ethylbenzene	ND	0.00200	"							U
Naphthalene	ND	0.00380	"							U
Toluene	ND	0.00200	"							U
Xylenes, total	ND	0.00200	"							U
Gasoline Range Hydrocarbons	ND	0.200	"							U
Surrogate: 1,2-Dichloroethane-d4	0.11		"	0.125		88.1	70-130			
Surrogate: Toluene-d8	0.13		"	0.125		101	70-130			
Surrogate: 4-Bromofluorobenzene	0.13		"	0.125		103	70-130			

Origins Laboratory, Inc.



The results in this report apply to the samples analyzed in accordance with the chain of custody document. This analytical report must be reproduced in its entirety.

Eagle Environmental Consulting, Inc.  
8000 W 44th Ave  
Wheat Ridge CO 80033

Martin C Eckert III  
Project Number: N/A  
Project: Noble - Wells Ranch CGF

**Volatile Organic Compounds by GC/MS SW846 8260D - Quality Control**  
**Origins Laboratory, Inc.**

Analyte	Result	Reporting Limit	Units	Spike Level	Source Result	%REC	%REC Limits	RPD	RPD Limit	Notes
<b>Batch B3A1612 - EPA 5030 (soil)</b>										
<b>LCS (B3A1612-BS1)</b>					Prepared: 01/16/2023 Analyzed: 01/16/2023					
1,2,4-Trimethylbenzene	0.0860	0.00200	mg/kg	0.100		86.0	70-130			
1,3,5-Trimethylbenzene	0.0878	0.00200	"	0.100		87.8	70-130			
Benzene	0.0916	0.00200	"	0.100		91.6	70-130			
Ethylbenzene	0.0910	0.00200	"	0.100		91.0	70-130			
Naphthalene	0.0824	0.00380	"	0.100		82.4	70-130			
Toluene	0.0910	0.00200	"	0.100		91.0	70-130			
o-Xylene	0.0900	0.00200	"	0.100		90.0	70-130			
m,p-Xylene	0.178	0.00400	"	0.200		89.2	70-130			
Surrogate: 1,2-Dichloroethane-d4	0.11		"	0.125		86.3	70-130			
Surrogate: Toluene-d8	0.13		"	0.125		101	70-130			
Surrogate: 4-Bromofluorobenzene	0.13		"	0.125		105	70-130			

Origins Laboratory, Inc.



*The results in this report apply to the samples analyzed in accordance with the chain of custody document. This analytical report must be reproduced in its entirety.*

Eagle Environmental Consulting, Inc.  
8000 W 44th Ave  
Wheat Ridge CO 80033

Martin C Eckert III  
Project Number: N/A  
Project: Noble - Wells Ranch CGF

## Volatile Organic Compounds by GC/MS SW846 8260D - Quality Control

### Origins Laboratory, Inc.

Analyte	Result	Reporting Limit	Units	Spike Level	Source Result	%REC	%REC Limits	RPD	RPD Limit	Notes
Batch B3A1612 - EPA 5030 (soil)										
Matrix Spike (B3A1612-MS1)		Source: Y301255-01			Prepared: 01/16/2023 Analyzed: 01/16/2023					
1,2,4-Trimethylbenzene	0.0931	0.00200	mg/kg	0.100	ND	93.1	70-130			
1,3,5-Trimethylbenzene	0.0952	0.00200	"	0.100	ND	95.2	70-130			
Benzene	0.103	0.00200	"	0.100	ND	103	70-130			
Ethylbenzene	0.0989	0.00200	"	0.100	ND	98.9	70-130			
Naphthalene	0.0865	0.00380	"	0.100	0.00102	85.5	70-130			
Toluene	0.0998	0.00200	"	0.100	ND	99.8	70-130			
o-Xylene	0.0976	0.00200	"	0.100	ND	97.6	70-130			
m,p-Xylene	0.194	0.00400	"	0.200	ND	96.9	70-130			
Surrogate: 1,2-Dichloroethane-d4	0.11		"	0.125		89.3	70-130			
Surrogate: Toluene-d8	0.12		"	0.125		99.6	70-130			
Surrogate: 4-Bromofluorobenzene	0.13		"	0.125		105	70-130			

Origins Laboratory, Inc.



The results in this report apply to the samples analyzed in accordance with the chain of custody document. This analytical report must be reproduced in its entirety.

Eagle Environmental Consulting, Inc.  
8000 W 44th Ave  
Wheat Ridge CO 80033

Martin C Eckert III  
Project Number: N/A  
Project: Noble - Wells Ranch CGF

**Volatile Organic Compounds by GC/MS SW846 8260D - Quality Control**  
**Origins Laboratory, Inc.**

Analyte	Result	Reporting Limit	Units	Spike Level	Source Result	%REC	%REC Limits	RPD	RPD Limit	Notes
<b>Batch B3A1612 - EPA 5030 (soil)</b>										
<b>Matrix Spike Dup (B3A1612-MSD1)</b>		<b>Source: Y301255-01</b>			Prepared: 01/16/2023 Analyzed: 01/16/2023					
1,2,4-Trimethylbenzene	0.0873	0.00200	mg/kg	0.100	ND	87.3	70-130	6.50	20	
1,3,5-Trimethylbenzene	0.0884	0.00200	"	0.100	ND	88.4	70-130	7.36	20	
Benzene	0.0953	0.00200	"	0.100	ND	95.3	70-130	7.52	20	
Ethylbenzene	0.0916	0.00200	"	0.100	ND	91.6	70-130	7.64	20	
Naphthalene	0.0856	0.00380	"	0.100	0.00102	84.6	70-130	1.02	20	
Toluene	0.0927	0.00200	"	0.100	ND	92.7	70-130	7.42	20	
o-Xylene	0.0910	0.00200	"	0.100	ND	91.0	70-130	6.93	20	
m,p-Xylene	0.181	0.00400	"	0.200	ND	90.4	70-130	6.93	20	
Surrogate: 1,2-Dichloroethane-d4	0.11		"	0.125		89.4	70-130			
Surrogate: Toluene-d8	0.13		"	0.125		100	70-130			
Surrogate: 4-Bromofluorobenzene	0.13		"	0.125		105	70-130			

Origins Laboratory, Inc.



The results in this report apply to the samples analyzed in accordance with the chain of custody document. This analytical report must be reproduced in its entirety.



Eagle Environmental Consulting, Inc.

8000 W 44th Ave

Wheat Ridge CO 80033

Martin C Eckert III

Project Number: N/A

Project: Noble - Wells Ranch CGF

### Notes and Definitions

U Sample is Non-Detect.

ND Analyte NOT DETECTED at or above the reporting limit

RPD Relative Percent Difference

All soil results are reported at a wet weight basis.

Origins Laboratory, Inc.



*The results in this report apply to the samples analyzed in accordance with the chain of custody document. This analytical report must be reproduced in its entirety.*



February 27, 2023

Eagle Environmental Consulting, Inc.

Martin C Eckert III

8000 W 44th Ave

Wheat Ridge CO 80033

**Project Name - Noble - Wells Ranch CGF**

**Project Number - N/A**

Attached are your analytical results for Noble - Wells Ranch CGF received by Origins Laboratory, Inc. February 24, 2023. This project is associated with Origins project number Y302483-01.

The analytical results in the following report were analyzed under the guidelines of EPA Methods. These methods are identified as follows; "SW" are defined in SW-846, "EPA" are defined in 40CFR part 136 and "SM" are defined in the most current revision of Standard Methods For the Examination of Water and Wastewater.

The analytical results apply specifically to the samples and analyses specified per the attached Chain of Custody. As such, this report shall not be reproduced except in full, without the written approval of Origin's laboratory.

Unless otherwise noted, the analytical results for all soil samples are reported on a wet weight basis. All analytical analyses were performed under NELAP guidelines unless noted by a data qualifier.

Any holding time exceedances, deviations from the method specifications or deviations from Origins Laboratory's Standard Operating Procedures are outlined in the case narrative.

Thank you for selecting Origins for your analytical needs. Please contact us with any questions concerning this report, or if we can help with anything at all.

Origins Laboratory, Inc.  
303.433.1322  
o-squad@oelabinc.com



1725 Elk Place, Denver, CO 80211 | Phone: 303.433.1322 | Fax: 303.265.9645

Eagle Environmental Consulting, Inc.

8000 W 44th Ave

Wheat Ridge CO 80033

Martin C Eckert III

Project Number: N/A

Project: Noble - Wells Ranch CGF

## CROSS REFERENCE REPORT

Sample ID	Laboratory ID	Matrix	Date Sampled	Date Received
Background-02@0.5'	Y302483-01	Soil	February 24, 2023 11:45	02/24/2023 14:18
Background-03@0.5'	Y302483-02	Soil	February 24, 2023 11:50	02/24/2023 14:18
Background-04@0.5'	Y302483-03	Soil	February 24, 2023 11:55	02/24/2023 14:18
Background-05@0.5'	Y302483-04	Soil	February 24, 2023 12:00	02/24/2023 14:18

Origins Laboratory, Inc.



*The results in this report apply to the samples analyzed in accordance with the chain of custody document. This analytical report must be reproduced in its entirety.*

Eagle Environmental Consulting, Inc.

8000 W 44th Ave

Wheat Ridge CO 80033

Martin C Eckert III

Project Number: N/A

Project: Noble - Wells Ranch CGF

1725 Ek Place | Denver, CO 80211 | Phone: 303.433.1322 | Fax: 303.265.9645

**ORIGINS**  
LABORATORY, INC

www.originslaboratory.com

Client: Eagle Environmental Consulting  
Address: 8000 W 44th Ave  
Telephone Number: 303-433-0474  
Email Address: mce3@eagle-enviro.com

Project Manager: Martin Eckert III  
Project Name: Wells Ranch CGF  
Project Number: 4302483  
Samples Collected By: Ben

Temp Received: 9.9 Date Results Needed: 2/24/13

Relinquished By: Bill to Dan

Sample ID Description	Date Sampled	Time Sampled	# of Containers	Preservative			Matrix		Analysis	Sample Instructions
				Unpreserved	HCl	HNO <sub>3</sub>	Other	Groundwater		
Budgum-02085'	2/24/13	11:15	2	X						
Budgum-03005'		11:50	1					X		
Budgum-04005'		11:55	1							
Budgum-05005'		12:00	1							

Relinquished By: Bill to Dan Date: 2/24/13 Time: 14:18

Received By: CHS Date: 2/24/13 Time: 14:18

Turnaround Time: ☒ Same Day ☐ 24 Hr ☐ 48 Hr ☐ 72 Hr ☐ Standard

Origins Laboratory, Inc.

*J. Bynon*

The results in this report apply to the samples analyzed in accordance with the chain of custody document. This analytical report must be reproduced in its entirety.



Eagle Environmental Consulting, Inc.

8000 W 44th Ave

Wheat Ridge CO 80033

Martin C Eckert III

Project Number: N/A

Project: Noble - Wells Ranch CGF

Origins Laboratory

F-012207-01-R1  
Effective Date: 01/09/12

## Sample Receipt Checklist

Origins Work Order: 4302483

Client: Eagle

Client Project ID: Wells Ranch CGF

Checklist Completed by: ETHS

Shipped Via: HD

(UPS, FedEx, Hand Delivered, Pick-up, etc.)

Date/time completed: 2/24/23

Airbill #: NA

Matrix(s) Received: (Check all that apply): ☒ Soil/Solid

☐ Water

☐ Other:

Cooler Number/Temperature: 1 / 4.9 °C

1 °C

1 °C

1 °C

(Describe)

Thermometer ID: 7004

Requirement Description	Yes	No	N/A	Comments (if any)
If samples require cooling, was the temperature between 0°C to ≤ 6°C <sup>(1)</sup> ?	<input checked="" type="checkbox"/>	<input type="checkbox"/>	<input type="checkbox"/>	
Is there ice present (document if blue ice is used)	<input checked="" type="checkbox"/>	<input type="checkbox"/>	<input type="checkbox"/>	
Are custody seals present on cooler? (if so, document in comments if they are signed and dated, broken or intact)	<input type="checkbox"/>	<input checked="" type="checkbox"/>	<input type="checkbox"/>	
Are custody seals present on each sample container? (if so, document in comments if they are signed and dated, broken or intact)	<input type="checkbox"/>	<input checked="" type="checkbox"/>	<input type="checkbox"/>	
Were all samples received intact <sup>(1)</sup> ?	<input checked="" type="checkbox"/>	<input type="checkbox"/>	<input type="checkbox"/>	
Was adequate sample volume provided <sup>(1)</sup> ?	<input checked="" type="checkbox"/>	<input type="checkbox"/>	<input type="checkbox"/>	
Are short holding time analytes or samples with HTs due within 48 hours present <sup>(1)</sup> ?	<input type="checkbox"/>	<input checked="" type="checkbox"/>	<input type="checkbox"/>	
Is a chain-of-custody (COC) present and filled out completely <sup>(1)</sup> ?	<input checked="" type="checkbox"/>	<input type="checkbox"/>	<input type="checkbox"/>	
Does the COC agree with the number and type of sample bottles received <sup>(1)</sup> ?	<input checked="" type="checkbox"/>	<input type="checkbox"/>	<input type="checkbox"/>	
Do the sample IDs on the bottle labels match the COC <sup>(1)</sup> ?	<input checked="" type="checkbox"/>	<input type="checkbox"/>	<input type="checkbox"/>	
Is the COC properly relinquished by the client with date and time recorded <sup>(1)</sup> ?	<input checked="" type="checkbox"/>	<input type="checkbox"/>	<input type="checkbox"/>	
For volatiles in water – is there headspace (> ¼ inch bubble) present? If yes, contact client and note in narrative.	<input type="checkbox"/>	<input type="checkbox"/>	<input checked="" type="checkbox"/>	
Are samples preserved that require preservation and was it checked <sup>(1)</sup> ? (note ID of confirmation instrument used in comments) / (preservation is not confirmed for subcontracted analyses in order to insure sample integrity)/(pH < 2 for samples preserved with HNO <sub>3</sub> , HCL, H <sub>2</sub> SO <sub>4</sub> ) / (pH > 10 for samples preserved with NaAsO <sub>2</sub> +NaOH, ZnAc+NaOH)	<input type="checkbox"/>	<input type="checkbox"/>	<input checked="" type="checkbox"/>	
Additional Comments (if any):				

<sup>(1)</sup>If NO, then contact the client before proceeding with analysis and note date/time and person contacted as well as the corrective action to in the additional comments (above) and the case narrative.

Reviewed by (Project Manager)

2/24/23  
Date/Time Reviewed

Origins Laboratory, Inc.

*J. Bynon*

The results in this report apply to the samples analyzed in accordance with the chain of custody document. This analytical report must be reproduced in its entirety.

Eagle Environmental Consulting, Inc.  
8000 W 44th Ave  
Wheat Ridge CO 80033

Martin C Eckert III  
Project Number: N/A  
Project: Noble - Wells Ranch CGF

**Background-02@0.5'**  
**2/24/2023 11:45:00AM**

Analyte	Result	Reporting Limit	Units	Dilution	Batch	Analyst	Prepared	Analyzed	Notes
---------	--------	-----------------	-------	----------	-------	---------	----------	----------	-------

**Origins Laboratory, Inc.**  
**Y302483-01 (Soil)**

**Table 915 metals by EPA 6020B**

Arsenic	2.80	0.0913	mg/kg	10	B3B2415	CNG	02/24/2023	02/24/2023
Barium	95.9	9.13	"	"	"	CNG	"	"
Cadmium	ND	0.0913	"	"	"	CNG	"	"
Copper	ND	9.13	"	"	"	CNG	"	"
Lead	ND	9.13	"	"	"	CNG	"	"
Nickel	ND	9.13	"	"	"	CNG	"	"
Selenium	ND	0.0913	"	"	"	CNG	"	"
Silver	ND	0.0913	"	"	"	CNG	"	"
Zinc	ND	91.3	"	"	"	CNG	"	"

Origins Laboratory, Inc.



*The results in this report apply to the samples analyzed in accordance with the chain of custody document. This analytical report must be reproduced in its entirety.*

Eagle Environmental Consulting, Inc.  
8000 W 44th Ave  
Wheat Ridge CO 80033

Martin C Eckert III  
Project Number: N/A  
Project: Noble - Wells Ranch CGF

**Background-03@0.5'**  
**2/24/2023 11:50:00AM**

Analyte	Result	Reporting Limit	Units	Dilution	Batch	Analyst	Prepared	Analyzed	Notes
---------	--------	-----------------	-------	----------	-------	---------	----------	----------	-------

**Origins Laboratory, Inc.**  
**Y302483-02 (Soil)**

**Table 915 metals by EPA 6020B**

Arsenic	2.08	0.0971	mg/kg	10	B3B2415	CNG	02/24/2023	02/24/2023
Barium	81.2	9.71	"	"	"	CNG	"	"
Cadmium	0.122	0.0971	"	"	"	CNG	"	"
Copper	ND	9.71	"	"	"	CNG	"	"
Lead	ND	9.71	"	"	"	CNG	"	"
Nickel	ND	9.71	"	"	"	CNG	"	"
Selenium	0.107	0.0971	"	"	"	CNG	"	"
Silver	ND	0.0971	"	"	"	CNG	"	"
Zinc	ND	97.1	"	"	"	CNG	"	"

Origins Laboratory, Inc.



*The results in this report apply to the samples analyzed in accordance with the chain of custody document. This analytical report must be reproduced in its entirety.*

Eagle Environmental Consulting, Inc.  
8000 W 44th Ave  
Wheat Ridge CO 80033

Martin C Eckert III  
Project Number: N/A  
Project: Noble - Wells Ranch CGF

**Background-04@0.5'**  
**2/24/2023 11:55:00AM**

Analyte	Result	Reporting Limit	Units	Dilution	Batch	Analyst	Prepared	Analyzed	Notes
---------	--------	-----------------	-------	----------	-------	---------	----------	----------	-------

**Origins Laboratory, Inc.**  
**Y302483-03 (Soil)**

**Table 915 metals by EPA 6020B**

Arsenic	2.06	0.0870	mg/kg	10	B3B2415	CNG	02/24/2023	02/24/2023
Barium	53.2	8.70	"	"	"	CNG	"	"
Cadmium	ND	0.0870	"	"	"	CNG	"	"
Copper	ND	8.70	"	"	"	CNG	"	"
Lead	ND	8.70	"	"	"	CNG	"	"
Nickel	ND	8.70	"	"	"	CNG	"	"
Selenium	0.0879	0.0870	"	"	"	CNG	"	"
Silver	ND	0.0870	"	"	"	CNG	"	"
Zinc	ND	87.0	"	"	"	CNG	"	"

Origins Laboratory, Inc.



*The results in this report apply to the samples analyzed in accordance with the chain of custody document. This analytical report must be reproduced in its entirety.*



Eagle Environmental Consulting, Inc.  
8000 W 44th Ave  
Wheat Ridge CO 80033

Martin C Eckert III  
Project Number: N/A  
Project: Noble - Wells Ranch CGF

**Background-05@0.5'**  
**2/24/2023 12:00:00PM**

Analyte	Result	Reporting Limit	Units	Dilution	Batch	Analyst	Prepared	Analyzed	Notes
---------	--------	-----------------	-------	----------	-------	---------	----------	----------	-------

**Origins Laboratory, Inc.**  
**Y302483-04 (Soil)**

**Table 915 metals by EPA 6020B**

Arsenic	2.51	0.0890	mg/kg	10	B3B2415	CNG	02/24/2023	02/24/2023
Barium	53.8	8.90	"	"	"	CNG	"	"
Cadmium	ND	0.0890	"	"	"	CNG	"	"
Copper	ND	8.90	"	"	"	CNG	"	"
Lead	ND	8.90	"	"	"	CNG	"	"
Nickel	ND	8.90	"	"	"	CNG	"	"
Selenium	ND	0.0890	"	"	"	CNG	"	"
Silver	ND	0.0890	"	"	"	CNG	"	"
Zinc	ND	89.0	"	"	"	CNG	"	"

Origins Laboratory, Inc.



*The results in this report apply to the samples analyzed in accordance with the chain of custody document. This analytical report must be reproduced in its entirety.*

Eagle Environmental Consulting, Inc.  
8000 W 44th Ave  
Wheat Ridge CO 80033

Martin C Eckert III  
Project Number: N/A  
Project: Noble - Wells Ranch CGF

**Metals by EPA 6000/7000 Series Methods - Quality Control**  
**Origins Laboratory, Inc.**

Analyte	Result	Reporting Limit	Units	Spike Level	Source Result	%REC	%REC Limits	RPD	RPD Limit	Notes
---------	--------	-----------------	-------	-------------	---------------	------	-------------	-----	-----------	-------

**Batch B3B2415 - EPA 3050B**

**Blank (B3B2415-BLK1)**

Prepared: 02/24/2023 Analyzed: 02/24/2023

Arsenic	ND	0.000100	mg/kg
Barium	ND	0.0100	"
Cadmium	ND	0.000100	"
Copper	ND	0.0100	"
Lead	ND	0.0100	"
Nickel	ND	0.0100	"
Selenium	ND	0.000100	"
Silver	ND	0.000100	"
Zinc	ND	0.100	"

**LCS (B3B2415-BS1)**

Prepared: 02/24/2023 Analyzed: 02/24/2023

Arsenic	0.0488	0.000100	mg/kg	0.0500	97.7	80-120
Barium	4.98	0.0100	"	5.00	99.6	80-120
Cadmium	0.0495	0.000100	"	0.0500	99.0	80-120
Copper	0.505	0.0100	"	0.500	101	80-120
Lead	0.0500	0.0100	"	0.0500	99.9	80-120
Nickel	0.0502	0.0100	"	0.0500	100	80-120
Selenium	0.0465	0.000100	"	0.0500	93.0	80-120
Silver	0.0505	0.000100	"	0.0500	101	80-120
Zinc	0.505	0.100	"	0.500	101	80-120

**Matrix Spike (B3B2415-MS1)**

**Source: Y302482-01**

Prepared: 02/24/2023 Analyzed: 02/24/2023

Arsenic	6.02	0.0937	mg/kg	4.68	1.77	90.7	75-125
Barium	1260	9.37	"	468	792	99.3	75-125
Cadmium	4.91	0.0937	"	4.68	0.206	100	75-125
Copper	75.5	9.37	"	46.8	31.4	94.2	75-125
Lead	10.2	9.37	"	4.68	5.75	94.3	75-125

Origins Laboratory, Inc.



*The results in this report apply to the samples analyzed in accordance with the chain of custody document. This analytical report must be reproduced in its entirety.*

Eagle Environmental Consulting, Inc.  
8000 W 44th Ave  
Wheat Ridge CO 80033

Martin C Eckert III  
Project Number: N/A  
Project: Noble - Wells Ranch CGF

**Metals by EPA 6000/7000 Series Methods - Quality Control**  
**Origins Laboratory, Inc.**

Analyte	Result	Reporting Limit	Units	Spike Level	Source Result	%REC	%REC Limits	RPD	RPD Limit	Notes
<b>Batch B3B2415 - EPA 3050B</b>										
<b>Matrix Spike (B3B2415-MS1)</b>		<b>Source: Y302482-01</b>			Prepared: 02/24/2023 Analyzed: 02/24/2023					
Nickel	9.34	9.37	mg/kg	4.68	4.49	104	75-125			
Selenium	4.73	0.0937	"	4.68	0.133	98.1	75-125			
Silver	4.94	0.0937	"	4.68	0.0206	105	75-125			
Zinc	72.2	93.7	"	46.8	26.7	97.3	75-125			
<b>Matrix Spike Dup (B3B2415-MSD1)</b>		<b>Source: Y302482-01</b>			Prepared: 02/24/2023 Analyzed: 02/24/2023					
Arsenic	6.02	0.0885	mg/kg	4.43	1.77	96.0	75-125	0.00669	20	
Barium	1460	8.85	"	443	792	152	75-125	15.1	20	QM-07
Cadmium	4.54	0.0885	"	4.43	0.206	97.9	75-125	7.76	20	
Copper	70.5	8.85	"	44.3	31.4	88.5	75-125	6.81	20	
Lead	9.57	8.85	"	4.43	5.75	86.2	75-125	6.10	20	
Nickel	9.89	8.85	"	4.43	4.49	122	75-125	5.71	20	
Selenium	4.20	0.0885	"	4.43	0.133	91.9	75-125	11.8	20	
Silver	4.51	0.0885	"	4.43	0.0206	102	75-125	8.97	20	
Zinc	138	88.5	"	44.3	26.7	251	75-125	62.4	20	QM-07, QR-DUP

Origins Laboratory, Inc.



*The results in this report apply to the samples analyzed in accordance with the chain of custody document. This analytical report must be reproduced in its entirety.*

Eagle Environmental Consulting, Inc.

8000 W 44th Ave

Wheat Ridge CO 80033

Martin C Eckert III

Project Number: N/A

Project: Noble - Wells Ranch CGF

### Notes and Definitions

QR-DUP RPD exceeds QC acceptance criteria, this indicates source sample is not homogenous.

QM-07 The spike recovery was outside acceptance limits for the MS and/or MSD. The batch was accepted based on acceptable LCS recovery.

ND Analyte NOT DETECTED at or above the reporting limit

RPD Relative Percent Difference

All soil results are reported at a wet weight basis.

Origins Laboratory, Inc.



*The results in this report apply to the samples analyzed in accordance with the chain of custody document. This analytical report must be reproduced in its entirety.*