



			Centralizers-8071-275-200 Tekco 2 3/4" Adjustable Centralizer	2.73	2.75	25.00
CCL	0.00					
GR	0.97					
			DSS_HSR_ELE-DSS_HSR_10_ELE (HSR10 0000) DSS 1 11/16" HSR Bond tool - Electronics Module	5.99	1.69	27.50
ROTV	5.24					
TCF	5.24					
THV	5.24					
INTEMP	5.24		CENT-DSS-RAC11-MID (RAC11MID-0000) DSS 1 11/16" MID Roller Arm Centralizer	2.61	1.69	16.00
PNEG	5.24					
PPOS	5.24					
GRHV	5.24					
WVFS6	9.77					
WVFS5	9.77					
WVFS4	9.77					
WVFS3	9.77					
WVFS2	9.77					
WVFS1	9.77		DSS_HSR_SND-DSS_HSR_10_SND (HSR10 0000) DSS 1 11/16" HSR Bond tool - Sonde Module	8.26	1.69	41.50
WVFCAL	10.27					
WVF3FT	10.27					
WVF5FT	11.27					
TEMP	15.77					
WVFSYNC	16.11					
			Centralizers-8071-275-200 Tekco 2 3/4" Adjustable Centralizer	2.73	2.75	25.00

Dataset: chevron-uprr usx y17-02.db: WATTENBERG-90750/UPRR\_USX\_Y17-02/RADIAL\_BOND\_LOG/RBL.1  
 Total length: 23.34 ft  
 Total weight: 138.31 lb  
 O.D.: 2.75 in

Database File chevron-uprr usx y17-02.db  
 Dataset Pathname WATTENBERG-90750/UPRR\_USX\_Y17-02/RADIAL\_BOND\_LOG/RBL.1  
 Presentation Format ranger\_dss\_radial  
 Dataset Creation Tue Nov 15 08:19:57 2022  
 Charted by Depth in Foot scaled 1:240

TT (3 ft.)		AMP (3 ft.)		0	RADAVG	100	VDL (5 ft.)		1	RADIAL MAP	6
380	(usec)	120	0	(mV)	100	0	RADMAX	100	200	(usec)	1200
-20000 CCL		20000		0 AMP3FT (mV)		20	0	RADMIN	100		
0 GR (GAPI)		150									

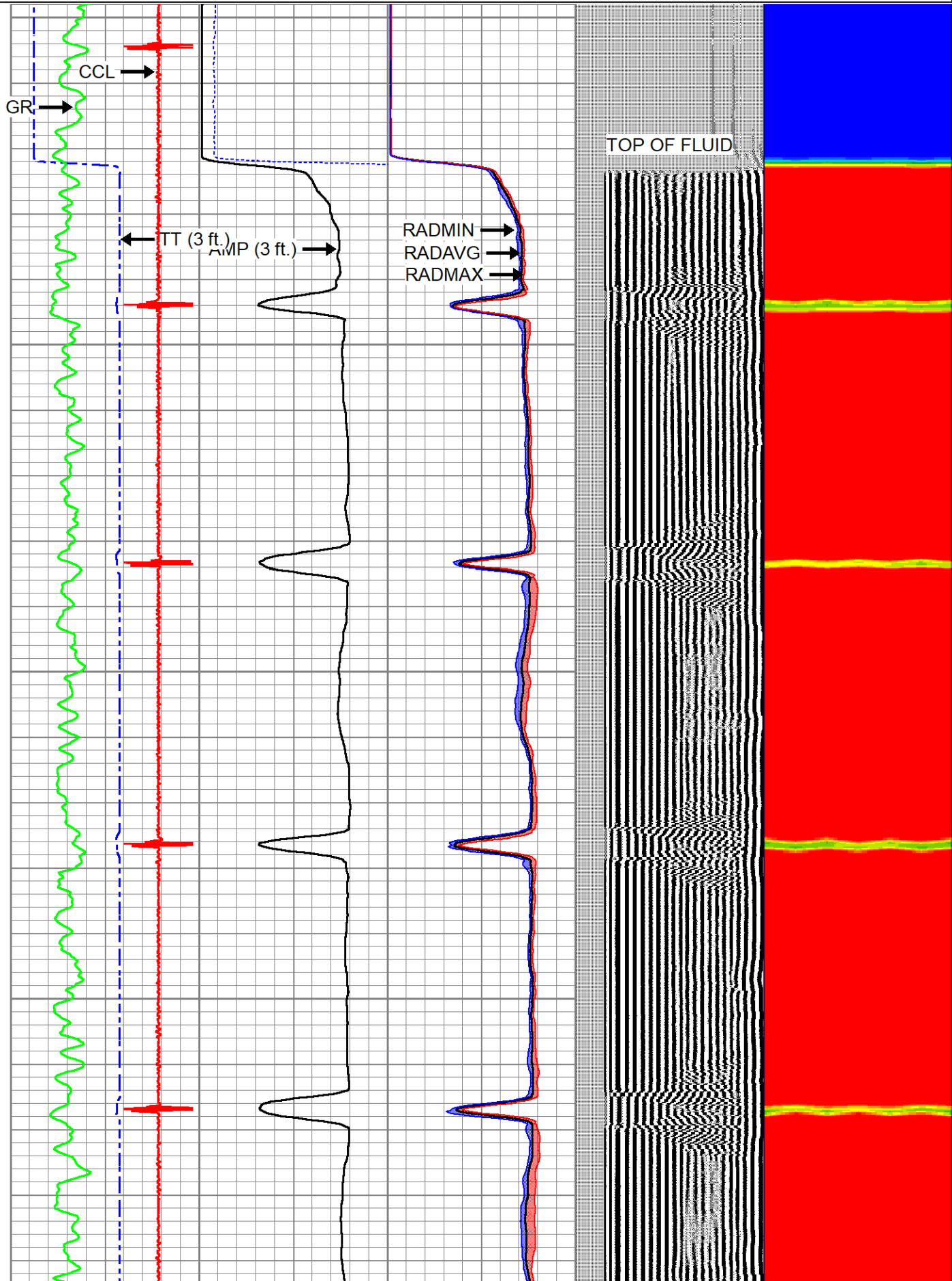
TOP OF FLUID

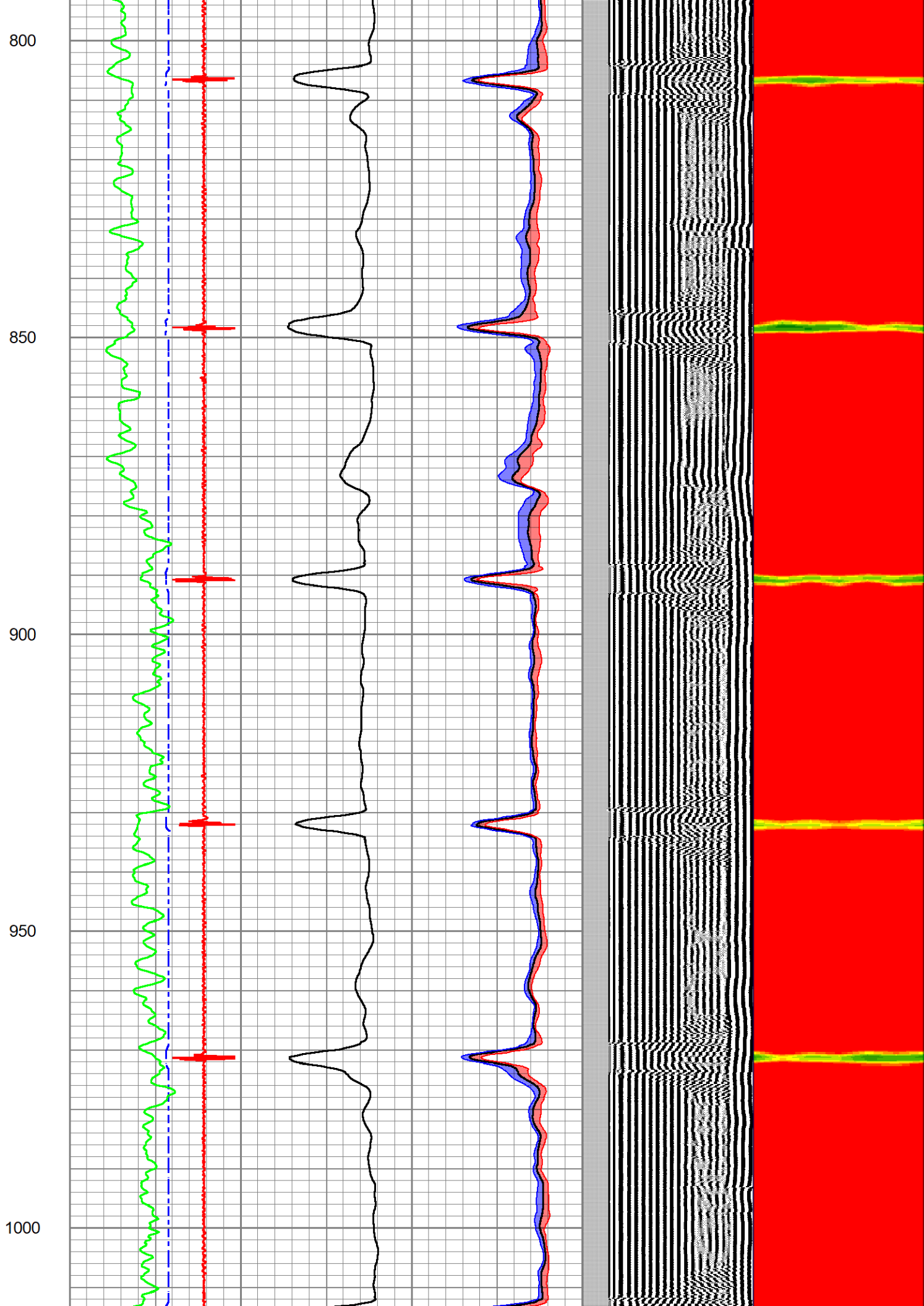
600

650

700

750



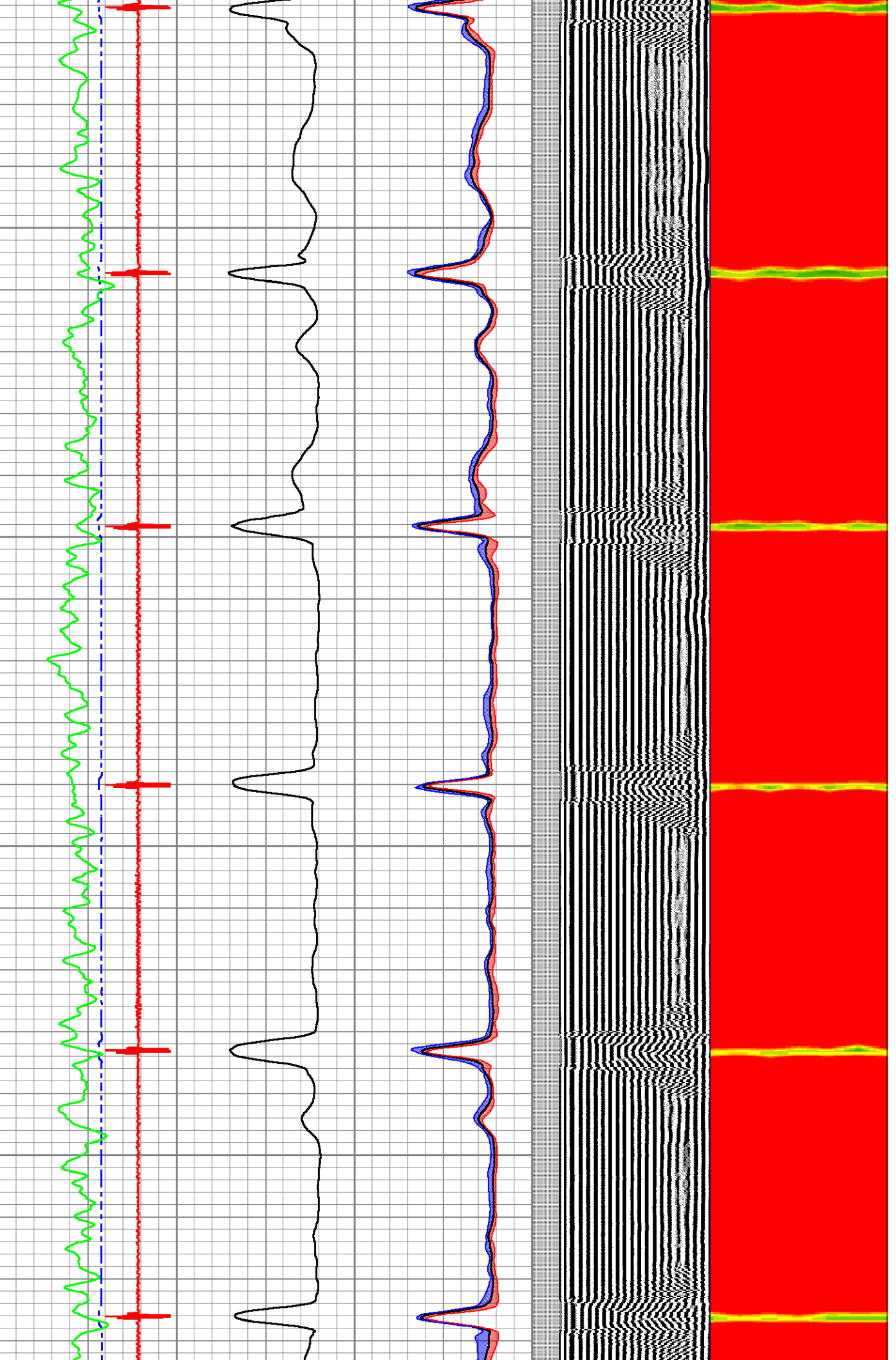


1050

1100

1150

1200



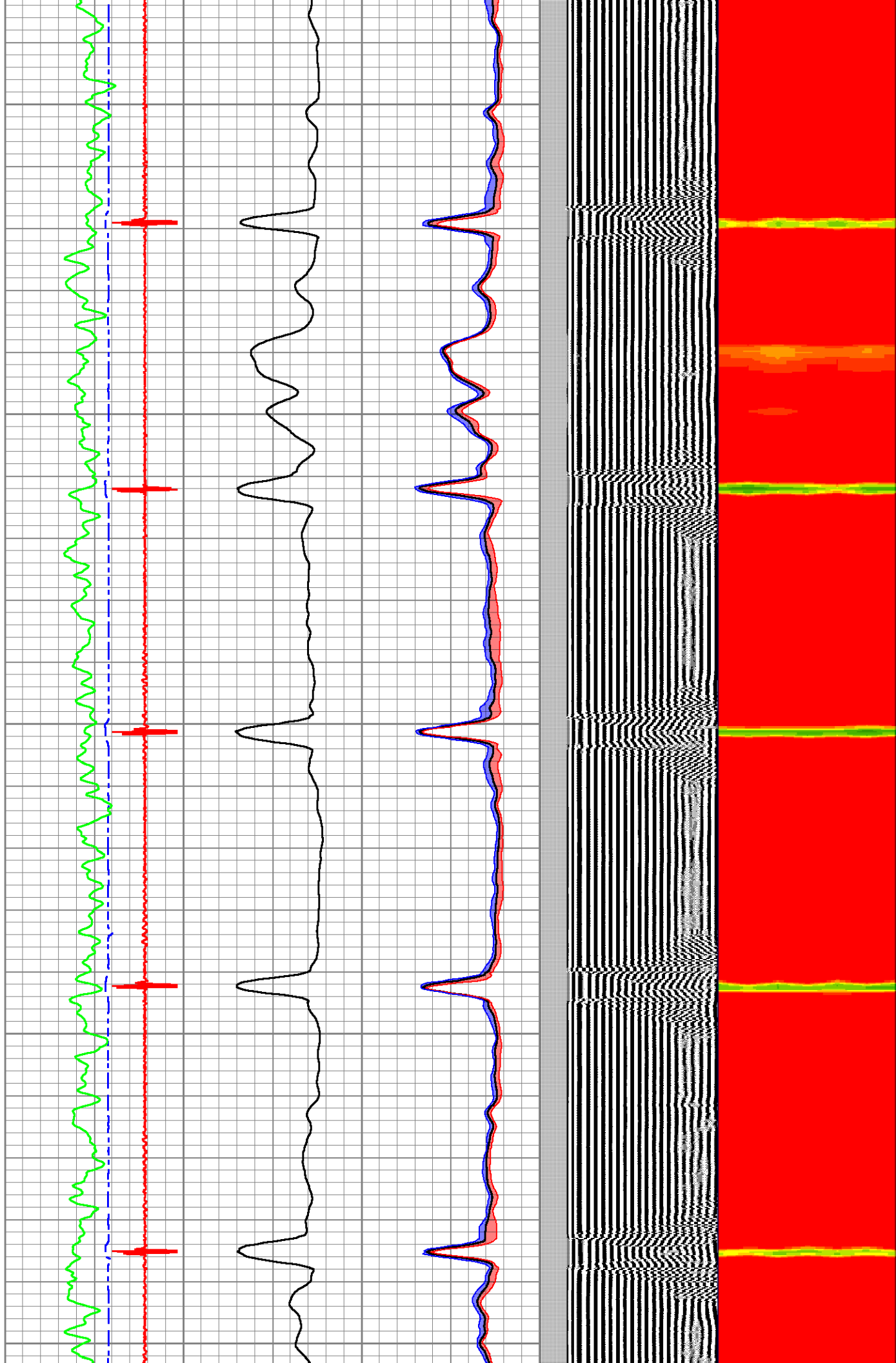
1250

1300

1350

1400

1450

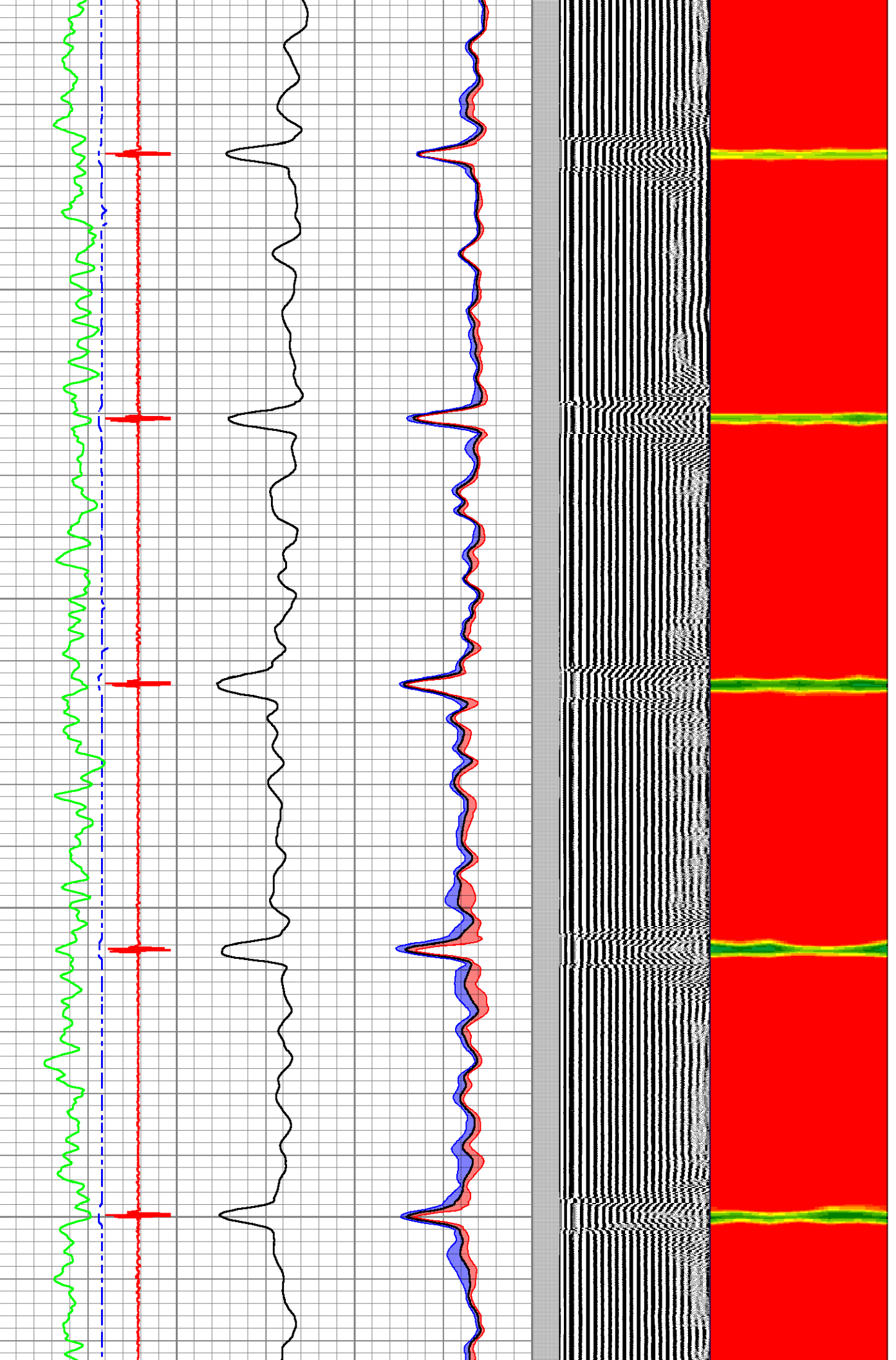


1500

1550

1600

1650

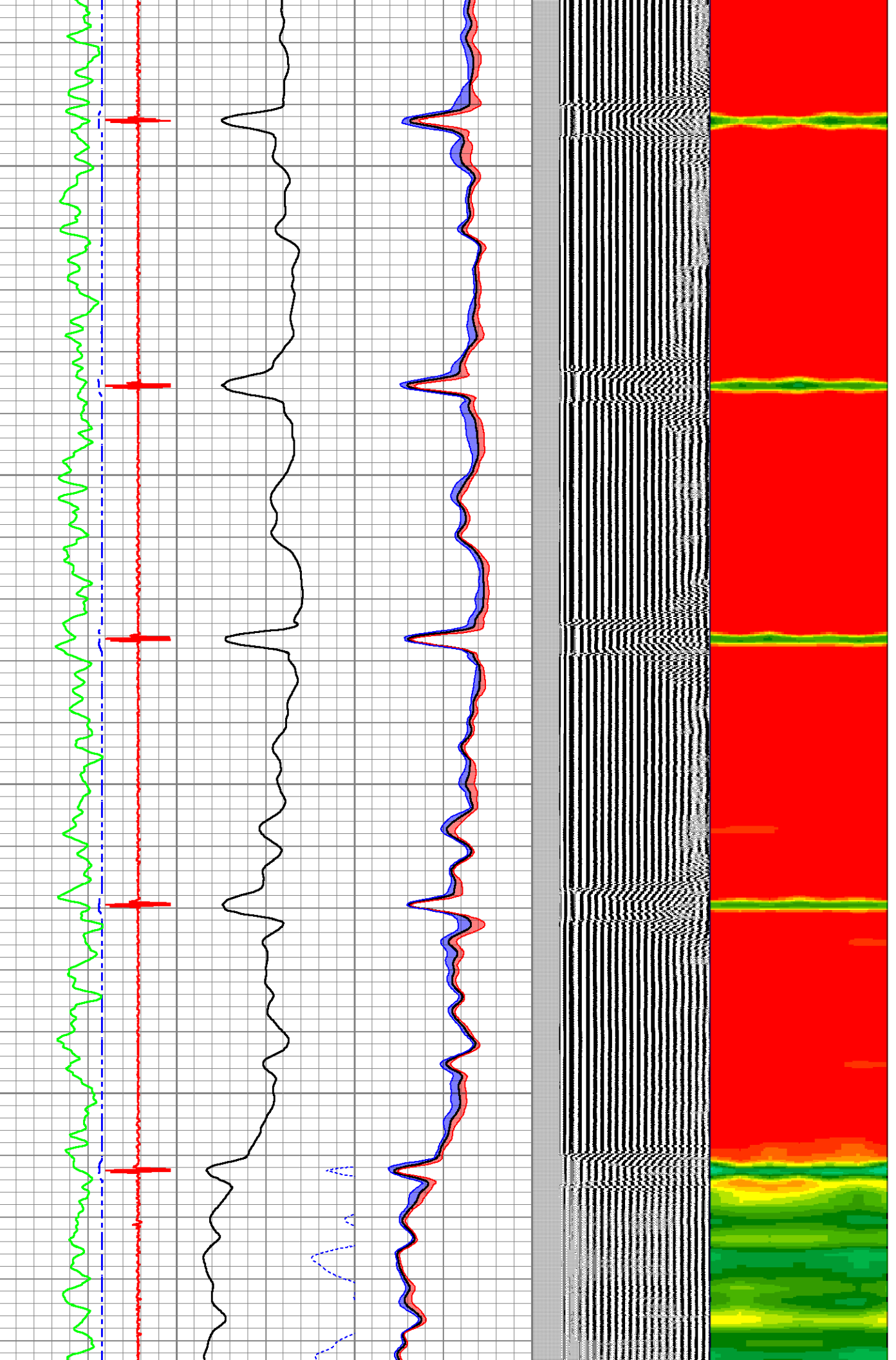


1700

1750

1800

1850



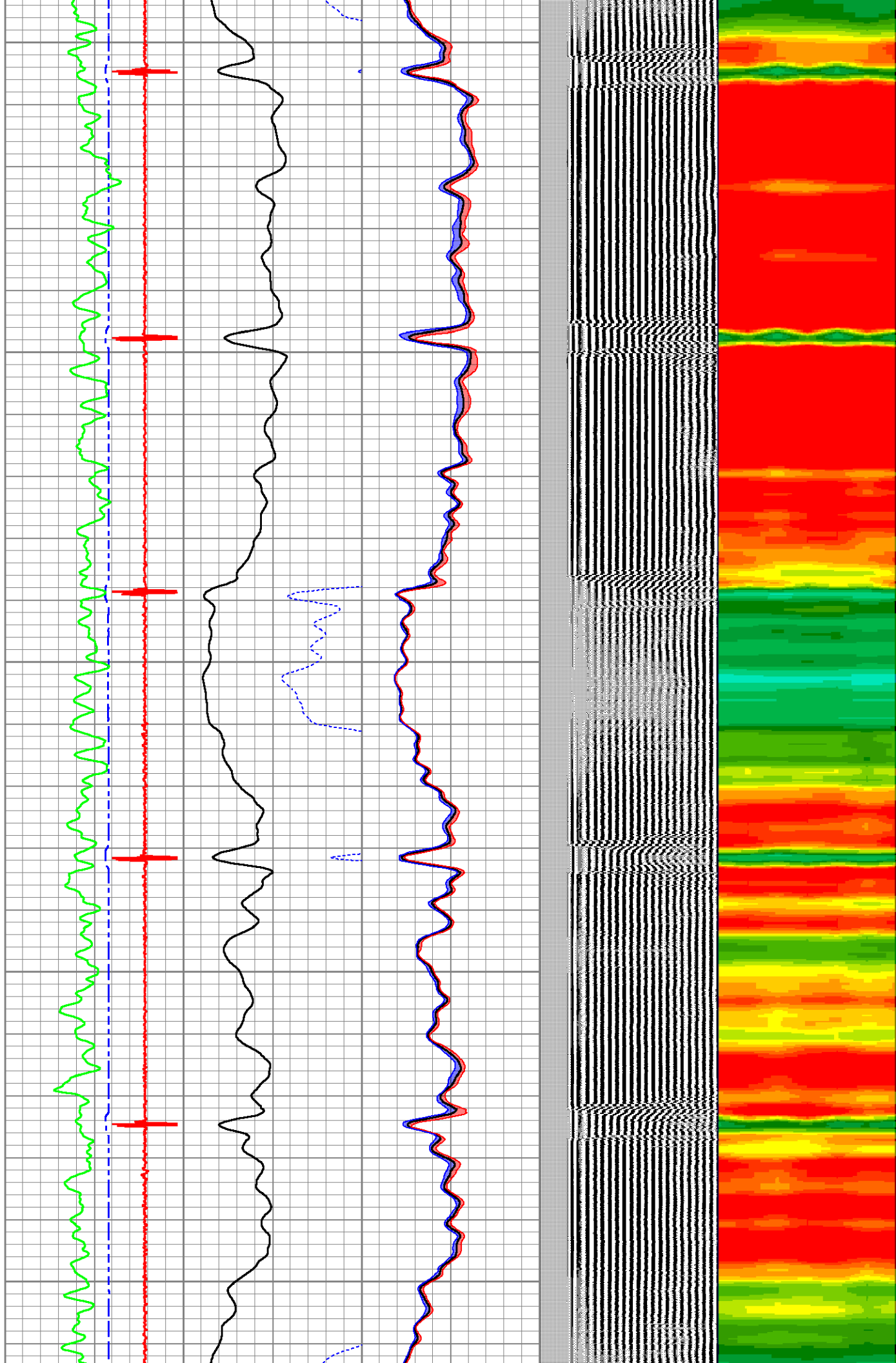
1900

1950

2000

2050

2100

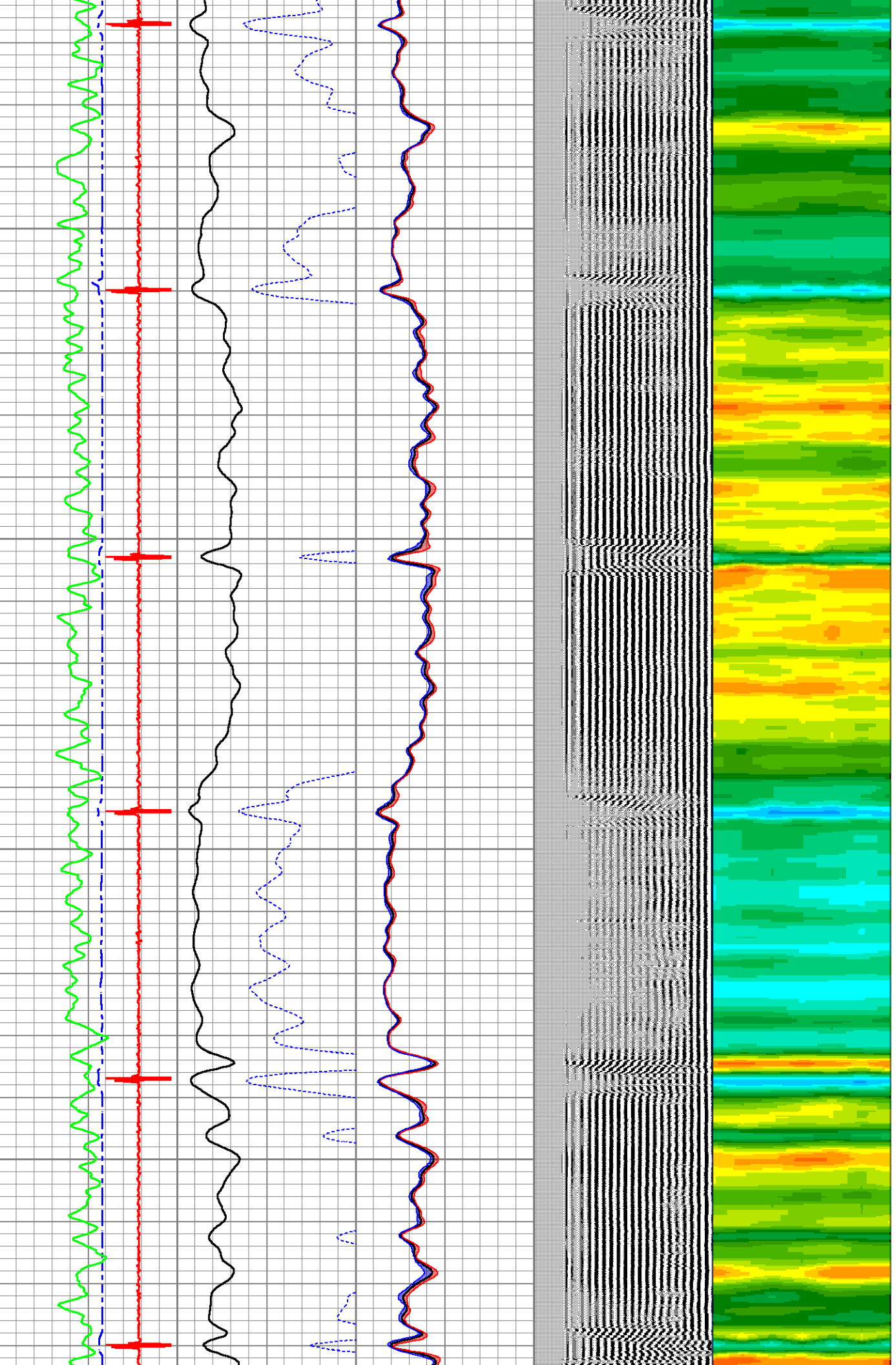


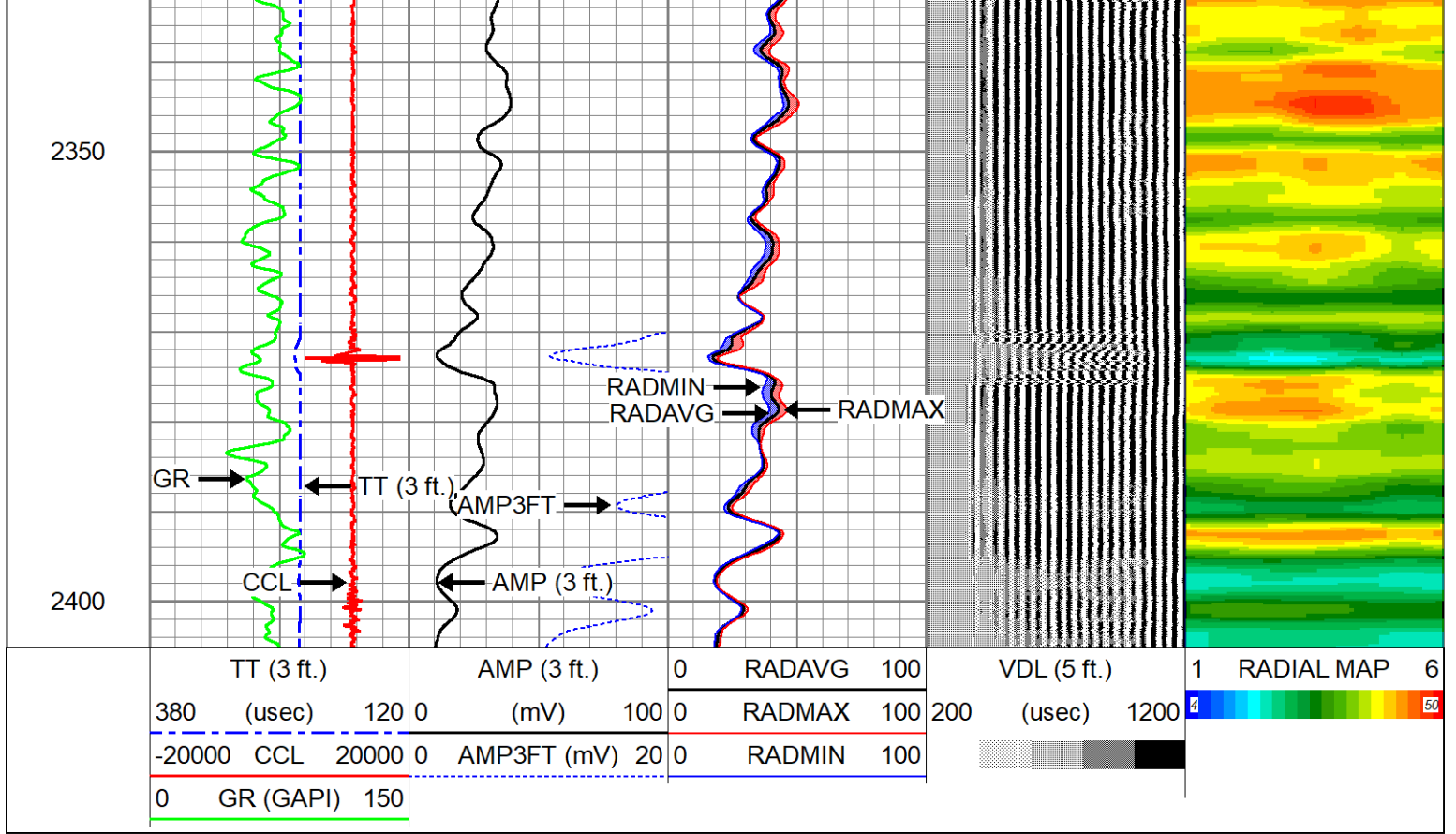
2150

2200

2250

2300





<b>Company</b>	CHEVRON	
<b>Well</b>	UPRR USX Y17-02	
<b>Field</b>	WATTENBERG - 90750	
<b>County</b>	WELD	
<b>State</b>	COLORADO	
		<b>Country</b> U.S.A