



00572254

WELL CORE DIAGRAM

USA BUTLER #2 NW NE Sec. 10 T1N14S R1E 45W

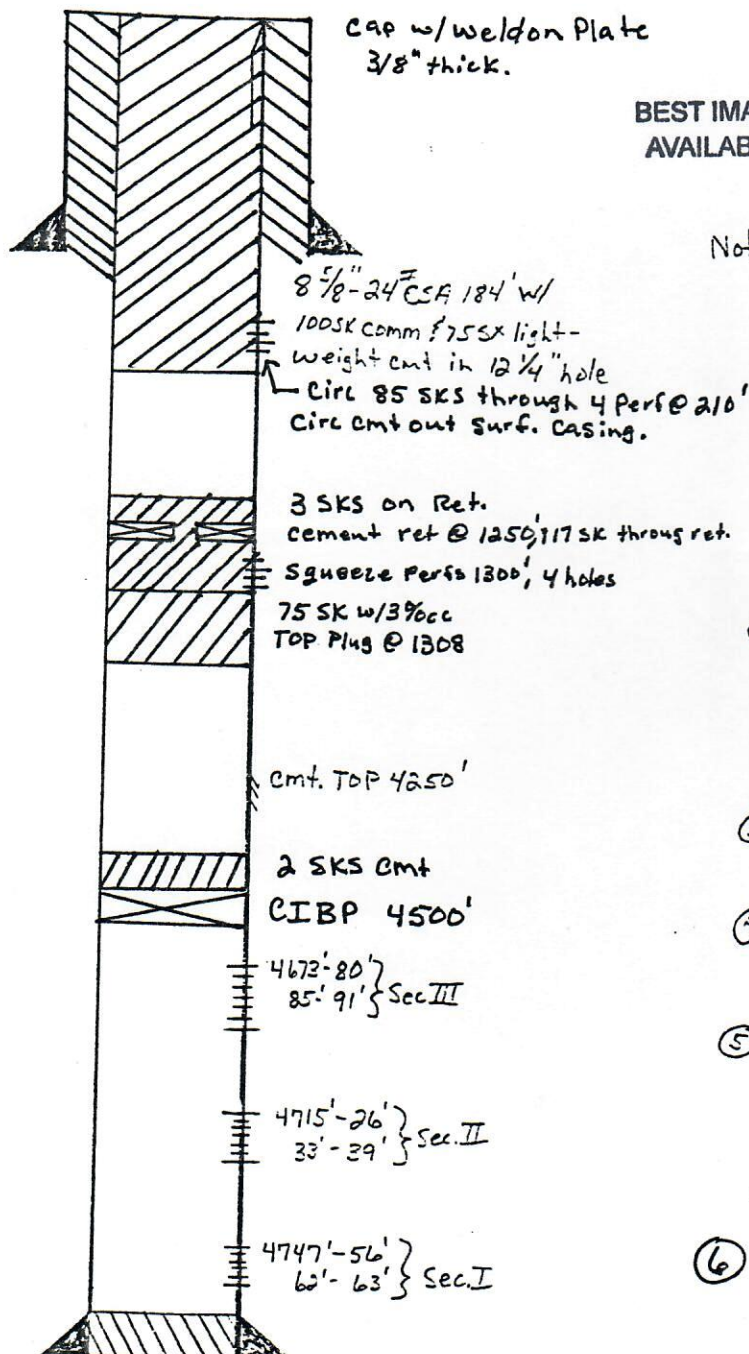
Brandon Field, Kiowa County, Co.

Elevation: 3917 GL

3926 KB

JAN 20 1999

9' Datum

BEST IMAGE
AVAILABLE

5 1/2" 15.5" CSA 4778' w/
125 SKS SD:SD POL in 7 7/8"
hole.

TD = 4780' PRTD = 4765'

Notes: ① Well Completed 9-16-72

Initial Production: 188 BOPD @ 200 BWFD

Initial Treatment: Sec. II 4715'-26' - 1000 gal MOD-20
W/40 RCNE, BD @ 1500 PSI.Sec. III - 4673'-91' - 1000 gal MOD-202 W/40 RCNE, FL
1400 PSI. Reactive sec III W/3,000 gal MOD-202 @ 20
RPM.Sec. II & III 4673'-4739' - 30,000 gal m.y.-T-Frac. @ 20
20/40 Sand, 10,000 #10/20 sand, 300 # Unibeads. Screen
0-5 Perfs.Sec. I - 4747'-63' - 500 gal MOD-202 @ 10 RCNE② 2-9-79 Sec. I, II, III 4673'-4763': Acidize w/
9,000 gal MOD-202 in 3 stages W/6,000 gal
Versageal 400 as spacer between stages.
Production before workover - 19 BOPD @ 168 BWFC
Production after workover - 31 BOPD @ 262 BWFD③ Well SI June 1988 making SECID / 479 BWFD
FL 3776.④ 4-19-89 Put Well on production. Well pumped
24 days. Pumped 100% H₂O. Well SI 5-22-89 w/ Part.
rods.⑤ 2-25-89 Fished Parted 1' rod box 610' FS. Lay down rod
Ran Csg Scraper & Baker Model R Packer. Found Csg
leak between 3776' & surface. Packer failed and
couldn't isolate leak any further. Lay down c-
tbg. Closed well in & put on TA status 8-56-89.⑥ 5-23-96

Set CIBP by wireline @ 4500'

Dump bail 2 SKS cmt on top of CIBP.

⑦ 11-20-98 P/A Well.

DH

11-98'