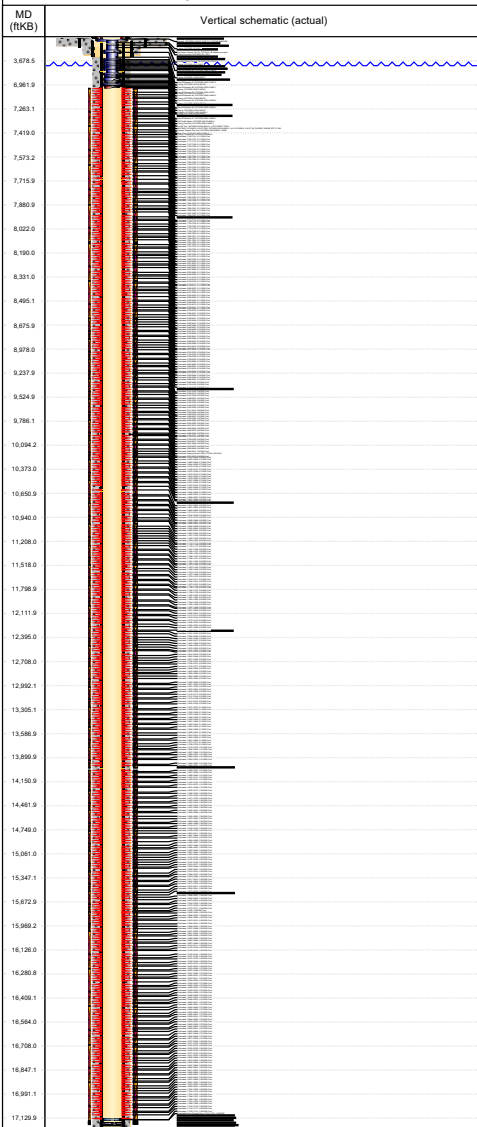




Wellbore Schematic Input Report

Well Name: **WELLS RANCH STATE BB03-676**

Land, Original Hole, 2/22/2023 5:27:40 PM



Well Header

Surface UWI 0512349938	Asset Team	Prod Tree Loc Land
Original RKB (ft) 4,780.00	Orig. KB to Gnd (ft) 30.00	Orig. Spud Date 9/11/2019
Range	Well Sub-Status PR	High Pres N
Directions To Well WCR 68 & WCR 67: EAST 0.25 MILE (WELLS RANCH MAIN GATE), SOUTH 2.8 MILES, SOUTHWEST 0.5 MILE, SOUTH 0.4 MILE, NORTHEAST 0.1 INTO LOCATION.	Latitude (°) 40° 25' 55.647" N	Longitude (°) 104° 25' 44.283" W
Comment		

Congressional Location

Quarter 3 NW	Quarter 4 NW	Section 3	Twnshp 5	Twnshp N N	Range 63	Rng E/W W
-----------------	-----------------	--------------	-------------	---------------	-------------	--------------

Rig Operator

Rig/Unit Supervisor
Charles Kelly

Daily Cost Summary

Sum of Field Est (Cost)

0

Sum of Field Est (Cost)

0

Plug Back Total Depths

Date	PBTD (ftKB)	Method	Com
9/21/2019	17,258	CASING TALLY	

Wellbore Sections

Section Des	Hole Size (in)	Act Top (ftKB)	Act Btm (ftKB)
CONDUCTOR	26	30.0	110.0
SURFACE	13 1/2	110.0	1,968.0
PRODUCTION	8 1/2	1,968.0	17,325.0

Zone Statuses

Zone Name	Status Date	Status
NIOBRARA	3/1/2020	PR

Casing Strings

Conductor, Planned?-N, 110ftKB

Csg Des	Run Date	OD (in)	Wt/Len	Grade	Top Dept	Set Dept
Conductor	7/31/2019	16	36.94	A-52A	30	110

SURFACE, Planned?-N, 1957.8ftKB

Csg Des	Run Date	OD (in)	Wt/Len	Grade	Top Dept	Set Dept
SURFACE	9/11/2019	9 5/8	36.00	J-55	30	1957.8

Production Casing, Planned?-N, 17305.9ftKB

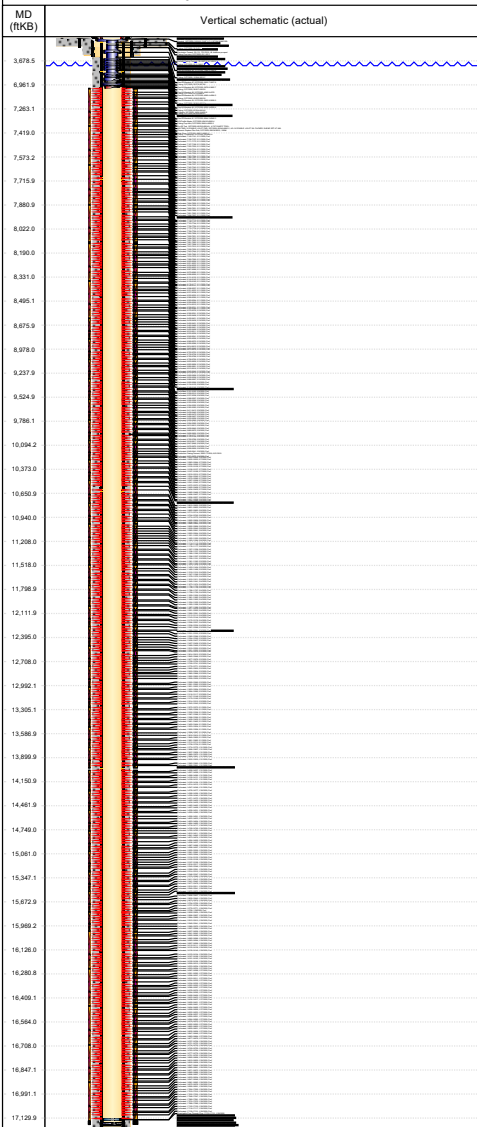
Csg Des	Run Date	OD (in)	Wt/Len	Grade	Top Dept	Set Dept
Production Casing	9/21/2019	5 1/2	17.00	P110 CV	30	17305.9



Wellbore Schematic Input Report

Well Name: WELLS RANCH STATE BB03-676

Land, Original Hole, 2/22/2023 5:27:40 PM



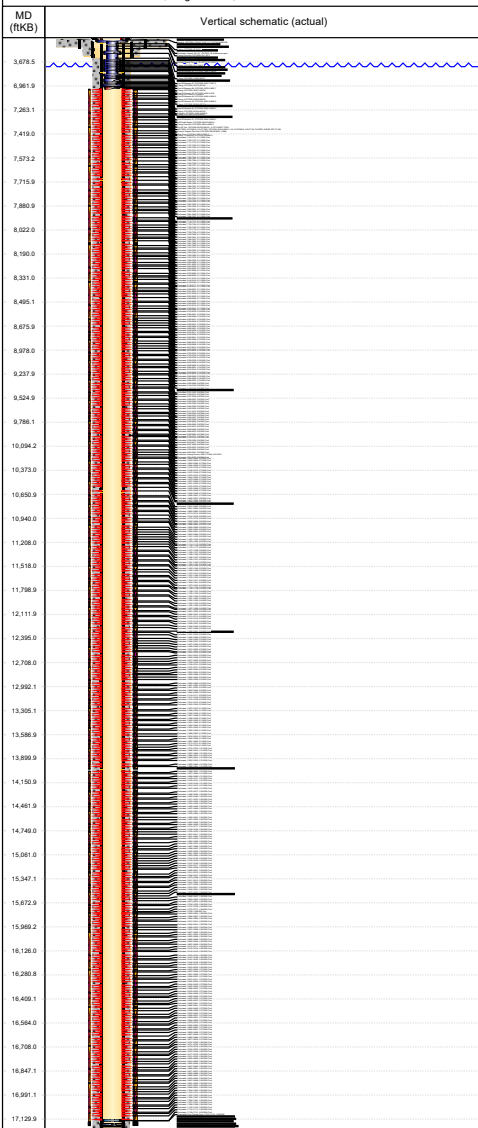
Cement							
Des		Start Date		Top (ftKB)		Btm (ftKB)	
Conductor Cement		7/31/2019		30.0		110.0	
Surface Casing Cement		9/11/2019		30.0		1,957.8	
Production Casing Cement		9/21/2019		2,600.0		17,305.9	
Proposed Cement							
Des				Top (ftKB)		Btm (ftKB)	
Tubing Strings							
Des	Run Date	String	ID (in)	Wt (lb/ft)	Grade	Len (ft)	Set Depth (ft)
Tubing - Production	2/27/2020	2 3/8	2.000	4.70	L-80	6,932.76	6.620.9
Tubing Components							
Item Des	OD (in)	Wt (lb/ft)	Grade	Jts	Len (ft)	Btm (ftKB)	Btm (TVD) (ftKB)
Mandrel	7	4.700	N-80	1	0.50	30.5	30.5
Tubing	2 3/8	4.700	L-80	1	32.51	63.1	63.0
Tubing Pup Joint	2 3/8	4.700	N-80	4	29.16	92.2	92.2
Tubing	2 3/8	4.700	L-80	58	1,854.26	1,946.5	1,946.4
Gas Lift Mandrel #8	3.783	4.700	N-80	1	4.10	1,950.6	1,950.5
Tubing	2 3/8	4.700	L-80	33	1,073.16	3,023.7	3,011.1
Gas Lift Mandrel #7	3.783	4.700	N-80	1	4.10	3,027.8	3,015.1
Tubing	2 3/8	4.700	L-80	20	650.80	3,678.6	3,649.2
Gas Lift Mandrel #6	3.783	4.700	N-80	1	4.10	3,682.7	3,653.2
Tubing	2 3/8	4.700	L-80	21	683.13	4,365.9	4,307.4
Gas Lift Mandrel #5	3.783	4.700	N-80	1	4.10	4,370.0	4,311.4
Tubing	2 3/8	4.700	L-80	19	610.47	4,980.4	4,895.8
Gas Lift Mandrel #4	3.783	4.700	N-80	1	4.10	4,984.5	4,899.7
Tubing	2 3/8	4.700	L-80	19	618.26	5,602.8	5,493.0
Gas Lift Mandrel #3	3.783	4.700	N-80	1	4.10	5,606.9	5,496.9
Tubing	2 3/8	4.700	L-80	20	648.40	6,255.3	6,124.4



Wellbore Schematic Input Report

Well Name: WELLS RANCH STATE BB03-676

Land, Original Hole, 2/22/2023 5:27:41 PM



Tubing Components							
Item Des	OD (in)	Wt (lb/ft)	Grade	Jts	Len (ft)	Btm (ftKB)	Btm (TVD) (ftKB)
Gas Lift Mandrel #2	3.783	4.70	N-8	1	4.10	6,259.4	6,128.5
Tubing	2 3/8	4.70	L-8	6	195.36	6,454.8	6,310.5
X-Nipple	3.04	4.70	N-8	1	1.00	6,455.8	6,311.4
Tubing	2 3/8	4.70	L-8	15	488.44	6,944.2	6,615.9
Gas Lift Mandrel #1	3.783	4.70	N-8	1	4.10	6,948.3	6,617.1
X/N Profile Nipple	3.04	4.70	N-8	1	1.12	6,949.4	6,617.4
Tubing Pup Joint	2 3/8	4.70	N-8	1	4.10	6,953.5	6,618.5
On-Off Tool	4 7/8	4.70	N-8	1	1.34	6,954.9	6,618.9
ANYTME-1X DOUBLE J-SLOT PKR	4 5/8	4.70	N-8	1	7.20	6,962.1	6,620.8
Ceramic Rupture Disc Sub	3 1/16	4.70	N-8	1	0.45	6,962.5	6,620.9
Mule Shoe	3 1/16	4.70	N-8	1	0.30	6,962.8	6,620.9
Other In Hole							
Run Date	Des			Make	OD (in)	Top (ftKB)	Btm (ftKB)
1/26/2020	Dissolvable Flow Through Plug			9ENERGY	4.37	17,130.0	17,131.0
Proposed Other In Hole							
Des		Make		OD (in)	Top (ftKB)	Btm (ftKB)	
Logs							
Date	Type				Depth Top (MD) (ftKB)	Btm (ftKB)	
9/17/2019	MWD				1,968	17,325.0	
12/21/2019	RADIAL SECTOR				24	6,982.0	
Perforation Data							
Linked Zone		Sum of Entered Shot Total	Top (ftKB)	Btm (ftKB)		Date	
NIOBRARA, Original Hole		4	7,140.0	7,141.0		2/11/2020	
NIOBRARA, Original Hole		4	7,156.0	7,157.0		2/11/2020	



Wellbore Schematic Input Report

Well Name: WELLS RANCH STATE BB03-676

Land, Original Hole, 2/22/2023 5:27:41 PM

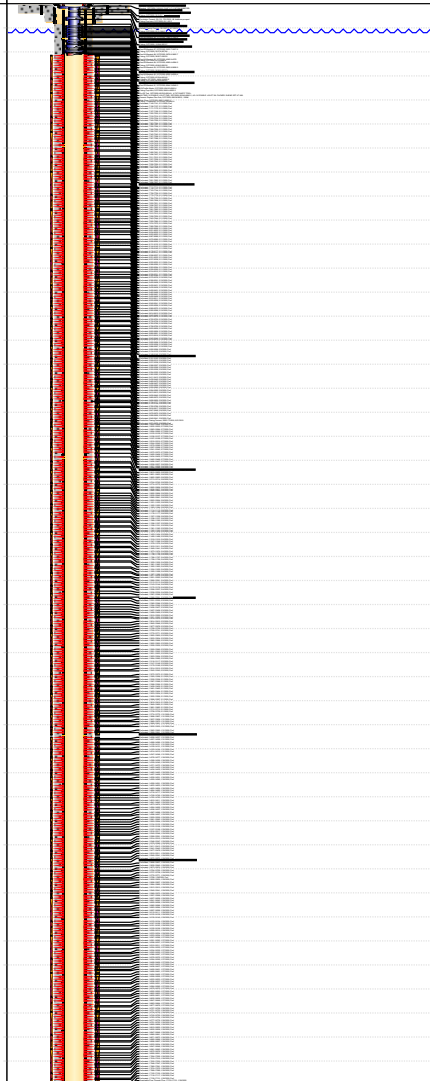
Vertical schematic (actual)		Perforation Data				
MD (ftKB)		Linked Zone	Sum of Entered Shot Total	Top (ftKB)	Btm (ftKB)	Date
3,678.5		NIOBRARA, Original Hole	4	7,171.0	7,172.0	2/11/2020
6,961.9		NIOBRARA, Original Hole	4	7,187.0	7,188.0	2/11/2020
7,263.1		NIOBRARA, Original Hole	4	7,187.0	7,188.0	2/11/2020
7,419.0		NIOBRARA, Original Hole	4	7,202.0	7,203.0	2/11/2020
7,573.2		NIOBRARA, Original Hole	4	7,218.0	7,219.0	2/11/2020
7,715.9		NIOBRARA, Original Hole	4	7,218.0	7,219.0	2/11/2020
7,860.9		NIOBRARA, Original Hole	4	7,233.0	7,234.0	2/11/2020
8,022.0		NIOBRARA, Original Hole	4	7,249.0	7,250.0	2/11/2020
8,190.0		NIOBRARA, Original Hole	4	7,263.0	7,264.0	2/11/2020
8,331.0		NIOBRARA, Original Hole	4	7,280.0	7,281.0	2/11/2020
8,495.1		NIOBRARA, Original Hole	4	7,295.0	7,296.0	2/11/2020
8,675.9		NIOBRARA, Original Hole	4	7,308.0	7,309.0	2/11/2020
8,978.0		NIOBRARA, Original Hole	4	7,326.0	7,327.0	2/11/2020
9,237.9		NIOBRARA, Original Hole	4	7,342.0	7,343.0	2/11/2020
9,524.9		NIOBRARA, Original Hole	4	7,357.0	7,358.0	2/11/2020
9,786.1		NIOBRARA, Original Hole	4	7,387.0	7,388.0	2/11/2020
10,094.2		NIOBRARA, Original Hole	4	7,405.0	7,406.0	2/11/2020
10,373.0		NIOBRARA, Original Hole	4	7,418.0	7,419.0	2/11/2020
10,650.9		NIOBRARA, Original Hole	4	7,434.0	7,435.0	2/11/2020
10,940.0		NIOBRARA, Original Hole	4	7,434.0	7,435.0	2/11/2020
11,208.0		NIOBRARA, Original Hole	4	7,450.0	7,451.0	2/11/2020
11,519.0		NIOBRARA, Original Hole	4	7,465.0	7,466.0	2/11/2020
11,798.9		NIOBRARA, Original Hole	4	7,480.0	7,481.0	2/11/2020
12,111.9		NIOBRARA, Original Hole	4	7,496.0	7,497.0	2/11/2020
12,395.0		NIOBRARA, Original Hole	4	7,511.0	7,512.0	2/11/2020
12,708.0		NIOBRARA, Original Hole	4	7,527.0	7,528.0	2/11/2020
12,992.1		NIOBRARA, Original Hole	4	7,542.0	7,543.0	2/11/2020
13,305.1		NIOBRARA, Original Hole	4	7,558.0	7,559.0	2/11/2020
13,586.9		NIOBRARA, Original Hole	4	7,573.0	7,574.0	2/11/2020
13,899.9		NIOBRARA, Original Hole	4	7,589.0	7,590.0	2/11/2020
14,190.9		NIOBRARA, Original Hole	4	7,604.0	7,605.0	2/11/2020
14,461.9		NIOBRARA, Original Hole	4	7,604.0	7,605.0	2/11/2020
14,740.0		NIOBRARA, Original Hole	4	7,634.0	7,635.0	2/11/2020
15,061.0		NIOBRARA, Original Hole	4	7,650.0	7,651.0	2/11/2020
15,347.1		NIOBRARA, Original Hole	4	7,665.0	7,666.0	2/11/2020
15,672.9		NIOBRARA, Original Hole	4	7,681.0	7,682.0	2/11/2020
15,969.2		NIOBRARA, Original Hole	4	7,696.0	7,697.0	2/11/2020
16,126.0		NIOBRARA, Original Hole	4	7,712.0	7,713.0	2/11/2020
16,280.8		NIOBRARA, Original Hole	4	7,730.0	7,731.0	2/11/2020
16,408.1		NIOBRARA, Original Hole	4	7,743.0	7,744.0	2/11/2020
16,564.0		NIOBRARA, Original Hole	4	7,743.0	7,744.0	2/11/2020
16,708.0		NIOBRARA, Original Hole	4	7,758.0	7,759.0	2/11/2020
16,847.1		NIOBRARA, Original Hole	4	7,775.0	7,776.0	2/11/2020
16,991.1		NIOBRARA, Original Hole	4	7,775.0	7,776.0	2/11/2020
17,129.0		NIOBRARA, Original Hole	4	7,789.0	7,790.0	2/11/2020



Wellbore Schematic Input Report

Well Name: **WELLS RANCH STATE BB03-676**

Land, Original Hole, 2/22/2023 5:27:41 PM

Vertical schematic (actual)		Perforation Data				
MD (ftKB)		Linked Zone	Sum of Entered Shot Total	Top (ftKB)	Btm (ftKB)	Date
3,678.5		NIOBRARA, Original Hole	4	7,805.0	7,806.0	2/11/2020
6,961.9		NIOBRARA, Original Hole	4	7,820.0	7,821.0	2/11/2020
7,263.1		NIOBRARA, Original Hole	4	7,836.0	7,837.0	2/11/2020
7,419.0		NIOBRARA, Original Hole	4	7,836.0	7,837.0	2/11/2020
7,573.2		NIOBRARA, Original Hole	4	7,851.0	7,852.0	2/11/2020
7,715.9		NIOBRARA, Original Hole	4	7,881.0	7,882.0	2/11/2020
7,880.9		NIOBRARA, Original Hole	4	7,897.0	7,898.0	2/11/2020
8,022.0		NIOBRARA, Original Hole	4	7,912.0	7,913.0	2/11/2020
8,190.0		NIOBRARA, Original Hole	4	7,928.0	7,929.0	2/11/2020
8,331.0		NIOBRARA, Original Hole	4	7,943.0	7,944.0	2/11/2020
8,495.1		NIOBRARA, Original Hole	4	7,959.0	7,960.0	2/11/2020
8,675.9		NIOBRARA, Original Hole	4	7,974.0	7,975.0	2/11/2020
8,978.0		NIOBRARA, Original Hole	4	7,989.0	7,990.0	2/11/2020
9,237.9		NIOBRARA, Original Hole	4	8,005.0	8,006.0	2/11/2020
9,524.9		NIOBRARA, Original Hole	4	8,021.0	8,022.0	2/11/2020
9,786.1		NIOBRARA, Original Hole	4	8,034.0	8,035.0	2/11/2020
10,094.2		NIOBRARA, Original Hole	4	8,052.0	8,053.0	2/11/2020
10,373.0		NIOBRARA, Original Hole	4	8,067.0	8,068.0	2/11/2020
10,650.9		NIOBRARA, Original Hole	4	8,079.0	8,080.0	2/11/2020
10,940.0		NIOBRARA, Original Hole	4	8,098.0	8,099.0	2/11/2020
11,208.0		NIOBRARA, Original Hole	4	8,131.0	8,132.0	2/11/2020
11,518.0		NIOBRARA, Original Hole	4	8,144.0	8,145.0	2/11/2020
11,798.9		NIOBRARA, Original Hole	4	8,159.0	8,160.0	2/11/2020
12,111.9		NIOBRARA, Original Hole	4	8,176.0	8,177.0	2/11/2020
12,395.0		NIOBRARA, Original Hole	4	8,190.0	8,191.0	2/11/2020
12,708.0		NIOBRARA, Original Hole	4	8,206.0	8,207.0	2/11/2020
12,992.1		NIOBRARA, Original Hole	4	8,221.0	8,222.0	2/11/2020
13,305.1		NIOBRARA, Original Hole	4	8,237.0	8,238.0	2/11/2020
13,586.9		NIOBRARA, Original Hole	4	8,252.0	8,253.0	2/11/2020
13,899.9		NIOBRARA, Original Hole	4	8,268.0	8,269.0	2/11/2020
14,190.9		NIOBRARA, Original Hole	4	8,283.0	8,284.0	2/11/2020
14,481.9		NIOBRARA, Original Hole	4	8,299.0	8,300.0	2/11/2020
14,740.0		NIOBRARA, Original Hole	4	8,314.0	8,315.0	2/11/2020
15,051.0		NIOBRARA, Original Hole	4	8,330.0	8,331.0	2/11/2020
15,347.1		NIOBRARA, Original Hole	4	8,345.0	8,346.0	2/11/2020
15,672.9		NIOBRARA, Original Hole	4	8,375.0	8,376.0	2/10/2020
15,969.2		NIOBRARA, Original Hole	4	8,390.0	8,391.0	2/10/2020
16,126.0		NIOBRARA, Original Hole	4	8,405.0	8,406.0	2/10/2020
16,280.8		NIOBRARA, Original Hole	4	8,420.0	8,421.0	2/10/2020
16,408.1		NIOBRARA, Original Hole	4	8,435.0	8,436.0	2/10/2020
16,564.0		NIOBRARA, Original Hole	4			
16,708.0		NIOBRARA, Original Hole	4			
16,847.1		NIOBRARA, Original Hole	4			
16,991.1		NIOBRARA, Original Hole	4			
17,129.0		NIOBRARA, Original Hole	4			



Wellbore Schematic Input Report

Well Name: **WELLS RANCH STATE BB03-676**

Land, Original Hole, 2/22/2023 5:27:41 PM

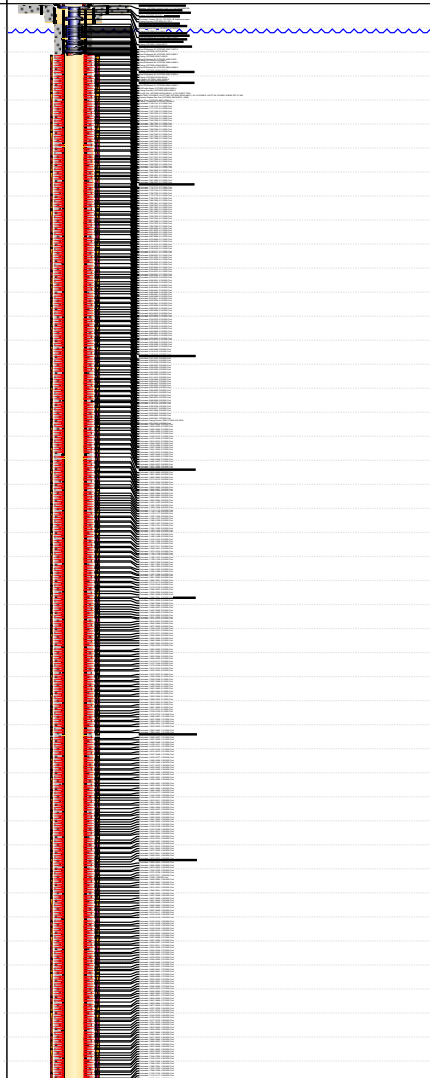
MD (ftKB)		Perforation Data				
Vertical schematic (actual)		Linked Zone	Sum of Entered Shot Total			Date
				Top (ftKB)	Btm (ftKB)	
3,678.5		NIOBRARA, Original Hole	4	8,450.0	8,451.0	2/10/2020
6,961.9		NIOBRARA, Original Hole	4	8,465.0	8,466.0	2/10/2020
7,263.1		NIOBRARA, Original Hole	4	8,480.0	8,481.0	2/10/2020
7,419.0		NIOBRARA, Original Hole	4	8,480.0	8,481.0	2/10/2020
7,573.2		NIOBRARA, Original Hole	4	8,495.0	8,496.0	2/10/2020
7,715.9		NIOBRARA, Original Hole	4	8,495.0	8,496.0	2/10/2020
7,880.9		NIOBRARA, Original Hole	4	8,510.0	8,511.0	2/10/2020
8,022.0		NIOBRARA, Original Hole	4	8,525.0	8,526.0	2/10/2020
8,190.0		NIOBRARA, Original Hole	4	8,540.0	8,541.0	2/10/2020
8,331.0		NIOBRARA, Original Hole	4	8,555.0	8,556.0	2/10/2020
8,495.1		NIOBRARA, Original Hole	4	8,569.0	8,570.0	2/10/2020
8,675.9		NIOBRARA, Original Hole	4	8,585.0	8,586.0	2/10/2020
8,978.0		NIOBRARA, Original Hole	4	8,614.0	8,615.0	2/10/2020
9,237.9		NIOBRARA, Original Hole	4	8,645.0	8,646.0	2/10/2020
9,524.9		NIOBRARA, Original Hole	4	8,675.0	8,676.0	2/10/2020
9,786.1		NIOBRARA, Original Hole	4	8,702.0	8,703.0	2/10/2020
10,094.2		NIOBRARA, Original Hole	4	8,735.0	8,736.0	2/10/2020
10,373.0		NIOBRARA, Original Hole	4	8,735.0	8,736.0	2/10/2020
10,650.9		NIOBRARA, Original Hole	4	8,765.0	8,766.0	2/10/2020
10,940.0		NIOBRARA, Original Hole	4	8,798.0	8,799.0	2/10/2020
11,208.0		NIOBRARA, Original Hole	4	8,825.0	8,826.0	2/10/2020
11,518.0		NIOBRARA, Original Hole	4	8,855.0	8,856.0	2/10/2020
11,798.9		NIOBRARA, Original Hole	4	8,880.0	8,881.0	2/10/2020
12,111.9		NIOBRARA, Original Hole	4	8,915.0	8,916.0	2/10/2020
12,395.0		NIOBRARA, Original Hole	4	8,945.0	8,946.0	2/10/2020
12,708.0		NIOBRARA, Original Hole	4	8,978.0	8,979.0	2/10/2020
12,992.1		NIOBRARA, Original Hole	4	9,005.0	9,006.0	2/10/2020
13,305.1		NIOBRARA, Original Hole	4	9,035.0	9,036.0	2/10/2020
13,586.9		NIOBRARA, Original Hole	4	9,066.0	9,067.0	2/10/2020
13,899.9		NIOBRARA, Original Hole	4	9,066.0	9,067.0	2/10/2020
14,150.9		NIOBRARA, Original Hole	4	9,095.0	9,096.0	2/9/2020
14,481.9		NIOBRARA, Original Hole	4	9,124.0	9,125.0	2/9/2020
14,740.0		NIOBRARA, Original Hole	4	9,148.0	9,149.0	2/9/2020
15,081.0		NIOBRARA, Original Hole	4	9,181.0	9,182.0	2/9/2020
15,347.1		NIOBRARA, Original Hole	4	9,209.0	9,210.0	2/9/2020
15,672.9		NIOBRARA, Original Hole	4	9,237.0	9,238.0	2/9/2020
15,969.2		NIOBRARA, Original Hole	4	9,266.0	9,267.0	2/9/2020
16,126.0		NIOBRARA, Original Hole	4	9,266.0	9,267.0	2/9/2020
16,280.8		NIOBRARA, Original Hole	4	9,295.0	9,296.0	2/9/2020
16,408.1		NIOBRARA, Original Hole	4	9,325.0	9,326.0	2/9/2020
16,564.0	NIOBRARA, Original Hole	4	9,354.0	9,355.0	2/9/2020	
16,708.0	NIOBRARA, Original Hole	4	9,382.0	9,383.0	2/9/2020	
16,847.1	NIOBRARA, Original Hole	4	9,411.0	9,412.0	2/9/2020	
16,991.1	NIOBRARA, Original Hole	4	9,439.0	9,440.0	2/9/2020	
17,129.0	NIOBRARA, Original Hole	4	9,439.0	9,440.0	2/9/2020	



Wellbore Schematic Input Report

Well Name: WELLS RANCH STATE BB03-676

Land, Original Hole, 2/22/2023 5:27:41 PM

Vertical schematic (actual)		Perforation Data				
MD (ftKB)		Linked Zone	Sum of Entered Shot Total	Perforation Data		Date
				Top (ftKB)	Btm (ftKB)	
3,678.5		NIOBRARA, Original Hole	4	9,469.0	9,470.0	2/9/2020
6,961.9		NIOBRARA, Original Hole	4	9,496.0	9,497.0	2/9/2020
7,263.1		NIOBRARA, Original Hole	4	9,525.0	9,526.0	2/9/2020
7,419.0		NIOBRARA, Original Hole	4	9,559.0	9,560.0	2/8/2020
7,573.2		NIOBRARA, Original Hole	4	9,584.0	9,585.0	2/8/2020
7,715.9		NIOBRARA, Original Hole	4	9,612.0	9,613.0	2/8/2020
7,880.9		NIOBRARA, Original Hole	4	9,639.0	9,640.0	2/8/2020
8,022.0		NIOBRARA, Original Hole	4	9,669.0	9,670.0	2/8/2020
8,190.0		NIOBRARA, Original Hole	4	9,698.0	9,699.0	2/8/2020
8,331.0		NIOBRARA, Original Hole	4	9,726.0	9,727.0	2/8/2020
8,495.1		NIOBRARA, Original Hole	4	9,755.0	9,756.0	2/8/2020
8,675.9		NIOBRARA, Original Hole	4	9,785.0	9,786.0	2/8/2020
8,878.0		NIOBRARA, Original Hole	4	9,816.0	9,817.0	2/8/2020
9,237.9		NIOBRARA, Original Hole	4	9,847.0	9,848.0	2/8/2020
9,524.9		NIOBRARA, Original Hole	4	9,878.0	9,879.0	2/8/2020
9,786.1		NIOBRARA, Original Hole	4	9,908.0	9,909.0	2/8/2020
10,094.2		NIOBRARA, Original Hole	4	9,940.0	9,941.0	2/8/2020
10,373.0		NIOBRARA, Original Hole	4	9,971.0	9,972.0	2/8/2020
10,650.9		NIOBRARA, Original Hole	4	10,003.0	10,004.0	2/8/2020
10,940.0		NIOBRARA, Original Hole	4	10,032.0	10,033.0	2/7/2020
11,208.0		NIOBRARA, Original Hole	4	10,063.0	10,064.0	2/7/2020
11,519.0		NIOBRARA, Original Hole	4	10,094.0	10,095.0	2/7/2020
11,798.9		NIOBRARA, Original Hole	4	10,125.0	10,126.0	2/7/2020
12,111.9		NIOBRARA, Original Hole	4	10,156.0	10,157.0	2/7/2020
12,395.0		NIOBRARA, Original Hole	4	10,187.0	10,188.0	2/7/2020
12,708.0		NIOBRARA, Original Hole	4	10,218.0	10,219.0	2/7/2020
12,992.1		NIOBRARA, Original Hole	4	10,244.0	10,245.0	2/7/2020
13,305.1		NIOBRARA, Original Hole	4	10,279.0	10,280.0	2/7/2020
13,586.9		NIOBRARA, Original Hole	4	10,307.0	10,308.0	2/7/2020
13,899.9		NIOBRARA, Original Hole	4	10,341.0	10,342.0	2/7/2020
14,190.9		NIOBRARA, Original Hole	4	10,372.0	10,373.0	2/7/2020
14,461.9		NIOBRARA, Original Hole	4	10,405.0	10,406.0	2/7/2020
14,740.0		NIOBRARA, Original Hole	4	10,434.0	10,435.0	2/7/2020
15,061.0		NIOBRARA, Original Hole	4	10,465.0	10,466.0	2/7/2020
15,347.1		NIOBRARA, Original Hole	4	10,496.0	10,497.0	2/7/2020
15,672.9		NIOBRARA, Original Hole	4	10,526.0	10,527.0	2/6/2020
15,969.2		NIOBRARA, Original Hole	4	10,557.0	10,558.0	2/6/2020
16,126.0		NIOBRARA, Original Hole	4	10,588.0	10,589.0	2/6/2020
16,280.8		NIOBRARA, Original Hole	4	10,619.0	10,620.0	2/6/2020
16,408.1		NIOBRARA, Original Hole	4			
16,564.0		NIOBRARA, Original Hole	4			
16,708.0		NIOBRARA, Original Hole	4			
16,847.1		NIOBRARA, Original Hole	4			
16,991.1		NIOBRARA, Original Hole	4			
17,129.0		NIOBRARA, Original Hole	4			



Wellbore Schematic Input Report

Well Name: WELLS RANCH STATE BB03-676

Land, Original Hole, 2/22/2023 5:27:42 PM

Vertical schematic (actual)		Perforation Data				
MD (ftKB)		Linked Zone	Sum of Entered Shot Total	Top (ftKB)	Btm (ftKB)	Date
3,678.5		NIOBRARA, Original Hole	4	10,651.0	10,652.0	2/6/2020
6,961.9		NIOBRARA, Original Hole	4	10,682.0	10,683.0	2/6/2020
7,263.1		NIOBRARA, Original Hole	4	10,713.0	10,714.0	2/6/2020
7,419.0		NIOBRARA, Original Hole	4	10,744.0	10,745.0	2/6/2020
7,573.2		NIOBRARA, Original Hole	4	10,774.0	10,775.0	2/6/2020
7,715.9		NIOBRARA, Original Hole	4	10,805.0	10,806.0	2/6/2020
7,880.9		NIOBRARA, Original Hole	4	10,836.0	10,837.0	2/6/2020
8,022.0		NIOBRARA, Original Hole	4	10,868.0	10,869.0	2/6/2020
8,190.0		NIOBRARA, Original Hole	4	10,895.0	10,896.0	2/6/2020
8,331.0		NIOBRARA, Original Hole	4	10,939.0	10,940.0	2/6/2020
8,495.1		NIOBRARA, Original Hole	4	10,960.0	10,961.0	2/6/2020
8,675.9		NIOBRARA, Original Hole	4	10,993.0	10,994.0	2/6/2020
8,878.0		NIOBRARA, Original Hole	4	11,021.0	11,022.0	2/6/2020
9,237.9		NIOBRARA, Original Hole	4	11,052.0	11,053.0	2/6/2020
9,524.9		NIOBRARA, Original Hole	4	11,083.0	11,084.0	2/6/2020
9,786.1		NIOBRARA, Original Hole	4	11,114.0	11,115.0	2/6/2020
10,094.2		NIOBRARA, Original Hole	4	11,145.0	11,146.0	2/6/2020
10,373.0		NIOBRARA, Original Hole	4	11,176.0	11,177.0	2/6/2020
10,650.9		NIOBRARA, Original Hole	4	11,207.0	11,208.0	2/6/2020
10,940.0		NIOBRARA, Original Hole	4	11,236.0	11,237.0	2/6/2020
11,208.0		NIOBRARA, Original Hole	4	11,268.0	11,269.0	2/5/2020
11,518.0		NIOBRARA, Original Hole	4	11,296.0	11,297.0	2/5/2020
11,798.9		NIOBRARA, Original Hole	4	11,330.0	11,331.0	2/5/2020
12,111.9		NIOBRARA, Original Hole	4	11,361.0	11,362.0	2/5/2020
12,395.0		NIOBRARA, Original Hole	4	11,392.0	11,393.0	2/5/2020
12,708.0		NIOBRARA, Original Hole	4	11,423.0	11,424.0	2/5/2020
12,992.1		NIOBRARA, Original Hole	4	11,453.0	11,454.0	2/5/2020
13,305.1		NIOBRARA, Original Hole	4	11,485.0	11,486.0	2/5/2020
13,586.9		NIOBRARA, Original Hole	4	11,518.0	11,519.0	2/4/2020
13,899.9		NIOBRARA, Original Hole	4	11,547.0	11,548.0	2/4/2020
14,190.9		NIOBRARA, Original Hole	4	11,578.0	11,579.0	2/4/2020
14,461.9		NIOBRARA, Original Hole	4	11,610.0	11,611.0	2/4/2020
14,740.0		NIOBRARA, Original Hole	4	11,640.0	11,641.0	2/4/2020
15,061.0		NIOBRARA, Original Hole	4	11,673.0	11,674.0	2/4/2020
15,347.1		NIOBRARA, Original Hole	4	11,704.0	11,705.0	2/4/2020
15,672.9		NIOBRARA, Original Hole	4	11,738.0	11,739.0	2/4/2020
15,969.2		NIOBRARA, Original Hole	4	11,766.0	11,767.0	2/4/2020
16,126.0		NIOBRARA, Original Hole	4	11,798.0	11,799.0	2/4/2020
16,280.8		NIOBRARA, Original Hole	4	11,829.0	11,830.0	2/4/2020
16,408.1		NIOBRARA, Original Hole				
16,564.0		NIOBRARA, Original Hole				
16,708.0		NIOBRARA, Original Hole				
16,847.1		NIOBRARA, Original Hole				
16,991.1		NIOBRARA, Original Hole				
17,129.9		NIOBRARA, Original Hole				



Wellbore Schematic Input Report

Well Name: **WELLS RANCH STATE BB03-676**

Land, Original Hole, 2/22/2023 5:27:42 PM

MD (ftKB)	Vertical schematic (actual)	Perforation Data				
		Linked Zone	Sum of Entered Shot Total	Top (ftKB)	Btm (ftKB)	Date
3,678.5		NIOBRARA, Original Hole	4	11,861.0	11,862.0	2/4/2020
6,961.9		NIOBRARA, Original Hole	4	11,892.0	11,893.0	2/4/2020
7,263.1		NIOBRARA, Original Hole	4	11,924.0	11,925.0	2/4/2020
7,419.0		NIOBRARA, Original Hole	4	11,955.0	11,956.0	2/4/2020
7,573.2		NIOBRARA, Original Hole	4	11,987.0	11,988.0	2/4/2020
7,715.9		NIOBRARA, Original Hole	4	12,017.0	12,018.0	2/4/2020
7,860.9		NIOBRARA, Original Hole	4	12,051.0	12,052.0	2/4/2020
8,022.0		NIOBRARA, Original Hole	4	12,080.0	12,081.0	2/4/2020
8,190.0		NIOBRARA, Original Hole	4	12,112.0	12,113.0	2/4/2020
8,331.0		NIOBRARA, Original Hole	4	12,143.0	12,144.0	2/4/2020
8,495.1		NIOBRARA, Original Hole	4	12,175.0	12,176.0	2/4/2020
8,675.9		NIOBRARA, Original Hole	4	12,206.0	12,207.0	2/4/2020
8,878.0		NIOBRARA, Original Hole	4	12,238.0	12,239.0	2/4/2020
9,237.9		NIOBRARA, Original Hole	4	12,267.0	12,268.0	2/3/2020
9,524.9		NIOBRARA, Original Hole	4	12,300.0	12,301.0	2/3/2020
9,786.1		NIOBRARA, Original Hole	4	12,331.0	12,332.0	2/3/2020
10,094.2		NIOBRARA, Original Hole	4	12,365.0	12,366.0	2/3/2020
10,373.0		NIOBRARA, Original Hole	4	12,394.0	12,395.0	2/3/2020
10,650.9		NIOBRARA, Original Hole	4	12,426.0	12,427.0	2/3/2020
10,940.0		NIOBRARA, Original Hole	4	12,457.0	12,458.0	2/3/2020
11,208.0		NIOBRARA, Original Hole	4	12,489.0	12,490.0	2/3/2020
11,518.0		NIOBRARA, Original Hole	4	12,519.0	12,520.0	2/2/2020
11,798.9		NIOBRARA, Original Hole	4	12,551.0	12,552.0	2/2/2020
12,111.9		NIOBRARA, Original Hole	4	12,578.0	12,579.0	2/2/2020
12,395.0		NIOBRARA, Original Hole	4	12,614.0	12,615.0	2/2/2020
12,708.0		NIOBRARA, Original Hole	4	12,645.0	12,646.0	2/2/2020
12,992.1		NIOBRARA, Original Hole	4	12,677.0	12,678.0	2/2/2020
13,305.1		NIOBRARA, Original Hole	4	12,708.0	12,709.0	2/2/2020
13,586.9		NIOBRARA, Original Hole	4	12,740.0	12,741.0	2/2/2020
13,899.9		NIOBRARA, Original Hole	4	12,770.0	12,771.0	2/2/2020
14,190.9		NIOBRARA, Original Hole	4	12,802.0	12,803.0	2/2/2020
14,461.9		NIOBRARA, Original Hole	4	12,833.0	12,834.0	2/2/2020
14,740.0		NIOBRARA, Original Hole	4	12,865.0	12,866.0	2/2/2020
15,061.0		NIOBRARA, Original Hole	4	12,892.0	12,893.0	2/2/2020
15,347.1		NIOBRARA, Original Hole	4	12,928.0	12,929.0	2/2/2020
15,672.9		NIOBRARA, Original Hole	4	12,959.0	12,960.0	2/2/2020
15,969.2		NIOBRARA, Original Hole	4	12,991.0	12,992.0	2/2/2020
16,126.0		NIOBRARA, Original Hole	4	13,021.0	13,022.0	2/2/2020
16,280.8		NIOBRARA, Original Hole	4	13,053.0	13,054.0	2/2/2020
16,408.1						
16,564.0						
16,708.0						
16,847.1						
16,991.1						
17,129.0						



Wellbore Schematic Input Report

Well Name: WELLS RANCH STATE BB03-676

Land, Original Hole, 2/22/2023 5:27:42 PM

Vertical schematic (actual)		Perforation Data				
MD (ftKB)		Linked Zone	Sum of Entered Shot Total	Top (ftKB)	Btm (ftKB)	Date
3,678.5		NIOBRARA, Original Hole	4	13,084.0	13,085.0	2/2/2020
6,961.9		NIOBRARA, Original Hole	4	13,116.0	13,117.0	2/2/2020
7,263.1		NIOBRARA, Original Hole	4	13,147.0	13,148.0	2/2/2020
7,419.0		NIOBRARA, Original Hole	4	13,179.0	13,180.0	2/2/2020
7,573.2		NIOBRARA, Original Hole	4	13,214.0	13,215.0	2/2/2020
7,715.9		NIOBRARA, Original Hole	4	13,242.0	13,243.0	2/2/2020
7,880.9		NIOBRARA, Original Hole	4	13,272.0	13,273.0	2/1/2020
8,022.0		NIOBRARA, Original Hole	4	13,305.0	13,306.0	2/1/2020
8,331.0		NIOBRARA, Original Hole	4	13,335.0	13,336.0	2/1/2020
8,495.1		NIOBRARA, Original Hole	4	13,367.0	13,368.0	2/1/2020
8,675.9		NIOBRARA, Original Hole	4	13,398.0	13,399.0	2/1/2020
8,978.0		NIOBRARA, Original Hole	4	13,428.0	13,429.0	2/1/2020
9,237.9		NIOBRARA, Original Hole	4	13,461.0	13,462.0	2/1/2020
9,524.9		NIOBRARA, Original Hole	4	13,493.0	13,494.0	2/1/2020
9,786.1		NIOBRARA, Original Hole	4	13,523.0	13,524.0	2/1/2020
10,094.2		NIOBRARA, Original Hole	4	13,555.0	13,556.0	2/1/2020
10,373.0		NIOBRARA, Original Hole	4	13,586.0	13,587.0	2/1/2020
10,650.9		NIOBRARA, Original Hole	4	13,618.0	13,619.0	2/1/2020
10,940.0		NIOBRARA, Original Hole	4	13,649.0	13,650.0	2/1/2020
11,208.0		NIOBRARA, Original Hole	4	13,681.0	13,682.0	2/1/2020
11,518.0		NIOBRARA, Original Hole	4	13,712.0	13,713.0	2/1/2020
11,798.9		NIOBRARA, Original Hole	4	13,738.0	13,739.0	2/1/2020
12,111.9		NIOBRARA, Original Hole	4	13,774.0	13,775.0	1/31/2020
12,395.0		NIOBRARA, Original Hole	4	13,806.0	13,807.0	1/31/2020
12,708.0		NIOBRARA, Original Hole	4	13,837.0	13,838.0	1/31/2020
12,992.1		NIOBRARA, Original Hole	4	13,869.0	13,870.0	1/31/2020
13,305.1		NIOBRARA, Original Hole	4	13,900.0	13,901.0	1/31/2020
13,586.9		NIOBRARA, Original Hole	4	13,932.0	13,933.0	1/31/2020
13,899.9		NIOBRARA, Original Hole	4	13,962.0	13,963.0	1/31/2020
14,190.9		NIOBRARA, Original Hole	4	13,990.0	13,991.0	1/31/2020
14,481.9		NIOBRARA, Original Hole	4	14,026.0	14,027.0	1/31/2020
14,740.0		NIOBRARA, Original Hole	4	14,057.0	14,058.0	1/31/2020
15,081.0	NIOBRARA, Original Hole	4	14,088.0	14,089.0	1/31/2020	
15,347.1	NIOBRARA, Original Hole	4	14,120.0	14,121.0	1/31/2020	
15,672.9	NIOBRARA, Original Hole	4	14,150.0	14,151.0	1/31/2020	
15,969.2	NIOBRARA, Original Hole	4	14,183.0	14,184.0	1/31/2020	
16,126.0	NIOBRARA, Original Hole	4	14,214.0	14,215.0	1/31/2020	
16,280.8	NIOBRARA, Original Hole	4	14,247.0	14,248.0	1/31/2020	
16,408.1	NIOBRARA, Original Hole	4	14,276.0	14,277.0	1/30/2020	
16,564.0						
16,708.0						
16,847.1						
16,991.1						
17,129.0						



Wellbore Schematic Input Report

Well Name: **WELLS RANCH STATE BB03-676**

Land, Original Hole, 2/22/2023 5:27:42 PM

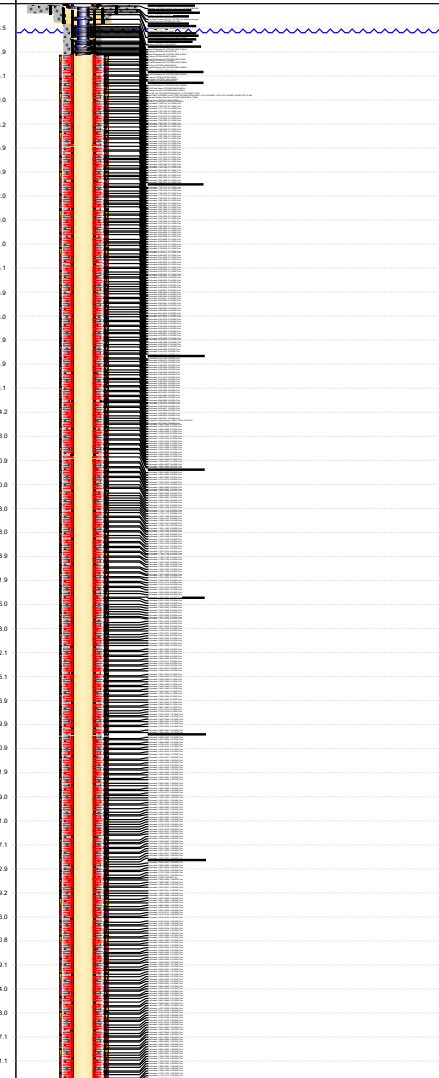
MD (ftKB)		Perforation Data				
Vertical schematic (actual)		Linked Zone	Sum of Entered Shot Total			
				Top (ftKB)	Btm (ftKB)	Date
3,678.5		NIOBRARA, Original Hole	4	14,308.0	14,309.0	1/30/2020
6,961.9		NIOBRARA, Original Hole	4	14,339.0	14,340.0	1/30/2020
7,263.1		NIOBRARA, Original Hole	4	14,371.0	14,372.0	1/30/2020
7,419.0		NIOBRARA, Original Hole	4	14,402.0	14,403.0	1/30/2020
7,573.2		NIOBRARA, Original Hole	4	14,434.0	14,435.0	1/30/2020
7,715.9		NIOBRARA, Original Hole	4	14,462.0	14,463.0	1/30/2020
7,880.9		NIOBRARA, Original Hole	4	14,497.0	14,498.0	1/30/2020
8,022.0		NIOBRARA, Original Hole	4	14,530.0	14,531.0	1/30/2020
8,190.0		NIOBRARA, Original Hole	4	14,559.0	14,560.0	1/30/2020
8,331.0		NIOBRARA, Original Hole	4	14,590.0	14,591.0	1/30/2020
8,495.1		NIOBRARA, Original Hole	4	14,622.0	14,623.0	1/30/2020
8,675.9		NIOBRARA, Original Hole	4	14,653.0	14,654.0	1/30/2020
8,878.0		NIOBRARA, Original Hole	4	14,684.0	14,685.0	1/30/2020
9,237.9		NIOBRARA, Original Hole	4	14,716.0	14,717.0	1/30/2020
9,524.9		NIOBRARA, Original Hole	4	14,748.0	14,749.0	1/30/2020
9,786.1		NIOBRARA, Original Hole	4	14,782.0	14,783.0	1/29/2020
10,094.2		NIOBRARA, Original Hole	4	14,810.0	14,811.0	1/29/2020
10,373.0		NIOBRARA, Original Hole	4	14,841.0	14,842.0	1/29/2020
10,650.9		NIOBRARA, Original Hole	4	14,873.0	14,874.0	1/29/2020
10,940.0		NIOBRARA, Original Hole	4	14,904.0	14,905.0	1/29/2020
11,208.0		NIOBRARA, Original Hole	4	14,936.0	14,937.0	1/29/2020
11,518.0		NIOBRARA, Original Hole	4	14,967.0	14,968.0	1/29/2020
11,798.9		NIOBRARA, Original Hole	4	14,996.0	14,997.0	1/29/2020
12,111.9		NIOBRARA, Original Hole	4	15,029.0	15,030.0	1/29/2020
12,395.0		NIOBRARA, Original Hole	4	15,061.0	15,062.0	1/29/2020
12,708.0		NIOBRARA, Original Hole	4	15,093.0	15,094.0	1/29/2020
12,992.1		NIOBRARA, Original Hole	4	15,124.0	15,125.0	1/29/2020
13,305.1		NIOBRARA, Original Hole	4	15,155.0	15,156.0	1/29/2020
13,586.9		NIOBRARA, Original Hole	4	15,187.0	15,188.0	1/29/2020
13,899.9		NIOBRARA, Original Hole	4	15,216.0	15,217.0	1/29/2020
14,190.9		NIOBRARA, Original Hole	4	15,245.0	15,246.0	1/29/2020
14,461.9		NIOBRARA, Original Hole	4	15,280.0	15,281.0	1/29/2020
14,740.0		NIOBRARA, Original Hole	4	15,314.0	15,315.0	1/29/2020
15,061.0		NIOBRARA, Original Hole	4	15,346.0	15,347.0	1/29/2020
15,347.1		NIOBRARA, Original Hole	4	15,379.0	15,380.0	1/29/2020
15,672.9		NIOBRARA, Original Hole	4	15,411.0	15,412.0	1/29/2020
15,969.2		NIOBRARA, Original Hole	4	15,441.0	15,442.0	1/29/2020
16,126.0		NIOBRARA, Original Hole	4	15,477.0	15,478.0	1/29/2020
16,280.8		NIOBRARA, Original Hole	4	15,510.0	15,511.0	1/29/2020
16,408.1		NIOBRARA, Original Hole				
16,564.0						
16,708.0						
16,847.1						
16,991.1						
17,129.0						



Wellbore Schematic Input Report

Well Name: WELLS RANCH STATE BB03-676

Land, Original Hole, 2/22/2023 5:27:43 PM

Vertical schematic (actual)		Perforation Data				
MD (ftKB)		Linked Zone	Sum of Entered Shot Total	Top (ftKB)	Btm (ftKB)	Date
3,678.5		NIOBRARA, Original Hole	4	15,540.0	15,541.0	1/28/2020
6,961.9		NIOBRARA, Original Hole	4	15,572.0	15,573.0	1/28/2020
7,263.1		NIOBRARA, Original Hole	4	15,606.0	15,607.0	1/28/2020
7,419.0		NIOBRARA, Original Hole	4	15,606.0	15,607.0	1/28/2020
7,573.2		NIOBRARA, Original Hole	4	15,639.0	15,640.0	1/28/2020
7,715.9		NIOBRARA, Original Hole	4	15,673.0	15,674.0	1/28/2020
7,880.9		NIOBRARA, Original Hole	4	15,704.0	15,705.0	1/28/2020
8,022.0		NIOBRARA, Original Hole	4	15,737.0	15,738.0	1/28/2020
8,190.0		NIOBRARA, Original Hole	4	15,770.0	15,771.0	1/28/2020
8,331.0		NIOBRARA, Original Hole	4	15,798.0	15,798.0	1/28/2020
8,495.1		NIOBRARA, Original Hole	4	15,828.0	15,829.0	1/28/2020
8,675.9		NIOBRARA, Original Hole	4	15,856.0	15,857.0	1/28/2020
8,978.0		NIOBRARA, Original Hole	4	15,884.0	15,885.0	1/28/2020
9,237.9		NIOBRARA, Original Hole	4	15,912.0	15,913.0	1/28/2020
9,524.9		NIOBRARA, Original Hole	4	15,912.0	15,913.0	1/28/2020
9,786.1		NIOBRARA, Original Hole	4	15,940.0	15,941.0	1/28/2020
10,094.2		NIOBRARA, Original Hole	4	15,940.0	15,941.0	1/28/2020
10,373.0		NIOBRARA, Original Hole	4	15,969.0	15,970.0	1/28/2020
10,650.9		NIOBRARA, Original Hole	4	15,997.0	15,998.0	1/28/2020
10,940.0		NIOBRARA, Original Hole	3	16,027.0	16,028.0	1/28/2020
11,208.0		NIOBRARA, Original Hole	3	16,041.0	16,042.0	1/28/2020
11,518.0		NIOBRARA, Original Hole	3	16,055.0	16,056.0	1/28/2020
11,798.9		NIOBRARA, Original Hole	3	16,065.0	16,066.0	1/28/2020
12,111.9		NIOBRARA, Original Hole	3	16,083.0	16,084.0	1/28/2020
12,395.0		NIOBRARA, Original Hole	3	16,097.0	16,098.0	1/28/2020
12,708.0		NIOBRARA, Original Hole	3	16,110.0	16,111.0	1/28/2020
12,992.1		NIOBRARA, Original Hole	3	16,125.0	16,126.0	1/28/2020
13,305.1		NIOBRARA, Original Hole	3	16,139.0	16,140.0	1/28/2020
13,586.9		NIOBRARA, Original Hole	3	16,139.0	16,140.0	1/28/2020
13,899.9		NIOBRARA, Original Hole	3	16,153.0	16,154.0	1/28/2020
14,190.9		NIOBRARA, Original Hole	3	16,167.0	16,168.0	1/28/2020
14,481.9		NIOBRARA, Original Hole	3	16,181.0	16,182.0	1/28/2020
14,740.0		NIOBRARA, Original Hole	3	16,195.0	16,196.0	1/28/2020
15,051.0		NIOBRARA, Original Hole	3	16,209.0	16,210.0	1/28/2020
15,347.1		NIOBRARA, Original Hole	3	16,223.0	16,224.0	1/28/2020
15,672.9		NIOBRARA, Original Hole	3	16,253.0	16,254.0	1/27/2020
15,969.2		NIOBRARA, Original Hole	3	16,253.0	16,254.0	1/27/2020
16,126.0		NIOBRARA, Original Hole	3	16,267.0	16,268.0	1/27/2020
16,280.8		NIOBRARA, Original Hole	3	16,281.0	16,282.0	1/27/2020
16,408.1		NIOBRARA, Original Hole	3	16,296.0	16,297.0	1/27/2020
16,564.0		NIOBRARA, Original Hole	3	16,310.0	16,311.0	1/27/2020
16,708.0		NIOBRARA, Original Hole	3	16,324.0	16,325.0	1/27/2020
16,847.1		NIOBRARA, Original Hole	3	16,334.0	16,335.0	1/27/2020
16,991.1		NIOBRARA, Original Hole	3	16,334.0	16,335.0	1/27/2020
17,129.0		NIOBRARA, Original Hole	3	16,352.0	16,353.0	1/27/2020



Wellbore Schematic Input Report

Well Name: WELLS RANCH STATE BB03-676

Land, Original Hole, 2/22/2023 5:27:43 PM

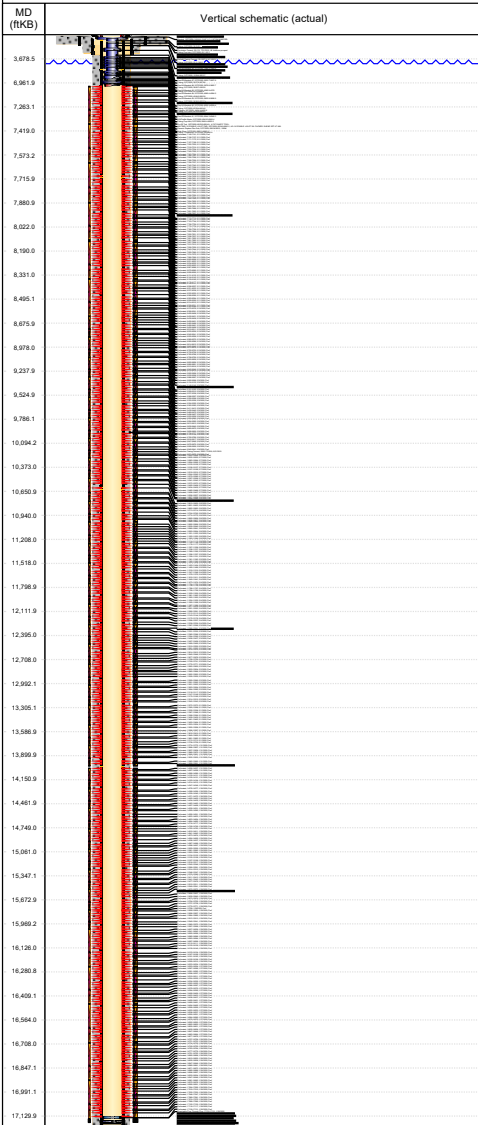
MD (ftKB)		Perforation Data				
Vertical schematic (actual)		Linked Zone	Sum of Entered Shot Total	Top (ftKB)	Btm (ftKB)	Date
3,678.5		NIOBRARA, Original Hole	3	16,366.0	16,367.0	1/27/2020
6,961.9		NIOBRARA, Original Hole	3	16,378.0	16,379.0	1/27/2020
7,263.1		NIOBRARA, Original Hole	3	16,394.0	16,395.0	1/27/2020
7,419.0		NIOBRARA, Original Hole	3	16,408.0	16,409.0	1/27/2020
7,573.2		NIOBRARA, Original Hole	3	16,422.0	16,423.0	1/27/2020
7,715.9		NIOBRARA, Original Hole	3	16,436.0	16,437.0	1/27/2020
7,860.9		NIOBRARA, Original Hole	3	16,450.0	16,451.0	1/27/2020
8,022.0		NIOBRARA, Original Hole	3	16,480.0	16,481.0	1/27/2020
8,190.0		NIOBRARA, Original Hole	3	16,494.0	16,495.0	1/27/2020
8,331.0		NIOBRARA, Original Hole	3	16,508.0	16,509.0	1/27/2020
8,495.1		NIOBRARA, Original Hole	3	16,522.0	16,523.0	1/27/2020
8,675.9		NIOBRARA, Original Hole	3	16,536.0	16,537.0	1/27/2020
8,878.0		NIOBRARA, Original Hole	3	16,550.0	16,551.0	1/27/2020
9,237.9		NIOBRARA, Original Hole	3	16,564.0	16,565.0	1/27/2020
9,524.9		NIOBRARA, Original Hole	3	16,578.0	16,579.0	1/27/2020
9,786.1		NIOBRARA, Original Hole	3	16,592.0	16,593.0	1/27/2020
10,094.2		NIOBRARA, Original Hole	3	16,602.0	16,603.0	1/27/2020
10,373.0		NIOBRARA, Original Hole	3	16,620.0	16,621.0	1/27/2020
10,650.9		NIOBRARA, Original Hole	3	16,635.0	16,636.0	1/27/2020
10,940.0		NIOBRARA, Original Hole	3	16,647.0	16,648.0	1/27/2020
11,208.0		NIOBRARA, Original Hole	3	16,663.0	16,664.0	1/27/2020
11,518.0		NIOBRARA, Original Hole	3	16,677.0	16,678.0	1/27/2020
11,798.9		NIOBRARA, Original Hole	3	16,707.0	16,708.0	1/26/2020
12,111.9		NIOBRARA, Original Hole	3	16,721.0	16,722.0	1/26/2020
12,395.0		NIOBRARA, Original Hole	3	16,734.0	16,735.0	1/26/2020
12,708.0		NIOBRARA, Original Hole	3	16,749.0	16,750.0	1/26/2020
12,992.1		NIOBRARA, Original Hole	3	16,763.0	16,764.0	1/26/2020
13,305.1		NIOBRARA, Original Hole	3	16,777.0	16,778.0	1/26/2020
13,586.9		NIOBRARA, Original Hole	3	16,791.0	16,792.0	1/26/2020
13,899.9		NIOBRARA, Original Hole	3	16,805.0	16,806.0	1/26/2020
14,190.9		NIOBRARA, Original Hole	3	16,819.0	16,820.0	1/26/2020
14,461.9		NIOBRARA, Original Hole	3	16,835.0	16,836.0	1/26/2020
14,740.0		NIOBRARA, Original Hole	3	16,847.0	16,848.0	1/26/2020
15,061.0		NIOBRARA, Original Hole	3	16,860.0	16,861.0	1/26/2020
15,347.1		NIOBRARA, Original Hole	3	16,871.0	16,872.0	1/26/2020
15,672.9		NIOBRARA, Original Hole	3	16,885.0	16,886.0	1/26/2020
15,969.2		NIOBRARA, Original Hole	3	16,896.0	16,897.0	1/26/2020
16,126.0		NIOBRARA, Original Hole	3	16,933.0	16,934.0	1/26/2020
16,280.8		NIOBRARA, Original Hole	3	16,947.0	16,948.0	1/26/2020
16,408.1		NIOBRARA, Original Hole				
16,564.0						
16,708.0						
16,847.1						
16,991.1						
17,129.0						



Wellbore Schematic Input Report

Well Name: **WELLS RANCH STATE BB03-676**

Land, Original Hole, 2/22/2023 5:27:43 PM



Perforation Data

Linked Zone	Sum of Entered Shot Total	Top (ftKB)	Btm (ftKB)	Date
NIOBRARA, Original Hole	3	16,961.0	16,962.0	1/26/2020
NIOBRARA, Original Hole	3	16,975.0	16,976.0	1/26/2020
NIOBRARA, Original Hole	3	16,990.0	16,991.0	1/26/2020
NIOBRARA, Original Hole	3	17,004.0	17,005.0	1/26/2020
NIOBRARA, Original Hole	3	17,018.0	17,019.0	1/26/2020
NIOBRARA, Original Hole	3	17,032.0	17,033.0	1/26/2020
NIOBRARA, Original Hole	3	17,046.0	17,047.0	1/26/2020
NIOBRARA, Original Hole	3	17,060.0	17,061.0	1/26/2020
NIOBRARA, Original Hole	3	17,074.0	17,075.0	1/26/2020
NIOBRARA, Original Hole	3	17,088.0	17,089.0	1/26/2020
NIOBRARA, Original Hole	3	17,102.0	17,103.0	1/26/2020
NIOBRARA, Original Hole	3	17,116.0	17,117.0	1/26/2020
NIOBRARA, Original Hole	3	17,130.0	17,131.0	1/26/2020
Total (Sum)	1,545			

Job Supply Amounts

Supply Item Des	Supply Type	Unit	Job Category	Total	Total	Total
-----------------	-------------	------	--------------	-------	-------	-------

Daily Cost Breakdown by Category

Field Est (Cd)	Description	Note
----------------	-------------	------