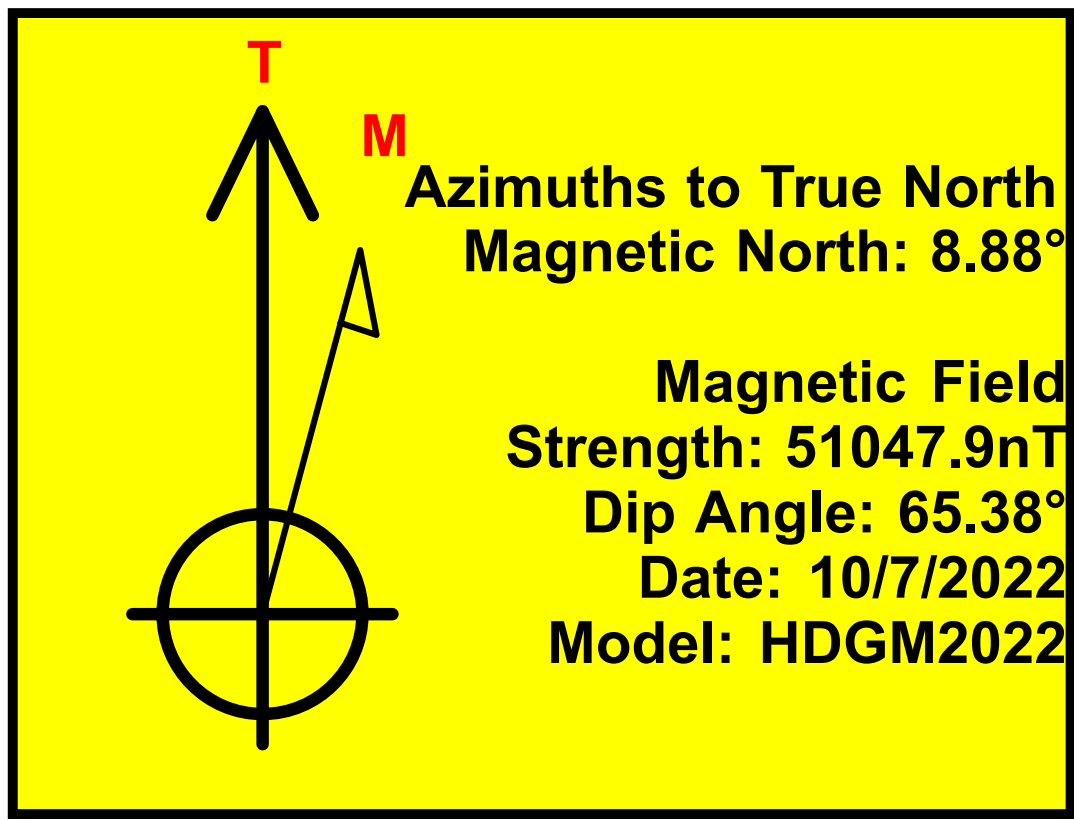


WMC 24-17 Pad  
WMC 512-20  
Q221023 & RM-220914  
Plan 2

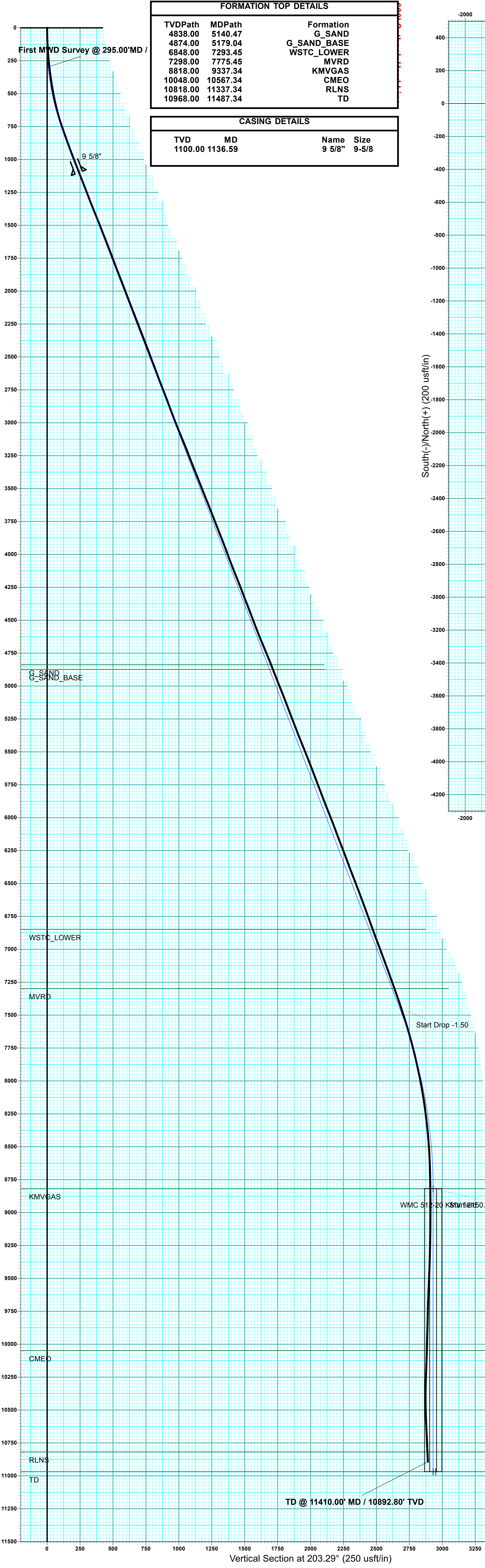
Company Name: Terra Energy Partners, LLP  
WMC 512-20  
Garfield County, CO (Nad 83)  
Rig: KB=30' @ 8898.00usft  
Created by: Chase Chambers  
Date: 5:14, October 13 2022

PROJECT DETAILS: Garfield County, CO (Nad 83)  
Geodetic System: US State Plane 1983  
Datum: North American Datum 1983  
Ellipsoid: GRS 1980  
Zone: Colorado Central Zone  
System Datum: Mean Sea Level

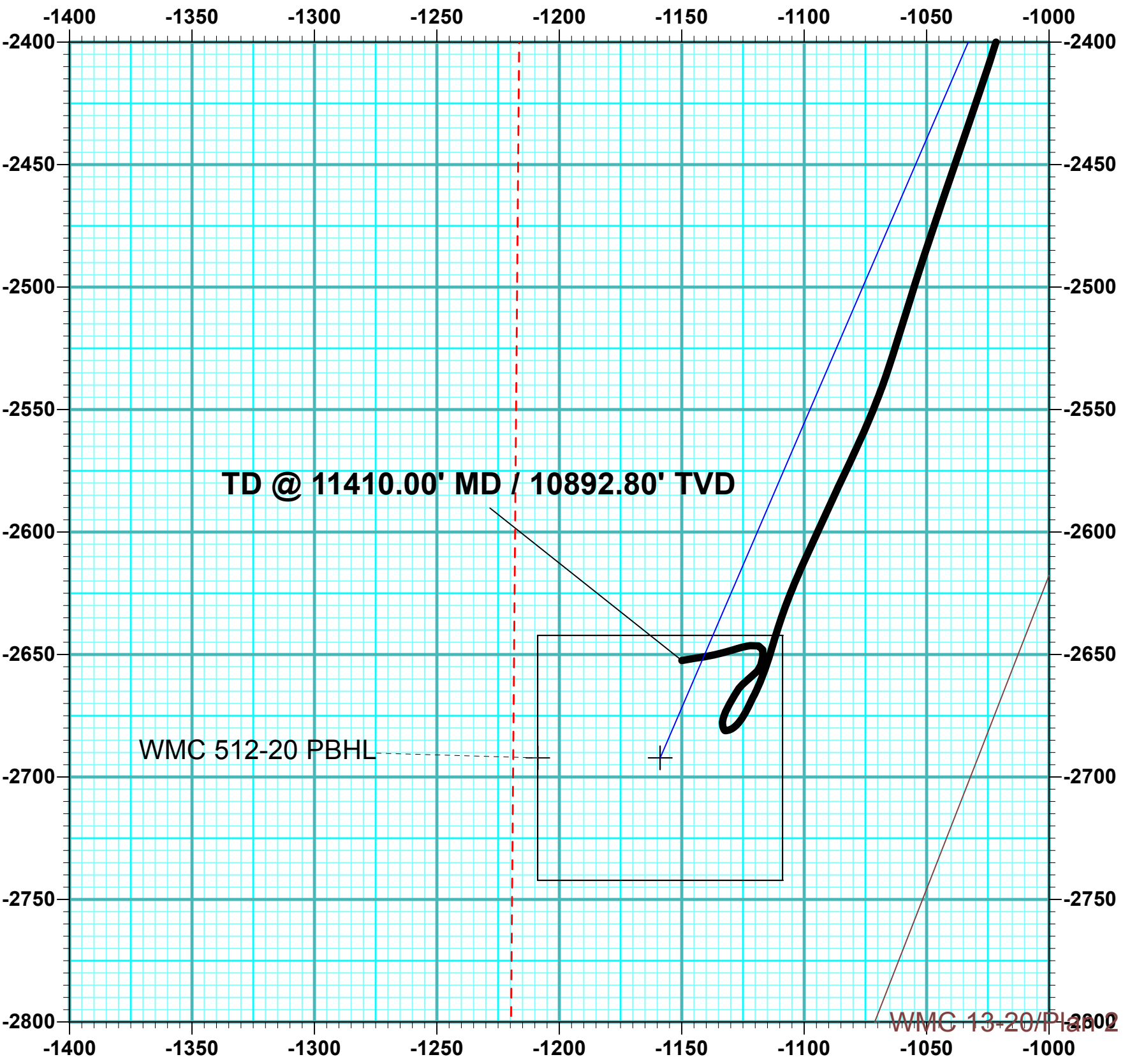
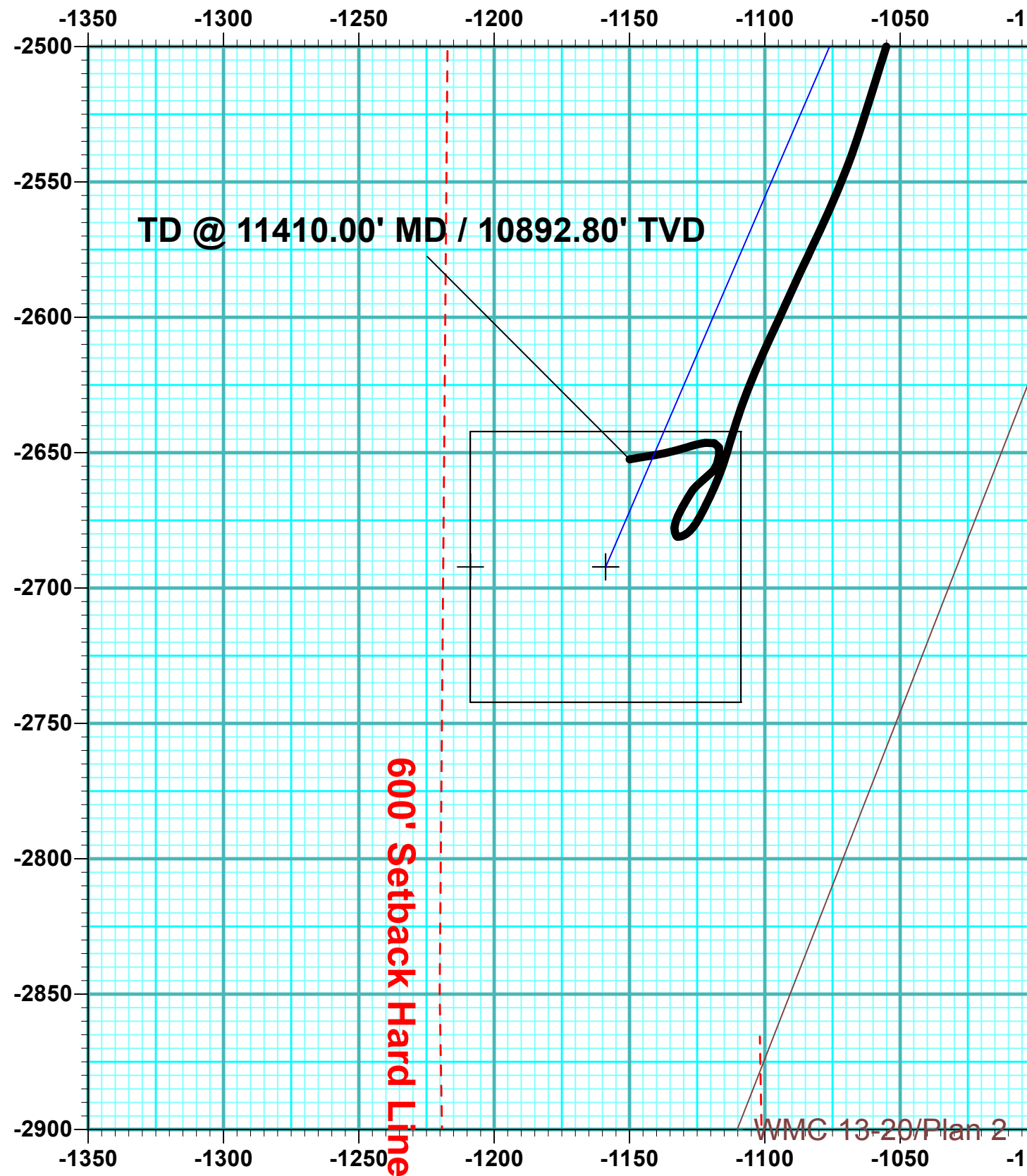
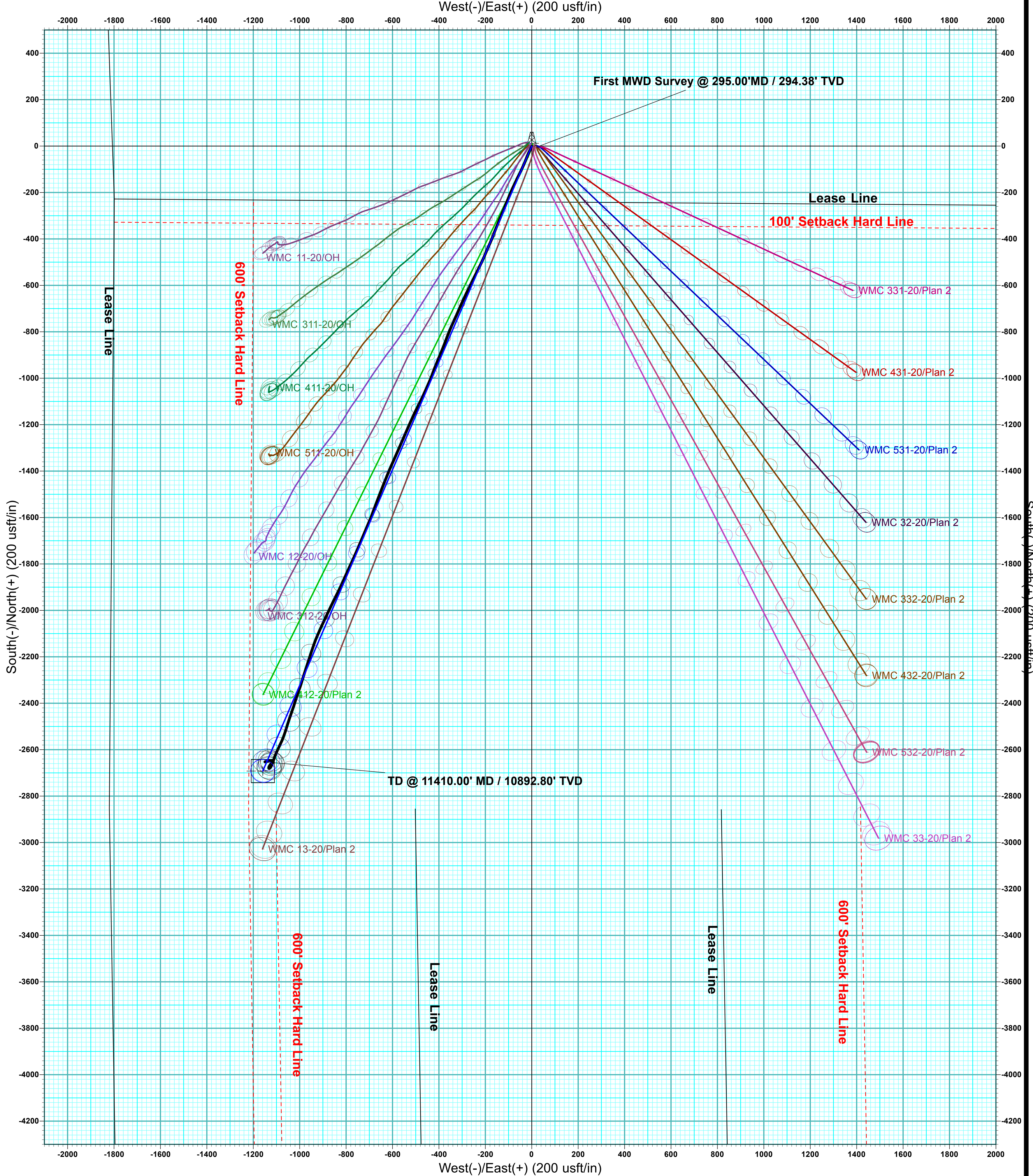


WELL DETAILS: WMC 512-20							
Ground Elevation:				8868.00			
+N/-S	+E/-W	Northing	Easting	Latitude	Longitude		
0.00	0.00	1593024.20	2350614.10	39.439054	-107.799536	WMC 512-20	
DESIGN TARGET DETAILS							
Name	TVD	+N/-S	+E/-W	Northing	Easting	Latitude	Longitude
WMC 512-20 KMW field	8818.00	-2692.16	-1158.75	1590362.23	2349387.58	39.431663	-107.803639
WMC 512-20 PBHL	10968.00	-2692.16	-1208.75	1590363.50	2349337.60	39.431663	-107.803816
WMC 512-20 PBHL field	10968.00	-2692.16	-1158.75	1590362.23	2349387.58	39.431663	-107.803639
DESIGN ANNOTATIONS							
MD	Inc	Azi	TVD	+N/-S	+E/-W	VSec	Departure
120.00	0.00	0.00	120.00	0.00	0.00	0.00	0.00
819.93	21.00	203.29	804.37	-116.49	-50.14	126.83	126.83
7937.48	21.00	203.29	7449.27	-2459.17	-1058.47	2677.29	2677.29
9337.34	0.00	0.00	8818.00	-2692.16	-1158.75	2930.94	2930.94
11487.34	0.00	0.00	10968.00	-2692.16	-1158.75	2930.94	2930.94
				Annotation			
				Start Build 3.00			
				Start 7117.55 hold at 819.93 MD			
				Start Drop -1.50			
				Start 2150.00 hold at 9337.34 MD			
				TD at 11487.34			

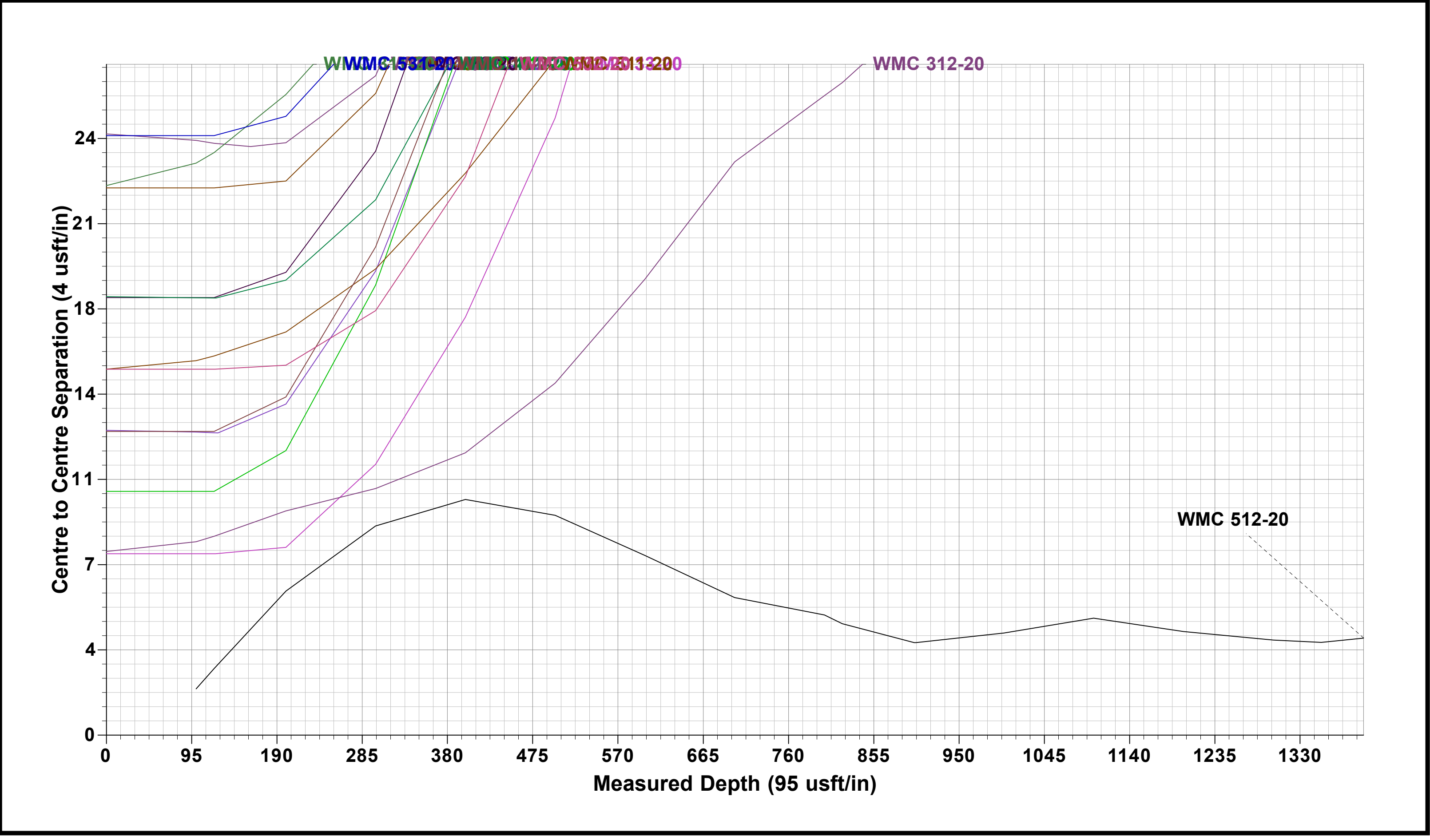
SLOTS				
Slot Name	+N/-S	+E/-W	Northing	Easting
WMC 11-20	17.36	-17.55	1593042.00	2350597.00
WMC 12-20	12.02	-3.51	1593036.30	2350610.90
WMC 13-20	6.67	10.53	1593030.60	2350624.80
WMC 311-20	7.97	-21.11	1593032.70	2350593.20
WMC 312-20	2.62	-7.07	1593027.00	2350607.10
WMC 32-20	4.04	17.50	1593027.80	2350631.70
WMC 331-20	-3.92	38.61	1593019.30	2350652.60
WMC 33-20	-2.62	6.97	1593021.40	2350621.00
WMC 332-20	-10.60	27.98	1593012.90	2350641.80
WMC 411-20	14.64	-10.47	1593039.10	2350604.00
WMC 412-20	9.39	3.46	1593033.50	2350617.80
WMC 431-20	-1.30	31.54	1593022.10	2350645.60
WMC 432-20	-7.97	21.01	1593015.70	2350634.90
WMC 511-20	5.35	-14.04	1593029.90	2350600.20
WMC 512-20	0.00	0.00	1593024.20	2350614.10
WMC 531-20	1.42	24.57	1593025.00	2350638.70
WMC 532-20	-5.35	14.04	1593018.50	2350628.00



FORMATION TOP DETAILS				
TVDPATH	MDPATH	Formation		
4838.00	5140.47	G_SAND		
4874.00	5179.04	G_SAND_BASE		
6848.00	7293.45	WSTC_LOWER		
7298.00	7775.45	MVRD		
8818.00	9337.34	KMWGAS		
10048.00	10567.34	CMEO		
10818.00	11337.34	RLNS		
10968.00	11487.34	TD		
CASING DETAILS				
TVD	MD	Name	Size	
1100.00	1136.59	9 5/8"	9-5/8"	



ANNOTATIONS							
MD	Inc	Azi	TVD	+N/-S	+E/-W	VSec	Departure
295.00	6.42	203.56	294.38	-15.13	-6.60	16.51	16.51
11410.00	4.61	260.25	10892.80	-2652.43	-1149.92	2890.97	2989.03
				Annotation			
				First MWD Survey @ 295.00' MD / 294.38' TVD			
				TD @ 11410.00' MD / 10892.80' TVD			







## **Terra Energy Partners, LLP**

**Garfield County, CO (Nad 83)**

**WMC 24-17 Pad**

**WMC 512-20 - Slot WMC 512-20**

**OH**

**Design: OH**

## **KLX Survey Certification Report**

**13 October, 2022**



**KLX Directional Drilling, INC.**

11390 FM 830  
Willis, TX 77318  
Phone: (936) 856-4332  
Fax: (936) 856-8678

---

**Survey Certification Sheet**

Company	Job Number	Date
TEP Rocky Mountain LLC	RM-220914	10/13/2022

Lease	Well Name	County & State
SESW 17 7S93W 6	Federal #WMC 512-20	Garfield County, CO

API No.	Survey Depth Range	Survey Type
05-045-24487	295 feet to 11410 feet MD	MWD

Sidetrack Information	Directional Supervisor/Surveyor
<a href="#">Click here to enter text.</a>	Robert Cuevas

**Certification Statement**

The data and calculations for this survey have been checked by me and conform to the standards and procedures set forth by KLX Directional Drilling. This report represents a true and correct directional survey of this well based on the original data obtained at the well site. Wellbore coordinates are calculated using minimum curvature.

Kristopher Ray  
Regulatory Compliance Manager  
KLX Directional Drilling, Inc.

<b>Company:</b>	Terra Energy Partners, LLP	<b>Local Co-ordinate Reference:</b>	Well WMC 512-20 - Slot WMC 512-20
<b>Project:</b>	Garfield County, CO (Nad 83)	<b>TVD Reference:</b>	KB=30' @ 8898.00usft
<b>Site:</b>	WMC 24-17 Pad	<b>MD Reference:</b>	KB=30' @ 8898.00usft
<b>Well:</b>	WMC 512-20	<b>North Reference:</b>	True
<b>Wellbore:</b>	OH	<b>Survey Calculation Method:</b>	Minimum Curvature
<b>Design:</b>	OH	<b>Database:</b>	EDM 5000.1 Single User Db

<b>Project</b>	Garfield County, CO (Nad 83)		
<b>Map System:</b>	US State Plane 1983	<b>System Datum:</b>	Mean Sea Level
<b>Geo Datum:</b>	North American Datum 1983		
<b>Map Zone:</b>	Colorado Central Zone		

Site		WMC 24-17 Pad			
Site Position:		Northing:	1,593,032.70 usft	Latitude:	39.439076
From:	Map	Easting:	2,350,593.20 usft	Longitude:	-107.799611
Position Uncertainty:	0.00 usft	Slot Radius:	13-3/16 "	Grid Convergence:	-1.45 °

Well		WMC 512-20 - Slot WMC 512-20				
Well Position	+N/-S	0.00 usft	Northing:	1,593,024.20 usft	Latitude:	39.439054
	+E/-W	0.00 usft	Easting:	2,350,614.10 usft	Longitude:	-107.799536
Position Uncertainty		0.00 usft	Wellhead Elevation:	usft	Ground Level:	8,868.00 usft

<b>Wellbore</b>	OH				
<b>Magnetics</b>	<b>Model Name</b>	<b>Sample Date</b>	<b>Declination (°)</b>	<b>Dip Angle (°)</b>	<b>Field Strength (nT)</b>
	HDGM2022	10/7/2022	8.88	65.38	51,047.90000000

<b>Design</b>	OH				
<b>Audit Notes:</b>					
<b>Version:</b>	1.0	<b>Phase:</b>	ACTUAL	<b>Tie On Depth:</b>	0.00
<b>Vertical Section:</b>	<b>Depth From (TVD) (usft)</b>	<b>+N/-S (usft)</b>	<b>+E/-W (usft)</b>	<b>Direction (°)</b>	
	0.00	0.00	0.00	203.44	

<b>Survey Program</b>	<b>Date</b>	10/13/2022			
<b>From (usft)</b>	<b>To (usft)</b>	<b>Survey (Wellbore)</b>	<b>Tool Name</b>	<b>Description</b>	
295.00	11,410.00	KLX MWD Surveys (OH)	OWSG (REV5) MWD HDGM	OWSG MWD - Standard	

<b>Survey</b>								
<b>MD (usft)</b>	<b>Inc (°)</b>	<b>Azi (azimuth) (°)</b>	<b>TVD (usft)</b>	<b>N/S (usft)</b>	<b>E/W (usft)</b>	<b>Closure Distance (usft)</b>	<b>Closure Azimuth (°)</b>	
0.00	0.00	0.00	0.00	0.00	0.00	0.00	0.00	0.00
295.00	6.42	203.56	294.38	-15.13	-6.60	16.51	203.56	
<b>First MWD Survey @ 295.00'MD / 294.38' TVD</b>								
388.00	8.31	207.07	386.61	-25.89	-11.74	28.42	204.39	
481.00	10.15	202.42	478.41	-39.45	-17.92	43.33	204.43	
574.00	12.66	201.18	569.56	-56.53	-24.73	61.70	203.63	
667.00	15.42	203.38	659.78	-77.38	-33.32	84.25	203.30	
760.00	19.20	204.88	748.55	-102.61	-44.66	111.91	203.52	
853.00	19.69	207.07	836.24	-130.44	-58.23	142.84	204.06	
947.00	20.35	204.88	924.56	-159.37	-72.31	175.01	204.41	
1,040.00	21.49	204.61	1,011.43	-189.53	-86.21	208.21	204.46	
1,108.00	21.23	201.80	1,074.76	-212.28	-95.97	232.97	204.33	

<b>Company:</b>	Terra Energy Partners, LLP	<b>Local Co-ordinate Reference:</b>	Well WMC 512-20 - Slot WMC 512-20
<b>Project:</b>	Garfield County, CO (Nad 83)	<b>TVD Reference:</b>	KB=30' @ 8898.00usft
<b>Site:</b>	WMC 24-17 Pad	<b>MD Reference:</b>	KB=30' @ 8898.00usft
<b>Well:</b>	WMC 512-20	<b>North Reference:</b>	True
<b>Wellbore:</b>	OH	<b>Survey Calculation Method:</b>	Minimum Curvature
<b>Design:</b>	OH	<b>Database:</b>	EDM 5000.1 Single User Db

Survey								
MD (usft)	Inc (°)	Azi (azimuth) (°)		TVD (usft)	N/S (usft)	E/W (usft)	Closure Distance (usft)	Closure Azimuth (°)
1,249.00	21.14	202.24		1,206.23	-259.52	-115.07	283.89	203.91
1,339.00	21.09	202.59		1,290.19	-289.49	-127.43	316.30	203.76
1,430.00	22.02	202.85		1,374.83	-320.33	-140.35	349.73	203.66
1,520.00	21.97	201.62		1,458.28	-351.53	-153.10	383.42	203.53
1,611.00	21.14	200.66		1,542.91	-382.71	-165.17	416.83	203.34
1,701.00	21.80	204.09		1,626.67	-413.15	-177.71	449.75	203.27
1,791.00	20.74	202.94		1,710.54	-443.08	-190.75	482.40	203.29
1,882.00	20.52	203.03		1,795.70	-472.60	-203.27	514.46	203.27
1,972.00	21.58	206.19		1,879.70	-501.97	-216.74	546.76	203.35
2,063.00	21.18	206.19		1,964.44	-531.74	-231.38	579.90	203.52
2,153.00	20.43	206.37		2,048.57	-560.40	-245.54	611.83	203.66
2,244.00	21.80	206.37		2,133.46	-589.77	-260.10	644.58	203.80
2,334.00	20.83	206.02		2,217.30	-619.13	-274.54	677.26	203.91
2,425.00	21.58	204.96		2,302.14	-648.84	-288.70	710.17	203.99
2,515.00	21.05	204.61		2,385.98	-678.54	-302.41	742.88	204.02
2,606.00	20.13	203.21		2,471.17	-707.79	-315.39	774.88	204.02
2,696.00	21.23	204.61		2,555.37	-736.84	-328.28	806.66	204.01
2,787.00	20.00	204.44		2,640.54	-765.99	-341.58	838.70	204.03
2,877.00	21.58	201.80		2,724.68	-795.37	-354.10	870.63	204.00
2,967.00	20.87	201.18		2,808.57	-825.68	-366.04	903.18	203.91
3,058.00	20.13	200.75		2,893.81	-855.44	-377.44	935.01	203.81
3,148.00	21.05	202.77		2,978.06	-884.83	-389.18	966.64	203.74
3,238.00	22.63	202.42		3,061.60	-915.74	-402.04	1,000.11	203.70
3,329.00	22.68	201.89		3,145.58	-948.20	-415.26	1,035.15	203.65
3,419.00	21.01	199.95		3,229.11	-979.47	-427.24	1,068.60	203.57
3,510.00	21.18	202.94		3,314.02	-1,009.95	-439.21	1,101.32	203.50
3,601.00	22.24	204.09		3,398.56	-1,040.81	-452.65	1,134.98	203.50
3,691.00	21.14	204.61		3,482.19	-1,071.11	-466.36	1,168.23	203.53
3,781.00	22.24	206.63		3,565.81	-1,101.09	-480.75	1,201.47	203.59
3,872.00	21.71	206.29		3,650.20	-1,131.58	-495.93	1,235.48	203.67
3,962.00	20.70	204.96		3,734.11	-1,160.92	-510.01	1,268.01	203.72
4,053.00	21.97	203.82		3,818.87	-1,191.08	-523.67	1,301.12	203.73
4,144.00	21.18	203.56		3,903.49	-1,221.72	-537.12	1,334.58	203.73
4,234.00	20.04	203.82		3,987.73	-1,250.73	-549.85	1,366.26	203.73
4,325.00	20.96	203.38		4,072.97	-1,279.94	-562.60	1,398.13	203.73
4,415.00	22.10	203.47		4,156.69	-1,310.24	-575.73	1,431.15	203.72
4,506.00	21.45	204.26		4,241.19	-1,341.11	-589.39	1,464.91	203.72
4,596.00	20.52	203.91		4,325.22	-1,370.54	-602.54	1,497.14	203.73
4,687.00	21.66	202.85		4,410.13	-1,400.59	-615.53	1,529.88	203.72
4,777.00	20.43	201.62		4,494.12	-1,430.50	-627.77	1,562.19	203.69
4,868.00	21.18	201.98		4,579.19	-1,460.51	-639.77	1,594.49	203.66
4,959.00	22.76	201.18		4,663.58	-1,492.17	-652.28	1,628.51	203.61
5,049.00	22.63	200.75		4,746.61	-1,524.60	-664.71	1,663.20	203.56
5,140.00	21.88	200.75		4,830.83	-1,556.83	-676.92	1,697.63	203.50

<b>Company:</b>	Terra Energy Partners, LLP	<b>Local Co-ordinate Reference:</b>	Well WMC 512-20 - Slot WMC 512-20
<b>Project:</b>	Garfield County, CO (Nad 83)	<b>TVD Reference:</b>	KB=30' @ 8898.00usft
<b>Site:</b>	WMC 24-17 Pad	<b>KB Reference:</b>	KB=30' @ 8898.00usft
<b>Well:</b>	WMC 512-20	<b>North Reference:</b>	True
<b>Wellbore:</b>	OH	<b>Survey Calculation Method:</b>	Minimum Curvature
<b>Design:</b>	OH	<b>Database:</b>	EDM 5000.1 Single User Db

Survey								
MD (usft)	Inc (°)	Azi (azimuth) (°)	TVD (usft)	N/S (usft)	E/W (usft)	Closure Distance (usft)	Closure Azimuth (°)	
5,230.00	20.74	199.95	4,914.68	-1,587.49	-688.30	1,730.28	203.44	
5,321.00	22.15	203.21	4,999.38	-1,618.41	-700.56	1,763.52	203.41	
5,412.00	21.53	203.47	5,083.84	-1,649.49	-713.97	1,797.38	203.41	
5,502.00	20.30	202.42	5,167.91	-1,679.07	-726.50	1,829.50	203.40	
5,592.00	21.40	202.85	5,252.02	-1,708.63	-738.83	1,861.53	203.38	
5,683.00	20.83	203.56	5,336.91	-1,738.76	-751.75	1,894.31	203.38	
5,773.00	22.19	204.44	5,420.64	-1,768.91	-765.18	1,927.31	203.39	
5,864.00	21.80	204.61	5,505.01	-1,799.91	-779.32	1,961.39	203.41	
5,954.00	21.31	204.35	5,588.72	-1,830.01	-793.02	1,994.45	203.43	
6,044.00	20.48	204.26	5,672.80	-1,859.26	-806.24	2,026.54	203.44	
6,135.00	21.18	204.79	5,757.85	-1,888.70	-819.67	2,058.89	203.46	
6,225.00	20.57	206.28	5,841.95	-1,917.64	-833.49	2,090.94	203.49	
6,316.00	21.93	206.37	5,926.76	-1,947.20	-848.11	2,123.88	203.54	
6,406.00	21.40	205.67	6,010.40	-1,977.05	-862.69	2,157.08	203.57	
6,497.00	20.30	205.76	6,095.44	-2,006.23	-876.74	2,189.44	203.61	
6,588.00	21.27	204.88	6,180.51	-2,035.43	-890.55	2,221.72	203.63	
6,678.00	20.87	204.44	6,264.50	-2,064.83	-904.05	2,254.07	203.65	
6,768.00	20.13	204.44	6,348.80	-2,093.52	-917.09	2,285.58	203.66	
6,859.00	21.40	201.80	6,433.89	-2,123.20	-929.74	2,317.84	203.65	
6,950.00	20.83	198.72	6,518.78	-2,153.94	-941.09	2,350.55	203.60	
7,040.00	20.74	198.46	6,602.92	-2,184.21	-951.28	2,382.37	203.53	
7,130.00	20.26	198.11	6,687.22	-2,214.13	-961.17	2,413.76	203.47	
7,221.00	19.56	197.67	6,772.78	-2,243.62	-970.69	2,444.60	203.40	
7,311.00	20.17	198.20	6,857.43	-2,272.72	-980.11	2,475.05	203.33	
7,402.00	20.65	196.70	6,942.71	-2,302.99	-989.62	2,506.61	203.25	
7,493.00	20.74	199.08	7,027.84	-2,333.59	-999.50	2,538.63	203.19	
7,583.00	20.17	199.16	7,112.17	-2,363.31	-1,009.80	2,570.00	203.14	
7,673.00	19.91	196.97	7,196.72	-2,392.62	-1,019.36	2,600.72	203.08	
7,764.00	19.60	198.90	7,282.37	-2,421.88	-1,028.83	2,631.35	203.02	
7,854.00	19.42	198.90	7,367.20	-2,450.32	-1,038.57	2,661.33	202.97	
7,945.00	17.80	198.55	7,453.44	-2,477.82	-1,047.89	2,690.29	202.92	
8,035.00	17.80	197.23	7,539.13	-2,504.00	-1,056.34	2,717.70	202.87	
8,126.00	16.04	197.58	7,626.19	-2,529.27	-1,064.26	2,744.06	202.82	
8,216.00	14.94	202.68	7,712.92	-2,551.83	-1,072.49	2,768.05	202.80	
8,307.00	13.97	205.58	7,801.04	-2,572.56	-1,081.76	2,790.75	202.81	
8,398.00	12.30	204.44	7,889.66	-2,591.30	-1,090.51	2,811.41	202.82	
8,488.00	10.90	204.96	7,977.82	-2,607.74	-1,098.07	2,829.50	202.83	
8,579.00	10.41	202.15	8,067.25	-2,623.15	-1,104.80	2,846.32	202.84	
8,669.00	8.61	198.20	8,156.01	-2,637.09	-1,109.97	2,861.16	202.83	
8,760.00	7.12	196.09	8,246.15	-2,648.98	-1,113.66	2,873.55	202.80	
8,850.00	6.28	201.89	8,335.53	-2,658.90	-1,117.04	2,884.02	202.79	
8,941.00	5.19	206.02	8,426.08	-2,667.22	-1,120.70	2,893.10	202.79	
9,031.00	3.60	208.04	8,515.81	-2,673.37	-1,123.82	2,899.98	202.80	
9,122.00	2.37	219.03	8,606.69	-2,677.36	-1,126.34	2,904.63	202.82	
9,212.00	1.36	229.57	8,696.64	-2,679.50	-1,128.33	2,907.37	202.84	

<b>Company:</b>	Terra Energy Partners, LLP	<b>Local Co-ordinate Reference:</b>	Well WMC 512-20 - Slot WMC 512-20
<b>Project:</b>	Garfield County, CO (Nad 83)	<b>TVD Reference:</b>	KB=30' @ 8898.00usft
<b>Site:</b>	WMC 24-17 Pad	<b>MD Reference:</b>	KB=30' @ 8898.00usft
<b>Well:</b>	WMC 512-20	<b>North Reference:</b>	True
<b>Wellbore:</b>	OH	<b>Survey Calculation Method:</b>	Minimum Curvature
<b>Design:</b>	OH	<b>Database:</b>	EDM 5000.1 Single User Db

Survey								
MD (usft)	Inc (°)	Azi (azimuth) (°)	TVD (usft)	N/S (usft)	E/W (usft)	Closure Distance (usft)	Closure Azimuth (°)	
9,302.00	1.14	244.08	8,786.62	-2,680.58	-1,129.95	2,909.00	202.86	
9,393.00	0.79	265.43	8,877.60	-2,681.02	-1,131.39	2,909.97	202.88	
9,483.00	0.40	269.39	8,967.60	-2,681.08	-1,132.32	2,910.38	202.90	
9,574.00	0.61	347.00	9,058.60	-2,680.61	-1,132.75	2,910.12	202.91	
9,664.00	1.01	337.59	9,148.59	-2,679.41	-1,133.16	2,909.17	202.92	
9,755.00	1.14	4.22	9,239.57	-2,677.76	-1,133.39	2,907.75	202.94	
9,845.00	1.49	16.44	9,329.55	-2,675.75	-1,133.00	2,905.74	202.95	
9,936.00	1.80	26.72	9,420.51	-2,673.34	-1,132.02	2,903.14	202.95	
10,026.00	2.68	25.75	9,510.44	-2,670.18	-1,130.47	2,899.63	202.95	
10,117.00	2.68	34.37	9,601.34	-2,666.51	-1,128.35	2,895.42	202.94	
10,207.00	1.45	31.38	9,691.28	-2,663.80	-1,126.56	2,892.23	202.92	
10,298.00	1.32	52.03	9,782.25	-2,662.17	-1,125.14	2,890.17	202.91	
10,389.00	1.85	45.88	9,873.22	-2,660.50	-1,123.26	2,887.90	202.89	
10,479.00	1.80	51.77	9,963.17	-2,658.62	-1,121.10	2,885.33	202.86	
10,570.00	1.63	43.68	10,054.13	-2,656.80	-1,119.09	2,882.87	202.84	
10,660.00	2.07	19.78	10,144.09	-2,654.34	-1,117.65	2,880.05	202.83	
10,751.00	2.20	7.91	10,235.02	-2,651.07	-1,116.86	2,876.72	202.85	
10,841.00	1.63	349.46	10,324.98	-2,648.10	-1,116.85	2,873.98	202.87	
10,932.00	1.97	282.83	10,415.94	-2,646.48	-1,118.62	2,873.18	202.91	
11,022.00	2.55	262.80	10,505.87	-2,646.38	-1,122.11	2,874.45	202.98	
11,113.00	3.96	253.22	10,596.72	-2,647.54	-1,127.13	2,877.48	203.06	
11,203.00	4.53	254.97	10,686.47	-2,649.36	-1,133.54	2,881.67	203.16	
11,294.00	4.70	261.04	10,777.18	-2,650.88	-1,140.69	2,885.88	203.28	
11,344.00	4.61	260.25	10,827.01	-2,651.54	-1,144.69	2,888.07	203.35	
11,410.00	4.61	260.25	10,892.80	-2,652.43	-1,149.92	2,890.97	203.44	
TD @ 11410.00' MD / 10892.80' TVD								

Design Annotations				
Measured Depth (usft)	Vertical Depth (usft)	Local Coordinates		Comment
		+N/-S (usft)	+E/-W (usft)	
295.00	294.38	-15.13	-6.60	First MWD Survey @ 295.00'MD / 294.38' TVD
11,410.00	10,892.80	-2,652.43	-1,149.92	TD @ 11410.00' MD / 10892.80' TVD

Checked By: \_\_\_\_\_ Approved By: \_\_\_\_\_ Date: \_\_\_\_\_